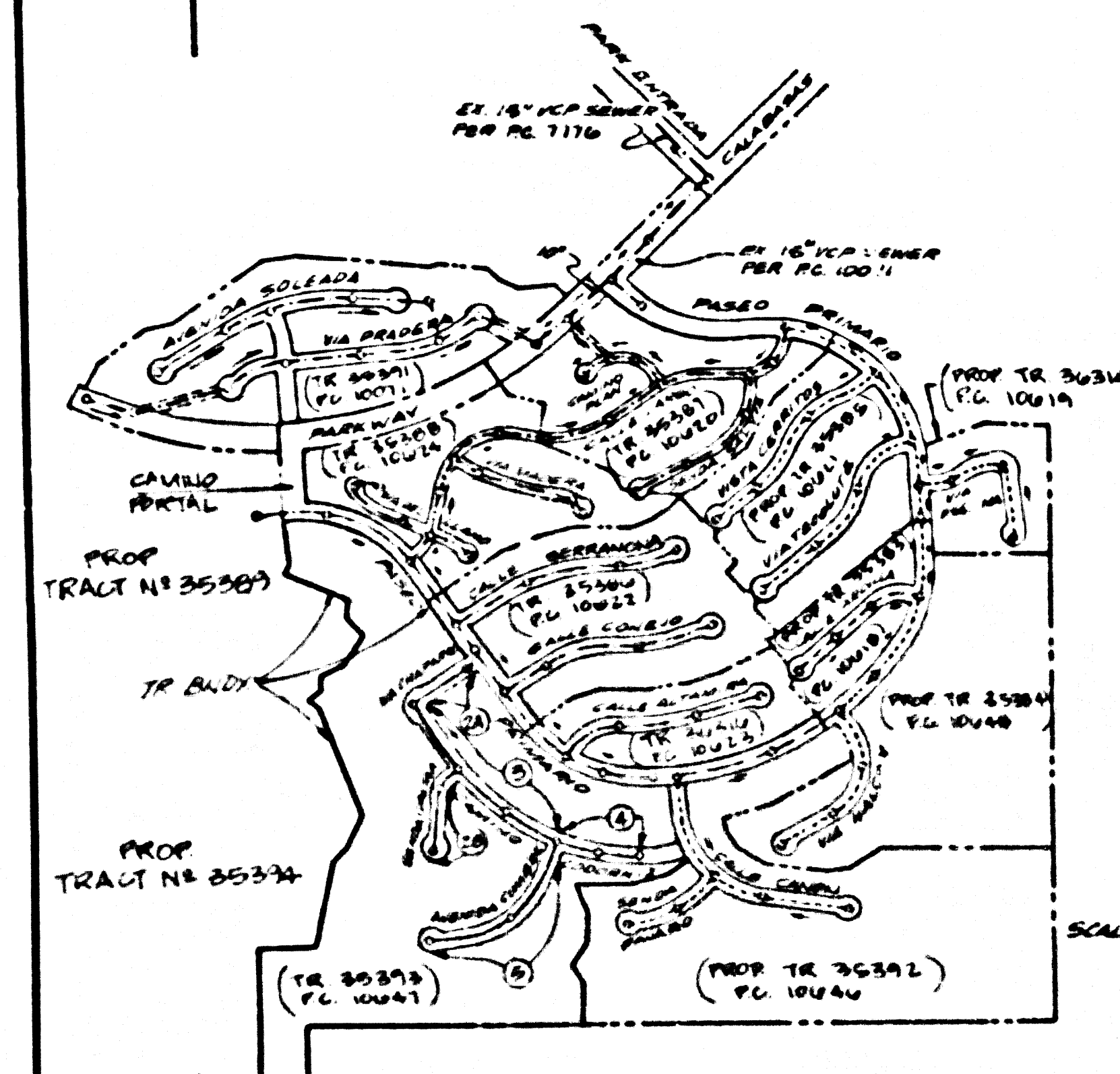


B.M. C.Y. 8040 ELEV. 1005.931
 N.D.B.N. TAB 18 ON 3" S. BOR
 55' S. & 64' E. C/L 181
 CALAPAS RD. & TRACT CALAMANS
 MALIBU QUAD. 19 80



NOTE: NUMBERS IN CIRCLES INDICATE PAGE NUMBER.
 LOT 6, 7, 8, 9, 10 TO BE SERVED BY LOCAL SEWER TO NO. 10024. LOTS 1 TO 5 INCLUSIVE ARE SERVED BY PC 10623. LOTS 10 TO 13 INCLUSIVE ARE SERVED BY PC 10622.

PRIVATE ENGINEER'S NOTICE TO CONTRACTORS
 The existence and location of any underground utility pipes or structures shown on these plans are obtained by a search of the available records. To the best of our knowledge there are no existing utilities except as shown on these plans. The contractor is required to take any precautionary measures to protect the utility lines shown and any other lines not of record or not shown on these plans. The contractor shall be responsible for notifying "UNDERGROUND SERVICE ALERT" at 1-800-422-4133 two working days prior to any excavation or construction.

Robert Kalleberg 12-16-86
 Registered Engineer (R.C.E. No. 4700)

CONSTRUCTION NOTES CONT'D.

- FULL COMPLIANCE WITH PART IV OF THE SPECIAL PROVISIONS IS REQUIRED FOR THE INSTALLATION OF A-B-S COMPOSITE PIPE.
- MANHOLE WATER STOP GASKETS AND SLAMPS ARE REQUIRED FOR THE CONNECTION OF A-B-S COMPOSITE PIPE TO MANHOLE STRUCTURES.
- A-B-S SOLID WALL PIPE MUST BE USED FOR VUE AND HOUSE LATERAL CONNECTIONS TO A-B-S COMPOSITE MAINLINE SEWER PIPE.
- A-B-S COMPOSITE PIPE SHALL BE BENDED IN CONFORMANCE WITH THE TABLE IN SECTION D-3.1. OF PART IV OF THE SPECIAL PROVISIONS.
- THE SERVICE CONNECTION COUPLERS ARE REQUIRED FOR RADIUS OF CURVATURE LESS THAN 300 FEET WHEN USING "A" A-B-S COMPOSITE PIPE.
- NO CONNECTION FOR DISPOSAL OF INDUSTRIAL WASTE IS ALLOWED IF A-B-S COMPOSITE PIPE IS USED.
- SEWER LINE CURVATURE SHALL NOT BE ACHIEVED BY PULLING OF JOINTS OR BELLING PIPE ENDS WHEN USING PLASTIC PIPE INCLUDING A-B-S COMPOSITE PIPE.
- ALL VUE AND HOUSE LATERALS ARE TO BE LOCATED AT LEAST FIVE FEET APART & WHEN POSSIBLE NOT CLOSER THAN FIVE FEET TO ANY MANHOLE.
- A-B-S SOLID WALL PIPE IS NOT ACCEPTABLE FOR USE AS MAINLINE SEWER.
- ONLY VUE BRANCHES ARE TO BE USED FOR CONNECTION TO A-B-S COMPOSITE MAINLINE SEWER PIPE.
- TESTING PER L.A.S. VERTICAL WATER DISTRICT
 - IMPERMEABLE LEAKAGE TESTS: METHOD USED FOR TESTING WILL BE THE SAME AS L.A. COUNTY EXCEPT THE P.W. TO BE USED IS AS FOLLOWS:

PIPE DIAMETER	MINIMUM TIME LOAD
12" - 14"	1 HOUR
16" - 20"	2 HOURS
24" - 30"	3 HOURS
36" - 48"	4 HOURS
 - MANHOLE LEAKAGE TESTS: AT THE DISCRETION OF THE DISTRICT'S REPRESENTATIVE, ONE MANHOLE OUT OF EVERY TEN MANHOLES AND A MINIMUM OF TWO WILL BE FILLED WITH WATER & AFTER THREE HOURS WILL BE CHECKED FOR LEAKAGE WITH NO DRAINAGE. EVERY OTHER ONE MANHOLE NOT FILLING TESTS. FIVE MORE WILL BE TESTED AT THE DISCRETION OF THE DISTRICT'S REPRESENTATIVE.
 - AIR TESTING: WHERE THE DIFFERENCE IN ELEVATION BETWEEN THE TOP OF THE UPPER STRUCTURE & THE TOP OF THE LOWER STRUCTURE IS MORE THAN 10 FEET, AIR TEST WILL BE MADE. THE TIME TAKEN TO LOSE ONE (1) POUND PER SQUARE INCH SAUCE PRESSURE FROM THREE (3) POUNDS PER SQUARE INCH SAUCE PRESSURE TO TWO (2) POUNDS PER SQUARE INCH SAUCE PRESSURE SHALL NOT BE LESS THAN THREE (3) HOURS ON THE FOLLOWING TABLE:

PIPE DIAMETER	MINIMUM TIME LOAD
12" - 14"	1 HOUR
16" - 20"	2 HOURS
24" - 30"	3 HOURS
36" - 48"	4 HOURS

IF THE TIME TO LOSE TIME LISTED IN THE TABLE ABOVE, THE CONTRACTOR SHALL MAKE SUCH REPAIRS AS ARE NECESSARY TO ELIMINATE THE EXCESSIVE LEAKAGE.

ISSUE NO HOUSE LATERAL PERMITS UNTIL OUTLET SEWER PER P.C.'S 10071, 10070, 10022, 10023, & 10024 ARE ACCEPTED BY L.A. COUNTY FOR PUBLIC USE.

GENERAL NOTES:

- ELEVATIONS ARE IN FEET ABOVE U.S.C. & G.S. SEA LEVEL. DATUM OF THE EXISTENCE OF PUBLIC UTILITIES.
- NO REVISIONS SHALL BE MADE TO THESE PLANS WITHOUT THE APPROVAL OF THE ENGINEER OF PUBLIC UTILITIES.
- NO REPRESENTATIVE OF THE EMPLOYER SHALL BE PRESENT AT ANY PORTION OF THE WORK.
- GRANDES TO WHICH THIS IMPROVEMENT IS TO BE CONSTRUCTED ARE SHOWN ON PLANS AND PROFILES. GRADE POINTS FOR EXISTING CURBS, CENTER LINE OF STREETS, OR CENTER LINE OF ALLEYS AND UNIONS BY CURBS OR PROFILES AT ALL POINTS BEING DESIGNATED POINTS THE GRADE SHALL BE ESTABLISHED SO AS TO CONFORM TO A STRAIGHT LINE BETWEEN THESE DESIGNATED POINTS.
- THE PRIVATE ENGINEER SHALL FURNISH THE HOUSE LATERAL DEPTH AT THE PROPERTY LINE BELOW THE 1/4" OF CURB ELEVATION FOR EACH HOUSE LATERAL ON THE GRADE SHEET.
- BEFORE WORK CAN BE STARTED, THE CONTRACTOR MUST OBTAIN A PERMIT TO EXCAVATE IN COUNTY STREETS FROM THE COUNTY ENGINEER OF PUBLIC UTILITIES. THE PERMIT FEE IS \$100.00 AND A FEE TO THE PUBLIC WORKS DEPT. \$500.00. THE CONTRACTOR SHALL COVER THE COST OF CONSTRUCTION, INSPECTION AND RECORD PLANS.
- IF WORK IS TO BE DONE IN A STATE HIGHWAY A PERMIT MUST BE OBTAINED FROM THE STATE OF CALIFORNIA DIVISION OF HIGHWAYS, 120 SOUTH SPRING STREET, LOS ANGELES, CALIFORNIA.
- APPROVAL OF THIS PLAN BY THE COUNTY OF L.A. DOES NOT CONSTITUTE A REPRESENTATION AS TO THE ACCURACY OF THE LOCATION OR THE EXISTENCE OR NON EXISTENCE OF ANY UNDERGROUND UTILITY PIPE OR STRUCTURE WITHIN THE LIMITS OF THIS PROJECT. THIS NOTE APPLIES TO ALL PAGES.
- REFER TO SECTION 7.0.1 OF THE STANDARD SPECIFICATIONS REGARDING SAFETY ORDERS.
- IN ORDER TO THE ISSUANCE OF THE REQUIRED SEWER CONSTRUCTION PERMIT THE CONTRACTOR SHALL OBTAIN AND FILE WITH THE COUNTY ENGINEER OF PUBLIC UTILITIES A PERMIT TO EXCAVATE IN COUNTY STREETS FROM THE COUNTY OF L.A. THE PERMIT FEE IS \$100.00. THE CONTRACTOR SHALL OBTAIN AND FILE WITH THE COUNTY ENGINEER OF PUBLIC UTILITIES A PERMIT TO EXCAVATE IN COUNTY STREETS FROM THE COUNTY OF L.A. THE PERMIT FEE IS \$100.00. THE CONTRACTOR SHALL OBTAIN AND FILE WITH THE COUNTY ENGINEER OF PUBLIC UTILITIES A PERMIT TO EXCAVATE IN COUNTY STREETS FROM THE COUNTY OF L.A. THE PERMIT FEE IS \$100.00.

CONSTRUCTION NOTES:

- WORK SHALL BE CONSTRUCTED ACCORDING TO THE STANDARD SPECIFICATIONS FOR PUBLIC WORKS CONSTRUCTION 1980 EDITION BY THE COUNTY ENGINEER AND THE STANDARD SPECIFICATIONS FOR THE CONSTRUCTION OF SANITARY SEWERS DATED 2/27, 1976.
- THE CONTRACTOR SHALL NOTIFY THE CONSTRUCTION DIV. PUBLIC WORKS DEPT. TEL (213) 221-8901 AT LEAST 24 HOURS BEFORE STARTING ANY WORK UNDER THIS CONTRACT.
- HOUSE LATERALS TO BE CONSTRUCTED AT PROPERTY LINE 8 FEET BELOW CURB GRADE EXCEPT AS NOTED.
- ALL JOINTS OF THESE CURB AND VUE SHALL BE MADE WITH A RUBBER SEAL JOINT TYPE "C" OR "D".
- ALL STRUCTURE SHALL BE BUILT WITH MANHOLES IN L.A. COUNTY STANDARD SPECIFICATIONS AND SECTION 11.0.1.1.
- PROVIDE STAIRS ON THE PROPERTY LINE OR PROPERTY LINE PRODUCE AT RIGHT ANGLES TO THE SEWER LINE AT THE CENTER LINE OF EACH MANHOLE.
- MANHOLE TOPS UNIMPROVED PORTS OF WAY TO BE 6 INCHES ABOVE FINISHED GRADE.
- WITHIN 6 FEET OF JOINTS SHALL BE TYPE "D" OR "B" PER STANDARD SPECIFICATIONS SECTION 200.2.
- IF A POWER POLE IS WITHIN THREE FEET OF THE SEWER THE SEWER SHALL BE ENCASED PER 23 CASE 4 TWO FEET ON EACH SIDE FROM THE POINT OF INTERFERENCE.
- IF DURING THE COURSE OF CONSTRUCTION IT IS DETERMINED THAT THERE IS LESS THAN FOUR FEET OF COVER FOR THE TOP OF A MAIN LINE OR HOUSE LATERAL SEWER MANHOLE, IT IS NOT INDICATED ON THE PLANS THE PIPE SHALL BE ENCASED PER 23 CASE 4 UNLESS OTHERWISE APPROVED BY THE DISTRICT'S REPRESENTATIVE.
- ALL JOINTS OF THESE CURB AND VUE SHALL BE MADE WITH A RUBBER SEAL JOINT TYPE "C" OR "D".
- ALL STRUCTURE SHALL BE BUILT WITH MANHOLES IN L.A. COUNTY STANDARD SPECIFICATIONS AND SECTION 11.0.1.1.
- RESURFACE ALL TRENCHES WITHIN PAVED AREAS TO MEET L.A. COUNTY PUBLIC WORKS OR CALIFORNIA STATE HIGHWAY REQUIREMENTS AS ACCORDING TO THE PERMITS.
- FULL COMPLIANCE WITH SECTION 200.2.3.6 OF THE STANDARD SPECIFICATIONS WILL BE REQUIRED FOR BACKFILL IN STREETS CERTIFICATION OF BACKFILL COMPACTED AND SAND EQUIVALENTS BY A QUALIFIED REGISTERED LABORATORY SHALL BE PROVIDED BY THE PERMITTEE PRIOR TO THE ISSUANCE OF A CERTIFICATE OF PARTIAL ACCEPTANCE.
- SPECIAL BACKFILL IN UNPAVED CONSTRUCTION (A) BACKFILL TRENCH AND REPAIR OTHER EARTH SO AS TO ACHIEVE THE NATURAL OR FINISHED GRADES AND SLOPES SHOWN ON THE GRADING PLAN APPROVED FOR THE DEVELOPMENT BY THE LAND DEVELOPER. SPECIAL BACKFILL AND EARTH REPAIRS SHALL BE CONSTRUCTED TO A MINIMUM OF 10% OF MAXIMUM DENSITY PER A.S.T.M. METHOD OF TEST 48547 AS ACCEPTED ACCEPTABLE CERTIFICATION OF SUCH COMPACTION SHALL BE SUBMITTED TO THE CONSTRUCTION DIV. - PUBLIC WORKS DEPT.

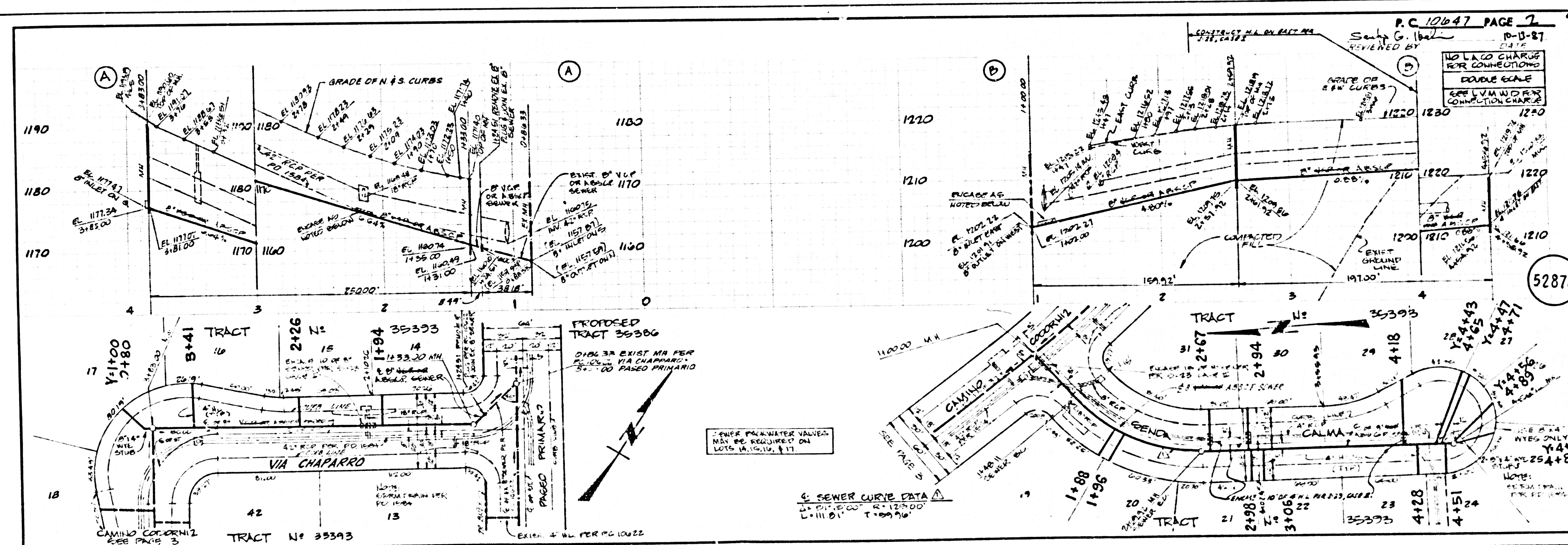
DOUBLE SCALE

PROFILE, ALIGNMENT AND GRADE OF
SANITARY SEWERS
 TO BE CONSTRUCTED IN
TRACT NO. 35393
PRIVATE CONTRACT NO. 10647
 C-232

3 SHEETS, 5 PAGES (52870)

SCALE: HORIZONTAL 1" = 40'
 VERTICAL 1" = 4'

OCTOBER, 1986
 PREPARED IN THE OFFICES OF
 Robert Ben William Frost & Associates
 12-16-86
 Robert Kalleberg (R.C.E. No. 4700)

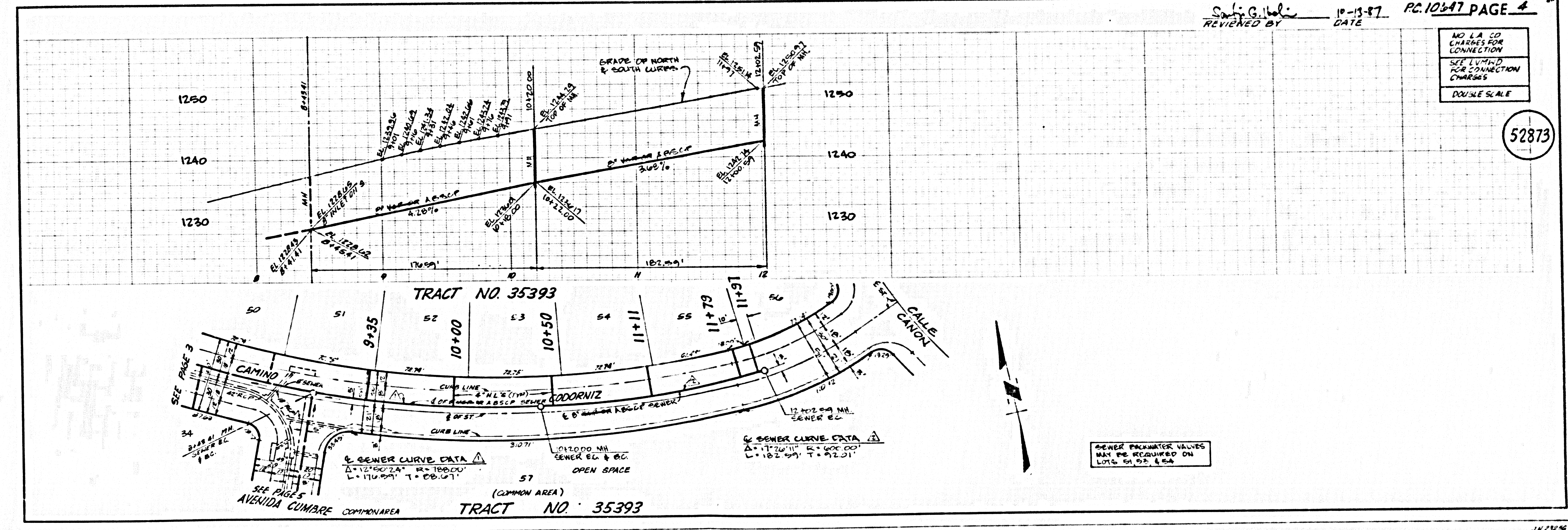
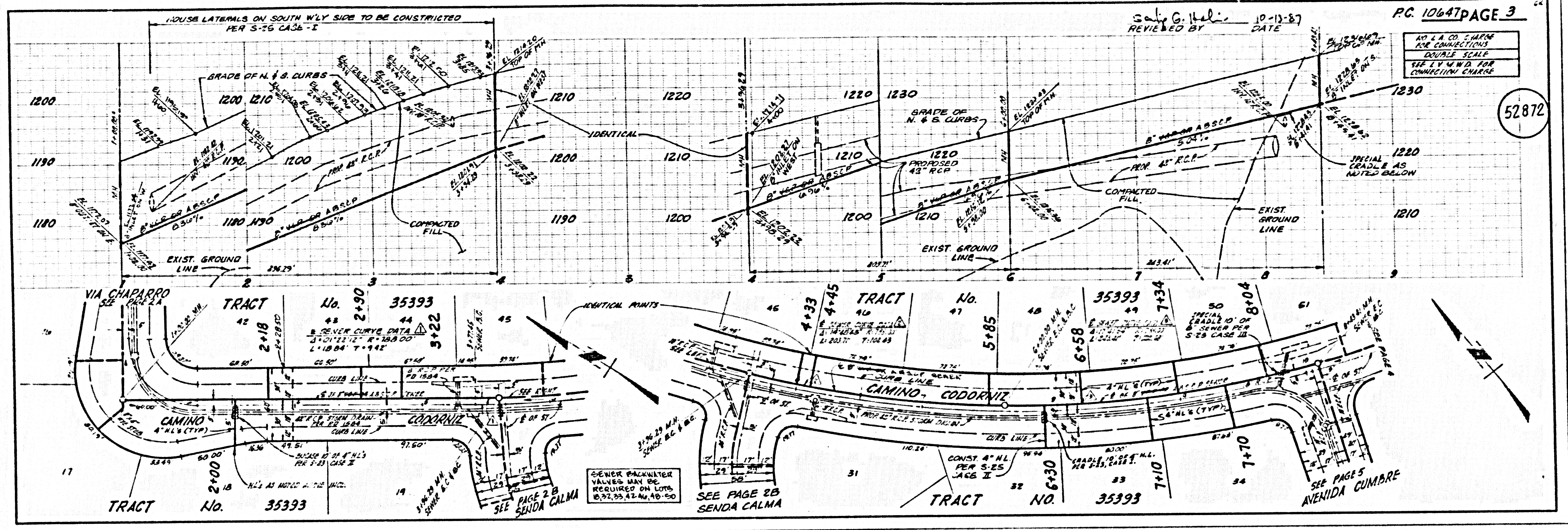


SEWER FROM WATER VALVES MUST BE REQUIRED ON LOTS 1A, 15A, & 17

SEWER CURVE DATA
 L.V. 1111 D.1 T. 109.90'

NO L.A. CO. CHARGE FOR CONNECTIONS
 DOUBLE SCALE
 SEE L.V. 1111 D.1 FOR CONNECTION CHARGE

52871



S 14901 29 E222 24 TRACT

