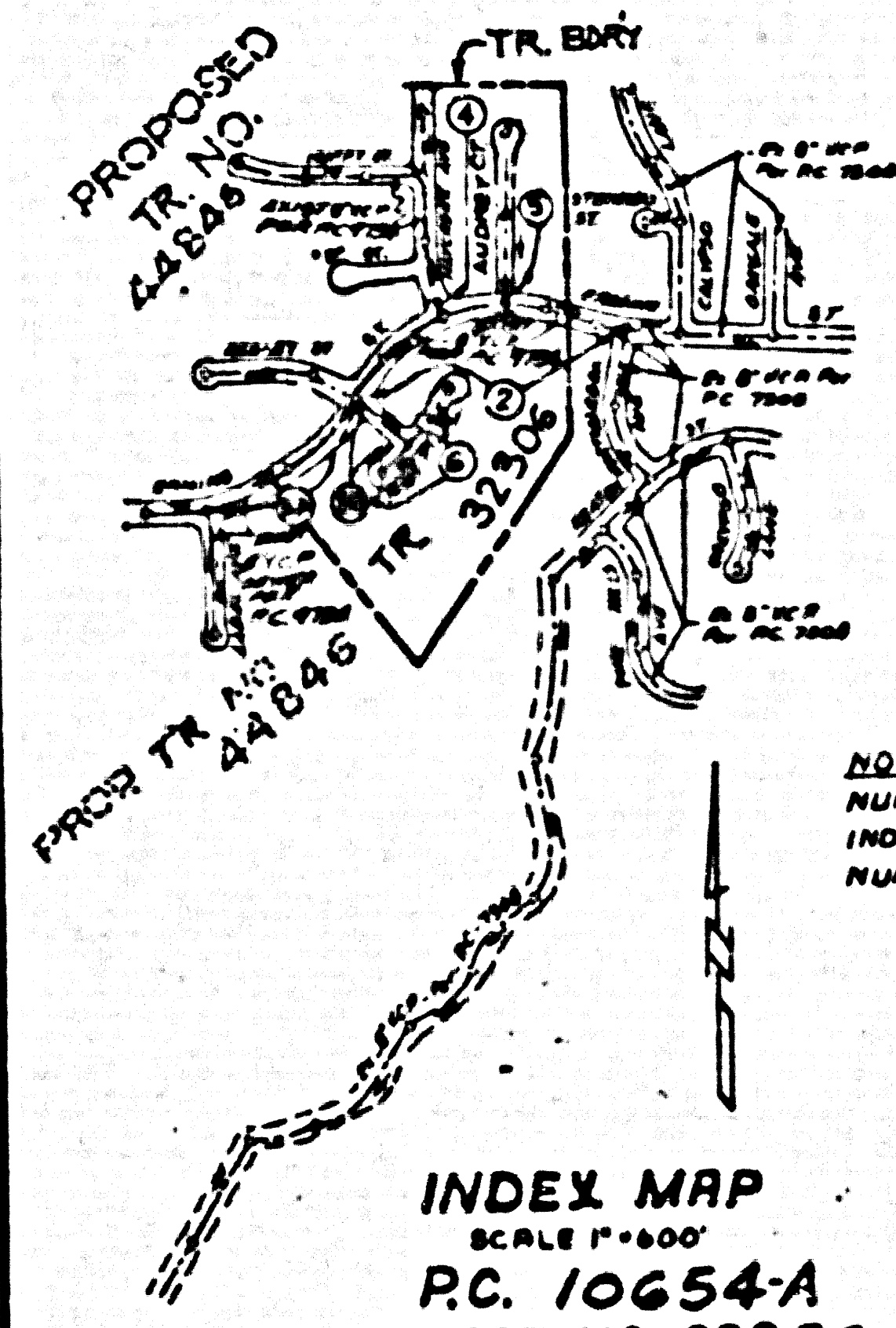


B.M. CL. 1059 ELEV. 1612.109  
LRDN N & CS ST. ED. BCR. A-2E  
COR. STEINWAY ST. A. LANGSIDE  
AVE. 15 FT. 3.50 FT. 8 CL. AT  
STMPD (BM)  
NEWHALL QUAD. 19.83



INDEX MAP  
SCALE 1"=100'  
P.C. 10654-A  
TRACT NO. 32306

### DOUBLE SCALE

STANDARD PLANS	
GADGETS FOR HOUSE LATERALS	S-25
SPECIAL HOUSE LATERALS	S-25
EROSION PROTECTION IN STEEP SLOPES	S-24
ANCHOR BLOCK	S-24
CHIMNEY PIPE AND BASE	S-27

### CONSTRUCTION NOTES CONT'D.

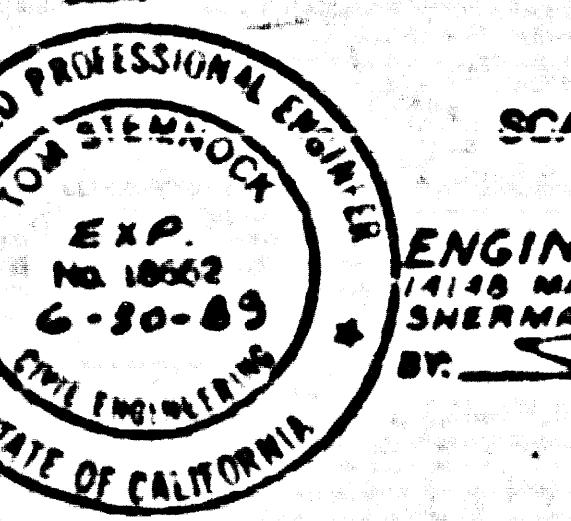
- 16. FULL COMPLIANCE WITH PART IV OF THE SPECIAL PROVISIONS IS REQUIRED FOR THE INSTALLATION OF A.B.S. COMPOSITE PIPE.
  - 17. HANDLED WATER STOP GASKETS AND CLAMPS ARE REQUIRED FOR THE PROTECTION OF A.B.S. COMPOSITE PIPE TO HANDLE STRUCTURES.
  - 18. A.B.S. SOLID WALL PIPE MUST BE USED FOR LATERALS AND HOUSE LATERALS CONNECTIONS TO A.B.S. APPROPRIATE HANGING SEWER PIPE.
  - 19. A.B.S. COMPOSITE PIPE SHALL BE SEWED IN CONFORMANCE WITH THE TABLE IN SECTION S-9.1.1 OF PART IV OF THE SPECIAL PROVISIONS.
  - 20. THREE GRADE REPLICATION GADGETS ARE REQUIRED FOR RADII OF CURVATURE LESS THAN 150 FEET WITH LINES 6" A.B.S. COMPOSITE PIPE.
  - 21. NO CONNECTIONS FOR DISPOSAL OF INDUSTRIAL WASTE IS ALLOWED IF A B.S. COMPOSITE PIPE IS USED.
  - 22. SEWER LINE CURVATURE SHALL NOT BE ACHIEVED BY PULLING OF JOINTS OR BEVELING PIPE ENDS UNDER PLASTIC PIPE INCLUDING A.B.S. COMPOSITE PIPE.
  - 23. ALL WYTH AND/OR BENCH LEVELS ARE TO BE PAINTED AT LEAST FIVE FEET APART AND WHEN POSSIBLE NOT CLOSER THAN FIVE FEET TO ANY FENCE.
  - 24. A.B.S. SOLID WALL PIPE IS NOT ACCEPTABLE FOR USE AS HANGING SEWER.
  - 25. ONLY TWO JOINTS ARE TO BE USED FOR CONNECTION TO A.B.S. COMPOSITE HANGING SEWER PIPE.
- NO CONNECTION FOR THE DISPOSAL OF INDUSTRIAL WASTE SHALL BE MADE TO SEWERS SHOWN ON THESE DRAWINGS UNTIL A PERMIT FOR INDUSTRIAL WASTEWATER DISCHARGE HAS BEEN ISSUED BY THE SANITATION DISTRICTS FOR SAID CONNECTION.
- BEFORE BREAKING INTO OR CONSTRUCTION ON A COUNTY SANITATION DISTRICT SEWER AND PRIOR TO FINAL ACCEPTANCE OF THE PROJECT, SANITATION DISTRICT INSPECTOR SHALL BE NOTIFIED BY PHONE (818) 962-8605 SO THAT REQUIRED INSPECTION CAN BE MADE.

### GENERAL NOTES:

- 1. ELEVATIONS ARE IN FEET ABOVE M.S.L. & U.S. SEA LEVEL DATUM OF 1929.
- 2. NO REVISIONS SHALL BE MADE IN THESE PLANS WITHOUT THE APPROVAL OF THE ENGINEER OF PUBLIC WORKS.
- 3. NO REPRESENTATIVE OF THE DEPARTMENT OF PUBLIC WORKS SHALL SURVEY OR LAY OUT ANY PORTION OF THE PROJECT.
- 4. STAKING THE WORK SHALL BE THE RESPONSIBILITY OF THE CONTRACTOR AND SHALL BE DONE UNDER THE SUPERVISION OF THE ENGINEER OF PUBLIC WORKS. THE CONTRACTOR SHALL BE RESPONSIBLE FOR THE LOCATION OF ALL POINTS TO BE SET BY THE CONTRACTOR. THE CONTRACTOR SHALL BE RESPONSIBLE FOR THE LOCATION OF ALL POINTS TO BE SET BY THE CONTRACTOR.
- 5. THE PRIVATE ENGINEER SHALL FURNISH THE DEPARTMENT OF PUBLIC WORKS WITH ALL NECESSARY DATA AND INFORMATION FOR ALL HOUSE LATERALS AND 12" OR 15" DIAMETER LATERALS AND SHALL FURNISH THE DEPARTMENT OF PUBLIC WORKS WITH THE NECESSARY PLANS TO SHOW ALL LATERALS AND HOUSE LATERALS AS CONTRACTED IN A STRIP PLAN ALONG WITH A RIGHT ANGLE TO THE CENTERLINE OF THE PLANS. ALL HOUSE LATERALS SHALL BE CONTRACTED TO BE 12" OR 15" DIAMETER AND SHALL BE SET AT AN ANGLE OF 45 DEGREES WITH THE CENTERLINE OF THE PLANS. ALL HOUSE LATERALS SHALL BE SET AT AN ANGLE OF 45 DEGREES WITH THE CENTERLINE OF THE PLANS.
- 6. THE PRIVATE ENGINEER SHALL FURNISH THE DEPARTMENT OF PUBLIC WORKS WITH ALL NECESSARY DATA AND INFORMATION FOR ALL HOUSE LATERALS AND 12" OR 15" DIAMETER LATERALS AND SHALL FURNISH THE DEPARTMENT OF PUBLIC WORKS WITH THE NECESSARY PLANS TO SHOW ALL LATERALS AND HOUSE LATERALS AS CONTRACTED IN A STRIP PLAN ALONG WITH A RIGHT ANGLE TO THE CENTERLINE OF THE PLANS. ALL HOUSE LATERALS SHALL BE CONTRACTED TO BE 12" OR 15" DIAMETER AND SHALL BE SET AT AN ANGLE OF 45 DEGREES WITH THE CENTERLINE OF THE PLANS.
- 7. THE CONTRACTOR SHALL BE RESPONSIBLE FOR THE LOCATION OF ALL POINTS TO BE SET BY THE CONTRACTOR. THE CONTRACTOR SHALL BE RESPONSIBLE FOR THE LOCATION OF ALL POINTS TO BE SET BY THE CONTRACTOR.
- 8. THE CONTRACTOR SHALL BE RESPONSIBLE FOR THE LOCATION OF ALL POINTS TO BE SET BY THE CONTRACTOR. THE CONTRACTOR SHALL BE RESPONSIBLE FOR THE LOCATION OF ALL POINTS TO BE SET BY THE CONTRACTOR.
- 9. THE CONTRACTOR SHALL BE RESPONSIBLE FOR THE LOCATION OF ALL POINTS TO BE SET BY THE CONTRACTOR. THE CONTRACTOR SHALL BE RESPONSIBLE FOR THE LOCATION OF ALL POINTS TO BE SET BY THE CONTRACTOR.
- 10. THE CONTRACTOR SHALL BE RESPONSIBLE FOR THE LOCATION OF ALL POINTS TO BE SET BY THE CONTRACTOR. THE CONTRACTOR SHALL BE RESPONSIBLE FOR THE LOCATION OF ALL POINTS TO BE SET BY THE CONTRACTOR.
- 11. THE CONTRACTOR SHALL BE RESPONSIBLE FOR THE LOCATION OF ALL POINTS TO BE SET BY THE CONTRACTOR. THE CONTRACTOR SHALL BE RESPONSIBLE FOR THE LOCATION OF ALL POINTS TO BE SET BY THE CONTRACTOR.
- 12. THE CONTRACTOR SHALL BE RESPONSIBLE FOR THE LOCATION OF ALL POINTS TO BE SET BY THE CONTRACTOR. THE CONTRACTOR SHALL BE RESPONSIBLE FOR THE LOCATION OF ALL POINTS TO BE SET BY THE CONTRACTOR.
- 13. THE CONTRACTOR SHALL BE RESPONSIBLE FOR THE LOCATION OF ALL POINTS TO BE SET BY THE CONTRACTOR. THE CONTRACTOR SHALL BE RESPONSIBLE FOR THE LOCATION OF ALL POINTS TO BE SET BY THE CONTRACTOR.
- 14. THE CONTRACTOR SHALL BE RESPONSIBLE FOR THE LOCATION OF ALL POINTS TO BE SET BY THE CONTRACTOR. THE CONTRACTOR SHALL BE RESPONSIBLE FOR THE LOCATION OF ALL POINTS TO BE SET BY THE CONTRACTOR.
- 15. THE CONTRACTOR SHALL BE RESPONSIBLE FOR THE LOCATION OF ALL POINTS TO BE SET BY THE CONTRACTOR. THE CONTRACTOR SHALL BE RESPONSIBLE FOR THE LOCATION OF ALL POINTS TO BE SET BY THE CONTRACTOR.

### SANITARY SEWERS

TRACT NO. 32306  
PRIVATE CONTRACT NO. 10654-A  
A-72-C.D.1,2  
3 SHEETS, 6 PAGES



SCALE: HORIZONTAL 1"=40' VERTICAL 1"=4'

DECEMBER 1988

PREPARED IN THE OFFICES OF  
**ENGINEERING TECHNOLOGY INC.**  
1715 MANHATTAN BOULEVARD  
SHERMAN OAKS, CALIF. 91309  
BY: *[Signature]*  
REG. C.E. NO. 1552

### CONSTRUCTION NOTES:

- 1. WORK SHALL BE CONSTRUCTED ACCORDING TO THE STANDARD SPECIFICATIONS FOR PUBLIC WORKS CONSTRUCTION THIS SECTION WITH THE EXCEPTIONS SHOWN ON THESE DRAWINGS.
- 2. THE CONTRACTOR SHALL BE RESPONSIBLE FOR THE LOCATION OF ALL POINTS TO BE SET BY THE CONTRACTOR. THE CONTRACTOR SHALL BE RESPONSIBLE FOR THE LOCATION OF ALL POINTS TO BE SET BY THE CONTRACTOR.
- 3. THE CONTRACTOR SHALL BE RESPONSIBLE FOR THE LOCATION OF ALL POINTS TO BE SET BY THE CONTRACTOR. THE CONTRACTOR SHALL BE RESPONSIBLE FOR THE LOCATION OF ALL POINTS TO BE SET BY THE CONTRACTOR.
- 4. THE CONTRACTOR SHALL BE RESPONSIBLE FOR THE LOCATION OF ALL POINTS TO BE SET BY THE CONTRACTOR. THE CONTRACTOR SHALL BE RESPONSIBLE FOR THE LOCATION OF ALL POINTS TO BE SET BY THE CONTRACTOR.
- 5. THE CONTRACTOR SHALL BE RESPONSIBLE FOR THE LOCATION OF ALL POINTS TO BE SET BY THE CONTRACTOR. THE CONTRACTOR SHALL BE RESPONSIBLE FOR THE LOCATION OF ALL POINTS TO BE SET BY THE CONTRACTOR.
- 6. THE CONTRACTOR SHALL BE RESPONSIBLE FOR THE LOCATION OF ALL POINTS TO BE SET BY THE CONTRACTOR. THE CONTRACTOR SHALL BE RESPONSIBLE FOR THE LOCATION OF ALL POINTS TO BE SET BY THE CONTRACTOR.
- 7. THE CONTRACTOR SHALL BE RESPONSIBLE FOR THE LOCATION OF ALL POINTS TO BE SET BY THE CONTRACTOR. THE CONTRACTOR SHALL BE RESPONSIBLE FOR THE LOCATION OF ALL POINTS TO BE SET BY THE CONTRACTOR.
- 8. THE CONTRACTOR SHALL BE RESPONSIBLE FOR THE LOCATION OF ALL POINTS TO BE SET BY THE CONTRACTOR. THE CONTRACTOR SHALL BE RESPONSIBLE FOR THE LOCATION OF ALL POINTS TO BE SET BY THE CONTRACTOR.
- 9. THE CONTRACTOR SHALL BE RESPONSIBLE FOR THE LOCATION OF ALL POINTS TO BE SET BY THE CONTRACTOR. THE CONTRACTOR SHALL BE RESPONSIBLE FOR THE LOCATION OF ALL POINTS TO BE SET BY THE CONTRACTOR.
- 10. THE CONTRACTOR SHALL BE RESPONSIBLE FOR THE LOCATION OF ALL POINTS TO BE SET BY THE CONTRACTOR. THE CONTRACTOR SHALL BE RESPONSIBLE FOR THE LOCATION OF ALL POINTS TO BE SET BY THE CONTRACTOR.
- 11. THE CONTRACTOR SHALL BE RESPONSIBLE FOR THE LOCATION OF ALL POINTS TO BE SET BY THE CONTRACTOR. THE CONTRACTOR SHALL BE RESPONSIBLE FOR THE LOCATION OF ALL POINTS TO BE SET BY THE CONTRACTOR.
- 12. THE CONTRACTOR SHALL BE RESPONSIBLE FOR THE LOCATION OF ALL POINTS TO BE SET BY THE CONTRACTOR. THE CONTRACTOR SHALL BE RESPONSIBLE FOR THE LOCATION OF ALL POINTS TO BE SET BY THE CONTRACTOR.
- 13. THE CONTRACTOR SHALL BE RESPONSIBLE FOR THE LOCATION OF ALL POINTS TO BE SET BY THE CONTRACTOR. THE CONTRACTOR SHALL BE RESPONSIBLE FOR THE LOCATION OF ALL POINTS TO BE SET BY THE CONTRACTOR.
- 14. THE CONTRACTOR SHALL BE RESPONSIBLE FOR THE LOCATION OF ALL POINTS TO BE SET BY THE CONTRACTOR. THE CONTRACTOR SHALL BE RESPONSIBLE FOR THE LOCATION OF ALL POINTS TO BE SET BY THE CONTRACTOR.
- 15. THE CONTRACTOR SHALL BE RESPONSIBLE FOR THE LOCATION OF ALL POINTS TO BE SET BY THE CONTRACTOR. THE CONTRACTOR SHALL BE RESPONSIBLE FOR THE LOCATION OF ALL POINTS TO BE SET BY THE CONTRACTOR.

THE FOLLOWING LIST REVERSED STANDARD PLANS OR P.L.S. IN THE OFFICE OF THE DEPARTMENT OF PUBLIC WORKS SHALL APPLY TO THE CONSTRUCTION OF THIS PROJECT:

LANDING	0-1
MINIMUM PUBLIC SAFETY REQUIREMENTS	0-1
BRICK MANHOLE	0-2
STANDARD MANHOLE STOP	0-17
SEWER FOR SEWER MAN	0-49
CHIMNEY AND BRICKWORK	0-50
PIPE ON THE SURFACE	0-60
ALLOWABLE TRENCH WIDTHS	0-60
LOOKING MANHOLE FRAMES AND COVER	0-60
NON-SUPPORTING PRECAST CONCRETE MANHOLES	0-60
ADDITIONAL STANDARD PLANS - 3 SHOWN AT LEFT	

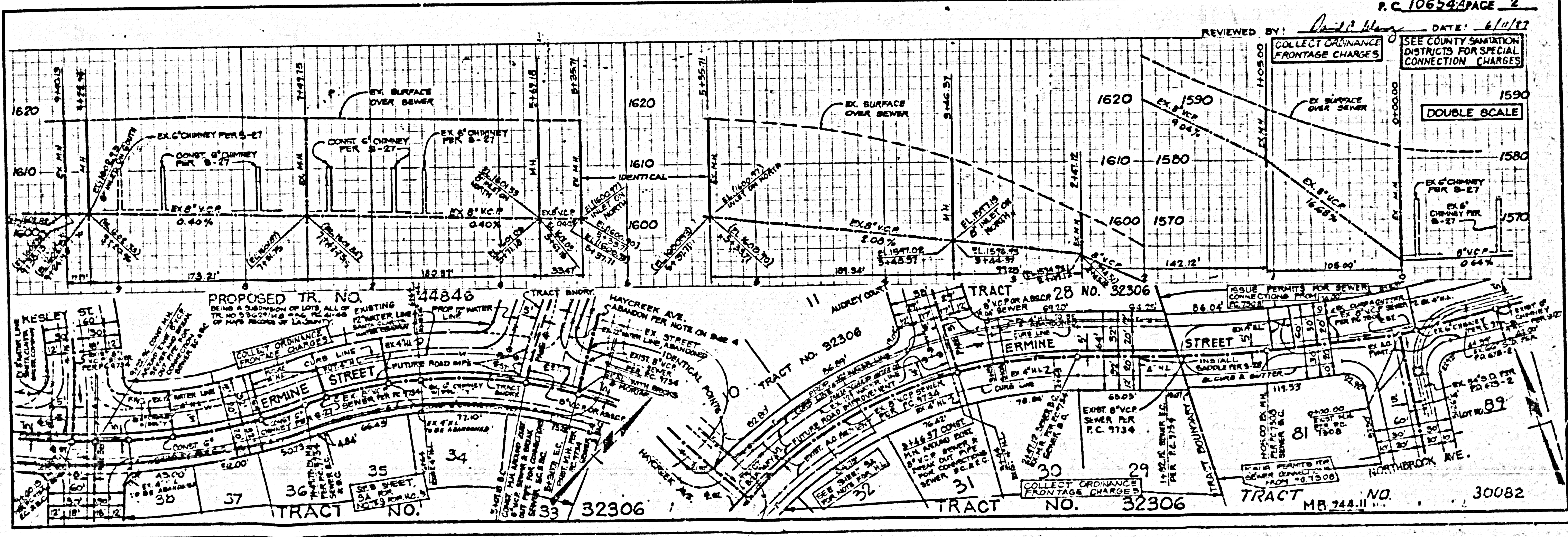
COUNTY OF LOS ANGELES, CALIFORNIA  
THOMAS A. TIDEMANSON  
DIRECTOR OF PUBLIC WORKS

APPROVED: *[Signature]* 4/16/87  
CHECKED: *[Signature]* 4/16/87

APPROVED: *[Signature]*  
CHARLES W. CARRY  
CHIEF ENGINEER  
CO. SAN. DIST. NO. 22

RECEIVED

SANTA CLARITA VALLEY BLDG. DIST. - B.2



COLLECT ORDINANCE FRONTAGE CHARGES  
SEE COUNTY SANITATION DISTRICTS FOR SPECIAL CONNECTION CHARGES

EX. SURFACE OVER SEWER  
EX. SURFACE OVER SEWER  
EX. SURFACE OVER SEWER

EX. CHIMNEY PER S-27  
EX. CHIMNEY PER S-27

EX. V.C.P. 0.40%  
EX. V.C.P. 0.40%  
EX. V.C.P. 0.40%

EX. V.C.P. 2.00%  
EX. V.C.P. 2.00%  
EX. V.C.P. 2.00%

EX. V.C.P. 0.64%  
EX. V.C.P. 0.64%  
EX. V.C.P. 0.64%

EX. V.C.P. 0.64%  
EX. V.C.P. 0.64%  
EX. V.C.P. 0.64%

EX. V.C.P. 0.64%  
EX. V.C.P. 0.64%  
EX. V.C.P. 0.64%

EX. V.C.P. 0.64%  
EX. V.C.P. 0.64%  
EX. V.C.P. 0.64%

EX. V.C.P. 0.64%  
EX. V.C.P. 0.64%  
EX. V.C.P. 0.64%

EX. V.C.P. 0.64%  
EX. V.C.P. 0.64%  
EX. V.C.P. 0.64%

EX. V.C.P. 0.64%  
EX. V.C.P. 0.64%  
EX. V.C.P. 0.64%

EX. V.C.P. 0.64%  
EX. V.C.P. 0.64%  
EX. V.C.P. 0.64%

EX. V.C.P. 0.64%  
EX. V.C.P. 0.64%  
EX. V.C.P. 0.64%

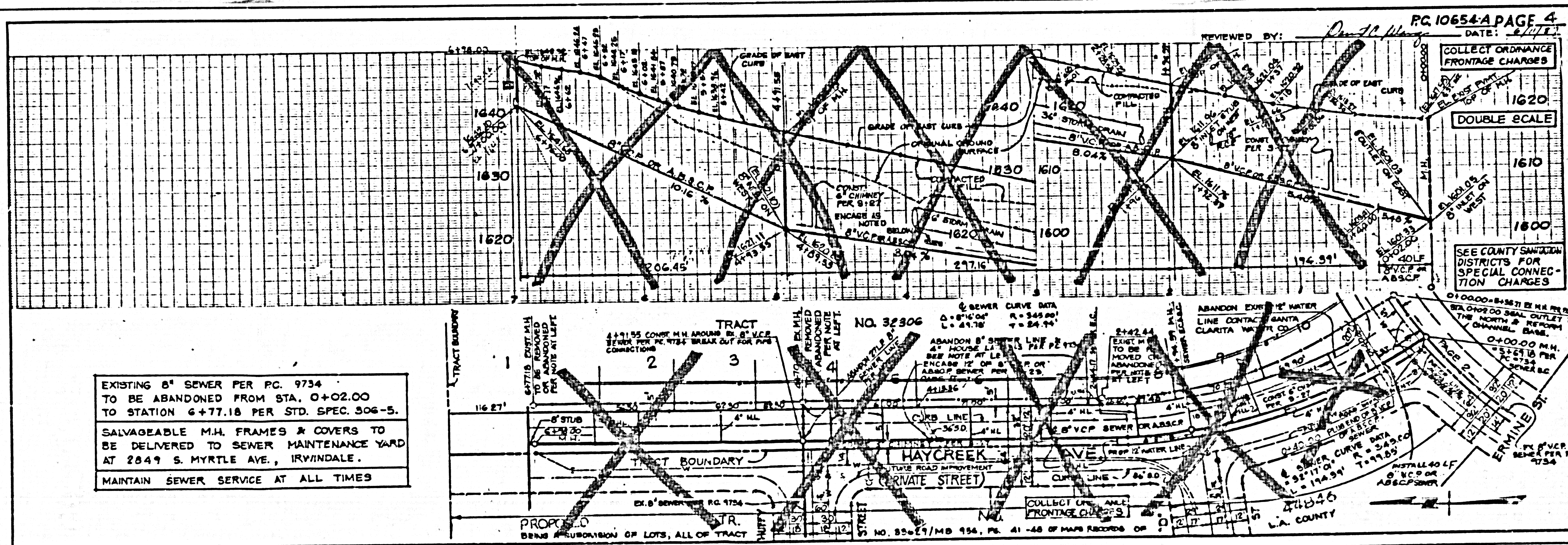
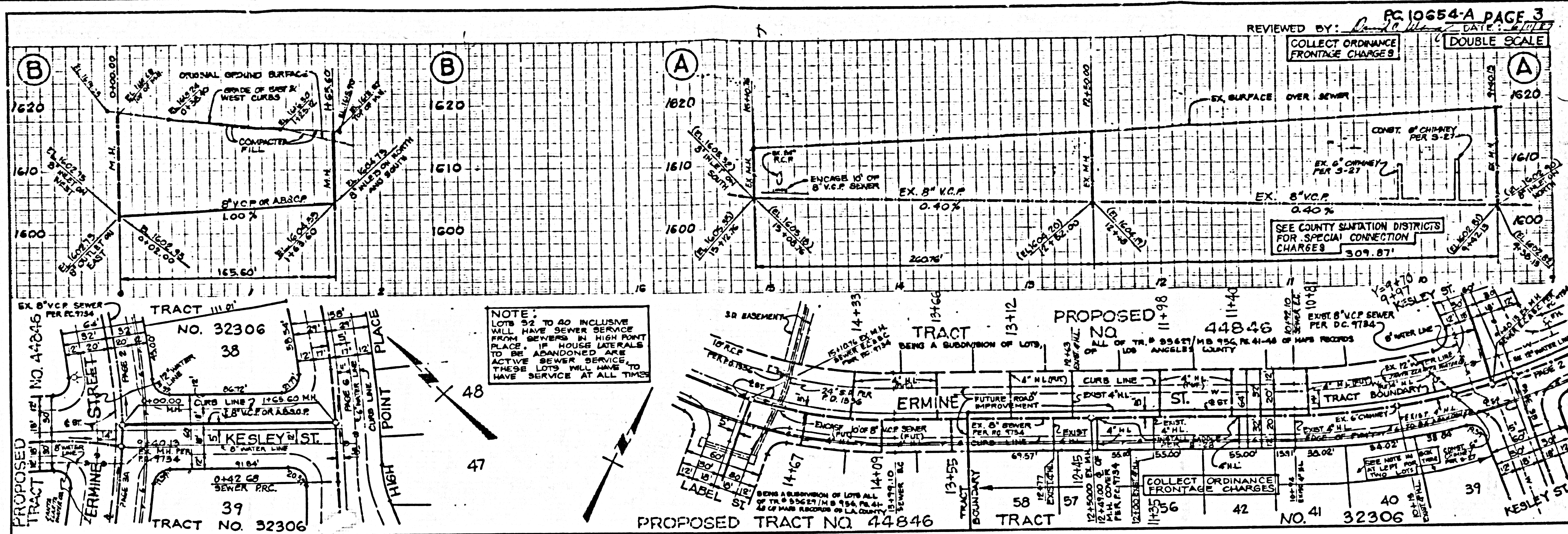
EX. V.C.P. 0.64%  
EX. V.C.P. 0.64%  
EX. V.C.P. 0.64%

EX. V.C.P. 0.64%  
EX. V.C.P. 0.64%  
EX. V.C.P. 0.64%

EX. V.C.P. 0.64%  
EX. V.C.P. 0.64%  
EX. V.C.P. 0.64%

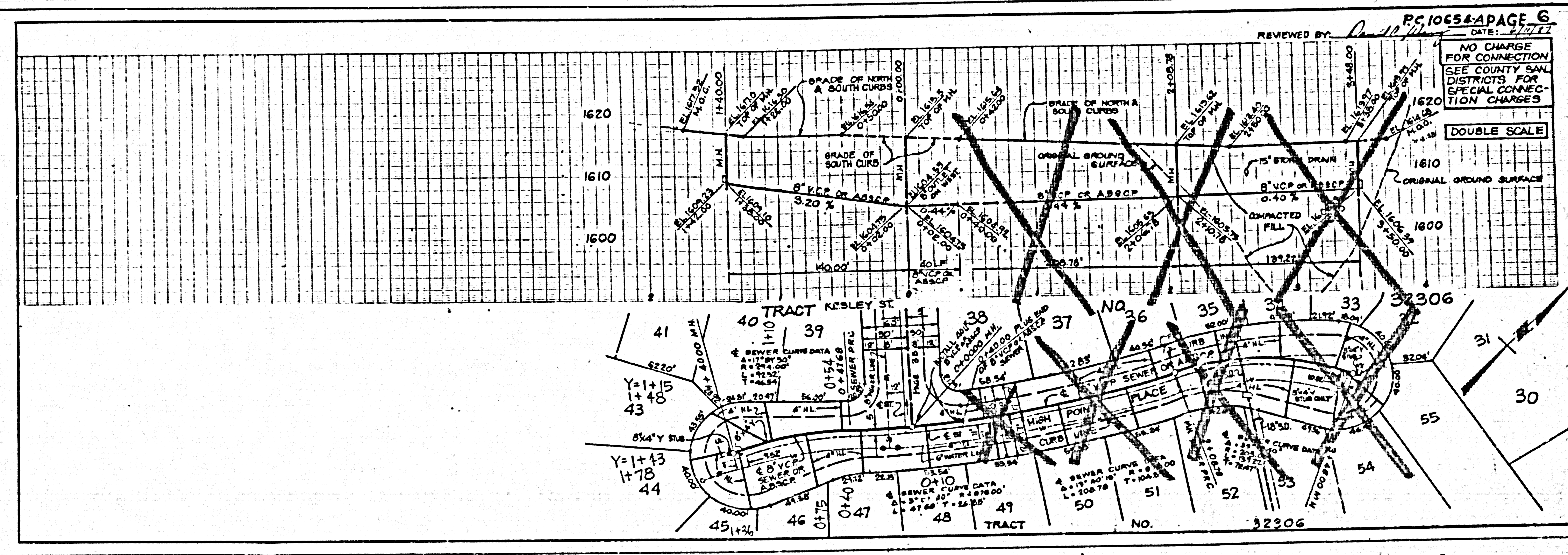
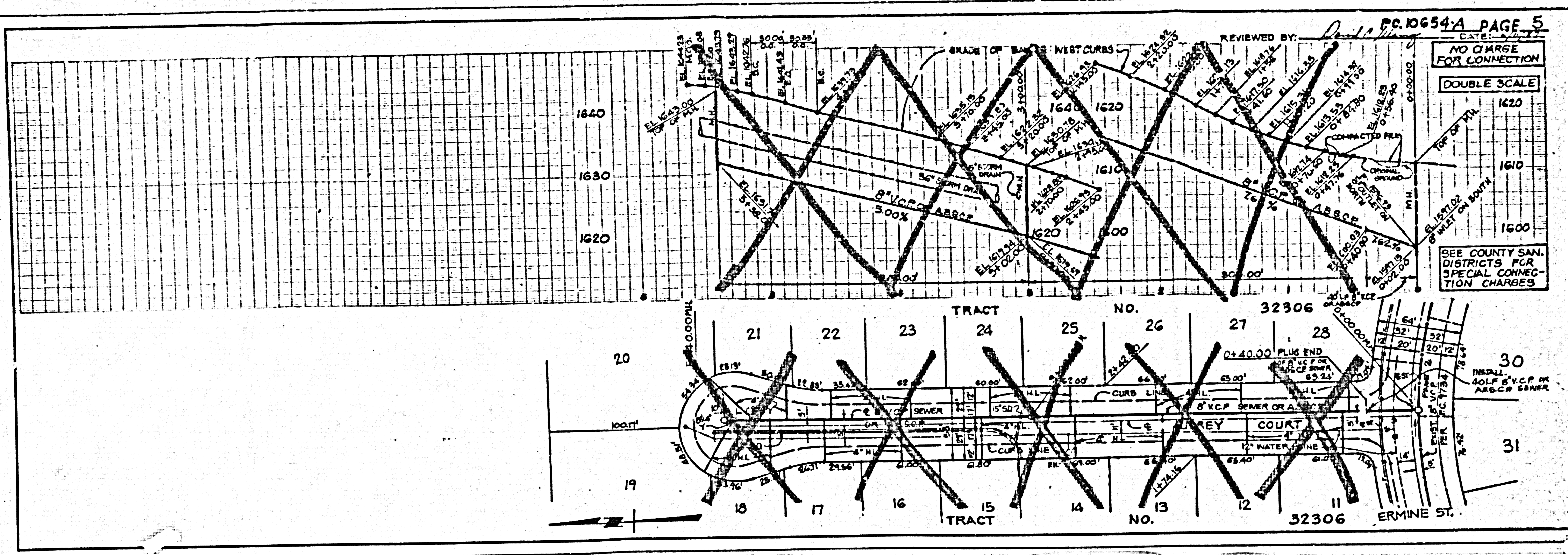
EX. V.C.P. 0.64%  
EX. V.C.P. 0.64%  
EX. V.C.P. 0.64%





5-18-87  
 PC. 10654A  
 TRACT NO. 32306





5-18-87

TRACT NO. 32306 PC. 10654A(3)

TR 32306 JN 0922-400.5