

B.M. C.L. 2566 ELEV. 2563.833
 L & BN CONC. FOOTING FOR 5 FT.
 CH. LK. FN. @ NE COR. AVE. M-4 & 60TH
 ST. W. 35 FT. E. & 42 FT. N. CL. INT. MKD. BM.
 PALMDALE QUAD. 19 80.

PRIVATE ENGINEER'S NOTICE TO CONTRACTORS

THE EXISTENCE AND LOCATION OF ANY UNDERGROUND UTILITY LINES OR STRUCTURES SHOWN ON THESE PLANS ARE OBTAINED BY A SEARCH OF THE AVAILABLE RECORDS. TO THE BEST OF OUR KNOWLEDGE THERE ARE NO EXISTING UTILITY LINES SHOWN ON THESE PLANS. THE CONTRACTOR IS REQUIRED TO TAKE THE NECESSARY PRECAUTIONARY MEASURES TO PROTECT THE UTILITY LINES SHOWN AND ANY OTHER LINES NOT OF RECORD OR NOT SHOWN ON THESE PLANS. THE CONTRACTOR SHALL BE RESPONSIBLE FOR NOTIFYING UNDERGROUND SERVICE ALERT AT 1-800-422-4122 TWO WORKING DAYS PRIOR TO ANY EXCAVATION OR CONSTRUCTION.

Dean E. Williams
 REGISTERED ENGINEER A.C.E. NO. 18723

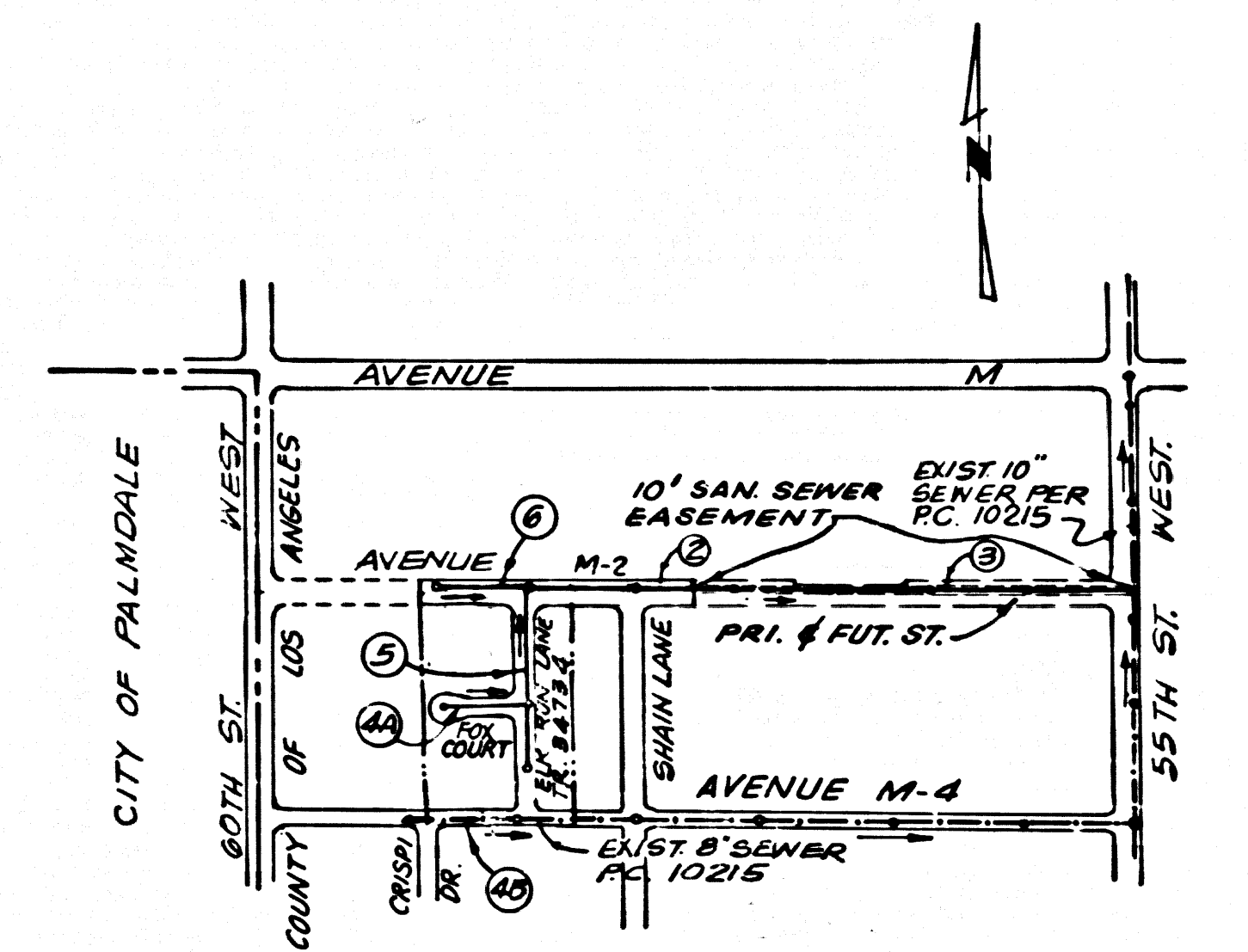
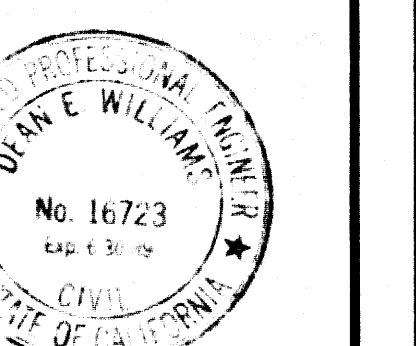
GENERAL NOTES:

- DOUBLE SCALE**
- ELEVATIONS ARE IN FEET ABOVE U.S.C. & G.S. SEA LEVEL DATUM OF 1985.
 - NO RECORDS SHALL BE MADE IN THESE PLANS WITHOUT THE APPROVAL OF THE DEPT. OF PUBLIC WORKS.
 - NO REPRESENTATIVE OF THE DEPT. OF PUBLIC WORKS WILL SURVEY OR LAY OUT ANY PORTION OF THE WORK.
 - GRADES TO WHICH THIS IMPROVEMENT IS TO BE CONSTRUCTED ARE SHOWN ON PLANS AND PROFILES. GRADE POINTS FOR TOP OF CURBS, CENTERLINE OF STREETS, OR CENTERLINE OF ALLEYS ARE SHOWN BY CIRCLES ON PROFILES. AT ALL POINTS BETWEEN DESIGNATED POINTS THE GRADE SHALL BE ESTABLISHED SO AS TO CONFORM TO A STRAIGHT LINE DRAWN BETWEEN SAID DESIGNATED POINTS.
 - THE PRIVATE ENGINEER SHALL FURNISH THE DEPT. OF PUBLIC WORKS WITH GRADE SHEETS AND STATIONING FOR ALL HOUSE LATERALS AND "T" OR "Y" BRANCHES AND SHALL PROVIDE STAKES FOR THEM AT THEIR PROPER LOCATIONS WITH STATIONING PLAINLY MARKED. ALL HOUSE LATERALS SHALL BE CONSTRUCTED IN A STRAIGHT ALIGNMENT AT RIGHT ANGLES FROM THE MAIN LINE SEWER EXCEPT AS SHOWN ON THE PLANS. HOUSE LATERALS FROM CHIMNEYS SHALL NOT HAVE AN ANGLE OF LESS THAN 45° WITH THE MAIN LINE SEWER. ANY CHANGE IN ALIGNMENT SHALL BE REQUESTED IN WRITING BY THE PRIVATE ENGINEER.
 - THE PRIVATE ENGINEER SHALL FURNISH THE HOUSE LATERAL DEPTH AT THE PROPERTY LINE, BELOW THE TOP OF CURB ELEVATION FOR EACH HOUSE LATERAL ON THE GRADE SHEET.
 - BEFORE WORK CAN BE STARTED THE CONTRACTOR MUST OBTAIN A PERMIT TO EXCAVATE IN COUNTY STREETS FROM THE COMST DIV. OF THE U.L. CO. DEPT. OF PUBLIC WORKS PERMIT OFFICE, 800 S. FRENCH AVENUE, ALHAMBRA, CA 91803.
 - THE CONTRACTOR SHALL COVER THE COST OF CONSTRUCTION INSPECTION AND RECORD PLANS.
 - IF WORK IS TO BE DONE IN A STATE HIGHWAY, A PERMIT MUST BE OBTAINED FROM THE STATE OF CALIFORNIA, DIVISION OF HIGHWAYS, 120 SOUTH SPRING STREET, LOS ANGELES, CALIFORNIA.
 - APPROVAL OF THIS PLAN BY THE COUNTY OF LOS ANGELES DOES NOT CONSTITUTE A REPRESENTATION AS TO THE ACCURACY OF THE LOCATION OF OR THE EXISTENCE OR NON-EXISTENCE OF ANY UNDERGROUND UTILITY PIPE, OR STRUCTURE WITHIN THE LIMITS OF THIS PROJECT. THIS NOTE APPLIES TO ALL PAGES.
 - REFER TO SECTION 7.10.4.1 OF THE STANDARD SPECIFICATIONS REGARDING SAFETY ORDERS.
 - PRIOR TO THE ISSUANCE OF THE REQUIRED SEWER CONSTRUCTION PERMIT, THE CONTRACTOR SHALL OBTAIN AND FILE WITH THE DEPT. OF PUBLIC WORKS COPIES OF A PERMIT TO EXCAVATE IN COUNTY STREETS FROM THE COMST DIV. OF THE DEPT. OF PUBLIC WORKS. A PERMIT FOR EXCAVATION AND TRENCHES FROM THE STATE OF CALIFORNIA, DIVISION OF INDUSTRIAL SAFETY AND A CERTIFICATE OF WORKERS' COMPENSATION INSURANCE WITH THE DEPARTMENT OF PUBLIC WORKS, 800 S. FRENCH AVENUE, ALHAMBRA, CALIF. 91803, MUST BE OBTAINED AND FILED WITH THE CERTIFICATE HOLDER 30 DAYS PRIOR TO CANCELLATION OF POLICY.

SANITARY SEWERS
 TO BE CONSTRUCTED IN
TRACT 34734
PRIVATE CONTRACT NO. 10660
INDEX A-292

3 SHEETS, 6 PAGES
 SCALE: VERT. 1" = 8' **DOUBLE SCALE** 12 - 10, 1995
 HORIZ. 1" = 40'

PREPARED IN THE OFFICES OF
MCUTCHAN PROPERTY CONSULTANTS, INC.
 288 N. SAN GABRIEL BLVD.
 PASADENA, CALIFORNIA 91107
 PHONE: (818) 793-5162
 BY: *Dean E. Williams*
 DEAN E. WILLIAMS REG. C.E. 18723



INDEX MAP
 P.C. 10660 TRACT NO. 34734
 SCALE: 1" = 600'

NOTE: NUMBERS IN CIRCLES
 INDICATE PAGE NUMBERS

NO CONNECTION FOR THE DISPOSAL OF INDUSTRIAL WASTES SHALL BE MADE TO SEWERS SHOWN ON THESE DRAWINGS UNTIL A PERMIT FOR INDUSTRIAL WASTEWATER DISCHARGE HAS BEEN ISSUED BY THE SANITATION DISTRICTS FOR SAID CONNECTION.

BEFORE BREAKING INTO OR CONSTRUCTION ON A COUNTY SANITATION DISTRICT SEWER AND PRIOR TO FINAL ACCEPTANCE OF THE PROJECT, SANITATION DISTRICT INSPECTOR SHALL BE NOTIFIED BY PHONE (805) 947-5027 SO THAT REQUIRED INSPECTION CAN BE MADE.

LOT 8 IS A FLOOD HAZARD AREA RESTRICTED TO NO CONSTRUCTION AND WILL NOT BE SERVED BY THIS SEWER

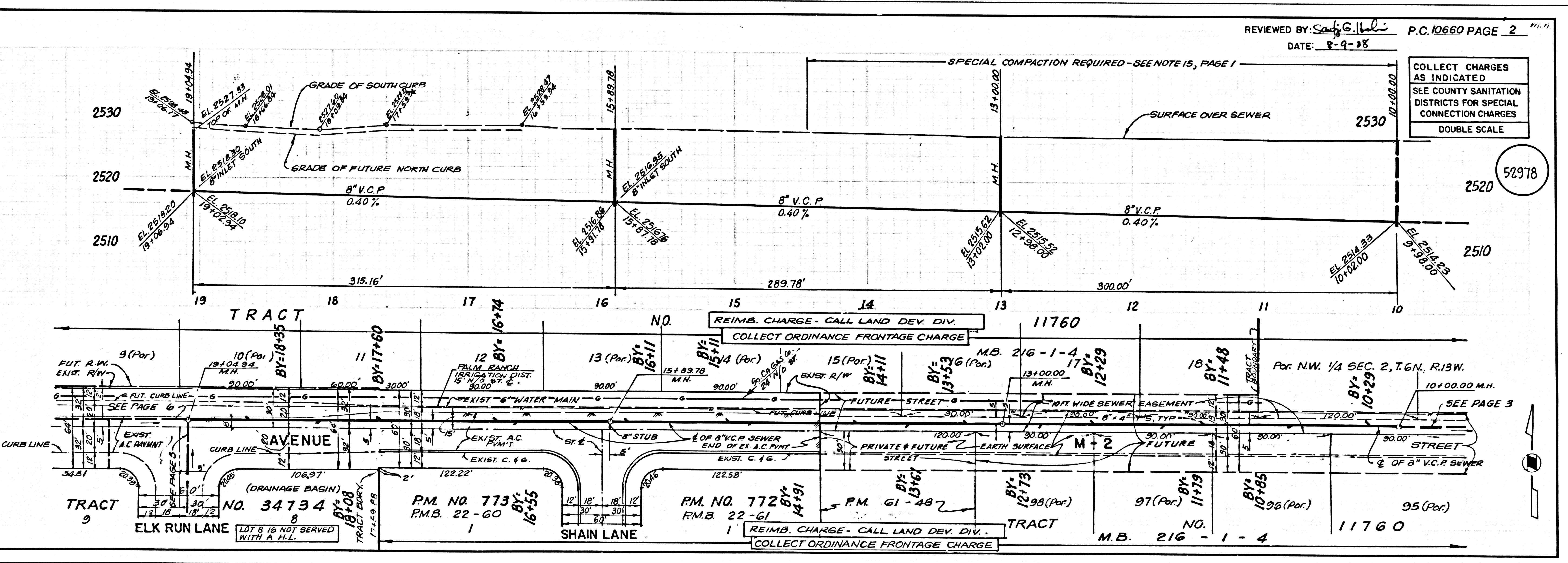
THE FOLLOWING LATEST REVISED STANDARD PLANS ON FILE IN THE OFFICE OF THE DEPARTMENT OF PUBLIC WORKS SHALL APPLY IN THE CONSTRUCTION OF THIS PROJECT:

LEGEND	5-1
MINIMUM PUBLIC SAFETY REQUIREMENTS	5-2
BRICK MANHOLE	5-3
STANDARD MANHOLE STEP	5-17
RECORDS FOR SEWER PIPE	5-21
CHASING AND ENCASEMENT	5-22
WYE OR TEE SUPPORT	5-28
ALLOWABLE TRENCH WIDTH	5-28
LOCKING MANHOLE FRAME AND COVER	5-28
NON-REINFORCED PRECAST CONCRETE MANHOLE	5-28
SADDLES FOR HOUSE LATERALS	5-29
SPECIAL HOUSE LATERALS	5-25

COUNTY OF LOS ANGELES, CALIFORNIA
 THOMAS A. TIDEMANSON, DIRECTOR
 DEPARTMENT OF PUBLIC WORKS
 APPROVED: *Thomas A. Tidemanson* 8-11-88
 CHECKED: *James J. Jones* 8-11-88
 REG. C.E. NO. 13,116

CHARLES W. CARRY, CHIEF ENGINEER
 CO. SAN. DIST. NO. 14
 APPROVED: *Charles W. Carry*
 OFFICE ENGINEER
 DATE: 8/15/88

LANCASTER BLDG. DIST. 8



REVIEWED BY: *Sally G. Hill*
 DATE: 8-9-88

COLLECT CHARGES AS INDICATED
 SEE COUNTY SANITATION DISTRICTS FOR SPECIAL CONNECTION CHARGES
DOUBLE SCALE

TRACT 34734
 (DRAINAGE BASIN)
 LOT 8 IS NOT SERVED WITH A H.L.

PM NO. 773
 R.M.B. 22-60

PM NO. 772
 R.M.B. 22-61

REIMB. CHARGE - CALL LAND DEV. DIV.
 COLLECT ORDINANCE FRONTAGE CHARGE

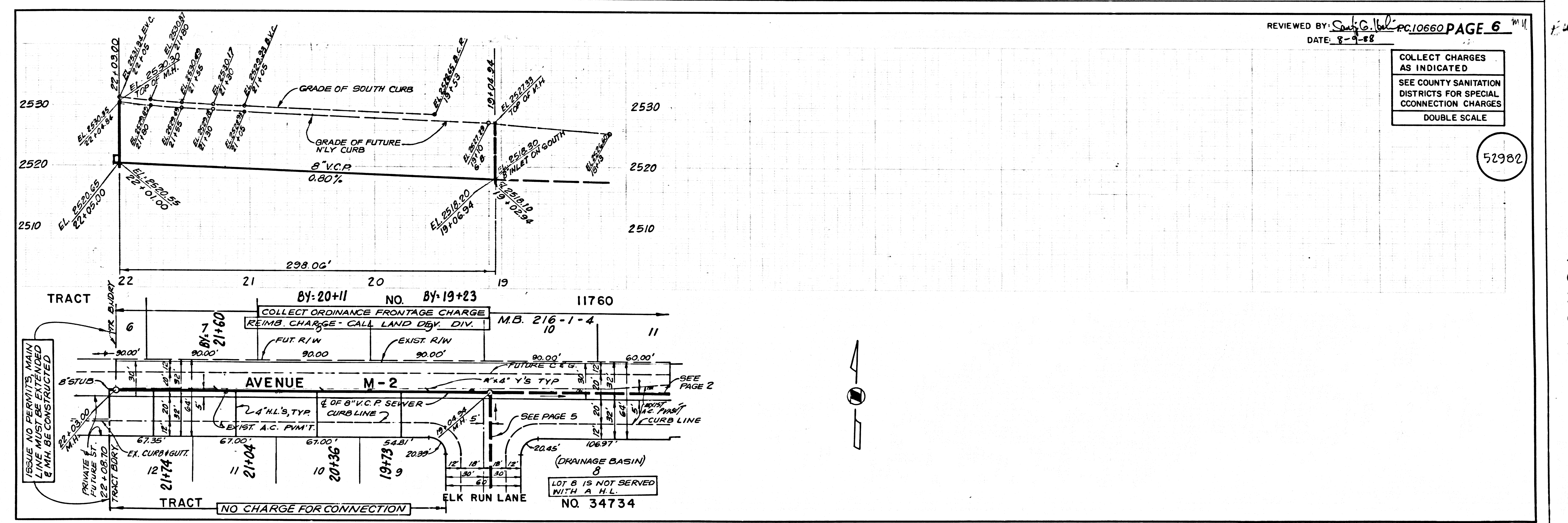
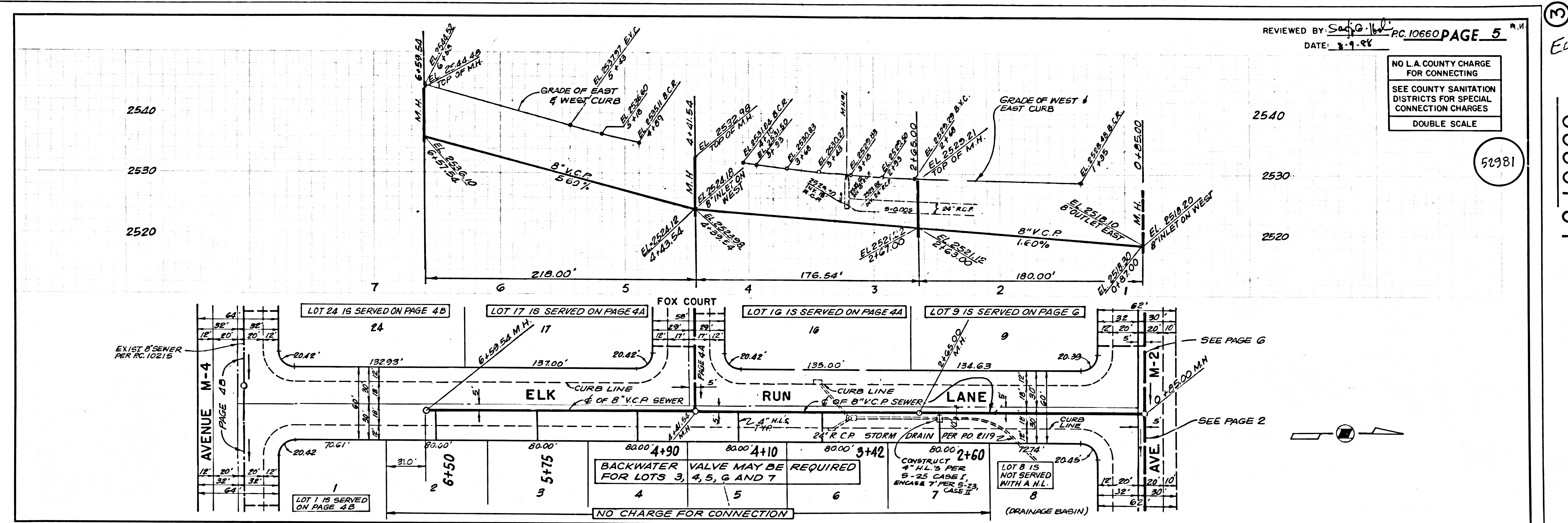
EW

090109

52977

EL

45743 ON TRACT



PC 10660

PC 10660