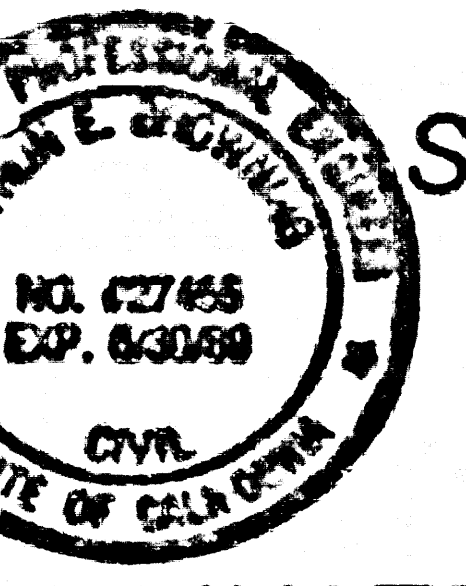


SANITARY SEWERS

TO BE CONSTRUCTED IN
TRACT NO. 43139



PRIVATE CONTRACT NO. 10662
INDEX A-159

4 SHEETS; 8 PAGES

52437

SCALE: VERT. 1"=4' HORIZ. 1"=40'

JANUARY, 1987

PREPARED IN THE OFFICES OF
KEITH ENGINEERS, NORTH COUNTY INC.
1608 EAST PALMDALE BOULEVARD, SUITE C
PALMDALE, CALIFORNIA 93550
BY **Angela L. Williams**
REG. C.E. NO. 37445

THE FOLLOWING LATEST REVISED STANDARD PLANS ON FILE IN THE OFFICE OF THE DEPARTMENT OF PUBLIC WORKS SHALL APPLY TO THE CONSTRUCTION OF THIS PROJECT

LEGEND	8-1
MINIMUM PUBLIC SAFETY REQUIREMENTS	8-2
BRICK SEWER MANHOLE	8-3
STANDARD MANHOLE STEP	8-11
BEDDING FOR SEWER PIPE	8-17
CRACKING AND ENCASUREMENT	8-23
WYE OR TEE SUPPORT	8-26
ALLOWABLE TRENCH WIDTHS	8-33
LOCKING MANHOLE FRAME AND COVER	8-36
NON-REINFORCED PRECAST CONCRETE SEWER MANHOLE	8-38

COUNTY OF LOS ANGELES, CALIFORNIA
THOMAS A. TIDEMANSON
DIRECTOR OF PUBLIC WORKS

CHARLES W. CARY
CHIEF ENGINEER

APPROVED **Dean E. Hottel** 9/29/87
APPROVED **Alan E. Givens** 10/4/87

CHECKED **Edna Williams** 9/26/87
REG. C.E. NO. 16241

LANCASTER BLDG. DIST. 81

PRIVATE ENGINEER'S NOTICE TO CONTRACTORS

THE EXISTENCE AND LOCATION OF ANY UNDERGROUND UTILITY PIPES OR STRUCTURES SHOWN ON THESE PLANS ARE OBTAINED BY A SEARCH OF THE AVAILABLE RECORDS TO THE BEST OF OUR KNOWLEDGE THERE ARE NO EXISTING UTILITIES... EXCEPT AS SHOWN ON THESE PLANS. THE CONTRACTOR IS REQUIRED TO TAKE THE PRECAUTIONARY MEASURES TO PROTECT THE UTILITIES SHOWN AND ANY OTHER LINES NOT OF RECORD OR NOT SHOWN ON THESE PLANS. THE CONTRACTOR SHALL BE RESPONSIBLE FOR NOTIFYING THE NEARBY UTILITY SERVICE AGENCY AT 1-800-47-4133 PRIOR TO ANY EXCAVATION OR CONSTRUCTION.

CONSTRUCTION NOTES CONT.

- FULL COMPLIANCE WITH PART IV OF THE SPECIAL PROVISIONS IS REQUIRED FOR THE INSTALLATION OF A B S COMPOSITE PIPE
- MANHOLE WATER STOP GASKETS AND CLAMPS ARE REQUIRED FOR THE CONNECTION OF A B S COMPOSITE PIPE TO MANHOLE STRUCTURES
- A B S SOLID WALL PIPE MUST BE USED FOR WYE AND HOUSE LATERAL CONNECTIONS TO A B S COMPOSITE MAINLINE SEWER PIPE
- A B S COMPOSITE PIPE SHALL BE BEDDED IN CONFORMANCE WITH THE TABLE IN SECTION B-31 OF PART IV OF THE SPECIAL PROVISIONS
- THREE DEGREE DEFLECTION COUPLERS ARE REQUIRED FOR RADII OF CURVATURE LESS THAN 300 FEET WHEN USING A B S COMPOSITE PIPE
- NO CONNECTIONS FOR DISPOSAL OF INDUSTRIAL WASTE IS ALLOWED IF A B S COMPOSITE PIPE IS USED
- SEWER LINE CURVATURE SHALL NOT BE ACHIEVED BY PULLING OF JOINTS OR BY USING PLASTIC PIPE INCLUDING A B S COMPOSITE PIPE
- ALL WYES AND/OR HOUSE LATERALS ARE TO BE LOCATED AT LEAST FIVE FEET APART AND WHEN POSSIBLE NOT CLOSER THAN FIVE FEET TO ANY MANHOLE
- A B S SOLID WALL PIPE IS NOT ACCEPTABLE FOR USE AS MAINLINE SEWER
- ONLY WYE BRANCHES ARE TO BE USED FOR CONNECTION TO A B S COMPOSITE MAINLINE SEWER PIPE

REVISION NO. 1 DATE APRIL 10, 1988
EXTEND MAIN TO ALLOW A 90° CONNECTION TO THE LATERALS. PAGE 3, STATION 3+94.69 AND PAGE 3, STATION 3+94.69.
APPROVED **Alan E. Givens** 4-22-88

NO CONNECTION FOR THE DISPOSAL OF INDUSTRIAL WASTES SHALL BE MADE TO SEWERS SHOWN ON THESE DRAWINGS UNTIL A PERMIT FOR INDUSTRIAL WASTEWATER DISCHARGE HAS BEEN ISSUED BY THE SANITATION DISTRICTS FOR SAID CONNECTION
BEFORE BREAKING INTO OR CONSTRUCTION ON A COUNTY SANITATION DISTRICT SEWER AND PRIOR TO FINAL ACCEPTANCE OF THE PROJECT, SANITATION DISTRICT INSPECTOR SHALL BE NOTIFIED BY PHONE (805) 947-5027 SO THAT REQUIRED INSPECTION CAN BE MADE.

ISSUE NO HOUSE CONNECTION PERMIT UNTIL OUTLET SEWER RC 10661 IS ACCEPTED FOR PUBLIC USE BY THE COUNTY OF LOS ANGELES.

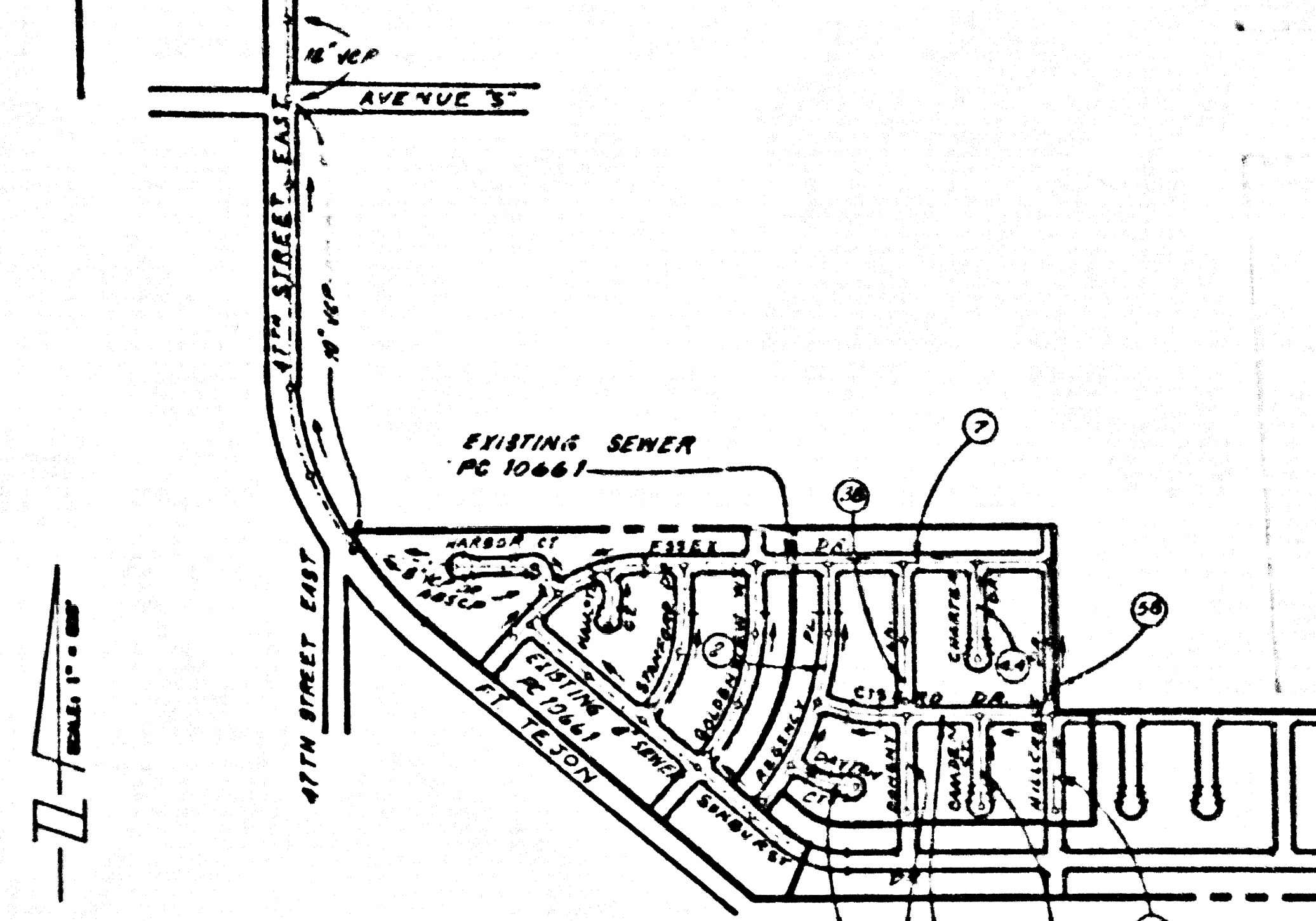
GENERAL NOTES:

- ELEVATIONS ARE IN FEET ABOVE U.S.C. & G.S. SEA LEVEL DATUM OF 1929
- NO REVISIONS SHALL BE MADE IN THESE PLANS WITHOUT THE APPROVAL OF THE DIRECTOR OF PUBLIC WORKS
- NO REPRESENTATIVE OF THE DEPARTMENT OF PUBLIC WORKS WILL SURVEY OR LAY OUT ANY PORTION OF THE ROAD
- GRADE TO WHICH THIS IMPROVEMENT IS TO BE CONSTRUCTED IS SHOWN ON PLAN AND INDICATED GRADE POINTS FOR TOP OF CURB, CENTER LINE OF STREETS OR CENTER LINE OF ALLIAYS ARE SHOWN BY CIRCLES ON PROFILES AT ALL POINTS WHERE DESIGNATED POINTS THE GRADE SHALL BE ESTABLISHED SO AS TO CONFORM TO A STRAIGHT LINE DRAWN BETWEEN SAID DESIGNATED POINTS
- THE PRIVATE ENGINEER SHALL FURNISH THE DEPARTMENT OF PUBLIC WORKS WITH ONE SET OF SHEETS AND STATIONING FOR ALL HOUSE LATERALS AND 10' OR 15' BRANCHES FOR THEM AT THE PROPER LOCATION WITHIN THE PLANNED PLACEMENT MARKED ALL HOUSE LATERALS SHALL BE CONSTRUCTED TO THE POINTS INDICATED FROM THE MAIN LINE SEWER AS SHOWN ON THE PLANS. HOUSE LATERALS SHALL NOT HAVE AN ANGLE OF LESS THAN 45° WITH THE MAIN LINE SEWER. ANY CHANGE IN ALIGNMENT SHALL BE INDICATED IN WRITING BY THE PRIVATE ENGINEER
- THE PRIVATE ENGINEER SHALL FURNISH THE HOUSE LATERAL DEPTH AT THE PROPERTY LINE BELOW THE TOP OF CURB ELEVATION FOR EACH HOUSE LATERAL ON THE GRADE SHEET
- BEFORE WORK CAN BE STARTED, THE CONTRACTOR SHALL OBTAIN A PERMIT TO EXCAVATE IN COUNTY STREETS FROM THE CONST. DIV. OF THE LOS ANGELES DEPARTMENT OF PUBLIC WORKS. PERMIT OFFICE NO. 5... AND PAY A FEE TO THE DIRECTOR OF PUBLIC WORKS \$250.00. ALSO PAY \$1.00 PER LINE FOOT FOR THE COST OF CONSTRUCTION INSPECTION AND RECORD PLANS.
- IF WORK IS TO BE DONE ON A STATE HIGHWAY A PERMIT MUST BE OBTAINED FROM THE STATE OF CALIFORNIA, DIVISION OF HIGHWAYS, 130 SOUTH SPRING STREET, LOS ANGELES, CALIFORNIA.
- APPROVAL OF THIS PLAN BY THE COUNTY OF LOS ANGELES DOES NOT CONSTITUTE A REPRESENTATION AS TO THE ACCURACY OF THE LOCATION OR THE EXISTENCE OR NON-EXISTENCE OF ANY UNDERGROUND UTILITY PIPE OR STRUCTURE WITHIN THE LIMITS OF THIS PROJECT. THIS NOTE APPLIES TO ALL PAGES.
- REFER TO SECTION 710.4.1 OF THE STANDARD SPECIFICATIONS REGARDING SAFETY ORDERS
- PRIOR TO THE ISSUANCE OF THE REQUIRED SEWER CONSTRUCTION PERMIT THE CONTRACTOR MUST OBTAIN AND FILE WITH THE DEPARTMENT OF PUBLIC WORKS COPIES OF A PERMIT TO EXCAVATE IN COUNTY STREETS FROM THE CONST. DIV. AT THE DEPARTMENT OF PUBLIC WORKS. A PERMIT FOR EXCAVATIONS AND TRENCHES FROM THE STATE OF CALIFORNIA, DIVISION OF INDUSTRIAL SAFETY AND A CERTIFICATE OF WORKERS COMPENSATION INSURANCE WITH THE DEPARTMENT OF PUBLIC WORKS, 2500 BLVD. 24R 33 LOS ANGELES, CALIFORNIA 90033, MUST BE OBTAINED AS THE CERTIFICATE HOLDER TO BE NOTIFIED 30 DAYS PRIOR TO CANCELLATION OF POLICY.

CONSTRUCTION NOTES:

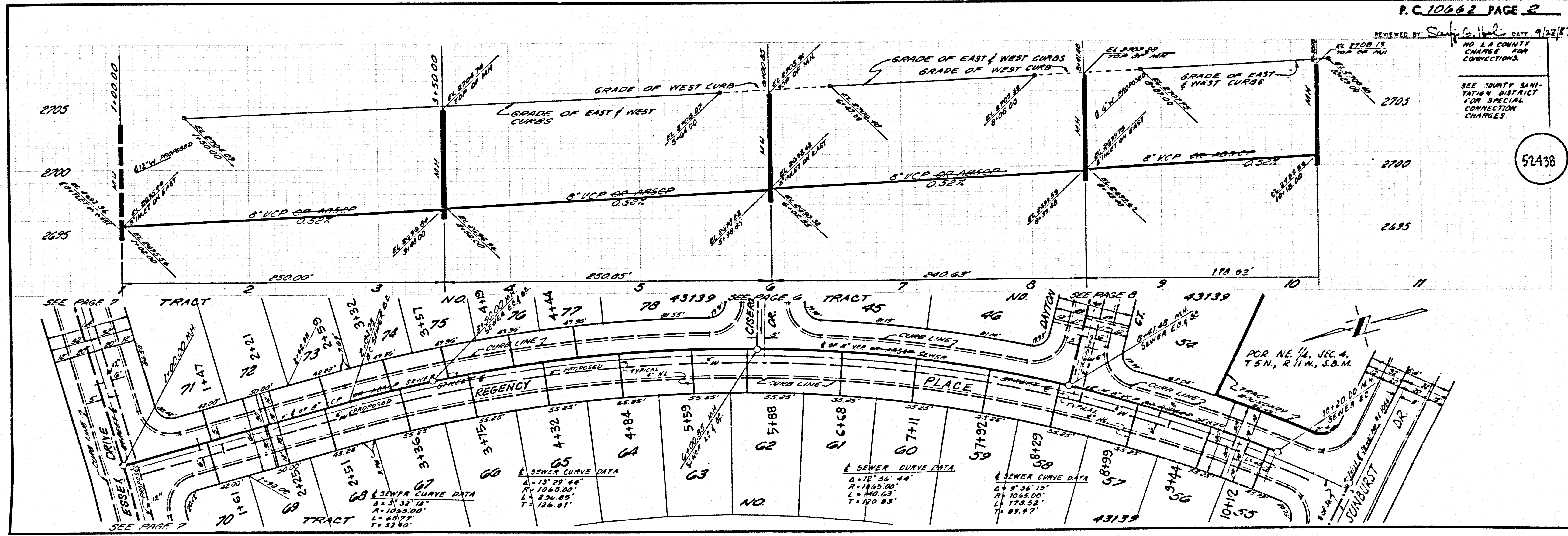
- WORK SHALL BE CONSTRUCTED ACCORDING TO THE STANDARD SPECIFICATIONS FOR PUBLIC WORKS CONSTRUCTION 1986 EDITION WITH 1988 AND 1989 AMENDMENTS AND DEPT. OF PUBLIC WORKS SPECIAL PROVISIONS FOR THE CONSTRUCTION OF SANITARY SEWERS DATED SEPTEMBER 21, 1979. AND SHALL BE PROSECUTED ONLY IN THE PRESENCE OF THE DEPT. OF PUBLIC WORKS.
- THE CONTRACTOR SHALL NOTIFY THE CONSTRUCTION DIVISION BY TELEPHONE 228-8281 AT LEAST TWENTY FOUR HOURS BEFORE STARTING ANY WORK UNDER THIS CONTRACT.
- HOUSE LATERALS TO BE CONSTRUCTED WITH INVERTS AT PROPERTY LINE 8 FEET BELOW CURB GRADE EXCEPT AS NOTED
- WYE OR TEE BRANCHES MAY BE USED FOR CONNECTIONS TO MAINLINE SEWERS EXCEPT AS NOTED
- ALL STRUCTURES SHALL BE EITHER BRICK MANHOLES PER 8-3 OR PRECAST CONCRETE MANHOLES PER 8-36, EXCEPT AS NOTED
- PROVIDE STAKES ON THE PROPERTY LINE OR PROPERTY LINES PRODUCED AT RIGHT ANGLES TO THE SEWER LINE AT THE CENTER LINE OF EACH MANHOLE
- MANHOLE TOPS IN UNIMPROVED RIGHTS OF WAY TO BE SIX INCHES ABOVE FINISHED GRADE
- WITHELD CLAY PIPE JOINTS SHALL BE TYPE "C" OR "D" PER STANDARD SPECIFICATIONS SECTION 200-3
- IF A POWER POLE IS WITHIN THREE FEET OF THE SEWER THE SEWER SHALL BE ENCASED PER 8-22, CASE II TWO FEET ON EACH SIDE FROM THE POINT OF INTERFERENCE
- IF DURING THE COURSE OF CONSTRUCTION IT IS DETERMINED THAT THERE IS LESS THAN FOUR FEET OF COVER OVER THE TOP OF A MAINLINE OR HOUSE LATERAL, V.C.P. SEWER WHICH IS NOT INDICATED ON THE PLANS, THE PIPE SHALL BE ENCASED PER 8-22, CASE II UNLESS OTHERWISE APPROVED BY THE DIRECTOR OF PUBLIC WORKS
- ALL JOINTS BE THREE CAST IRON PIPE AND WITHELD CLAY PIPE SHALL BE MADE WITH A RUBBER SLEEVE JOINT, TYPE "C" OR "D" (WITH BRUSHES IF NECESSARY) PER STANDARD SPECIFICATIONS, SECTION 200-3
- SEWERS TO BE TESTED FOR LEAKAGE PER SECTION 200-1.4 OF THE STANDARD SPECIFICATIONS AND SPECIAL PROVISIONS
- RESURFACE ALL TRENCHES WITHIN PAVED AREAS TO MEET LOS ANGELES COUNTY PUBLIC WORKS OR CALIFORNIA STATE HIGHWAY REQUIREMENTS IN ACCORDANCE WITH PERMITS
- FULL COMPLIANCE WITH SECTION 200-1.3(A) OF THE STANDARD SPECIFICATIONS SHALL BE REQUIRED FOR BACKFILL IN STREETS. CERTIFICATION OF BACKFILL COMPACTION AND SAND REQUIREMENTS BY A QUALIFIED REVISIONS TESTING LABORATORY SHALL BE PROVIDED BY THE PERMITTEE PRIOR TO THE ISSUANCE OF A CERTIFICATE OF PARTIAL ACCEPTANCE
- SPECIAL BACKFILL IN BASEMENT CONSTRUCTION (IN BACKFILL TRENCH AND REPLACE OTHER EARTH) SO AS TO ACHIEVE THE NATURAL OR FINISHED GRADES AND SLOPES SHOWN ON THE GRADING PLAN APPROVED FOR THIS DEVELOPMENT BY THE LAND DEVELOPMENT DIVISION. IF ALL BACKFILL AND EARTH REPLACED SHALL BE COMPACTED TO A MINIMUM OF 90% OF MAXIMUM DENSITY PER A 1 1/2" STD METHOD OF TEST 0408 S17 AS MODIFIED. ACCEPTABLE CERTIFICATION OF SUCH COMPACTION SHALL BE SUBMITTED TO THE CONSTRUCTION DIVISION, DEPARTMENT OF PUBLIC WORKS.

B.M. C.C. 6512 ELEV. 1622.89
ELEV. 1622.89
35 FT. BY 40 FT. 5/8 IN. DIA. AT 10' DIA. INT. DIA. 36 IN.
FROM POINT 1500' ANGLE FROM MAINLINE POST 3 1/2' DIA. 1/4" DIA. 3/4"



INDEX MAP
SCALE: 1"=600'
P.C. 10662 TRACT NO. 43139

NOTE: NUMBERS IN CIRCLES INDICATE PAGE NUMBERS.



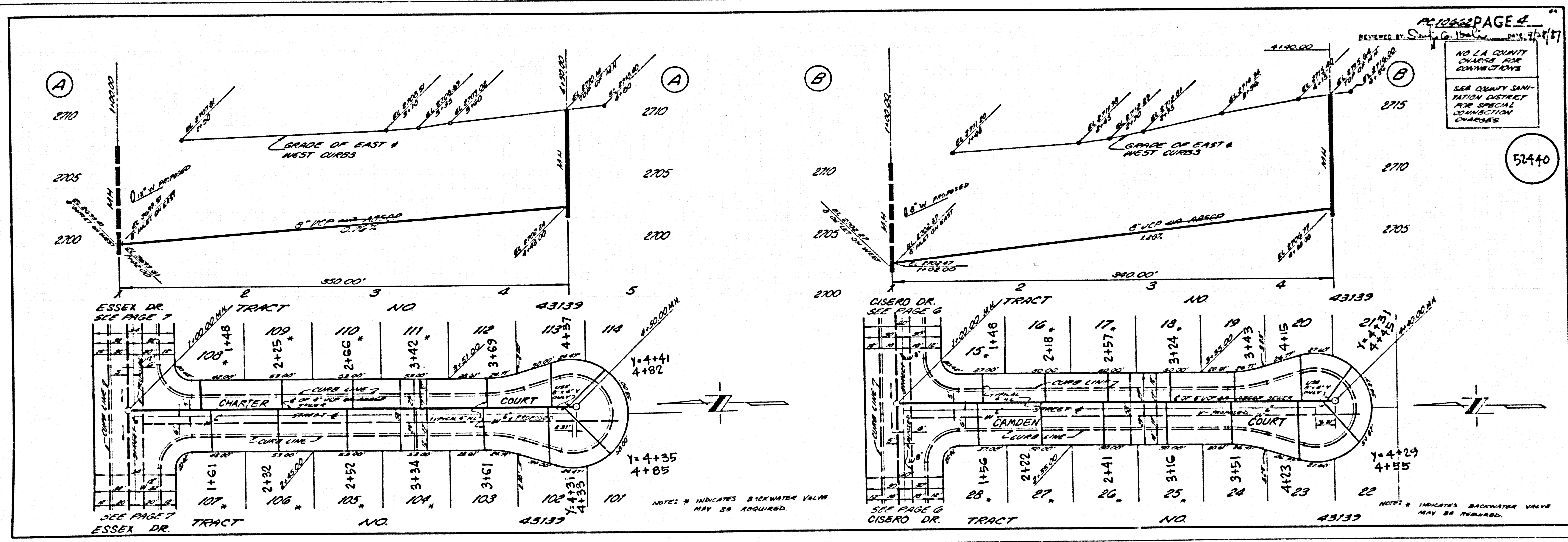
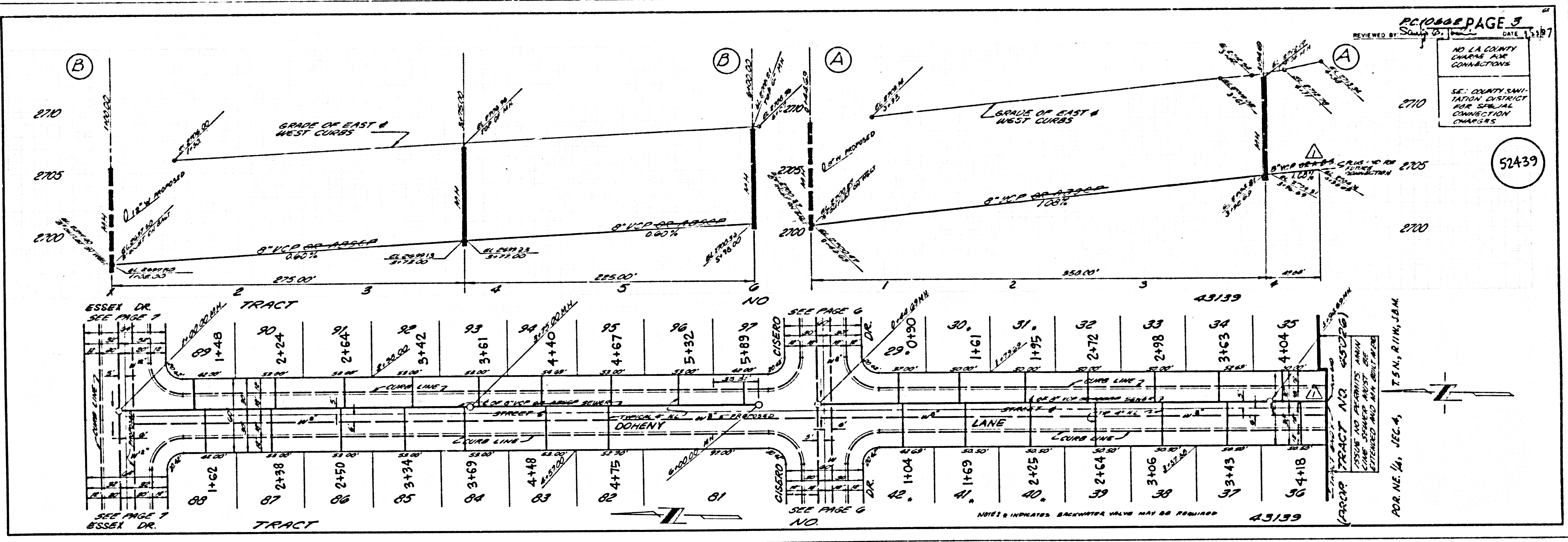
P.C. 10662 PAGE 2

REVIEWED BY **Alan E. Givens** DATE 9/22/87

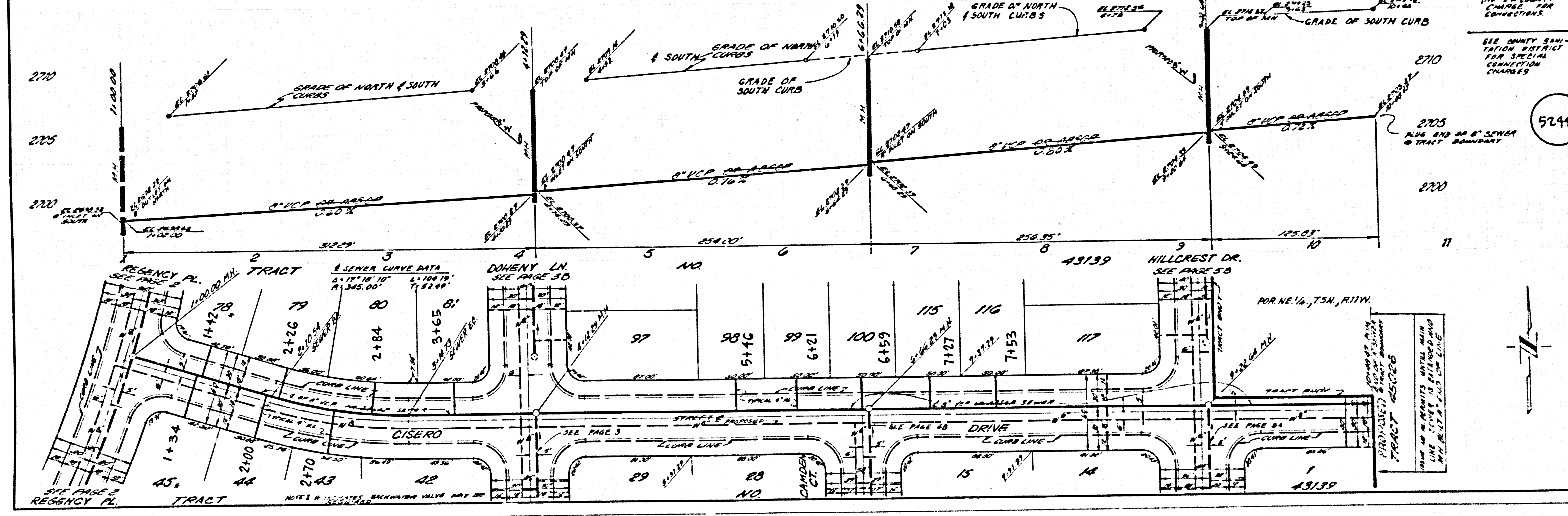
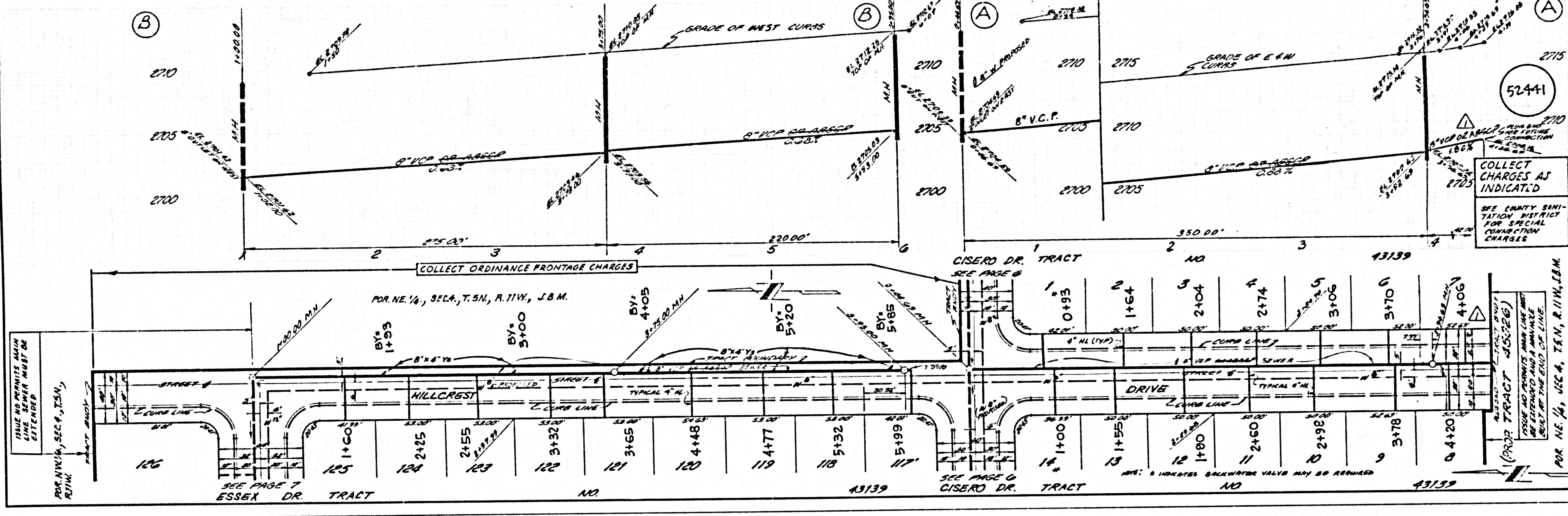
NO L.A. COUNTY CHARGE FOR CONNECTIONS.
SEE COUNTY SANITATION DISTRICT FOR SPECIAL CONNECTION CHARGES.

52438

Sheet 09 OF 13 EAST TRACT



ESSEX DR. TRACT NO. 43139



52441
52442
CISERO DR TRACT