

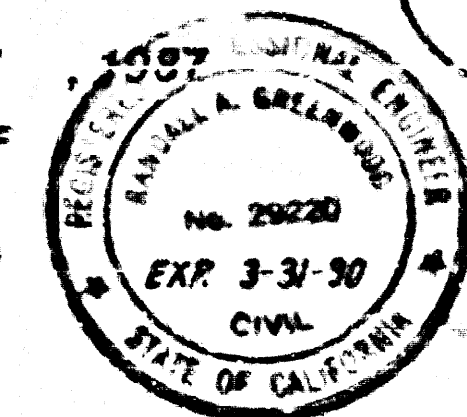
SANITARY SEWERS
TO BE CONSTRUCTED IN
TRACT NO. 44460

PRIVATE CONTRACT NO. 10664

INDEX A-30
9 SHEETS, 18 PAGES

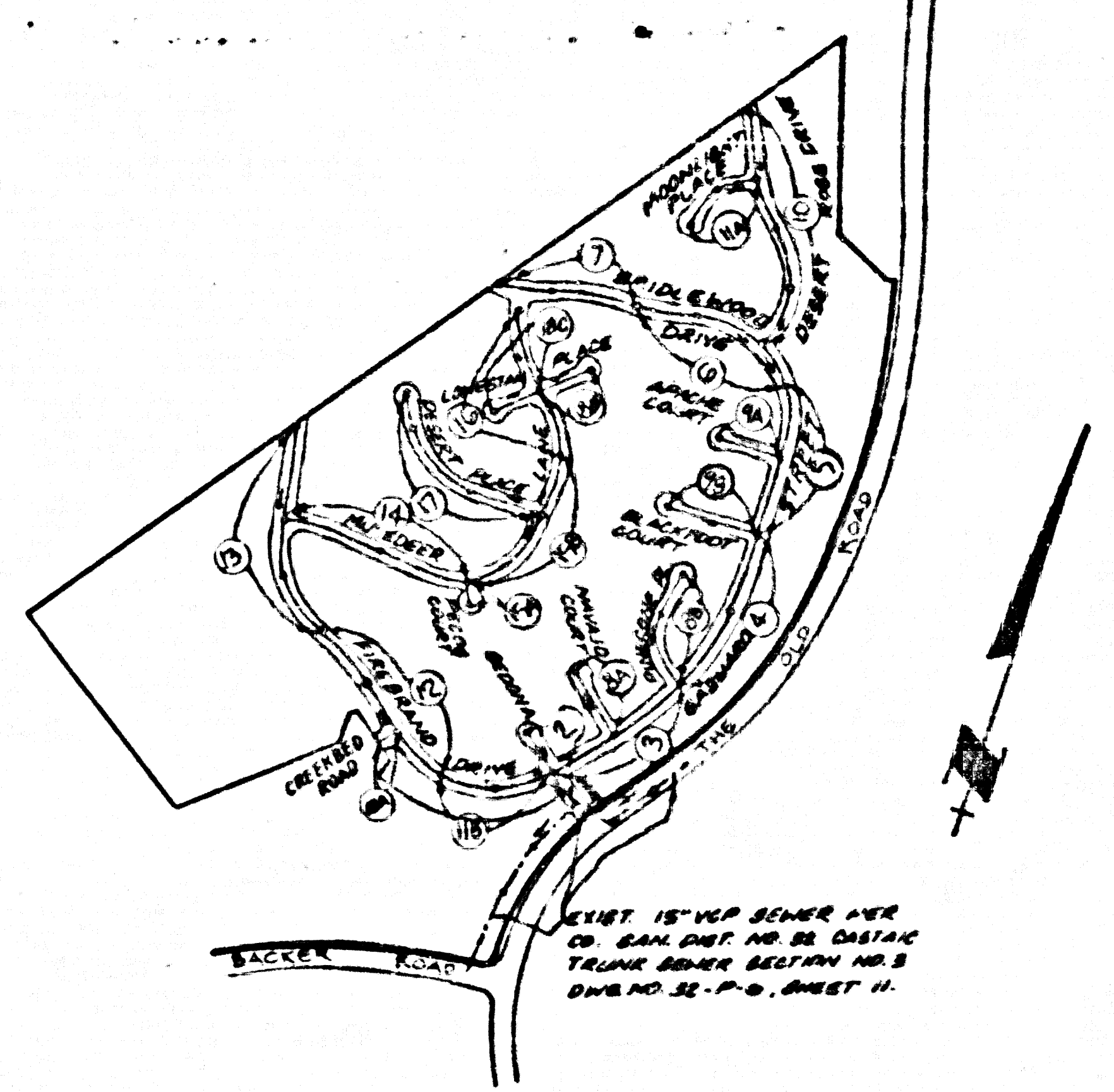
SCALE: VERT 1"=8'
HORIZ 1"=20'

PREPARED IN THE OFFICES OF
SIXANO ENGINEERING ASSOCIATES
15240 BURBANK BLVD. 15TH FLOOR
CALIFORNIA 91404 (619) 747-8580
BY: **L.O. Invernizzi**
REQ. C.E. No. 23220



DOUBLE SCALE

S.M. CL. 3976 ELEV. 1045.435
R.D.M. TAG IN CB 4 FT. N. B.C.
70 FT. N. 43 FT. E. CUL. INT. THE
OLD ROAD & HASLEY CN. ROAD
OFFRAMP
NEHHALL QUAD. 19 83



INDEX MAP
SCALE 1"=400'
P.C. 10664
TRACT NO. 44460

NOTE: NUMBERS IN CIRCLES INDICATE PAGE NUMBERS.

- CONSTRUCTION NOTES: CONT'D.
14. FULL COMPLIANCE WITH PART III OF THE SPECIAL PROVISIONS IS REQUIRED FOR THE INSTALLATION OF A.B.S. COMPOSITE PIPE.
 15. MANHOLE WATER STOP GASKETS AND CLAMPS ARE REQUIRED FOR THE CONNECTION OF A.B.S. COMPOSITE PIPE TO MANHOLE STRUCTURES.
 16. A.B.S. SOLID WALL PIPE MUST BE USED FOR WYE AND HOUSE LATERAL CONNECTIONS TO A.B.S. COMPOSITE MAINLINE SEWER PIPE.
 17. A.B.S. COMPOSITE PIPE SHALL BE BEDDED IN CONFORMANCE WITH THE TABLE IN SECTION 9-31 PART III OF THE SPECIAL PROVISIONS.
 18. 3 DEGREE DEFLECTION COUPLERS MUST BE USED TO ACCOMPLISH RADIUS OF CURVATURE LESS THAN 90'.

BEFORE BREAKING INTO OR CONSTRUCTION ON A COUNTY SANITATION DISTRICT SEWER AND PRIOR TO FINAL ACCEPTANCE OF THE PROJECT, SANITATION DISTRICT INSPECTOR SHALL BE NOTIFIED BY PHONE (818) 962-8605 SO THAT REQUIRED INSPECTION CAN BE MADE.

NO CONNECTION FOR THE DISPOSAL OF INDUSTRIAL WASTES SHALL BE MADE TO SEWERS SHOWN ON THESE DRAWINGS UNTIL A PERMIT FOR INDUSTRIAL WASTEWATER DISCHARGE HAS BEEN ISSUED BY THE SANITATION DISTRICTS FOR SAID CONNECTION.

LOT 231 IS AN OPEN SPACE LOT RESTRICTED TO NO CONSTRUCTION & WILL NOT BE SERVED BY THIS SEWER.

GENERAL NOTES:

1. ELEVATIONS ARE IN FEET ABOVE U.S.C. & G.S. SEA LEVEL DATUM OF 1988.
2. NO REVISIONS SHALL BE MADE IN THESE PLANS WITHOUT THE APPROVAL OF THE DIRECTOR OF PUBLIC WORKS.
3. NO REPRESENTATIVE OF THE DEPARTMENT OF PUBLIC WORKS WILL SURVEY OR LAY OUT ANY PORTION OF THE WORK.
4. GRADES TO WHICH THIS IMPROVEMENT IS TO BE CONSTRUCTED ARE SHOWN ON CURB AND GUTTER GRADE POINTS FOR TOP OF CURB, CENTER LINE OF STREET OR CENTER LINE OF ALLIANCE SHOWN BY CIRCLES 2 INCH DIAMETER AT ALL POINTS BETWEEN DESIGNATED POINTS. THE GRADE SHALL BE ESTABLISHED SO AS TO CONFORM TO A STRAIGHT LINE DRAWN BETWEEN SAID DESIGNATED POINTS.
5. THE PRIVATE ENGINEER SHALL FURNISH THE DEPARTMENT OF PUBLIC WORKS WITH GRADE SHEETS AND STATIONING FOR ALL HOUSE LATERALS AND "T" OR "Y" BRANCHES AND SHALL PROVIDE STAKE FOR THEM AT THE PROPER LOCATIONS WITH STATIONING PLAINLY MARKED ALL HOUSE LATERALS SHALL BE CONSTRUCTED IN A STRAIGHT ALIGNMENT AT RIGHT ANGLES FROM THE MAINLINE SEWER EXCEPT AS SHOWN ON THE PLANS. HOUSE LATERALS FROM CURBSIDE SHALL NOT HAVE AN ANGLE OF LESS THAN 45° WITH THE MAINLINE SEWER. ANY CHANGE IN ALIGNMENT SHALL BE INDICATED IN WRITING BY THE PRIVATE ENGINEER.
6. THE PRIVATE ENGINEER SHALL FURNISH THE HOUSE LATERAL DEPTH AT THE PROPERTY LINE BELOW THE TOP OF CURB ELEVATION FOR EACH HOUSE LATERAL ON THE GRADE SHEET.
7. BEFORE WORK CAN BE STARTED, THE CONTRACTOR MUST OBTAIN A PERMIT TO EXCAVATE IN COUNTY STREETS FROM THE COUNTY. BY THE CITY OF LOS ANGELES DEPARTMENT OF PUBLIC WORKS, PERMIT OFFICE NO. 5. AND PAY A FEE TO THE DIRECTOR OF PUBLIC WORKS, 2250 ALCAZAR ST., LOS ANGELES, CALIFORNIA 90015 TO COVER THE COST OF CONSTRUCTION INSPECTION AND RECORD PLANS.
8. NO WORK TO DOBE IN A STATE HIGHWAY AREA MUST BE OBTAINED FROM THE ST. OF CALIFORNIA DIVISION OF HIGHWAYS, 150 SOUTH BRIDGE STREET, LOS ANGELES, CALIFORNIA.
9. APPROVAL OF THIS PLAN BY THE COUNTY OF LOS ANGELES DOES NOT CONSTITUTE A REPRESENTATION AS TO THE ACCURACY OF THE MATERIAL OR THE EXISTENCE OR NON-EXISTENCE OF ANY UNDERGROUND UTILITIES OR OBSTRUCTIONS WITHIN THE LIMITS OF THIS PROJECT. THIS NOTE APPLIES TO ALL PAGES.
10. REFER TO SECTION 9-31 OF THE STANDARD SPECIFICATIONS, REGARDING SAFETY ORDERS.
11. REFER TO THE BALANCE OF THE REQUIRED SEWER CONSTRUCTION PERMITS. THE CONTRACTOR SHALL OBTAIN AND FILE WITH THE DEPARTMENT OF PUBLIC WORKS COPIES OF PERMIT TO EXCAVATE IN COUNTY STREETS FROM THE COUNTY. BY THE DEPARTMENT OF PUBLIC WORKS, A PERMIT FOR EXCAVATIONS AND TRENCHES FROM THE STATE OF CALIFORNIA, DIVISION OF HIGHWAYS, A CERTIFICATE OF REQUIREMENTS COMPLETION INSURANCE WITH THE DEPARTMENT OF PUBLIC WORKS. SEE ALCAZAR, ST. LOS ANGELES, CALIFORNIA 90015, ROOM 408, NAMED AS THE CERTIFICATE HOLDER TO BE NOTIFIED 30 DAYS PRIOR TO CANCELLATION OF POLICY.

CONSTRUCTION NOTES:

1. WORK SHALL BE CONSTRUCTED ACCORDING TO THE STANDARD SPECIFICATIONS FOR PUBLIC WORKS COUNTY OF LOS ANGELES EDITION WITH SUPPLEMENTS AND REVISIONS AND ANY OTHER SPECIAL PROVISIONS FOR THE CONSTRUCTION OF SANITARY SEWERS DATED 1987, 8/15/87.
2. THE CONTRACTOR SHALL NOTIFY THE CONSTRUCTION DIVISION BY TELEPHONE 220-2291 AT LEAST TWENTY-FOUR HOURS BEFORE START-UP OF ANY WORK UNDER THIS CONTRACT.
3. HOUSE LATERALS TO BE CONSTRUCTED WITH INVERTS AT PROPERTY LINE 8 FEET BELOW CURB GRADE EXCEPT AS NOTED.
4. WYE OR "T" BRANCHES MAY BE USED FOR CONNECTIONS TO MAINLINE SEWERS EXCEPT AS NOTED.
5. ALL STRUCTURES SHALL BE EITHER BRICK MANHOLES PER 9-3 ON PRECAST CONCRETE MANHOLES PER 9-38 EXCEPT AS NOTED.
6. PROVIDE STAKES ON THE PROPERTY LINE OR PROPERTY LINES PRODUCED AT RIGHT ANGLES TO THE SEWER LINE AT THE CENTER LINE OF EACH MANHOLE.
7. MANHOLE TOPS IN UNIMPROVED AREAS TO BE SIX INCHES ABOVE FINISHED GRADE.
8. WITHEED CLAY PIPE JOINTS SHALL BE TYPE "D" OR "E" PER STANDARD SPECIFICATIONS SECTION 200-9.
9. IF A POWER POLE IS WITHIN THREE FEET OF THE SEWER, THE SEWER SHALL BE ENCASED PER 9-33, CASE II TWO FEET ON EACH SIDE FROM THE POINT OF INTERFERENCE.
10. IF DURING THE COURSE OF CONSTRUCTION IT IS DETERMINED THAT THERE IS LESS THAN FOUR FEET OF COVER OVER THE TOP OF A MAINLINE OR HOUSE LATERAL "Y" SEWER WHICH IS NOT INDICATED ON THE PLANS, THE PIPE SHALL BE ENCASED PER 9-33, CASE II UNLESS OTHERWISE APPROVED BY THE DIRECTOR OF PUBLIC WORKS.
11. ALL JOINTS BETWEEN CAST IRON PIPE AND WITHEED CLAY PIPE SHALL BE MADE WITH A RUBBER SLEEVE JOINT, TYPE "C" OR "D", WITHIN BUILDINGS AND NECESSARY PER STANDARD SPECIFICATIONS SECTION 200-9.
12. ALL JOINTS BETWEEN CAST IRON PIPE AND A.B.S. PIPE SHALL BE MADE WITH APPROVED FITTINGS.
13. SEWERS TO BE TESTED FOR LEAKAGE PER SECTION 200-14 OF THE STANDARD SPECIFICATIONS AND SPECIAL PROVISIONS.
14. FULL COMPLIANCE WITH SECTION 200-1.3A OF THE STANDARD SPECIFICATIONS WILL BE REQUIRED FOR BACKFILL IN STREETS. CERTIFICATION OF BACKFILL CONSTRUCTION AND SAND BOUNDARIES BY A QUALIFIED REGISTERED TESTING LABORATORY SHALL BE PROVIDED BY THE CONTRACTOR PRIOR TO THE ISSUANCE OF A CERTIFICATE OF PARTIAL ACCEPTANCE.
15. SPECIAL BACKFILL IN BASEMENT CONSTRUCTION IN BACKFILL TRENCH AND REPLACE OTHER EARTH SO AS TO ACHIEVE THE NATURAL OR FINISHED GRADE AND SLOPE SHOWN ON THE GRADING PLAN APPROVED FOR THIS DEVELOPMENT BY THE LAND DEVELOPMENT DIVISION. IF ALL BACKFILL AND EARTH REPLACED SHALL BE COMPACTED TO A MINIMUM OF 90% OF MAXIMUM DENSITY PER A 3" x 18" METHOD OF TEST D98177 AS MODIFIED. ACCEPTABLE CERTIFICATION OF SUCH COMPACTON SHALL BE SUBMITTED TO THE CONSTRUCTION DIVISION, DEPT. OF PUBLIC WORKS.

THE FOLLOWING LATEST REVISED STANDARD PLANS ON FILE IN THE OFFICE OF THE DEPARTMENT OF PUBLIC WORKS SHALL APPLY TO THE CONSTRUCTION OF THIS PROJECT:

LEGEND	9-7
MINIMUM PUBLIC SAFETY REQUIREMENTS	9-2
BRICK MANHOLE	9-3
STANDARD MANHOLE STEP	9-17
BEDDING FOR SEWER PIPE	9-27
CRAILING AND ENCASEMENT	9-33
WYE OR "T" SUPPORT	9-33
ALLOWABLE TRENCH WIDTHS	9-38
LOCKING MANHOLE FRAME AND COVER	9-38
NON-REINFORCED PRECAST CONCRETE MANHOLE	9-38
SPECIAL MANHOLE LETTERING	9-38
CURB AND GUTTER	9-42

IN ADDITION THE FOLLOWING COUNTY SANITATION DISTRICT STANDARDS SHALL APPLY TO THE CONSTRUCTION OF THIS PROJECT:

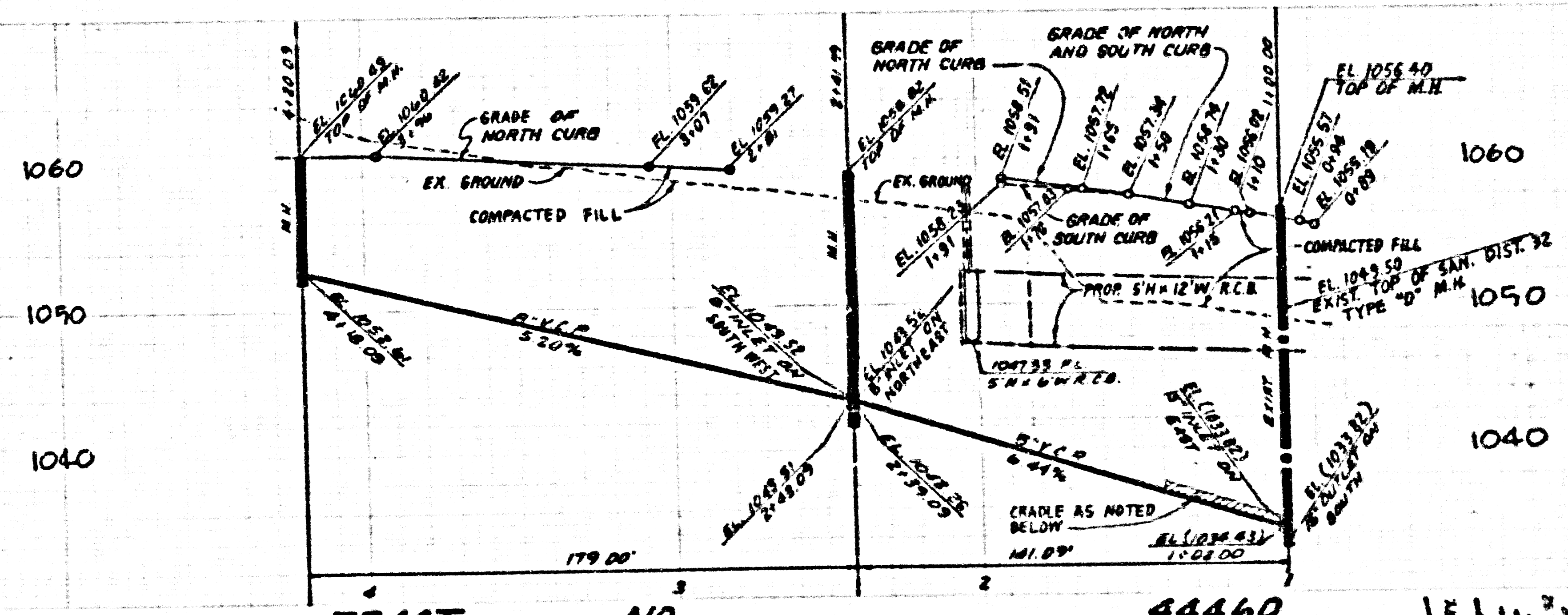
STANDARD MANHOLE TYPE "D" 9-8-234
TRENCHING AND COVER 9-8-234
COUNTY OF LOS ANGELES, CALIFORNIA
THOMAS A. TIDEMANSON, DIRECTOR OF PUBLIC WORKS
CHARLES W. CARRY, CHIEF ENGINEER

APPROVED: *Carl A. Blum* 9/3/87 (DATE) APPROVED: *Charles W. Carry* 9/1/87 (DATE)
CHECKED: *Fred* 9/3/87 (DATE) REQ. C.E. NO. 16847 (DATE)

SANTA CLARITA BLDG. DIST. 82

52411

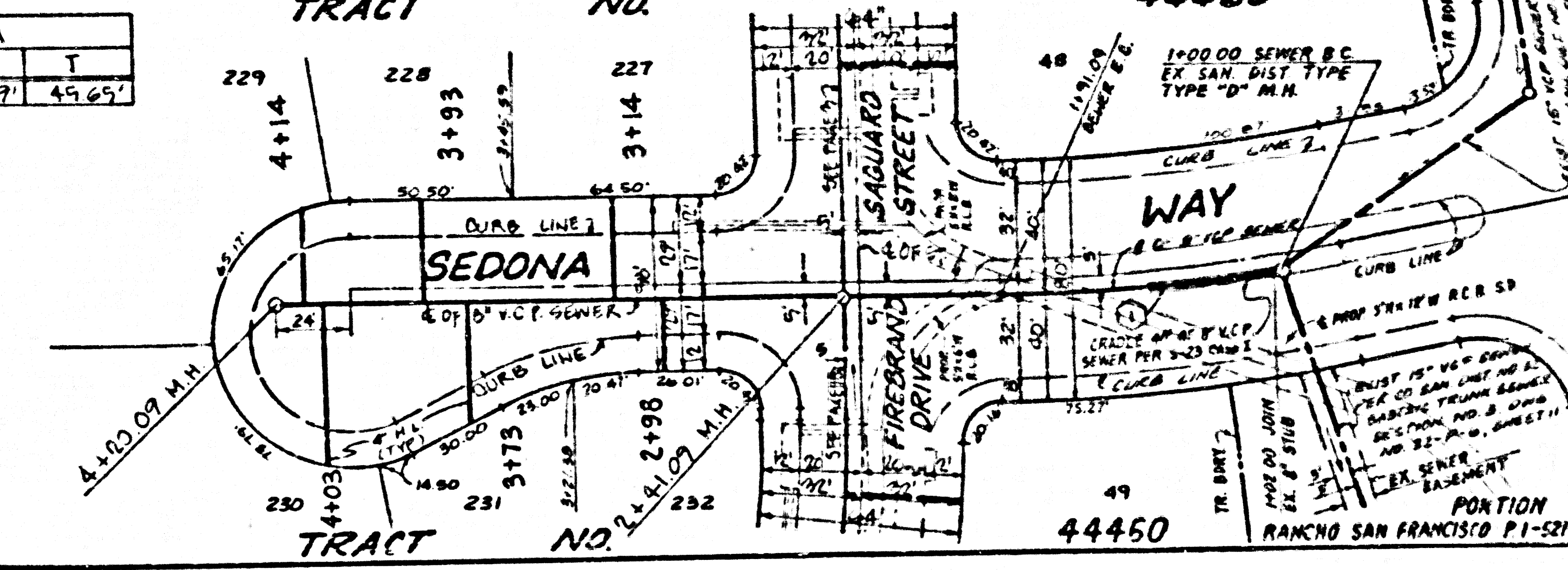
A301 BC 0344 SW ST

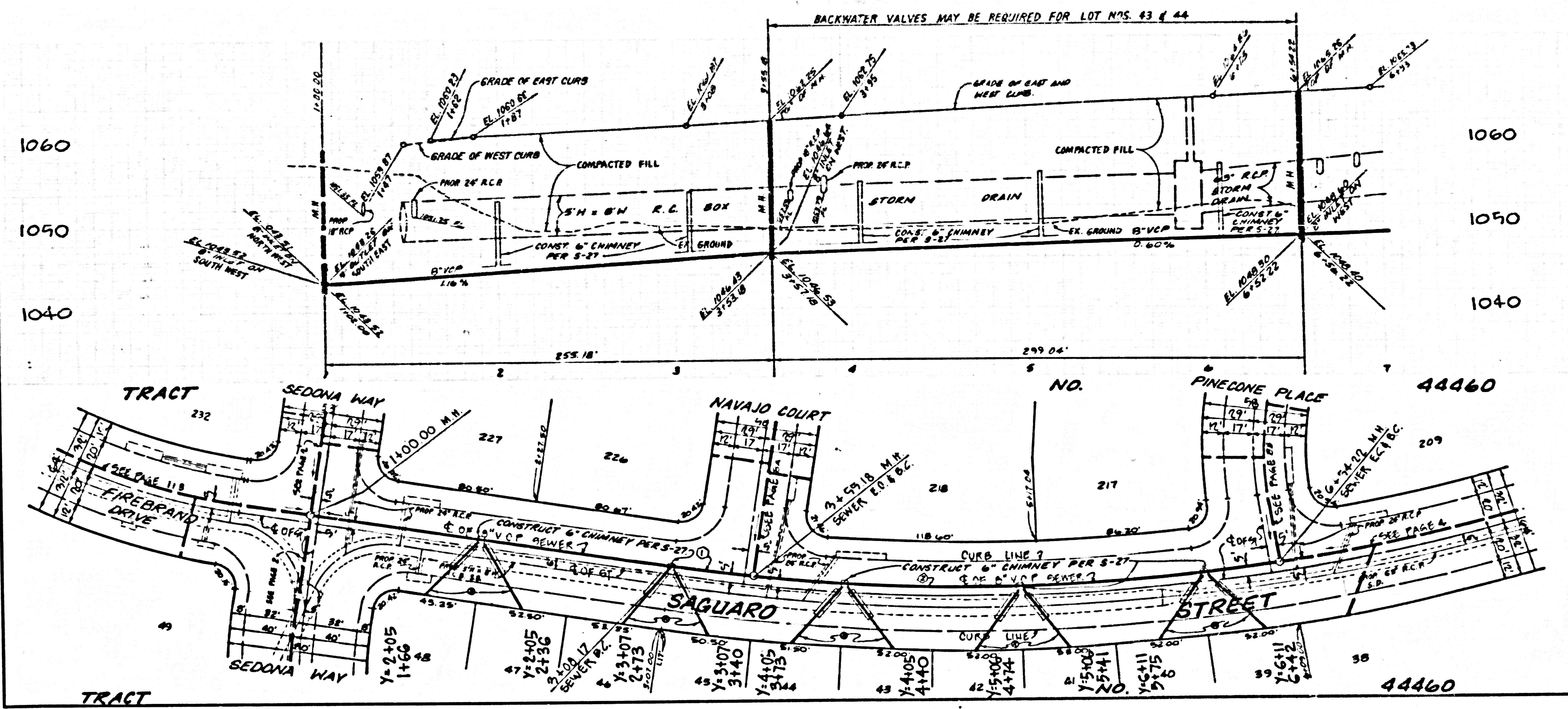


DOUBLE SCALE
NO L.A. COUNTY CHARGE FOR CONNECTION
SEE SAN. DISTRICTS FOR SPECIAL CONNECTION CHARGES

52412

SEWER CURVE DATA				
NO.	A	R	L	T
1	9° 49' 13"	55200'	91.09'	49.65'





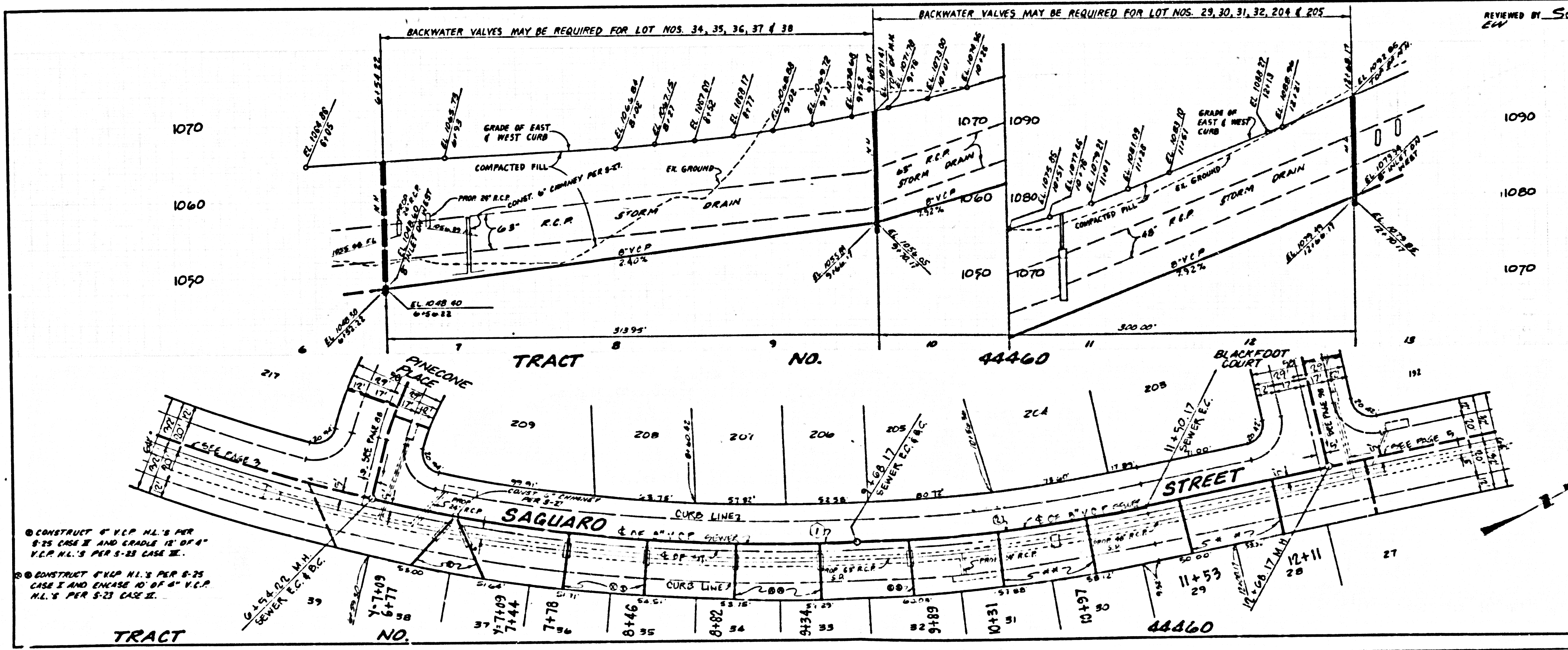
DOUBLE SCALE
 NO L.A. COUNTY CHARGE FOR CONNECTION
 SEE SAN. DISTRICTS FOR SPECIAL CONNECTION CHARGES

52413

SEWER CURVE DATA

NO.	A	R	L	T
1	2° 47' 30"	1099.00'	47.01'	29.91'
2	15° 08' 49"	1099.00'	299.04'	160.45'

CONSTRUCT 6" V.C.P. H.L.'S PER S-25 CASE II AND CRADLE 15" OF 4" R.C.P. H.L.'S PER S-25 CASE III.



DOUBLE SCALE
 NO L.A. COUNTY CHARGE FOR CONNECTION
 SEE SAN. DISTRICTS FOR SPECIAL CONNECTION CHARGES

52414

SEWER CURVE DATA

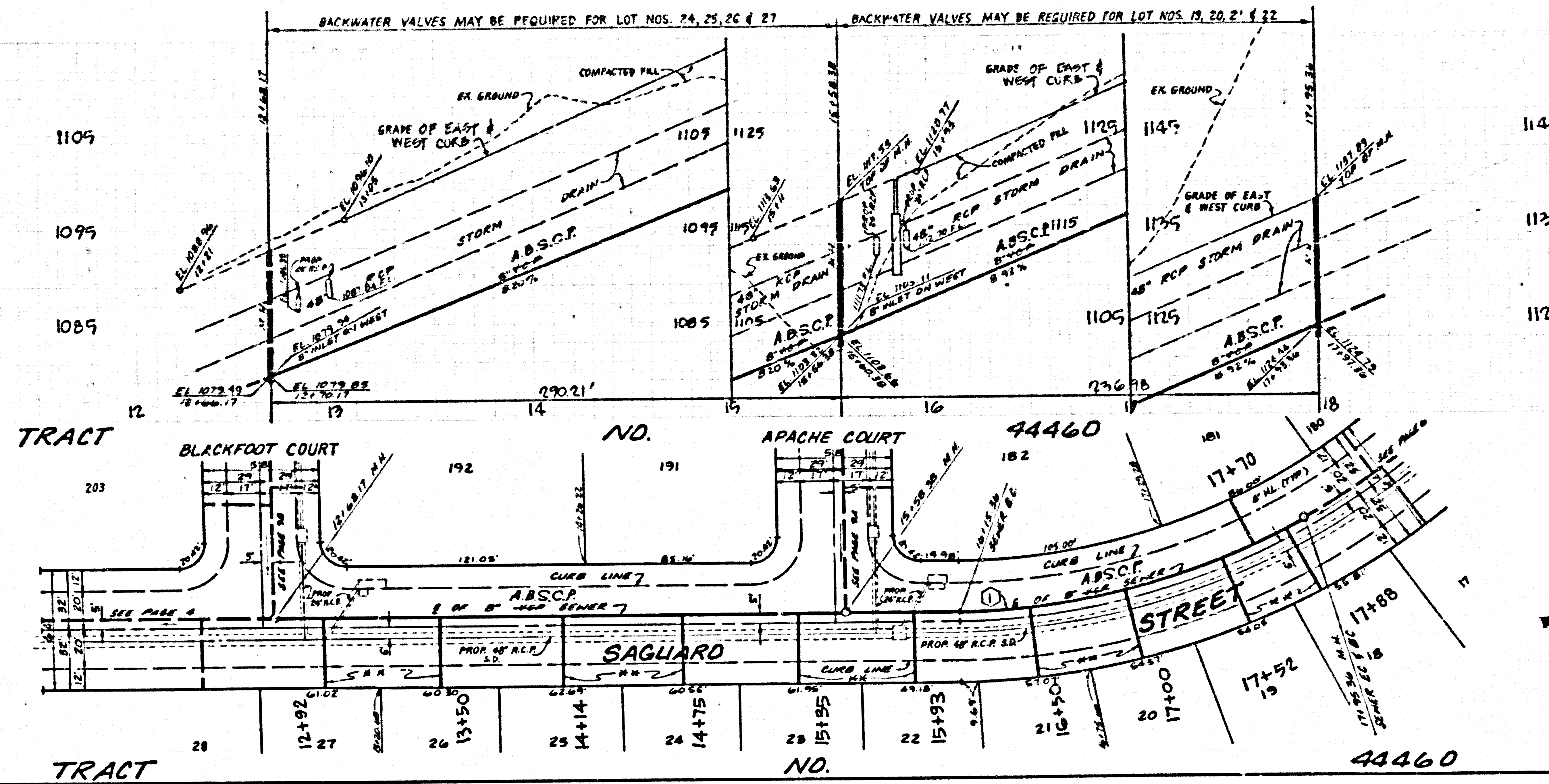
NO.	A	R	L	T
1	16° 47' 09"	1099.00'	71.95'	158.00'
2	9° 31' 43"	1099.00'	182.00'	91.21'

CONSTRUCT 6" V.C.P. H.L.'S PER S-25 CASE I.

15' NO 4440 65 1087

DOUBLE SCALE
NO L.A. COUNTY CHARGE FOR CONNECTION
SEE SAN. DISTRICTS FOR SPECIAL CONNECTION CHARGES

52415



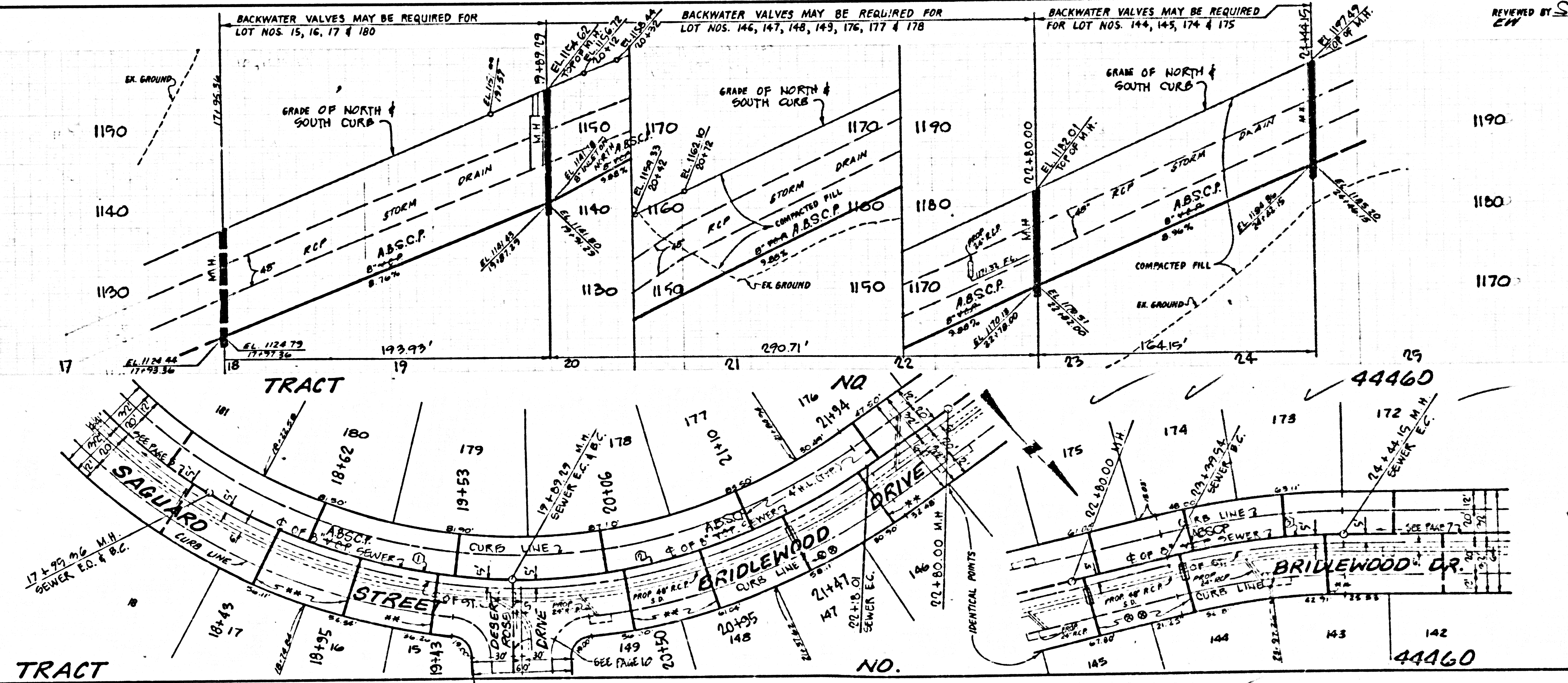
SEWER CURVE DATA

NO.	A	R	L	T
1	49° 49' 30"	345.00'	180.00'	92.10'

HA CONSTRUCT 4" VCP H.L.'S PER S-25 CASE I.

DOUBLE SCALE
NO L.A. COUNTY CHARGE FOR CONNECTION
SEE SAN. DISTRICTS FOR SPECIAL CONNECTION CHARGES

52416

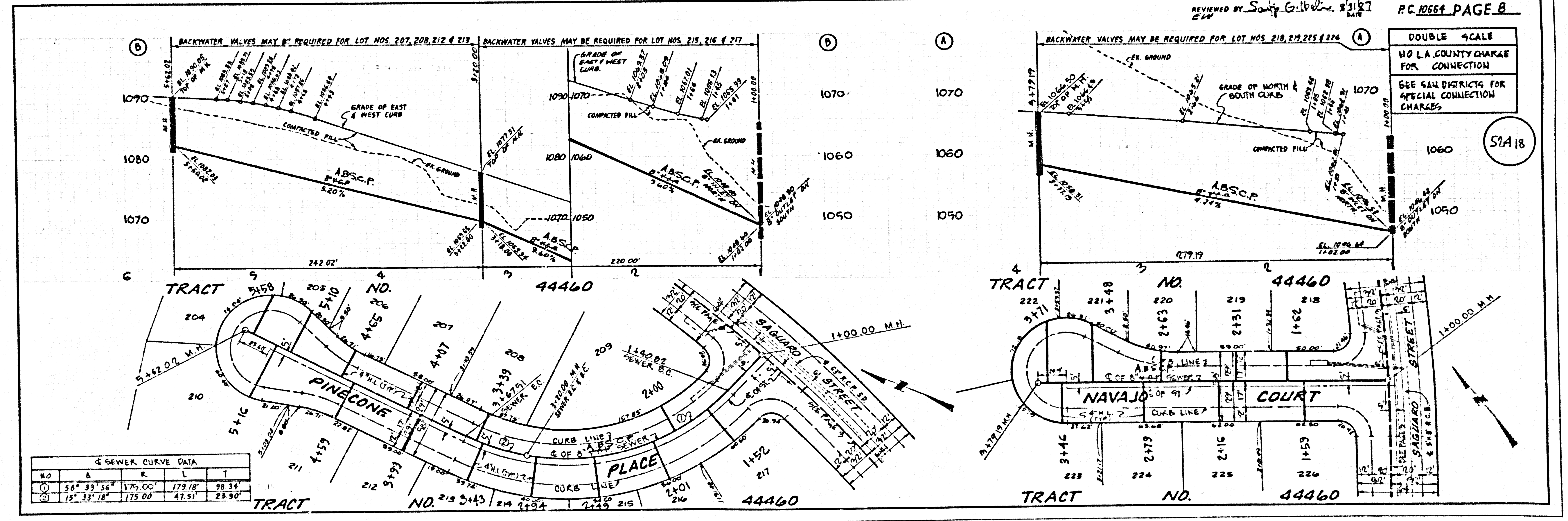
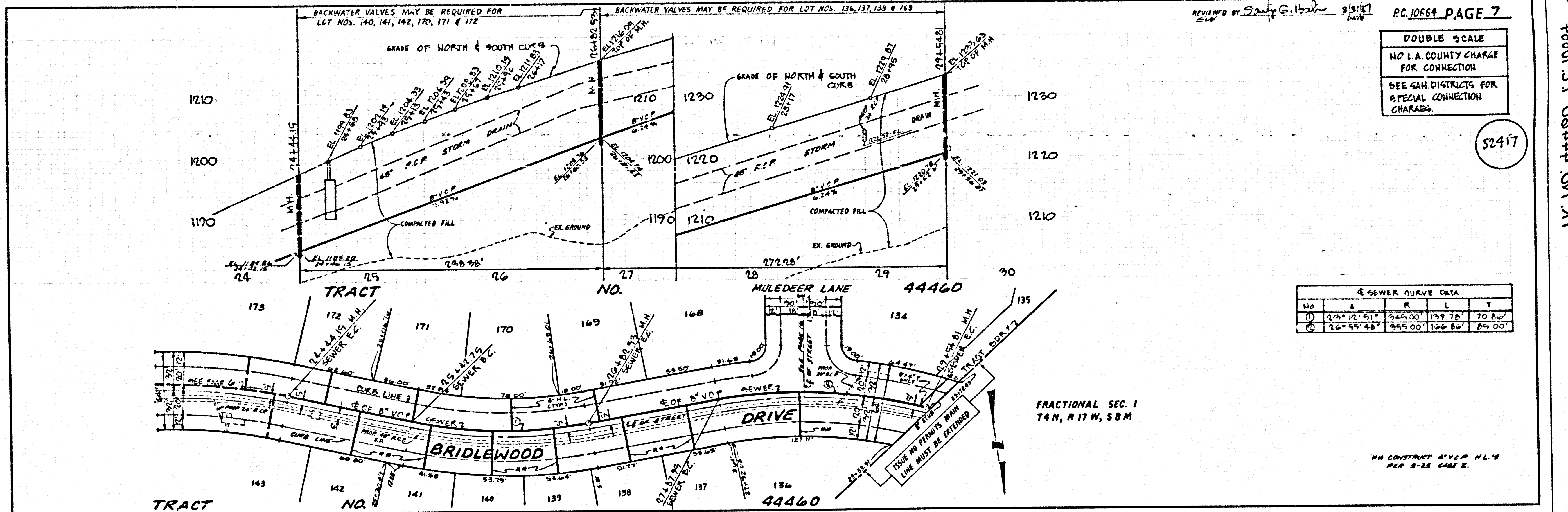


SEWER CURVE DATA

NO.	A	R	L	T
1	97° 12' 34"	345.00'	179.99'	99.50'
2	77° 59' 08"	345.00'	176.72'	118.74'
3	13° 42' 45"	479.00'	104.61'	58.56'

HA CONSTRUCT 4" VCP H.L.'S PER S-25 CASE I.
SB CONSTRUCT 4" VCP H.L.'S PER S-25 CASE I AND ENCASE 8" OF 4" VCP H.L.'S PER S-25 CASE II.

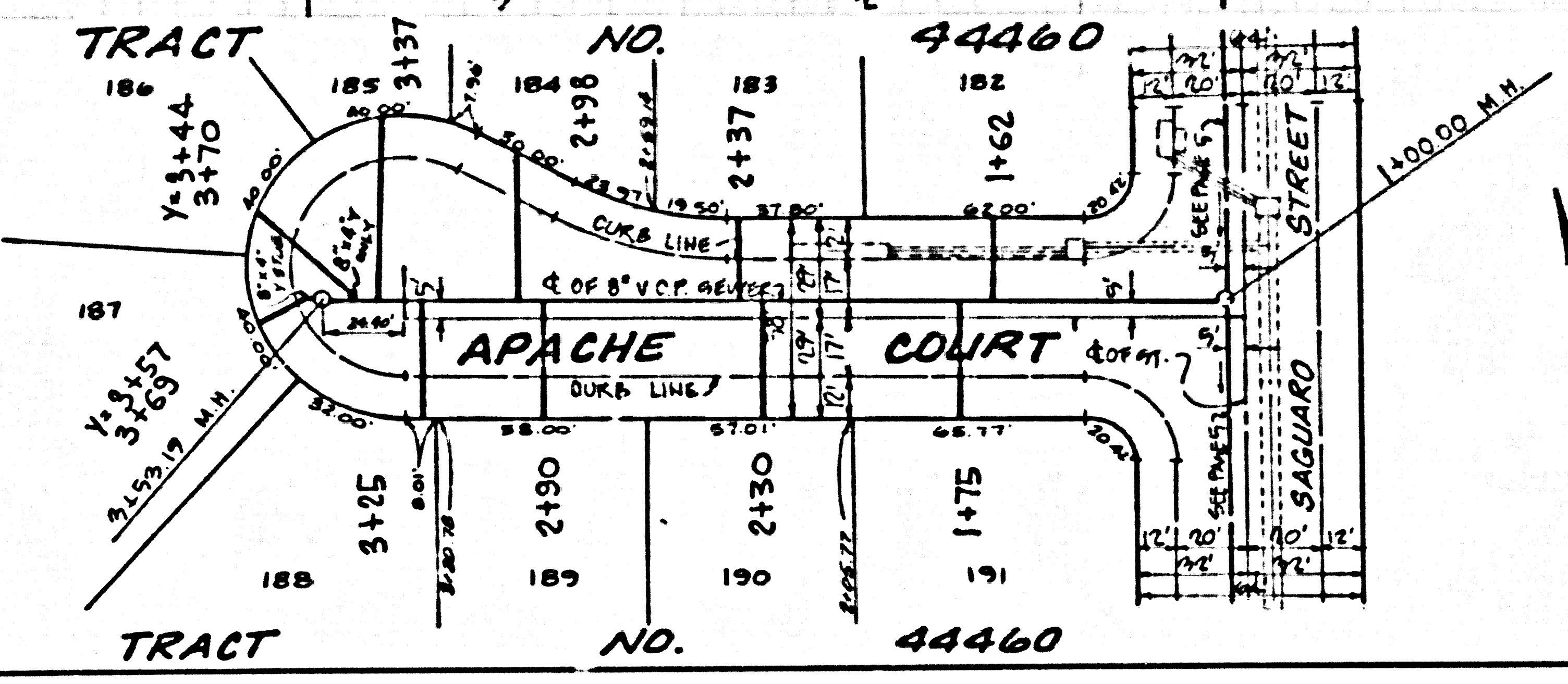
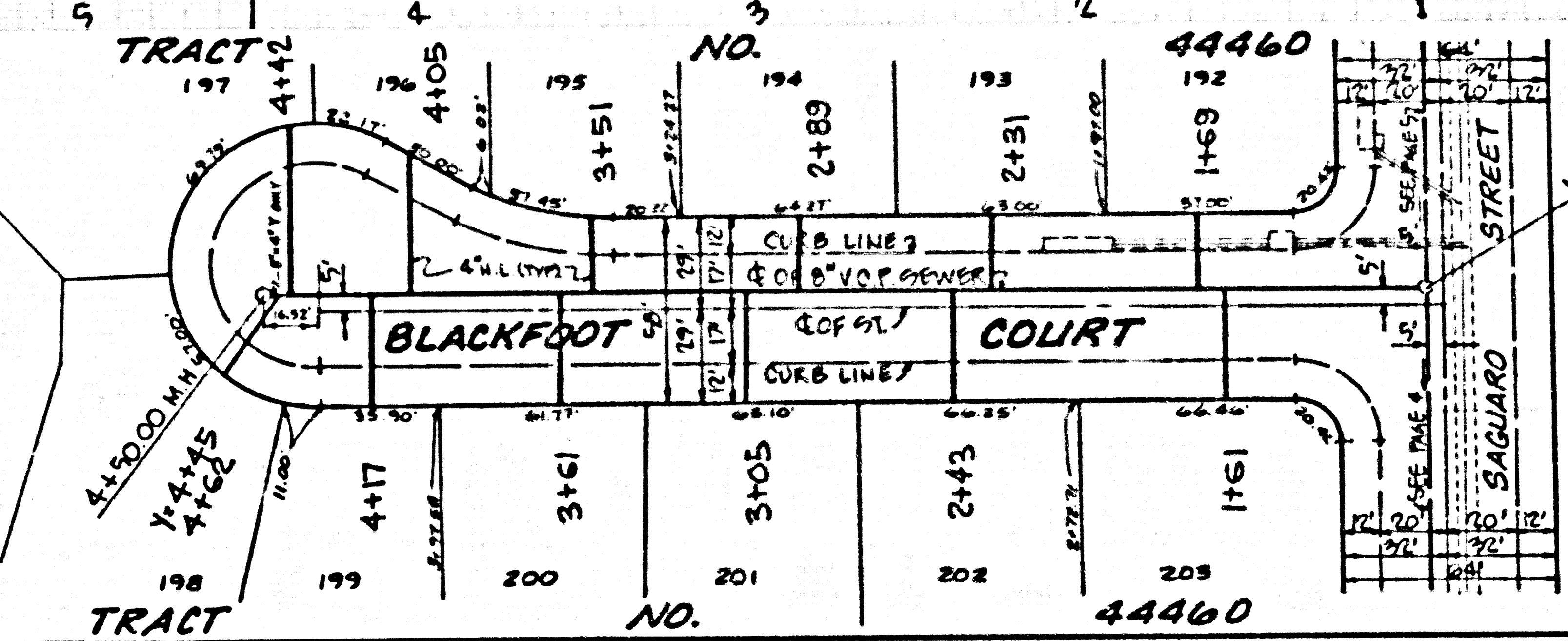
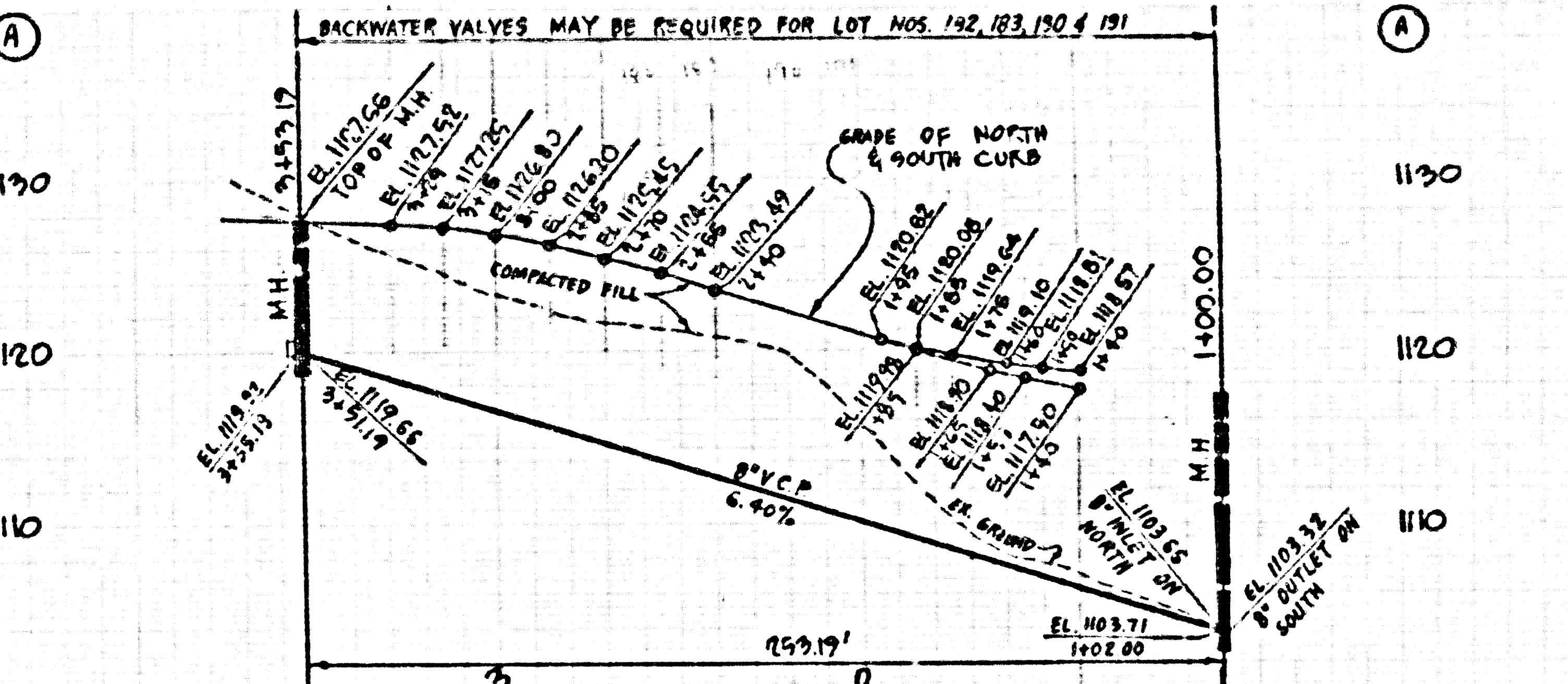
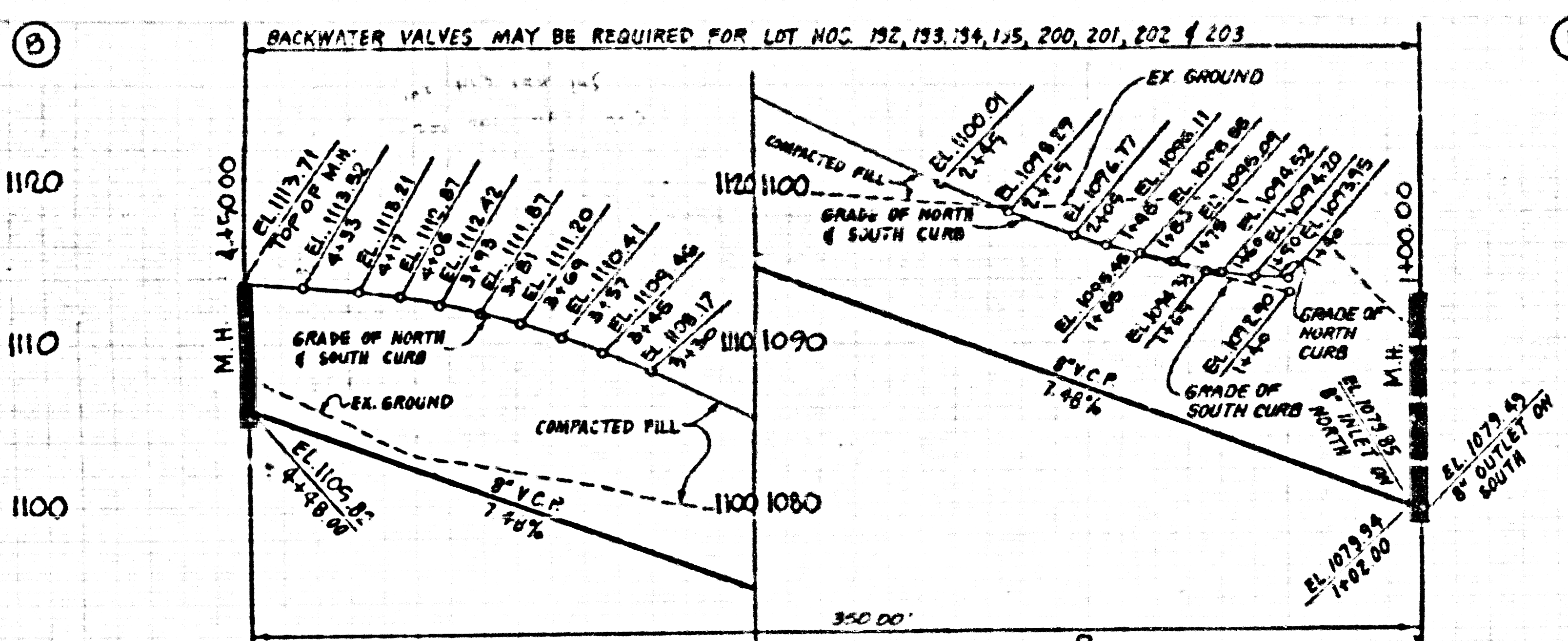
13801.59 08449 00 11



2801 59 08444 0A 5T

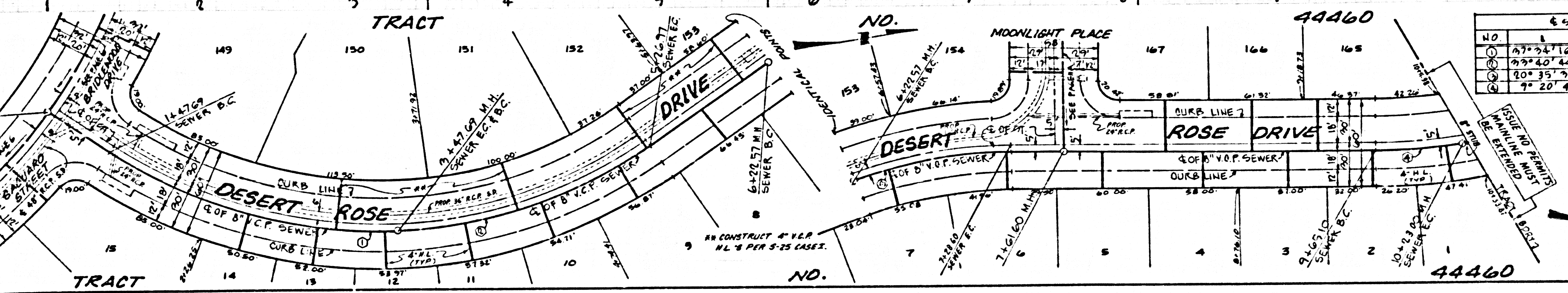
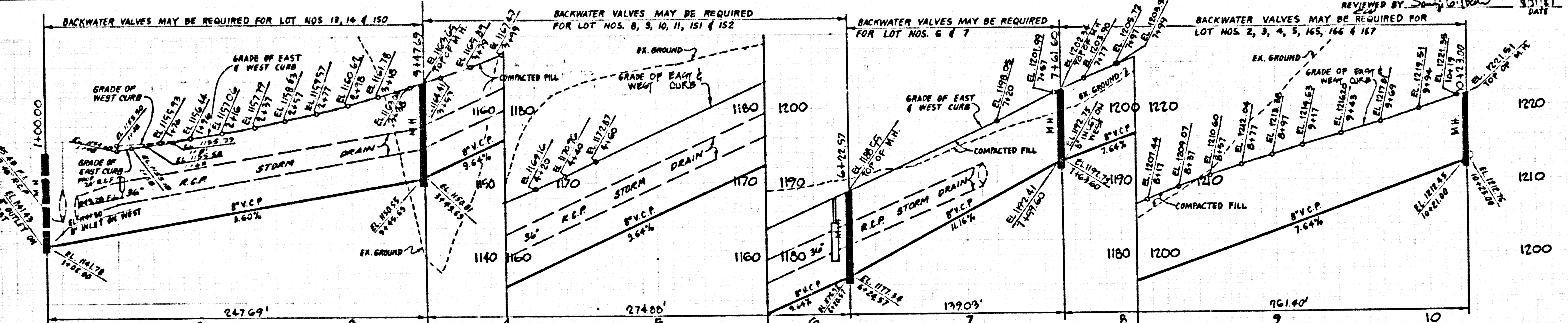
DOUBLE SCALE
 NO L.A. COUNTY CHARGE
 FOR CONNECTION
 SEE SAN. DISTRICTS FOR
 SPECIAL CONNECTION
 CHARGES

52419



DOUBLE SCALE
 NO L.A. COUNTY CHARGE
 FOR CONNECTION
 SEE SAN. DISTRICTS FOR
 SPECIAL CONNECTION
 CHARGES

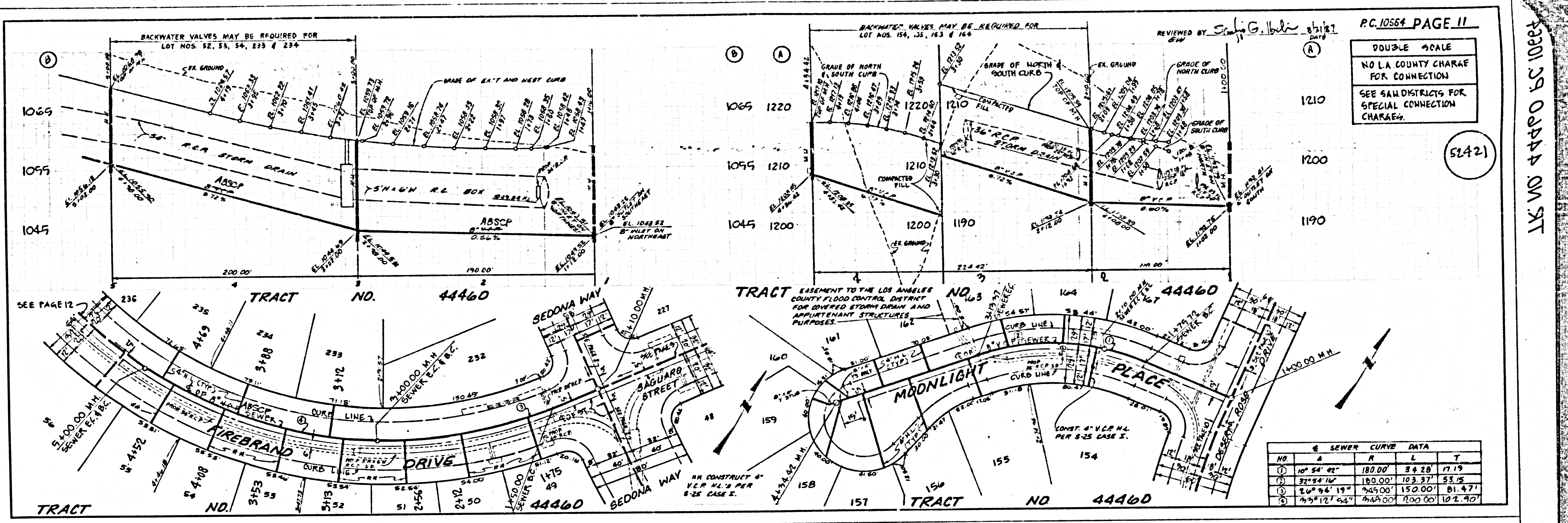
52420



SEWER CURVE DATA				
NO.	L	R	L	T
1	87° 24' 16"	709.00'	200.00'	109.74'
2	82° 40' 44"	709.00'	179.28'	92.71'
3	80° 33' 20"	795.00'	106.09'	53.59'
4	9° 20' 41"	795.00'	57.90'	29.01'

FRACTIONAL SEC. 1
 T4N, R17W, S8M

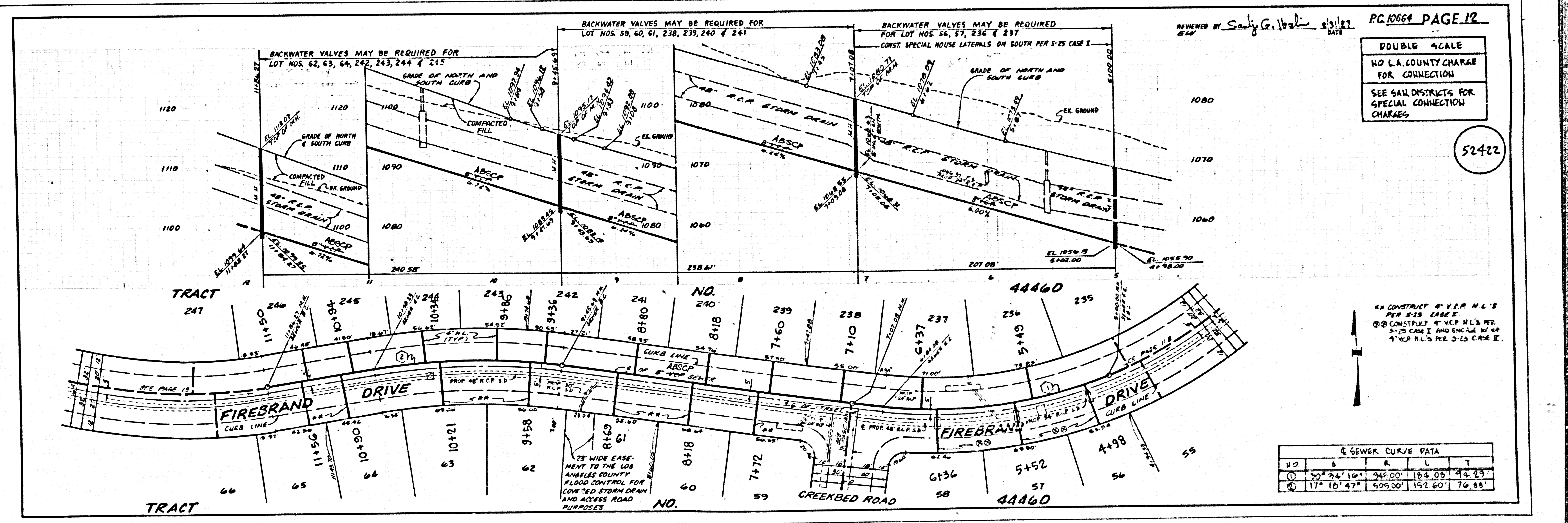
2
 43201 29 03448 05 10824



PC.10564 PAGE 11
 DOUBLE SCALE
 NO L.A. COUNTY CHARGE FOR CONNECTION
 SEE SAN DISTRICTS FOR SPECIAL CONNECTION CHARGES.

52421

SEWER CURVE DATA				
NO.	A	R	L	T
1	107° 54' 22"	180.00'	34.28'	17.19'
2	32° 54' 16"	180.00'	103.37'	53.15'
3	20° 36' 19"	245.00'	150.00'	81.47'
4	75° 12' 54"	245.00'	100.00'	102.90'

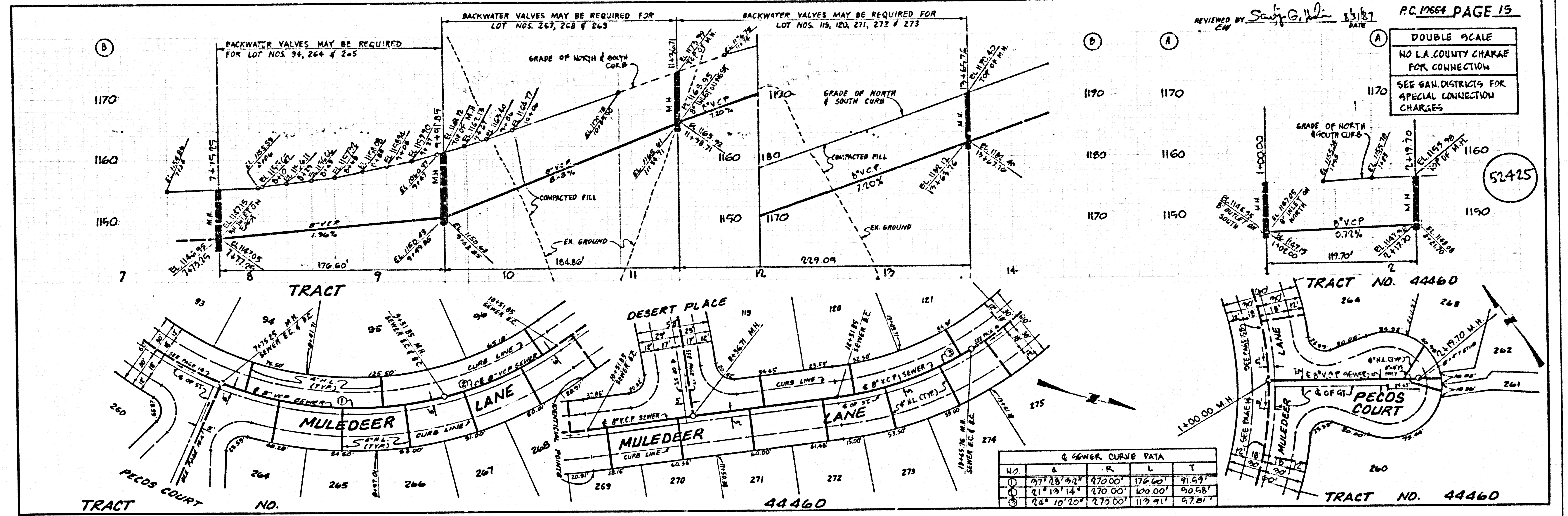


PC.10564 PAGE 12
 DOUBLE SCALE
 NO L.A. COUNTY CHARGE FOR CONNECTION
 SEE SAN DISTRICTS FOR SPECIAL CONNECTION CHARGES.

52422

SEWER CURVE DATA				
NO.	A	R	L	T
1	20° 24' 16"	245.00'	184.08'	92.23'
2	17° 16' 47"	509.00'	152.60'	76.88'

130109 0844 0M ST

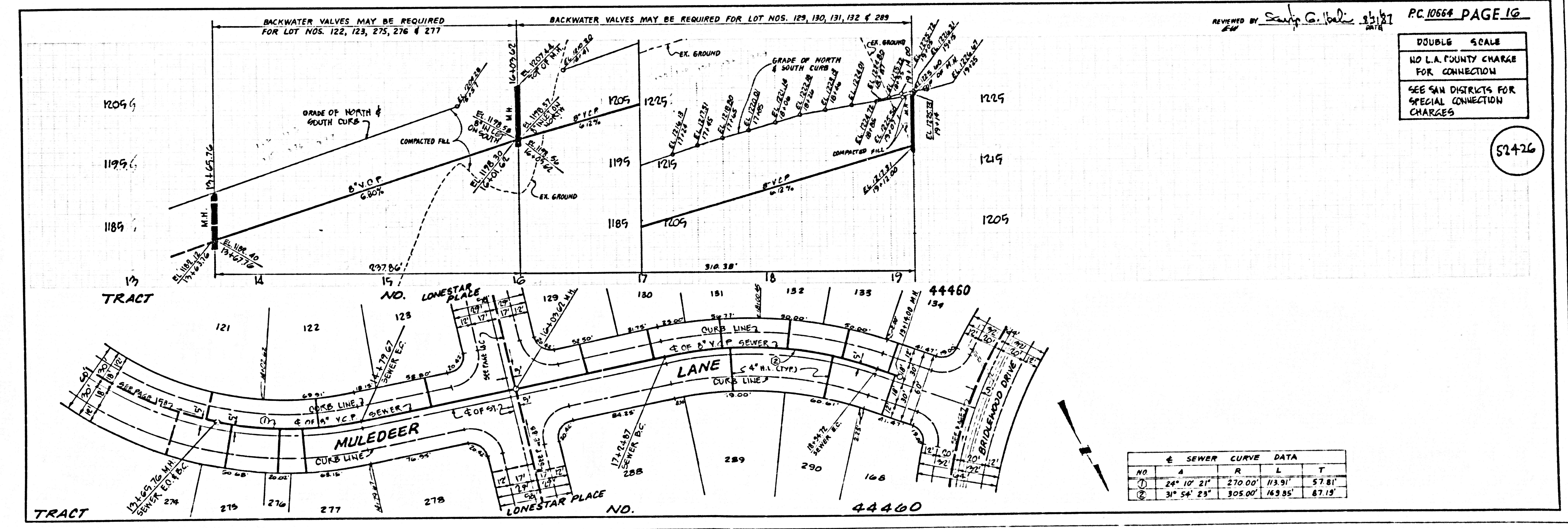


REVIEWED BY *Sauji G. Badi* 8/31/87 DATE

PC 17664 PAGE 15

DOUBLE SCALE
NO L.A. COUNTY CHARGE FOR CONNECTION
SEE SAN DISTRICTS FOR SPECIAL CONNECTION CHARGES

43801.59 03444.00 ST

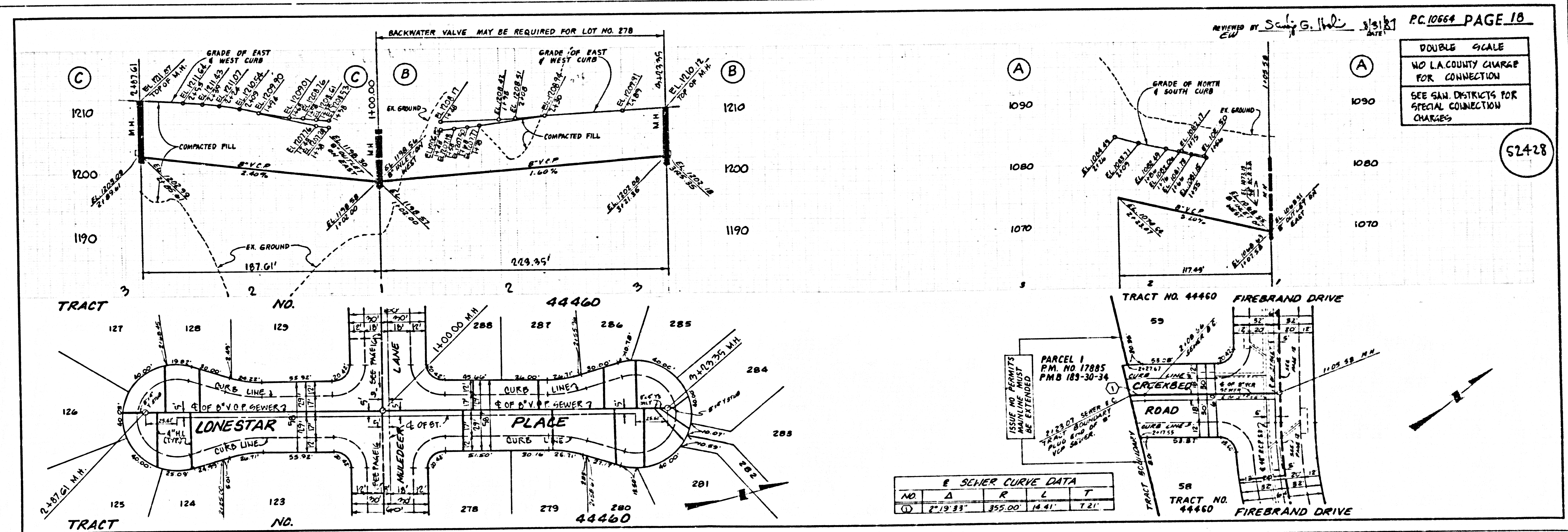
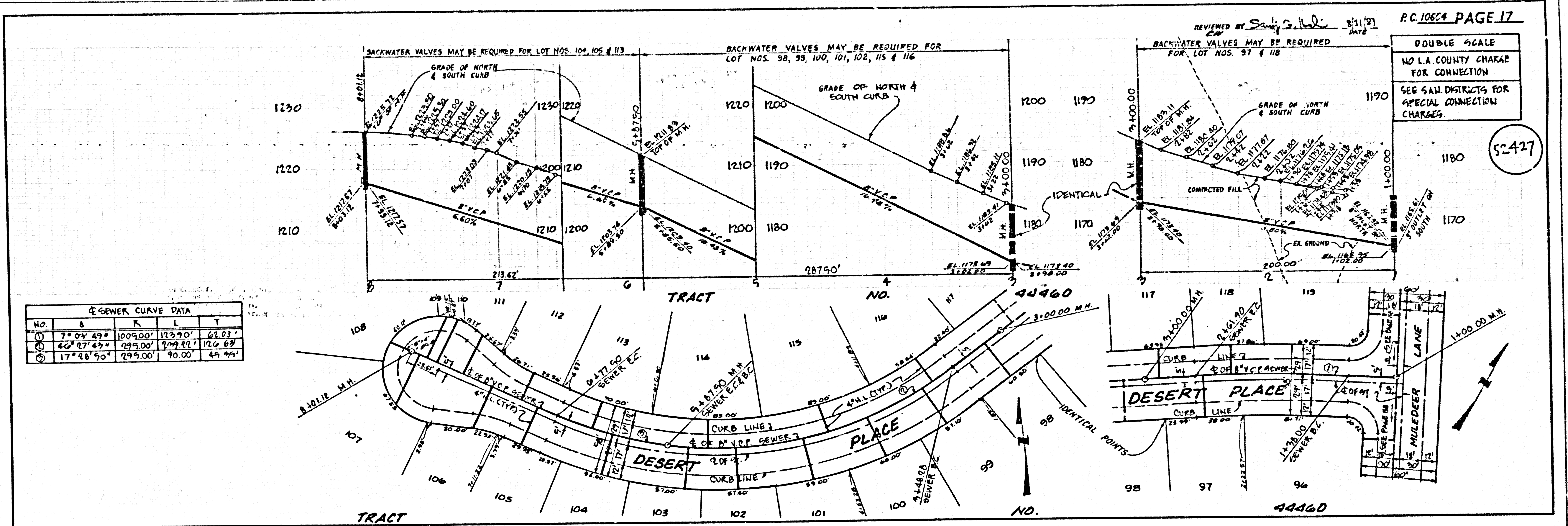


REVIEWED BY *Sauji G. Badi* 8/31/87 DATE

PC 10664 PAGE 16

DOUBLE SCALE
NO L.A. COUNTY CHARGE FOR CONNECTION
SEE SAN DISTRICTS FOR SPECIAL CONNECTION CHARGES

52426



18801 29 03444 04.517