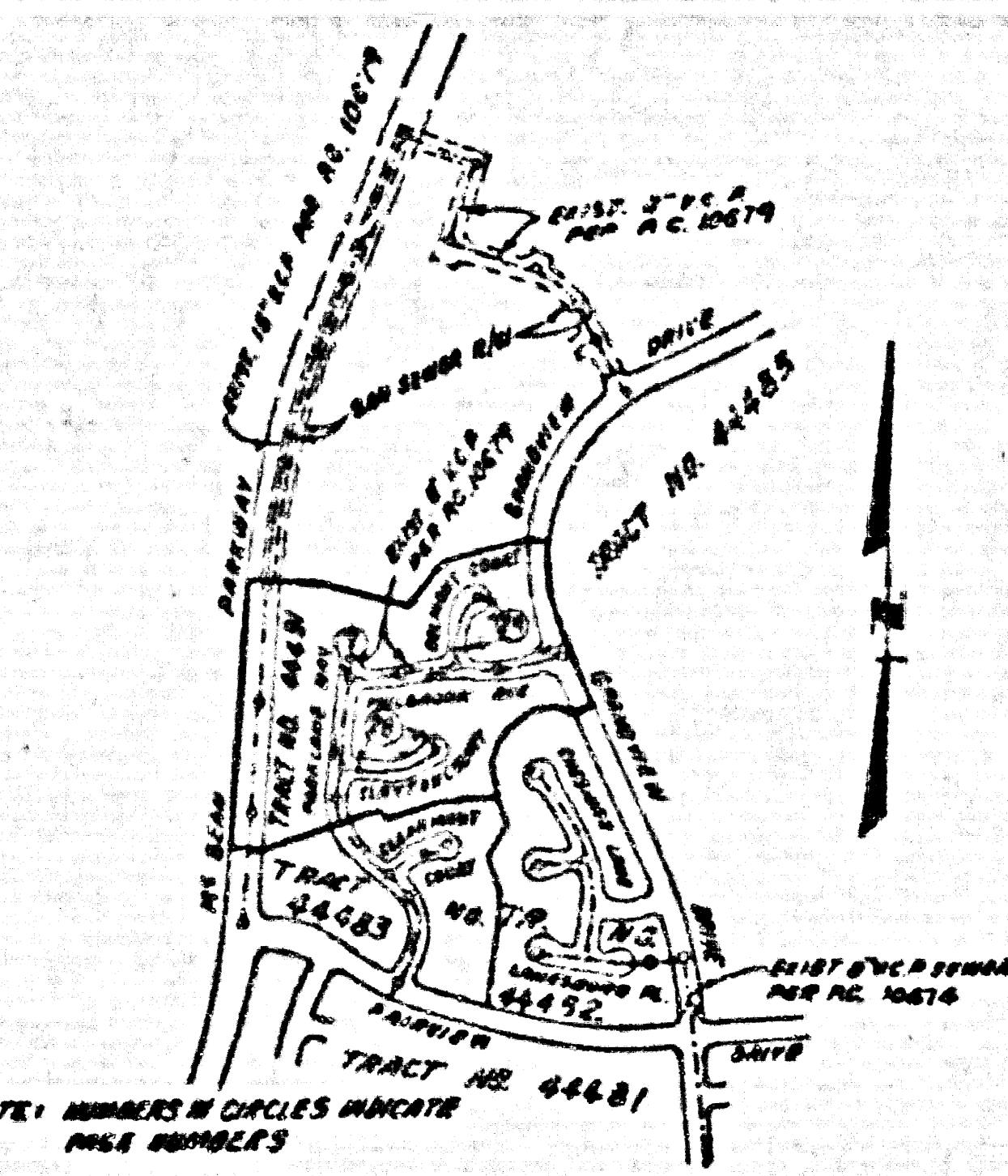


B.M. L.A.C.R.D. ELEV. 124.165 CL 1171
 U.S.C. 46 S. MOV. 12' 1/2" UP 35 FT. N. CL.
 3/4" CO. MET. PIPE 4' C.I. IN 2" DIA. H.L.
 W.E. INF. (S 370 1153 HERE 15.4)
 NEW HALL QUAD. 191383



INDEX MAP
 SCALE: 1" = 600'
 P.C. NO. 10678
 TRACT NO. 44491

NO CONNECTION FOR THE DISPOSAL OF INDUSTRIAL WASTES SHALL BE MADE TO SEWERS SHOWN ON THESE DRAWINGS UNTIL A PERMIT FOR INDUSTRIAL WASTEWATER DISCHARGE HAS BEEN ISSUED BY THE SANITATION DISTRICTS FOR SAID CONNECTION

BEFORE BREAKING INTO OR CONSTRUCTION ON A COUNTY SANITATION DISTRICT SEWER AND PRIOR TO FINAL ACCEPTANCE OF THE PROJECT, SANITATION DISTRICT INSPECTOR SHALL BE NOTIFIED BY PHONE (518) 961-8605 SO THAT REQUIRED INSPECTION CAN BE MADE.

LOTS 49, 56, 57 AND 58 ARE OPEN SPACE LOTS. RESTRICTED TO NO CONSTRUCTION AND WILL NOT BE SERVED BY THIS SEWER

LOTS 1 TO 20, 29 TO 45, 54 AND 55 WILL BE SERVED BY SEWER SYSTEM FOR P.C. 10678

ISSUE NO HOUSE LATERAL PERMITS UNTIL OUTLET P.C. 10678 IS ACCEPTED FOR PUBLIC USE BY THE COUNTY OF LOS ANGELES

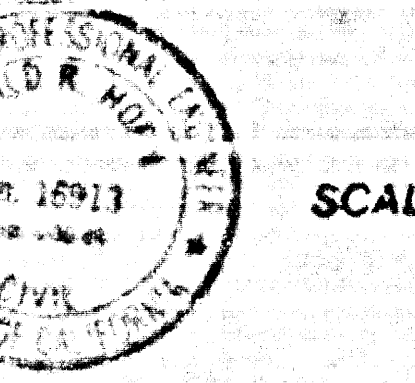
GENERAL NOTES:

- ELEVATIONS ARE IN FEET ABOVE U.S.C. & G.S. SEA LEVEL DATUM OF 1929
- NO REVISIONS SHALL BE MADE IN THESE PLANS WITHOUT THE APPROVAL OF THE ENGINEER OF PUBLIC WORKS
- NO REARRANGING OF THE DEPARTMENT OF PUBLIC WORKS WILL SUPPLY OR LAY OUT ANY PORTION OF THE WORK
- CONTRACTOR TO VERIFY THAT ALL SEWER LINES ARE PROTECTED BY PLASTER OR PLASTER AND PROTECT THEM FROM TOP OF CURB TO BOTTOM OF CURB BY CONCRETE OR OTHER MATERIALS TO BE CONSTRUCTED IN ACCORDANCE WITH THE SPECIFICATIONS FOR THE WORK
- THE PRIVATE PROPERTY OWNER SHALL FURNISH THE DEPARTMENT OF PUBLIC WORKS WITH A PERMIT TO EXCAVATE FOR ALL HOUSE LATERALS AND TO EXCAVATE AND SHALL PROTECT THEM AT ALL TIMES FROM THE POINT OF CONNECTION WITH THE PUBLIC MAINLINE PLUMBING AS SHOWN ON THE PLANS HOUSE LATERALS SHALL BE CONSTRUCTED IN A STRAIGHT LINE FROM THE HOUSE TO THE MAINLINE PLUMBING AND CHANGE IN ALIGNMENT SHALL BE APPROVED BY THE PRIVATE ENGINEER
- THE PRIVATE ENGINEER SHALL FURNISH THE HOUSE LATERAL DEPTH AT THE POINT OF CONNECTION WITH THE MAINLINE PLUMBING FOR EACH HOUSE LATERAL ON THE GRADE SHEET
- IF A HOUSE LATERAL IS TO BE CONSTRUCTED IN A STRAIGHT LINE FROM THE HOUSE TO THE MAINLINE PLUMBING THE CONTRACTOR SHALL FURNISH THE DEPARTMENT OF PUBLIC WORKS WITH A PERMIT TO EXCAVATE FOR THE HOUSE LATERAL AND SHALL PROTECT THEM AT ALL TIMES FROM THE POINT OF CONNECTION WITH THE PUBLIC MAINLINE PLUMBING AS SHOWN ON THE PLANS HOUSE LATERALS SHALL BE CONSTRUCTED IN A STRAIGHT LINE FROM THE HOUSE TO THE MAINLINE PLUMBING AND CHANGE IN ALIGNMENT SHALL BE APPROVED BY THE PRIVATE ENGINEER
- IF A HOUSE LATERAL IS TO BE CONSTRUCTED IN A STRAIGHT LINE FROM THE HOUSE TO THE MAINLINE PLUMBING THE CONTRACTOR SHALL FURNISH THE DEPARTMENT OF PUBLIC WORKS WITH A PERMIT TO EXCAVATE FOR THE HOUSE LATERAL AND SHALL PROTECT THEM AT ALL TIMES FROM THE POINT OF CONNECTION WITH THE PUBLIC MAINLINE PLUMBING AS SHOWN ON THE PLANS HOUSE LATERALS SHALL BE CONSTRUCTED IN A STRAIGHT LINE FROM THE HOUSE TO THE MAINLINE PLUMBING AND CHANGE IN ALIGNMENT SHALL BE APPROVED BY THE PRIVATE ENGINEER
- IF A HOUSE LATERAL IS TO BE CONSTRUCTED IN A STRAIGHT LINE FROM THE HOUSE TO THE MAINLINE PLUMBING THE CONTRACTOR SHALL FURNISH THE DEPARTMENT OF PUBLIC WORKS WITH A PERMIT TO EXCAVATE FOR THE HOUSE LATERAL AND SHALL PROTECT THEM AT ALL TIMES FROM THE POINT OF CONNECTION WITH THE PUBLIC MAINLINE PLUMBING AS SHOWN ON THE PLANS HOUSE LATERALS SHALL BE CONSTRUCTED IN A STRAIGHT LINE FROM THE HOUSE TO THE MAINLINE PLUMBING AND CHANGE IN ALIGNMENT SHALL BE APPROVED BY THE PRIVATE ENGINEER

CONSTRUCTION NOTES:

- WORK SHALL BE CONSTRUCTED ACCORDING TO THE STANDARD SPECIFICATIONS FOR PUBLIC WORKS CONSTRUCTION WITH THE EXCEPTION OF THE SPECIFICATIONS FOR PUBLIC WORKS SPECIAL PROVISIONS FOR THE COUNTY OF LOS ANGELES AS SET FORTH IN THE SPECIFICATIONS FOR PUBLIC WORKS SPECIAL PROVISIONS FOR THE COUNTY OF LOS ANGELES
- THE CONTRACTOR SHALL NOTIFY THE CONSTRUCTION DIVISION BY TELEPHONE (518) 961-3129, AT LEAST TWENTY FOUR HOURS BEFORE STARTING ANY WORK UNDER THIS CONTRACT
- HOUSE LATERALS TO BE CONSTRUCTED WITH INVERTS AT PROPERTY LINE & FEET BELOW CURB GRADE EXCEPT AS NOTED
- IF ON THE MAINLINE SEWER CONNECTIONS TO MAINLINE SEWER EXCEPT AS NOTED
- ALL STRUCTURES SHALL BE EITHER BRICK MANHOLE PERIOD OR PRECAST CONCRETE MANHOLE PERIOD AS NOTED
- PROTECT STAKES ON THE PROPERTY LINE OR PROPERTY LINES PRODUCED AT RIGHT ANGLES TO THE SEWER LINE AT THE CENTER LINE OF EACH MANHOLE
- MANHOLE TOPS ON UNIMPROVED RIGHTS OF WAY TO BE SIX INCHES ABOVE FINISHED GRADE
- STREETED CLAY PIPE JOINTS SHALL BE TYPE "D" OR "E" PER STANDARD SPECIFICATIONS SECTION 208-2
- IF A POWER POLE IS WITHIN THREE FEET OF THE SEWER THE SEWER SHALL BE ENCASED PER CASE 1 TWO FEET FOR EACH SIDE FROM THE POINT OF INTERFERENCE
- IF DURING THE COURSE OF CONSTRUCTION IT IS DETERMINED THAT THERE IS LESS THAN FOUR FEET OF COVER FOR THE TOP OF A 18" OR 24" HOUSE LATERAL, 12" P. PIPE WHICH IS NOT INDICATED ON THE PLANS, THE PIPE SHALL BE ENCASED PER CASE 1 UNLESS OTHERWISE APPROVED BY THE DIRECTOR OF PUBLIC WORKS
- ALL JOINTS IN HOUSE LATERALS AND STRENGTHENED CLAY PIPE SHALL BE MADE WITH A RUBBER SLEEVE JOINT TYPE "C" OR "D" WITH GASKETS IF NECESSARY PER STANDARD SPECIFICATIONS SECTION 208-2
- SEWERS TO BE BUILT FOR LEAKAGE PER SECTION 208-1.3 OF THE STANDARD SPECIFICATIONS AND SPECIAL PROVISIONS
- REINFORCE ALL TRENCHES WITHIN PAVED AREAS TO MEET LOS ANGELES COUNTY PUBLIC WORKS OF CALIFORNIA STATE HIGHWAY REQUIREMENTS IN ACCORDANCE WITH PERMITS
- ALL COMPLIANCE WITH SECTION 208-1.3 OF THE STANDARD SPECIFICATIONS SHALL BE PROVIDED FOR EACH LOT IN STREETS CERTIFICATION OF EACH LOT CONNECTION AND SAID COMPLIANCE BY A QUALIFIED REGISTERED TESTING LABORATORY SHALL BE PROVIDED BY THE CONTRACTOR PRIOR TO THE SUBMITTAL OF A CERTIFICATE OF FINISHING ACCEPTANCE
- SPECIAL SPECIALTY MATERIALS OR METHODS OF CONSTRUCTION OR BACKFILL WHICH ARE NOT SPECIFIED IN THE STANDARD SPECIFICATIONS SHALL BE APPROVED BY THE ENGINEER OF PUBLIC WORKS AND SHALL BE SHOWN ON THE GRADING PLAN APPROVED FOR THIS OR DEVELOPED BY THE ENGINEER OF PUBLIC WORKS DIVISION (IN ALL BACKFILL AND EARTH REPAIRS SHALL BE COMPACTED TO A MINIMUM OF 90% OF MAXIMUM DRY WEIGHT PER UNIT VOLUME METHOD OF TEST OR BY A MODIFIED ACCORDABLE COMPACTION OF EACH CONNECTION SHALL BE SUBMITTED TO THE CONSTRUCTION DIVISION, DEPT. OF PUBLIC WORKS

A-70
 TRACT NO. 44491
PRIVATE CONTRACT NO. 10576
 W.S.
 1 SHEET OF 2 PAGES



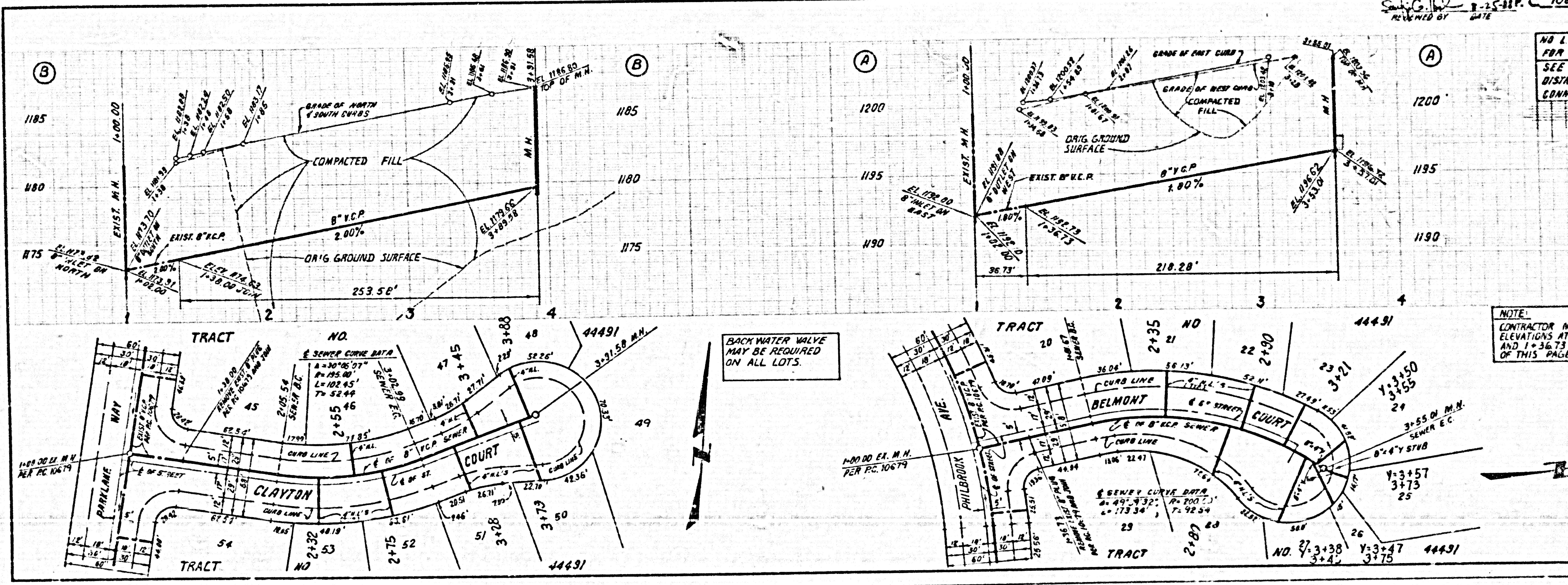
SCALE: VERT. 1" = 6'
 HORIZ. 1" = 60'
 APRIL, 1987

PREPARED IN THE OFFICES OF
 DONALD L. HAN
 REG. C.E. NO. 12513
 EXP. DATE: 6-30-89

THE FOLLOWING LATEST REVISIONS TO STANDARD PLANS ON FILE IN THE OFFICE OF THE DEPARTMENT OF PUBLIC WORKS SHALL APPLY TO THE CONSTRUCTION OF THIS PROJECT

LEAKAGE	0-1
MINIMUM PUBLIC SAFETY REQUIREMENTS	0-2
BRICK MANHOLE	0-3
STANDARD MANHOLE STEP	0-17
REINFORCING FOR SEWER PIPE	0-21
CRACK AND ANNEALING	0-22
WEED OR WEED SUPPORT	0-23
ALLOWABLE TRENCH WIDTH	0-24
LOCKING A MANHOLE FRAME AND COVER	0-28
NON-REINFORCED PRECAST CONCRETE MANHOLE	0-28

COUNTY OF LOS ANGELES, CALIFORNIA
 THOMAS A. TIDEMANSON
 DIRECTOR OF PUBLIC WORKS
 APPROVED: [Signature] DATE: [Date]
 CHARLES W. CARRY
 CHIEF ENGINEER
 CO. SIGNATURE NO. [Number]
 CHECKED: [Signature] DATE: [Date]
 REG. C.E. NO. 12,116
 SANTA CLARITA VALLEY BLDG. DIST. 82



85301 BC 10576 19444 ON 10678

52683

NOTE:
 CONTRACTOR MUST VERIFY INVERT ELEVATIONS AT STATIONS 1+38.00 AND 1+36.73 PRIOR TO CONSTRUCTION OF THIS PAGE

BACKWATER VALVE MAY BE REQUIRED ON ALL LOTS.