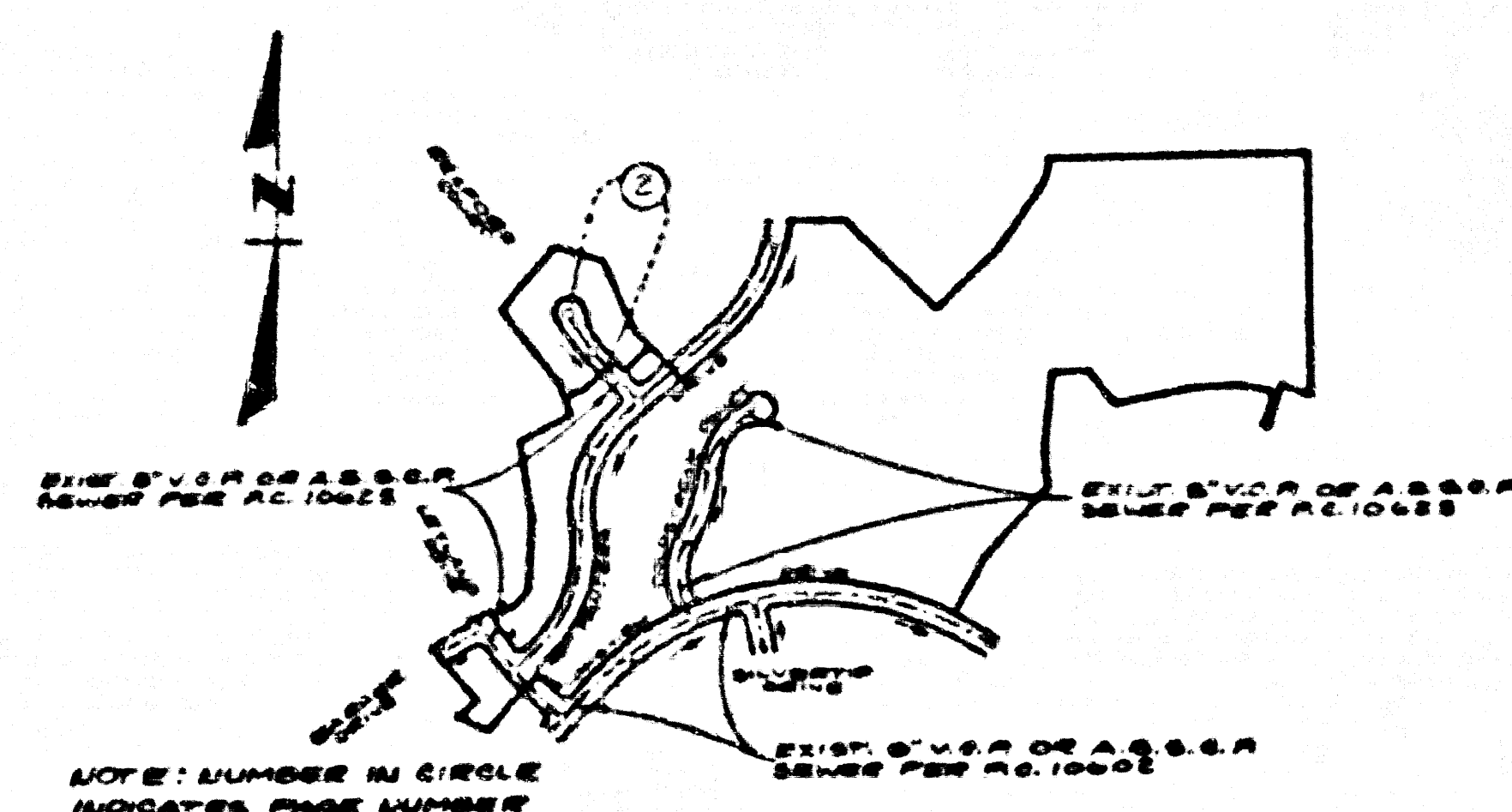


B.M. C.G. 3911 ELEV. 895.556
 L & T W. E. END C9 44 FT. S & 96 FT.
 W. CAL. INT. GRAND AVE. & DIAMOND BAR
 BLVD. M.H.D. S.M. C-12
 QUITTERBEIN QUAD. 1975.



INDEX MAP
 TRACT NO. 45380
 P.C. 10600
 SCALE: 1"=600'

PRIVATE ENGINEER'S NOTICE TO CONTRACTORS
 THE EXISTENCE AND LOCATION OF ANY UNDERGROUND UTILITY PIPES OR STRUCTURES SHOWN ON THE SEWER PLANS ARE OBTAINED BY A SEARCH OF THE AVAILABLE RECORDS TO THE BEST OF OUR KNOWLEDGE. THERE ARE NO KNOWN UTILITIES EXCEPT AS SHOWN ON THESE PLANS. THE CONTRACTOR IS ADVISED TO TAKE CARE IN CONSTRUCTION TO PROTECT THE UTILITY LINES SHOWN AND ANY OTHER LINES NOT RECORDED OR NOT SHOWN ON THESE PLANS. THE CONTRACTOR SHALL BE RESPONSIBLE FOR NOTIFYING UNDERGROUND SERVICE ALERT AT 1-800-475-7829 TWO WORKING DAYS PRIOR TO ANY EXCAVATION OR CONSTRUCTION.

CONSTRUCTION NOTES CONT.
 16. FULL COMPLIANCE WITH PART 10 OF THE SPECIAL PROVISIONS IS REQUIRED FOR THE INSTALLATION OF A 8" S.C.P. COMPOSITE PIPE.
 17. MANHOLE WATER STOP GASKETS AND CLAMPS ARE REQUIRED FOR THE CONNECTION OF A 8" S.C.P. COMPOSITE PIPE TO MANHOLE STRUCTURES.
 18. A 8" S.C.P. COMPOSITE PIPE SHALL BE USED FOR VIVE AND HOUSE LATERAL CONNECTIONS TO A 8" S.C.P. COMPOSITE MAINLINE SEWER PIPE.
 19. A 8" S.C.P. COMPOSITE PIPE SHALL BE SECCED IN CONFORMANCE WITH THE TABLE IN SECTION 8.0.1 OF PART 10 OF THE SPECIAL PROVISIONS.
 20. THREE DEGREE DEFLECTION COUPLERS ARE REQUIRED FOR RADIUS OF CURVATURE LESS THAN 200 FEET WHEN USING A 8" S.C.P. COMPOSITE PIPE.
 21. NO CONNECTIONS FOR DISPOSAL OF INDUSTRIAL WASTE IS ALLOWED IF A 8" S.C.P. COMPOSITE PIPE IS USED.
 22. SEWER LINE CURVATURE SHALL NOT BE ACHIEVED BY PULLING OF JOINTS OR BENDING PIPE ENDS WHEN USING PLASTIC PIPE INCLUDING A 8" S.C.P. COMPOSITE PIPE.
 23. ALL VIVE AND HOUSE LATERALS ARE TO BE LOCATED AT LEAST ONE FOOT AWAY AND WHEN POSSIBLE NOT CLOSER THAN ONE FOOT TO ANY MANHOLE.
 24. A 8" S.C.P. COMPOSITE PIPE IS NOT ACCEPTABLE FOR USE AS MAINLINE SEWER.
 25. ONLY VIVE BRANCHES ARE TO BE USED FOR CONNECTION TO A 8" S.C.P. COMPOSITE MAINLINE SEWER PIPE.

NO CONNECTION FOR THE DISPOSAL OF INDUSTRIAL WASTES SHALL BE MADE TO SEWERS SHOWN ON THESE DRAWINGS UNTIL A PERMIT FOR INDUSTRIAL WASTEWATER DISCHARGE HAS BEEN ISSUED BY THE SANITATION DISTRICTS FOR SAID CONNECTION.

BEFORE BREAKING INTO OR CONSTRUCTION ON A COUNTY SANITATION DISTRICT SEWER AND PRIOR TO FINAL ACCEPTANCE OF THE PROJECT, SANITATION DISTRICT INSPECTOR SHALL BE NOTIFIED BY PHONE (818) 962-8605 SO THAT REQUIRED INSPECTION CAN BE MADE.

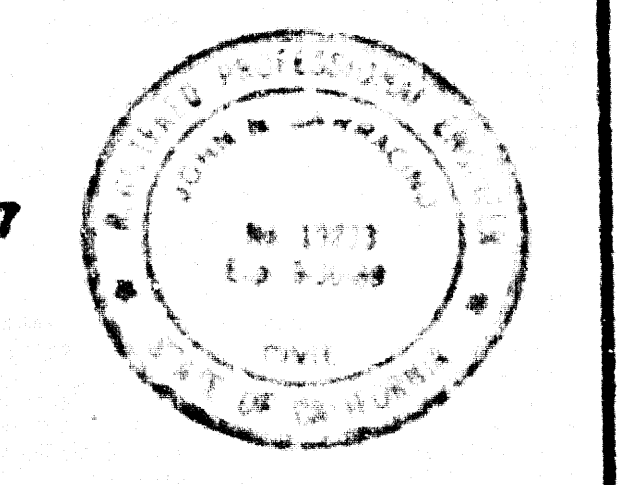
ISSUE NO PERMITS UNTIL OUTLET SEWER P.C. 10625 IS ACCEPTED FOR PUBLIC USE BY COUNTY OF LOS ANGELES

GENERAL NOTES.
 1. ELEVATIONS ARE IN FEET ABOVE U.S.C. & G.S. MEAN LEVEL DATUM OF 1984.
 2. NO REVISIONS SHALL BE MADE TO THESE PLANS WITHOUT THE APPROVAL OF THE DIRECTOR OF PUBLIC WORKS.
 3. NO REVISIONS MADE BY THE DEPT. OF PUBLIC WORKS WILL BE SHOWN ON ANY PORTION OF THE WORK.
 4. SPACES TO WHICH THIS IMPROVEMENT IS TO BE CONSTRUCTED ARE SHOWN ON PLANS AND PROFILES. SPACES FOR TOP OF CURBS, CENTER LINE OF STREETS, OR CENTER LINE OF ALLEYS ARE SHOWN ON PROFILES. AT ALL POINTS BETWEEN THE DESIGNATED POINTS THE GRADE SHALL BE ESTABLISHED SO AS TO CONFORM TO A STRAIGHT LINE DRAWN BETWEEN SAID DESIGNATED POINTS.
 5. THE PRIVATE ENGINEER SHALL FURNISH THE DEPT. OF PUBLIC WORKS WITH UNLESS SHEETS AND STATIONING FOR ALL HOUSE LATERALS AND "T" OR "T" BRANCHES AND SHALL PROVIDE STAKES FOR THE SAME AT THEIR PROPER LOCATIONS WITH STATIONING PLAINLY MARKED. ALL HOUSE LATERALS SHALL BE CONSTRUCTED IN A STRAIGHT LINE ALONG THE CENTER LINE OF THE MAIN LINE SEWER. ANY CHANGE IN ALIGNMENT SHALL BE REQUESTED IN WRITING BY THE PRIVATE ENGINEER.
 6. THE PRIVATE ENGINEER SHALL FURNISH THE HOUSE LATERAL DEPTH AT THE PROPERTY LINE BELOW THE TOP OF CURB ELEVATION FOR EACH HOUSE LATERAL ON THE GRADE SHEET.
 7. BEFORE WORK CAN BE STARTED THE CONTRACTOR MUST OBTAIN A PERMIT TO EXCAVATE IN COUNTY STREETS FROM THE COUNTY DIVISION OF THE LOS ANGELES DEPT. OF PUBLIC WORKS. IN ADDITION, THE CONTRACTOR SHALL OBTAIN A PERMIT TO EXCAVATE IN COUNTY STREETS FROM THE COUNTY DIVISION OF PUBLIC WORKS, 2250 ALCAZAR ST., LOS ANGELES, CA 90033, TO COVER THE COST OF CORSET, INSPECTION AND RECORD PLANS.
 8. IF WORK IS TO BE DONE IN A STATE HIGHWAY A PERMIT MUST BE OBTAINED FROM THE STATE OF CALIFORNIA, DIVISION OF HIGHWAYS, 130 SOUTH SPRING STREET, LOS ANGELES, CALIFORNIA.
 9. APPROVAL OF THESE PLANS BY THE COUNTY OF LOS ANGELES DOES NOT CONSTITUTE A REPRESENTATION AS TO THE ACCURACY OF THE LOCATION OR OF THE EXTENSIVE OR NON-EXISTENCE OF ANY UNDERGROUND UTILITY PIPE OR STRUCTURE WITHIN THE LIMITS OF THIS PROJECT. THIS NOTE APPLIES TO ALL PAGES.
 10. REFER TO SECTION 7.0.1 OF THE STANDARD SPECIFICATIONS REGARDING SAFETY SIGNALS.
 11. PRIOR TO THE ISSUANCE OF THE REQUIRED SANITATION DISTRICT PERMIT THE CONTRACTOR SHALL OBTAIN AND FILE WITH THE DEPT. OF PUBLIC WORKS COPIES OF A PERMIT TO EXCAVATE IN COUNTY STREETS FROM THE COUNTY DIVISION OF PUBLIC WORKS, A PERMIT FOR EXCAVATION AND TRENCHES FROM THE STATE OF CALIFORNIA DIVISION OF INDUSTRIAL SAFETY AND A CERTIFICATE OF WORKER'S COMPENSATION INSURANCE WITH THE DEPARTMENT OF PUBLIC WORKS, 2250 ALCAZAR ST., LOS ANGELES, CALIFORNIA 90033, ROOM 4203, IN ACCORDANCE WITH THE CERTIFICATE HOLDER TO NOTIFIED 20 DAYS PRIOR TO COMMENCEMENT OF WORK.

CONSTRUCTION NOTES:
 1. WORK SHALL BE CONSTRUCTED ACCORDING TO THE STANDARD SPECIFICATIONS FOR PUBLIC WORKS CONSTRUCTION 1988 EDITION WITH THE SUPPLEMENT AND DEPT. OF PUBLIC WORKS' SPECIAL PROVISIONS FOR THE CONSTRUCTION OF SANITARY SEWERS DATED SEPTEMBER 21, 1978 AND SHALL BE PROSECUTED ONLY IN THE PRESENCE OF THE DEPT. OF PUBLIC WORKS.
 2. THE CONTRACTOR SHALL NOTIFY THE CONSTRUCTION OF PUBLIC WORKS DEPT. TEL. 973-238-8881 AT LEAST 24 HOURS BEFORE STARTING ANY WORK UNDER THIS CONTRACT.
 3. HOUSE LATERALS TO BE CONSTRUCTED WITHIN THREE FEET OF PROPERTY LINE IS FEET BELOW CURB GRADE EXCEPT AS NOTED.
 4. VIVE OR BRANCHES MAY BE USED FOR CONNECTIONS TO MAINLINE SEWERS EXCEPT AS NOTED.
 5. VIVE BRANCHES ONLY MAY BE USED FOR CONNECTIONS TO MAINLINE SEWERS IF A 8" S.C.P. IS USED.
 6. ALL STRUCTURES SHALL BE EITHER BRICK MANHOLES PER 8.0 OR PRECAST CONCRETE MANHOLES PER 8.0. EXCEPT AS NOTED.
 7. PROVIDE STAKES ON THE PROPERTY LINE OR PROPERTY LINES PRODUCED AT RIGHT ANGLES TO THE SEWER LINE AT THE CENTER LINE OF EACH MANHOLE.
 8. MANHOLE TOPS IN UNIMPROVED RIGHTS OF WAY TO BE 36 INCHES ABOVE FINISHED GRADE.
 9. WITHEED CLAY PIPE JOINTS SHALL BE TYPE "D" OR "E" FOR STANDARD SPECIFICATIONS SECTION 200.2.
 10. IF A POWER POLE IS WITHIN THREE FEET OF THE SEWER, THE SEWER SHALL BE ENCASED PER 8.0. CASE A TWO FEET ON EACH SIDE FROM THE POINT OF INTERFERENCE.
 11. DURING THE COURSE OF CONSTRUCTION IT IS DETERMINED THAT THERE IS LESS THAN FOUR FEET COVER OVER THE TOP OF A MAINLINE OR HOUSE LATERAL SEWER WHICH IS NOT INDICATED ON THE PLANS, THE PIPE SHALL BE ENCASED PER 8.0. CASE B UNLESS OTHERWISE APPROVED BY THE DIRECTOR OF PUBLIC WORKS.
 12. ALL JOINTS BETWEEN CAST IRON PIPE AND WITHEED CLAY PIPE SHALL BE MADE WITH A RUBBER SLEEVE JOINT TYPE "C" OR "D" WITH GASKETING IF NECESSARY PER STANDARD SPECIFICATIONS SECTION 200.2.
 13. ALL JOINTS BETWEEN CAST IRON PIPE & A 8" S.C.P. SHALL BE MADE WITH APPROVED FITTINGS.
 14. SEWERS TO BE TESTED FOR LEAKAGE PER SECTION 200.4 OF THE STANDARD SPECIFICATIONS AND SPECIAL PROVISIONS.
 15. NEARLY ALL ALL REVISIONS WITHIN PAVED AREAS TO MEET L.A. COUNTY ROAD DEPT OR CALIFORNIA STATE HIGHWAY REQUIREMENTS IN ACCORDANCE WITH PERMITS.
 16. FULL COMPLIANCE WITH SECTION 200.1.3 OF THE STD. SPECIFICATIONS WILL BE REQUIRED FOR BACKFILL IN STREETS. CERTIFICATION OF BACKFILL COMPACTION AND SAND BOUNDARIES BY A QUALIFIED REGISTERED TESTING LABORATORY SHALL BE PROVIDED BY THE CONTRACTOR PRIOR TO THE ISSUANCE OF A CERTIFICATE OF FINAL ACCEPTANCE.
 17. SPECIAL BACKFILL IN BASEMENT CONSTRUCTION IN BACKFILL TRENCH AND REPLACE OTHER EARTH SO AS TO ACHIEVE THE NATURAL OR FINISHED GRADES AND SLOPES SHOWN ON THE GRADES PLAN APPROVED FOR THIS DEVELOPMENT. BY THE LAND DEV. DIVISION. IN ALL BACKFILL AND EARTH REPLACEMENT SHALL BE COMPACTED TO A MINIMUM OF 90% OF MAXIMUM DENSITY PER A 3" IN STD METHOD OF TEST D95 AS SPECIFIED. ACCEPTABLE CERTIFICATION OF SUCH COMPACTION SHALL BE SUBMITTED TO THE CONSTRUCTION DIVISION, DEPT. OF PUBLIC WORKS.

TRACT NO. 45380
 PRIVATE CONTRACT NO. 10686

U-149A
 1 SHEET OF 2 PAGES
 SCALE: HORIZ. 1"=60' VERT. 1"=4'
 MARCH 1987
 PREPARED IN THE OFFICES OF
 LIND & HILLERUD, INC.
 2005 HUNTINGTON DRIVE
 SANTA ANITA, CALIF. 91080
 BY: [Signature] REG. C.E. 18120



THE FOLLOWING LATEST REVISED STANDARD PLANS ON FILE IN THE OFFICE OF THE DEPARTMENT OF PUBLIC WORKS SHALL APPLY TO THE CONSTRUCTION OF THIS PROJECT:

LEGEND	8-1
MINIMUM PUBLIC SAFETY REQUIREMENTS	8-2
BRICK MANHOLE	8-3
STANDARD MANHOLE STOP	8-7
SECCING FOR SEWER PIPE	8-11
CHANNELS AND ENCASUREMENT	8-20
VIVE OR BRANCH	8-22
ALLOWABLE TRENCH WIDTHS	8-23
LOCKING MANHOLE FRAME AND COVER	8-28
NON-REINFORCED PRECAST CONCRETE MANHOLE	8-29

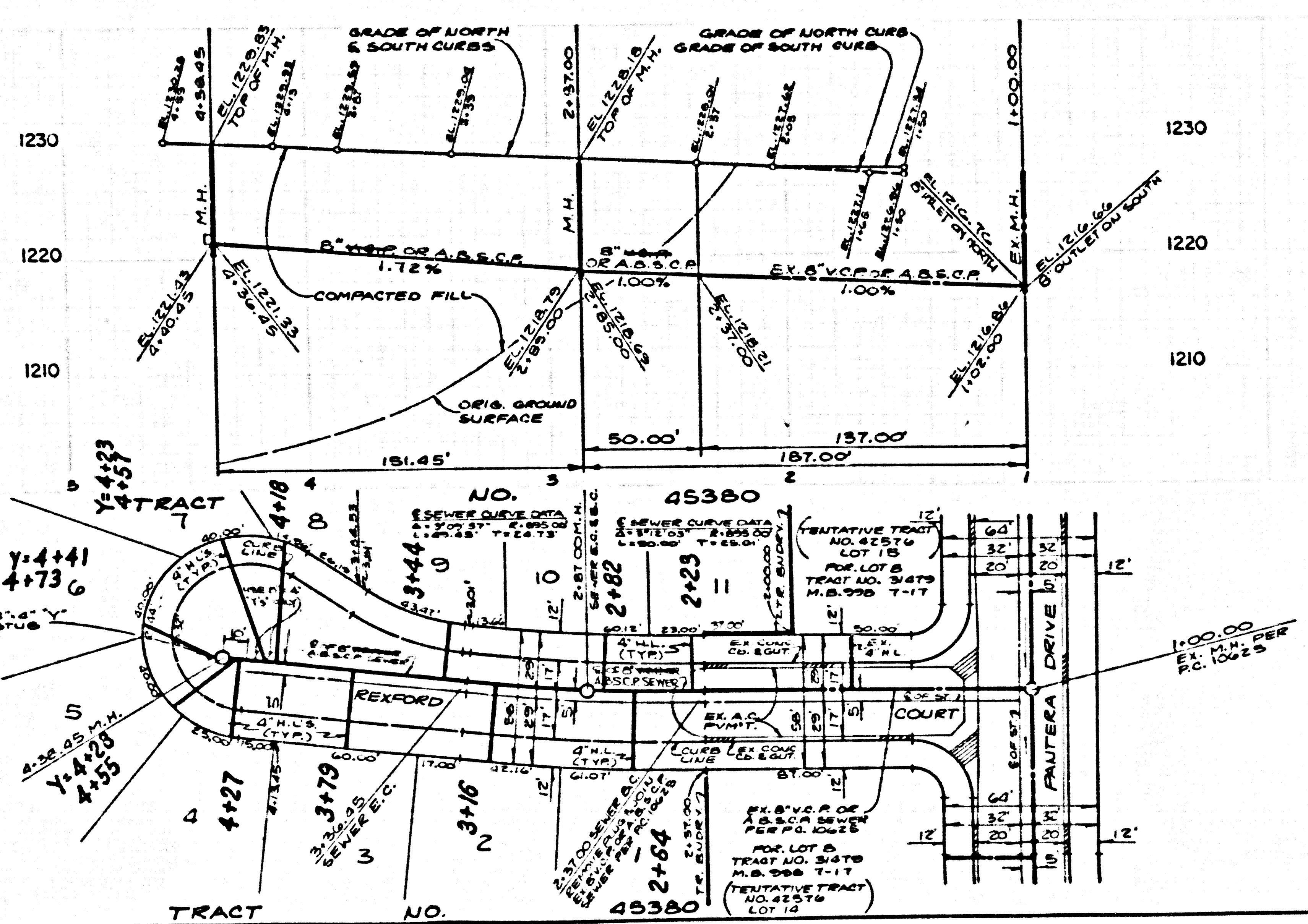
COUNTY OF LOS ANGELES, CALIFORNIA
 THOMAS A. TIDEMANSON, DIRECTOR
 DEPARTMENT OF PUBLIC WORKS
 APPROVED: [Signature] 4/1/87
 CHARLES W. CARRY, CHIEF ENGINEER
 DEPARTMENT OF PUBLIC WORKS
 APPROVED: [Signature] 4/1/87
 CHECKED: [Signature] 4/1/87
 REG. C.E. NO. 18120
 SAN DIMAS BLDG. DIST. 10,000

51599

REVIEWED BY: [Signature] P.C. 10686 PAGE 2
 DATE: 4/5/87

NO L.A. COUNTY CHARGES FOR CONNECTIONS
 USE SANITARY DISTRICT FOR SPECIAL CONNECTION CHARGES
 DOUBLE SCALE

51600



PC 10686

08324 .0W T/CART