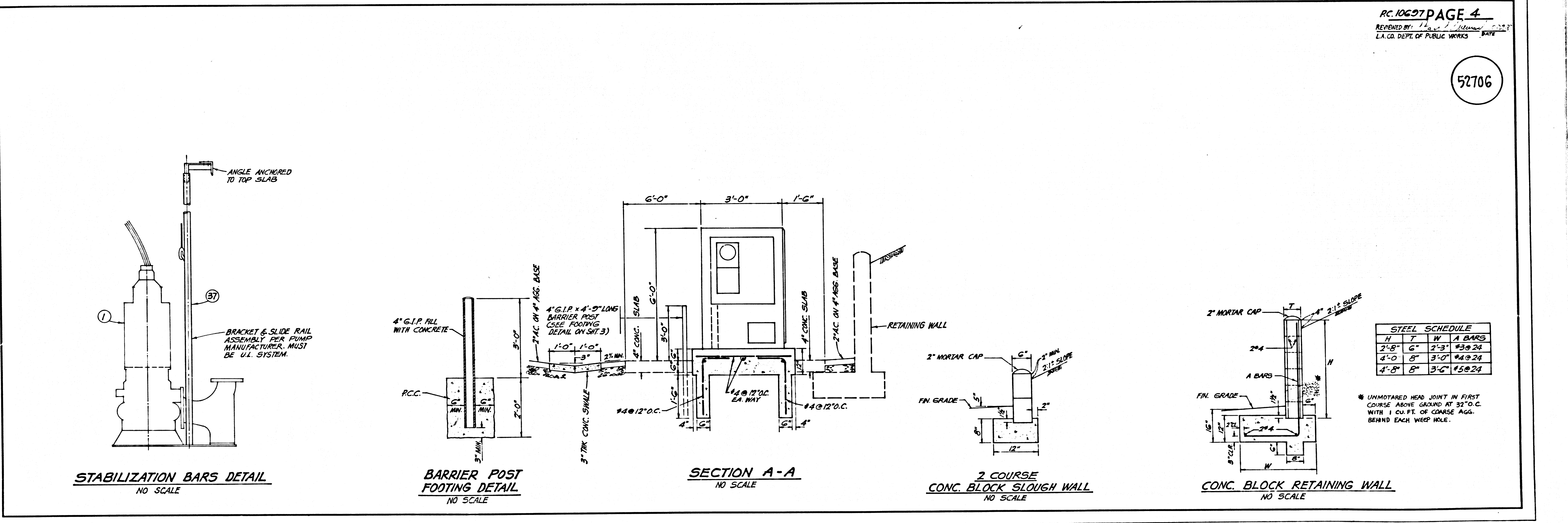
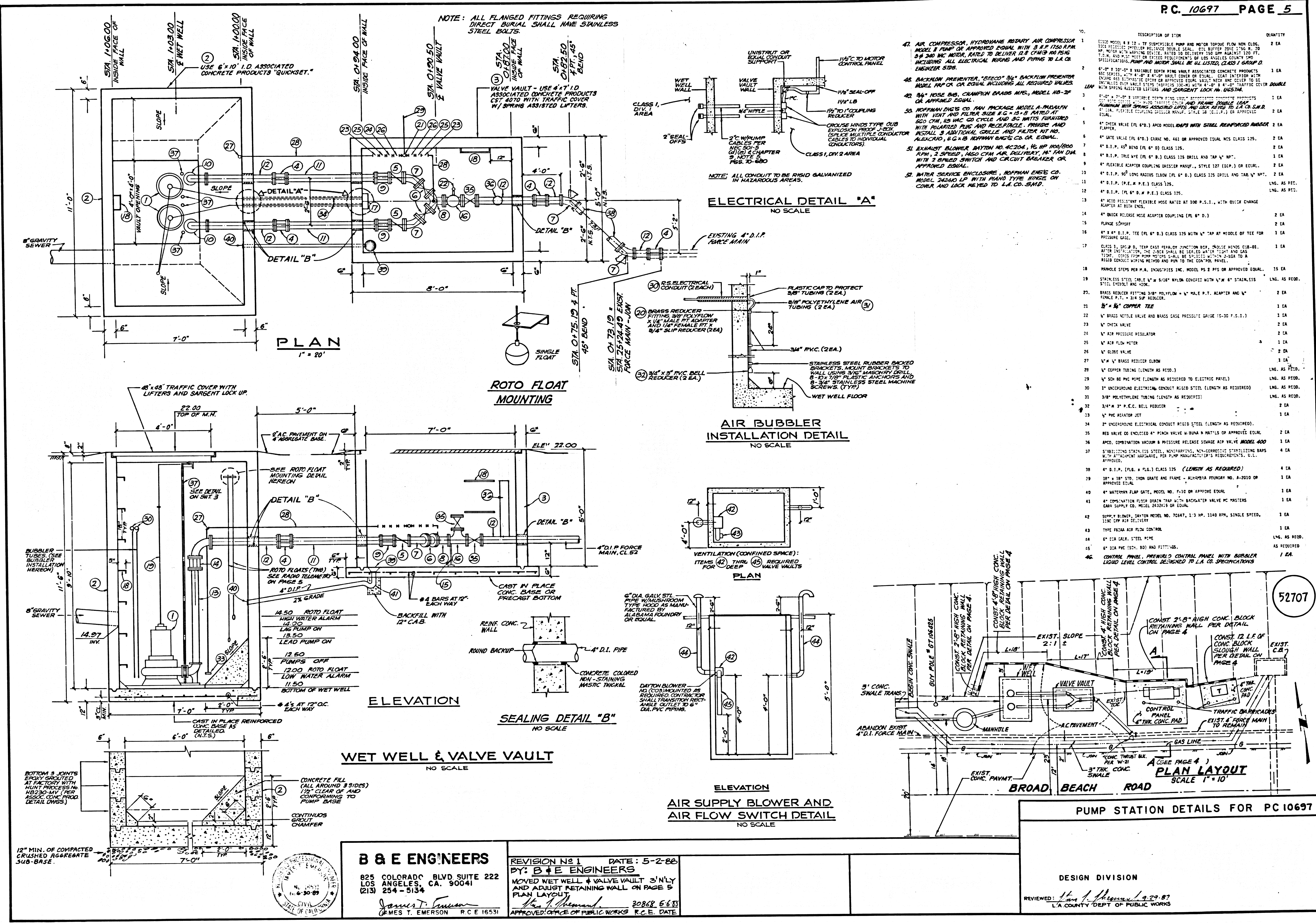


NOTE: ABANDON EXISTING 4\"/>



3

BROAD BEACH ROAD

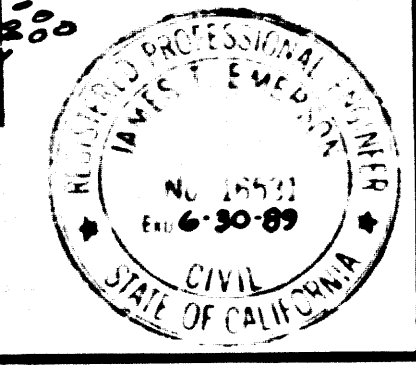


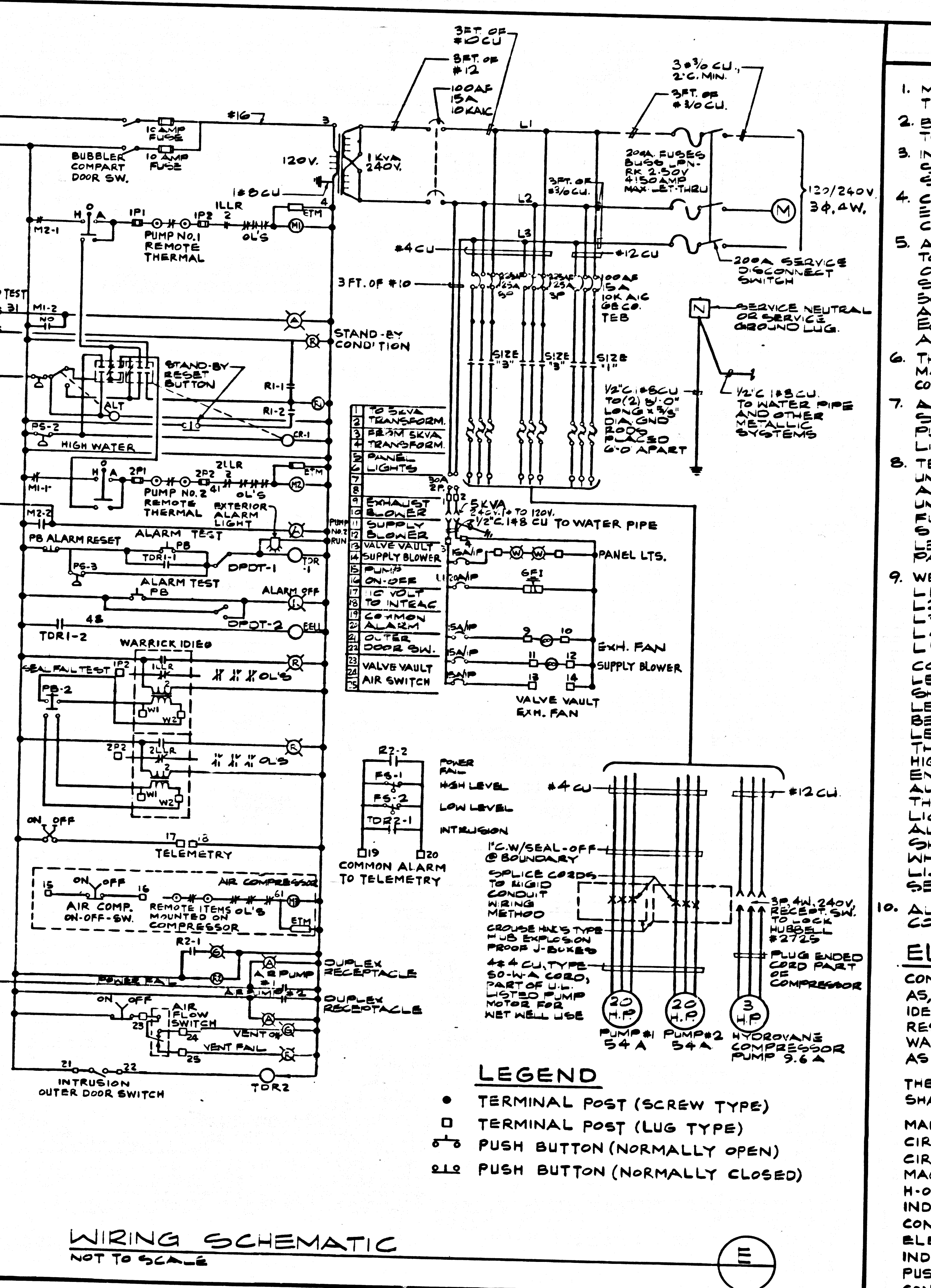
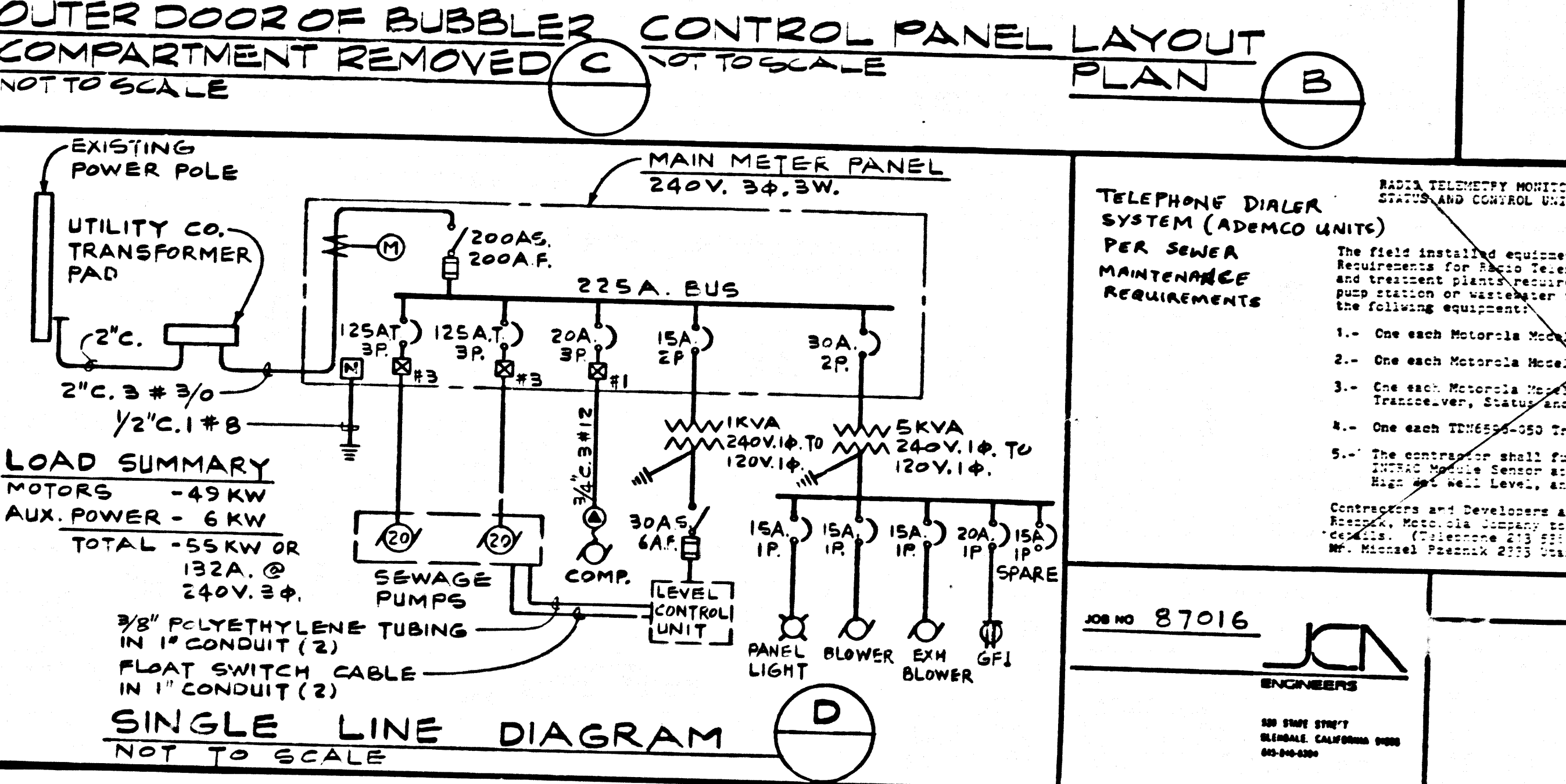
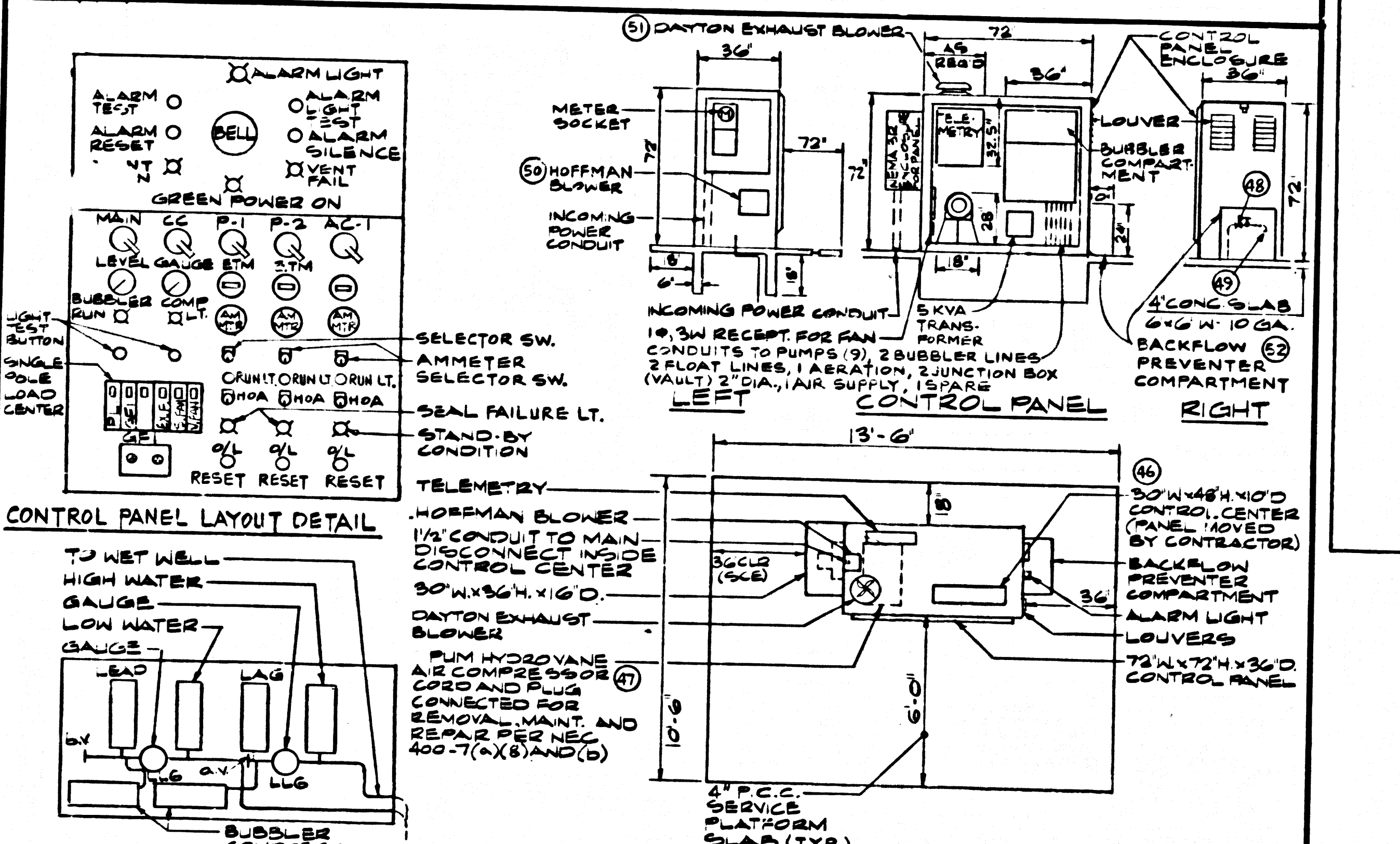
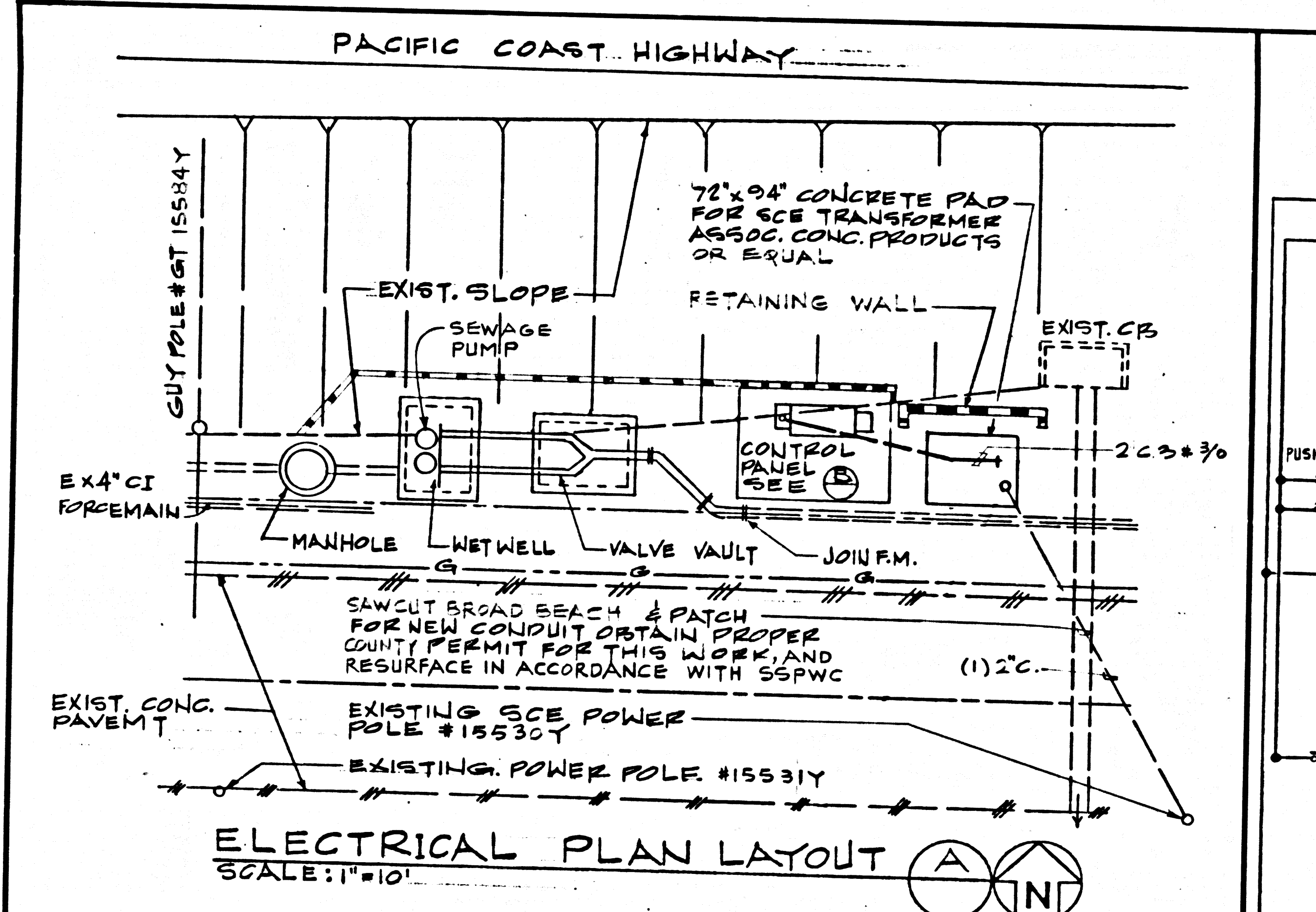
- DESCRIPTION OF ITEM QUANTITY
- 1 1/2" DIA. 1/2" THICK 1/2" LONG 1 EA
  - 2 1/2" DIA. 1/2" THICK 1/2" LONG 2 EA
  - 3 1/2" DIA. 1/2" THICK 1/2" LONG 1 EA
  - 4 1/2" DIA. 1/2" THICK 1/2" LONG 1 EA
  - 5 1/2" DIA. 1/2" THICK 1/2" LONG 1 EA
  - 6 1/2" DIA. 1/2" THICK 1/2" LONG 1 EA
  - 7 1/2" DIA. 1/2" THICK 1/2" LONG 1 EA
  - 8 1/2" DIA. 1/2" THICK 1/2" LONG 1 EA
  - 9 1/2" DIA. 1/2" THICK 1/2" LONG 1 EA
  - 10 1/2" DIA. 1/2" THICK 1/2" LONG 1 EA
  - 11 1/2" DIA. 1/2" THICK 1/2" LONG 1 EA
  - 12 1/2" DIA. 1/2" THICK 1/2" LONG 1 EA
  - 13 1/2" DIA. 1/2" THICK 1/2" LONG 1 EA
  - 14 1/2" DIA. 1/2" THICK 1/2" LONG 1 EA
  - 15 1/2" DIA. 1/2" THICK 1/2" LONG 1 EA
  - 16 1/2" DIA. 1/2" THICK 1/2" LONG 1 EA
  - 17 1/2" DIA. 1/2" THICK 1/2" LONG 1 EA
  - 18 1/2" DIA. 1/2" THICK 1/2" LONG 1 EA
  - 19 1/2" DIA. 1/2" THICK 1/2" LONG 1 EA
  - 20 1/2" DIA. 1/2" THICK 1/2" LONG 1 EA
  - 21 1/2" DIA. 1/2" THICK 1/2" LONG 1 EA
  - 22 1/2" DIA. 1/2" THICK 1/2" LONG 1 EA
  - 23 1/2" DIA. 1/2" THICK 1/2" LONG 1 EA
  - 24 1/2" DIA. 1/2" THICK 1/2" LONG 1 EA
  - 25 1/2" DIA. 1/2" THICK 1/2" LONG 1 EA
  - 26 1/2" DIA. 1/2" THICK 1/2" LONG 1 EA
  - 27 1/2" DIA. 1/2" THICK 1/2" LONG 1 EA
  - 28 1/2" DIA. 1/2" THICK 1/2" LONG 1 EA
  - 29 1/2" DIA. 1/2" THICK 1/2" LONG 1 EA
  - 30 1/2" DIA. 1/2" THICK 1/2" LONG 1 EA
  - 31 1/2" DIA. 1/2" THICK 1/2" LONG 1 EA
  - 32 1/2" DIA. 1/2" THICK 1/2" LONG 1 EA
  - 33 1/2" DIA. 1/2" THICK 1/2" LONG 1 EA
  - 34 1/2" DIA. 1/2" THICK 1/2" LONG 1 EA
  - 35 1/2" DIA. 1/2" THICK 1/2" LONG 1 EA
  - 36 1/2" DIA. 1/2" THICK 1/2" LONG 1 EA
  - 37 1/2" DIA. 1/2" THICK 1/2" LONG 1 EA
  - 38 1/2" DIA. 1/2" THICK 1/2" LONG 1 EA
  - 39 1/2" DIA. 1/2" THICK 1/2" LONG 1 EA
  - 40 1/2" DIA. 1/2" THICK 1/2" LONG 1 EA
  - 41 1/2" DIA. 1/2" THICK 1/2" LONG 1 EA
  - 42 1/2" DIA. 1/2" THICK 1/2" LONG 1 EA
  - 43 1/2" DIA. 1/2" THICK 1/2" LONG 1 EA
  - 44 1/2" DIA. 1/2" THICK 1/2" LONG 1 EA
  - 45 1/2" DIA. 1/2" THICK 1/2" LONG 1 EA
  - 46 1/2" DIA. 1/2" THICK 1/2" LONG 1 EA

**B & E ENGINEERS**  
 825 COLORADO BLVD SUITE 222  
 LOS ANGELES, CA. 90041  
 (213) 254-5154

REVISION NO 1 DATE: 5-2-88  
 BY: B & E ENGINEERS  
 MOVED WET WELL & VALVE VAULT 3' NLY  
 AND ADJUST RETAINING WALL ON PAGE 5  
 PLAN LAYOUT  
 APPROVED: [Signature] 20868 6/8/88  
 APPROVED: OFFICE OF PUBLIC WORKS R.C.E. DATE

DESIGN DIVISION  
 REVIEWED: [Signature] 8.29.87  
 L.A. COUNTY DEPT OF PUBLIC WORKS





**ELECTRICAL NOTES**

1. MAKE ALL NECESSARY ARRANGEMENTS WITH THE UTILITY COMPANY FOR NEW SERVICE.
2. PROVIDE A #4 BARE COPPER GROUND CONDUCTOR TO ALL METAL PIPES, PUMP FLATES & STEPS.
3. INSTALL ALL ELECTRICAL EQUIPMENT IN STRICT COMPLIANCE WITH THE NEW STATE SAFETY ORDERS AND APPLICABLE CODES.
4. CONDUIT RUNS ARE DIAGRAMMATIC. VERIFY EXACT LOCATION IN THE FIELD WITH SITE CONDITIONS.
5. ALL ELECTRICAL EQUIPMENT IN THE WET WELL TO BE EXPLOSION PROOF PER CLASS I OF STATE ELECTRICAL SAFETY ORDERS. LEAD CONDUITS INTO THIS AREA PER N.E.C. 501.5 AND WITH COMPOUNDS AND FITTINGS APPROVED BY COUNTY. ALL ELECTRICAL EQUIPMENT IN VALVE PIT OR CONTROL PANEL AREA TO BE CLASS I.
6. THE ELECTRICAL CONTROL PANEL SHALL BE MANUFACTURED IN ACCORDANCE WITH L.A. COUNTY ENGINEERING SPECIFICATIONS AND SHALL BE LISTED.
7. ALL MOTORS SHALL CONFORM TO NEMA STANDARDS AND SPECIFICATIONS. SEWAGE LISTED CLASS II DIVISION 1.
8. TELEMETRY MONITORING EQUIPMENT CONTROL UNIT SHALL CONTAIN POWER PANEL, CONTROL ANTENNA, TRANSMITTER, STATUS AND CONTROL FURNISH INSTALLATION LENS. CONTRACTOR TO FURNISH INSTALLATION LENS TO MODULE SENSOR APPARATUS FOR "POST WET WELL LEVEL", "HIGH WET WELL LEVEL" AND "CONTROL AREA INTRUSION ALARM".
9. WET WELL WATER LEVEL CONTROL
  - L1 LOW WATER LEVEL ALARM
  - L2 LEAD PUMP "OFF"
  - L3 LEAD PUMP "ON"
  - L4 LAG PUMP "ON"
  - L5 INTRUSION ALARM CIRCUIT
 CONTROL PANEL SHALL PROCESS AUTOMATIC LEVEL CONTROL FOR PUMPS. LEAD PUMP SHALL START WHEN LIQUID RISES TO LEVEL L3 AND STOP WHEN LIQUID RECEDES LEVEL L4. LAG PUMP SHALL START WHEN THE LIQUID RISES TO LEVEL L5. THE WET WELL WATER LEVEL ALARM CIRCUIT SHALL BE ENERGIZED WHEN THE LIQUID RISES TO LEVEL L3. THE LIQUID GOES BELOW L3, WHEN THE LIQUID DROPS TO L2, THE LOW WATER ALARM CIRCUIT SHALL BE ENERGIZED AND SHALL AUTOMATICALLY BE DE-ENERGIZED WHEN THE LIQUID LEVEL RISES ABOVE L2. THE ALTERNATOR SHALL AUTOMATICALLY SEQUENCE THE PUMPS AFTER BACK OPERATION.
10. ALL WIRING SHALL BE #12, RUN IN 1" RIGID CONDUIT.

**ELECTRICAL EQUIPMENT LIST**

COMPONENTS FOR THE ELECTRICAL SYSTEM SHALL BE AS, BUT NOT LIMITED TO, THE FOLLOWING ITEMS IDENTIFIED BELOW. IT SHALL BE THE CONTRACTOR'S RESPONSIBILITY TO PROVIDE SUFFICIENT MATERIAL AS WELL AS A DETAILED LIST OF MATERIAL QUANTITIES AS PART OF THE SHOP DRAWING SUBMITTAL.

THE FOLLOWING LIST IS GENERAL IN NATURE AND SHALL ONLY ACT AS A GUIDE.

MAIN CIRCUIT BREAKER AND METER SOCKET  
CIRCUIT BREAKERS-THERMAL MAGNETIC TYPE  
MAGNETIC STARTERS  
H-O-A (HAND-OFF-AUTOMATIC) SELECTOR SWITCHES  
INDICATOR LAMPS  
CONTROL TRANSFORMER  
ELECTRICAL ALTERNATORS  
INDUCTION TYP RELAYS  
PUSH TO TEST BOTTONS  
CONTROL SYSTEM WITH BUBBLER  
UNAUTHORIZED BUILDING ENTRY ALARM SYSTEM  
PUMP FLOAT SWITCHES  
RECEPTACLES  
ELECTRICAL PANEL, 120/240V. 3Ø. 4W.  
RADIO TELEMETRY SYSTEM  
RUNNING TIME METERS

**PUMP STATION DETAILS FOR PC 10697**

DESIGN DIVISION

REVIEWED: *[Signature]* 7-27-87  
L.A. COUNTY PUBLIC WORKS

JCA ENGINEERS E.E. NO.

**CONSTRUCTION NOTES**

1. THE CONTRACTOR SHALL VERIFY ALL DIMENSIONS PRIOR TO CONSTRUCTION.
2. THE CONTRACTOR SHALL VERIFY ALL MATERIALS AND EQUIPMENT MEETS SPECIFICATIONS.
3. THE CONTRACTOR SHALL VERIFY ALL MATERIALS AND EQUIPMENT MEETS SPECIFICATIONS.
4. ALL WIRE AND MATERIALS TO BE GUARANTEED FOR NOT LESS THAN ONE (1) YEAR.
5. THE CONTRACTOR SHALL BE RESPONSIBLE FOR THE PROTECTION OF ALL EXISTING UTILITIES AND STRUCTURES.
6. THE CONTRACTOR SHALL BE RESPONSIBLE FOR THE PROTECTION OF ALL EXISTING UTILITIES AND STRUCTURES.
7. THE CONTRACTOR SHALL BE RESPONSIBLE FOR THE PROTECTION OF ALL EXISTING UTILITIES AND STRUCTURES.
8. THE CONTRACTOR SHALL BE RESPONSIBLE FOR THE PROTECTION OF ALL EXISTING UTILITIES AND STRUCTURES.
9. THE CONTRACTOR SHALL BE RESPONSIBLE FOR THE PROTECTION OF ALL EXISTING UTILITIES AND STRUCTURES.
10. THE CONTRACTOR SHALL BE RESPONSIBLE FOR THE PROTECTION OF ALL EXISTING UTILITIES AND STRUCTURES.

**REVISIONS**

NO.	DESCRIPTION

52708