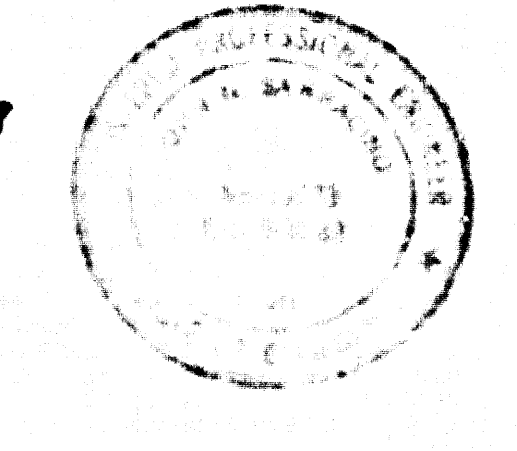


TRACT NO. 42564 PRIVATE CONTRACT NO. 10702

INDEX U-148 2 SHEETS, 4 PAGES APRIL 1937 PREPARED IN THE OFFICES OF LIND & MILLERUD, INC.



PRIVATE ENGINEER'S NOTICE TO CONTRACTORS

1. BENCHMARK IS IN FEET ABOVE U.S.C. & G.S. SEA LEVEL DATUM OF 1929... 2. NO REPRESENTATIVE OF THE DEPT. OF PUBLIC WORKS WILL SURVEY OR LAY OUT ANY PORTION OF THE WORK...

CONSTRUCTION NOTES CONT.

- 16. FULL COMPLIANCE WITH PART IV OF THE SPECIAL PROVISIONS IS REQUIRED FOR THE INSTALLATION OF A.B.S. COMPOSITE PIPE... 17. MANHOLE WATER STOP GASKETS AND CLAMPS ARE REQUIRED FOR THE CONNECTION OF A.B.S. COMPOSITE PIPE TO MANHOLE STRUCTURES...

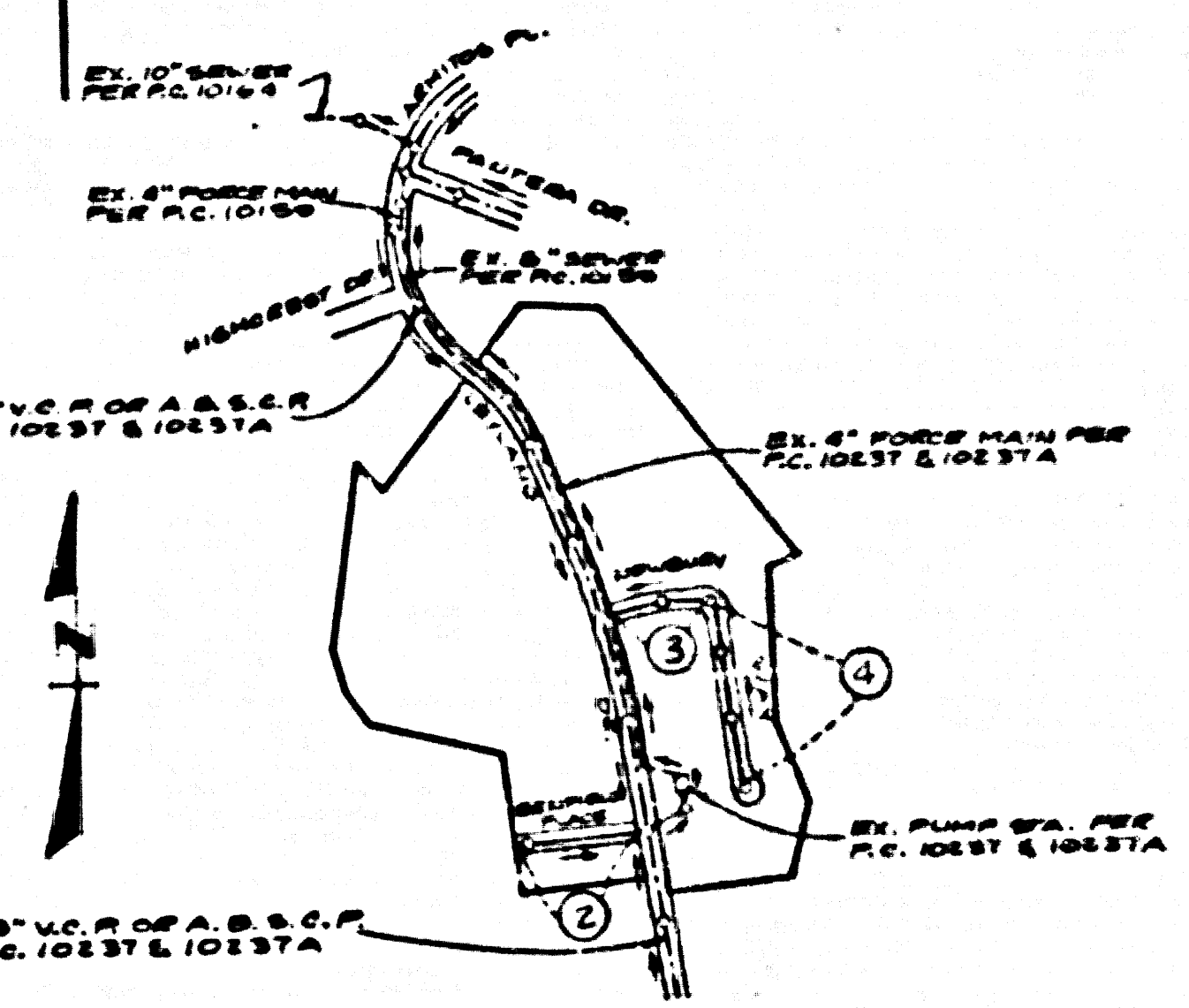
GENERAL NOTES:

- 1. BENCHMARK IS IN FEET ABOVE U.S.C. & G.S. SEA LEVEL DATUM OF 1929... 2. NO REPRESENTATIVE OF THE DEPT. OF PUBLIC WORKS WILL SURVEY OR LAY OUT ANY PORTION OF THE WORK...

CONSTRUCTION NOTES:

- 1. WORK SHALL BE CONSTRUCTED ACCORDING TO THE STANDARD SPECIFICATIONS FOR PUBLIC WORKS... 2. THE CONTRACTOR SHALL NOTIFY THE COUNTY PUBLIC WORKS DEPT. AT LEAST 24 HOURS BEFORE STARTING ANY WORK UNDER THIS CONTRACT...

B.M.C.-G-3911 ELEV. 895.556 L & T IN E. END C B 44 FT. S & 96 FT. W. C/L INT. GRAND AVE. & DIAMOND BAR BLVD. MKD BM C-12 OTTERBEIN QUAD. 19 73



NOTE: NUMBERS IN CIRCLES INDICATE PAGE NUMBERS

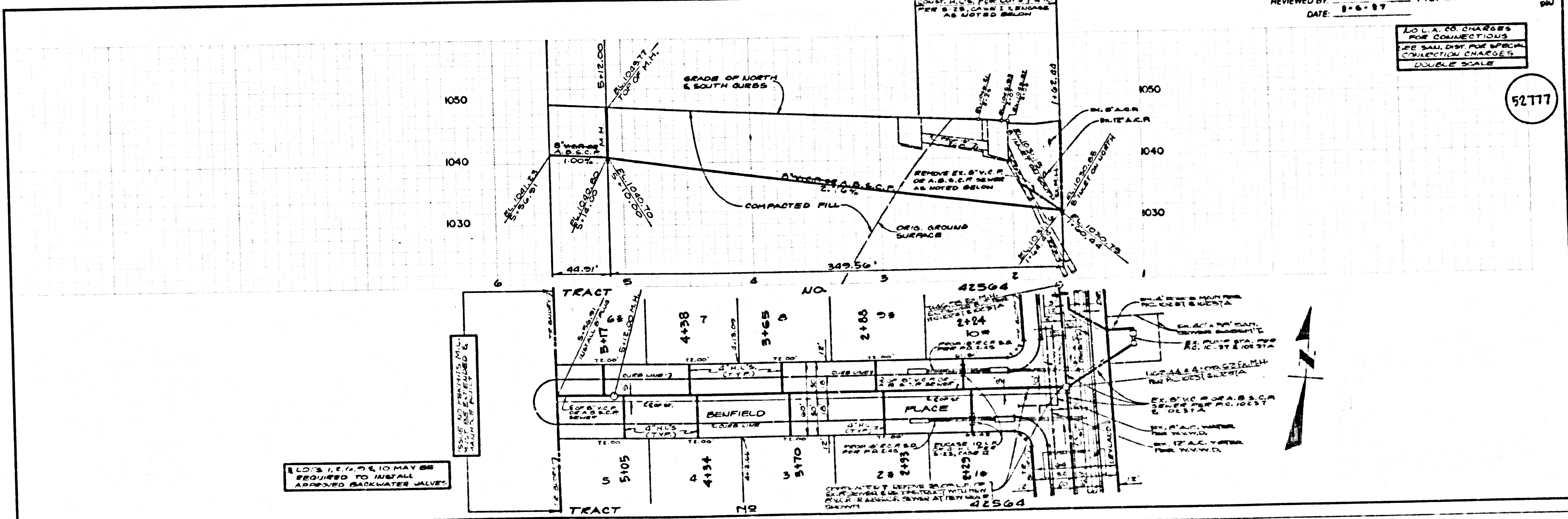
INDEX MAP TRACT NO. 42564 P.C. 10702 SCALE 1"=600'

LOTS 1, 2, 3, 4, 5, 6, 7, 8, 9, 10 MAY BE REQUIRED TO INSTALL APPROVED BACKWATER VALVES

Table listing materials and quantities: LINDING, BRICK MANHOLE, STANDARD MANHOLE STOP, BRICK FOR SEWER PIPE, CHAMBER AND ENCLOSURE, etc.

COUNTY OF LOS ANGELES, CALIFORNIA THOMAS A. TIEMANSON, DIRECTOR DEPARTMENT OF PUBLIC WORKS... CHARLES W. CARR, CHIEF ENGINEER... APPROVED: [Signature] DATE: 8-6-37

REVIEWED BY: S. R. [Signature] DATE: 8-6-37 P.C. 10702 PAGE 2



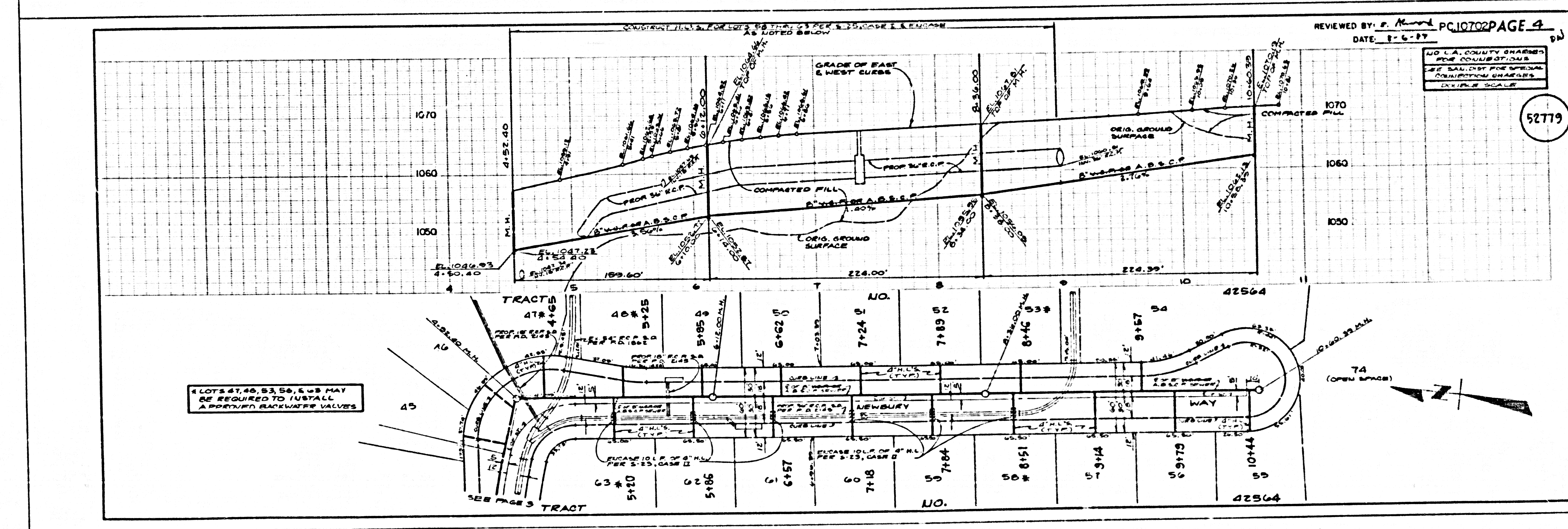
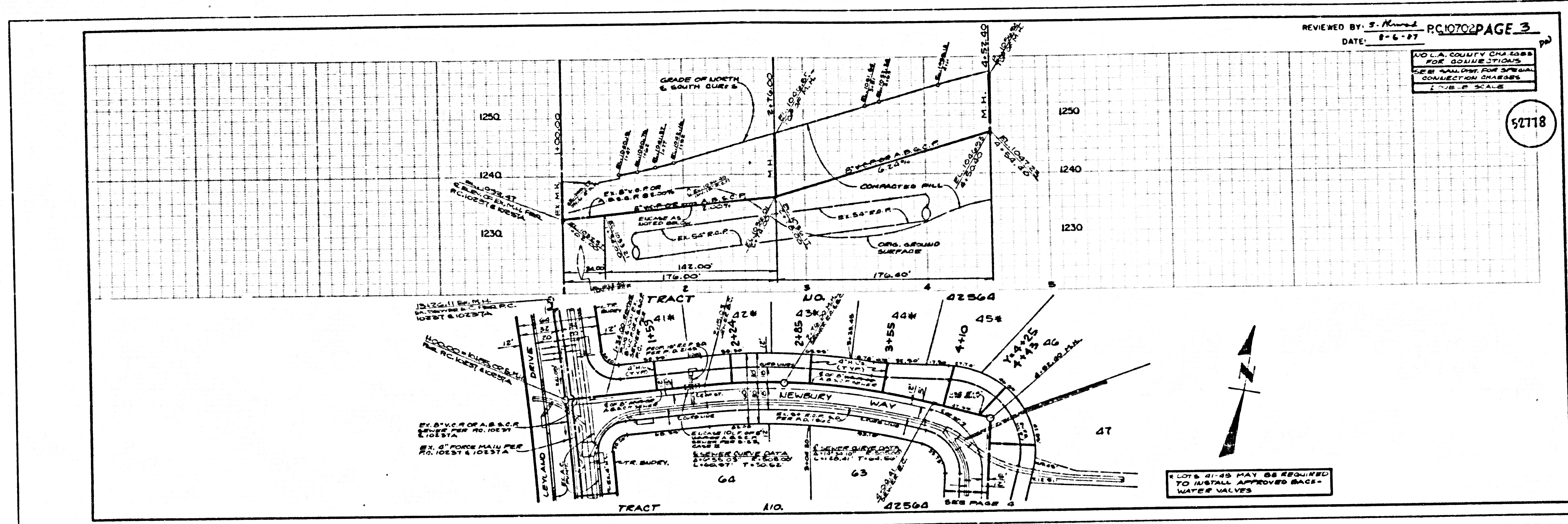
LOLA CO. CHARGES FOR CONNECTIONS TO THE SANITARY SEWER COLLECTION CHARGES DOUBLE SCALE

LOTS 1, 2, 3, 4, 5, 6, 7, 8, 9, 10 MAY BE REQUIRED TO INSTALL APPROVED BACKWATER VALVES

52776

52777

4835 P. ON TRACT



52778

BC 50701 39

52779

PARSP 91M TRACT