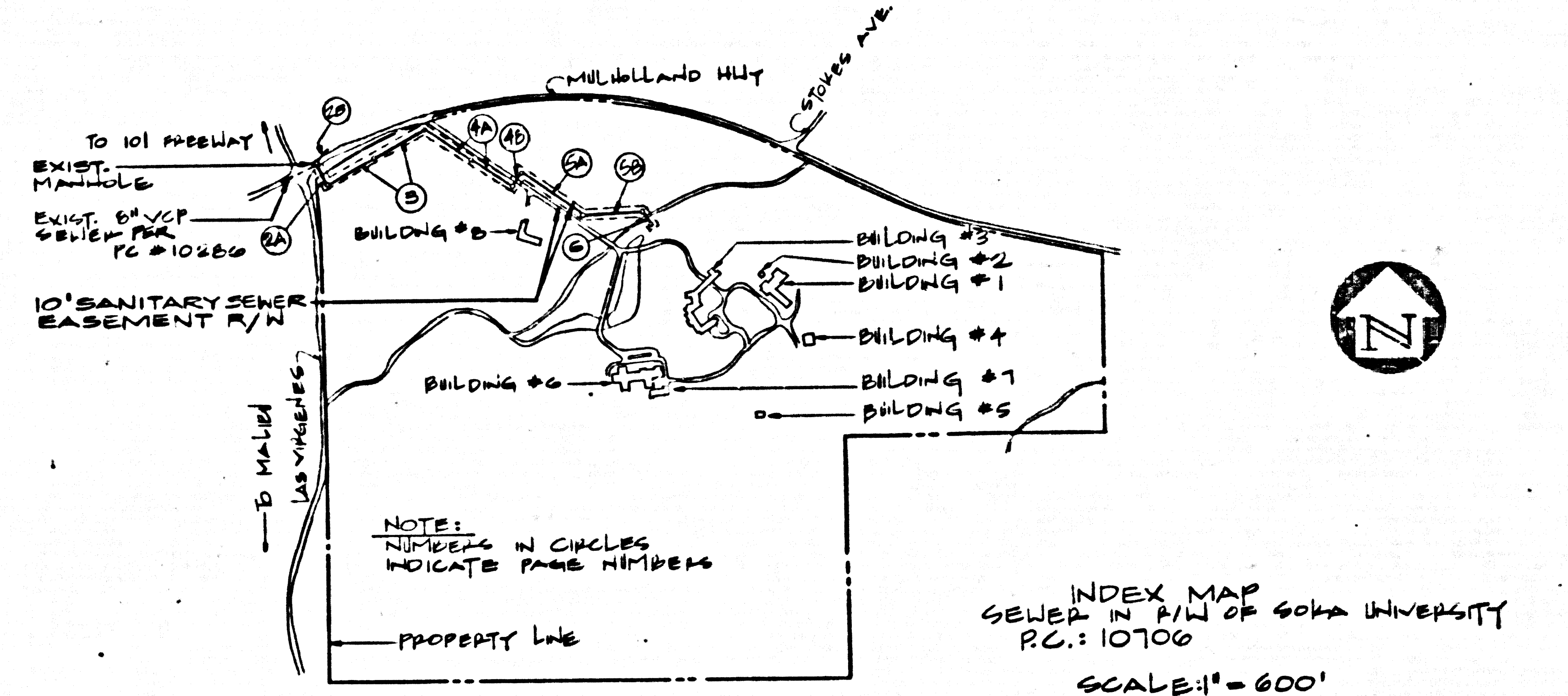


S.M.C.Y. 6451 ELEV. 510.512
 N.D. B.M. TAG IN CB 20 FT W/O ENTRANCE
 TO 604A HWY. MULHOLLAND HWY 30 FT
 S/O E. MULHOLLAND HWY 4.0 MILES S
 S/O LAS VIRGENES RD (RS. 22 L.A. CO. P.D. DEPT.)
 MALIBU QUAD. 1922
 1/10 = WEST OF
 5/0 = SOUTH OF
 5/0 = EAST OF

DOUBLE SCALE

NOTE: THIS SEWER WILL NOT BE
 ACCEPTED FOR MAINTENANCE BY
 THE COUNTY OF LOS ANGELES UNTIL
 THE SEWER EASEMENT IS RECORDED.



INDEX MAP
 SEWER IN R/W OF SOKA UNIVERSITY
 P.C.: 10706
 SCALE: 1" = 600'

GENERAL NOTES: D.P.W. DEPARTMENT OF PUBLIC WORKS

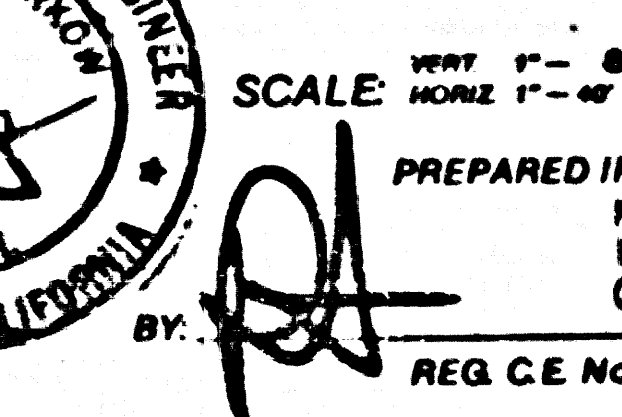
- ELEVATIONS ARE IN FEET ABOVE U.S.C. & G.S. SEA LEVEL DATUM OF 1988.
- NO ADJUSTMENTS SHALL BE MADE IN THESE PLANS WITHOUT THE APPROVAL OF THE DIRECTOR OF PUBLIC WORKS.
- NO REPRESENTATIVE OF THE DEPARTMENT OF PUBLIC WORKS SHALL SURVEY OR LAY OUT ANY PORTION OF THE WORK.
- GRADES TO WHICH THIS IMPROVEMENT IS TO BE CONSTRUCTED ARE SHOWN ON PLANS AND PROFILES. GRADES SHOWN FOR TOP OF CURBS, CENTERLINE OF STREETS OR CENTERLINE OF ALL LINES SHOWN BY CIRCLES ON PROFILES AT ALL POINTS BETWEEN DELETED POINTS. THE GRADE SHALL BE ESTABLISHED SO AS TO CONFORM TO A STRAIGHT LINE BETWEEN SAID DELETED POINTS.
- THE PRIVATE ENGINEER SHALL FURNISH THE DEPARTMENT OF PUBLIC WORKS WITH GRADE SHEETS AND STATIONINGS FOR ALL HOUSE LATERALS AND 10" OR 12" BRANCHES AND SHALL PROVIDE STAKES FOR THEM AT THEIR PROPER LOCATIONS WITH STATIONING PLAINLY MARKED. ALL HOUSE LATERALS SHALL BE CONSTRUCTED IN A STRAIGHT LINE FROM THE MAIN LINE SEWER EXCEPT AS SHOWN ON THE PLANS. HOUSE LATERALS FROM CHIMNEYS SHALL NOT HAVE AN ANGLE OF LESS THAN 45° WITH THE MAIN LINE SEWER. ANY CHANGE IN ALIGNMENT SHALL BE INDICATED IN WRITING BY THE PRIVATE ENGINEER.
- THE PRIVATE ENGINEER SHALL FURNISH THE HOUSE LATERAL DEPTH AT THE PROPERTY LINE BELOW THE TOP OF CURB ELEVATION FOR EACH HOUSE LATERAL ON THE GRADE SHEET.
- BEFORE WORK CAN BE STARTED THE CONTRACTOR MUST OBTAIN A PERMIT TO EXCAVATE IN COUNTY STREETS FROM THE COMPT. ENR. OF THE LOS ANGELES DEPARTMENT OF PUBLIC WORKS (PERMIT OFFICE, RM. 502) AND PAY A FEE TO THE DIRECTOR OF PUBLIC WORKS, \$250 ALL C.A.Z. ARE P.L.C.: ANGELES, CALIFORNIA 90007 TO COVER THE COST OF CONSTRUCTION INSPECTION AND RECORD PLANS.
- IF WORK IS TO DONE IN A STATE HIGHWAY A PERMIT MUST BE OBTAINED FROM THE STATE OF CALIFORNIA, DIVISION OF HIGHWAYS, 120 SOUTH SPRING STREET, LOS ANGELES, CALIFORNIA.
- APPROVAL OF THIS PLAN BY THE COUNTY OF LOS ANGELES DOES NOT CONSTITUTE A REPRESENTATION AS TO THE ACCURACY OF THE LOCATION OF OR THE EXISTENCE OR NON-EXISTENCE OF ANY UNDERGROUND UTILITY PIPE OR STRUCTURE WITHIN THE LIMITS OF THIS PROJECT. THIS NOTE APPLIES TO ALL PAGES.
- REFER TO SECTION 7.8.4.1 OF THE STANDARD SPECIFICATIONS, REGARDING SAFETY ORDERS.
- PRIOR TO THE ISSUANCE OF THE REQUIRED BY-LAW CONSTRUCTION PERMIT, THE CONTRACTOR SHALL OBTAIN AND FEE WITH THE DEPARTMENT OF PUBLIC WORKS COPIES OF A PERMIT TO EXCAVATE IN COUNTY STREETS FROM THE COMPT. ENR. OF THE DEPARTMENT OF PUBLIC WORKS. A PERMIT FOR EXCAVATION OF TRENCHES FROM THE STATE OF CALIFORNIA, A CODE OF INDUSTRIAL SAFETY AND A CERTIFICATE OF WORKER'S COMPENSATION INSURANCE WITH THE DEPARTMENT OF PUBLIC WORKS, ERSO ALGASAR, 91, LOS ANGELES, CALIFORNIA 90007, MUST BE OBTAINED AS THE CERTIFICATE MUST BE NOTIFIED BY DATE PRIOR TO CANCELLATION OF PERMIT.

CONSTRUCTION NOTES:

- WORK SHALL BE CONSTRUCTED ACCORDING TO THE STANDARD SPECIFICATIONS FOR PUBLIC WORKS CONSTRUCTION (1988 EDITION WITH SUPPLEMENT 1, 2, 3, 4, 5, 6, 7, 8, 9, 10, 11, 12, 13, 14, 15, 16, 17, 18, 19, 20, 21, 22, 23, 24, 25, 26, 27, 28, 29, 30, 31, 32, 33, 34, 35, 36, 37, 38, 39, 40, 41, 42, 43, 44, 45, 46, 47, 48, 49, 50, 51, 52, 53, 54, 55, 56, 57, 58, 59, 60, 61, 62, 63, 64, 65, 66, 67, 68, 69, 70, 71, 72, 73, 74, 75, 76, 77, 78, 79, 80, 81, 82, 83, 84, 85, 86, 87, 88, 89, 90, 91, 92, 93, 94, 95, 96, 97, 98, 99, 100, 101, 102, 103, 104, 105, 106, 107, 108, 109, 110, 111, 112, 113, 114, 115, 116, 117, 118, 119, 120, 121, 122, 123, 124, 125, 126, 127, 128, 129, 130, 131, 132, 133, 134, 135, 136, 137, 138, 139, 140, 141, 142, 143, 144, 145, 146, 147, 148, 149, 150, 151, 152, 153, 154, 155, 156, 157, 158, 159, 160, 161, 162, 163, 164, 165, 166, 167, 168, 169, 170, 171, 172, 173, 174, 175, 176, 177, 178, 179, 180, 181, 182, 183, 184, 185, 186, 187, 188, 189, 190, 191, 192, 193, 194, 195, 196, 197, 198, 199, 200, 201, 202, 203, 204, 205, 206, 207, 208, 209, 210, 211, 212, 213, 214, 215, 216, 217, 218, 219, 220, 221, 222, 223, 224, 225, 226, 227, 228, 229, 230, 231, 232, 233, 234, 235, 236, 237, 238, 239, 240, 241, 242, 243, 244, 245, 246, 247, 248, 249, 250, 251, 252, 253, 254, 255, 256, 257, 258, 259, 260, 261, 262, 263, 264, 265, 266, 267, 268, 269, 270, 271, 272, 273, 274, 275, 276, 277, 278, 279, 280, 281, 282, 283, 284, 285, 286, 287, 288, 289, 290, 291, 292, 293, 294, 295, 296, 297, 298, 299, 300, 301, 302, 303, 304, 305, 306, 307, 308, 309, 310, 311, 312, 313, 314, 315, 316, 317, 318, 319, 320, 321, 322, 323, 324, 325, 326, 327, 328, 329, 330, 331, 332, 333, 334, 335, 336, 337, 338, 339, 340, 341, 342, 343, 344, 345, 346, 347, 348, 349, 350, 351, 352, 353, 354, 355, 356, 357, 358, 359, 360, 361, 362, 363, 364, 365, 366, 367, 368, 369, 370, 371, 372, 373, 374, 375, 376, 377, 378, 379, 380, 381, 382, 383, 384, 385, 386, 387, 388, 389, 390, 391, 392, 393, 394, 395, 396, 397, 398, 399, 400, 401, 402, 403, 404, 405, 406, 407, 408, 409, 410, 411, 412, 413, 414, 415, 416, 417, 418, 419, 420, 421, 422, 423, 424, 425, 426, 427, 428, 429, 430, 431, 432, 433, 434, 435, 436, 437, 438, 439, 440, 441, 442, 443, 444, 445, 446, 447, 448, 449, 450, 451, 452, 453, 454, 455, 456, 457, 458, 459, 460, 461, 462, 463, 464, 465, 466, 467, 468, 469, 470, 471, 472, 473, 474, 475, 476, 477, 478, 479, 480, 481, 482, 483, 484, 485, 486, 487, 488, 489, 490, 491, 492, 493, 494, 495, 496, 497, 498, 499, 500, 501, 502, 503, 504, 505, 506, 507, 508, 509, 510, 511, 512, 513, 514, 515, 516, 517, 518, 519, 520, 521, 522, 523, 524, 525, 526, 527, 528, 529, 530, 531, 532, 533, 534, 535, 536, 537, 538, 539, 540, 541, 542, 543, 544, 545, 546, 547, 548, 549, 550, 551, 552, 553, 554, 555, 556, 557, 558, 559, 560, 561, 562, 563, 564, 565, 566, 567, 568, 569, 570, 571, 572, 573, 574, 575, 576, 577, 578, 579, 580, 581, 582, 583, 584, 585, 586, 587, 588, 589, 590, 591, 592, 593, 594, 595, 596, 597, 598, 599, 600, 601, 602, 603, 604, 605, 606, 607, 608, 609, 610, 611, 612, 613, 614, 615, 616, 617, 618, 619, 620, 621, 622, 623, 624, 625, 626, 627, 628, 629, 630, 631, 632, 633, 634, 635, 636, 637, 638, 639, 640, 641, 642, 643, 644, 645, 646, 647, 648, 649, 650, 651, 652, 653, 654, 655, 656, 657, 658, 659, 660, 661, 662, 663, 664, 665, 666, 667, 668, 669, 670, 671, 672, 673, 674, 675, 676, 677, 678, 679, 680, 681, 682, 683, 684, 685, 686, 687, 688, 689, 690, 691, 692, 693, 694, 695, 696, 697, 698, 699, 700, 701, 702, 703, 704, 705, 706, 707, 708, 709, 710, 711, 712, 713, 714, 715, 716, 717, 718, 719, 720, 721, 722, 723, 724, 725, 726, 727, 728, 729, 730, 731, 732, 733, 734, 735, 736, 737, 738, 739, 740, 741, 742, 743, 744, 745, 746, 747, 748, 749, 750, 751, 752, 753, 754, 755, 756, 757, 758, 759, 760, 761, 762, 763, 764, 765, 766, 767, 768, 769, 770, 771, 772, 773, 774, 775, 776, 777, 778, 779, 780, 781, 782, 783, 784, 785, 786, 787, 788, 789, 790, 791, 792, 793, 794, 795, 796, 797, 798, 799, 800, 801, 802, 803, 804, 805, 806, 807, 808, 809, 810, 811, 812, 813, 814, 815, 816, 817, 818, 819, 820, 821, 822, 823, 824, 825, 826, 827, 828, 829, 830, 831, 832, 833, 834, 835, 836, 837, 838, 839, 840, 841, 842, 843, 844, 845, 846, 847, 848, 849, 850, 851, 852, 853, 854, 855, 856, 857, 858, 859, 860, 861, 862, 863, 864, 865, 866, 867, 868, 869, 870, 871, 872, 873, 874, 875, 876, 877, 878, 879, 880, 881, 882, 883, 884, 885, 886, 887, 888, 889, 890, 891, 892, 893, 894, 895, 896, 897, 898, 899, 900, 901, 902, 903, 904, 905, 906, 907, 908, 909, 910, 911, 912, 913, 914, 915, 916, 917, 918, 919, 920, 921, 922, 923, 924, 925, 926, 927, 928, 929, 930, 931, 932, 933, 934, 935, 936, 937, 938, 939, 940, 941, 942, 943, 944, 945, 946, 947, 948, 949, 950, 951, 952, 953, 954, 955, 956, 957, 958, 959, 960, 961, 962, 963, 964, 965, 966, 967, 968, 969, 970, 971, 972, 973, 974, 975, 976, 977, 978, 979, 980, 981, 982, 983, 984, 985, 986, 987, 988, 989, 990, 991, 992, 993, 994, 995, 996, 997, 998, 999, 1000.

R/W OF SOKA UNIVERSITY PRIVATE CONTRACT NO. 10706

INDEX C-253 3 SHEETS, 6 PAGES



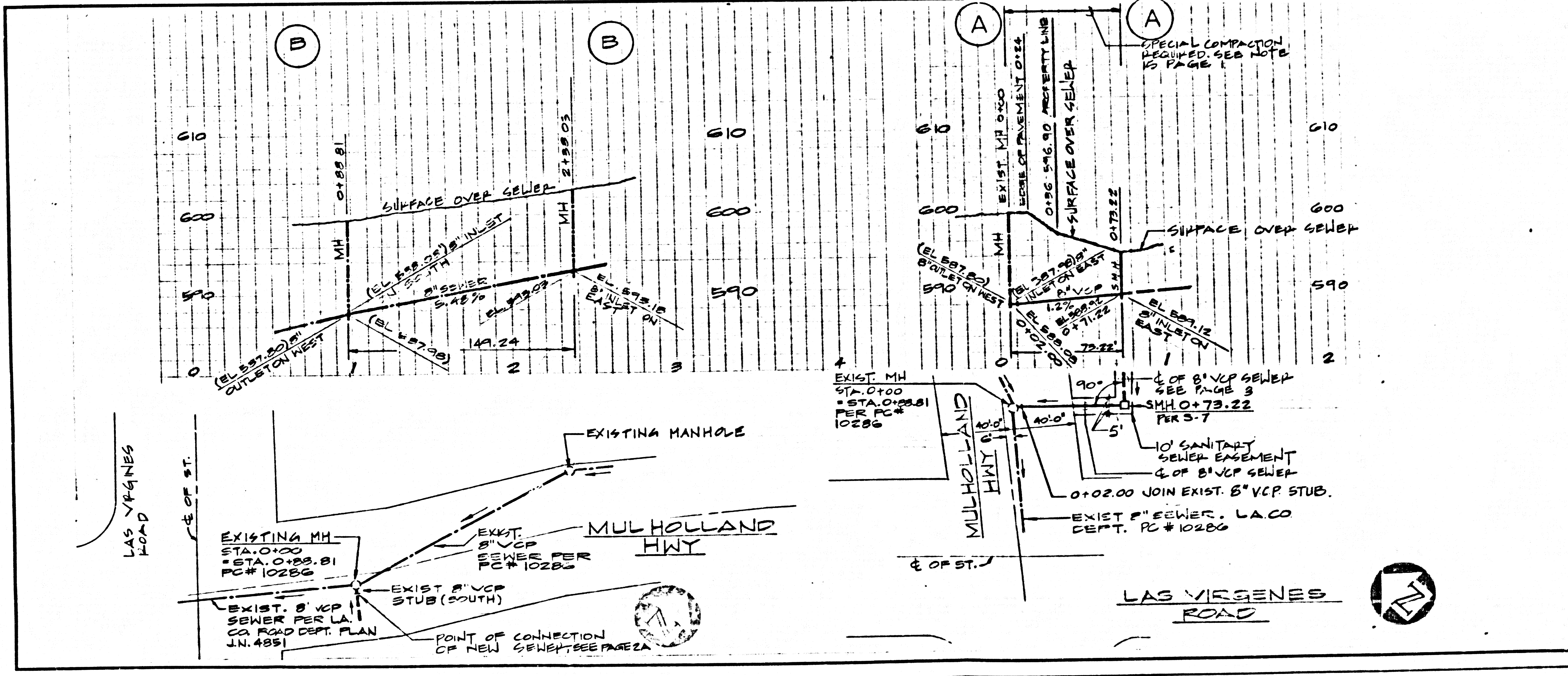
SCALE: VERT. 1" = 8' HORIZ. 1" = 40'
 AUG. 1987
 PREPARED IN THE OFFICES OF ROBERT TCHIRIKOV 1811 4TH ST. SANTA MONICA (310) 451-2081
 REG. C.E. No. 252430

THE FOLLOWING LATEST REVISION STANDARD PLANS ON FILE IN THE OFFICE OF THE DEPARTMENT OF PUBLIC WORKS SHALL APPLY TO THE CONSTRUCTION OF THIS PROJECT:

LEGEND	0-1
MINIMUM PUBLIC SAFETY REQUIREMENTS	0-2
BRICK MANHOLE	0-3
STANDARD MANHOLE STEP	0-17
BEDDING FOR SEWER PIPE	0-11
CRACKING AND ENCASEMENT	0-20
PIPE ON TEE SUPPORT	0-26
ALLOWABLE TRENCH WIDTHS	0-28
LOCKING MANHOLE FRAME AND COVER	0-30
NON-REINFORCED PRECAST CONCRETE MANHOLE	0-30
RECTANGULAR MANHOLE MANHOLE	0-7
CHIMNEY PIPE AND BASE	0-27

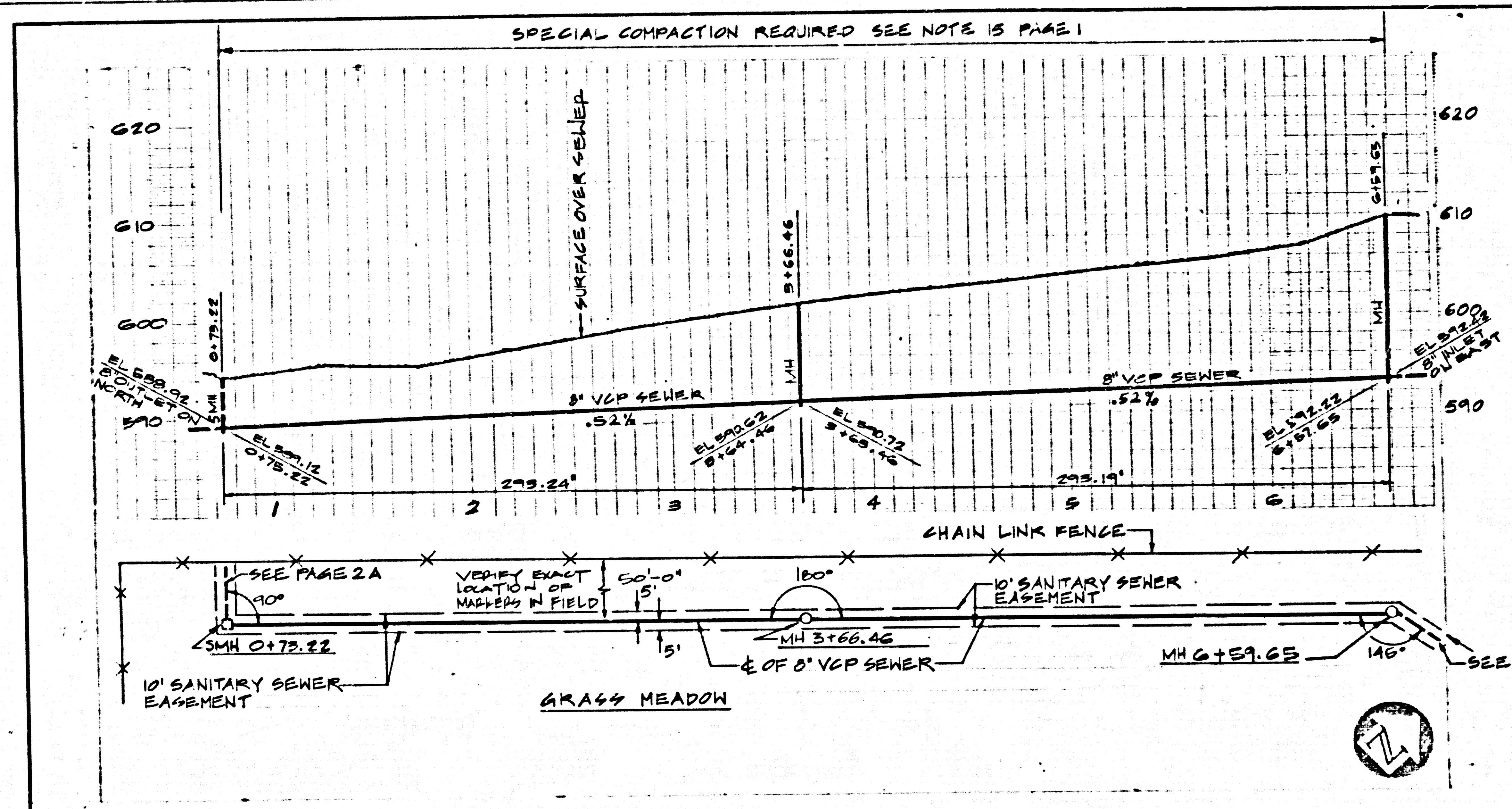
COUNTY OF LOS ANGELES, CALIFORNIA
 THOMAS A. TIDEMANSON H.I. 57486 CHIEF ENGINEER
 DIRECTOR OF PUBLIC WORKS
 APPROVED: [Signature] 9/15/87 APPROVED: [Signature] 9/15/87
 CHECKED: [Signature] 9/16/87
 REG. C.E. NO. 33154
 CALIFORNIA BLDG. DIST. 9.1

REVIEWED BY [Signature] 9/10/87



NO L.A. COUNTY CONNECTION CHARGES
 SEE L.V.M.W.D. FOR SPECIAL CONNECTION CHARGES
 DOUBLE SCALE

52118



PC # 10706 PAGE 3

REVIEWED BY *[Signature]* DATE *9/14/87*

NO L.A. COUNTY CONNECTION CHARGES

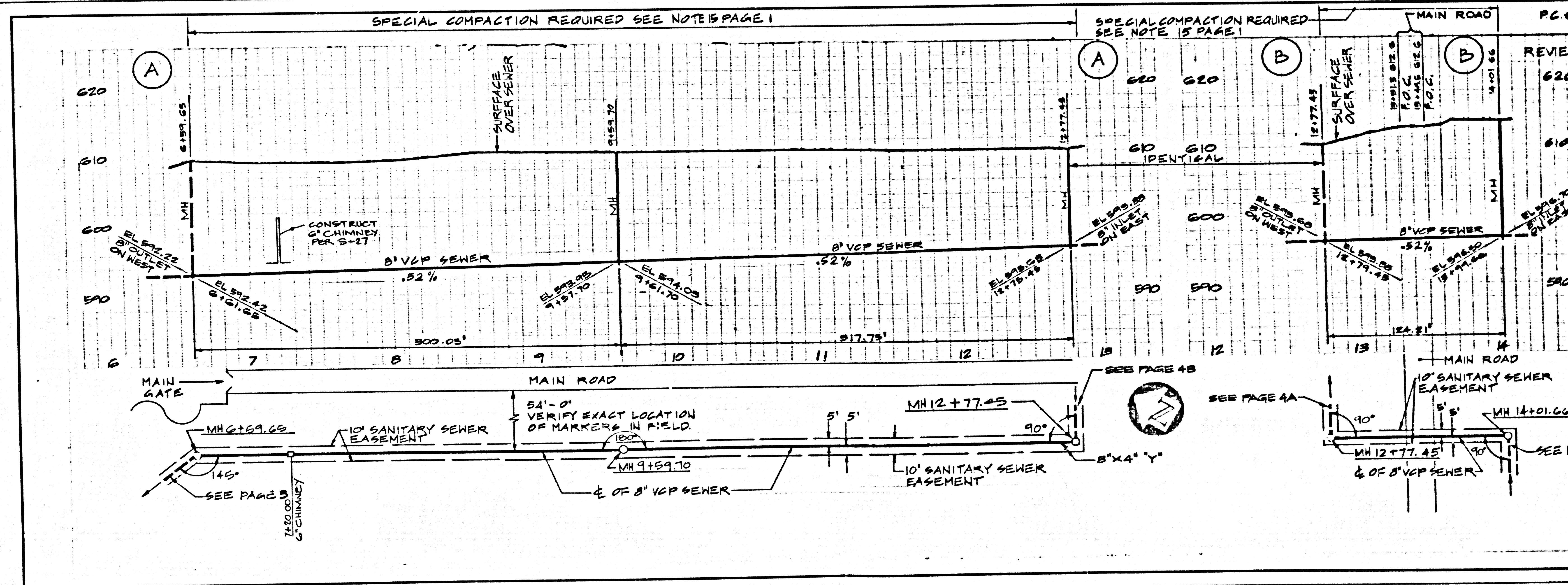
SEE L.V.M.H.D. FOR SPECIAL CONNECTION CHARGES

DOUBLE SCALE

52119

5

LC 10701 29



PC # 10706 PAGE 4

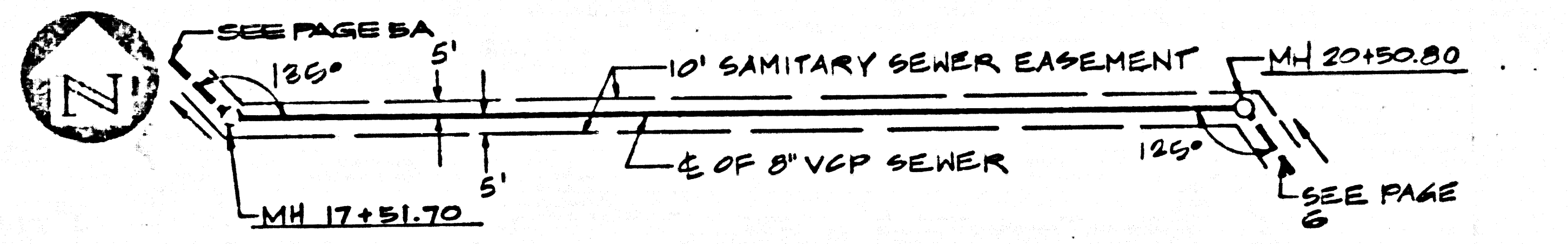
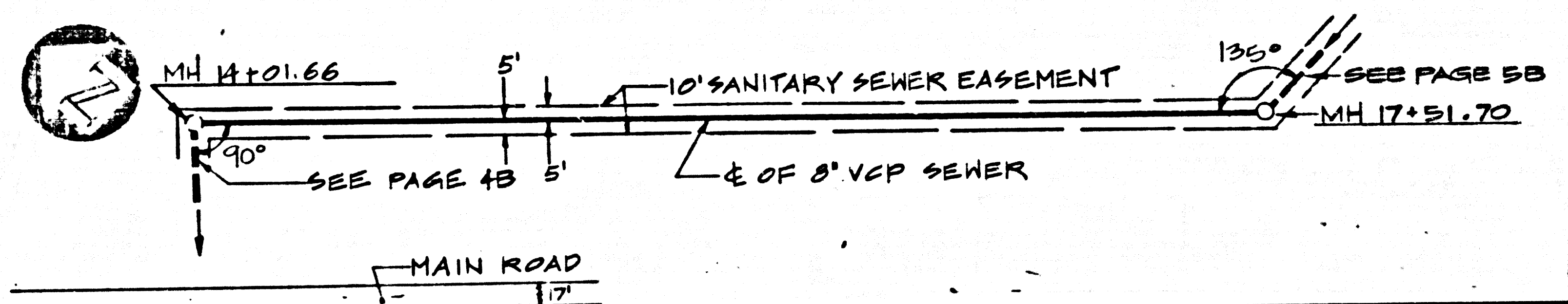
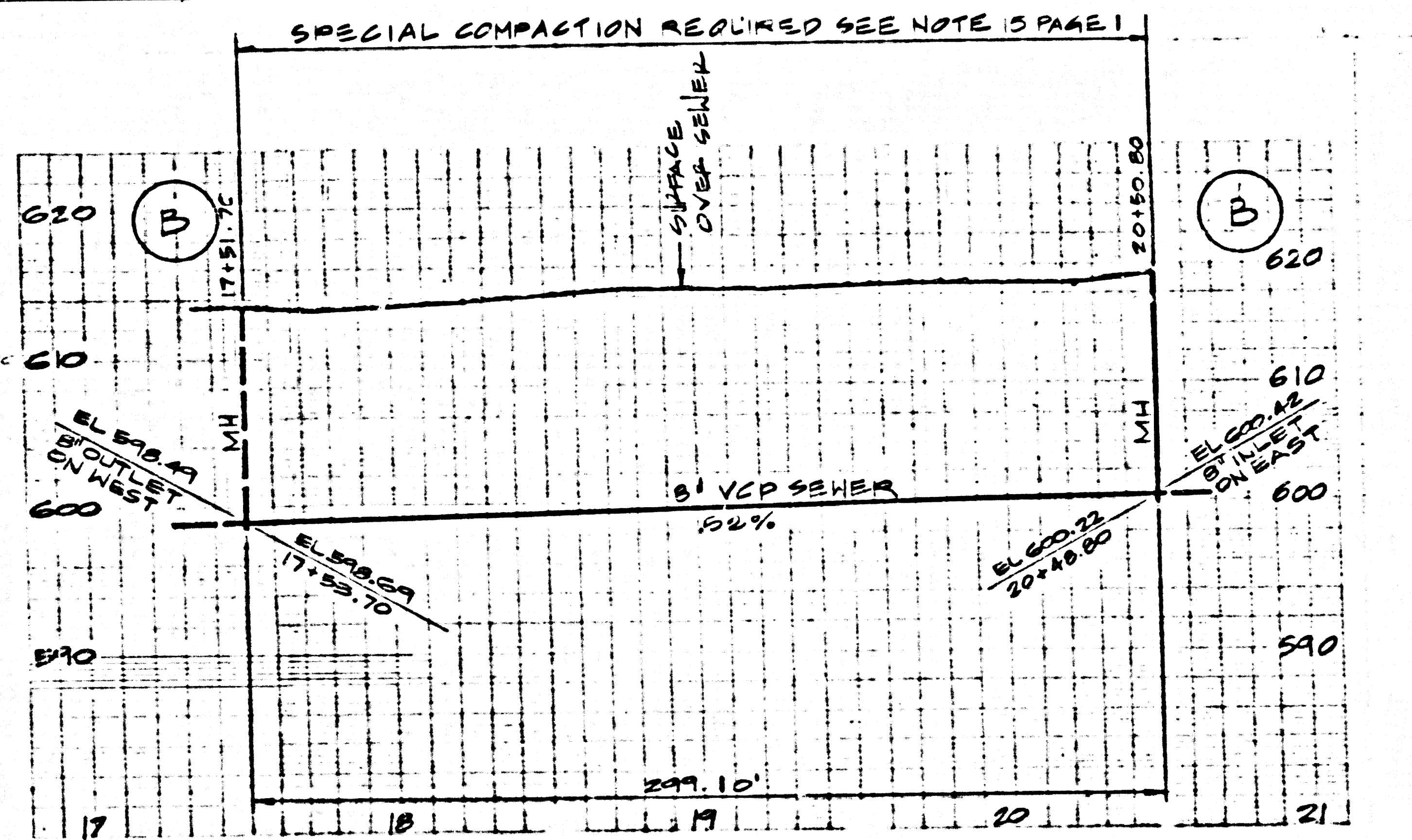
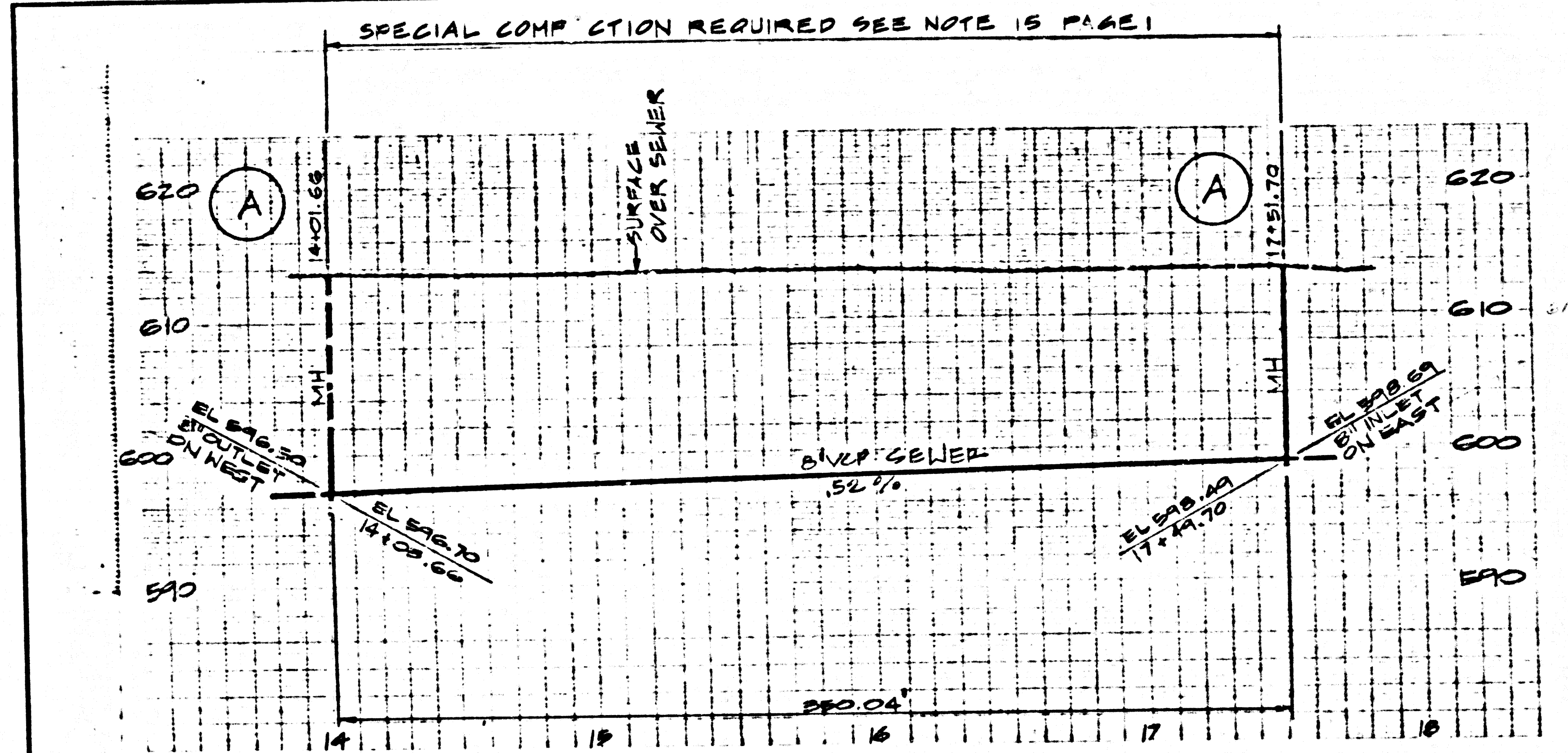
REVIEWED BY *[Signature]* DATE *9/14/87*

NO L.A. COUNTY CONNECTION CHARGES

SEE L.V.M.H.D. FOR SPECIAL CONNECTION CHARGES

DOUBLE SCALE

52120



PC. # 10706 PAGE 5

REVIEWED BY David M. Wang DATE 9/10/87

NO L.A. COUNTY CONNECTION CHARGES

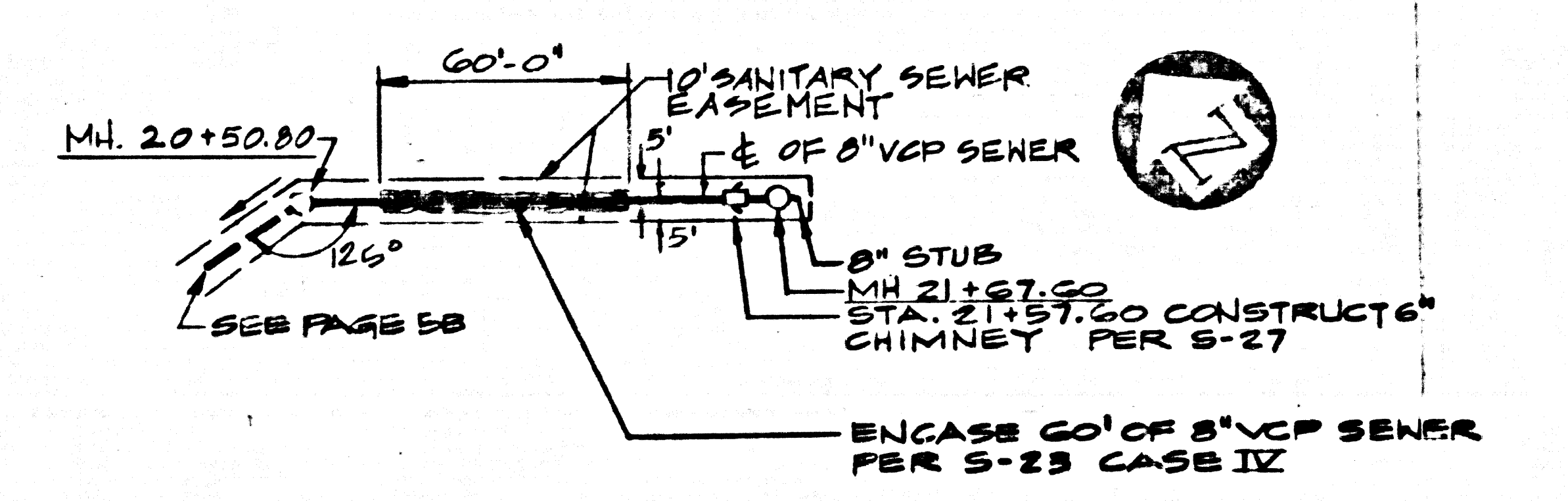
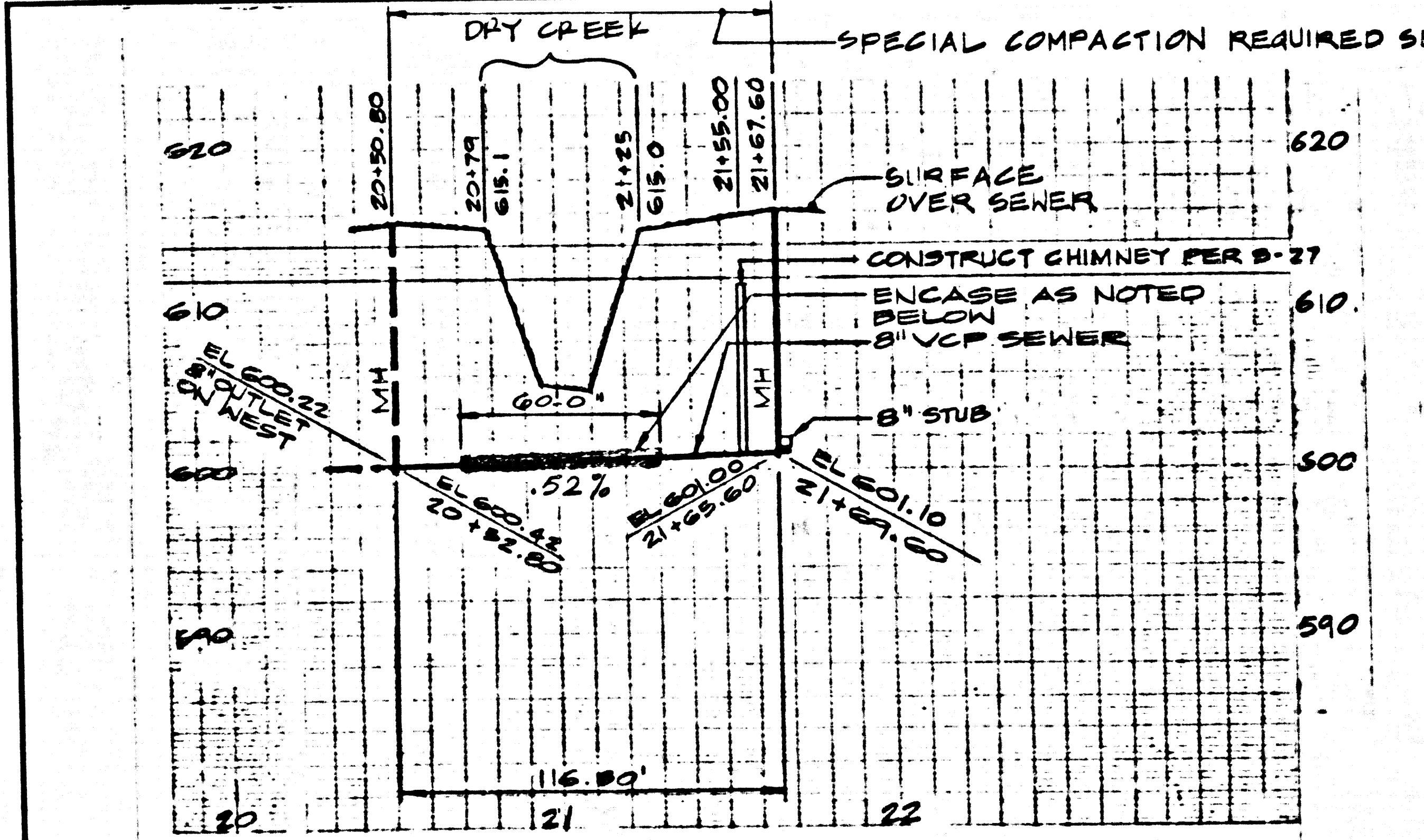
SEE L.V.M.W.D. FOR SPECIAL CONNECTION CHARGES

DOUBLE SCALE

52121

(M)

BC 10106



PC. # 10706 PAGE 6

REVIEWED BY David M. Wang DATE 9/10/87

NO L.A. COUNTY CONNECTION CHARGES

SEE L.V.M.W.D. FOR SPECIAL CONNECTION CHARGES

DOUBLE SCALE

52122