

B.M. CL 4233 ELEV. 1280.68  
 RD. B.M. TAG IN N.C.B. BEAN PARKWAY  
 42 FT. N. & 136 FT. W/O INT. SINKING HILLS  
 RD. TO S.  
 NEWHALL QUAD. 19 83

**DOUBLE SCALE**

REVISION NO. 1 DATE: 7-1-87  
 PAGE 2: REVISED SEWER PROFILE FROM STA. 1+37.00 TO 8+60.36, REVISED PLAN FROM STA. 7+43.84 TO 8+60.36.  
 PAGE 3A: REVISED PLAN AND PROFILE.  
 PAGE 3B: REVISED PLAN AND PROFILE.  
 PAGE 4: REVISED PLAN AND PROFILE.

APPROVED BY: Sandy G. Habel R.C.E. 33134  
 OFFICE OF THE DIRECTOR OF PUBLIC WORKS

**GENERAL NOTES:**

- ELEVATIONS ARE IN FEET ABOVE U.S.C. & G.S. SEA LEVEL DATUM OF 1929.
- NO REVISIONS SHALL BE MADE IN THESE PLANS WITHOUT THE APPROVAL OF THE DIRECTOR OF PUBLIC WORKS.
- NO REPRESENTATIVE OF THE DEPARTMENT OF PUBLIC WORKS WILL SURVEY OR LAY OUT ANY PORTION OF THE WORK.
- GRADES TO WHICH THIS IMPROVEMENT IS TO BE CONSTRUCTED ARE SHOWN ON PLANS AND PROFILES. GRADE POINTS FOR TOP OF CURBS, CENTERLINE OF STREETS, CENTERLINE OF ALLEYS ARE SHOWN BY CIRCLED NUMBERS. ALL POINTS BETWEEN DESIGNATED POINTS THE GRADE SHALL BE ESTABLISHED SO AS TO CONFORM TO A STRAIGHT LINE DRAWN BETWEEN SAID DESIGNATED POINTS.
- THE PRIVATE ENGINEER SHALL FURNISH THE DEPARTMENT OF PUBLIC WORKS WITH GRADE SHEETS AND STATIONING FOR ALL HOUSE LATERALS AND "T" OR "T" BRANCHES AND SHALL PROVIDE STAKES FOR THEM AT THEIR PROPER LOCATIONS WITH STATIONING PLAINLY MARKED. ALL HOUSE LATERALS SHALL BE CONSTRUCTED IN A STRAIGHT ALIGNMENT AT RIGHT ANGLES FROM THE MAIN LINE SEWER EXCEPT AS SHOWN ON THE PLANS. HOUSE LATERALS FROM CHIMNEYS SHALL NOT HAVE AN ANGLE OF LESS THAN 45° WITH THE MAIN LINE SEWER. A 45° CHANGE IN ALIGNMENT SHALL BE REQUESTED IN WRITING BY THE PRIVATE ENGINEER.
- THE PRIVATE ENGINEER SHALL FURNISH THE HOUSE LATERAL DEPTH AT THE PROPERTY LINE BELOW THE TOP OF CURB ELEVATION FOR EACH HOUSE LATERAL ON THE GRADE SHEET.
- BEFORE WORK CAN BE STARTED, THE CONTRACTOR MUST OBTAIN A PERMIT TO EXCAVATE IN COUNTY STREETS FROM THE COUNTY ENGINEER, THE LOS ANGELES DEPARTMENT OF PUBLIC WORKS, DISTRICT OFFICE NO. 10, AND PAY A FEE TO THE DIRECTOR OF PUBLIC WORKS, \$250.00 ADDITIONAL TO LOS ANGELES, CALIFORNIA BOND TO COVER THE COST OF CONSTRUCTION INSPECTION AND RECORD PLANS.
- IF WORK IS TO BE DONE IN A STATE HIGHWAY A PERMIT MUST BE OBTAINED FROM THE STATE OF CALIFORNIA DIVISION OF HIGHWAYS, 120 SOUTH SPRING STREET, LOS ANGELES, CALIFORNIA.
- APPROVAL OF THIS PLAN BY THE COUNTY OF LOS ANGELES DOES NOT CONSTITUTE A REPRESENTATION AS TO THE ACCURACY OF THE LOCATION OF OR THE EXISTENCE OR NON-EXISTENCE OF ANY UNDERGROUND UTILITY PIPE, OR STRUCTURE WITHIN THE LIMITS OF THIS PROJECT. THIS NOTE APPLIES TO ALL PAGES.
- REFER TO SECTION 18.4.1 OF THE STANDARD SPECIFICATIONS REGARDING SAFETY ORDERS.
- PRIOR TO THE ISSUANCE OF THE REQUIRED SEWER CONSTRUCTION PERMIT, THE CONTRACTOR SHALL OBTAIN AND FILE WITH THE DEPARTMENT OF PUBLIC WORKS COPIES OF A PERMIT TO EXCAVATE IN COUNTY STREETS FROM THE COUNTY ENGINEER, AT THE DEPARTMENT OF PUBLIC WORKS, A PERMIT FOR EXCAVATIONS AND TRENCHES FROM THE STATE OF CALIFORNIA, A DIVISION OF INDUSTRIAL SAFETY AND CERTIFICATE OF WORKERS COMPENSATION INSURANCE WITH THE DEPARTMENT OF PUBLIC WORKS, 2250 ANGELES BLVD., LOS ANGELES, CALIFORNIA 90012, AND AS THE CERTIFICATE HOLDER TO BE NOTIFIED 30 DAYS PRIOR TO CANCELLATION OF POLICY.

**CONSTRUCTION NOTES:**

- WORK SHALL BE CONSTRUCTED ACCORDING TO THE STANDARD SPECIFICATIONS FOR PUBLIC WORKS CONSTRUCTION 1988 EDITION WITH THE FOLLOWING SUPPLEMENTS AND OTHER SPECIAL PROVISIONS FOR THE CONSTRUCTION OF SANITARY SEWERS SET OUT HEREIN.
- THE CONTRACTOR SHALL NOTIFY THE CONSTRUCTION DIVISION BY TELEPHONE, 228-8281, AT LEAST TWENTY-FOUR HOURS BEFORE STARTING ANY WORK UNDER THIS CONTRACT.
- HOUSE LATERALS TO BE CONSTRUCTED WITH INVERTS AT PROPERTY LINE 8 FEET BELOW CURB GRADE EXCEPT AS NOTED.
- PIPE OR TEE BRANCHES MAY BE USED FOR CONNECTIONS TO MAINLINE SEWERS EXCEPT AS NOTED.
- ALL STRUCTURES SHALL BE EITHER BRICK MANHOLES PER S-2 OR PRECAST CONCRETE MANHOLES PER S-26, EXCEPT AS NOTED.
- HOUSE LATERALS ON THE PROPERTY LINE OR PROPERTY LINES PRODUCED AT RIGHT ANGLES TO THE SEWER LINE AT THE CENTER LINE OF EACH MANHOLE.
- MANHOLE TOPS IN UNIMPROVED RIGHTS OF WAY TO BE SIX INCHES ABOVE FINISHED GRADE.
- WITRIFIED CLAY PIPE JOINTS SHALL BE TYPE "D" OR "D" PER STANDARD SPECIFICATIONS SECTION 208-2.
- IF POWER POLES ARE WITHIN THREE FEET OF THE SEWER, THE SEWER SHALL BE ENCASED PER S-23. CASE II TWO FEET ON EACH SIDE FROM THE POINT OF INTERFERENCE.
- IF DURING THE COURSE OF CONSTRUCTION IT IS DETERMINED THAT THERE IS LESS THAN FOUR FEET OF COVER OVER THE TOP OF A MAIN LINE OR HOUSE LATERAL OF PIPE WHICH IS INDICATED ON THE PLANS, THE PIPE SHALL BE ENCASED PER S-23. CASE II UNLESS OTHERWISE APPROVED BY THE DIRECTOR OF PUBLIC WORKS.
- ALL JOINTS BETWEEN CAST IRON PIPE AND WITRIFIED CLAY PIPE SHALL BE MADE WITH A RUBBER SLEEVE JOINT, TYPE "D" OR "D" (WITH BUSINESS IF NECESSARY) PER STANDARD SPECIFICATIONS SECTION 208-2.
- SEWERS TO BE TESTED FOR LEAKAGE PER SECTION 208-1 OF THE STANDARD SPECIFICATIONS AND SPECIAL PROVISIONS.
- RESURFACE ALL TRENCHES WITHIN PAVED AREAS TO MEET LOS ANGELES COUNTY PUBLIC WORKS OR CALIFORNIA STATE HIGHWAY REQUIREMENTS IN ACCORDANCE WITH PERMITS.
- FULL COMPLIANCE WITH SECTION 18.4 OF THE STD. SPECIFICATIONS WILL BE REQUIRED FOR BACKFILL IN STREETS. CERTIFICATION OF BACKFILL COMPLETION AND SAID EQUIVALENTS BY A QUALIFIED REGISTERED LABORATORY SHALL BE PROVIDED BY THE PERMITTEE PRIOR TO THE ISSUANCE OF A CERTIFICATE OF PARTIAL ACCEPTANCE.
- SPECIAL BACKFILL INVESTIGATION OBSERVATION IN BACKFILL TRENCH AND REPLACE OTHER BATHS SO AS TO ACHIEVE THE NATURAL OR FINISHED GRADES AND SLOPES SHOWN ON THE GRADING PLAN APPROVED FOR THIS DEVELOPMENT BY THE LAND DEVELOPMENT DIVISION OF THE COUNTY OF LOS ANGELES. SPECIAL BACKFILL INVESTIGATION SHALL BE CONDUCTED TO A MINIMUM OF 80% OF MAXIMUM DENSITY PER ASTM D 1557 METHOD OF TEST OR AT A MODIFIED ACCEPTABLE CERTIFICATION SHALL BE SUBMITTED TO THE CONSTRUCTION DIVISION.

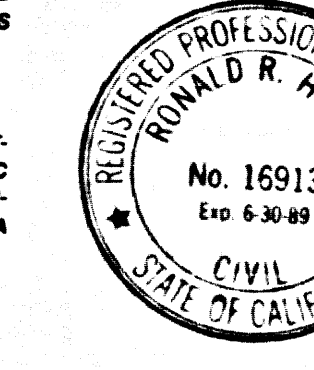
PROFILE, ALIGNMENT AND GRADE OF  
**SANITARY SEWERS**  
 TO BE CONSTRUCTED IN  
**TRACT NO. 44457**  
**PRIVATE CONTRACT NO. 10708**  
 A-47  
 2 SHEETS; 4 PAGES

SCALE: VERT. 1"=8'  
 HORIZ. 1"=40'

DATE: JUNE, 1987

PREPARED IN THE OFFICES OF  
 STAUD ENGINEERING ASSOCIATES  
 15730 BURBANK BLVD. VAN NUYS  
 CALIFORNIA 91411 (818) 787-8550

BY: Thomas A. Tidemanson R.C.E. 16913  
 REG. C.E. NO. 16913



THE FOLLOWING LATEST REVISED STANDARD PLANS ON FILE IN THE OFFICE OF THE DEPARTMENT OF PUBLIC WORKS SHALL APPLY IN THE CONSTRUCTION OF THIS PROJECT:

LEGEND	S-1
MINIMUM PUBLIC SAFETY REQUIREMENTS	S-2
BRICK SEWER, MANHOLES	S-3
STANDARD MANHOLE STEP	S-17
BEDDING FOR SEWER PIPE	S-21
CHOKING AND ENCASEMENT	S-23
WYE OR TEE SUPPORT	S-26
ALLOWABLE TRENCH WIDTHS	S-33
LOADING MANHOLE FRAMES AND COVER	S-38
NON-REINFORCED PRECAST CONCRETE SEWER MANHOLES	S-39

COUNTY OF LOS ANGELES, CALIFORNIA

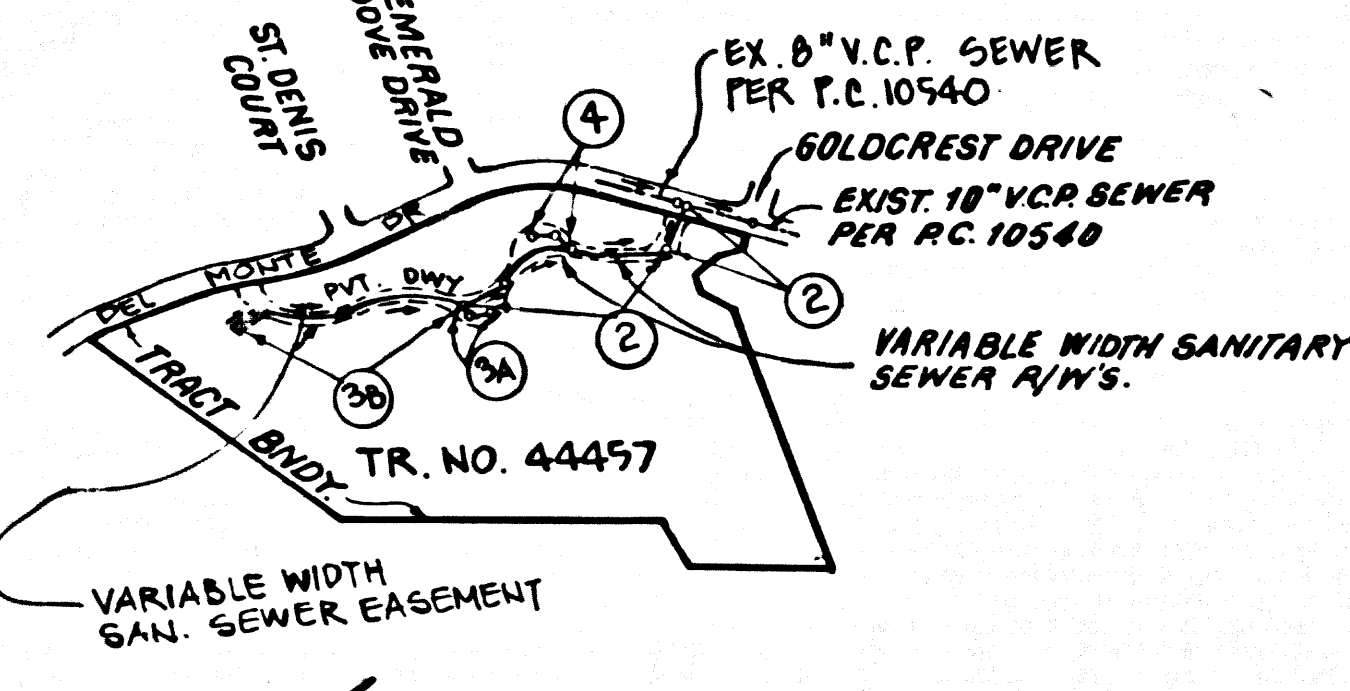
THOMAS A. TIDEMANSON  
 DIRECTOR OF PUBLIC WORKS

CHARLES W. CARRY  
 CHIEF ENGINEER

APPROVED: Charles W. Carry 7/27/87 (DATE)  
 APPROVED: Thomas A. Tidemanson 7/27/87 (DATE)

CHECKED: John J. ... 7/24/87 (DATE)  
 REG. C.E. NO. 16871

SANTA CLARITA VALLEY BLDG. DIST. 82



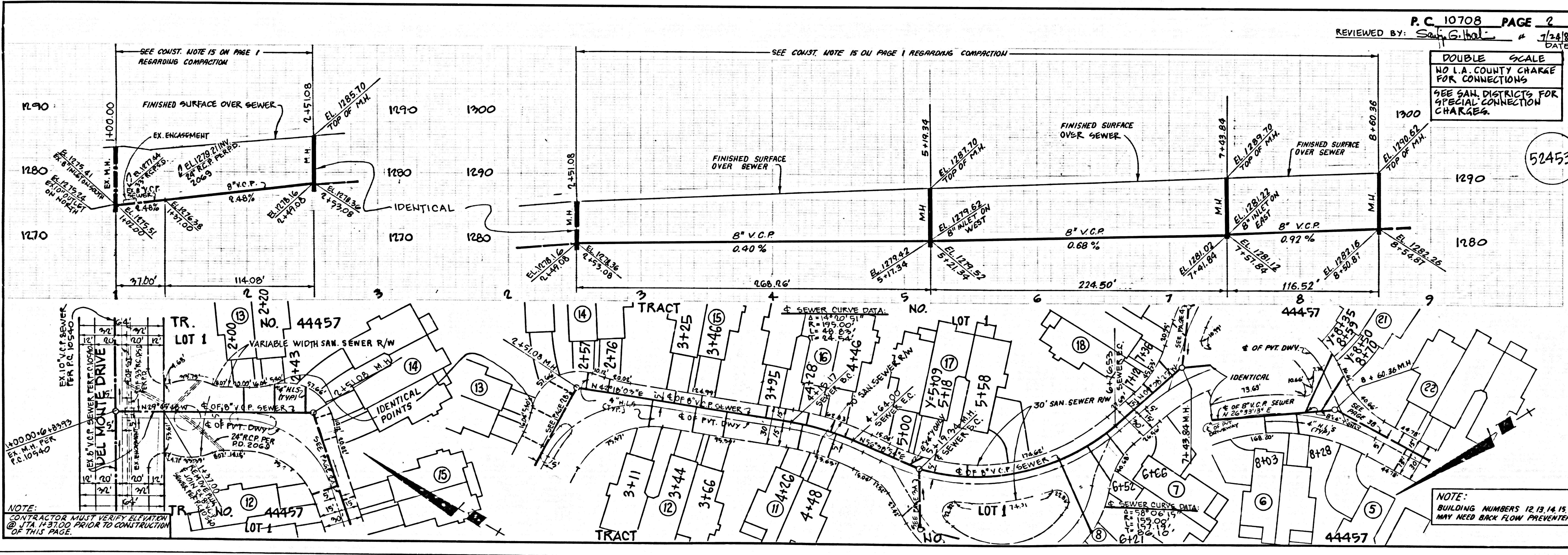
**INDEX MAP**  
 SCALE: 1"=600'  
 P.C. 10708  
 TRACT NO. 44457

NO CONNECTION FOR THE DISPOSAL OF INDUSTRIAL WASTES SHALL BE MADE TO SEWERS SHOWN ON THESE DRAWINGS UNTIL A PERMIT FOR INDUSTRIAL WASTEWATER DISCHARGE HAS BEEN ISSUED BY THE SANITATION DISTRICTS FOR SAID CONNECTION.

BEFORE BREAKING INTO OR CONSTRUCTION ON A COUNTY SANITATION DISTRICT SEWER AND PRIOR TO FINAL ACCEPTANCE OF THE PROJECT, SANITATION DISTRICT INSPECTOR SHALL BE NOTIFIED BY PHONE (818) 962-8605 SO THAT REQUIRED INSPECTION CAN BE MADE.

ISSUE NO HOUSE CONNECTION PERMITS UNTIL OUTLET SEWER PER F.O. 10540 IS ACCEPTED FOR PUBLIC USE BY THE COUNTY OF LOS ANGELES

NOTE: NUMBERS IN CIRCLES INDICATE PAGE NUMBERS.

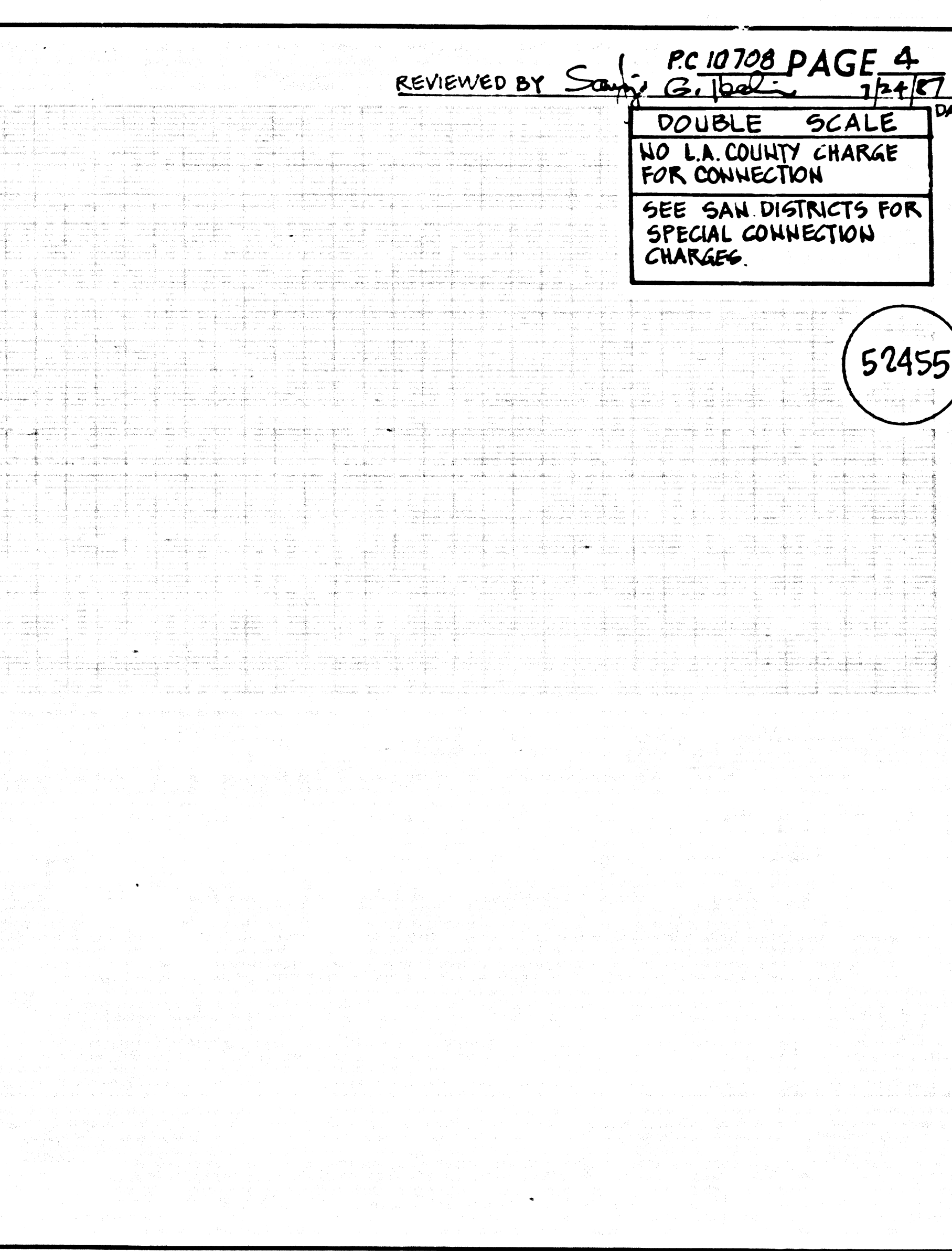
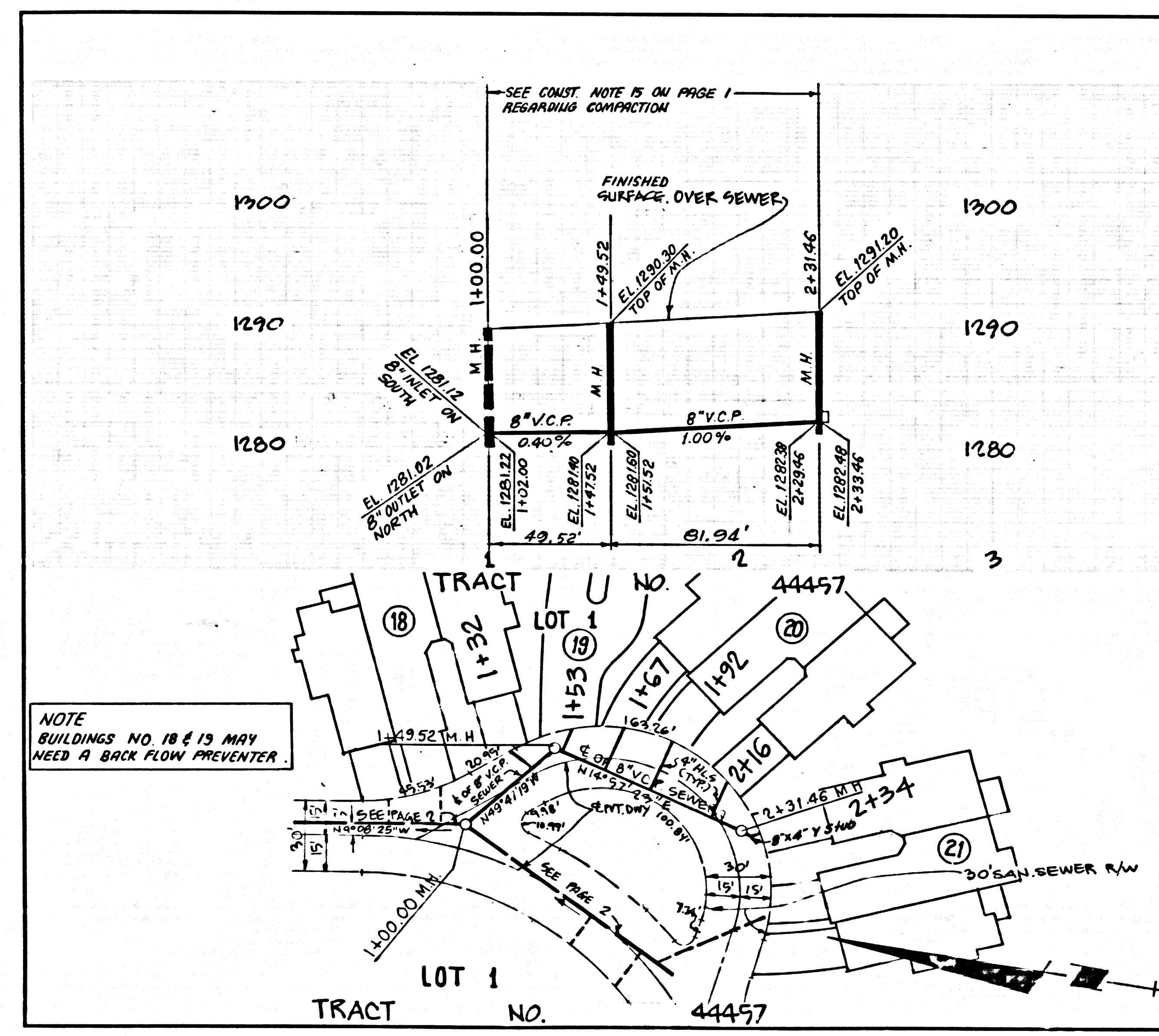
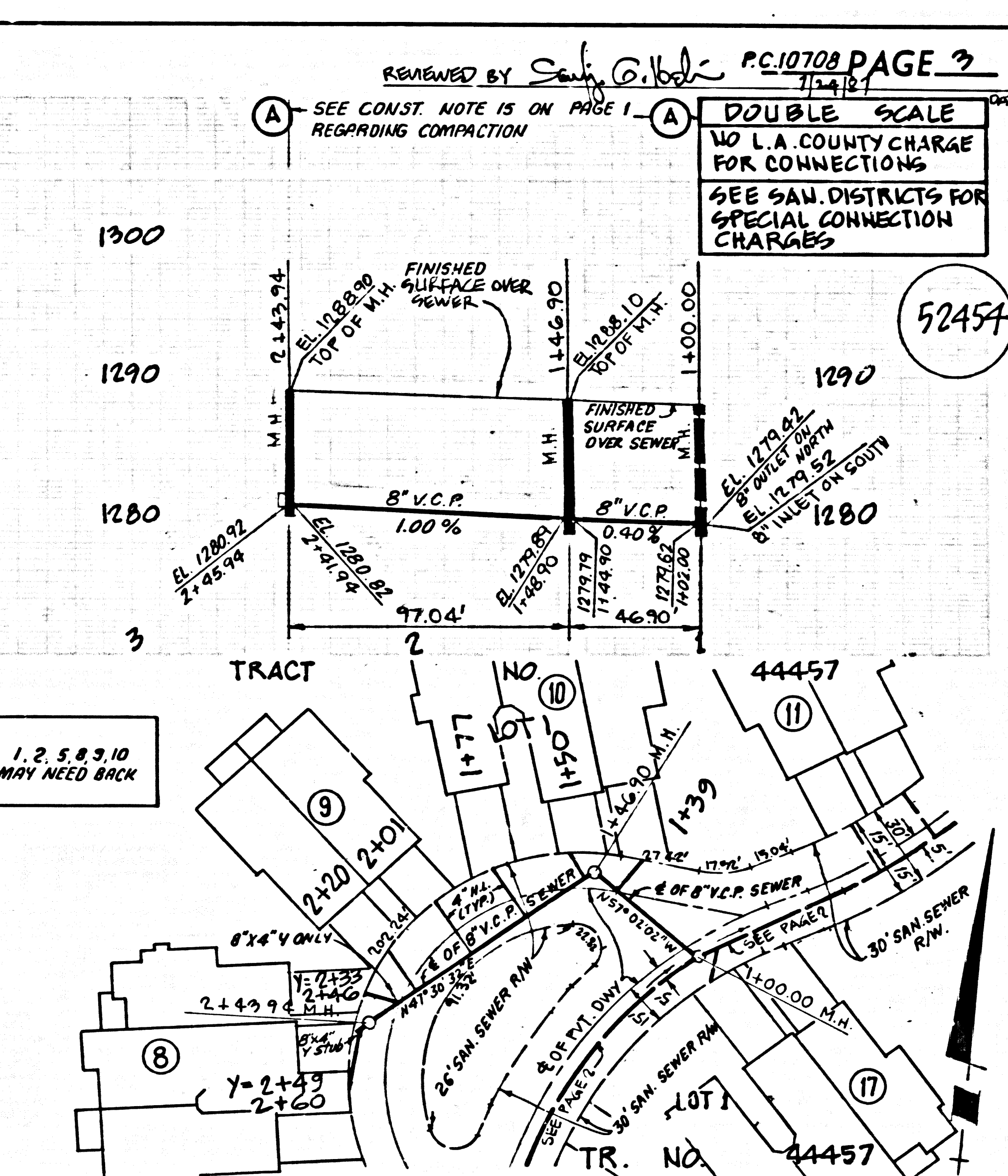
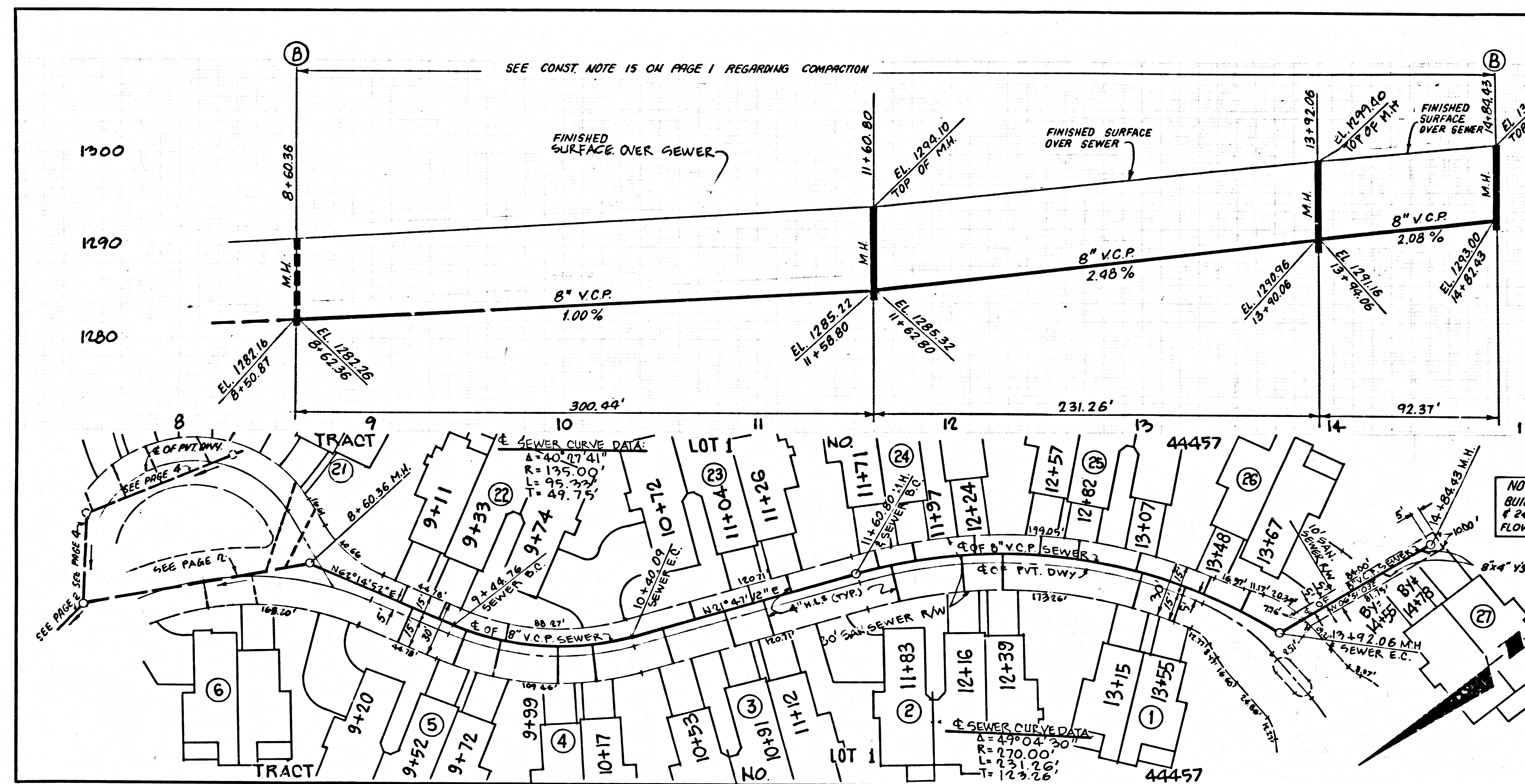


P.C. 10708 PAGE 2  
 REVIEWED BY: Sandy G. Habel # 72487  
 DATE: 7/24/87

**DOUBLE SCALE**  
 NO I.A. COUNTY CHARGE FOR CONNECTIONS  
 SEE SAN. DISTRICTS FOR SPECIAL CONNECTION CHARGES.

NOTE:  
 BUILDING NUMBERS 12, 13, 14, 15, 16 & 17 MAY NEED BACK FLOW PREVENTERS.

8070129  
 TRACT NO. 44457



REVIEWED BY *Sally G. Baker* PC 10708 PAGE 3  
DATE 7/1/87

DOUBLE SCALE  
NO L.A. COUNTY CHARGE FOR CONNECTIONS  
SEE SAN. DISTRICTS FOR SPECIAL CONNECTION CHARGES

52454

REVIEWED BY *Sally G. Baker* PC 10708 PAGE 4  
DATE 7/1/87

DOUBLE SCALE  
NO L.A. COUNTY CHARGE FOR CONNECTIONS  
SEE SAN. DISTRICTS FOR SPECIAL CONNECTION CHARGES

52455

80701.09 REVISION TRACT