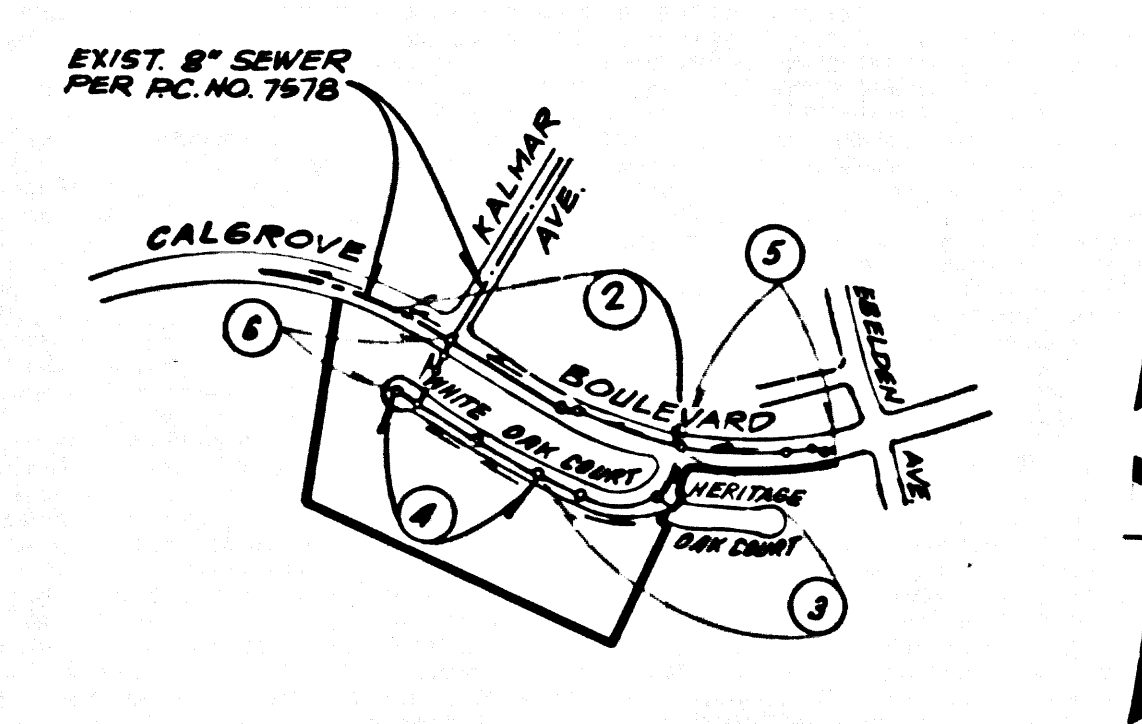


CL 4530 EIO 1317 897
 SPK IN NCD 2 FT EIO BCR @ NE COR
 WILEY CVM RD & CL CAMERWELL ST
 18 FT N & 12 FT EIO Q/L INT
 NEWHALL QUAD N-83

DOUBLE SCALE

CONSTRUCTION NOTES:

1. ALL APPROVALS MUST BE OBTAINED FOR CONNECTIONS TO EXISTING SEWERS.
2. ALL APPROVALS MUST BE OBTAINED FOR CONNECTIONS TO EXISTING SEWERS.
3. ALL APPROVALS MUST BE OBTAINED FOR CONNECTIONS TO EXISTING SEWERS.
4. ALL APPROVALS MUST BE OBTAINED FOR CONNECTIONS TO EXISTING SEWERS.
5. ALL APPROVALS MUST BE OBTAINED FOR CONNECTIONS TO EXISTING SEWERS.
6. ALL APPROVALS MUST BE OBTAINED FOR CONNECTIONS TO EXISTING SEWERS.
7. ALL APPROVALS MUST BE OBTAINED FOR CONNECTIONS TO EXISTING SEWERS.
8. ALL APPROVALS MUST BE OBTAINED FOR CONNECTIONS TO EXISTING SEWERS.
9. ALL APPROVALS MUST BE OBTAINED FOR CONNECTIONS TO EXISTING SEWERS.
10. ALL APPROVALS MUST BE OBTAINED FOR CONNECTIONS TO EXISTING SEWERS.
11. ALL APPROVALS MUST BE OBTAINED FOR CONNECTIONS TO EXISTING SEWERS.
12. ALL APPROVALS MUST BE OBTAINED FOR CONNECTIONS TO EXISTING SEWERS.
13. ALL APPROVALS MUST BE OBTAINED FOR CONNECTIONS TO EXISTING SEWERS.
14. ALL APPROVALS MUST BE OBTAINED FOR CONNECTIONS TO EXISTING SEWERS.
15. ALL APPROVALS MUST BE OBTAINED FOR CONNECTIONS TO EXISTING SEWERS.
16. ALL APPROVALS MUST BE OBTAINED FOR CONNECTIONS TO EXISTING SEWERS.
17. ALL APPROVALS MUST BE OBTAINED FOR CONNECTIONS TO EXISTING SEWERS.
18. ALL APPROVALS MUST BE OBTAINED FOR CONNECTIONS TO EXISTING SEWERS.
19. ALL APPROVALS MUST BE OBTAINED FOR CONNECTIONS TO EXISTING SEWERS.
20. ALL APPROVALS MUST BE OBTAINED FOR CONNECTIONS TO EXISTING SEWERS.
21. ALL APPROVALS MUST BE OBTAINED FOR CONNECTIONS TO EXISTING SEWERS.
22. ALL APPROVALS MUST BE OBTAINED FOR CONNECTIONS TO EXISTING SEWERS.
23. ALL APPROVALS MUST BE OBTAINED FOR CONNECTIONS TO EXISTING SEWERS.
24. ALL APPROVALS MUST BE OBTAINED FOR CONNECTIONS TO EXISTING SEWERS.
25. ALL APPROVALS MUST BE OBTAINED FOR CONNECTIONS TO EXISTING SEWERS.
26. ALL APPROVALS MUST BE OBTAINED FOR CONNECTIONS TO EXISTING SEWERS.
27. ALL APPROVALS MUST BE OBTAINED FOR CONNECTIONS TO EXISTING SEWERS.



INDEX MAP
 PG 10713
 TR. NO. 44321
 SCALE: 1"=600'

REVISION No. 1 DATE: 3-08-88
 PAGE 2 - Revised Alignment and Profile from Sta. 4+36.69 to Sta. 7+25.59 & Curve Data
 PAGE 3 - Relocated M.N. 22 FT. NORTH AND EXTENDED PROFILE
 PAGE 5 - Revised Alignment and Profile from Sta. 7+76.59 to Sta. 8+37.81
 APPROVED: *[Signature]* 9-19-88
 OFFICE OF DEPT. OF PUBLIC WORKS

NO CONNECTION FOR THE DISPOSAL OF INDUSTRIAL WASTES SHALL BE MADE TO SEWERS SHOWN ON THESE DRAWINGS UNTIL A PERMIT FOR INDUSTRIAL WASTEWATER DISCHARGE HAS BEEN ISSUED BY THE SANITATION DISTRICTS FOR SAID CONNECTION.
 BEFORE BREAKING INTO OR CONSTRUCTION ON A COUNTY SANITATION DISTRICT SEWER AND PRIOR TO FINAL ACCEPTANCE OF THE PROJECT, SANITATION DISTRICT INSPECTOR SHALL BE NOTIFIED BY PHONE (818) 962-8605 SO THAT REQUIRED INSPECTION CAN BE MADE.

GENERAL NOTES:

1. ELEVATIONS ARE IN FEET ABOVE U.S. & T. SEA LEVEL DATUM OF 1929.
2. ALL APPROVALS MUST BE OBTAINED FOR CONNECTIONS TO EXISTING SEWERS.
3. ALL APPROVALS MUST BE OBTAINED FOR CONNECTIONS TO EXISTING SEWERS.
4. ALL APPROVALS MUST BE OBTAINED FOR CONNECTIONS TO EXISTING SEWERS.
5. ALL APPROVALS MUST BE OBTAINED FOR CONNECTIONS TO EXISTING SEWERS.
6. ALL APPROVALS MUST BE OBTAINED FOR CONNECTIONS TO EXISTING SEWERS.
7. ALL APPROVALS MUST BE OBTAINED FOR CONNECTIONS TO EXISTING SEWERS.
8. ALL APPROVALS MUST BE OBTAINED FOR CONNECTIONS TO EXISTING SEWERS.
9. ALL APPROVALS MUST BE OBTAINED FOR CONNECTIONS TO EXISTING SEWERS.
10. ALL APPROVALS MUST BE OBTAINED FOR CONNECTIONS TO EXISTING SEWERS.
11. ALL APPROVALS MUST BE OBTAINED FOR CONNECTIONS TO EXISTING SEWERS.
12. ALL APPROVALS MUST BE OBTAINED FOR CONNECTIONS TO EXISTING SEWERS.
13. ALL APPROVALS MUST BE OBTAINED FOR CONNECTIONS TO EXISTING SEWERS.
14. ALL APPROVALS MUST BE OBTAINED FOR CONNECTIONS TO EXISTING SEWERS.
15. ALL APPROVALS MUST BE OBTAINED FOR CONNECTIONS TO EXISTING SEWERS.
16. ALL APPROVALS MUST BE OBTAINED FOR CONNECTIONS TO EXISTING SEWERS.
17. ALL APPROVALS MUST BE OBTAINED FOR CONNECTIONS TO EXISTING SEWERS.
18. ALL APPROVALS MUST BE OBTAINED FOR CONNECTIONS TO EXISTING SEWERS.
19. ALL APPROVALS MUST BE OBTAINED FOR CONNECTIONS TO EXISTING SEWERS.
20. ALL APPROVALS MUST BE OBTAINED FOR CONNECTIONS TO EXISTING SEWERS.
21. ALL APPROVALS MUST BE OBTAINED FOR CONNECTIONS TO EXISTING SEWERS.
22. ALL APPROVALS MUST BE OBTAINED FOR CONNECTIONS TO EXISTING SEWERS.
23. ALL APPROVALS MUST BE OBTAINED FOR CONNECTIONS TO EXISTING SEWERS.
24. ALL APPROVALS MUST BE OBTAINED FOR CONNECTIONS TO EXISTING SEWERS.
25. ALL APPROVALS MUST BE OBTAINED FOR CONNECTIONS TO EXISTING SEWERS.
26. ALL APPROVALS MUST BE OBTAINED FOR CONNECTIONS TO EXISTING SEWERS.
27. ALL APPROVALS MUST BE OBTAINED FOR CONNECTIONS TO EXISTING SEWERS.

CONSTRUCTION NOTES:

1. ALL APPROVALS MUST BE OBTAINED FOR CONNECTIONS TO EXISTING SEWERS.
2. ALL APPROVALS MUST BE OBTAINED FOR CONNECTIONS TO EXISTING SEWERS.
3. ALL APPROVALS MUST BE OBTAINED FOR CONNECTIONS TO EXISTING SEWERS.
4. ALL APPROVALS MUST BE OBTAINED FOR CONNECTIONS TO EXISTING SEWERS.
5. ALL APPROVALS MUST BE OBTAINED FOR CONNECTIONS TO EXISTING SEWERS.
6. ALL APPROVALS MUST BE OBTAINED FOR CONNECTIONS TO EXISTING SEWERS.
7. ALL APPROVALS MUST BE OBTAINED FOR CONNECTIONS TO EXISTING SEWERS.
8. ALL APPROVALS MUST BE OBTAINED FOR CONNECTIONS TO EXISTING SEWERS.
9. ALL APPROVALS MUST BE OBTAINED FOR CONNECTIONS TO EXISTING SEWERS.
10. ALL APPROVALS MUST BE OBTAINED FOR CONNECTIONS TO EXISTING SEWERS.
11. ALL APPROVALS MUST BE OBTAINED FOR CONNECTIONS TO EXISTING SEWERS.
12. ALL APPROVALS MUST BE OBTAINED FOR CONNECTIONS TO EXISTING SEWERS.
13. ALL APPROVALS MUST BE OBTAINED FOR CONNECTIONS TO EXISTING SEWERS.
14. ALL APPROVALS MUST BE OBTAINED FOR CONNECTIONS TO EXISTING SEWERS.
15. ALL APPROVALS MUST BE OBTAINED FOR CONNECTIONS TO EXISTING SEWERS.
16. ALL APPROVALS MUST BE OBTAINED FOR CONNECTIONS TO EXISTING SEWERS.
17. ALL APPROVALS MUST BE OBTAINED FOR CONNECTIONS TO EXISTING SEWERS.
18. ALL APPROVALS MUST BE OBTAINED FOR CONNECTIONS TO EXISTING SEWERS.
19. ALL APPROVALS MUST BE OBTAINED FOR CONNECTIONS TO EXISTING SEWERS.
20. ALL APPROVALS MUST BE OBTAINED FOR CONNECTIONS TO EXISTING SEWERS.
21. ALL APPROVALS MUST BE OBTAINED FOR CONNECTIONS TO EXISTING SEWERS.
22. ALL APPROVALS MUST BE OBTAINED FOR CONNECTIONS TO EXISTING SEWERS.
23. ALL APPROVALS MUST BE OBTAINED FOR CONNECTIONS TO EXISTING SEWERS.
24. ALL APPROVALS MUST BE OBTAINED FOR CONNECTIONS TO EXISTING SEWERS.
25. ALL APPROVALS MUST BE OBTAINED FOR CONNECTIONS TO EXISTING SEWERS.
26. ALL APPROVALS MUST BE OBTAINED FOR CONNECTIONS TO EXISTING SEWERS.
27. ALL APPROVALS MUST BE OBTAINED FOR CONNECTIONS TO EXISTING SEWERS.

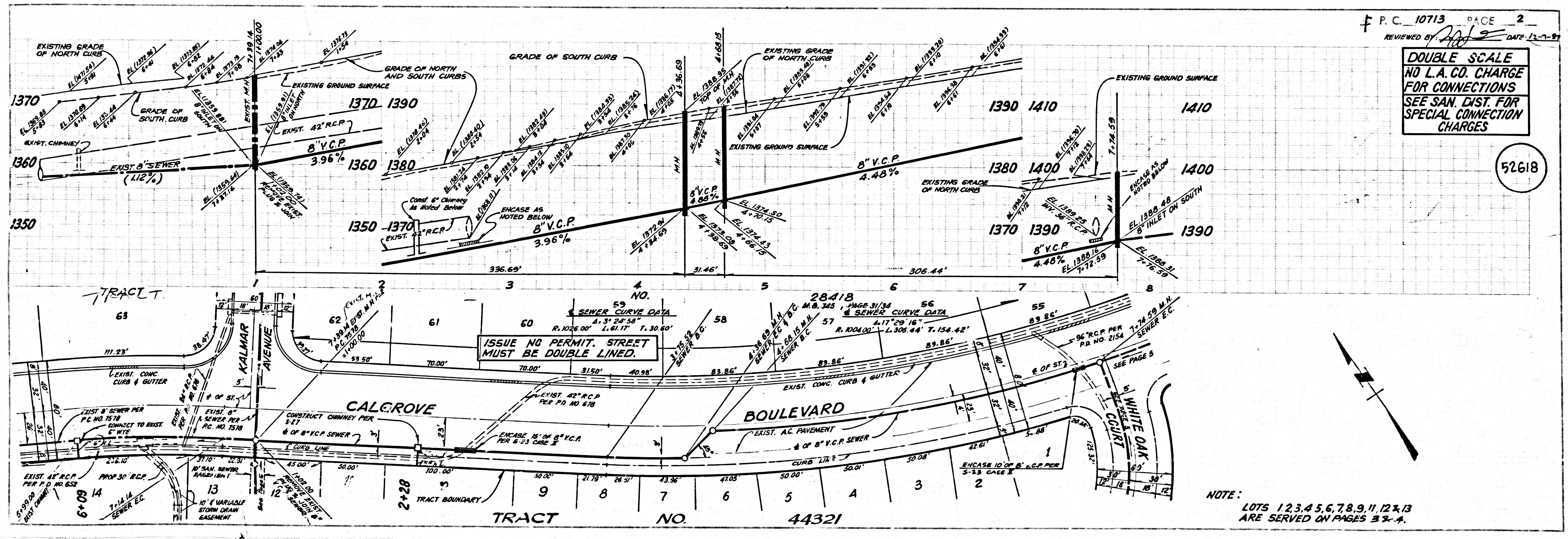
PROFILE, ALIGNMENT AND GRADE OF
SANITARY SEWERS
 TO BE CONSTRUCTED IN

TRACT NO. 44321
 PRIVATE CONTRACT NO. 10713
 INDEX A-26, B4

3 SHEETS, 6 PAGES
 MAY 1917
 ENGINEERING SERVICE CORPORATION
 1215 C.E. No. 13095

ITEM	QUANTITY	COUNTY
1. 8" V.C.P.	1.2	LOS ANGELES
2. 8" V.C.P.	1.2	LOS ANGELES
3. 8" V.C.P.	1.2	LOS ANGELES
4. 8" V.C.P.	1.2	LOS ANGELES
5. 8" V.C.P.	1.2	LOS ANGELES
6. 8" V.C.P.	1.2	LOS ANGELES
7. 8" V.C.P.	1.2	LOS ANGELES
8. 8" V.C.P.	1.2	LOS ANGELES
9. 8" V.C.P.	1.2	LOS ANGELES
10. 8" V.C.P.	1.2	LOS ANGELES
11. 8" V.C.P.	1.2	LOS ANGELES
12. 8" V.C.P.	1.2	LOS ANGELES
13. 8" V.C.P.	1.2	LOS ANGELES
14. 8" V.C.P.	1.2	LOS ANGELES
15. 8" V.C.P.	1.2	LOS ANGELES
16. 8" V.C.P.	1.2	LOS ANGELES
17. 8" V.C.P.	1.2	LOS ANGELES
18. 8" V.C.P.	1.2	LOS ANGELES
19. 8" V.C.P.	1.2	LOS ANGELES
20. 8" V.C.P.	1.2	LOS ANGELES
21. 8" V.C.P.	1.2	LOS ANGELES
22. 8" V.C.P.	1.2	LOS ANGELES
23. 8" V.C.P.	1.2	LOS ANGELES
24. 8" V.C.P.	1.2	LOS ANGELES
25. 8" V.C.P.	1.2	LOS ANGELES
26. 8" V.C.P.	1.2	LOS ANGELES
27. 8" V.C.P.	1.2	LOS ANGELES

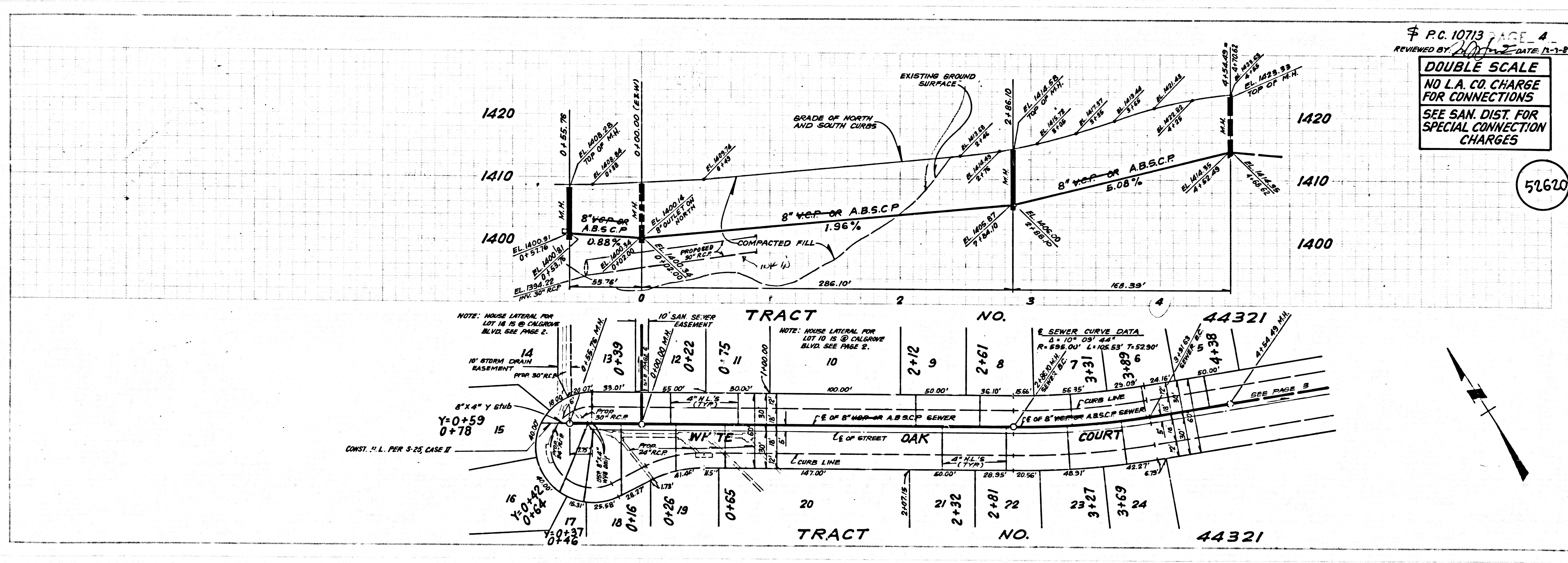
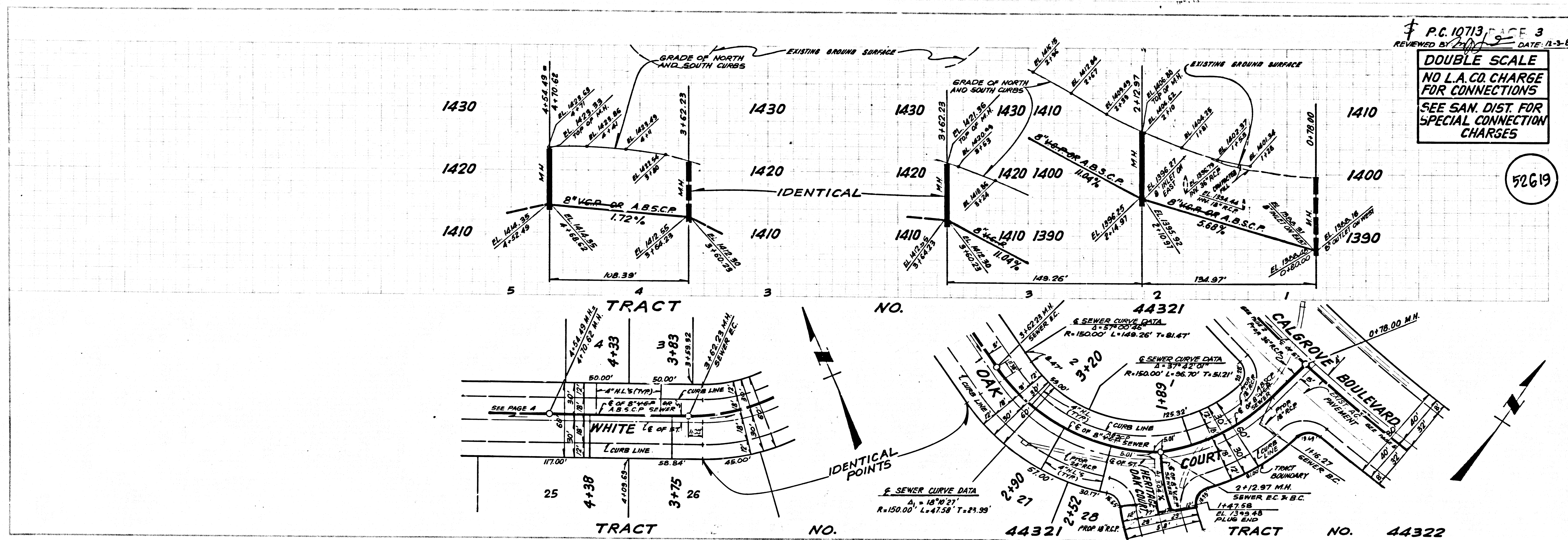
COUNTY OF LOS ANGELES, CALIFORNIA
 THOMAS A. TIDMANN, DIRECTOR OF PUBLIC WORKS
 APPROVED: *[Signature]* 12-24-87
 REVIEWED BY: *[Signature]* 12-3-87
 DATE: 12-24-87
 DATE: 12-3-87
 APPROVAL OF THIS PLAN BY THE LAND DEVELOPMENT DIVISION IS BASED ON A REVIEW BY AN ENGINEERING CONSULTANT UNDER CONTRACT WITH THE COUNTY OF LOS ANGELES.



P.C. 10713 PAGE 2
 REVISION BY: *[Signature]* DATE: 12-2-87

DOUBLE SCALE
 NO L.A. CO. CHARGE FOR CONNECTIONS
 SEE SAN. DIST. FOR SPECIAL CONNECTION CHARGES

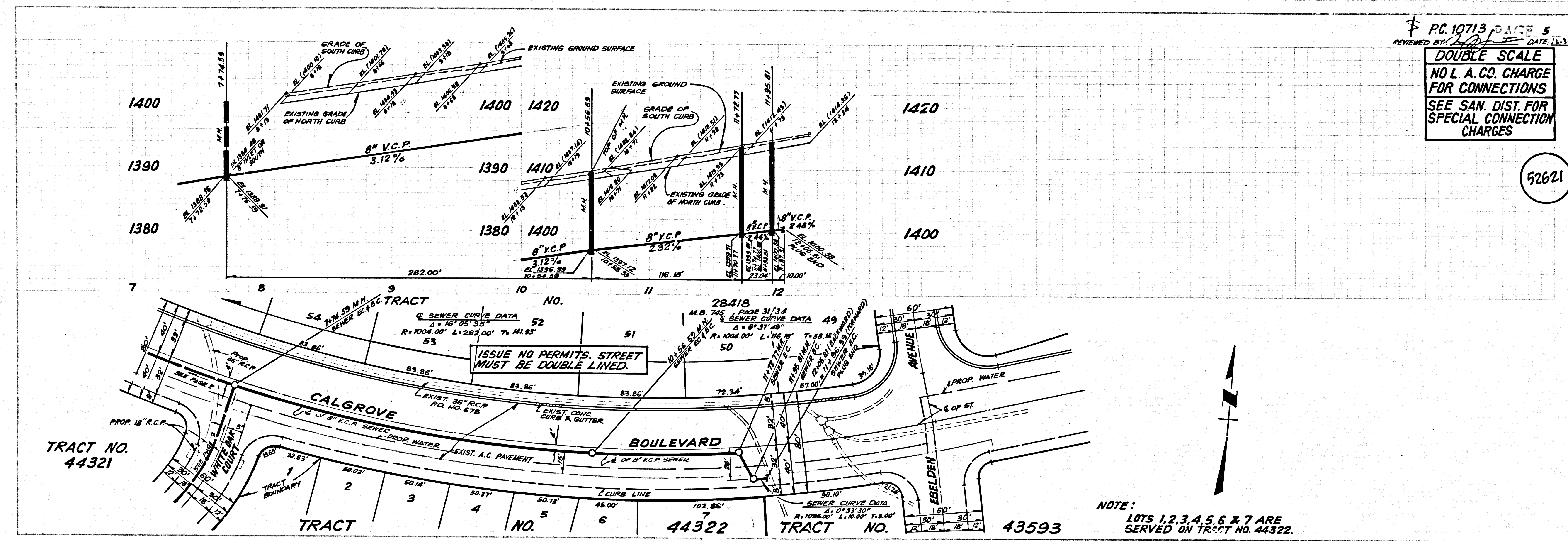
NOTE: LOTS 1, 2, 3, 4, 5, 6, 7, 8, 9, 11, 12, 13 ARE SERVED ON PAGES 3 & 4.



57619

57620

E1701 CA 15544 SW TRACT

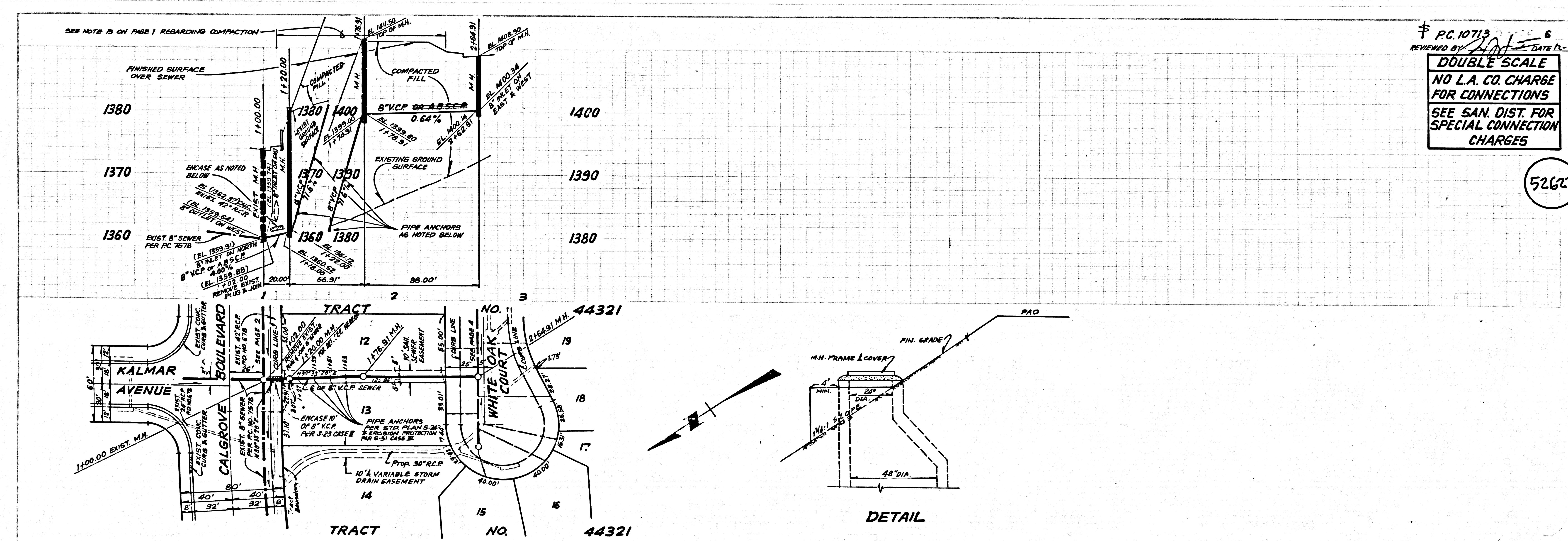


5

52621

51701 SA

15544 ON TRACT



6

52622