

DOUBLE SCALE

REVISION NO. 1 DATE: 5-28-88
 PAGE 6: ADDED 6" H.L. TO CHIMNEY AT STA. 68+51.00 FOR LOT 15
 APPROVED BY: *Sally G. Hal* R.C.E. 23154
 OFFICE OF THE DIRECTOR OF PUBLIC WORKS

REVISION NO. 2 DATE:
 PAGE 6: REVISED INV. EL. 6" CHIMNEY @ STA. 68+03.00 OF LOT 15
 APPROVED BY: *Sally G. Hal* R.C.E. 23134
 OFFICE OF THE DIRECTOR OF PUBLIC WORKS

NO CONNECTION FOR THE DISPOSAL OF INDUSTRIAL WASTES SHALL BE MADE TO SEWERS SHOWN ON THESE DRAWINGS UNTIL A PERMIT FOR INDUSTRIAL WASTEWATER DISCHARGE HAS BEEN ISSUED BY THE SANITATION DISTRICTS FOR SAID CONNECTION.

BEFORE BREAK, AS NOTED ON CONSTRUCTION ON A COUNTY SANITATION DISTRICT SEWER AND PRIOR TO FINAL ACCEPTANCE OF THE PROJECT, SANITATION DISTRICT INSPECTOR SHALL BE NOTIFIED BY PHONE (818) 962-8605 SO THAT REQUIRED INSPECTION CAN BE MADE.

ISSUE NO H.L. PERMITS UNTIL OUTLET SEWER P.C. 10513 IS ACCEPTED FOR PUBLIC USE BY THE COUNTY OF LOS ANGELES.

ISSUE NO CURB PERMITS UNTIL SAN. DIST. OUTLET SEWER IS BUILT & ACCEPTED FOR PUBLIC USE.

INDEX MAP
 SCALE 1"=600'
 P.C. NO. 10720
 P.M. NO. 17502

NOTE: NUMBER IN CIRCLE INDICATES PAGE NUMBER

GENERAL NOTES:

- ELEVATIONS ARE IN FEET ABOVE U.S.C. & G.S. SEA LEVEL DATUM OF 1929.
- NO REVISIONS SHALL BE MADE IN THESE DRAWINGS WITHOUT THE APPROVAL OF THE DIRECTOR OF PUBLIC WORKS.
- ALL REPRESENTATIVE OF THE DEPARTMENT OF PUBLIC WORKS WILL SURVEY OR LAY OUT ANY PORTION OF THE WORK.
- GRADES TO WHICH THIS IMPROVEMENT IS TO BE CONSTRUCTED ARE SHOWN ON PLANS AND PROFILES. POINTS FOR TOP OF CURB, CENTER LINE OF STREETS OR CENTER LINE OF ALLEYS ARE SHOWN BY CIRCLES ON PROFILES. AT ALL POINTS BETWEEN DESIGNATED POINTS THE GRADE SHALL BE ESTABLISHED SO AS TO CONFORM TO A STRAIGHT LINE DRAWN BETWEEN SAID DESIGNATED POINTS.
- THE PRIVATE ENGINEER SHALL FURNISH THE DEPARTMENT OF PUBLIC WORKS WITH GRADE SHEETS AND STATIONING FOR ALL HOUSE LATERALS AND ON-TOP BRANCHES AND SHALL PROVIDE STAKES FOR THEM AT THEIR PROPER LOCATIONS WITH STATIONING PLAINLY MARKED. ALL HOUSE LATERALS SHALL BE CONSTRUCTED TO A STRAIGHT ALIGNMENT AT RIGHT ANGLES FROM THE MAIN LINE SEWER EXCEPT AS SHOWN ON THE PLANS. HOUSE LATERALS FROM CHIMNEYS SHALL NOT HAVE AN ANGLE OF LESS THAN 45° WITH THE MAIN LINE SEWER. ANY CHANGE IN ALIGNMENT SHALL BE REQUESTED IN WRITING BY THE PRIVATE ENGINEER.
- THE PRIVATE ENGINEER SHALL FURNISH THE HOUSE LATERAL DEPTH AT THE PROPERTY LINE BELOW THE TOP OF CURB ELEVATION FOR EACH HOUSE LATERAL ON THE GRADE SHEET.
- BEFORE WORK CAN BE STARTED, THE CONTRACTOR MUST OBTAIN A PERMIT TO LOCATE IN COUNTY STREETS FROM THE COUNTY ENGINEER, DIVISION OF PUBLIC WORKS, COUNTY OF LOS ANGELES DEPARTMENT OF PUBLIC WORKS, OFFICE NO. 6, AND PAY A FEE TO THE DIRECTOR OF PUBLIC WORKS, 800 S. FIDELITY AVE., ALHAMBRA, CALIFORNIA 91803, TO COVER THE COST OF CONSTRUCTION INSPECTION AND RECORD PLANS.
- IF WORK IS TO BE DONE IN A STATE HIGHWAY, A PERMIT MUST BE OBTAINED FROM THE STATE OF CALIFORNIA, DIVISION OF HIGHWAYS, 120 SOUTH SPRING STREET, LOS ANGELES, CALIFORNIA.
- APPROVAL OF THIS PLAN BY THE COUNTY OF LOS ANGELES DOES NOT CONSTITUTE A REPRESENTATION AS TO THE ACCURACY OF THE LOCATION OF OR THE EXISTENCE OR NON-EXISTENCE OF ANY UNDERGROUND UTILITY PIPE, OR STRUCTURE WITHIN THE LIMITS OF THIS PROJECT. THIS NOTE APPLIES TO ALL PAGES.
- REFER TO SECTION 7.8.1 OF THE STANDARD SPECIFICATIONS REGARDING SAFETY ORDERS.
- PRIOR TO THE ISSUANCE OF THE REQUIRED SEWER CONSTRUCTION PERMIT, THE CONTRACTOR SHALL OBTAIN AND FILE WITH THE DEPARTMENT OF PUBLIC WORKS COPIES OF A PERMIT TO LOCATE IN COUNTY STREETS FROM THE COUNTY ENGINEER, DIVISION OF PUBLIC WORKS, COUNTY OF LOS ANGELES DEPARTMENT OF PUBLIC WORKS, OFFICE NO. 6, AND PAY A FEE TO THE DIRECTOR OF PUBLIC WORKS, 800 S. FIDELITY AVE., ALHAMBRA, CALIFORNIA 91803, TO COVER THE COST OF CONSTRUCTION INSPECTION AND RECORD PLANS.

CONSTRUCTION NOTES:

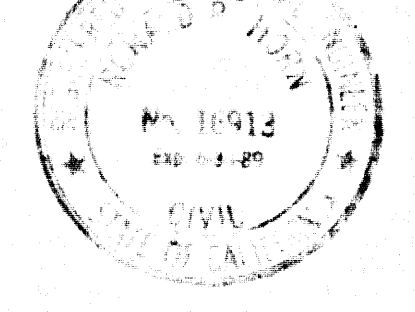
- WORK SHALL BE CONSTRUCTED ACCORDING TO THE STANDARD SPECIFICATIONS FOR PUBLIC WORKS CONSTRUCTION (1988 EDITION WITH THE LATEST REVISIONS) AND PART OF THE BUREAU SPECIAL PROVISIONS FOR THE CONSTRUCTION OF SANITARY SEWERS AND HOUSE LATERALS UNDER THIS CONTRACT. ALL WORK SHALL BE PROTECTED ONLY IN THE PRESENCE OF THE SUPERVISOR OF PUBLIC WORKS.
- THE CONTRACTOR SHALL NOTIFY THE CONSTRUCTION DIVISION BY TELEPHONE AT LEAST TWENTY-FOUR HOURS BEFORE STARTING WORK.
- HOUSE LATERALS TO BE CONSTRUCTED WITH INVERTS AT PROPERTY LINE 8 FEET BELOW CURB GRADE EXCEPT AS NOTED.
- PIPE OR TEE BRANCHES MAY BE USED FOR CONNECTIONS TO MAINLINE SEWERS EXCEPT AS NOTED.
- ALL STRUCTURES SHALL BE EITHER BRICK MANHOLES PER 8-0 OR PRECAST CONCRETE MANHOLES PER 8-23, EXCEPT AS NOTED.
- PROVIDE STAKES ON THE PROPERTY LINE OR PROPERTY LINES PRODUCED AT RIGHT ANGLES TO THE SEWER LINE AT THE CENTER LINE OF EACH MANHOLE.
- MANHOLE TOPS IN UNIMPROVED AREAS OF 18" TO BE 36" HIGHER ABOVE FINISHED GRADE.
- IF A POWER POLE IS WITHIN THREE FEET OF THE SEWER, THE SEWER SHALL BE ENCASED PER 8-23 CASE 1, TWO FEET ON EACH SIDE FROM THE POINT OF INTERFERENCE.
- IF FOUNDING OF THE COVER OF CONSTRUCTION IS DETERMINED THAT THERE IS LESS THAN FOUR FEET OF COVER OVER THE TOP OF MAINLINE OR HOUSE LATERAL V.C.P. SEWER WHICH IS NOT INDICATED ON THE PLANS, THE PIPE SHALL BE ENCASED PER 8-23 CASE II UNLESS OTHERWISE APPROVED BY THE DIRECTOR OF PUBLIC WORKS.
- ALL JOINTS BETWEEN CAST IRON PIPE AND AT-TRENCH CLAY PIPE SHALL BE MADE WITH A RUBBER SLEEVE JOINT, TYPE "C" OR "D", WITH RUBBERING IF NECESSARY PER STANDARD SPECIFICATIONS SECTION 208-2.
- SEWERS TO BE TESTED FOR LEAKAGE PER SECTION 208-1.4 OF THE STANDARD SPECIFICATIONS AND SPECIAL PROVISIONS.
- RESURFACE ALL TRENCHES WITHIN PAVED AREAS TO MEET LOS ANGELES COUNTY PUBLIC WORKS OR CALIFORNIA STATE HIGHWAY REQUIREMENTS IN ACCORDANCE WITH PERMITS.
- FULL COMPLIANCE WITH SECTION 208-1.3 OF THE STANDARD SPECIFICATIONS WILL BE REQUIRED FOR BACKFILL IN STREETS. CERTIFICATION OF BACKFILL COMPACTION AND SAND EQUIVALENT BY A QUALIFIED, REGISTERED TESTING LABORATORY SHALL BE PROVIDED BY THE PERMITTEE PRIOR TO THE ISSUANCE OF A CERTIFICATE OF PARTIAL ACCEPTANCE.
- SPECIAL BACKFILL IN EASEMENT CONSTRUCTION: (A) BACKFILL TRENCH AND REPLACE OTHER EARTH SO AS TO ACHIEVE THE NATURAL OR FINISHED GRADES AND SLOPES SHOWN ON THE GRADING PLAN APPROVED FOR THIS DEVELOPMENT BY THE LAND DEVELOPMENT DIVISION. (B) ALL BACKFILL AND EARTH REPLACES SHALL BE COMPACTED TO A MINIMUM OF 90% OF MAXIMUM DENSITY PER A.S.T.M. STD. METHOD OF TESTS FOR SANDS AND SOILS. ACCEPTABLE CERTIFICATION OF SUCH COMPACTION SHALL BE SUBMITTED TO THE CONSTRUCTION DIVISION, DEPT. OF PUBLIC WORKS.

TO BE CONSTRUCTED IN

PARCEL MAP NO. 17502

PRIVATE CONTRACT NO. 10720

INDEX A-69
 3 SHEETS, 6 PAGES



SCALE: HORIZ. 1"=40' JULY, 1987

PREPARED IN THE OFFICES OF
 SKANS ENGINEERING ASSOCIATES
 1820 BURBANK BLVD., VAN NUYS, CA 91411, TEL. (818) 781-8990.
 BY: *Donald V. Horn*
 REG. C.E. No. 15313

THE FOLLOWING LATEST REVISED STANDARD PLANS ON FILE IN THE OFFICE OF THE DEPARTMENT OF PUBLIC WORKS SHALL APPLY TO THE CONSTRUCTION OF THIS PROJECT:

MINIMUM PUBLIC SAFETY REQUIREMENTS	8-1
LEACHING	8-2
BRICK MANHOLE	8-3
STANDARD MANHOLE STEP	8-17
RECORDING FOR SEWER PIPE	8-21
CRADLING AND ENCASEMENT	8-23
PIPE OR TEE SUPPORT	8-26
ALL CHANGE TRENCH WIDTHS	8-28
LOCKING MANHOLE FRAME AND COVER	8-28
NON-REINFORCED PRECAST CONCRETE MANHOLE	8-28
SPECIAL HOUSE LATERALS	8-28

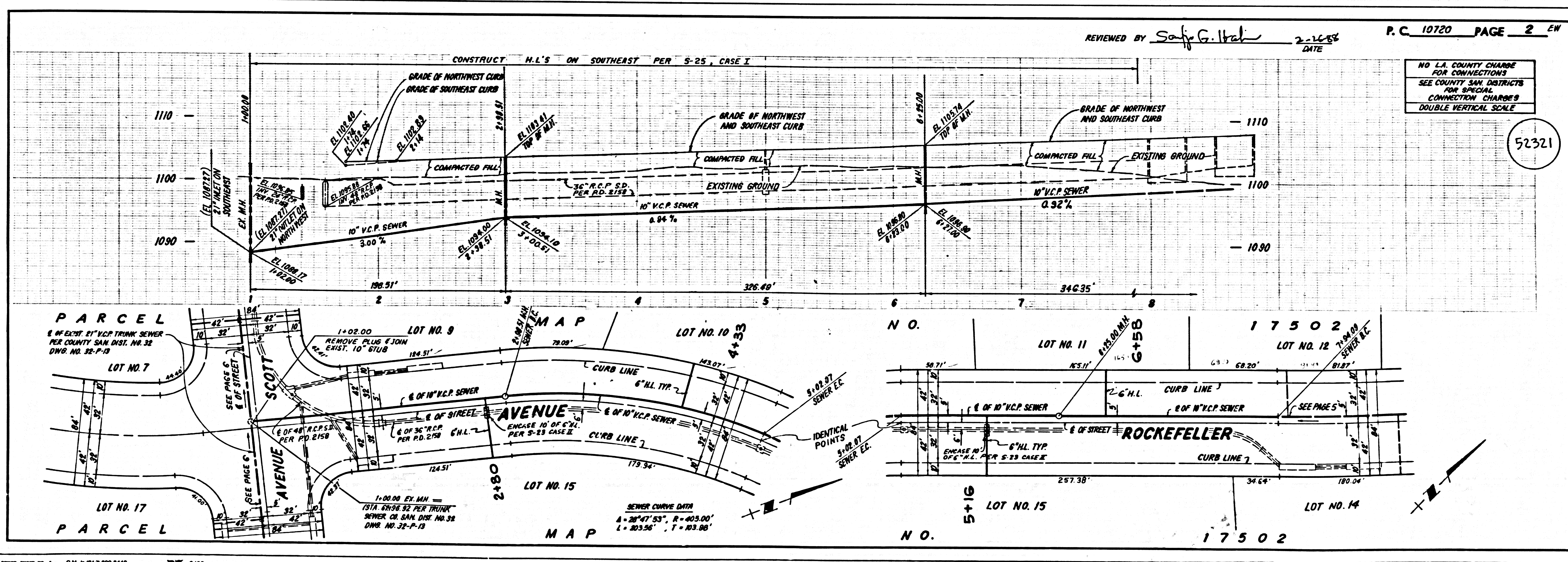
IN ADDITION THE FOLLOWING COUNTY SANITATION DISTRICT STANDARDS SHALL APPLY TO THE CONSTRUCTION OF THIS PROJECT:

STANDARD CURBLINE PIPE	8-8-216
COUNTY OF LOS ANGELES, CALIFORNIA	8-8-216
THOMAS A. IDEMANNSON	CHARLES W. CARRY
DIRECTOR OF PUBLIC WORKS	CHIEF ENGINEER
CO. SAN. DIST. NO. 32	

APPROVED *Don E. Hollins* 3-3-88 DATE: APPROVED *Jan C. Dwyer* 3/1/88 DATE: OFFICE ENGINEER

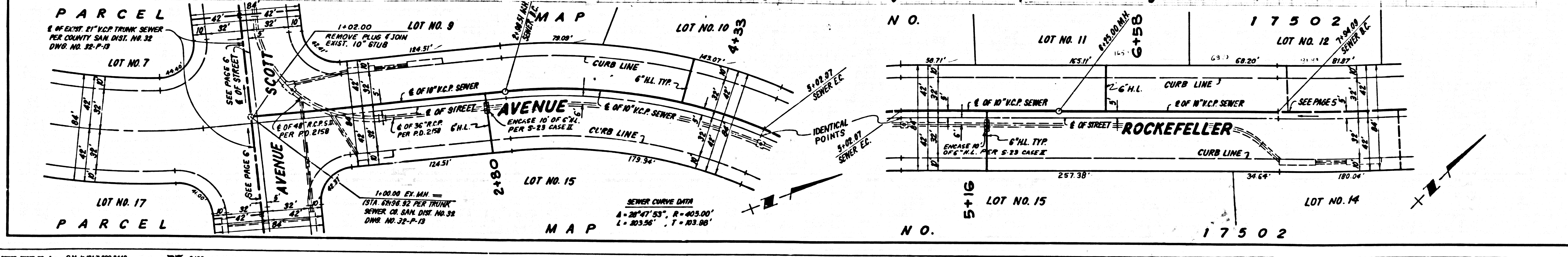
CHECKED *Bernard Robinson* 3-1-88 DATE: REG. C.E. NO. 18,116

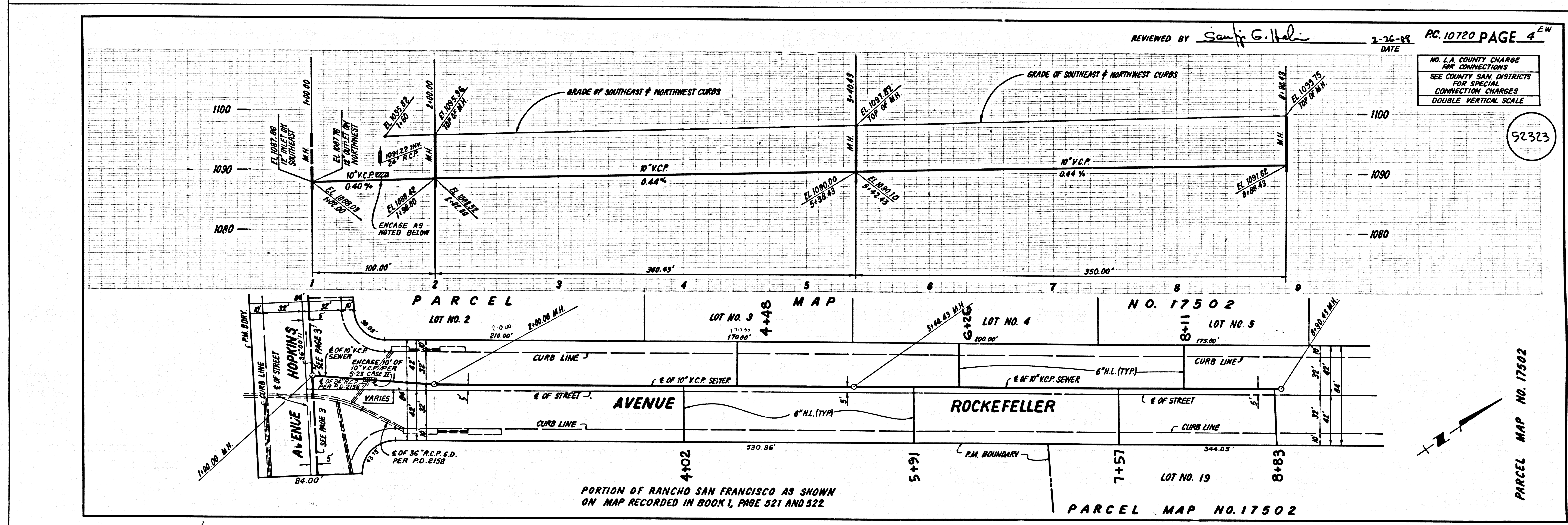
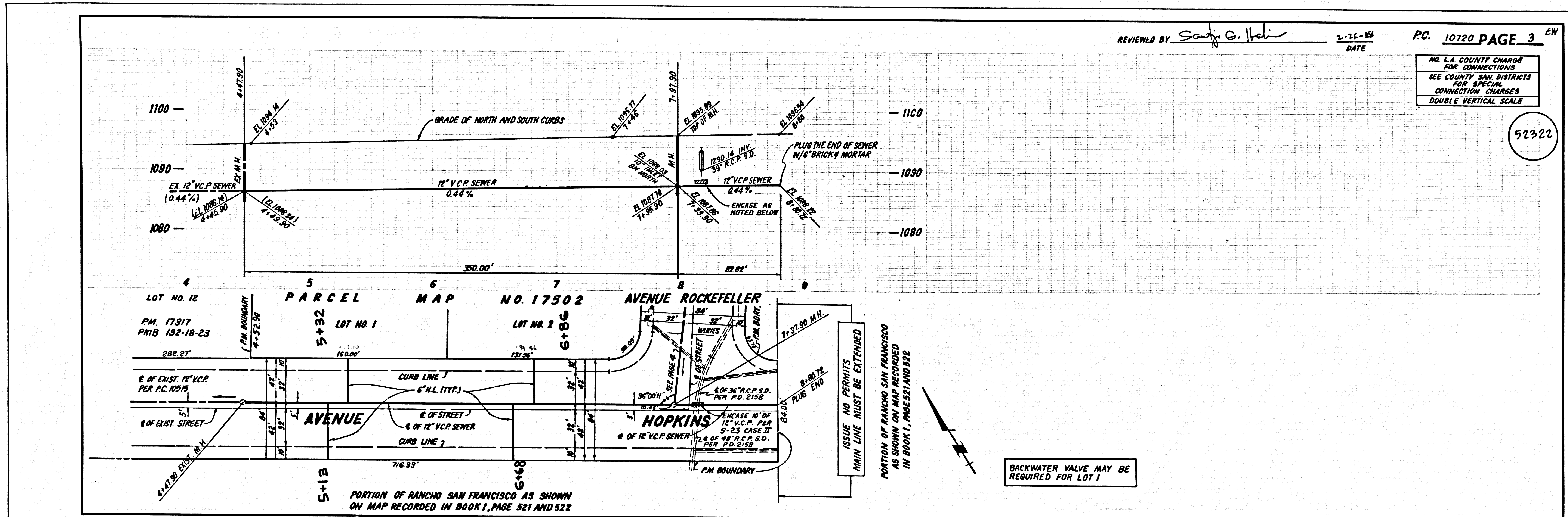
SANTA CLARITA VALLEY BLDG. DIST. 8-E

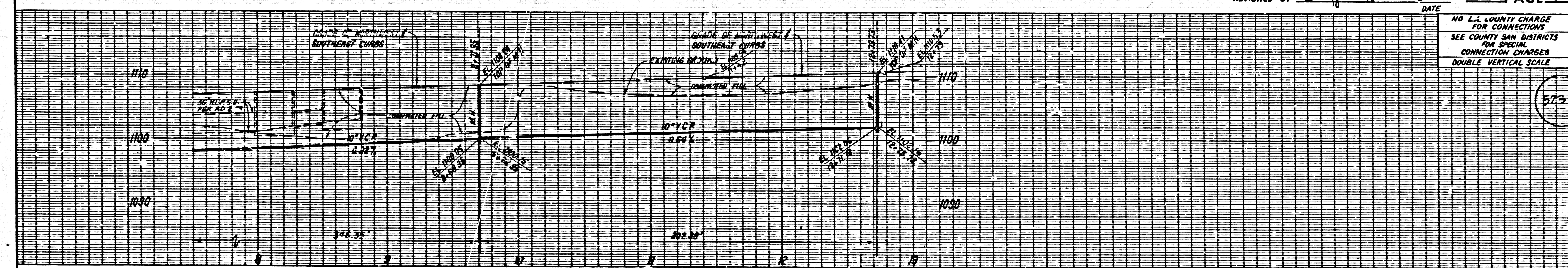


REVIEWED BY *Sally G. Hal* DATE: 2-28-88

NO L.A. COUNTY CHARGE FOR CONNECTIONS
 SEE COUNTY SAN. DISTRICTS FOR SPECIAL CONNECTION CHARGES
 DOUBLE VERTICAL SCALE

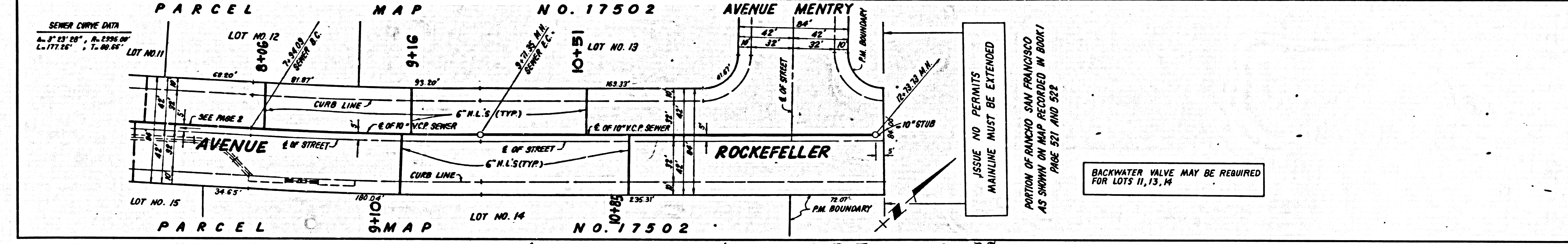






NO L.A. COUNTY CHARGE FOR CONNECTIONS
SEE COUNTY SAN DISTRICTS FOR SPECIAL CONNECTION CHARGES
DOUBLE VERTICAL SCALE

57324

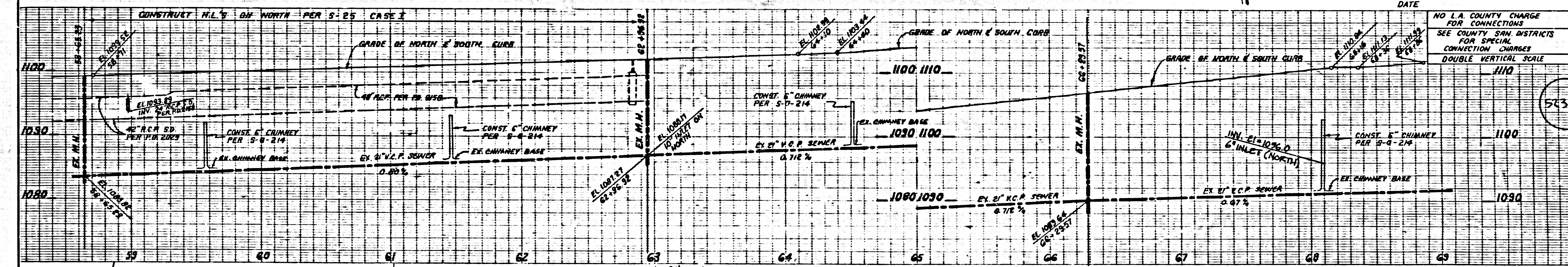


SEWER CURVE DATA
R. 5° 23' 50" A. 2396.00'
L. 177.26' T. 40.65'

PARCEL MAP NO. 17502 AVENUE MENTRY

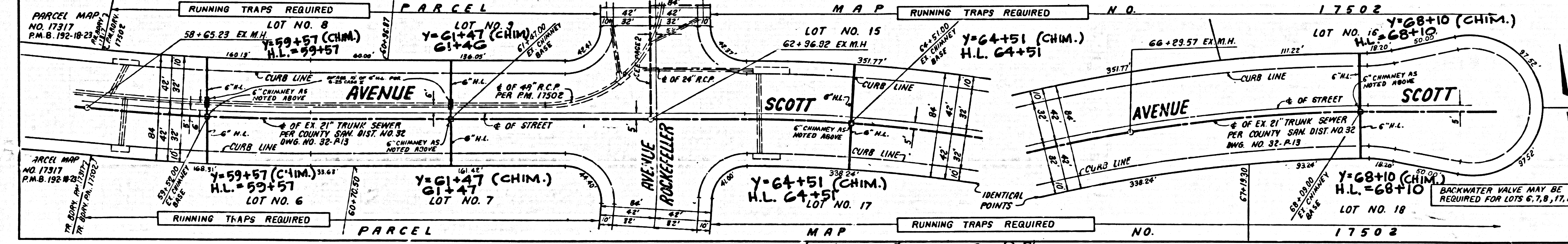
PARCEL MAP NO. 17502 AVENUE ROCKEFELLER

100% ONLY TO M.H. 9+71.35 7-29-88



NO L.A. COUNTY CHARGE FOR CONNECTIONS
SEE COUNTY SAN DISTRICTS FOR SPECIAL CONNECTION CHARGES
DOUBLE VERTICAL SCALE

57325



PARCEL MAP NO. 17317 P.M.B. 192-10-23

PARCEL MAP NO. 17317 P.M.B. 192-10-23

PARCEL MAP NO. 17502 AVENUE SCOTT

PARCEL MAP NO. 17502 AVENUE ROCKEFELLER

PG 6 NOT 100% AS OF 7-29-88