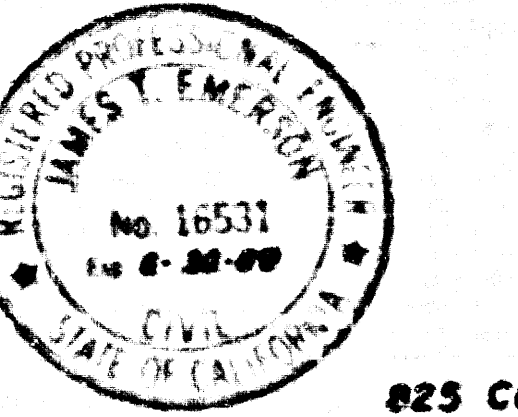


**SANITARY SEWERS**  
TO BE CONSTRUCTED IN

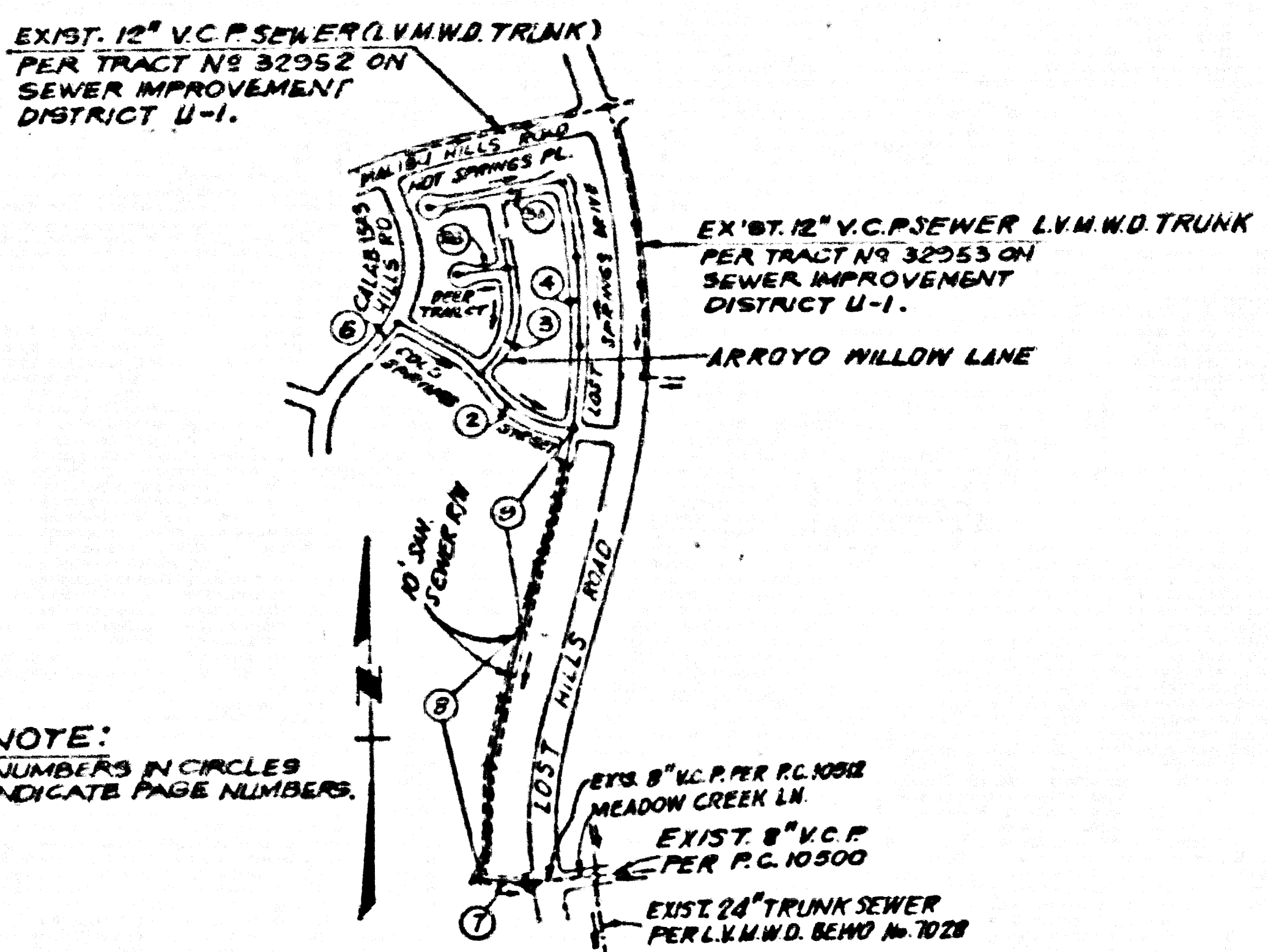
**TRACT No. 4522**  
**PRIVATE CONTRACT No. 10725**  
INDEX C-241  
9 SHEETS, 9 PAGES



SCALE: HORIZ. 1" = 30' VERT. 1" = 4'  
NOVEMBER 1, 1988  
PREPARED IN THE OFFICES OF  
**B & E ENGINEERS**  
825 COLORADO BLVD., SUITE 222, LOS ANGELES, CA. 90041  
BY: *James T. Emerson* PHONE (213) 254-2434  
REG. CE. No. 16531

52330

B.M. C.Y. 5385A ELEV. 700.049  
C.G. B.M. MON. 2 IN. DN. 80 FT. N.W. C/L LAS VIRGENES RD. 0.6 MI. W. ARTHUR & WRIGHT SCHOOL. 17 FT. 8 IN. NS. (64.93) E. 118 FT. N/O DIRT RD. TO E. 1.45 MI. S/O AGOURA RD. MKD. (B.M. 51-19) MA. 1241 QUAD. 1982



NOTE: NUMBERS IN CIRCLES INDICATE PAGE NUMBERS.

**INDEX MAP**  
TRACT No. 4522  
P.C. No. 10725  
SCALE: 1" = 600'

NO.	REVISION	REVISED BY	APPROVED BY	DATE	
1	ADDED 10' TO 12' TO 13' TO 14' TO 15' TO 16' TO 17' TO 18' TO 19' TO 20' TO 21' TO 22' TO 23' TO 24' TO 25' TO 26' TO 27' TO 28' TO 29' TO 30' TO 31' TO 32' TO 33' TO 34' TO 35' TO 36' TO 37' TO 38' TO 39' TO 40' TO 41' TO 42' TO 43' TO 44' TO 45' TO 46' TO 47' TO 48' TO 49' TO 50' TO 51' TO 52' TO 53' TO 54' TO 55' TO 56' TO 57' TO 58' TO 59' TO 60' TO 61' TO 62' TO 63' TO 64' TO 65' TO 66' TO 67' TO 68' TO 69' TO 70' TO 71' TO 72' TO 73' TO 74' TO 75' TO 76' TO 77' TO 78' TO 79' TO 80' TO 81' TO 82' TO 83' TO 84' TO 85' TO 86' TO 87' TO 88' TO 89' TO 90' TO 91' TO 92' TO 93' TO 94' TO 95' TO 96' TO 97' TO 98' TO 99' TO 100' TO 101' TO 102' TO 103' TO 104' TO 105' TO 106' TO 107' TO 108' TO 109' TO 110' TO 111' TO 112' TO 113' TO 114' TO 115' TO 116' TO 117' TO 118' TO 119' TO 120' TO 121' TO 122' TO 123' TO 124' TO 125' TO 126' TO 127' TO 128' TO 129' TO 130' TO 131' TO 132' TO 133' TO 134' TO 135' TO 136' TO 137' TO 138' TO 139' TO 140' TO 141' TO 142' TO 143' TO 144' TO 145' TO 146' TO 147' TO 148' TO 149' TO 150' TO 151' TO 152' TO 153' TO 154' TO 155' TO 156' TO 157' TO 158' TO 159' TO 160' TO 161' TO 162' TO 163' TO 164' TO 165' TO 166' TO 167' TO 168' TO 169' TO 170' TO 171' TO 172' TO 173' TO 174' TO 175' TO 176' TO 177' TO 178' TO 179' TO 180' TO 181' TO 182' TO 183' TO 184' TO 185' TO 186' TO 187' TO 188' TO 189' TO 190' TO 191' TO 192' TO 193' TO 194' TO 195' TO 196' TO 197' TO 198' TO 199' TO 200' TO 201' TO 202' TO 203' TO 204' TO 205' TO 206' TO 207' TO 208' TO 209' TO 210' TO 211' TO 212' TO 213' TO 214' TO 215' TO 216' TO 217' TO 218' TO 219' TO 220' TO 221' TO 222' TO 223' TO 224' TO 225' TO 226' TO 227' TO 228' TO 229' TO 230' TO 231' TO 232' TO 233' TO 234' TO 235' TO 236' TO 237' TO 238' TO 239' TO 240' TO 241' TO 242' TO 243' TO 244' TO 245' TO 246' TO 247' TO 248' TO 249' TO 250' TO 251' TO 252' TO 253' TO 254' TO 255' TO 256' TO 257' TO 258' TO 259' TO 260' TO 261' TO 262' TO 263' TO 264' TO 265' TO 266' TO 267' TO 268' TO 269' TO 270' TO 271' TO 272' TO 273' TO 274' TO 275' TO 276' TO 277' TO 278' TO 279' TO 280' TO 281' TO 282' TO 283' TO 284' TO 285' TO 286' TO 287' TO 288' TO 289' TO 290' TO 291' TO 292' TO 293' TO 294' TO 295' TO 296' TO 297' TO 298' TO 299' TO 300' TO 301' TO 302' TO 303' TO 304' TO 305' TO 306' TO 307' TO 308' TO 309' TO 310' TO 311' TO 312' TO 313' TO 314' TO 315' TO 316' TO 317' TO 318' TO 319' TO 320' TO 321' TO 322' TO 323' TO 324' TO 325' TO 326' TO 327' TO 328' TO 329' TO 330' TO 331' TO 332' TO 333' TO 334' TO 335' TO 336' TO 337' TO 338' TO 339' TO 340' TO 341' TO 342' TO 343' TO 344' TO 345' TO 346' TO 347' TO 348' TO 349' TO 350' TO 351' TO 352' TO 353' TO 354' TO 355' TO 356' TO 357' TO 358' TO 359' TO 360' TO 361' TO 362' TO 363' TO 364' TO 365' TO 366' TO 367' TO 368' TO 369' TO 370' TO 371' TO 372' TO 373' TO 374' TO 375' TO 376' TO 377' TO 378' TO 379' TO 380' TO 381' TO 382' TO 383' TO 384' TO 385' TO 386' TO 387' TO 388' TO 389' TO 390' TO 391' TO 392' TO 393' TO 394' TO 395' TO 396' TO 397' TO 398' TO 399' TO 400' TO 401' TO 402' TO 403' TO 404' TO 405' TO 406' TO 407' TO 408' TO 409' TO 410' TO 411' TO 412' TO 413' TO 414' TO 415' TO 416' TO 417' TO 418' TO 419' TO 420' TO 421' TO 422' TO 423' TO 424' TO 425' TO 426' TO 427' TO 428' TO 429' TO 430' TO 431' TO 432' TO 433' TO 434' TO 435' TO 436' TO 437' TO 438' TO 439' TO 440' TO 441' TO 442' TO 443' TO 444' TO 445' TO 446' TO 447' TO 448' TO 449' TO 450' TO 451' TO 452' TO 453' TO 454' TO 455' TO 456' TO 457' TO 458' TO 459' TO 460' TO 461' TO 462' TO 463' TO 464' TO 465' TO 466' TO 467' TO 468' TO 469' TO 470' TO 471' TO 472' TO 473' TO 474' TO 475' TO 476' TO 477' TO 478' TO 479' TO 480' TO 481' TO 482' TO 483' TO 484' TO 485' TO 486' TO 487' TO 488' TO 489' TO 490' TO 491' TO 492' TO 493' TO 494' TO 495' TO 496' TO 497' TO 498' TO 499' TO 500' TO 501' TO 502' TO 503' TO 504' TO 505' TO 506' TO 507' TO 508' TO 509' TO 510' TO 511' TO 512' TO 513' TO 514' TO 515' TO 516' TO 517' TO 518' TO 519' TO 520' TO 521' TO 522' TO 523' TO 524' TO 525' TO 526' TO 527' TO 528' TO 529' TO 530' TO 531' TO 532' TO 533' TO 534' TO 535' TO 536' TO 537' TO 538' TO 539' TO 540' TO 541' TO 542' TO 543' TO 544' TO 545' TO 546' TO 547' TO 548' TO 549' TO 550' TO 551' TO 552' TO 553' TO 554' TO 555' TO 556' TO 557' TO 558' TO 559' TO 560' TO 561' TO 562' TO 563' TO 564' TO 565' TO 566' TO 567' TO 568' TO 569' TO 570' TO 571' TO 572' TO 573' TO 574' TO 575' TO 576' TO 577' TO 578' TO 579' TO 580' TO 581' TO 582' TO 583' TO 584' TO 585' TO 586' TO 587' TO 588' TO 589' TO 590' TO 591' TO 592' TO 593' TO 594' TO 595' TO 596' TO 597' TO 598' TO 599' TO 600' TO 601' TO 602' TO 603' TO 604' TO 605' TO 606' TO 607' TO 608' TO 609' TO 610' TO 611' TO 612' TO 613' TO 614' TO 615' TO 616' TO 617' TO 618' TO 619' TO 620' TO 621' TO 622' TO 623' TO 624' TO 625' TO 626' TO 627' TO 628' TO 629' TO 630' TO 631' TO 632' TO 633' TO 634' TO 635' TO 636' TO 637' TO 638' TO 639' TO 640' TO 641' TO 642' TO 643' TO 644' TO 645' TO 646' TO 647' TO 648' TO 649' TO 650' TO 651' TO 652' TO 653' TO 654' TO 655' TO 656' TO 657' TO 658' TO 659' TO 660' TO 661' TO 662' TO 663' TO 664' TO 665' TO 666' TO 667' TO 668' TO 669' TO 670' TO 671' TO 672' TO 673' TO 674' TO 675' TO 676' TO 677' TO 678' TO 679' TO 680' TO 681' TO 682' TO 683' TO 684' TO 685' TO 686' TO 687' TO 688' TO 689' TO 690' TO 691' TO 692' TO 693' TO 694' TO 695' TO 696' TO 697' TO 698' TO 699' TO 700' TO 701' TO 702' TO 703' TO 704' TO 705' TO 706' TO 707' TO 708' TO 709' TO 710' TO 711' TO 712' TO 713' TO 714' TO 715' TO 716' TO 717' TO 718' TO 719' TO 720' TO 721' TO 722' TO 723' TO 724' TO 725' TO 726' TO 727' TO 728' TO 729' TO 730' TO 731' TO 732' TO 733' TO 734' TO 735' TO 736' TO 737' TO 738' TO 739' TO 740' TO 741' TO 742' TO 743' TO 744' TO 745' TO 746' TO 747' TO 748' TO 749' TO 750' TO 751' TO 752' TO 753' TO 754' TO 755' TO 756' TO 757' TO 758' TO 759' TO 760' TO 761' TO 762' TO 763' TO 764' TO 765' TO 766' TO 767' TO 768' TO 769' TO 770' TO 771' TO 772' TO 773' TO 774' TO 775' TO 776' TO 777' TO 778' TO 779' TO 780' TO 781' TO 782' TO 783' TO 784' TO 785' TO 786' TO 787' TO 788' TO 789' TO 790' TO 791' TO 792' TO 793' TO 794' TO 795' TO 796' TO 797' TO 798' TO 799' TO 800' TO 801' TO 802' TO 803' TO 804' TO 805' TO 806' TO 807' TO 808' TO 809' TO 810' TO 811' TO 812' TO 813' TO 814' TO 815' TO 816' TO 817' TO 818' TO 819' TO 820' TO 821' TO 822' TO 823' TO 824' TO 825' TO 826' TO 827' TO 828' TO 829' TO 830' TO 831' TO 832' TO 833' TO 834' TO 835' TO 836' TO 837' TO 838' TO 839' TO 840' TO 841' TO 842' TO 843' TO 844' TO 845' TO 846' TO 847' TO 848' TO 849' TO 850' TO 851' TO 852' TO 853' TO 854' TO 855' TO 856' TO 857' TO 858' TO 859' TO 860' TO 861' TO 862' TO 863' TO 864' TO 865' TO 866' TO 867' TO 868' TO 869' TO 870' TO 871' TO 872' TO 873' TO 874' TO 875' TO 876' TO 877' TO 878' TO 879' TO 880' TO 881' TO 882' TO 883' TO 884' TO 885' TO 886' TO 887' TO 888' TO 889' TO 890' TO 891' TO 892' TO 893' TO 894' TO 895' TO 896' TO 897' TO 898' TO 899' TO 900' TO 901' TO 902' TO 903' TO 904' TO 905' TO 906' TO 907' TO 908' TO 909' TO 910' TO 911' TO 912' TO 913' TO 914' TO 915' TO 916' TO 917' TO 918' TO 919' TO 920' TO 921' TO 922' TO 923' TO 924' TO 925' TO 926' TO 927' TO 928' TO 929' TO 930' TO 931' TO 932' TO 933' TO 934' TO 935' TO 936' TO 937' TO 938' TO 939' TO 940' TO 941' TO 942' TO 943' TO 944' TO 945' TO 946' TO 947' TO 948' TO 949' TO 950' TO 951' TO 952' TO 953' TO 954' TO 955' TO 956' TO 957' TO 958' TO 959' TO 960' TO 961' TO 962' TO 963' TO 964' TO 965' TO 966' TO 967' TO 968' TO 969' TO 970' TO 971' TO 972' TO 973' TO 974' TO 975' TO 976' TO 977' TO 978' TO 979' TO 980' TO 981' TO 982' TO 983' TO 984' TO 985' TO 986' TO 987' TO 988' TO 989' TO 990' TO 991' TO 992' TO 993' TO 994' TO 995' TO 996' TO 997' TO 998' TO 999' TO 1000'				

**BACK WATER VALVE MAY BE REQUIRED FOR LOTS 1 THRU 116**  
**ISSUE NO CONNECTION PERMIT UNTIL OUTLET SEWER P.C. 10512 IS ACCEPTED FOR PUBLIC USE BY THE COUNTY OF LOS ANGELES**

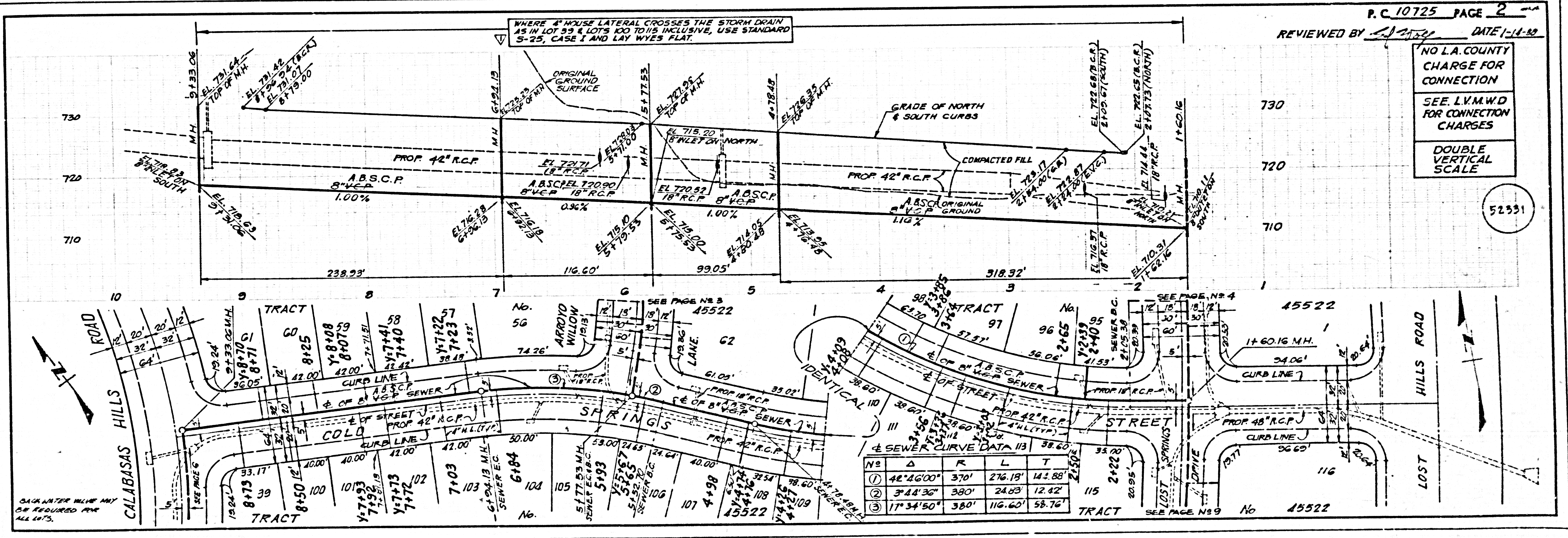
- GENERAL NOTES:**
- ELEVATIONS ARE IN FEET ABOVE M.S.C. & D.S. SEA LEVEL DATUM OF 1988.
  - NO REVISIONS SHALL BE MADE IN THESE PLANS WITHOUT THE APPROVAL OF THE DIRECTOR OF PUBLIC WORKS.
  - NO REPRESENTATIVE OF THE DEPARTMENT OF PUBLIC WORKS SHALL SURVEY OR LAY OUT ANY PORTION OF THE WORK.
  - GRADES TO WHICH THIS IMPROVEMENT IS TO BE CONSTRUCTED ARE SHOWN ON PLANS AND PROFILE GRADE POINTS FOR TOP OF CURBS, CENTER LINE OF STREETS OR CENTER PERMITS OF ALLEYS ARE SHOWN BY CIRCLES ON PROFILE AS AT FALL POINTS TO BE IN THE SHOWN POINTS. THE GRADE SHALL BE ESTABLISHED SO AS TO CONFORM TO A STRAIGHT LINE BETWEEN THE SHOWN GRADE POINTS.
  - THE PRIVATE ENGINEER SHALL FURNISH THE DEPARTMENT OF PUBLIC WORKS WITH GRADE SHEETS AND STATIONING FOR ALL HOUSE LATERALS AND "1" OR "1.5" BRANCHES AND SHALL PROVIDE STAKES FOR THE SAME AT THEIR PROPOSED LOCATIONS WITH STATIONING PLAINLY MARKED. ALL HOUSE LATERALS SHALL BE CONSTRUCTED BY A STRAIGHT LINE FROM THE MAIN LINE TO THE POINT OF CONNECTION AS SHOWN ON THE PLANS. HOUSE LATERALS SHALL NOT HAVE AN ANGLE OF LESS THAN 90° WITH THE MAIN LINE UNLESS ANY CHANGE IN ALIGNMENT SHALL BE REQUESTED IN WRITING BY THE PRIVATE ENGINEER.
  - THE PRIVATE ENGINEER SHALL FURNISH THE HOUSE LATERAL DEPTH AT THE POINT OF ENTRY BELOW THE TOP OF CURB ELEVATION FOR EACH HOUSE LATERAL ON THE GRADE SHEET.
  - BEFORE WORK COMMENCES, THE CONTRACTOR SHALL OBTAIN A PERMIT TO EXCAVATE IN THE COUNTY STREETS FROM THE COUNTY ENGINEER. THE LOS ANGELES DEPARTMENT OF PUBLIC WORKS PERMIT OF EXCAVATION SHALL BE OBTAINED FROM THE DIRECTOR OF PUBLIC WORKS, ROOM 1000, 1200 WEST 10TH STREET, LOS ANGELES, CALIFORNIA 90015. THE CONTRACTOR SHALL BE RESPONSIBLE FOR THE COST OF CONSTRUCTION INSPECTION AND RECORD PLANS.
  - IF WORK IS TO BE DONE IN A STREET, A PERMIT MUST BE OBTAINED FROM THE STATE OF CALIFORNIA DIVISION OF HIGHWAYS, 120 SOUTH BRIDGE STREET, LOS ANGELES, CALIFORNIA.
  - APPROVAL OF THIS PLAN BY THE COUNTY OF LOS ANGELES DOES NOT CONSTITUTE A REPRESENTATION AS TO THE ACCURACY OF THE LOCATION OF OR THE EXISTENCE OR NON-EXISTENCE OF ANY UNDERGROUND UTILITIES, PIPE, OR STRUCTURE WITHIN THE LIMITS OF THIS PROJECT. THE CONTRACTOR SHALL BE RESPONSIBLE FOR THE LOCATION OF ALL UTILITIES.
  - REFER TO SECTION 710.6.1 OF THE STANDARD SPECIFICATIONS REGARDING SAFETY CONES.
  - PROVIDE THE REFINANCE OF THE REQUIRED OR A CONSTRUCTION PERMIT FROM THE COUNTY ENGINEER AND FILE WITH THE DEPARTMENT OF PUBLIC WORKS. HOUSE LATERALS OR A PERMIT TO EXCAVATE IN COUNTY STREETS FROM THE COUNTY ENGINEER. THE DEPARTMENT OF PUBLIC WORKS PERMIT FOR EXCAVATIONS AND TRENCHES FROM THE STATE OF CALIFORNIA, DIVISION OF HIGHWAYS, 120 SOUTH BRIDGE STREET, LOS ANGELES, CALIFORNIA 90015. THE CONTRACTOR SHALL BE RESPONSIBLE FOR THE COST OF CONSTRUCTION INSPECTION AND RECORD PLANS.

- CONSTRUCTION NOTES:**
- WORK SHALL BE CONSTRUCTED ACCORDING TO THE STANDARD SPECIFICATIONS FOR PUBLIC WORKS CONSTRUCTION 1988, 10TH EDITION WITH THE COUNTY OF LOS ANGELES AMENDMENTS AND SUPPLEMENTAL NOTES. SPECIAL PROVISIONS FOR THE CONSTRUCTION OF SANITARY SEWERS DATED 3/27/88 SHALL BE OBSERVED. THIS SHALL BE OBSERVED ONLY IN THE PRESENCE OF THE DEPT. OF PUBLIC WORKS.
  - THE CONTRACTOR SHALL NOTIFY THE CONSTRUCTION DIVISION BY TELEPHONE (800) AT LEAST TWENTY-FOUR HOURS BEFORE STARTING ANY WORK UNDER THIS CONTRACT.
  - HOUSE LATERALS TO BE CONSTRUCTED WITH INVERTS AT PROPERTY LINE 6 FEET BELOW CURB GRADE EXCEPT AS NOTED.
  - PIPE OR TEE BRANCHES MAY BE USED FOR CONNECTIONS TO MAINLINE SEWERS EXCEPT AS NOTED.
  - ALL STRUCTURES SHALL BE EITHER BRICK MANHOLES PER 5-2 OF PRECAST CONCRETE MANHOLES PER 5-26 EXCEPT AS NOTED.
  - PROVIDE STAKES ON THE PROPERTY LINE OR PROPERTY LINES PRODUCED AT RIGHT ANGLES TO THE SEWER LINE AT THE CENTER LINE OF EACH MANHOLE.
  - MANHOLE TOPS IN UNIMPROVED PORTIONS OF WAY TO BE SIX INCHES ABOVE FINISHED GRADE.
  - STRENGTHENED CLAY PIPE JOINTS SHALL BE TYPE "D" OR "E" PER STANDARD SPECIFICATIONS SECTION 500-3.
  - IF A POWER POLE IS WITHIN THREE FEET OF THE SEWER, THE SEWER SHALL BE ENCASED PER 5-25 CASE II TWO FEET ON EACH SIDE FROM THE POINT OF INTERFERENCE.
  - DURING THE COURSE OF CONSTRUCTION IT IS DETERMINED THAT THERE IS LESS THAN FOUR FEET OF COVER OVER THE TOP OF A MAIN LINE OR HOUSE LATERAL, V.C.P. SEWER WHICH IS NOT INDICATED ON THE PLANS, THE PIPE SHALL BE ENCASED PER 5-25 CASE II UNLESS OTHERWISE APPROVED BY THE DIRECTOR OF PUBLIC WORKS.
  - ALL JOINTS BETWEEN CAST IRON PIPE AND STRENGTHENED CLAY PIPE SHALL BE MADE WITH A RUBBER SLEEVE JOINT, TYPE "C" OR "D", WITH BUSHING IF NECESSARY PER STANDARD SPECIFICATIONS SECTION 500-3.
  - SEWERS TO BE TESTED FOR LEAKAGE PER SECTION 500-1.4 OF THE STANDARD SPECIFICATIONS AND SPECIAL PROVISIONS.
  - RESURFACE ALL TRENCHES WITHIN PAVED AREAS TO MEET LOS ANGELES COUNTY PUBLIC WORKS OR CALIFORNIA STATE HIGHWAY REQUIREMENTS IN ACCORDANCE WITH PERMITS.
  - FULL COMPLIANCE WITH SECTION 500-1.2 OF THE STANDARD SPECIFICATIONS SHALL BE REQUIRED FOR BACKFILL IN STREETS. CERTIFICATION OF BACKFILL COMPACTION AND SAND EQUIVALENT BY A QUALIFIED RESIDENTIAL TESTING LABORATORY SHALL BE PROVIDED BY THE CONTRACTOR PRIOR TO THE RESURFACING OF ANY PAVED AREA. ACCEPTABLE CERTIFICATION OF SUCH COMPACTION SHALL BE SUBMITTED TO THE CONSTRUCTION DIVISION, DEPT. OF PUBLIC WORKS.

THE FOLLOWING LA TEST REVISION STANDARD PLANS ON FILE IN THE OFFICE OF THE DEPARTMENT OF PUBLIC WORKS SHALL APPLY TO THE CONSTRUCTION OF THIS PROJECT.

LEGEND	COUNTY
MINIMUM PUBLIC SAFETY REQUIREMENTS	5-1
BRICK SEWER MANHOLE	5-2
STANDARD MANHOLE STEP	5-11
REGULATIONS FOR SEWER PIPE	5-27
CRACKING AND ENCASEMENT	5-29
PIPE OR TEE SUPPORT	5-28
ALLOWABLE TRENCH WIDTHS	5-30
LOCKING MANHOLE & FRAME AND COVER	5-38
NON-REINFORCED PRECAST CONCRETE SEWER MANHOLE	5-39
ENCASEMENT	5-23
SPECIAL HOUSE LATERALS	5-24

COUNTY OF LOS ANGELES, CALIFORNIA  
THOMAS A. TIDEMANSON, DIRECTOR OF PUBLIC WORKS  
N. M. STOKES, CHIEF ENGINEER  
LAS VIRGENES MUNICIPAL WATER DISTRICT  
APPROVED: *Carl G. Hill* 1-18-88 (10418)  
APPROVED: *James T. Emerson* 1-18-88 (10418)  
CHECKED: *Sandy G. Hill* 1-18-88 (10418)  
REG. CE. NO. 33134  
CALABASAS BLDG. DIST. 9.1

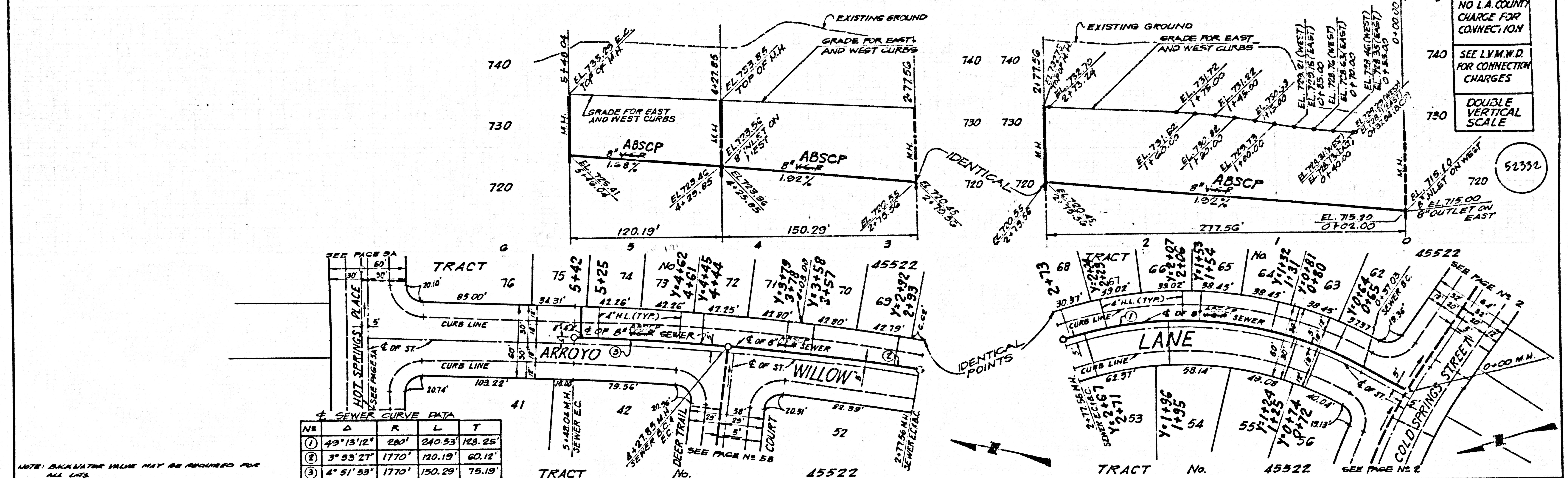


P.C. 10725 PAGE 2  
REVIEWED BY: *[Signature]* DATE: 1-14-88

NO L.A. COUNTY CHARGE FOR CONNECTION  
SEE L.V.M.W.D FOR CONNECTION CHARGES  
DOUBLE VERTICAL SCALE

52331



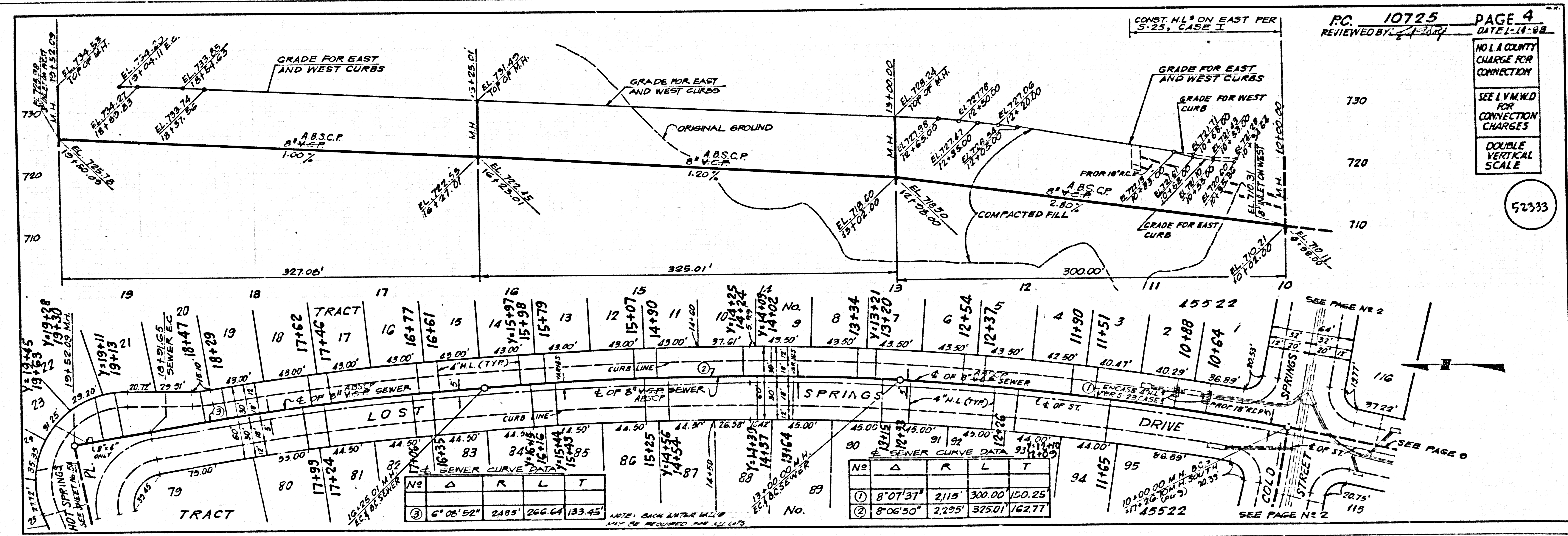


NO L.A. COUNTY CHARGE FOR CONNECTION  
 SEE L.V.M.W.D. FOR CONNECTION CHARGES  
 DOUBLE VERTICAL SCALE

SEWER CURVE DATA

NO	Δ	R	L	T
①	49°13'12"	280'	240.53'	128.25'
②	3°53'27"	1770'	120.19'	60.12'
③	4°51'53"	1770'	150.29'	75.19'

NOTE: EXAMINATOR VALUE MAY BE REQUIRED FOR ALL LOTS.



NO L.A. COUNTY CHARGE FOR CONNECTION  
 SEE L.V.M.W.D. FOR CONNECTION CHARGES  
 DOUBLE VERTICAL SCALE

SEWER CURVE DATA

NO	Δ	R	L	T
③	6°08'52"	2485'	266.64'	133.45'

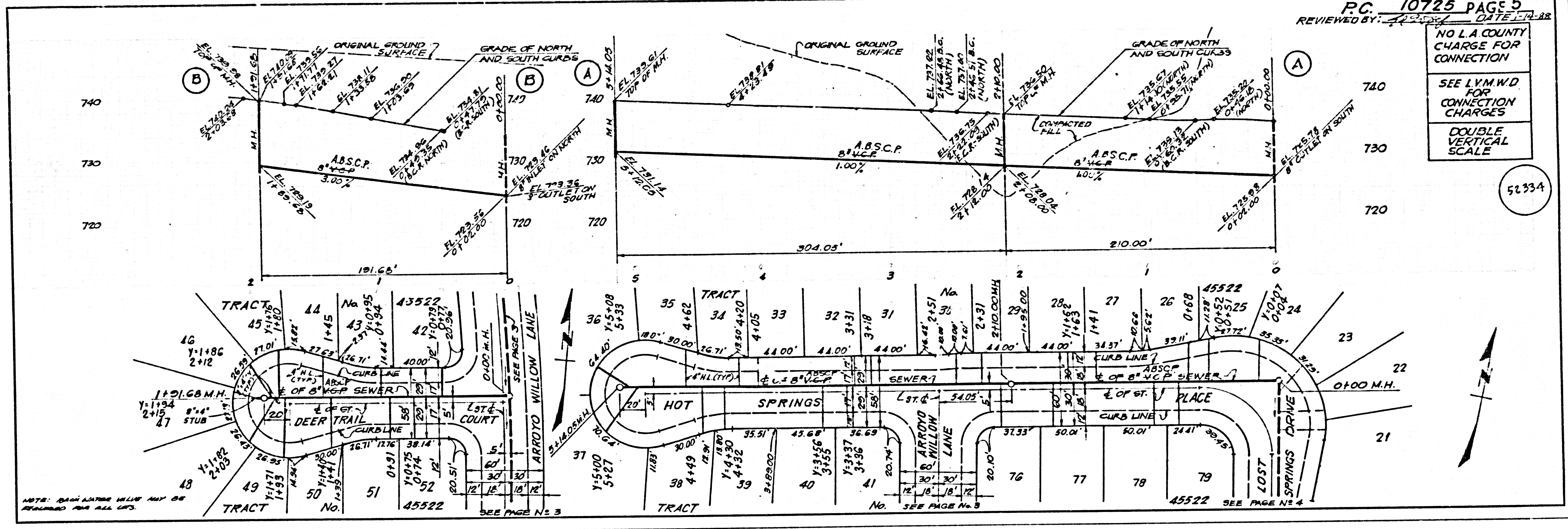
NOTE: EXAMINATOR VALUE MAY BE REQUIRED FOR ALL LOTS.

TRACT 45522

TRACT 45522

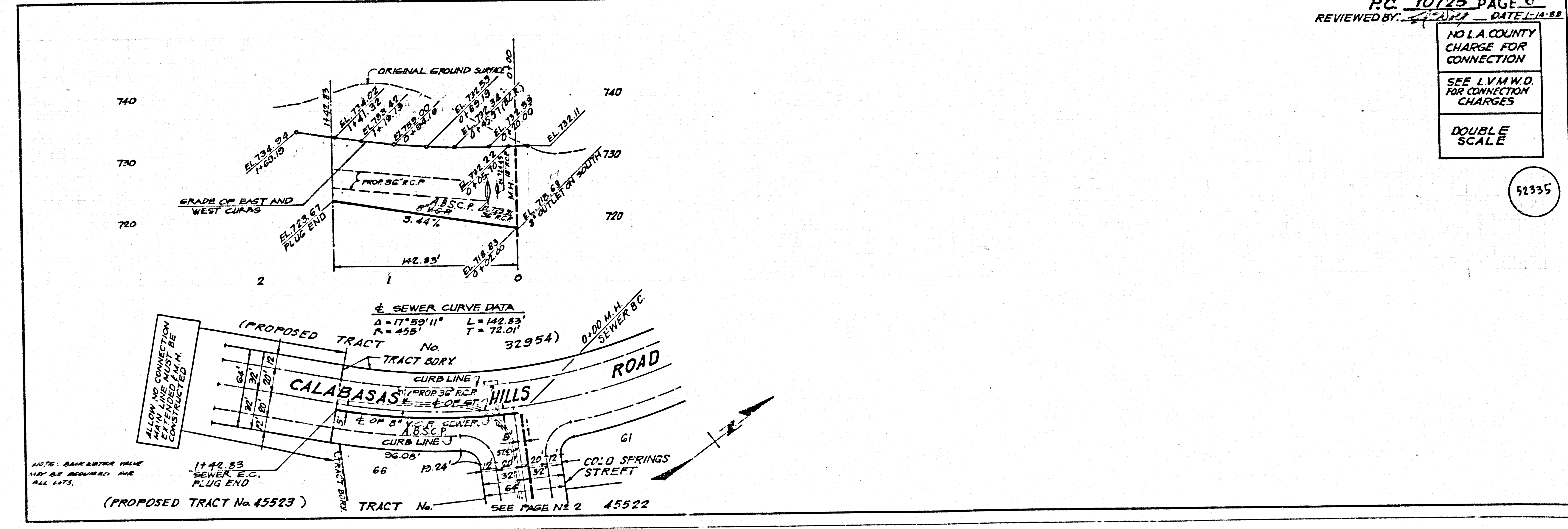


NO L.A. COUNTY  
 CHARGE FOR  
 CONNECTION  
 SEE L.V.M.W.D.  
 FOR CONNECTION  
 CHARGES  
 DOUBLE  
 VERTICAL  
 SCALE



52334

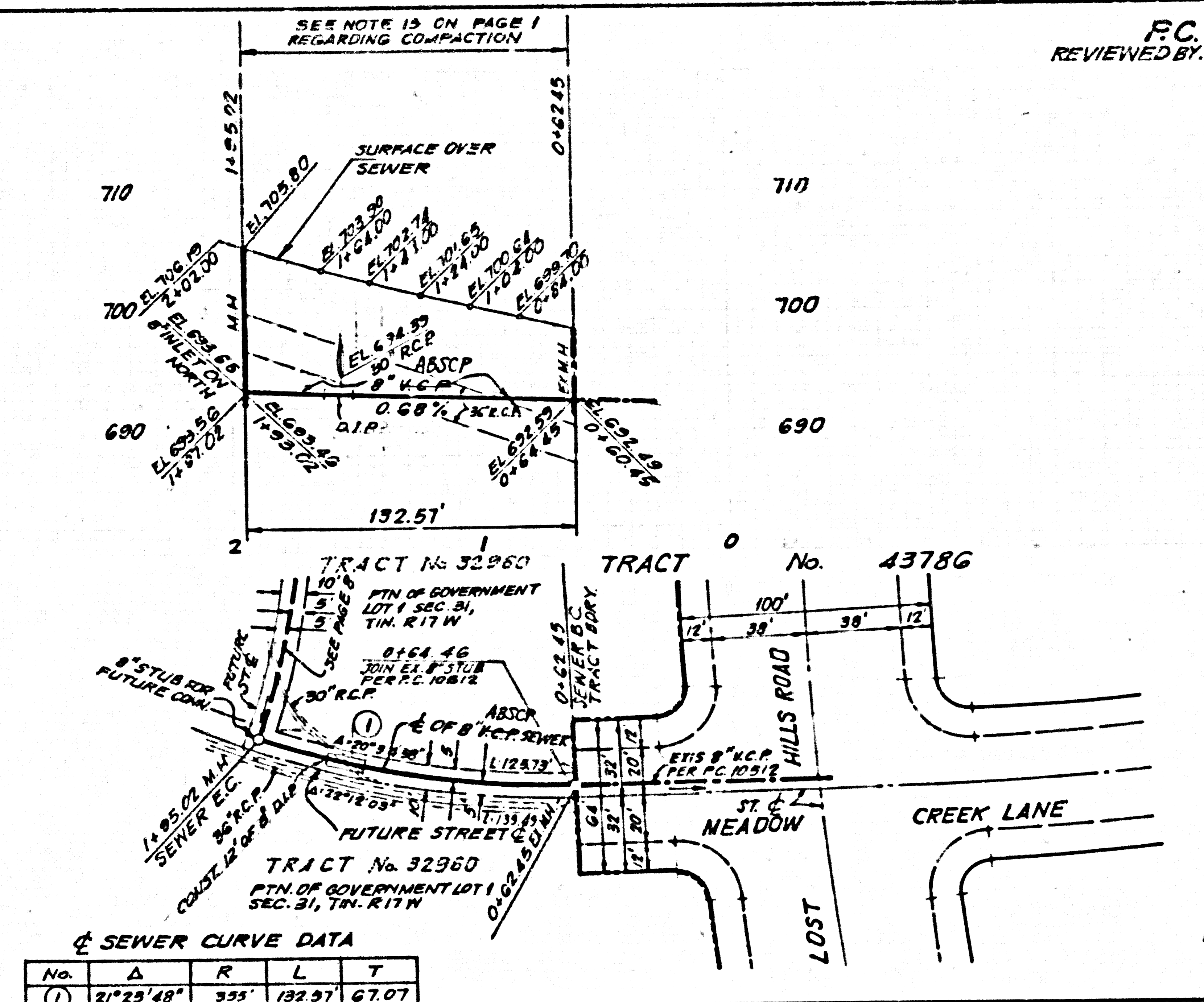
NO L.A. COUNTY  
 CHARGE FOR  
 CONNECTION  
 SEE L.V.M.W.D.  
 FOR CONNECTION  
 CHARGES  
 DOUBLE  
 VERTICAL  
 SCALE



52335



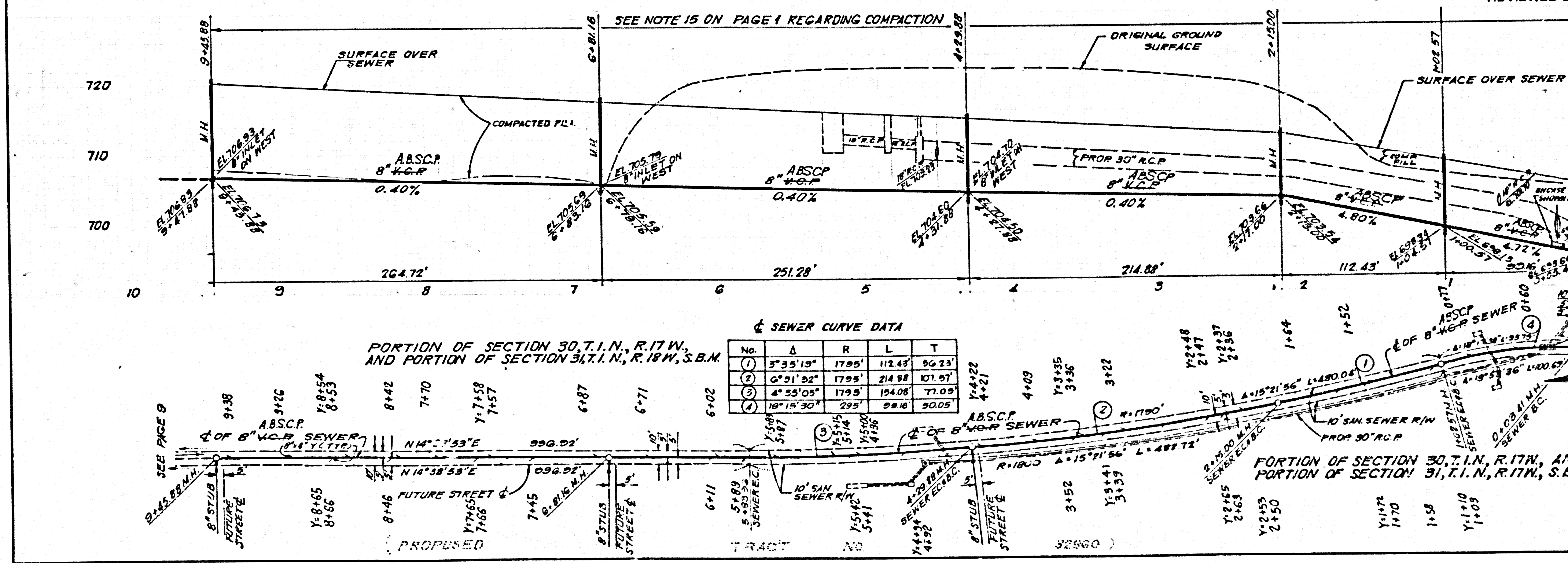
NO L.A. COUNTY  
 CHARGE FOR  
 CONNECTION  
 SEE L.V.M.W.D.  
 FOR CONNECTION  
 CHARGES  
 DOUBLE  
 VERTICAL  
 SCALE



SEWER CURVE DATA

No.	Δ	R	L	T
(1)	21°23'48"	333'	132.51'	67.07'

NO L.A. COUNTY  
 CHARGE FOR  
 CONNECTION  
 SEE L.V.M.W.D.  
 FOR CONNECTION  
 CHARGES  
 DOUBLE  
 VERTICAL  
 SCALE



SEWER CURVE DATA

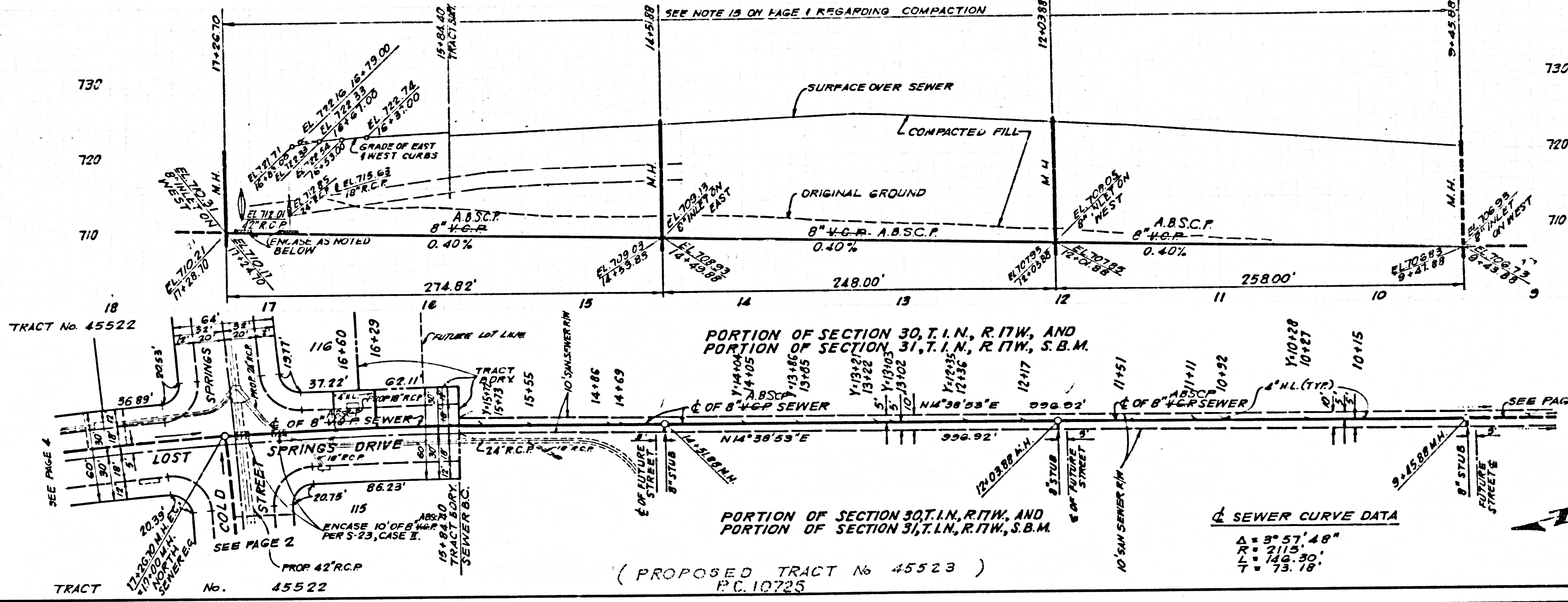
No.	Δ	R	L	T
(1)	3°35'19"	1795'	112.43'	56.23'
(2)	0°51'32"	1795'	214.88'	107.97'
(3)	4°25'05"	1795'	154.08'	71.09'
(4)	18°15'30"	295'	99.18'	50.05'

52336  
 52337  
 52338  
 52339  
 52340  
 52341  
 52342  
 52343  
 52344  
 52345  
 52346  
 52347  
 52348  
 52349  
 52350  
 52351  
 52352  
 52353  
 52354  
 52355  
 52356  
 52357  
 52358  
 52359  
 52360  
 52361  
 52362  
 52363  
 52364  
 52365  
 52366  
 52367  
 52368  
 52369  
 52370  
 52371  
 52372  
 52373  
 52374  
 52375  
 52376  
 52377  
 52378  
 52379  
 52380  
 52381  
 52382  
 52383  
 52384  
 52385  
 52386  
 52387  
 52388  
 52389  
 52390  
 52391  
 52392  
 52393  
 52394  
 52395  
 52396  
 52397  
 52398  
 52399  
 52400



NO L.A. COUNTY CHARGE FOR CONNECTION  
 SEE L.V.M.W.D. FOR CONNECTION CHARGES  
 DOUBLE VERTICAL SCALE

62338



TRACT 4225 PC 10155