

B.M. CY9034 ELEV. 977.372
 ROOM TAG IN C9 2 FT E 8 CR 20 FT.
 N 8 45 FT. E CAL INT. WALMAR RD.
 (OLD TOPANGA CYN RD) S BRENFORD ST.
 MALIBU QUAD. 1980

PRIVATE ENGINEER'S NOTICE TO CONTRACTORS

THE EXISTENCE AND LOCATION OF ANY UNDERGROUND UTILITY PIPES OR STRUCTURES SHOWN ON THESE PLANS ARE OBTAINED BY A SEARCH OF THE AVAILABLE RECORDS TO THE BEST OF OUR KNOWLEDGE THERE ARE NO GUARANTEES AS TO THE ACCURACY OF THE INFORMATION SHOWN ON THESE PLANS. THE CONTRACTOR IS REQUIRED TO TAKE THE NECESSARY PRECAUTIONS TO PROTECT THE UTILITIES SHOWN AND BY OTHER LINES NOT SHOWN ON THESE PLANS. THE CONTRACTOR SHALL BE RESPONSIBLE FOR NOTIFYING UNDERGROUND SERVICE AGENCY AT 1-800-423-7878 FOR WARNING DATA PRIOR TO ANY EXCAVATION OR CONSTRUCTION.

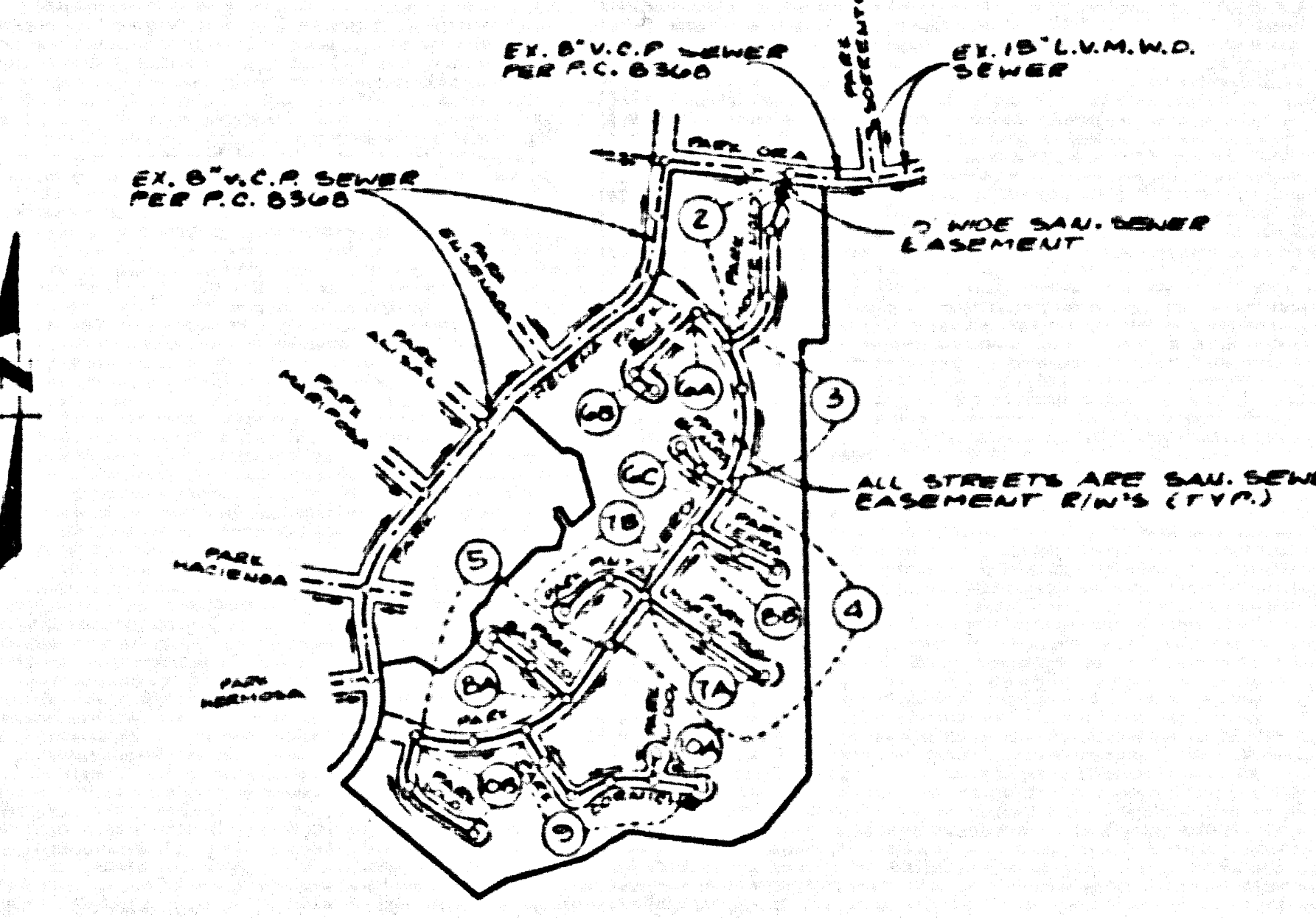
REGISTERED ENGINEER
 R.C.E. NO. 18233

CONSTRUCTION NOTES CONT.

- 16. FULL COMPLIANCE WITH PART IV OF THE SPECIAL PROVISIONS IS REQUIRED FOR THE INSTALLATION OF A 8" S.C.P. COMPOSITE PIPE MANHOLE WITH STOP GASKETS AND CLAMPS ARE REQUIRED FOR THE CONNECTION OF A 8" S.C.P. COMPOSITE PIPE TO MANHOLE STRUCTURE.
- 17. A 8" S.C.P. COMPOSITE PIPE MUST BE USED FOR WYE AND HOUSE LATERAL CONNECTIONS TO A 8" S.C.P. COMPOSITE PIPE MAIN LINE.
- 18. A 8" S.C.P. COMPOSITE PIPE SHALL BE INSTALLED IN CONFORMANCE WITH THE TABLE IN SECTION B.3.1 OF PART IV OF THE SPECIAL PROVISIONS.
- 19. THREE DEGREE DEFLECTION COUPLERS ARE REQUIRED FOR RADIUS OF CURVE LESS THAN 300 FEET WHEN USING 8" S.C.P. COMPOSITE PIPE.
- 20. NO CONNECTIONS FOR DISPOSAL OF INDUSTRIAL WASTE IS ALLOWED FOR A 8" S.C.P. COMPOSITE PIPE IS USED.
- 21. SEWER LINE CURVATURE SHALL NOT BE ACHIEVED BY PULLING OF JOINTS OR BENDING PIPE AND/OR USING PLASTIC TIE INCLUDING A 8" S.C.P. COMPOSITE PIPE.
- 22. ALL WYE AND/OR HOUSE LATERALS ARE TO BE LOCATED AT LEAST FIVE FEET APART AND WHEN POSSIBLE NOT CLOSER THAN FIVE FEET TO ANY MANHOLE.
- 23. A 8" S.C.P. COMPOSITE PIPE IS NOT ACCEPTABLE FOR USE AS MANHOLE COVER.
- 24. ALL WYE BRANCHES ARE TO BE USED FOR CONNECTION TO A 8" S.C.P. COMPOSITE MANHOLE SEWER PIPE.

APPROVAL OF THIS PLAN BY THE LAND DEVELOPMENT DIVISION IS BASED ON A REVIEW BY AN ENGINEERING CONSULTANT UNDER CONTRACT WITH THE COUNTY OF LOS ANGELES.

LOTS 101 THROUGH 108 ARE DESIGNATED AS OPEN SPACE LOTS & RESTRICTED TO NO CONSTRUCTION & WILL NOT BE SERVED BY THIS SEWER.



NOTE:
 1. NUMBERS IN CIRCLES LOCATE MANHOLE NUMBERS.
 2. ALL STREETS IN THIS TRACT ARE PRIVATE STREETS & ALSO ARE SANITARY SEWER EASEMENTS.

INDEX MAP
 TRACT NO. 44815
 P.C. 10727
 SCALE 1" = 100'

GENERAL NOTES:

- 1. ELEVATIONS ARE IN FEET ABOVE M.S.C. & U.S. SEA LEVEL DATUM OF 1929.
- 2. NO REVISIONS SHALL BE MADE IN THESE PLANS WITHOUT THE APPROVAL OF THE DIRECTOR OF PUBLIC WORKS.
- 3. NO REPRESENTATIVE OF THE DEPT. OF PUBLIC WORKS SHALL SURVEY OR LAY OUT ANY PORTION OF THE WORK.
- 4. LOCATIONS TO WHICH THE SEWER LINES ARE TO BE CONNECTED ARE SHOWN ON THESE PLANS AND APPROVED STAKE POINTS FOR TOP OF CURBS, CENTER LINE OF STREETS OR CENTER LINE OF ALLEYS AND SURVEYING POINTS OR PROFILES AT ALL POINTS BE TYPED OR IDENTIFIED. THE GRADE SHALL BE ESTABLISHED SO AS TO CONFORM TO A STRAIGHT LINE DRAWN BETWEEN SAID DESIGNATED POINTS.
- 5. THE PRIVATE ENGINEER SHALL FURNISH THE DEPT. OF PUBLIC WORKS WITH A COMPLETE SET OF PLANS AND LATERALS AND A SET OF 10" X 14" BRANCHES AND SHALL PROVIDE THE DEPT. OF PUBLIC WORKS WITH THE NECESSARY INFORMATION TO BE OBTAINED FROM THE DEPT. OF PUBLIC WORKS. THE SEWER LATERALS SHALL BE CONSTRUCTED IN A STRAIGHT ALIGNMENT AT ALL ANGLES FROM THE MAIN LINE SEWER EXCEPT AS SHOWN ON THE PLANS. HOUSE LATERALS FROM CHIMNEYS SHALL NOT HAVE AN ANGLE OF LESS THAN 45° WITH THE MAIN LINE SEWER. ANY CHANGE IN ALIGNMENT SHALL BE REQUESTED IN WRITING BY THE PRIVATE ENGINEER.
- 6. THE PRIVATE ENGINEER SHALL PROVIDE THE HOUSE LATERAL DEPTH AT THE PROPERTY LINE BELOW THE TOP OF CURB ELEVATION FOR EACH HOUSE LATERAL ON THE GRADE SHEET.
- 7. SEWER WORK CAN BE STARTED THE CONTRACTOR MUST OBTAIN A PERMIT TO EXCAVATE IN PUBLIC STREETS FROM THE CONST. DIV. OF THE L.A. DEPT. OF PUBLIC WORKS. PERMIT OFFICE NO. 8 & PAY A FEE TO THE DIRECTOR OF PUBLIC WORKS, 2250 ALCAZAR ST., L.A., CA 90004, COVER THE COST OF CONSTRUCTION INSURANCE AND RECORD PLANS.
- 8. IF WORK IS TO BE DONE IN A STATE HIGHWAY, A PERMIT MUST BE OBTAINED FROM THE STATE OF CALIFORNIA, DIRECTOR OF HIGHWAYS, 120 SOUTH SPRING STREET, LOS ANGELES, CALIFORNIA.
- 9. APPROVAL OF THIS PLAN BY THE COUNTY OF LOS ANGELES DOES NOT CONSTITUTE A REPRESENTATION AS TO THE ACCURACY OF THE LOCATION OF OR THE EXISTENCE OR NON-EXISTENCE OF ANY UNDERGROUND UTILITY PIPE OR STRUCTURE WITHIN THE LIMITS OF THIS PROJECT. THIS NOTE APPLIES TO ALL PAGES.
- 10. REFER TO SECTION 2, 28.4.1 OF THE STANDARD SPECIFICATIONS REGARDING SAFETY ORDERS.
- 11. PRIOR TO THE ISSUANCE OF THE REQUIRED SEWER CONNECTION PERMIT THE CONTRACTOR SHALL OBTAIN AND FILE WITH THE DEPT. OF PUBLIC WORKS COPIES OF A PLAN TO LOCATE THE SEWER LINES FROM THE CONST. DIV. OF THE DEPT. OF PUBLIC WORKS. PERMIT OFFICE NO. 8, FOR LOCATION AND TRENCHES FROM THE STATE OF CALIFORNIA, DIRECTOR OF HIGHWAYS, SAFETY AND A CERTIFICATE OF WORKER'S COMPENSATION INSURANCE WITH THE DEPARTMENT OF PUBLIC WORKS, 2250 ALCAZAR ST., LOS ANGELES, CALIFORNIA. WORKER'S COMPENSATION INSURANCE IS REQUIRED TO BE OBTAINED 30 DAYS PRIOR TO COMMUNICATION OF PERMIT.

CONSTRUCTION NOTES:

- 1. WORK SHALL BE CONSTRUCTED ACCORDING TO THE STANDARD SPECIFICATIONS FOR PUBLIC WORKS CONSTRUCTION, 1988 EDITION WITH THE SUPPLEMENT AND DEPT. OF PUBLIC WORKS SPECIAL PROVISIONS FOR THE COUNTY OF LOS ANGELES.
- 2. THE CONTRACTOR SHALL NOTIFY THE CONSTRUCTION DIV. PUBLIC WORKS DEPT. TEL. 213-209-8881 AT LEAST 24 HOURS BEFORE STARTING ANY WORK UNDER THIS CONTRACT.
- 3. HOUSE LATERALS TO BE CONSTRUCTED WITH INVERTS AT PROPERTY LINE 4 FEET BELOW CURB GRADE EXCEPT AS NOTED.
- 4. WYE OR THE BRANCHES MAY BE USED FOR CONNECTIONS TO MANHOLE SEWER PIPE AS SHOWN ON THESE PLANS.
- 5. WYE BRANCHES ONLY MAY BE USED FOR CONNECTIONS TO MANHOLE SEWER PIPE AS SHOWN ON THESE PLANS.
- 6. ALL STRUCTURES SHALL BE EITHER BRICK MANHOLES PER S-2 OR PRECAST CONCRETE MANHOLES PER S-28, EXCEPT AS NOTED.
- 7. PROVIDE STAKES ON THE PROPERTY LINE OR PROPERTY LINES PRODUCED AT RIGHT ANGLES TO THE SEWER LINES AT THE CENTER LINE OF EACH MANHOLE.
- 8. MANHOLE TOPS IN UNIMPROVED RIGHTS OF WAY TO BE 36 INCHES ABOVE FINISHED GRADE.
- 9. WITHIN CURB PIPE JOINTS SHALL BE TYPE "C" OR "D" PER STANDARD SPECIFICATIONS SECTION 280-2.
- 10. IF A POWER POLE IS WITHIN THREE FEET OF THE SEWER, THE SEWER SHALL BE ENCASED PER S-22, CASE # TWO FEET ON EACH SIDE FROM THE POINT OF INTERFERENCE.
- 11. ALL JOINTS BETWEEN CAST IRON PIPE AND WITHIN CAST IRON PIPE SHALL BE MADE WITH A RUBBER SLEEVE JOINT, TYPE "C" OR "D" WITHIN BUILDING IF NECESSARY PER STANDARD SPECIFICATIONS SECTION 280-2.
- 12. ALL JOINTS BETWEEN CAST IRON PIPE & A 8" S.C.P. SHALL BE MADE WITH APPROVED FITTINGS.
- 13. SEWERS TO BE TESTED FOR LEAKAGE PER SECTION 280-4 OF THE STANDARD SPECIFICATIONS AND SPECIAL PROVISIONS.
- 14. INSUFFICIENCY OF ALL TESTS SHALL BE REPAIRED PRIOR TO THE COUNTY PUBLIC WORKS DEPT. OR CALIFORNIA STATE HIGHWAY REQUIREMENTS IN ACCORDANCE WITH PERMITS.
- 15. FULL COMPLIANCE WITH SECTION 11.14 OF THE STANDARD SPECIFICATIONS SHALL BE REQUIRED FOR BACKFILL. A STREET CERTIFICATE OF BACKFILL COMPLETION AND SAND FURNISHING BY A QUALIFIED REGISTERED TESTING LABORATORY SHALL BE PROVIDED BY THE PERMITTEE PRIOR TO THE ISSUANCE OF A CERTIFICATE OF PARTIAL ACCEPTANCE.
- 16. SPECIAL BACKFILL IN EASEMENT TRENCHES SHALL BE BACKFILL TRENCH AND REPLACE OTHER EARTH SO AS TO ACHIEVE THE NATURAL OR 1:1 SLOPE GRADES AND SLOPES SHOWN ON THE GRADING PLAN APPROVED FOR THIS DEVELOPMENT. BY THE LAND DEVELOPMENT DIVISION. IN ALL BACKFILL AND EARTH REPAIRS SHALL BE CONFINED TO A MAXIMUM OF 10% OF MAXIMUM DENSITY PER A.S.T.M. METHOD OF TEST D94 97 AS MODIFIED. ACCEPTABLE CERTIFICATION OF SUCH COMPACTION SHALL BE SUBMITTED TO THE CONSTRUCTION DIV. PUBLIC WORKS DEPT.

DOUBLE SCALE

PROFILE, ALIGNMENT AND GRADE OF
SANITARY SEWERS
 TO BE CONSTRUCTED

TRACT NO. 44815
 PRIVATE CONTRACT NO. 10727

INDEX: C-233, E3

5 SHEETS, 10 PAGES

SCALE: VERT. 1" = 8' HORIZ. 1" = 40'

MAY 1987
 PREPARED IN THE OFFICES OF
 LIND & HILLERUD, INC.
 2085 HUNTINGTON DRIVE
 SAN ANTONIO, CALIF. 78222
 BY: J. L. HILLERUD REG. C.E. 18233



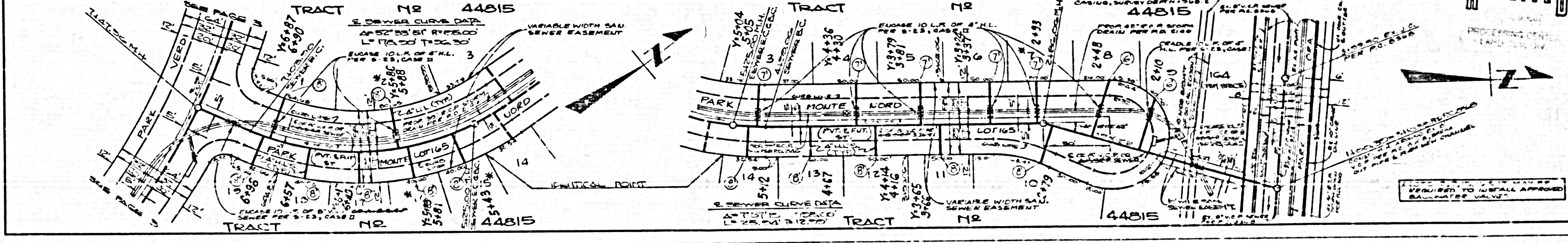
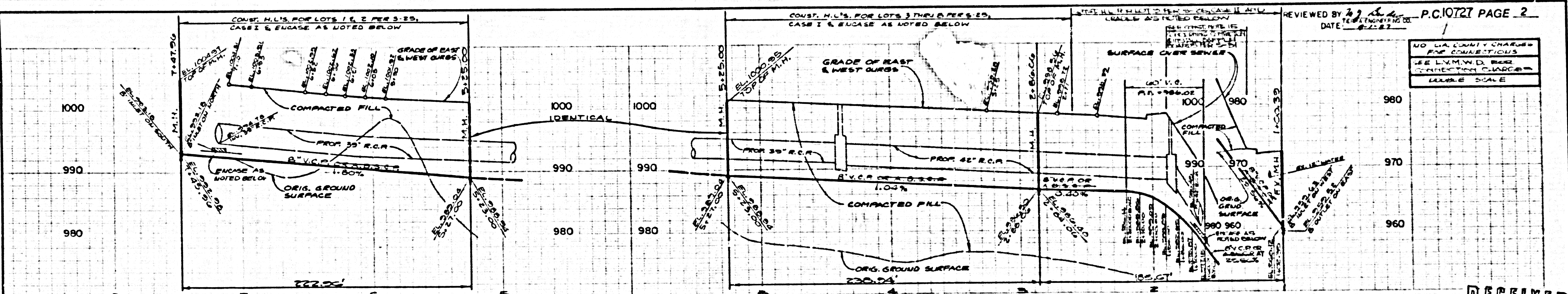
THE FOLLOWING LATEST REVISED STANDARD PLANS ON FILE IN THE OFFICE OF THE DEPARTMENT OF PUBLIC WORKS SHALL APPLY TO THE CONSTRUCTION OF THIS PROJECT:

LEAKAGE	S-1
MINIMUM PUBLIC SAFETY REQUIREMENTS	S-2
BRICK MANHOLE	S-3
STANDARD MANHOLE STOP	S-4
BACKING FOR BRICK PIPE	S-5
CASTING AND ENCASEMENT	S-6
WYE OR THE BRANCH	S-7
ALLOWED TRENCH WIDTH	S-8
LOCATING MANHOLE FRAMES AND COVER	S-9
NON-APPROVED PRECAST CONCRETE MANHOLE	S-10
SPECIAL HOUSE LATERALS	S-11
ENGLISH PROTECTION IN STEEP SLOPE	S-12

COUNTY OF LOS ANGELES, CALIFORNIA

THOMAS A. IDEMANSON, DIRECTOR
 DEPARTMENT OF PUBLIC WORKS
 APPROVED: [Signature] 9/21/87
 DATE: 12-16-87

REVIEWED BY: [Signature] 9-1-87
 DATE: 12-16-87
 CALABASAS BLDG. DIST. 9.1



NO L.A. COUNTY CHARGES FOR CONNECTIONS
 SEE L.V.M.H.D. BASE
 CONNECTION CHARGES
 LATEST SCALE

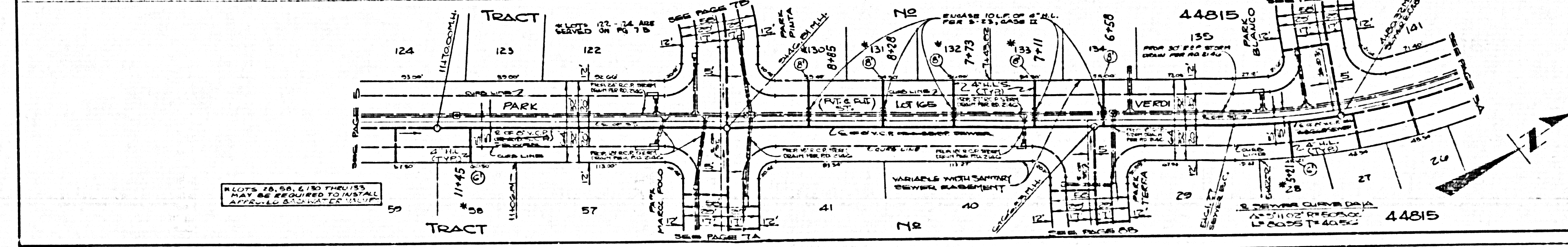
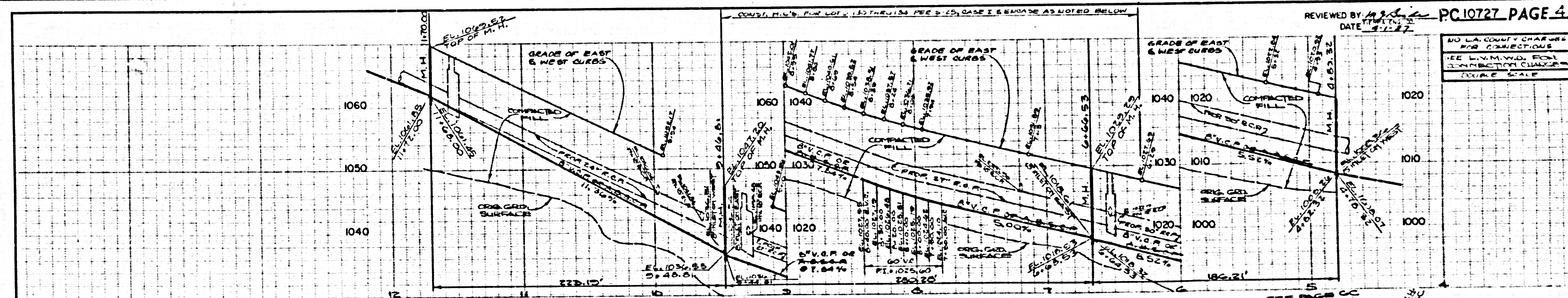
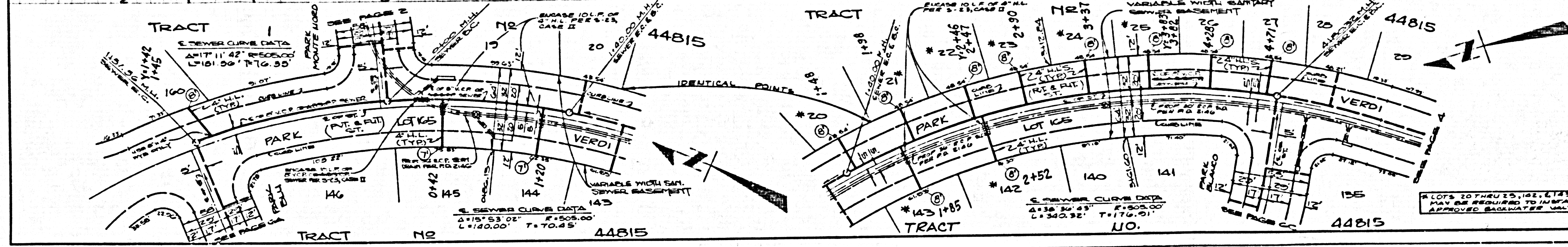
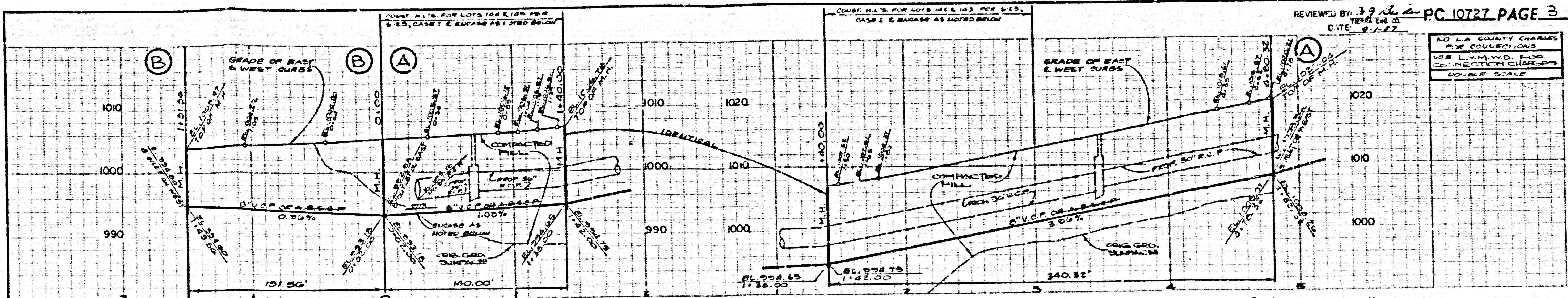
RECEIVED

NEED TO BE VERIFIED TO INSTALL APPROVED
 MATERIALS VALUES

1

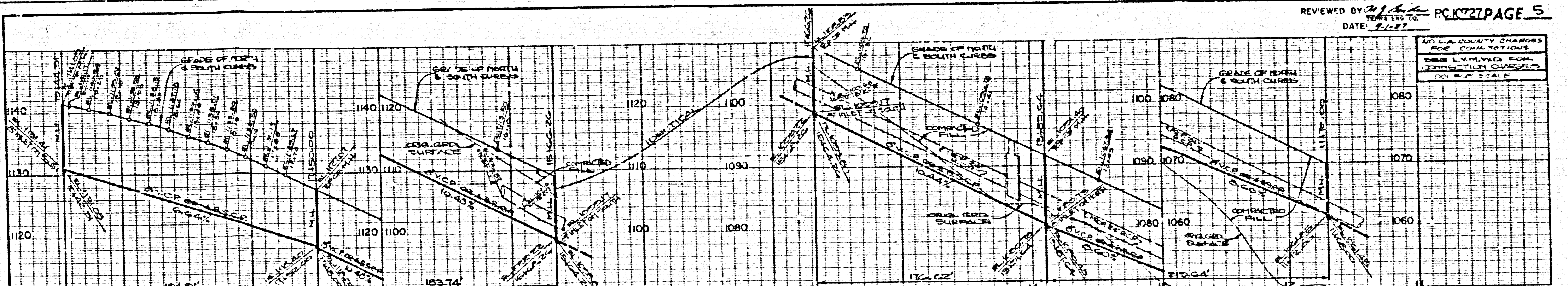
PC 1051 09

21844 ON TRACT



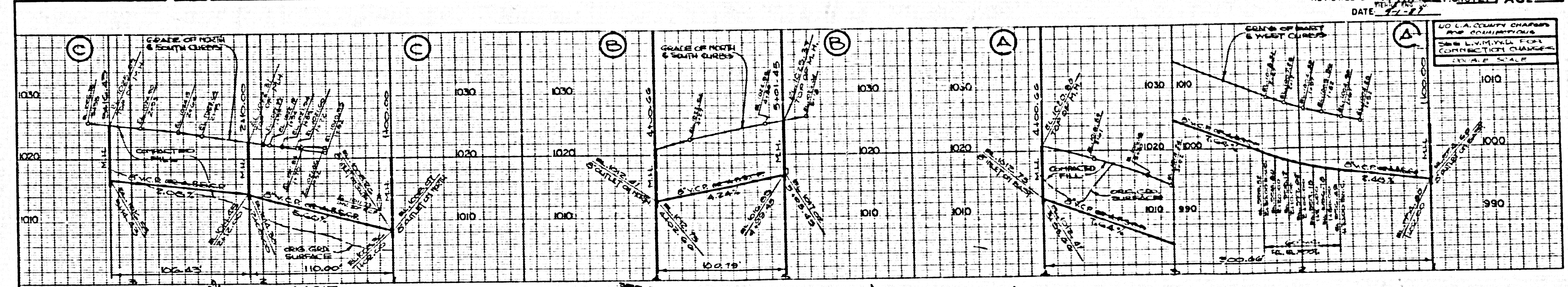
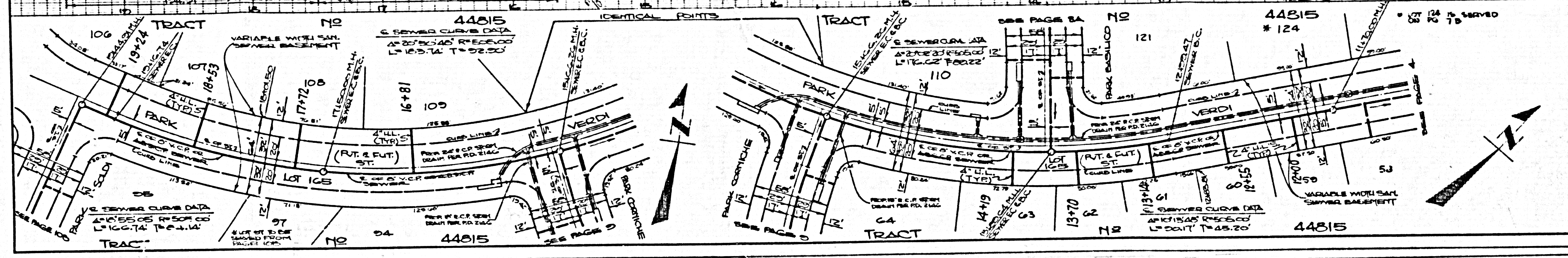
PC 10727 PAGE 3

PC 10727 PAGE 4



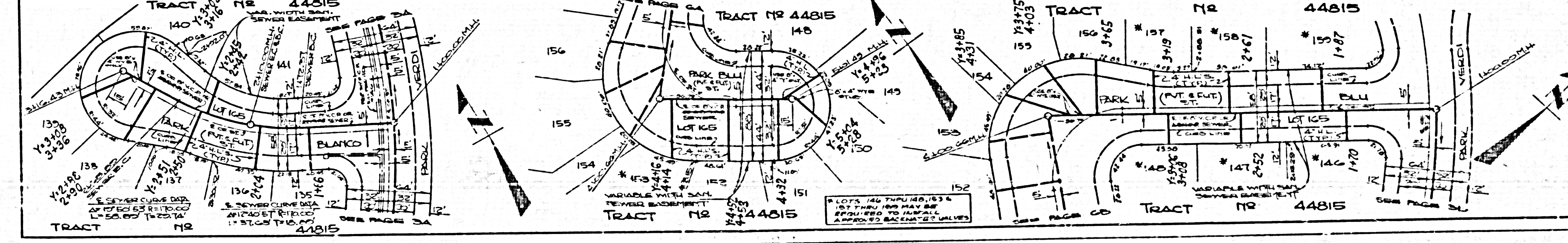
REVIEWED BY: *[Signature]* PC 10727 PAGE 5
 DATE: 11/17/11

NO L.A. COUNTY CHARGES FOR CORRECTIONS
 SEE L.V.M.V.D. FOR EXISTING CHANGES
 IN A SCALE



REVIEWED BY: *[Signature]* PC 10727 PAGE 6
 DATE: 11/17/11

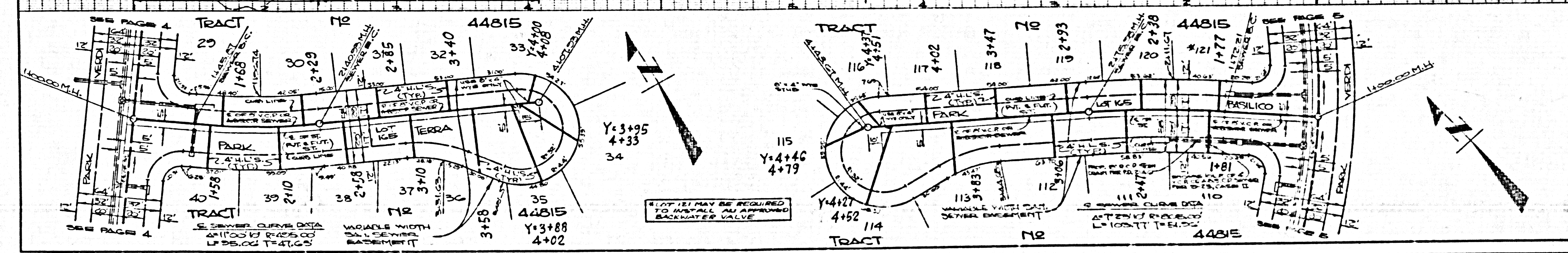
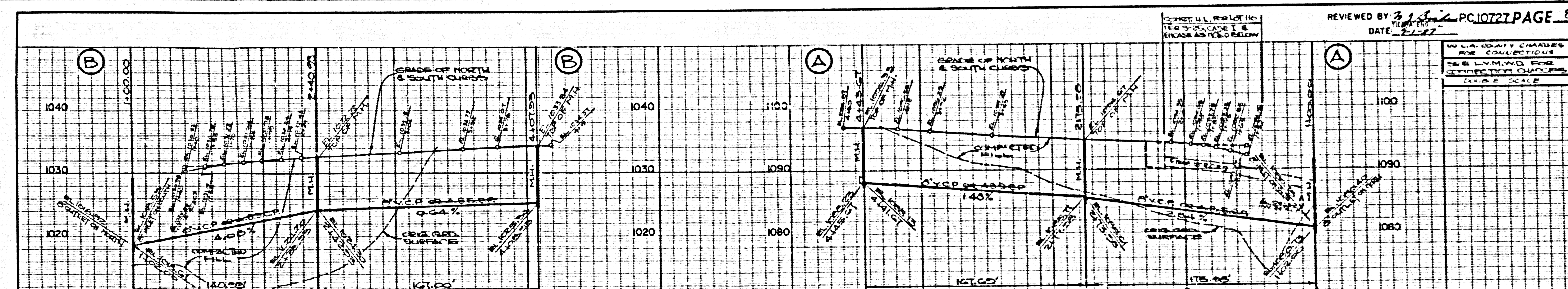
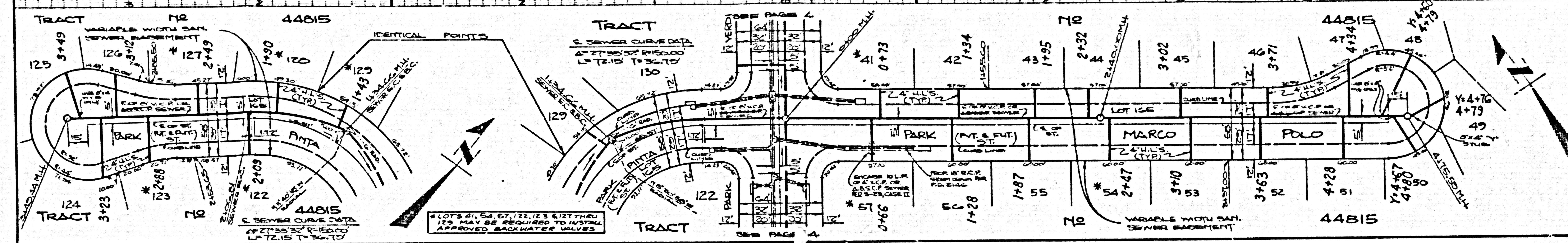
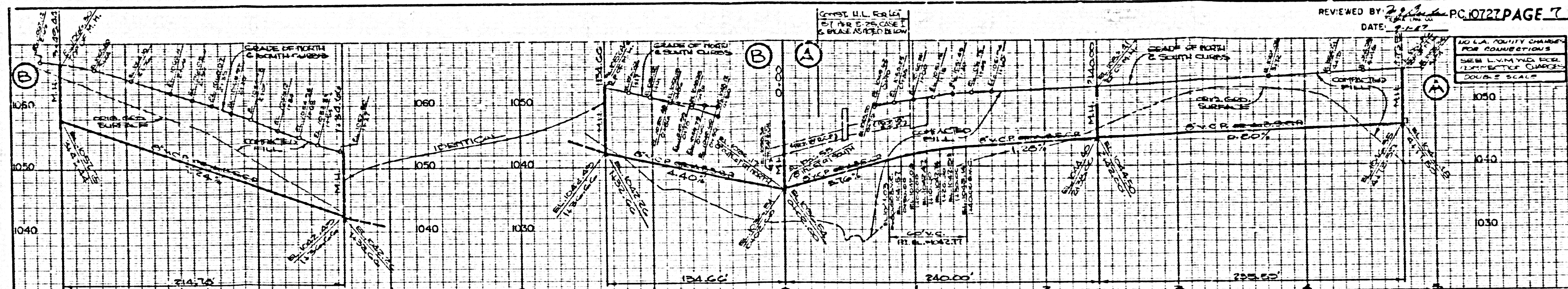
NO L.A. COUNTY CHARGES FOR CORRECTIONS
 SEE L.V.M.V.D. FOR EXISTING CHANGES
 IN A SCALE



3

15501 29

21844 21 TRACT



4

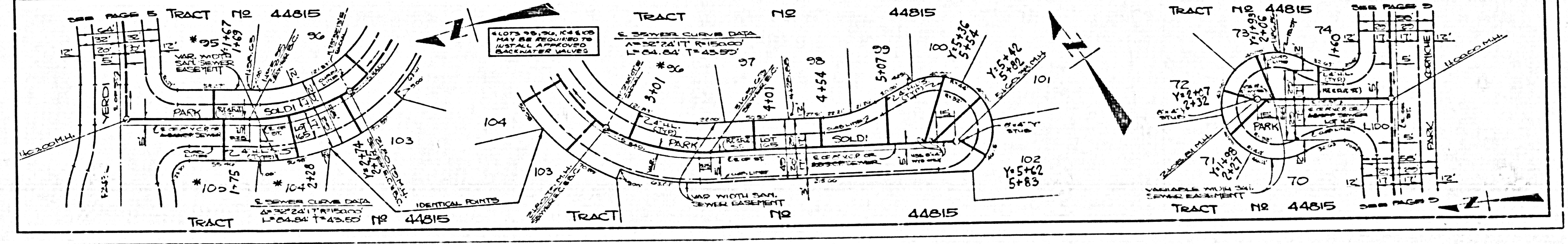
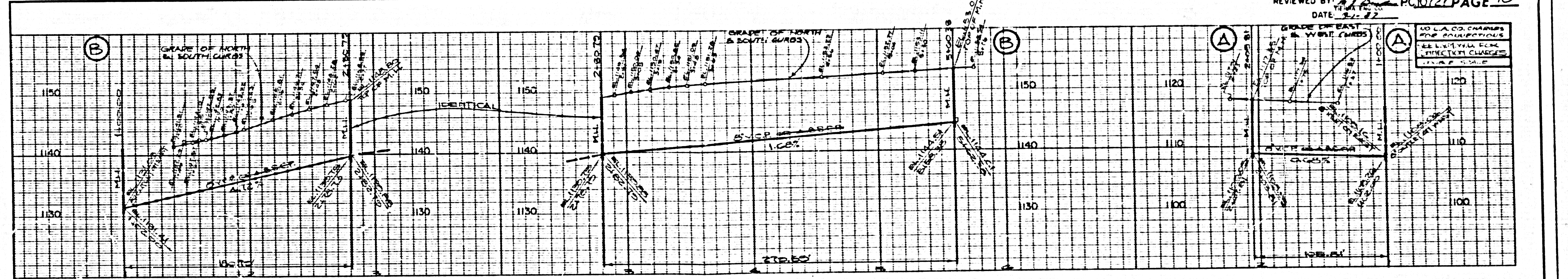
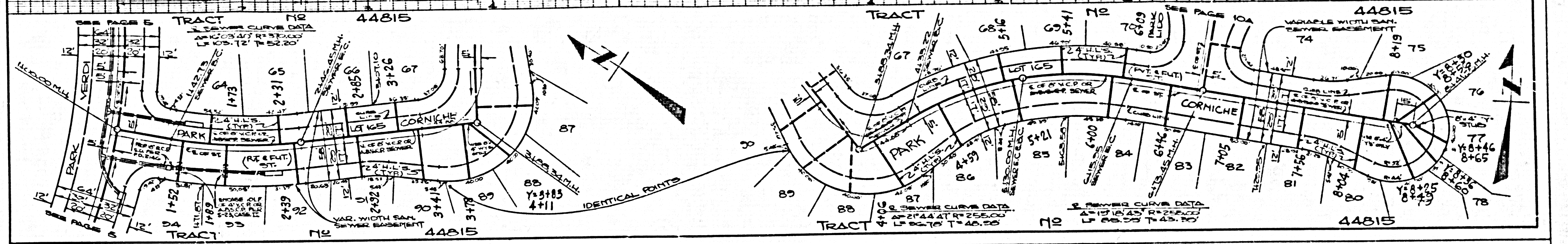
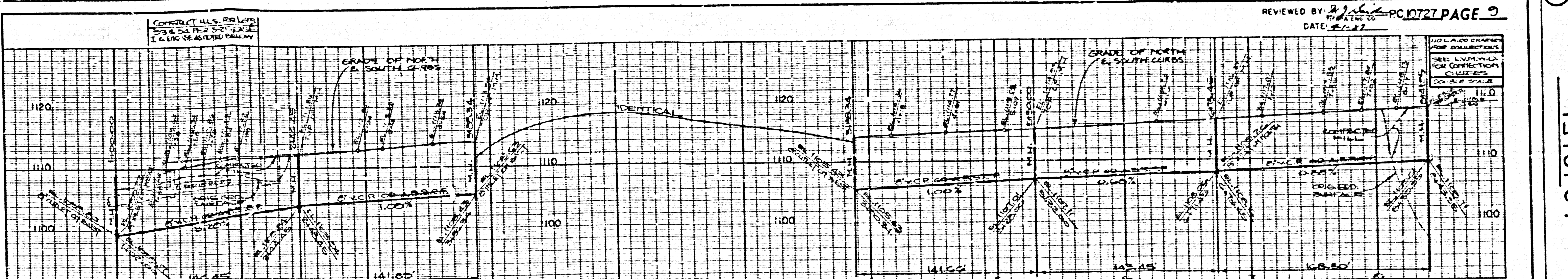
15101-9

REVIEWED BY *[Signature]* PC10727 PAGE 7
DATE: 2/1/77

NO L.A. COUNTY CHANGES FOR CONNECTIONS SEE L.V.M. AND E.C.L. EXCEPT FOR QUANTITIES DOUBLE SCALE

REVIEWED BY *[Signature]* PC10727 PAGE 8
DATE: 2/1/77

NO L.A. COUNTY CHANGES FOR CONNECTIONS SEE L.V.M. AND E.C.L. EXCEPT FOR QUANTITIES DOUBLE SCALE



151013C

151013C