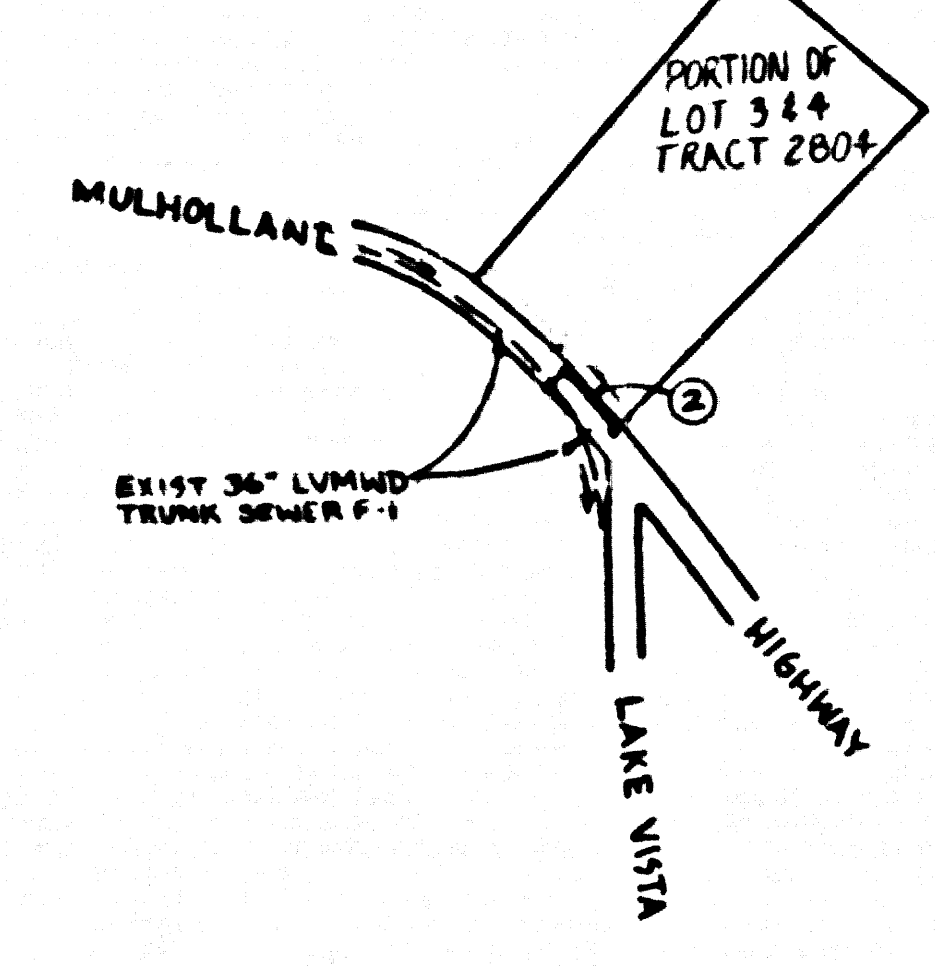


B.M. CY 9126 ELEV. 799.166
 CSBM MON 6IN UP 21 FT. S C/L MULHOLLAND
 HWY. 8 234 FT. E C/L LAKE VISTA DR 4 FT. S
 P.P. NO. 543176-H MKD (BM 58-45A 1969) 2IN IP 3FT UP
 2 FT. S. MALIBU QUAD. 19 80

REVISION # 1 DATE 1-26-88
 REVISE PROFILE PAGE 2 FINISHED GRADES
 STA 1154.13 TO STA 3+41.53 INCLUDING
 VERTICAL CURVE, CHANGED LOCATION OF
 18" C.M.P. AND ENCASUREMENT
 PLAN PAGE 2 CHANGED LOCATION OF
 18" C.M.P. AND ENCASUREMENT
 TYPE
 APPROVED *Samuel G. Hill* 1-26-88
 DEPT. OF PUBLIC WORKS



INDEX MAP
 SCALE 1" = 600'
 P.C. NO. 10729
 SEWERS IN MULHOLLAND HIGHWAY
 NOTE: NUMBER IN CIRCLE
 INDICATES PAGE NUMBER

DOUBLE SCALE

PRIVATE ENGINEERS NOTE TO CONTRACTORS

1. THE EXISTENCE AND LOCATION OF ANY UNDERGROUND UTILITY PIPES OR STRUCTURES SHOWN ON THESE PLANS WERE OBTAINED BY A SEARCH OF AVAILABLE RECORDS. TO THE BEST OF OUR KNOWLEDGE THERE ARE NO EXISTING UTILITIES EXCEPT AS SHOWN ON THIS MAP.
 THE CONTRACTOR IS REQUIRED TO TAKE DUE PRE-CAUTIONARY MEASURES TO PROTECT THE UTILITY LINES SHOWN, AND OTHER LINES NOT OF RECORD OR NOT SHOWN ON THESE PLANS.

GENERAL NOTES:

1. ALL WORK SHALL BE IN ACCORDANCE WITH THE STANDARD SPECIFICATIONS FOR PUBLIC WORKS CONSTRUCTION (1988 EDITION) WITH THE SUPPLEMENTS AND DEPT. OF PUBLIC WORKS SPECIAL PROVISIONS FOR THE CONSTRUCTION OF SANITARY SEWERS DATED DEPT. 21, 1978.
2. THE CONTRACTOR SHALL NOTIFY THE CONSTRUCTION DIVISION BY TELEPHONE (818) 226-6226 AT LEAST TWENTY-FOUR HOURS BEFORE STARTING ANY WORK UNDER THIS CONTRACT.
3. HOUSE LATERALS TO BE CONSTRUCTED WITH INVERTS AT PROPERTY LINE 8 FEET BELOW CURB GRADE EXCEPT AS NOTED.
4. WYE OR TEE BRANCHES MAY BE USED FOR CONNECTIONS TO MANHOLE EXCEPT AS NOTED.
5. ALL STRUCTURES SHALL BE EITHER BRICK MANHOLES PER 8-2.8 OR PRECAST CONCRETE MANHOLES PER 8-2.8 EXCEPT AS NOTED.
6. PROVIDE STAKES ON THE PROPERTY LINE OR PROPERTY LINES PRODUCED AT RIGHT ANGLES TO THE SEWER LINE AT THE CENTER LINE OF EACH MANHOLE.
7. MANHOLE TOPS IN UNIMPROVED AREAS TO BE 24 INCHES ABOVE FINISHED GRADE.
8. INFRARED CLAY PIPE JOINTS SHALL BE TYPE "D" OR "E" PER STANDARD SPECIFICATIONS SECTION 808-3.
9. IF A POWER POLE IS WITHIN THREE FEET OF THE SEWER, THE SEWER SHALL BE ENCASED PER 8-2.8 CASE B TWO FEET ON EACH SIDE FROM THE POINT OF INTERFERENCE.
10. IF DURING THE COURSE OF CONSTRUCTION IT IS DETERMINED THAT THERE IS LESS THAN FOUR FEET OF COVER OVER THE TOP OF A MAIN LINE OR HOUSE LATERAL SEWER WHICH IS NOT INDICATED ON THE PLANS, THE PIPE SHALL BE ENCASED PER 8-2.8 CASE B UNLESS OTHERWISE APPROVED BY THE DEPT. OF PUBLIC WORKS.
11. ALL JOINTS BETWEEN CAST IRON PIPE AND WITNEDED CLAY PIPE SHALL BE MADE WITH A RUBBER SLEEVE JOINT, TYPE "C" OR "D" WITH BURR IF NECESSARY PER STANDARD SPECIFICATIONS SECTION 808-3.
12. SEWERS TO BE TESTED FOR LEAKAGE PER SECTION 808-1.4 OF THE STANDARD SPECIFICATIONS AND SPECIAL PROVISIONS.
13. REINFORCE ALL TRENCHES WITHIN PAVED AREAS TO MEET L.A. COUNTY ROAD DEPT. OR CALIFORNIA STATE HIGHWAY REQUIREMENTS IN ACCORDANCE WITH PERMITS.
14. FULL COMPLIANCE WITH SECTION 306-1.3.4 OF THE STD. SPECS. WILL BE REQUIRED FOR BACKFILL IN STREETS CERTIFICATION OF BACKFILL CONNECTION AND SAND EQUIVALENTS BY A QUALIFIED REFERENCED TESTING LABORATORY SHALL BE PROVIDED BY THE PERMITTEE PRIOR TO THE ISSUANCE OF A CERTIFICATE OF PARTIAL ACCEPTANCE.
15. SPECIAL BACKFILL IN SUBURBAN CONSTRUCTION (A) BACKFILL TRENCH AND REPLACE OTHER EARTH SO AS TO ACHIEVE THE INITIAL OR FINISHED GRADES AND SLOPES SHOWN ON THE DRAINING PLAN APPROVED FOR THIS DEVELOPMENT BY THE LAND DEVELOPMENT DIVISION. (B) ALL BACKFILL AND EARTH REPLACES SHALL BE COMPACTED TO A MINIMUM OF 90% OF MAXIMUM DENSITY PER A.S.T.M. METHOD OF TEST OR BY AN APPROVED ACCEPTABLE CERTIFICATION OF SUCH COMPACTION SHALL BE SUBMITTED TO THE CONSTRUCTION DIVISION.

16. FULL COMPLIANCE WITH PART IV OF THE SPECIAL PROVISIONS IS REQUIRED FOR THE INSTALLATION OF A.B.S. COMPOSITE PIPE.
17. MANHOLE WATER STOP GASKETS AND CLAMPS ARE REQUIRED FOR THE CONNECTION OF A.B.S. COMPOSITE PIPE TO MANHOLE STRUCTURES.
18. A.B.S. SOLID WALL PIPE MUST BE USED FOR WYE AND HOUSE LATERAL CONNECTIONS TO A.B.S. COMPOSITE MANHOLE SEWER PIPE.
19. A.B.S. COMPOSITE PIPE SHALL BE BENDED IN CONFORMANCE WITH THE TABLE IN SECTION 8-1.1 OF PART IV OF THE SPECIAL PROVISIONS.
20. TYPED SIGNED DIMENSION COUPLES ARE REQUIRED FOR RADIUS OF CURVATURES LESS THAN 250 FEET WHEN USING "D" A.B.S. COMPOSITE PIPE.
21. NO CONNECTIONS FOR DISPOSAL OF INDUSTRIAL WASTE IS ALLOWED IF A.B.S. COMPOSITE PIPE IS USED.
22. SEWER LINE CURVATURES SHALL NOT BE ACHIEVED BY PULLING OF JOISTS OR BEVELING PIPE ENDS WHEN USING PLASTIC PIPE INCLUDING A.B.S. COMPOSITE PIPE.
23. ALL WYE AND/OR HOUSE LATERALS ARE TO BE LOCATED AT LEAST FIVE FEET APART AND WHEN POSSIBLE NOT CLOSER THAN FIVE FEET TO ANY MANHOLE.
24. A.B.S. SOLID WALL PIPE IS NOT ACCEPTABLE FOR AN MANHOLE SEWER.
25. ONLY WYE BRANCHES ARE TO BE USED FOR CONNECTION TO A.B.S. COMPOSITE MANHOLE SEWER PIPE.

NO CONNECTION FOR THE DISPOSAL OF INDUSTRIAL WASTE SHALL BE MADE TO SEWER SHOWS ON THESE DRAWINGS UNTIL A PERMIT FOR INDUSTRIAL WASTEWATER DISCHARGE HAS BEEN ISSUED BY THE SANITATION DISTRICTS FOR SAID CONNECTION.

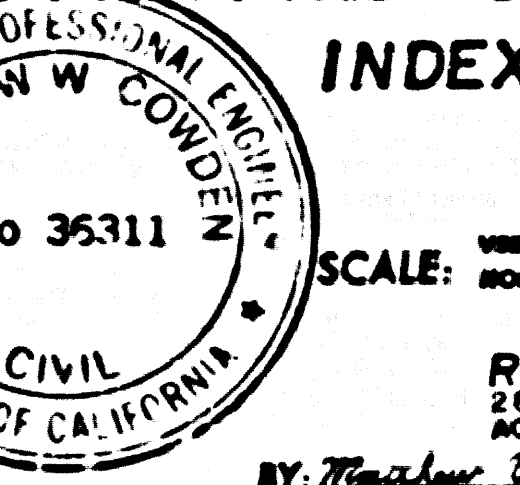
SEWERS BEING LAYED OR CONSTRUCTION OF A COUNTY SANITATION DISTRICT SEWER AND PRIOR TO FINAL ACCEPTANCE OF THE PROJECT, SANITATION DISTRICT INSPECTOR SHALL BE NOTIFIED BY PHONE 818-226-6226 SO THAT REFERENCED INSPECTION CAN BE MADE.

CONSTRUCTION NOTES:

1. WORK SHALL BE CONSTRUCTED ACCORDING TO THE STANDARD SPECIFICATIONS FOR PUBLIC WORKS CONSTRUCTION (1988 EDITION) WITH THE SUPPLEMENTS AND DEPT. OF PUBLIC WORKS SPECIAL PROVISIONS FOR THE CONSTRUCTION OF SANITARY SEWERS DATED DEPT. 21, 1978.
2. THE CONTRACTOR SHALL NOTIFY THE CONSTRUCTION DIVISION BY TELEPHONE (818) 226-6226 AT LEAST TWENTY-FOUR HOURS BEFORE STARTING ANY WORK UNDER THIS CONTRACT.
3. HOUSE LATERALS TO BE CONSTRUCTED WITH INVERTS AT PROPERTY LINE 8 FEET BELOW CURB GRADE EXCEPT AS NOTED.
4. WYE OR TEE BRANCHES MAY BE USED FOR CONNECTIONS TO MANHOLE EXCEPT AS NOTED.
5. ALL STRUCTURES SHALL BE EITHER BRICK MANHOLES PER 8-2.8 OR PRECAST CONCRETE MANHOLES PER 8-2.8 EXCEPT AS NOTED.
6. PROVIDE STAKES ON THE PROPERTY LINE OR PROPERTY LINES PRODUCED AT RIGHT ANGLES TO THE SEWER LINE AT THE CENTER LINE OF EACH MANHOLE.
7. MANHOLE TOPS IN UNIMPROVED AREAS TO BE 24 INCHES ABOVE FINISHED GRADE.
8. INFRARED CLAY PIPE JOINTS SHALL BE TYPE "D" OR "E" PER STANDARD SPECIFICATIONS SECTION 808-3.
9. IF A POWER POLE IS WITHIN THREE FEET OF THE SEWER, THE SEWER SHALL BE ENCASED PER 8-2.8 CASE B TWO FEET ON EACH SIDE FROM THE POINT OF INTERFERENCE.
10. IF DURING THE COURSE OF CONSTRUCTION IT IS DETERMINED THAT THERE IS LESS THAN FOUR FEET OF COVER OVER THE TOP OF A MAIN LINE OR HOUSE LATERAL SEWER WHICH IS NOT INDICATED ON THE PLANS, THE PIPE SHALL BE ENCASED PER 8-2.8 CASE B UNLESS OTHERWISE APPROVED BY THE DEPT. OF PUBLIC WORKS.
11. ALL JOINTS BETWEEN CAST IRON PIPE AND WITNEDED CLAY PIPE SHALL BE MADE WITH A RUBBER SLEEVE JOINT, TYPE "C" OR "D" WITH BURR IF NECESSARY PER STANDARD SPECIFICATIONS SECTION 808-3.
12. SEWERS TO BE TESTED FOR LEAKAGE PER SECTION 808-1.4 OF THE STANDARD SPECIFICATIONS AND SPECIAL PROVISIONS.
13. REINFORCE ALL TRENCHES WITHIN PAVED AREAS TO MEET L.A. COUNTY ROAD DEPT. OR CALIFORNIA STATE HIGHWAY REQUIREMENTS IN ACCORDANCE WITH PERMITS.
14. FULL COMPLIANCE WITH SECTION 306-1.3.4 OF THE STD. SPECS. WILL BE REQUIRED FOR BACKFILL IN STREETS CERTIFICATION OF BACKFILL CONNECTION AND SAND EQUIVALENTS BY A QUALIFIED REFERENCED TESTING LABORATORY SHALL BE PROVIDED BY THE PERMITTEE PRIOR TO THE ISSUANCE OF A CERTIFICATE OF PARTIAL ACCEPTANCE.
15. SPECIAL BACKFILL IN SUBURBAN CONSTRUCTION (A) BACKFILL TRENCH AND REPLACE OTHER EARTH SO AS TO ACHIEVE THE INITIAL OR FINISHED GRADES AND SLOPES SHOWN ON THE DRAINING PLAN APPROVED FOR THIS DEVELOPMENT BY THE LAND DEVELOPMENT DIVISION. (B) ALL BACKFILL AND EARTH REPLACES SHALL BE COMPACTED TO A MINIMUM OF 90% OF MAXIMUM DENSITY PER A.S.T.M. METHOD OF TEST OR BY AN APPROVED ACCEPTABLE CERTIFICATION OF SUCH COMPACTION SHALL BE SUBMITTED TO THE CONSTRUCTION DIVISION.

SANITARY SEWERS
 TO BE CONSTRUCTED IN
MULHOLLAND HWY.

PRIVATE CONTRACT NO. 10729
 INDEX: C-251



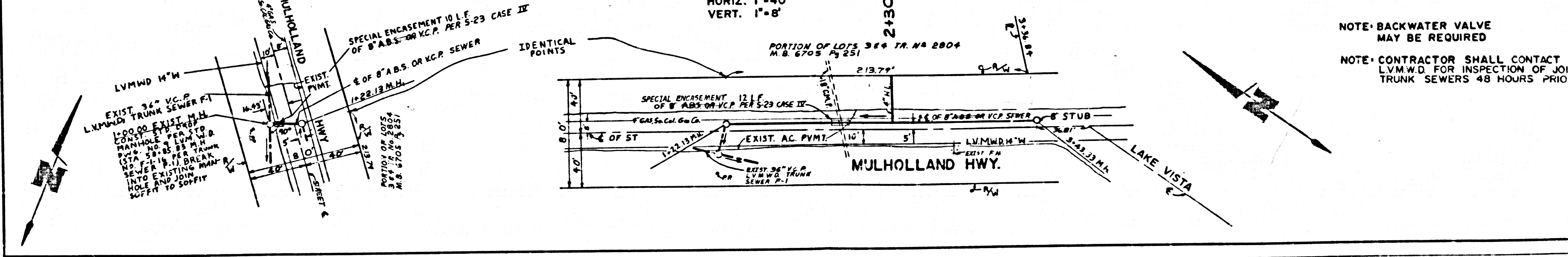
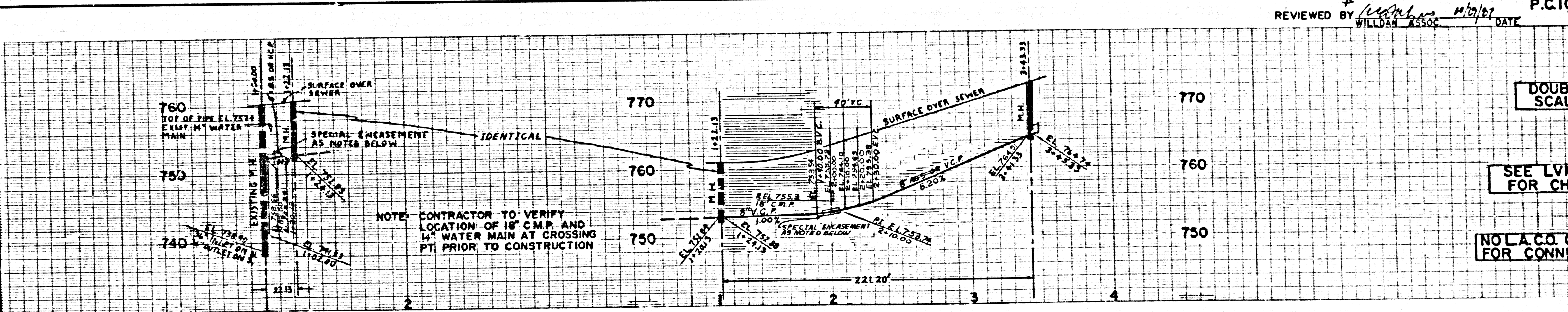
1 SHEET, 2 PAGES
 SCALE: HORIZ. 1" = 40' VERT. 1" = 8'
 MAY 1, 1987
 PREPARED IN THE OFFICES OF
ROSECRANS & ASSOCIATES
 2825 AGOURA RD., SUITE NO. 1
 BOULDER, COLORADO 80501 (303) 440-7443
 BY: *Matthew W. Conley*
 REG. C.E. No. 35311
 EXP. 6/30/88

THE FOLLOWING LISTED REVISED STANDARD PLANS ON FILE IN THE OFFICE OF THE DEPT. OF PUB. WORKS SHALL APPLY TO THE CONSTRUCTION OF THIS PROJECT.

SEWER	8-2
BRICK MANHOLE	8-2
PRECAST CONCRETE MANHOLE	8-2
SEWER FOR SPUR PIPES	8-2
CHASING AND ENCASUREMENT	8-2
WYE OR TEE BRANCH	8-2
ALIGNMENT FINISH GRADE	8-2
BRICK MANHOLE GRADE AND COVER	8-2
NON-REINFORCED PRECAST CONCRETE MANHOLE	8-2
LVMWD STD. DROP MANHOLE	8-2

COUNTY OF LOS ANGELES, CALIFORNIA
 THOMAS A. TIDEMANSON
 DIRECTOR OF PUBLIC WORKS
 APPROVED: *Dean E. Phillips* 11/2/87
 WILLDAN ASSOCIATES INC.
 1801 S. WILSON AVE., SUITE 200
 CARLSBAD, CALIF. 92008
 CALIFORNIA BLDG. DIST. 31

APPROVAL OF THIS PLAN BY THE LAND DEVELOPMENT DIVISION IS BASED ON A REVIEW BY AN ENGINEERING CONSULTANT UNDER CONTRACT WITH THE COUNTY OF LOS ANGELES.



REVIEWED BY *Willdan Assoc.* 11/2/87
 WILLDAN ASSOC. DATE

DOUBLE SCALE

SEE LVMWD FOR CHARGES

NO L.A. CO. CHARGES FOR CONNECTION

NOTE: BACKWATER VALVE MAY BE REQUIRED

NOTE: CONTRACTOR SHALL CONTACT LVMWD FOR INSPECTION OF JOINING TRUNK SEWERS 48 HOURS PRIOR TO WORK