

CONSTRUCTION NOTES CONT'D.

- FULL COMPLIANCE WITH PART IV OF THE SPECIAL PROVISIONS IS REQUIRED FOR THE INSTALLATION OF ABS COMPOSITE PIPE.
- MANHOLE WATER STOP GASKETS AND CLAMPS ARE REQUIRED FOR THE CONNECTION OF ABS COMPOSITE PIPE TO MANHOLE STRUCTURES.
- ABS SOLID WALL PIPE MUST BE USED FOR WYE AND HOUSE LATERAL CONNECTIONS TO ABS COMPOSITE MAINLINE SEWER PIPE.
- ABS COMPOSITE PIPE SHALL BE SERVED IN CONFORMANCE WITH THE TABLE IN SECTION 5-3.1 OF PART IV OF THE SPECIAL PROVISIONS.
- THREE DEGREE DEFLECTION COUPLERS ARE REQUIRED FOR RADIUS OF CURVATURE LESS THAN 300 FEET WHEN USING 8" ABS COMPOSITE PIPE.
- NO CONNECTIONS FOR DISPOSAL OF INDUSTRIAL WASTE IS ALLOWED IF ABS COMPOSITE PIPE IS USED.
- SEWER LINE CURVATURE SHALL NOT BE ACHIEVED BY PULLING OF JOINTS OR REVELING PIPE ENDS WHEN USING PLASTIC PIPE INCLUDING ABS COMPOSITE PIPE.
- ALL WYES AND/OR HOUSE LATERALS ARE TO BE LOCATED AT LEAST FIVE FEET APART AND WHEN POSSIBLE NOT CLOSER THAN FIVE FEET TO ANY MANHOLE.
- ABS SOLID WALL PIPE IS NOT ACCEPTABLE FOR USE AS MAINLINE SEWER.
- ONLY WYE BRANCHES ARE TO BE USED FOR CONNECTION TO ABS COMPOSITE MAINLINE SEWER PIPE.

APPROVAL OF THIS PLAN BY THE LAND DEVELOPMENT DIVISION IS BASED ON A REVIEW BY AN ENGINEERING CONSULTANT UNDER CONTRACT WITH THE COUNTY OF LOS ANGELES. NO CONNECTION FOR THE DISPOSAL OF INDUSTRIAL WASTE SHALL BE MADE TO SEWERS SHOWN ON THESE DRAWINGS UNTIL A PERMIT FOR INDUSTRIAL WASTEWATER DISCHARGE HAS BEEN ISSUED BY THE SANITATION DISTRICTS FOR SAID CONNECTION.

BEFORE BREAKING INTO OR CONSTRUCTION ON A COUNTY SANITATION DISTRICT SEWER AND PRIOR TO FINAL ACCEPTANCE OF THE PROJECT, SANITATION DISTRICT INSPECTOR SHALL BE NOTIFIED BY PHONE 515-992-6605 SO THAT REQUIRED INSPECTION CAN BE MADE.

THE EXISTENCE AND LOCATION OF ANY UNDERGROUND PIPES OR STRUCTURES SHOWN ON THESE PLANS ARE OBTAINED BY A SEARCH OF THE AVAILABLE RECORDS. TO THE BEST OF MY KNOWLEDGE THERE ARE NO EXISTING UTILITIES EXCEPT AS SHOWN ON THESE PLANS. THE CONTRACTOR IS REQUIRED TO TAKE DUE PRECAUTIONARY MEASURES TO PROTECT THE UTILITIES SHOWN AND ANY OTHER LINES NOT OF RECORD OR NOT SHOWN ON THESE PLANS.

Robert T. Quinn
ROBERT T. QUINN R.C.E. 24988

GENERAL NOTES:

- ELEVATIONS ARE IN FEET ABOVE U.S.C. & G.S. SEA LEVEL DATUM OF 1929.
- NO REVISIONS SHALL BE MADE IN THESE PLANS WITHOUT THE APPROVAL OF THE DIRECTOR OF PUBLIC WORKS.
- NO REPRESENTATIVE OF THE DEPARTMENT OF PUBLIC WORKS WILL SURVEY OR LAY OUT ANY PORTION OF THE WORK.
- GRADES TO WHICH THIS IMPROVEMENT IS TO BE CONSTRUCTED ARE SHOWN ON PLANS AND PROFILES. GRADE POINTS FOR TOP OF CURBS, CENTERLINE OF STREETS, OR CENTERLINE OF ALLEYS ARE SHOWN BY CIRCLES ON PROFILES. AT ALL POINTS BETWEEN SAID DESIGNATED POINTS THE GRADE SHALL BE ESTABLISHED SO AS TO CONFORM TO A STRAIGHT LINE DRAWN BETWEEN SAID DESIGNATED POINTS.
- THE PRIVATE ENGINEER SHALL FURNISH THE DEPARTMENT OF PUBLIC WORKS WITH GRADE SHEETS AND STATIONING FOR ALL HOUSE LATERALS AND "Y" OR "T" BRANCHES AND SHALL PROVIDE STAKES FOR THEM AT THEIR PROPER LOCATIONS WITH STATIONING PLAINLY MARKED. ALL HOUSE LATERALS SHALL BE CONSTRUCTED IN A STRAIGHT ALIGNMENT AT RIGHT ANGLES FROM THE MAINLINE SEWER EXCEPT AS SHOWN ON THE PLANS. HOUSE LATERALS FROM CHIMNEYS SHALL NOT HAVE AN ANGLE OF LESS THAN 45° WITH THE MAINLINE SEWER. ANY CHANGE IN ALIGNMENT SHALL BE REQUESTED IN WRITING BY THE PRIVATE ENGINEER.
- THE PRIVATE ENGINEER SHALL FURNISH THE HOUSE LATERAL DEPTH AT THE PROPERTY LINE BELOW THE TOP OF CURB ELEVATION FOR EACH HOUSE LATERAL ON THE GRADE SHEET.
- BEFORE WORK CAN BE STARTED THE CONTRACTOR MUST OBTAIN A PERMIT TO EXCAVATE IN COUNTY STREETS FROM THE CONSTRUCTION DIVISION OF THE LOS ANGELES DEPARTMENT OF PUBLIC WORKS. PERMIT OFFICE NO. 15 AND PAY A FEE TO THE DIRECTOR OF PUBLIC WORKS, 5200 ALHAMBRA ST., LOS ANGELES, CALIFORNIA 90016 TO COVER THE COST OF CONSTRUCTION INSPECTION AND RECORD PLANS.
- IF WORK IS TO BE DONE IN A STATE HIGHWAY A PERMIT MUST BE OBTAINED FROM THE STATE OF CALIFORNIA, DIVISION OF HIGHWAYS, 120 SOUTH SPRING STREET, LOS ANGELES, CALIFORNIA.
- APPROVAL OF THIS PLAN BY THE COUNTY OF LOS ANGELES DOES NOT CONSTITUTE A REPRESENTATION AS TO THE ACCURACY OF THE LOCATION OF OR THE EXISTENCE OR NON-EXISTENCE OF ANY UNDERGROUND UTILITIES OR STRUCTURE WITHIN THE LIMITS OF THIS PROJECT. THIS NOTE APPLIES TO ALL PAGES.
- REFER TO SECTION 154 OF THE STANDARD SPECIFICATIONS REGARDING SAFETY ORDERS.
- PRIOR TO THE ISSUANCE OF THE REQUIRED SEWER CONSTRUCTION PERMIT THE CONTRACTOR SHALL OBTAIN AND FILE WITH THE DEPARTMENT OF PUBLIC WORKS COPIES OF A PERMIT TO EXCAVATE IN COUNTY STREETS FROM THE COUNTY ENGINEER, THE DEPARTMENT OF PUBLIC WORKS. A PERMIT FOR EXCAVATIONS AND TRENCHES FROM THE STATE OF CALIFORNIA, A DIVISION OF INDUSTRIAL SAFETY AND A CERTIFICATE OF WORKER COMPENSATION INSURANCE WITH THE DEPARTMENT OF PUBLIC WORKS, 1250 ALHAMBRA ST., LOS ANGELES, CALIFORNIA 90016. ROOMS NAMED AS THE CERTIFICATE HOLDER TO BE NOTIFIED 5 DAYS PRIOR TO CANCELLATION OF POLICY.

CONSTRUCTION NOTES:

- WORK SHALL BE CONSTRUCTED ACCORDING TO THE STANDARD SPECIFICATIONS FOR PUBLIC WORKS CONSTRUCTION 1985 EDITION WITH THE SUPPLEMENTS AND PARTS THEREOF. SPECIAL PROVISIONS FOR THE CONSTRUCTION OF SANITARY SEWERS ARE DATED MARCH 21, 1978.
- THE CONTRACTOR SHALL NOTIFY THE CONSTRUCTION DIVISION BY TELEPHONE 229-2291 AT LEAST TWENTY-FOUR HOURS BEFORE STARTING ANY WORK UNDER THIS CONTRACT.
- HOUSE LATERALS TO BE CONSTRUCTED WITH INVERTS AT PROPERTY LINE FEET BELOW CURB GRADE EXCEPT AS NOTED.
- WYE OR TEE BRANCHES MAY BE USED FOR CONNECTIONS TO MAINLINE SEWERS EXCEPT AS NOTED.
- ALL STRUCTURES SHALL BE EITHER BRICK MANHOLES PER S-3 OR PRECAST CONCRETE MANHOLES PER S-36 EXCEPT AS NOTED.
- PROVIDE STAKES ON THE PROPERTY LINE OR PROPERTY LINES PRODUCED AT RIGHT ANGLES TO THE SEWER LINE AT THE CENTERLINE OF EACH MANHOLE.
- MANHOLE TOPS IN UNIMPROVED AREAS TO BE SIX INCHES ABOVE FINISHED GRADE.
- WITHEED CLAY PIPE JOINTS SHALL BE TYPE "O" OR "R" PER STANDARD SPECIFICATIONS SECTION 308-2.
- IF A POWER POLE IS WITHIN THREE FEET OF THE SEWER, THE SEWER SHALL BE ENCASED PER S-23 CASE II, TWO FEET ON EACH SIDE FROM THE POINT OF INTERFERENCE.
- IF DURING THE COURSE OF CONSTRUCTION IT IS DETERMINED THAT THERE IS LESS THAN FOUR FEET OF COVER OVER THE TOP OF A MAINLINE OR HOUSE LATERAL "Y" OR "T" SEWER WHICH IS NOT INDICATED ON THESE PLANS, THE PIPE SHALL BE ENCASED PER S-23 CASE II UNLESS OTHERWISE APPROVED BY THE DIRECTOR OF PUBLIC WORKS.
- ALL JOINTS BETWEEN CAST IRON PIPE AND WITHEED CLAY PIPE SHALL BE MADE WITH A RUBBER SLEEVE JOINT, TYPE "C" OR "D", WITH BUSHING IF NECESSARY PER STANDARD SPECIFICATIONS SECTION 308-2.
- SEWERS TO BE TESTED FOR LEAKAGE PER SECTION 308-1.4 OF THE STANDARD SPECIFICATIONS AND SPECIAL PROVISIONS.
- RESECURE ALL TRENCHES WITHIN PAVED AREAS TO MEET LOS ANGELES COUNTY PUBLIC WORKS OR CALIFORNIA STATE HIGHWAY REQUIREMENTS IN ACCORDANCE WITH PERMITS.
- FULL COMPLIANCE WITH SECTION 158 OF THE STANDARD SPECIFICATIONS WILL BE REQUIRED FOR CURB AND IN-STREETS CERTIFICATION OF BACKFILL, COMPACTION AND SAND EQUIVALENTS BY A QUALIFIED REGISTERED TESTING LABORATORY. SHALL BE PROVIDED BY THE PERMITTEE PRIOR TO THE ISSUANCE OF A CERTIFICATE OF PARTIAL ACCEPTANCE.
- SPECIAL BACKFILL REQUIREMENT CONSTRUCTION IS BACKFILL TRENCH AND PIPE AND OTHER BARRIS 3045 TO ACHIEVE THE NATURAL OR FINISHED GRADES AND SLOPES SHOWN ON THE GRADING PLAN APPROVED BY THE LANDS DIVISION.
- IF ALL BACKFILL AND SAND EQUIVALENTS SHALL BE COMPLETED TO A MINIMUM OF 50% OF MAXIMUM DRY WEIGHT. THE METHOD OF TESTS 517 AS MODIFIED ACCEPTABLE CERTIFICATION OF SUCH COMPACTION SHALL BE SUBMITTED TO THE PLANS AND TO THE DIVISION OF PUBLIC WORKS.

PROFILE, ALIGNMENT AND GRADE OF
SANITARY SEWERS
TO BE CONSTRUCTED IN
TRACT N° 45268
PRIVATE CONTRACT NO. 10735
U-141A-4
3 SHEETS; 5 PAGES

SCALE: VERT. 1" = 5'
HORIZ. 1" = 40'

APRIL, 1987

PREPARED IN THE OFFICES OF
THE PEARSON GROUP
1555 N. REDONDO BEACH BLVD. GARDENA, CA. 90247

BY: Robert T. Quinn
REG. C.E. No. 24988

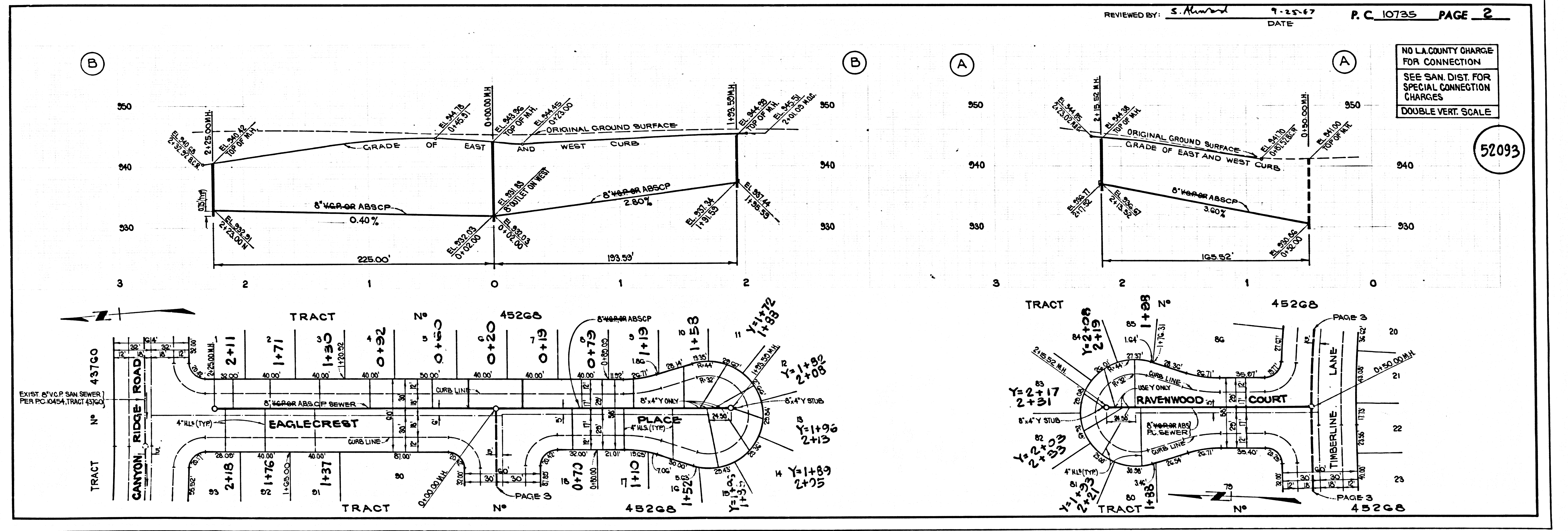
THE FOLLOWING LATEST REVISED STANDARD PLANS ON FILE IN THE OFFICE OF THE DEPARTMENT OF PUBLIC WORKS SHALL APPLY IN THE CONSTRUCTION OF THIS PROJECT:

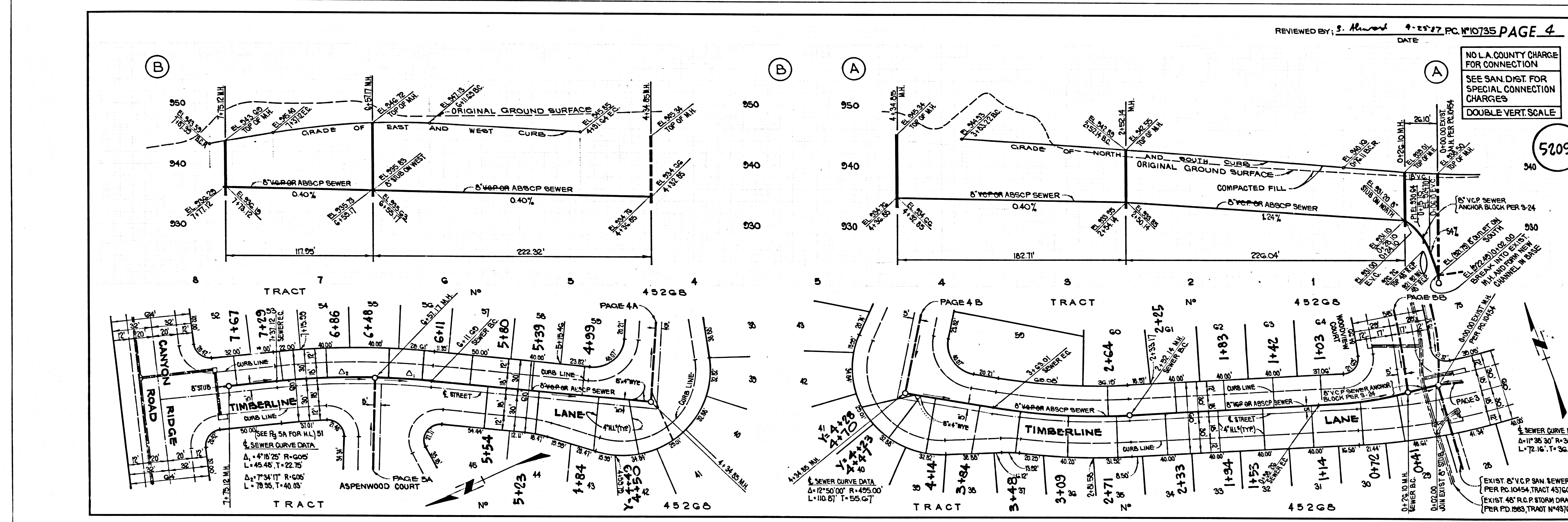
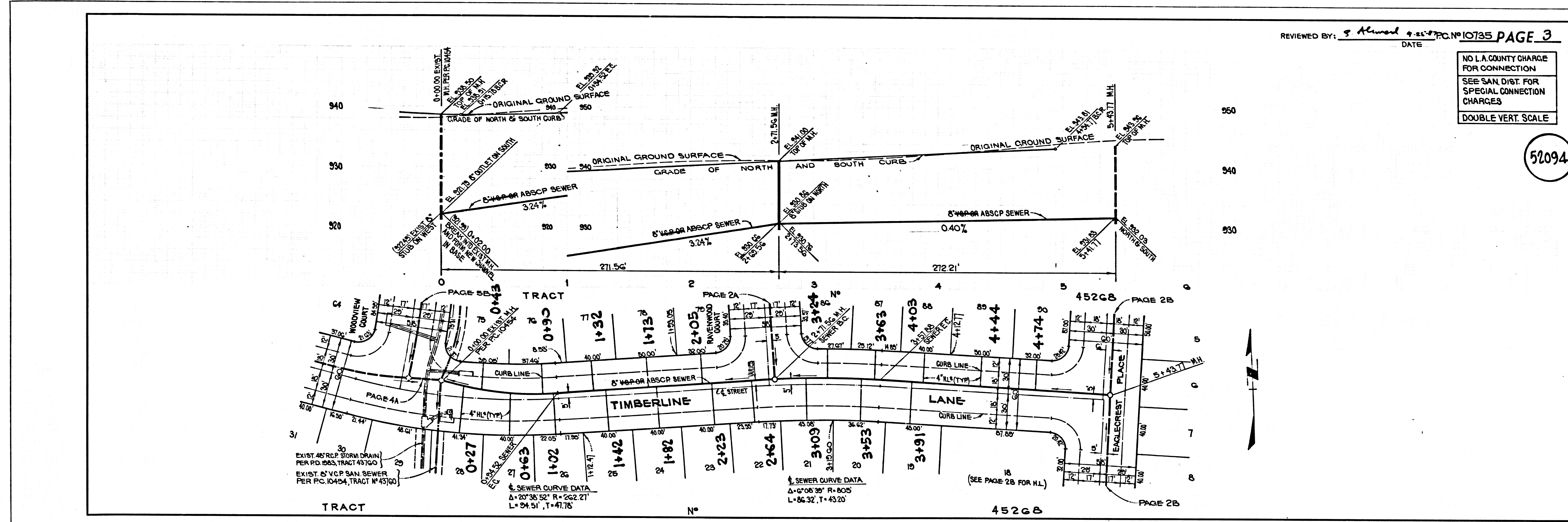
LEGEND	S-1
MINIMUM PUBLIC SAFETY REQUIREMENTS	S-2
BRICK MANHOLE	S-3
STANDARD MANHOLE STEP	S-17
BEDDING FOR SEWER PIPE	S-21
CHASING AND ENCASEMENT	S-22
WYE OR TEE SUPPORT	S-26
ALLOWABLE TRENCH WIDTHS	S-33
LOCKING MANHOLE FRAME AND COVER	S-36
NON-REINFORCED PRECAST CONCRETE MANHOLE	S-38
MANHOLE BULDER	S-39

COUNTY OF LOS ANGELES, CALIFORNIA
THOMAS A. TIDEMANSON, DIRECTOR OF PUBLIC WORKS
CHARLES W. CARRY, CHIEF ENGINEER

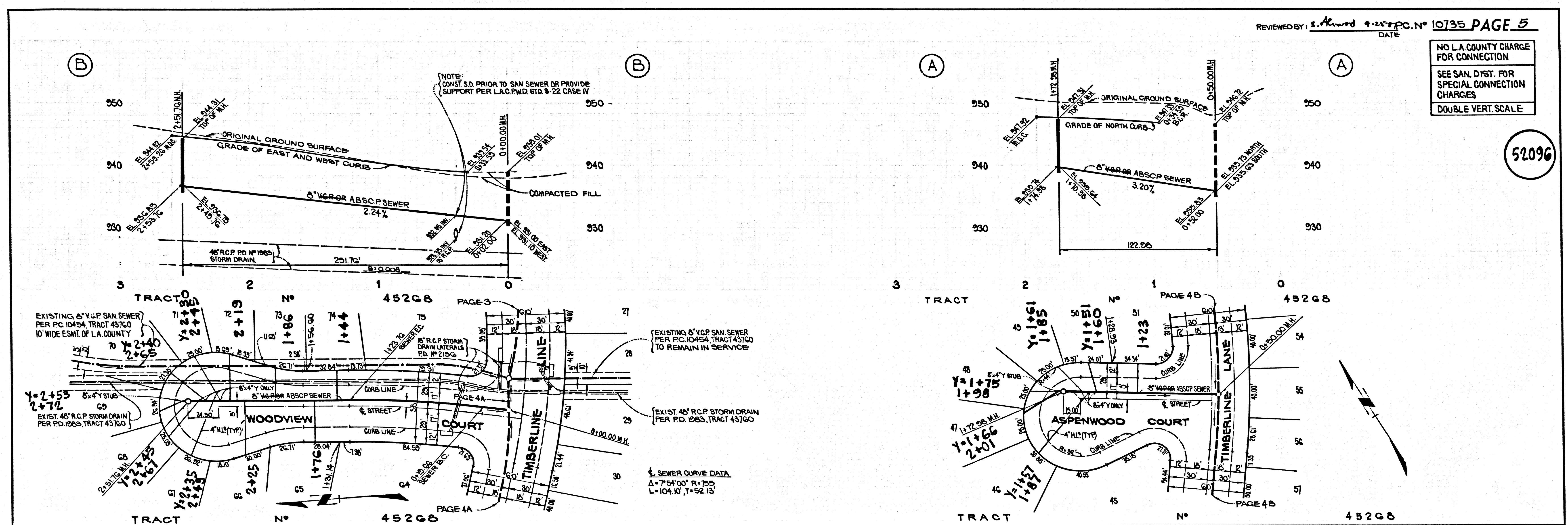
APPROVED: [Signature] 10/15/87 APPROVED: [Signature] 10/16/87
REVIEWED: [Signature] 9-25-87
R.L. A.S.L. CONSULTANTS, INC. REG. C.E. NO. 25718 (DATE)

LA PUENTE BLDG. DIST. 2





520109
 88526 1/4 TRACT



REVIEWED BY: S. Howard 9-25-77 PC. N° 10735 PAGE 5
DATE

NO L.A. COUNTY CHARGE FOR CONNECTION
SEE SAN. DIST. FOR SPECIAL CONNECTION CHARGES
DOUBLE VERT. SCALE

52096

25701 39
83524 11 TRACT

PAGE