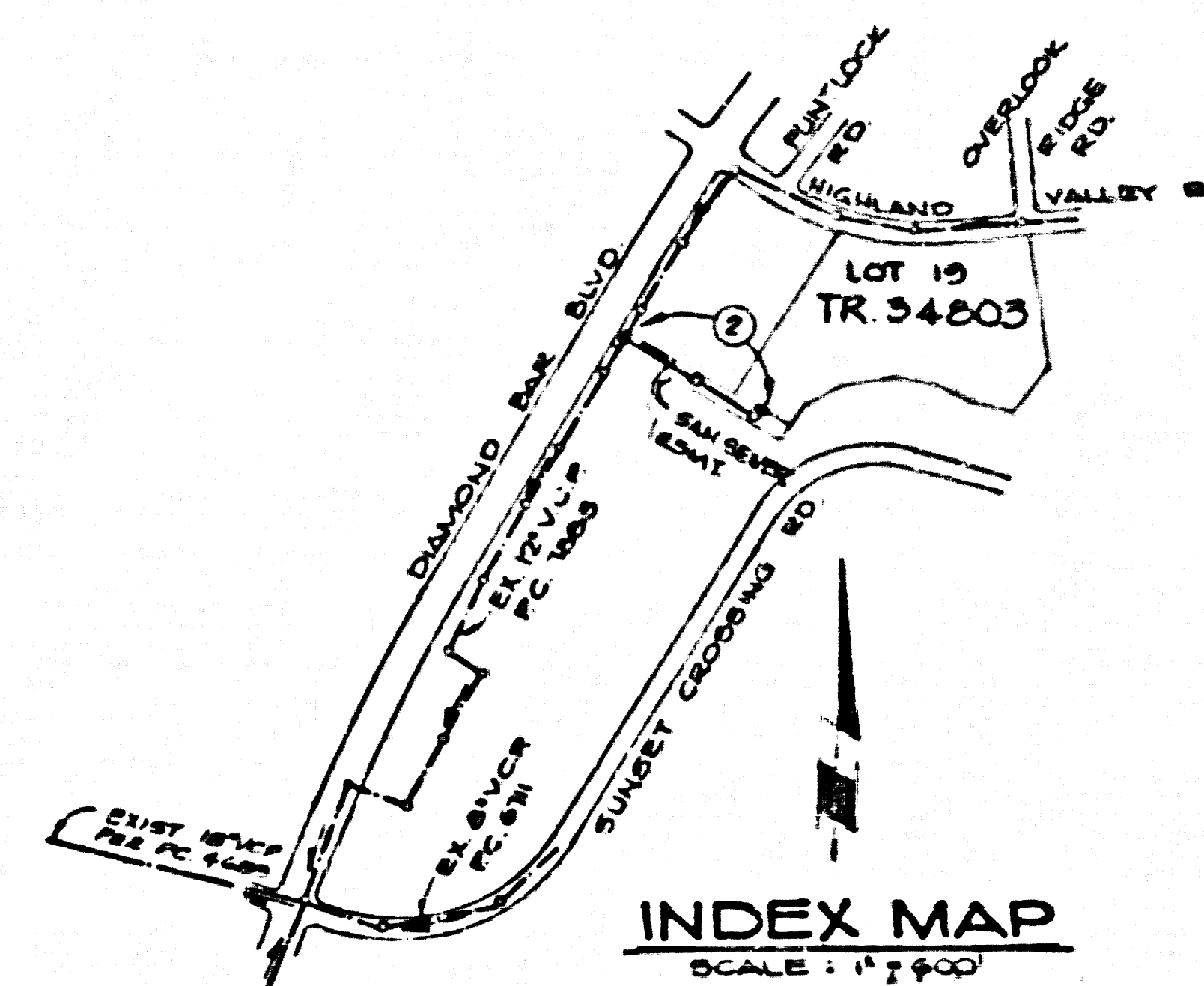


B.M. COR 321' E. V. 604.600
 P.C. 101.140 IN 24 FT E BCR
 25 FT S & 100 FT E E INT DIAMOND
 BAR BLVD & SUNSET CROSSING RD.
 OTTEREIN QUAD. 1915.

DOUBLE SCALE



INDEX MAP
 SCALE: 1" = 750'
 R/W. E. OF DIAMOND BAR BLVD.
 SO. OF HIGHLAND VALLEY RD.
 P.C. 10739

NO CONNECTION FOR THE DISPOSAL OF INDUSTRIAL WASTES SHALL BE MADE TO SEWERS SHOWN ON THESE DRAWINGS UNTIL A PERMIT FOR INDUSTRIAL WASTEWATER DISCHARGE HAS BEEN ISSUED BY THE SANITATION DISTRICTS FOR SAID CONNECTION.

BEFORE BREAKING INTO OR CONSTRUCTION ON A COUNTY SANITATION DISTRICT SEWER AND PRIOR TO FINAL ACCEPTANCE OF THE PROJECT, SANITATION DISTRICT INSPECTOR SHALL BE NOTIFIED BY PHONE (818) 962-8605 SO THAT REQUIRED INSPECTION CAN BE MADE.

GENERAL NOTES:

1. ELEVATIONS ARE IN FEET UNLESS OTHERWISE NOTED.
2. ALL SEWERS SHALL BE MADE TO FIELD PLANS WITHOUT THE APPROVAL OF THE SUPERVISOR OF PUBLIC WORKS.
3. NO REPRESENTATIVE OF THE CITY OF PALM SPRINGS SHALL BE PRESENT AT ANY POINT OF THE WORK.
4. GRADES TO WHICH THIS IMPROVEMENT IS TO BE CONSTRUCTED ARE SHOWN ON THESE PLANS AND PROFILES. GRADES POINTS FOR TOP OF CURB, CENTER LINE OF STREET, OR CENTER LINE OF ALLEY ARE SHOWN ON CURBLINE OR PROFILE AT ALL POINTS BETWEEN SAID SEPARATED POINTS.
5. THE PRIVATE SEWERING SHALL FOLLOW THE CITY OF PALM SPRINGS WITH GRADE TYPE AND STATIONING FOR ALL HOUSE LATERALS AND "T" OR "T" BRANCHES AND SHALL PROCEED FROM THEM AT THESE PROPOSED LOCATIONS WITH STATIONING PLANNED THEREON. ALL HOUSE LATERALS SHALL BE CONSTRUCTED AS A SLOPING ALIGNMENT AT RIGHT ANGLES FROM THE MAIN LINE SEWER RECEIPT AS SHOWN ON THIS PLAN. HOUSE LATERALS FROM CONCRETE SHALL NOT HAVE AN ANGLE OF LESS THAN 45° WITH THE MAIN LINE SEWER. ANY CHANGE IN ALIGNMENT SHALL BE INDICATED BY A NOTE ON THIS DRAWING.
6. THE PRIVATE SEWERING SHALL FOLLOW THE HOUSE LATERAL BEYOND THE PROPERTY LINE SHOW THE TOP OF CURB ELEVATION FOR EACH HOUSE LATERAL ON THE GRADE SHEET.
7. BEFORE WORK CAN BE STARTED THE CONTRACTOR MUST OBTAIN A PERMIT TO OCCUPY CITY STREETS FROM THE OFFICE OF THE SUPERVISOR OF PUBLIC WORKS, PALM SPRINGS, AND PAY A FEE TO THE SUPERVISOR OF PUBLIC WORKS. A PERMIT TO OCCUPY CITY STREETS SHALL BE OBTAINED FROM THE SUPERVISOR OF PUBLIC WORKS, PALM SPRINGS, AND PAY A FEE TO THE SUPERVISOR OF PUBLIC WORKS. A PERMIT TO OCCUPY CITY STREETS SHALL BE OBTAINED FROM THE SUPERVISOR OF PUBLIC WORKS, PALM SPRINGS, AND PAY A FEE TO THE SUPERVISOR OF PUBLIC WORKS.
8. APPROVAL OF THIS PLAN BY THE COUNTY OF SAN DIEGO DOES NOT CONSTITUTE A REPRESENTATION AS TO THE ACCURACY OF THE LOCATION OF OR THE EXISTENCE OR NON-EXISTENCE OF ANY UNDERGROUND UTILITY PIPE, OR STRUCTURE WITHIN THE LIMITS OF THIS PROJECT. THIS NOTE APPLIES TO ALL PAGES.
9. REFER TO SECTION 7.1.1 OF THE STANDARD SPECIFICATIONS, REGARDING "UTILITY LOCATIONS".
10. PRIOR TO THE BEGINNING OF THE WORK, THE CONTRACTOR SHALL NOTIFY THE SUPERVISOR OF PUBLIC WORKS, PALM SPRINGS, AND THE CITY OF PALM SPRINGS OF THE LOCATION OF ALL UTILITIES AND STRUCTURES TO BE EXCAVATED OR MOVED. THE CONTRACTOR SHALL BE RESPONSIBLE FOR THE LOCATION OF ALL UTILITIES AND STRUCTURES TO BE EXCAVATED OR MOVED. THE CONTRACTOR SHALL BE RESPONSIBLE FOR THE LOCATION OF ALL UTILITIES AND STRUCTURES TO BE EXCAVATED OR MOVED.

CONSTRUCTION NOTES:

1. HOUSE SHALL BE CONSTRUCTED ACCORDING TO THE STANDARD SPECIFICATIONS FOR PUBLIC WORKS CONSTRUCTION, 1988 EDITION, WITH 20% IMPROVEMENTS AND ALL OF PUBLIC WORKS SPECIAL PROVISIONS FOR THE CONSTRUCTION OF SANITARY SEWERS BY THE CITY OF PALM SPRINGS.
2. THE CONTRACTOR SHALL NOTIFY THE SUPERVISOR OF PUBLIC WORKS, PALM SPRINGS, AND THE CITY OF PALM SPRINGS OF THE LOCATION OF ALL UTILITIES AND STRUCTURES TO BE EXCAVATED OR MOVED.
3. HOUSE LATERALS TO BE CONSTRUCTED SHALL BE MADE AT RIGHT ANGLES TO THE MAIN LINE SEWER RECEIPT AS SHOWN.
4. TYPE OF THE BRANCHES MAY BE VARY FOR CONNECTION TO MAINLINE SEWER RECEIPT AS NOTED.
5. ALL SEWERS SHALL BE MADE TO FIELD PLANS WITHOUT THE APPROVAL OF THE SUPERVISOR OF PUBLIC WORKS, PALM SPRINGS, AND THE CITY OF PALM SPRINGS.
6. HOUSE SEWERS ON THE PROPERTY LINE OR PROPERTY LINE PRODUCED AT RIGHT ANGLES TO THE OTHER LINE AT THE CENTER LINE OF EACH BRANCHING.
7. BRANCHING SHALL BE MADE AT RIGHT ANGLES TO THE MAIN LINE SEWER RECEIPT AS SHOWN.
8. IN A POWER POLE IS WITHIN THREE FEET OF THE SEWER, THE SEWER SHALL BE ENCASED PER S.D. CASE 2, TWO FEET ON EACH SIDE FROM THE POINT OF INTERFERENCE.
9. AT BRANCHING THE COVER OF CONSTRUCTION IS TO BE MAINTAINED AT ALL TIMES. THE COVER SHALL BE ENCASED PER S.D. CASE 2 UNLESS OTHERWISE APPROVED BY THE SUPERVISOR OF PUBLIC WORKS.
10. ALL SEWERS BETWEEN CURB AND MAIN LINE SEWER SHALL BE MADE WITH A MINIMUM SLOPE OF FIVE PER CENT (5%) OR MORE UNLESS OTHERWISE APPROVED BY THE SUPERVISOR OF PUBLIC WORKS.
11. SEWERS TO BE TYPED FOR GRADE PER SECTION 7.1.1.1 OF THE STANDARD SPECIFICATIONS AND SPECIAL PROVISIONS.
12. REPLACEMENT ALL EXISTING SEWERS SHALL BE MADE TO FIELD PLANS WITHOUT THE APPROVAL OF THE SUPERVISOR OF PUBLIC WORKS, PALM SPRINGS, AND THE CITY OF PALM SPRINGS.
13. ALL COMPLIANCE WITH SECTION 7.1.1.1 OF THE STANDARD SPECIFICATIONS SHALL BE MAINTAINED THROUGHOUT THE CONSTRUCTION OF THE PROJECT.
14. SPECIAL PROVISIONS OF THE STANDARD SPECIFICATIONS, 1988 EDITION, SHALL APPLY TO ALL WORK UNDER THIS CONTRACT.

PROFILE, ALIGNMENT AND GRADE OF
 SANITARY SEWERS PAGE 1

TO BE CONSTRUCTED IN
 RIGHT OF WAY EAST OF DIAMOND BAR BLVD.
 SOUTH OF HIGHLAND VALLEY RD.

PRIVATE CONTRACT NO. 10739
 INDEX U-147

1 SHEET OF 2 PAGES
 SCALE: 1" = 10' HORIZONTAL
 1" = 5' VERTICAL
 JANUARY, 1988
 PREPARED IN THE OFFICES OF
 SUN-RAY ENGINEERING

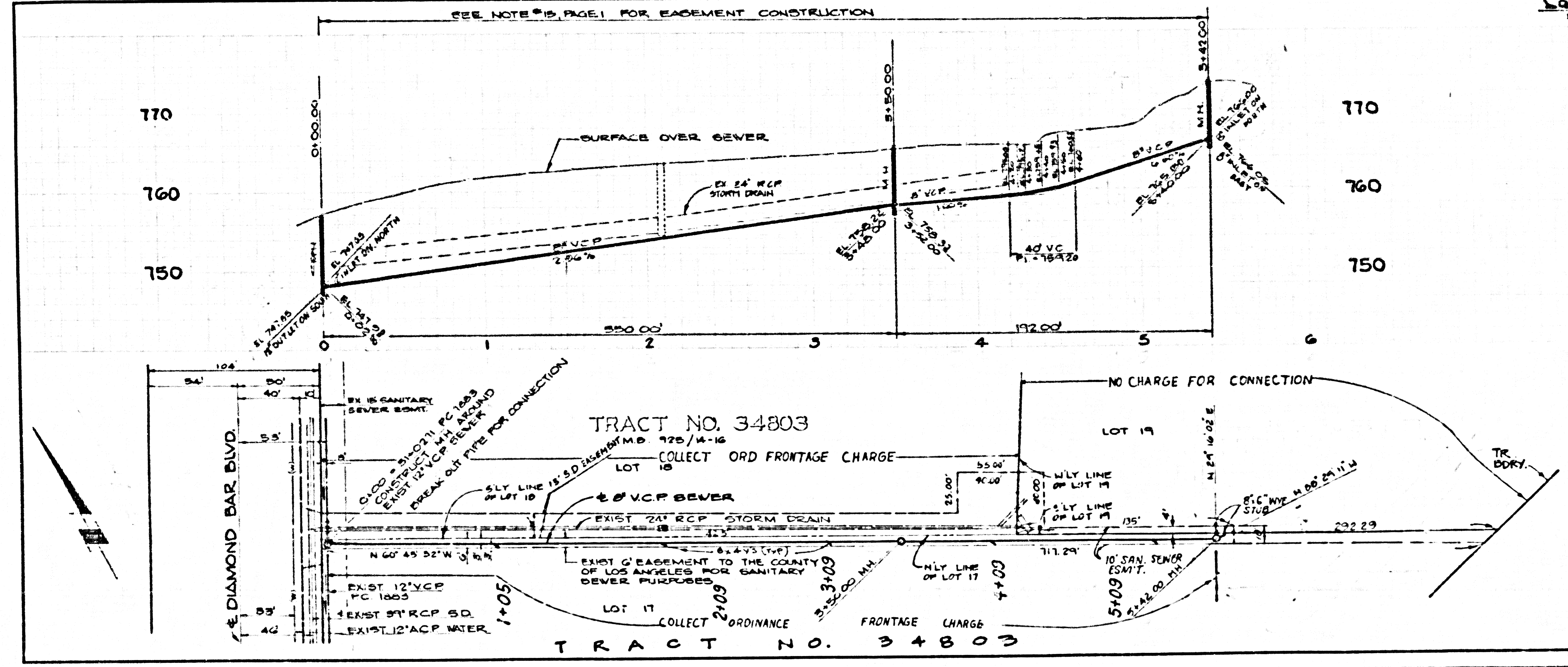
175 N. GARDEN STREET, PALMDALE, CALIFORNIA 93550
 BY: [Signature]
 REG. C. E. No. 17072

55123

THE FOLLOWING LATEST REVISED STANDARD PLANS ON FILE IN THE OFFICE OF THE SUPERVISOR OF PUBLIC WORKS, PALM SPRINGS, SHALL APPLY IN THE CONSTRUCTION OF THIS PROJECT:

STANDARD PUBLIC SAFETY REQUIREMENTS	8-1
STANDARD SEWERING	8-2
STANDARD SEWERING AND	8-3
STANDARD SEWERING AND	8-4
STANDARD SEWERING AND	8-5
STANDARD SEWERING AND	8-6
STANDARD SEWERING AND	8-7
STANDARD SEWERING AND	8-8
STANDARD SEWERING AND	8-9
STANDARD SEWERING AND	8-10
STANDARD SEWERING AND	8-11
STANDARD SEWERING AND	8-12
STANDARD SEWERING AND	8-13
STANDARD SEWERING AND	8-14
STANDARD SEWERING AND	8-15
STANDARD SEWERING AND	8-16
STANDARD SEWERING AND	8-17
STANDARD SEWERING AND	8-18
STANDARD SEWERING AND	8-19
STANDARD SEWERING AND	8-20
STANDARD SEWERING AND	8-21
STANDARD SEWERING AND	8-22
STANDARD SEWERING AND	8-23
STANDARD SEWERING AND	8-24
STANDARD SEWERING AND	8-25
STANDARD SEWERING AND	8-26
STANDARD SEWERING AND	8-27
STANDARD SEWERING AND	8-28
STANDARD SEWERING AND	8-29
STANDARD SEWERING AND	8-30
STANDARD SEWERING AND	8-31
STANDARD SEWERING AND	8-32
STANDARD SEWERING AND	8-33
STANDARD SEWERING AND	8-34
STANDARD SEWERING AND	8-35
STANDARD SEWERING AND	8-36
STANDARD SEWERING AND	8-37
STANDARD SEWERING AND	8-38
STANDARD SEWERING AND	8-39
STANDARD SEWERING AND	8-40
STANDARD SEWERING AND	8-41
STANDARD SEWERING AND	8-42
STANDARD SEWERING AND	8-43
STANDARD SEWERING AND	8-44
STANDARD SEWERING AND	8-45
STANDARD SEWERING AND	8-46
STANDARD SEWERING AND	8-47
STANDARD SEWERING AND	8-48
STANDARD SEWERING AND	8-49
STANDARD SEWERING AND	8-50
STANDARD SEWERING AND	8-51
STANDARD SEWERING AND	8-52
STANDARD SEWERING AND	8-53
STANDARD SEWERING AND	8-54
STANDARD SEWERING AND	8-55
STANDARD SEWERING AND	8-56
STANDARD SEWERING AND	8-57
STANDARD SEWERING AND	8-58
STANDARD SEWERING AND	8-59
STANDARD SEWERING AND	8-60
STANDARD SEWERING AND	8-61
STANDARD SEWERING AND	8-62
STANDARD SEWERING AND	8-63
STANDARD SEWERING AND	8-64
STANDARD SEWERING AND	8-65
STANDARD SEWERING AND	8-66
STANDARD SEWERING AND	8-67
STANDARD SEWERING AND	8-68
STANDARD SEWERING AND	8-69
STANDARD SEWERING AND	8-70
STANDARD SEWERING AND	8-71
STANDARD SEWERING AND	8-72
STANDARD SEWERING AND	8-73
STANDARD SEWERING AND	8-74
STANDARD SEWERING AND	8-75
STANDARD SEWERING AND	8-76
STANDARD SEWERING AND	8-77
STANDARD SEWERING AND	8-78
STANDARD SEWERING AND	8-79
STANDARD SEWERING AND	8-80
STANDARD SEWERING AND	8-81
STANDARD SEWERING AND	8-82
STANDARD SEWERING AND	8-83
STANDARD SEWERING AND	8-84
STANDARD SEWERING AND	8-85
STANDARD SEWERING AND	8-86
STANDARD SEWERING AND	8-87
STANDARD SEWERING AND	8-88
STANDARD SEWERING AND	8-89
STANDARD SEWERING AND	8-90
STANDARD SEWERING AND	8-91
STANDARD SEWERING AND	8-92
STANDARD SEWERING AND	8-93
STANDARD SEWERING AND	8-94
STANDARD SEWERING AND	8-95
STANDARD SEWERING AND	8-96
STANDARD SEWERING AND	8-97
STANDARD SEWERING AND	8-98
STANDARD SEWERING AND	8-99
STANDARD SEWERING AND	8-100

COUNTY OF LOS ANGELES, CALIFORNIA
 THOMAS A. TIDEMANSON, DIRECTOR OF PUBLIC WORKS
 CHARLES W. CARRY, CIVIL ENGINEER
 APPROVED: [Signature] 10-3-88
 CHECKED: [Signature] 10-3-88
 DATE: 10-3-88
 SAN DIST NO. 21
 SAN DIMAS, SDG DIST 10



SEE NOTE #19, PAGE 1 FOR EASEMENT CONSTRUCTION
 DATE: 10-3-88
 P.C. 10739 PAGE 2

DOUBLE SCALE
 SEE CO. SAN. DIST. FOR SPECIAL CONNECTION CHARGES
 NO L.A. CO. CHARGE FOR CONNECTIONS

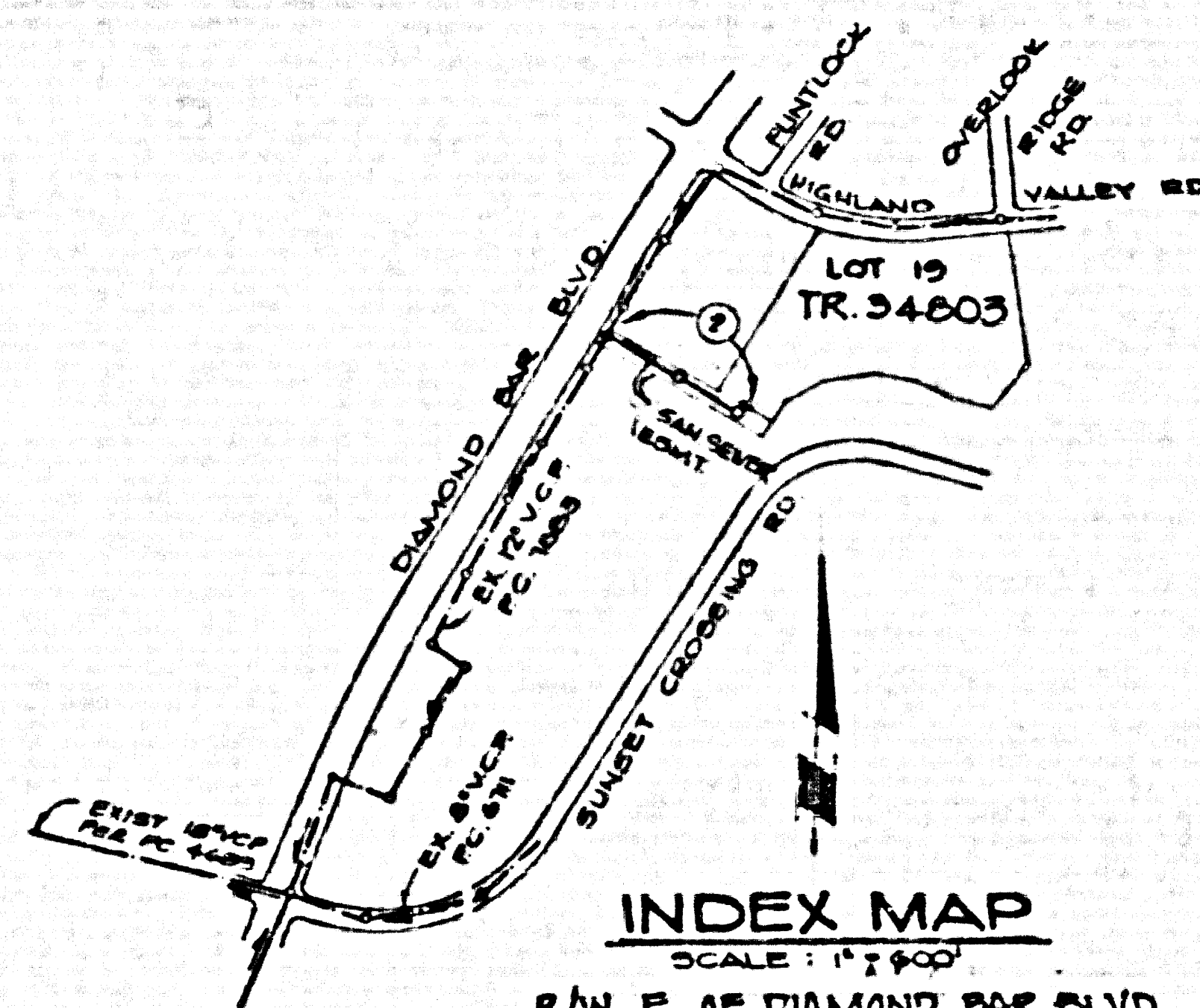
BC 10139

EOBAG.9T

TO: 004 OF SEWER

R.M. CO. 5015 ELEV. 604.850
 R.D.M. TAG IN CD. 54 FT. E. BCR
 25 FT. S. & 100 FT. E. INT. DIAMOND
 BAR BLVD. & SUNSET CROSSING RD.
 OTHERS IN QUAD. 1975.

DOUBLE SCALE



INDEX MAP
 SCALE: 1" = 100'
 R.W. E. OF DIAMOND BAR BLVD.
 S.W. OF HIGHLAND VALLEY RD.
 P.C. 10739

NUMBER IN CIRCLE
 INDICATES PAGE NUMBER

NO CONNECTION FOR THE DISPOSAL OF INDUSTRIAL WASTES SHALL BE MADE TO SEWERS SHOWN ON THESE DRAWINGS UNTIL A PERMIT FOR INDUSTRIAL WASTEWATER DISCHARGE HAS BEEN ISSUED BY THE SANITATION DISTRICTS FOR SAID CONNECTION.

BEFORE BREAKING INTO OR CONSTRUCTION ON A COUNTY SANITATION DISTRICT SEWER AND PRIOR TO FINAL ACCEPTANCE OF THE PROJECT, SANITATION DISTRICT INSPECTOR SHALL BE NOTIFIED BY PHONE (818) 962-8605 SO THAT REQUIRED INSPECTION CAN BE MADE.

- GENERAL NOTES:**
1. ELEVATIONS ARE IN FEET ABOVE M.S.L. & S.E. SEA LEVEL DATUM OF 1929.
 2. ALL SEWERAGE SHALL BE MADE IN 12" OR 15" RINGS WITHOUT THE APPROVAL OF THE ENGINEER OR PUBLIC WORKS DEPARTMENT.
 3. NO CONSTRUCTION OF THE SEWER OR HOUSE CONNECTION SHALL BE MADE ON ANY PORTION OF THE WORK.
 4. MANHOLE TO WHICH THE IMPROVEMENT IS TO BE CONSTRUCTED ARE SHOWN ON PLANS AND PROFILES. SPARE HOLES FOR TOP OF CURB CENTER LINE OF STREET, OR CENTER LINE OF LANE AND NUMBER OF CIRCLES ON PROFILES AT ALL POINTS BETWEEN 50' TO 100' POINTS THE CURB SHALL BE ESTABLISHED SO AS TO CONFORM TO A STANDARD AND BEHAVE SMOOTHLY AND UNIFORMITY.
 5. THE PRIVATE OWNER SHALL FURNISH THE SET OF PLANS WITH SEWER SERVICE AND BRANCHINGS FOR ALL HOUSE LATERALS AND "T" OR "Y" BRANCHES AND SHALL PROVIDE SEWER FOR HOUSES AT SEWER SERVICE LOCATIONS WITH SEWER SERVICE PLANNED THEREON. ALL HOUSE LATERALS SHALL BE CONSTRUCTED BY A BRANCH ALIGNED AT RIGHT ANGLES FROM THE MAIN LINE SEWER EXCEPT AS SHOWN ON THE PLANS. HOUSE LATERALS FROM EXISTING HOUSES SHALL BE MADE AT AN ANGLE OF 45 DEGREES TO THE MAIN LINE SEWER. ANY CHANGE IN ALIGNMENT SHALL BE INDICATED BY NOTES IN THE FORWARD SPECIFICATIONS.
 6. THE PRIVATE OWNER SHALL FURNISH THE HOUSE LATERAL SEWER & THE PROPERTY LINE BENEATH THE TOP OF CURB SEPARATION FOR EACH HOUSE LATERAL ON THE GRAB BENCH.
 7. BEFORE WORK CAN BE STARTED, THE CONTRACTOR MUST OBTAIN A PERMIT TO OCCUPY IN COUNTY SEWERS FROM THE COUNTY DEPARTMENT OF PUBLIC WORKS, FORM NO. 50. AND PAY A FEE TO THE OFFICE OF PUBLIC WORKS. WORK PERMITS ARE AVAILABLE AT 1150 N. GARDEN ST. LOS ANGELES, CALIFORNIA. THE FEE TO COVER THE COST OF CONSTRUCTION INSPECTION AND RECORD PLANS.
 8. A WORK IS TO BE DONE IN A STREET HIGHWAY, A PERMIT MUST BE OBTAINED FROM THE STATE OF CALIFORNIA, DIVISION OF HIGHWAY, 120 SOUTH BRIDGE STREET, SAN ANTONIO, CALIFORNIA.
 9. APPROVAL OF THE PLAN BY THE COUNTY OF LOS ANGELES DOES NOT CONSTITUTE A REPRESENTATION AS TO THE ACCURACY OF THE LOCATION OF OR THE EXISTENCE OR NON-EXISTENCE OF ANY UNDERGROUND UTILITY PIPE, OR STRUCTURE WITHIN THE LIMITS OF THIS PROJECT. THIS NOTE APPLIES TO ALL PAGES.
 10. REFER TO SECTION 1-1 HEAD OF THE STANDARD SPECIFICATIONS, REGARDING BATTERY CABLES.
 11. THERE IS THE UNDERSIDE OF THE REINFORCED CONCRETE SEWERAGE PIPE THE CONTRACTOR SHALL BE RESPONSIBLE TO THE S.W. THE DEPT. OF PUBLIC WORKS OF THE COUNTY OF LOS ANGELES TO OBTAIN A PERMIT TO OCCUPY IN COUNTY SEWERS FROM THE COUNTY DEPARTMENT OF PUBLIC WORKS, FORM NO. 50. AND PAY A FEE TO THE OFFICE OF PUBLIC WORKS. WORK PERMITS ARE AVAILABLE AT 1150 N. GARDEN ST. LOS ANGELES, CALIFORNIA. THE FEE TO COVER THE COST OF CONSTRUCTION INSPECTION AND RECORD PLANS.

- CONSTRUCTION NOTES:**
1. WORK SHALL BE CONSTRUCTED ACCORDING TO THE STANDARD SPECIFICATIONS FOR PUBLIC WORKS CONSTRUCTION 1980 EDITION WITH 1978 SUPPLEMENT AND ANY OTHER SPECIAL PROVISIONS FOR THE CONSTRUCTION OF SANITARY SEWERS DATED 8/21/78. ALL WORK SHALL BE CONSTRUCTED UNDER THE SUPERVISION OF THE COUNTY OF LOS ANGELES.
 2. THE CONTRACTOR SHALL NOTIFY THE CONSTRUCTION DIVISION OF LOS ANGELES, (818) 458-3123 AT LEAST TWENTY FOUR HOURS BEFORE STARTING ANY WORK UNDER THIS CONTRACT.
 3. HOUSE LATERALS TO BE CONSTRUCTED WITH SEWERS AT RIGHT ANGLES & SET BELOW CURB GRAB BENCH EXCEPT AS NOTED.
 4. TYPE OF THE BRANCHES MAY BE USED FOR CONNECTIONS TO SEWERAGE SEWER EXCEPT AS NOTED.
 5. ALL STRUCTURES SHALL BE BUILT BRICK MANHOLE FOR 2.0 OR PRECAST CONCRETE MANHOLE FOR 2.0 EXCEPT AS NOTED.
 6. PROVIDE STAIRS ON THE PROPERTY LINE OR NEAREST WALK PROVIDED AT RIGHT ANGLES TO THE SEWER LINE AS THE CENTER LINE OF EACH MANHOLE.
 7. MANHOLE WORK IS UNIMPROVED EXCEPT AS NOTED TO BE 24" ABOVE FINISHED GRADE.
 8. VITRIFIED CLAY PIPE JOINTS SHALL BE TYPE "T", "C", OR "D" PER STANDARD SPECIFICATIONS SECTION 900-2.
 9. IF A HOUSE POLE IS WITHIN THREE FEET OF THE SEWER, THE SEWER SHALL BE SHIELDED, PER 2.0, CASE 2, TWO FEET ON EACH SIDE FROM THE POINT OF INTERFERENCE.
 10. IF DURING THE COURSE OF CONSTRUCTION IT IS DETERMINED THAT THERE IS MORE THAN FOUR FEET OF COVER OVER THE TOP OF A MAIN LINE OR HOUSE LATERAL V.C.P. SEWER WHICH IS NOT INDICATED ON THE PLANS, THE PIPE SHALL BE SHIELDED PER 2.0, CASE 2, UNLESS OTHERWISE APPROVED BY THE ENGINEER, OR PUBLIC WORKS.
 11. ALL JOINTS BETWEEN CAST IRON PIPE AND VITRIFIED CLAY PIPE SHALL BE MADE WITH A RUBBER SERVICE JOINT, TYPE "C" OR "T", FORTH WITHIN THE NECESSARY FOR STANDARD SPECIFICATIONS, SECTION 900-2.
 12. SEWERS TO BE BUILT FOR LEAKAGE PER SECTION 900-2 OF THE STANDARD SPECIFICATIONS AND SPECIAL PROVISIONS.
 13. REINFORCE ALL STRUCTURES WITHIN PAVED AREAS TO MEET L.A. COUNTY ROAD DEPT. OF CALIFORNIA STATE HIGHWAY REQUIREMENTS IN ACCORDANCE WITH PERMITS.
 14. FULL COMPLIANCE WITH SECTION 900-2 OF THE STANDARD SPECIFICATIONS SHALL BE OBTAINED FOR EACH PIPE BY STREET CERTIFICATION OF EACH CONNECTION AND SAME EQUIVALENTS BY A QUALIFIED, LICENSED TESTING LABORATORY SHALL BE PROVIDED BY THE CONTRACTOR FOR THE REMAINDER OF A CERTIFICATE OF PARTIAL ACCEPTANCE.
 15. ORIGINAL RECORDS OF CONSTRUCTION OR REVISIONS OF RECORDS SHALL BE MAINTAINED BY THE CONTRACTOR UNTIL THE PROJECT IS COMPLETE. ALL RECORDS SHALL BE MAINTAINED IN THE COUNTY DEPARTMENT OF PUBLIC WORKS, FORM NO. 50. AND PAY A FEE TO THE OFFICE OF PUBLIC WORKS. WORK PERMITS ARE AVAILABLE AT 1150 N. GARDEN ST. LOS ANGELES, CALIFORNIA. THE FEE TO COVER THE COST OF CONSTRUCTION INSPECTION AND RECORD PLANS.

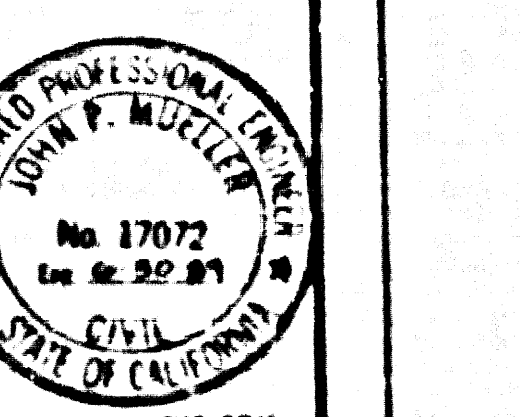
PROFILE, ALIGNMENT AND GRADE OF
SANITARY SEWERS PAGE 1

TO BE CONSTRUCTED IN
 RIGHT OF WAY EAST OF DIAMOND BAR BLVD.
 SOUTH OF HIGHLAND VALLEY RD.

PRIVATE CONTRACT NO. 10739
 INDEX U-147

1 SHEET OF 2 PAGES
 SCALE: VERT. 1" = 6'
 HORIZ. 1" = 20'
 JANUARY, 1988
 PREPARED IN THE OFFICES OF
SUN-RAY ENGINEERING
 125 N. GARDEN ST., LOS ANGELES, CALIFORNIA 90012
 BY: [Signature]
 REG. C.E. No. 17072

53123

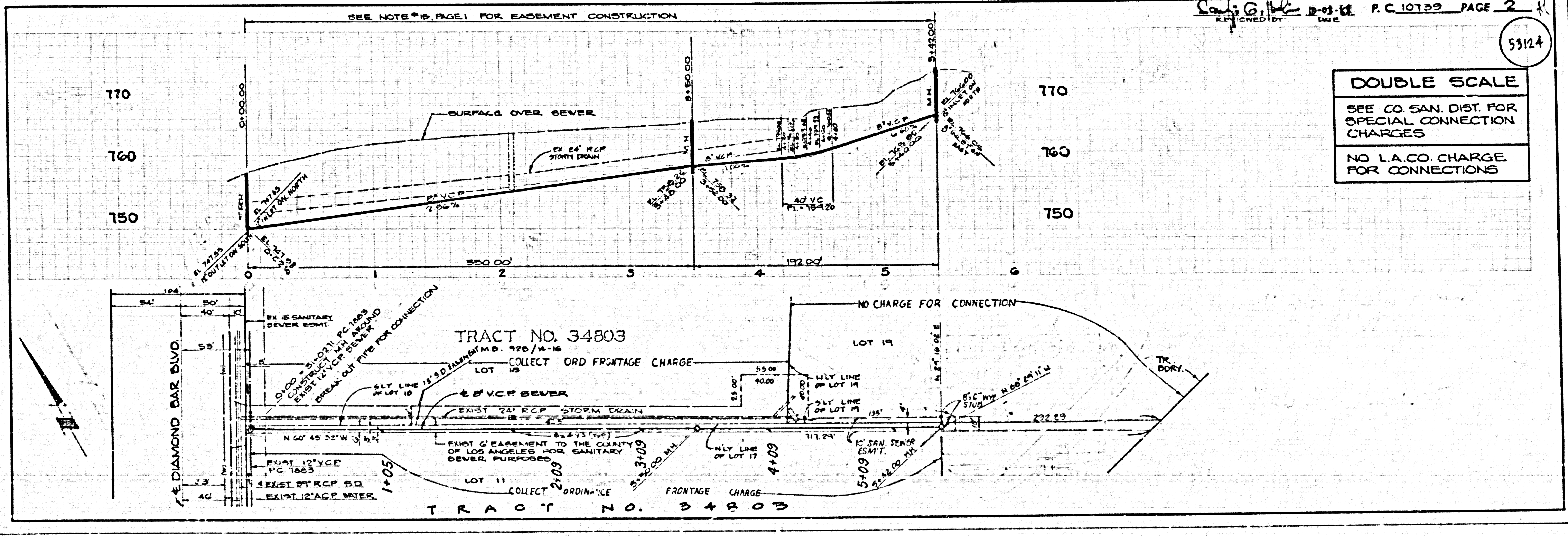


THE FOLLOWING LATEST REVISED STANDARD PLANS ON FILE IN THE OFFICE OF THE COUNTY ENGINEER SHALL APPLY IN THE CONSTRUCTION OF THE PROJECT.

SEWER	51
SEWERAGE	52
SEWER MANHOLE	53
SEWERAGE MANHOLE DEP.	54
SEWERAGE FOR SPICE PIPE	55
CHANGING AND REPAIRING	56
PIPE ON THE SUPPORT	57
ALLOWABLE TRENCH WIDTH	58
RECORDING STANDARD PLANS AND COPIES	59
NON-SHIELDING PRECAST CONCRETE MANHOLE	60

COUNTY OF LOS ANGELES, CALIFORNIA
 THOMAS A. THOMASMANSON DIRECTOR OF PUBLIC WORKS
 APPROVED [Signature] 12-2-88
 CHECKED [Signature] 12-3-88
 REG. C.E. No. 10116
 SAN DIMAS - BLDG. DIST. 10

CHARLES W. CARRY CHIEF ENGINEER
 APPROVED [Signature] 12-1-88
 CO. SAN. DIST. NO. 21



SEE NOTE #15, PAGE 1 FOR EASEMENT CONSTRUCTION
 RECEIVED BY [Signature] 12-03-88
 P.C. 10739 PAGE 2
 53124

DOUBLE SCALE
 SEE CO. SAN. DIST. FOR SPECIAL CONNECTION CHARGES
 NO L.A. CO. CHARGE FOR CONNECTIONS