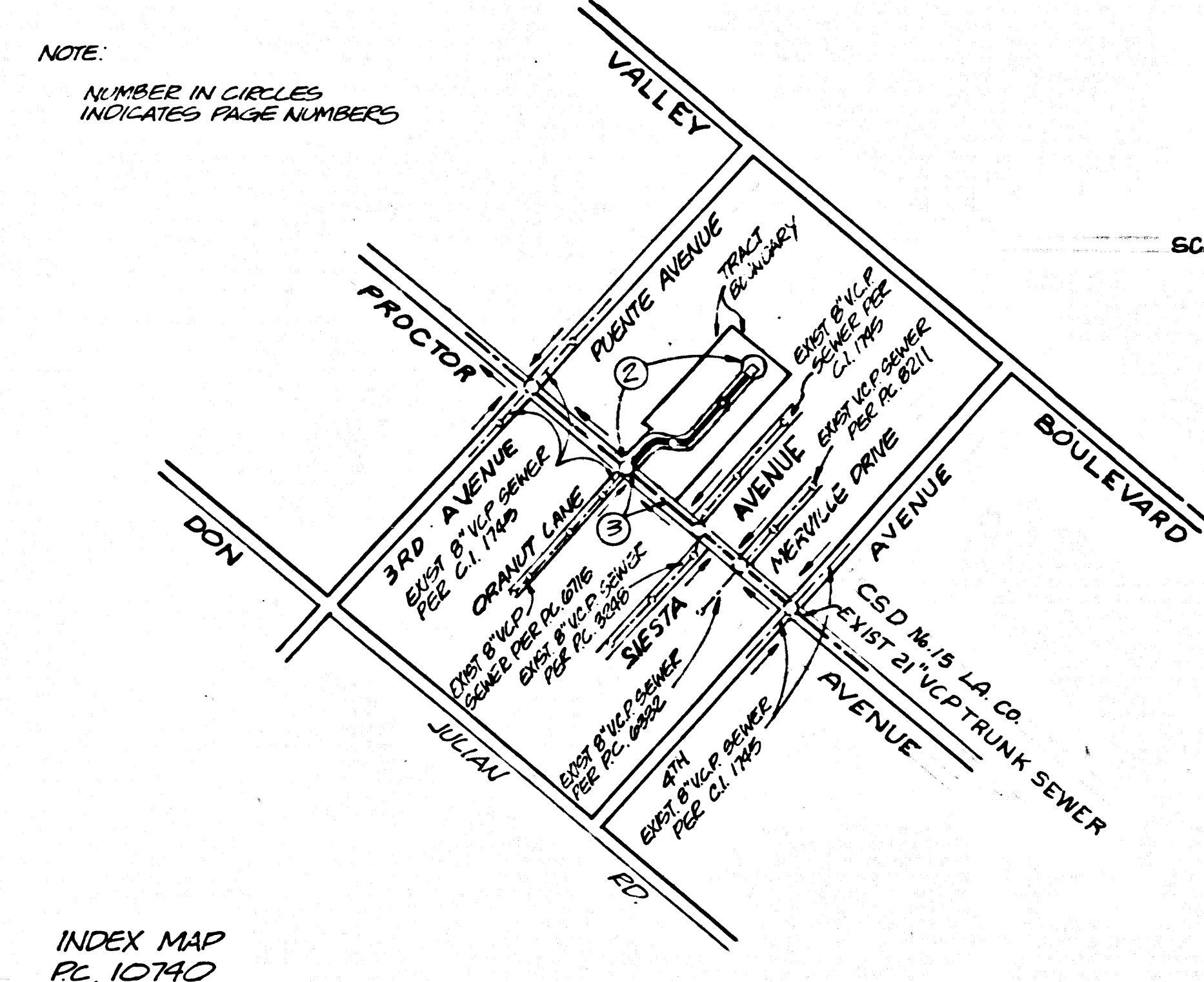


B.M. P.C. 4547 ELEV. = 295.562
 RDBM TAG 1 FT. W/O B.C.R. 42 FT. SO. CL. VALLEY
 BLVD. 8.63 FT. W/O CL. 3RD AVE.
 PUENTE QUAD. 19 EQ.

DOUBLE SCALE

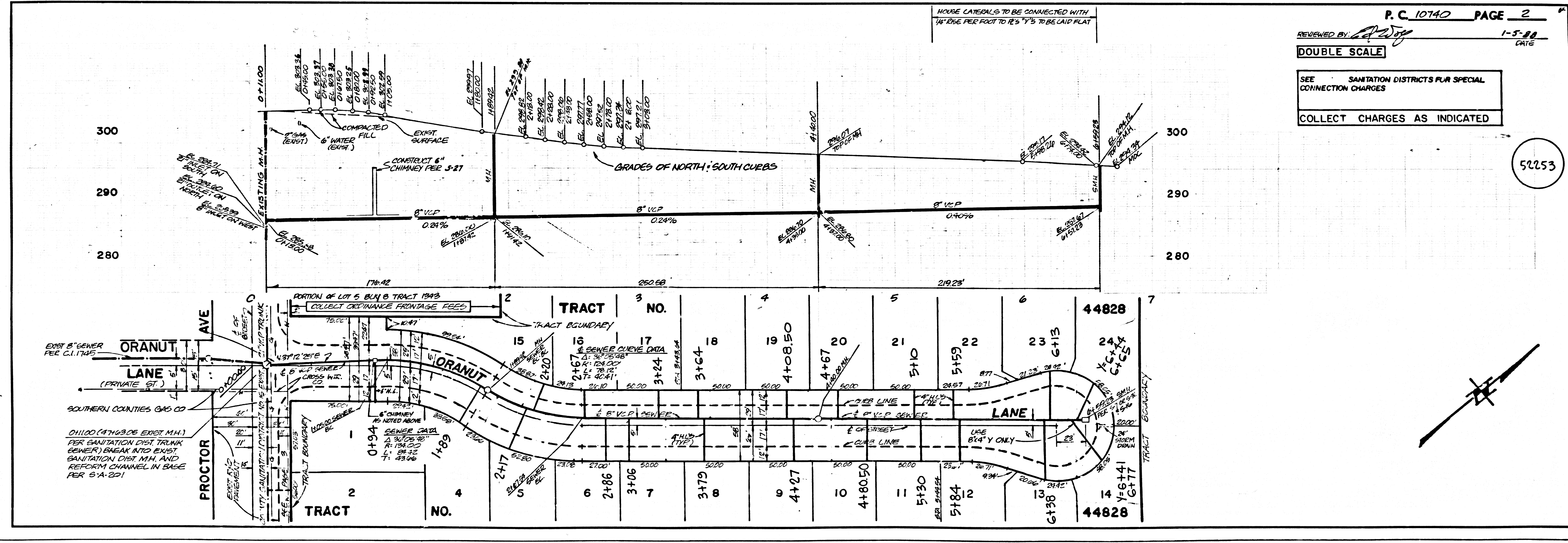
- GENERAL NOTES:**
- ELEVATIONS ARE IN FEET ABOVE U.S. & G.S. SEA LEVEL DATUM OF 1929.
 - NO REVISIONS SHALL BE MADE IN THESE PLANS WITHOUT THE APPROVAL OF THE DIRECTOR OF PUBLIC WORKS.
 - NO REPRESENTATIVE OF THE DEPARTMENT OF PUBLIC WORKS WILL SURVEY OR LAY OUT ANY PORTION OF THE WORK.
 - GRADES TO WHICH THIS IMPROVEMENT IS TO BE CONSTRUCTED ARE SHOWN ON PLANS AND PROFILES. GRADE POINTS FOR TOP OF CURBS, CENTER LINE OF STREETS OR CENTER LINE OF ALLY CLANS SHOWN BY CIRCLES ON PROFILES. STALL POINTS AT THEIR RESPECTIVE DESIGNATED POINTS. THE GRADE SHALL BE ESTABLISHED SO AS TO CONFORM TO A STRAIGHT LINE DRAWN BETWEEN SAID DESIGNATED POINTS.
 - THE PRIVATE ENGINEER SHALL FURNISH THE DEPARTMENT OF PUBLIC WORKS WITH GRADE SHEETS AND STATIONING FOR ALL HOUSE LATERALS AND "Y" OR "T" BRANCHES AND SHALL PROVIDE STAKES FOR THEM AT THEIR PROPER LOCATIONS WITH STATIONING PLAINLY MARKED. ALL HOUSE LATERALS SHALL BE CONSTRUCTED IN A STRAIGHT ALIGNMENT AT RIGHT ANGLES FROM THE MAIN LINE SEWER EXCEPT AS SHOWN ON THE PLANS. HOUSE LATERALS FROM CHIMNEYS SHALL NOT HAVE AN ANGLE OF LESS THAN 45° WITH THE MAIN LINE SEWER. ANY CHANGE IN ALIGNMENT SHALL BE REQUESTED IN WRITING BY THE PRIVATE ENGINEER.
 - THE PRIVATE ENGINEER SHALL FURNISH THE HOUSE LATERAL DEPTH AT THE PROPERTY LINE BELOW THE TOP OF CURB ELEVATION FOR EACH HOUSE LATERAL ON THE GRADE SHEET.
 - BEFORE WORK CAN BE STARTED, THE CONTRACTOR MUST OBTAIN A PERMIT TO EXCAVATE IN COUNTY STREETS FROM THE CONSTRUCTION DIVISION OF THE COUNTY OF LOS ANGELES DEPARTMENT OF PUBLIC WORKS, DISTRICT OFFICE NO. 10740, AND PAY A FEE TO THE DIRECTOR OF PUBLIC WORKS, ROOM 8, FIDELITY AND SECURITY BLDG., ALHAMBRA, CALIF. 91803, TO COVER THE COST OF CONSTRUCTION INSPECTION AND RECORD PLANS.
 - IF WORK IS TO BE DONE IN A STATE HIGHWAY, A PERMIT MUST BE OBTAINED FROM THE STATE OF CALIFORNIA, DIVISION OF HIGHWAYS, 180 SOUTH SPRING STREET, LOS ANGELES, CALIFORNIA.
 - APPROVAL OF THIS PLAN BY THE COUNTY OF LOS ANGELES DOES NOT CONSTITUTE A REPRESENTATION AS TO THE ACCURACY OF THE LOCATION OF OR THE EXISTENCE OR NON-EXISTENCE OF ANY UNDERGROUND UTILITY PIPE, OR STRUCTURE WITHIN THE LIMITS OF THIS PROJECT. THIS NOTE APPLIES TO ALL PHASES.
 - REFER TO SECTION 704.1 OF THE STANDARD SPECIFICATIONS REGARDING SAFETY ORDERS.
 - PRIOR TO THE ISSUANCE OF THE REQUIRED SPECIAL CONSTRUCTION PERMIT, THE CONTRACTOR SHALL OBTAIN AND FILE WITH THE DEPARTMENT OF PUBLIC WORKS COPIES OF A PERMIT TO EXCAVATE IN COUNTY STREETS FROM THE CONSTRUCTION DIVISION AT THE DEPARTMENT OF PUBLIC WORKS, COUNTY OF LOS ANGELES, AND PROVIDE A COPY OF SAID PERMIT TO THE DIVISION OF INDUSTRIAL SAFETY AND A CERTIFICATE OF ADEQUATE COMPENSATION INSURANCE WITHIN THE DEPARTMENT OF PUBLIC WORKS, 900 S. FIDELITY AND SECURITY BLDG., ALHAMBRA, CALIFORNIA 91803, WITH RECORD NUMBER AS THE CERTIFICATE NUMBER TO BE RETURNED TO THE DIVISION OF POLICE.

PROFILE ALIGNMENT AND GRADE OF
SANITARY SEWERS
 TO BE CONSTRUCTED IN THE COUNTY OF L.A.
 TRACT NO. 44828
 PRIVATE CONTRACT NO. 10740
 INDEX U-48-H3
 2 SHEETS; 3 PAGES
 SCALE: HORIZ. 1" = 40'
 VERT. 1" = 4'
 JULY, 1987
 PREPARED IN THE OFFICES OF VALLEY CONSULTANTS, INC.
 139 EAST ALTON AVE.
 SANTA ANA, CA 92707
 (714) 754-1510
 EXP. 9/31/91
 BY: James Kavanagh
 REG. C.E. NO. 29329
 THE FOLLOWING LATEST REVISED STANDARD PLANS ON FILE IN THE OFFICE OF THE DEPARTMENT OF PUBLIC WORKS SHALL APPLY IN THE CONSTRUCTION OF THIS PROJECT:
 LEGEND:
 RECTANGULAR MANHOLE FRAMES & COVERS S-1
 PRECAST CONCRETE SHALLOW MANHOLE S-2
 RECTANGULAR SHALLOW MANHOLE S-7
 MINIMUM PUBLIC SAFETY REQUIREMENTS S-9
 BRICK SEWER MANHOLE S-10
 STANDARD MANHOLE STEP S-17
 REDDING FOR SEWER PIPE S-21
 CHASING AND ENCASUREMENT S-22
 WYE OR TEE SUPPORT S-23
 ALLOWABLE TRENCH WIDTHS S-24
 LOCKING MANHOLE FRAME AND COVER S-25
 NON-REINFORCED PRECAST CONCRETE BRICKER MANHOLE S-26
 CHIMNEY PIPE AND RAISE S-27
 SPECIAL INSPECTION LATERALS S-28
 IN ADDITION THE FOLLOWING SANITATION DISTRICT STANDARDS SHALL APPLY IN THE CONSTRUCTION OF THIS PROJECT:
 STD. MANHOLE, TYPE A S-3-201
 STD. CHIMNEY PIPE S-3-204
 COUNTY OF LOS ANGELES, CALIFORNIA
 THOMAS A. TIDEMANSON, DIRECTOR OF PUBLIC WORKS
 CHARLES W. CARRY, CHIEF ENGINEER
 CO. SAN. DIST. NO. 125
 APPROVED: Dean E. Heltzer, 1-11-88 (DATE)
 S. Santiago, 1-5-88 (DATE)
 REG. C.E. NO. 33134 (DATE)
 LA PUENTE BLDG. DIST. 2



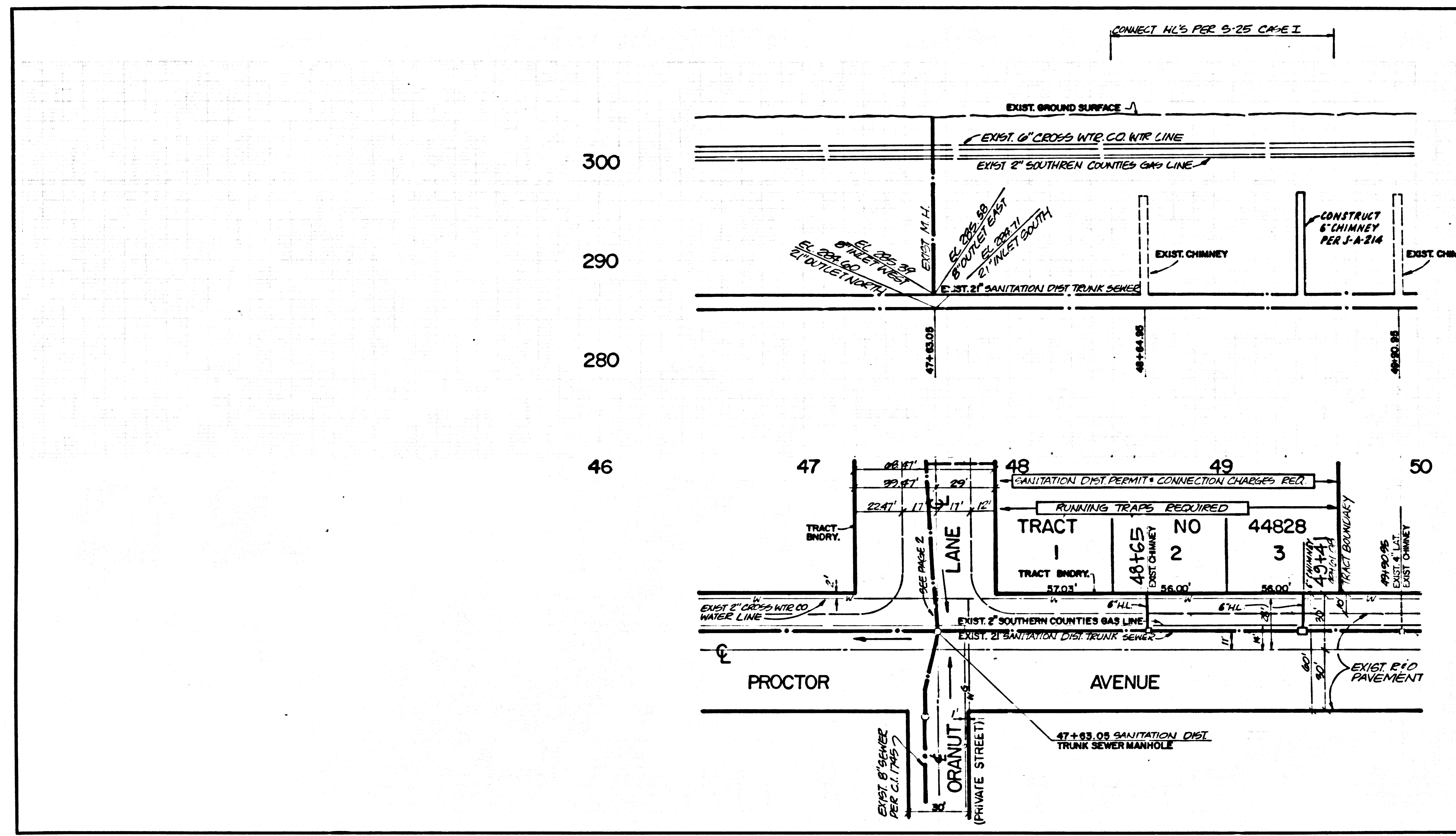
NO CONNECTION FOR THE DISPOSAL OF INDUSTRIAL WASTES SHALL BE MADE TO SEWERS SHOWN ON THESE DRAWINGS UNTIL A PERMIT FOR INDUSTRIAL WASTEWATER DISCHARGE HAS BEEN ISSUED BY THE SANITATION DISTRICTS FOR SAID CONNECTION.
 BEFORE BREAKING INTO OR CONSTRUCTION ON A COUNTY SANITATION DISTRICT SEWER AND PRIOR TO FINAL ACCEPTANCE OF THE PROJECT, SANITATION DISTRICT INSPECTOR SHALL BE NOTIFIED BY PHONE (818) 962-8605 SO THAT REQUIRED INSPECTION CAN BE MADE.

INDEX MAP
 P.C. 10740
 TRACT NO. 44828



P.C. 10740 PAGE 2
 REVIEWED BY: [Signature] 1-5-88 DATE
 DOUBLE SCALE
 SEE SANITATION DISTRICTS PLAN SPECIAL CONNECTION CHARGES
 COLLECT CHARGES AS INDICATED
 52253

1
 0470129
 85844 ON TCAAT



REVIEWED BY *AJW* 1-5-88 PC 10740 PAGE 3
 DATE
 DOUBLE SCALE
 SEE SANITATION DISTRICTS FOR SPECIAL CONNECTION CHARGES

52254



PAGE _____

S
 04501 09 85844 TCART