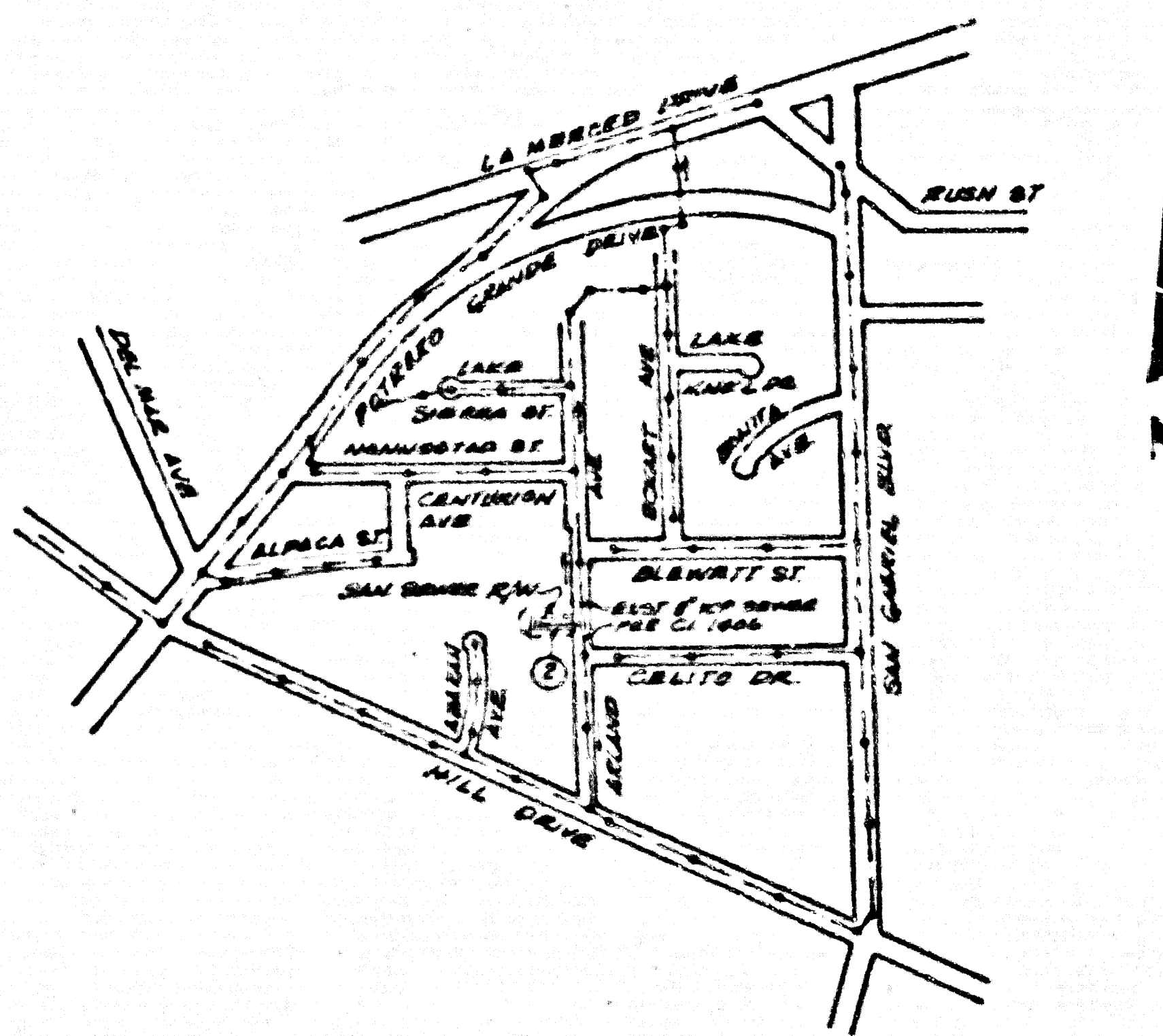


B.M. CY 7757 ELEV. 333.539
 PDBM TAG 1 FT. W/O BCE REF. SO.
 AND 6 1/2 FT. W/O CL INT SAN GABRIEL
 BLVD & W'LL DRIVE
 BASELINE QUAD. 1975



INDEX MAP
 P.C. NO. 10745 TRACT NO. 44845
 SCALE 1" = 600'

- CONSTRUCTION NOTES (CONT.):**
16. ALL CONNECTIONS WITH PART IV OF THE SPECIAL PROVISIONS IS REQUIRED FOR THE INSTALLATION OF A.B.S. COMPOSITE PIPE.
 17. HANGABLE WATER STOP GASKETS AND CLAMPS ARE REQUIRED FOR THE CONNECTION OF A.B.S. COMPOSITE PIPE TO HANGABLE STRUCTURES.
 18. A.B.S. 18" ID SHALL BE USED FOR VTE AND HOUSE LATERAL CONNECTIONS TO A.B.S. COMPOSITE MAINLINE SEWER PIPE.
 19. A.B.S. COMPOSITE PIPE SHALL BE INSTALLED IN CONFORMANCE WITH THE TABLE IN SECTION 9-3.1 OF PART IV OF THE SPECIAL PROVISIONS.
 20. THREE DEGREE DEFLECTION COEFFICIENTS ARE REQUIRED FOR 90 DEGREE OF CURVATURE LESS THAN 300 FEET AND USING A.B.S. COMPOSITE PIPE.
 21. NO CONNECTIONS FOR DISPOSAL OF INDUSTRIAL WASTE IS ALLOWED IF A.B.S. COMPOSITE PIPE IS USED.
 22. SEWER LINE CURVATURE SHALL NOT BE ACHIEVED BY PULLING OF JOINTS OR BY BELTING PIPE END WHEN USING PLASTIC PIPE INCLUDING A.B.S. COMPOSITE PIPE.
 23. ALL VTE'S AND/OR HOUSE LATERALS ARE TO BE LOCATED AT LEAST FIVE FEET APART AND WHEN POSSIBLE NOT CLOSER THAN FIVE FEET TO ANY MANHOLE.
 24. A.B.S. SOLID WALL PIPE IS NOT ACCEPTABLE FOR USE AS MAINLINE SEWER.
 25. ONLY VTE BRANCHES ARE TO BE USED FOR CONNECTION TO A.B.S. COMPOSITE MAINLINE SEWER PIPE.
 26. ALL JOINTS BETWEEN D.I.P. & A.B.S.C.P. SHALL BE MADE WITH APPROVED FITTINGS.

NO CONNECTION FOR THE DISPOSAL OF INDUSTRIAL WASTES SHALL BE MADE TO SEWERS SHOWN ON THESE DRAWINGS UNTIL A PERMIT FOR INDUSTRIAL WASTEWATER DISCHARGE HAS BEEN ISSUED BY THE SANITATION DISTRICTS FOR SAID CONNECTION.

BEFORE BREAKING INTO OR CONSTRUCTION ON A COUNTY SANITATION DISTRICT SEWER AND PRIOR TO FINAL ACCEPTANCE OF THE PROJECT, SANITATION DISTRICT INSPECTOR SHALL BE NOTIFIED BY PHONE (818) 962-8605 SO THAT REQUIRED INSPECTION CAN BE MADE.

- GENERAL NOTES:**
1. ELEVATIONS ARE IN FEET ABOVE U.S.C. & G.S. SEA LEVEL DATUM OF 1929.
 2. NO REVISIONS SHALL BE MADE IN THESE PLANS WITHOUT THE APPROVAL OF THE DIRECTOR OF PUBLIC WORKS.
 3. NO REPRESENTATIVE OF THE DEPARTMENT OF PUBLIC WORKS WILL SURVEY OR LAY OUT ANY PORTION OF THE WORK.
 4. GRADES TO WHICH THIS APPROVEMENT IS TO BE CONSTRUCTED SHALL BE SHOWN ON ALL MANHOLES AND MANHOLE COVERS AND ON ALL STRUCTURES TO BE CONSTRUCTED. THE GRADES SHALL BE ESTABLISHED SO AS TO CONFORM TO A STRAIGHT LINE DRAWN BETWEEN THE END DESIGNATED POINTS.
 5. THE PRIVATE ENGINEER SHALL FURNISH THE EQUIPMENT OF PUBLIC WORKS WITH DRAINAGE DITCHES AND STATIONING FOR ALL HOUSE LATERALS AND 12" OR 14" BRANCHES AND SHALL PROVIDE STAKE PLACES AT 10' INTERVALS FROM THE POINTS TO WHICH THEY ARE TO BE CONSTRUCTED IN A STRAIGHT ALIGNMENT AT RIGHT ANGLES TO THE MAINLINE OF THE SEWER AT AS SHOWN ON THE PLANS. HOUSE LATERALS AND BRANCHES SHALL NOT HAVE AN ANGLE OF LESS THAN 45 DEGREES. ANY CHANGE IN ALIGNMENT SHALL BE REQUESTED BY THE PRIVATE ENGINEER.
 6. THE PRIVATE ENGINEER SHALL FURNISH THE HOUSE LATERAL DEPTH AT THE PROPERTY LINE BELOW THE CURB ELEVATION FOR EACH HOUSE LATERAL ON THE BRIDGE SHEET.
 7. THE CONTRACTOR SHALL BE RESPONSIBLE FOR OBTAINING ALL NECESSARY PERMITS FROM THE COUNTY ENGINEER AND THE LOS ANGELES DEPARTMENT OF PUBLIC WORKS. THE CONTRACTOR SHALL BE RESPONSIBLE FOR OBTAINING ALL NECESSARY PERMITS FROM THE COUNTY ENGINEER AND THE LOS ANGELES DEPARTMENT OF PUBLIC WORKS. THE CONTRACTOR SHALL BE RESPONSIBLE FOR OBTAINING ALL NECESSARY PERMITS FROM THE COUNTY ENGINEER AND THE LOS ANGELES DEPARTMENT OF PUBLIC WORKS.
 8. APPROVAL OF THIS PLAN BY THE COUNTY OF LOS ANGELES DOES NOT CONSTITUTE A REPRESENTATION AS TO THE ACCURACY OF THE LOCATION OF OR THE EXISTENCE OR NON-EXISTENCE OF ANY UNDERGROUND UTILITY PIPE OR STRUCTURE WITHIN THE LIMITS OF THIS PROJECT. THE CONTRACTOR SHALL BE RESPONSIBLE FOR LOCATING ALL SUCH UTILITIES.
 9. REFER TO SECTION 7.1.1 OF THE STANDARD SPECIFICATIONS, STANDARD SAFETY ORDERS.
 10. PRIOR TO THE BEGINNING OF THE REQUIRED SEWER CONSTRUCTION PERMIT, THE CONTRACTOR SHALL OBTAIN AND FILE WITH THE DEPARTMENT OF PUBLIC WORKS A PERMIT TO EXCAVATE IN THE COUNTY OF LOS ANGELES FROM THE COUNTY ENGINEER. THE DEPARTMENT OF PUBLIC WORKS SHALL BE RESPONSIBLE FOR OBTAINING ALL NECESSARY PERMITS FROM THE COUNTY ENGINEER AND THE LOS ANGELES DEPARTMENT OF PUBLIC WORKS. THE CONTRACTOR SHALL BE RESPONSIBLE FOR OBTAINING ALL NECESSARY PERMITS FROM THE COUNTY ENGINEER AND THE LOS ANGELES DEPARTMENT OF PUBLIC WORKS.

- CONSTRUCTION NOTES:**
1. WORK SHALL BE CONSTRUCTED ACCORDING TO THE STANDARD SPECIFICATIONS FOR PUBLIC WORKS CONSTRUCTION THIS EDITION & TO THE STANDARD SPECIFICATIONS AND COUNTY ENGINEER'S SPECIAL PROVISIONS FOR THE CONSTRUCTION OF SANITARY SEWERS AS SET FORTH IN THE COUNTY ENGINEER'S SPECIAL PROVISIONS.
 2. THE CONTRACTOR SHALL NOTIFY THE CONSTRUCTION DIVISION BY TELEPHONE 226-8881 AT LEAST TWENTY-FOUR HOURS BEFORE STARTING ANY WORK UNDER THIS CONTRACT.
 3. HOUSE LATERALS TO BE CONSTRUCTED WITH INVERTS AT PROPERTY LINE 8 FEET BELOW CURB GRADE EXCEPT AS NOTED.
 4. VTE OR VTE BRANCHES MAY BE USED FOR CONNECTIONS TO MANHOLE SEWERS EXCEPT AS NOTED.
 5. ALL STRUCTURES SHALL BE SETBACK FROM MANHOLES PER 18" OR PRECAST CONCRETE MANHOLES PER 8" IS EXCEPT AS NOTED.
 6. MANHOLE STANDS ON THE PROPERTY LINE OR PROPERTY LINE PRODUCED AT RIGHT ANGLES TO THE SEWER LINE AT THE CENTER LINE OF EACH MANHOLE.
 7. MANHOLE TOPS IN APPROVED RIGHTS OF WAY TO BE 8 INCH ABOVE FINISHED GRADE.
 8. UNFITTED CLAY PIPE JOINTS SHALL BE TYPE "D" OR "E" PER STANDARD SPECIFICATIONS SECTION 200-2.
 9. IF A MANHOLE IS IN WITHIN THREE FEET OF THE SEWER, THE SEWER SHALL BE ENCASED PER 25" CASE & PROTECT ON EACH SIDE FROM THE POINT OF INTERFERENCE.
 10. IN CHANGING THE COURSE OF CONSTRUCTION IT IS DETERMINED THAT THERE IS LESS THAN FOUR FEET OF COVER OVER THE TOP OF A MAINLINE OR HOUSE LATERAL VTE SEWER WHICH IS NOT INDICATED ON THE PLANS, THE PIPE SHALL BE ENCASED PER 25" CASE UNLESS OTHERWISE APPROVED BY THE COUNTY ENGINEER.
 11. ALL JOINTS BETWEEN CAST IRON PIPE AND UNFITTED CLAY PIPE SHALL BE MADE WITH A RUBBER SLEEVE JOINT TYPE "D" OR "E" WITH SLEEVES IF NECESSARY PER STANDARD SPECIFICATIONS SECTION 200-2.
 12. SEWERS TO BE TESTED FOR LEAKAGE PER SECTION 200-1.4 OF THE STANDARD SPECIFICATIONS AND SPECIAL PROVISIONS.
 13. REPAIRS TO ALL TRENCHES WITHIN PAVED AREAS TO MEET LOS ANGELES COUNTY PUBLIC WORKS OR CALIFORNIA STATE HIGHWAY REQUIREMENTS AS ACCORDANCE WITH PERMITS.
 14. FULL COMPLIANCE WITH SECTION 200-1.4 OF THE STANDARD SPECIFICATIONS AND SPECIAL PROVISIONS SHALL BE REQUIRED BY THE COUNTY ENGINEER TO THE EXTENT OF A CERTIFICATE OF PARTIAL ACCEPTANCE.
 15. SPECIAL BACKFILL IN BASEMENT CONSTRUCTION IS BACKFILL FRENCH AND REPLACE OTHER EARTH ROAS TO ACHIEVE THE NATURAL OR FINISHED GRADES AND SLIPES SHOWN ON THE GRADE PLAN APPROVED FOR THIS DEVELOPMENT BY THE SANITATION DISTRICT INSPECTOR. IN ALL BACKFILL AND EARTH REPLACEMENT SHALL BE COMPACTED TO A MINIMUM OF 95% OF STANDARD PROCTOR AT 18" STD METHOD OF TEST DONE BY A QUALIFIED ACCEPTABLE CERTIFICATION OF SUCH COMPACTION SHALL BE SUBMITTED TO THE COUNTY ENGINEER, DEPARTMENT OF PUBLIC WORKS.

PROFILE ALIGNMENT AND GRADE OF
SANITARY SEWERS
 TO BE CONSTRUCTED IN
TRACT NO. 44845
PRIVATE CONTRACT NO. 10745
 INDEX U-32
 1 SHEET 2 PAGES
 52103

SCALE: HORIZ. 1" = 40'
 VERT. 1" = 4'
 JULY 6, 1987

PREPARED IN THE OFFICES OF
 LOREN PHILLIPS & ASSOCIATES, INC.
 1740 E. HUNTINGTON DR. ARTES CA. 91010 STE. 208
 PH. 818-359-4511 FAX 818-681-7825
 BY: John N. Gilman
 REG. C.E. No. 12764

THE FOLLOWING LATEST REVISED STANDARD PLANS ON FILE IN THE OFFICE OF THE DEPARTMENT OF PUBLIC WORKS SHALL APPLY TO THE CONSTRUCTION OF THIS PROJECT:

LEGEND	0-1
MINIMUM PUBLIC SAFETY REQUIREMENTS	0-2
BRICK MANHOLE	0-3
STANDARD MANHOLE STEP	0-17
SECTIONS FOR SEWER PIPE	0-21
CRACKING AND REPAIRMENT	0-22
PIPE OR TEE SUPPORT	0-23
ALLIABLE TRENCH WIDTHS	0-24
LOCKING MANHOLE FRAME AND COVER	0-25
NON-REINFORCED PRECAST CONCRETE MANHOLE	0-26

EXPIRATION DATE 3/31/89

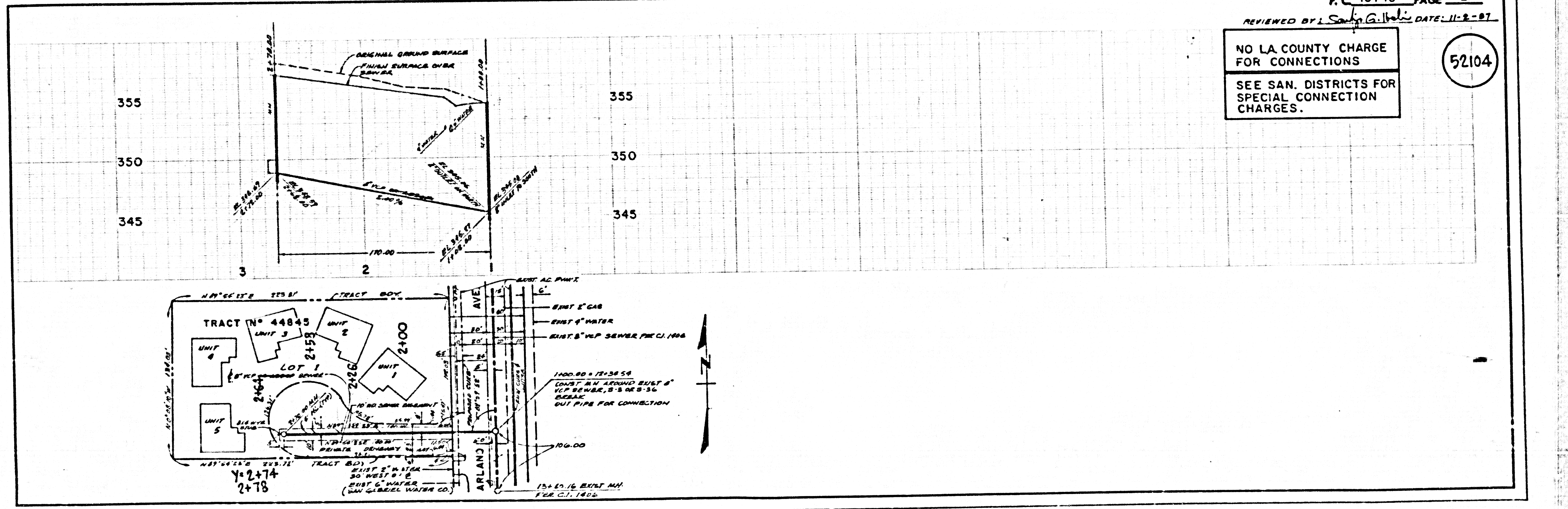
COUNTY OF LOS ANGELES, CALIFORNIA
 THOMAS A. TIDEMANSON
 DIRECTOR OF PUBLIC WORKS

CHARLES W. CARRY
 CHIEF ENGINEER
 CO. SAN. DIST. NO. 15

APPROVED: *[Signature]* 11/9/87
 APPROVED: *[Signature]* 11/9/87

CHECKED: *[Signature]* 11/12/87
 REG. C.E. NO. 12842

SAN GABRIEL VALLEY BLDG. DIST. 3



P.C. 10745 PAGE 2 OF 2
 REVIEWED BY: *[Signature]* DATE: 11-2-87

NO LA COUNTY CHARGE FOR CONNECTIONS
 SEE SAN. DISTRICTS FOR SPECIAL CONNECTION CHARGES.

52104