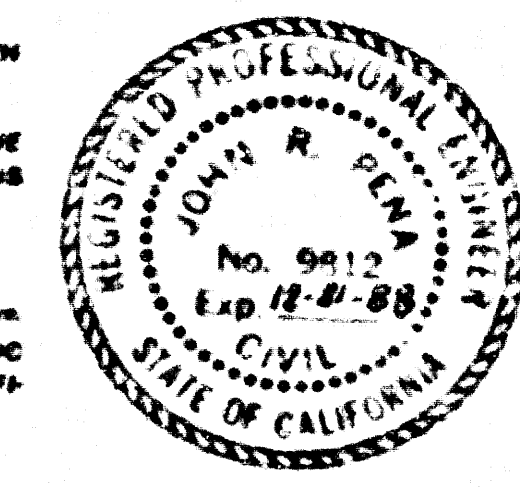


SANITARY SEWERS

TO BE CONSTRUCTED IN
TRACT NO. 36309
 A-30
PRIVATE CONTRACT NO. 10751
 INDEX A-50
 3 SHEETS, 6 PAGES



SCALE: HWT 1"=6'
 VERT 1"=6'
 AUGUST, 1987

PREPARED IN THE OFFICES OF
SIMAND ENGINEERING ASSOCIATES
 8730 BRADLEY BLVD., VAN NUYS, CALIF. 91411 (818) 787-8550
 BY: *[Signature]*
 REG. C.E. NO. 9912

52081

THE FOLLOWING LATEST REVISED STANDARD PLANS ON FILE IN THE OFFICE OF THE DEPARTMENT OF PUBLIC WORKS SHALL APPLY TO THE CONSTRUCTION OF THIS PROJECT:

LEGEND	0-1
MINIMUM PUBLIC SAFETY REQUIREMENTS	0-2
BRANCH MANHOLE	0-3
STANDARD MANHOLE STEP	0-17
BEDDING FOR SEWER PIPE	0-21
CRADLING AND ENCASUREMENT	0-22
WYE OR TEE SUPPORT	0-26
ALLOWABLE TRENCH WIDTHS	0-30
LOCKING MANHOLE FRAME AND COVER	0-36
NON-REINFORCED PRECAST CONCRETE MANHOLE	0-38
ANCHOR BLOCK	0-39
GROUND PROTECTION IN STEEP SLOPES	0-39

COUNTY OF LOS ANGELES, CALIFORNIA

THOMAS A. TIEMANSON
 DIRECTOR OF PUBLIC WORKS

CHARLES W. CARRY
 CHIEF ENGINEER

APPROVED *[Signature]* 9-15-87
 REVIEWED BY *[Signature]* 9-15-87
 TIERRA ENGINEERING CO. (DATE)
 REG. C.E. NO. 8359
 SANTA CLARITA VALLEY BLDG. DIST. 22

GENERAL NOTES:

- ELEVATIONS ARE IN FEET ABOVE U.S.C. & G.S. SEA LEVEL DATUM OF 1929.
- NO REVISIONS SHALL BE MADE IN THESE PLANS WITHOUT THE APPROVAL OF THE DIRECTOR OF PUBLIC WORKS.
- NO REPRESENTATIVE OF THE DEPARTMENT OF PUBLIC WORKS WILL SURVEY OR LAYOUT ANY PORTION OF THE WORK.
- GRADES TO WHICH THIS IMPROVEMENT IS TO BE CONSTRUCTED ARE SHOWN ON PLANS AND PROFILES. GRADE POINTS FOR TOP OF CURBS, CENTER LINE OF STREETS OR CENTER LINE OF ALL LINES ARE SHOWN BY CIRCLES OR SQUARES AT ALL POINTS BETWEEN MANHOLES. THE GRADE SHALL BE ESTABLISHED SO AS TO CONFORM TO A STRAIGHT LINE CURVE BETWEEN SAID DESIGNATED POINTS.
- THE PRIVATE ENGINEER SHALL FURNISH THE DEPARTMENT OF PUBLIC WORKS WITH GRADE SHEETS AND STATIONING FOR ALL HOUSE LATERALS AND "Y" OR "T" BRANCHES AND SHALL PROVIDE STAKE PLACEMENT AT THE BRANCH LOCATIONS WITH STATIONING PLAINLY MARKED. ALL HOUSE LATERALS SHALL BE CONSTRUCTED IN A STRAIGHT LINE FROM THE MANHOLE TO THE BRANCH LOCATIONS AS SHOWN ON THE PLANS. HOUSE LATERALS SHALL NOT HAVE AN ANGLE OF LESS THAN 90° WITH THE MAIN LINE SEWER. ANY CHANGE IN ALIGNMENT SHALL BE REQUESTED IN WRITING BY THE PRIVATE ENGINEER.
- THE PRIVATE ENGINEER SHALL FURNISH THE HOUSE LATERAL, WITHIN THE PROPERTY LINE, BELOW THE TOP OF CURB ELEVATION FOR EACH HOUSE LATERAL ON THE GRADE BY FEET.
- WORK SHALL BE STARTED THE CONTRACTOR MUST OBTAIN A PERMIT TO EXCAVATE IN COUNTY STREETS FROM THE COMPT. DIV. OF THE LOS ANGELES DEPARTMENT OF PUBLIC WORKS, PERMIT OFFICE NO. 8... AND IN A FREE TO THE DIRECTOR OF PUBLIC WORKS, 8730 BRADLEY ST., LOS ANGELES, CALIFORNIA 91411 TO COVER THE COST OF CONSTRUCTION INSPECTION AND RECORD PLANS.
- IF WORK IS TO BE DONE IN STATE HIGHWAY A PERMIT MUST BE OBTAINED FROM THE STATE OF CALIFORNIA, DIVISION OF HIGHWAYS, 120 SOUTH BRIDGE STREET, LOS ANGELES, CALIFORNIA.
- APPROVAL OF THIS PLAN BY THE COUNTY OF LOS ANGELES DOES NOT CONSTITUTE A REPRESENTATION AS TO THE ACCURACY OF THE LOCATION OF OR THE EXISTENCE OR NON-EXISTENCE OF ANY UNDERGROUND UTILITIES OR STRUCTURES WITHIN THE LIMITS OF THIS PROJECT. THIS NOTE APPLIES TO ALL PAGES.
- REFER TO SECTION 104.1 OF THE STANDARD SPECIFICATIONS REGARDING SAFETY ORDERS.
- IN ACCORD WITH THE REQUIREMENTS OF THE REQUIRED SEWER CONSTRUCTION, PERMIT THE CONTRACTOR SHALL OBTAIN AND FILE WITH THE DEPARTMENT OF PUBLIC WORKS COPIES OF A PERMIT TO EXCAVATE IN COUNTY STREETS FROM THE COMPT. DIV. OF THE DEPARTMENT OF PUBLIC WORKS A PERMIT FOR EXCAVATIONS AND TRENCHES FROM THE STATE OF CALIFORNIA, A DIVISION OF INDUSTRIAL SAFETY AND A CERTIFICATE OF WORKERS COMPENSATION INSURANCE WITH THE DEPARTMENT OF PUBLIC WORKS, 8730 BRADLEY ST., ROOM A-309, L.A. CALIF. 90033, NAMED AS THE CERTIFICATE HOLDER TO BE NOTIFIED 90 DAYS PRIOR TO CANCELLATION OF PLAN.

CONSTRUCTION NOTES:

- WORK SHALL BE CONSTRUCTED ACCORDING TO THE STANDARD SPECIFICATIONS FOR PUBLIC WORKS CONSTRUCTION 1986 EDITION WITH THE EXCEPTIONS AND DEPT. OF PUBLIC WORKS SPECIAL PROVISIONS FOR THE CONSTRUCTION OF SANITARY SEWERS DATED SEPTEMBER 22, 1978. AND SHALL BE PROSECUTED ONLY IN THE PRESENCE OF THE DEPT. OF PUBLIC WORKS.
- THE CONTRACTOR SHALL NOTIFY THE CONSTRUCTION DIVISION BY TELEPHONE, 226-8281 AT LEAST TWENTY-FOUR HOURS BEFORE STARTING ANY WORK UNDER THIS CONTRACT.
- HOUSE LATERALS TO BE CONSTRUCTED WITH INVERTS AT PROPERTY LINE 8 FEET BELOW CURB GRADE EXCEPT AS NOTED.
- WYE OR TEE BRANCH: 12 MAY BE USED FOR CONNECTIONS TO MAINLINE SEWERS EXCEPT AS NOTED.
- ALL STRUCTURES SHALL BE EITHER BRICK MANHOLES PER S-3 OR PRECAST CONCRETE MANHOLES PER S-38 EXCEPT AS NOTED.
- PROVIDE STAKES ON THE PROPERTY LINE OR PROPERTY LINES PRODUCED AT RIGHT ANGLES TO THE SEWER LINE AT THE CENTER LINE OF EACH MANHOLE.
- MANHOLE TOPS ON UNIMPROVED RIGHTS OF WAY TO BE SIX INCHES ABOVE FINISHED GRADE.
- WYTHRED CLAY PIPE JOINTS SHALL BE TYPE "D" OR "E" PER STANDARD SPECIFICATIONS SECTION 200-2.
- IF A HOUSE LATERAL IS LESS THAN THREE FEET OF THE SEWER THE SEWER SHALL BE ENCASED PER S-33 CASE II PROTECT ON EACH SIDE FROM THE POINT OF INTERFERENCE.
- IF DURING THE COURSE OF CONSTRUCTION IT IS DETERMINED THAT THERE IS LESS THAN FOUR FEET OF COVER OVER THE TOP OF A MAINLINE OR HOUSE LATERAL "Y" OR "T" SEWER WHICH IS NOT INDICATED ON THE PLANS, THE PIPE SHALL BE ENCASED PER S-33 CASE II UNLESS OTHERWISE APPROVED BY THE DIRECTOR OF PUBLIC WORKS.
- ALL JOINTS BETWEEN CAST IRON PIPE AND WYTHRED CLAY PIPE SHALL BE MADE WITH A RUBBER SLEEVE JOINT TYPE "C" OR "D" (WITH WYTHRED IF NECESSARY) PER STANDARD SPECIFICATIONS, SECTION 200-2.
- SEWERS TO BE TESTED FOR LEAKAGE PER SECTION 200-1.4 OF THE STANDARD SPECIFICATIONS AND SPECIAL PROVISIONS.
- RESURFACE ALL TRENCHES WITHIN PAVED AREAS TO MEET LOS ANGELES COUNTY PUBLIC WORKS OR CALIFORNIA STATE HIGHWAY REQUIREMENTS IN ACCORDANCE WITH PERMITS.
- FULL COMPLIANCE WITH SECTION 200-1.3.4 OF THE SPS SPECIFICATIONS WILL BE REQUIRED FOR BACKFILL IN STREETS. CERTIFICATION OF BACKFILL COMPACTOR AND SAND EQUIVALENTS BY A QUALIFIED REGISTERED TESTING LABORATORY SHALL BE PROVIDED BY THE PERMITTEE PRIOR TO THE ISSUANCE OF A CERTIFICATE OF PARTIAL ACCEPTANCE.
- SPECIAL BACKFILL IN EASEMENT CONSTRUCTION IN BACKFILL TRENCH AND REPLACE OTHER LARTR SO AS TO ACHIEVE THE NATURAL OR FINISHED GRADES AND SLOPES SHOWN ON THE GRADING PLAN APPROVED FOR THIS DEVELOPMENT BY THE LAND REVENUE DIVISION. IN ALL BACKFILL AND LARTR REPLACEMENT SHALL BE COMPACTED TO A MINIMUM OF 90% OR MAXIMUM OF 95% PER A.S.T.M. STD. METHOD OF TEST D698-57 AS MODIFIED. ACCEPTABLE CERTIFICATION OF SUCH COMPACTOR SHALL BE SUBMITTED TO THE CONSTRUCTION DIVISION, DEPT. OF PUBLIC WORKS.

DOUBLE SCALE

CONSTRUCTION NOTES: (CONT.)

- FULL COMPLIANCE WITH PART IV OF THE SPECIAL PROVISIONS IS REQUIRED FOR THE INSTALLATION OF A.B.S. COMPOSITE PIPE.
- MANHOLE WATER STOP GASKETS AND CLAMPS ARE REQUIRED FOR THE CONNECTION OF A.B.S. COMPOSITE PIPE TO MANHOLE STRUCTURES.
- A.B.S. SOLID WALL PIPE MUST BE USED FOR WYE AND HOUSE LATERAL CONNECTIONS TO A.B.S. COMPOSITE MAINLINE SEWER PIPE.
- A.B.S. COMPOSITE PIPE SHALL BE BEDDED IN CONFORMANCE WITH THE TABLE IN SECTION B-31 PART IV OF SPECIAL PROVISIONS.
- THREE DEGREE DEFLECTION COUPLERS ARE REQUIRED FOR RADII OF CURVATURE LESS THAN 200 FEET WHEN USING B'A & B COMPOSITE PIPE.
- NO CONNECTIONS FOR DISPOSAL OF INDUSTRIAL WASTE IS ALLOWED IF A.B.S. COMPOSITE PIPE IS USED.
- SEWER LINE CURVATURE SHALL NOT BE ACHIEVED BY PULLING OF JOINTS OR BEVELING PIPE ENDS WHEN USING PLASTIC PIPE INCLUDING A.B.S. COMPOSITE PIPE.
- ALL WYES AND/OR HOUSE LATERALS ARE TO BE LOCATED AT LEAST FIVE FEET APART AND WHEN POSSIBLE, NOT CLOSER THAN FIVE FEET TO ANY MANHOLE.
- A.B.S. SOLID WALL PIPE IS NOT ACCEPTABLE FOR USE AS MAINLINE SEWER.
- ONLY WYE BRANCHES ARE TO BE USED FOR CONNECTION TO A.B.S. COMPOSITE MAINLINE SEWER PIPE.

NO CONNECTION FOR THE DISPOSAL OF INDUSTRIAL WASTES SHALL BE MADE TO SEWERS SHOWN ON THESE DRAWINGS UNTIL A PERMIT FOR INDUSTRIAL WASTEWATER DISCHARGE HAS BEEN ISSUED BY THE SANITATION DISTRICTS FOR SAID CONNECTION.

BEFORE BREAKING INTO OR CONSTRUCTION ON A COUNTY SANITATION DISTRICT SEWER AND PRIOR TO FINAL ACCEPTANCE OF THE PROJECT, SANITATION DISTRICT INSPECTOR SHALL BE NOTIFIED BY PHONE (818) 962-8605 SO THAT REQUIRED INSPECTION CAN BE MADE.

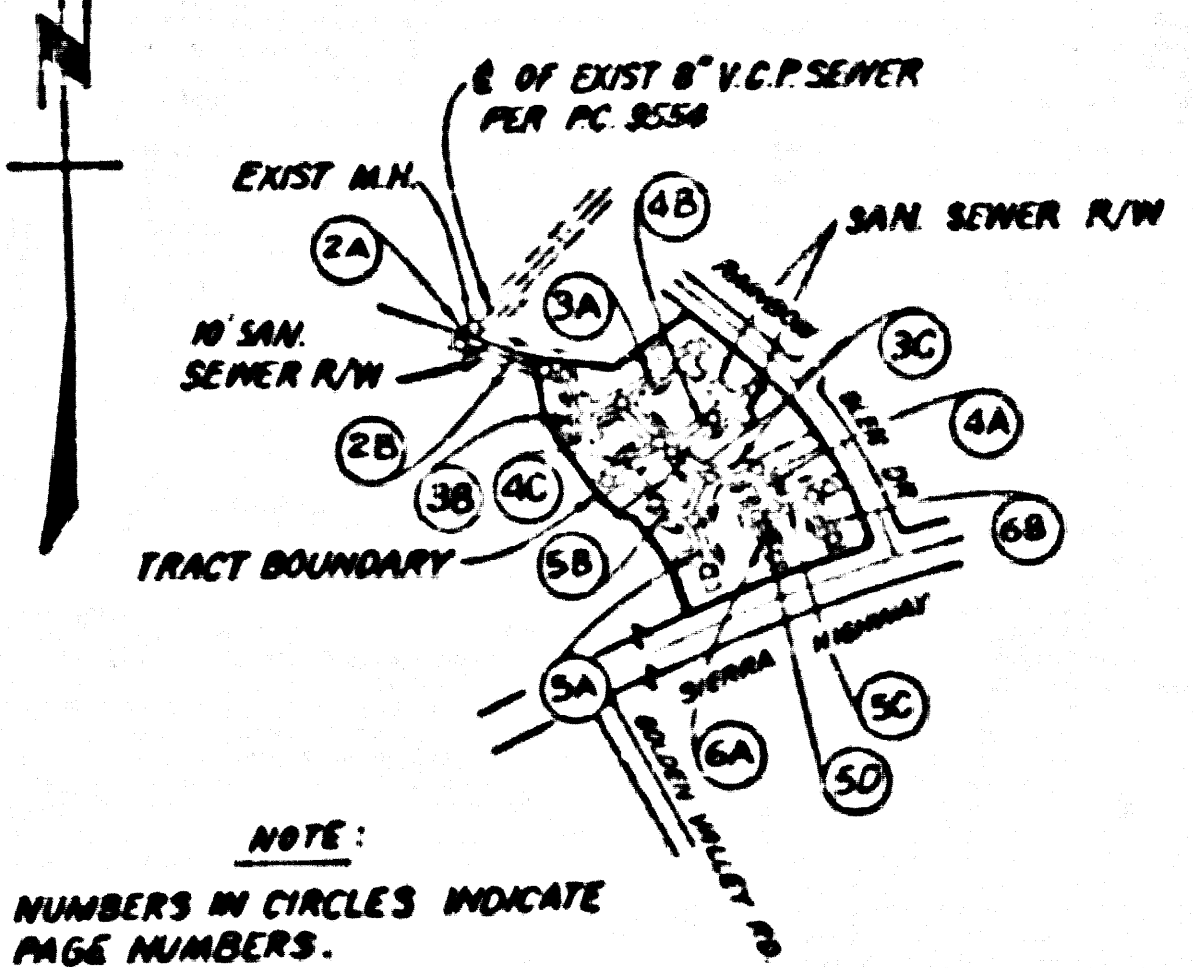
APPROVAL OF THIS PLAN BY THE
LAND DEVELOPMENT DIVISION
 IS BASED ON A REVIEW BY AN
ENGINEERING CONSULTANT UNDER
 CONTRACT WITH THE COUNTY OF
 LOS ANGELES.

B.M. PL 3755 ELEV. 1522.473
 RUBM TAG IN CS 1 FT W BCR 44 FT. N
 + 80 FT W C/L INT SIERRA HWY.
 + FRIENDLY VALLEY PKWY.
 NEWHALL QUAD. 1983

REVISION NO. 1

REVISE PROFILE ON PAGE 3C, 4A-4C, 5A-5D
 6A AND 6B (CURB & M.L. SEWER ELEV'S.)

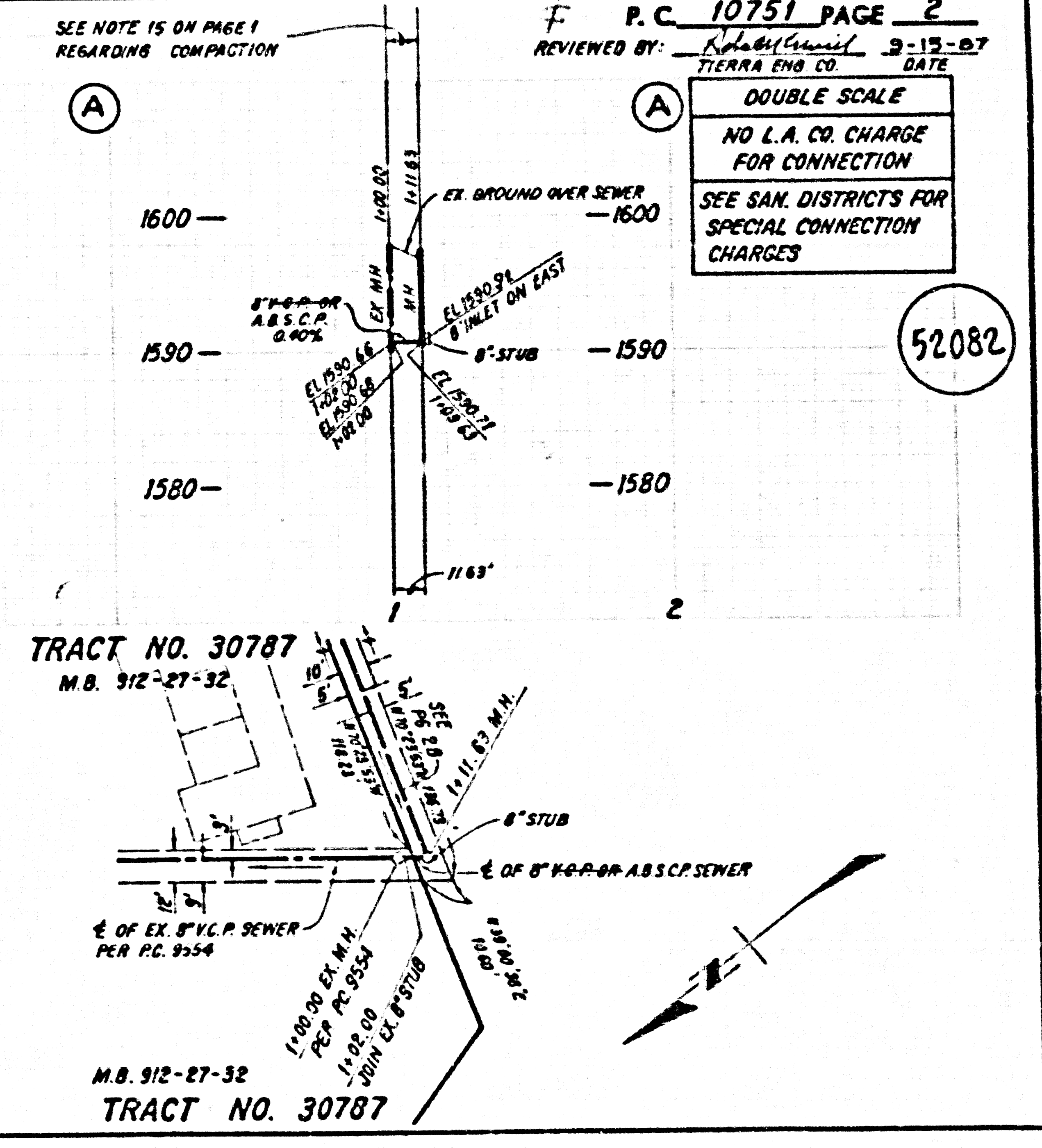
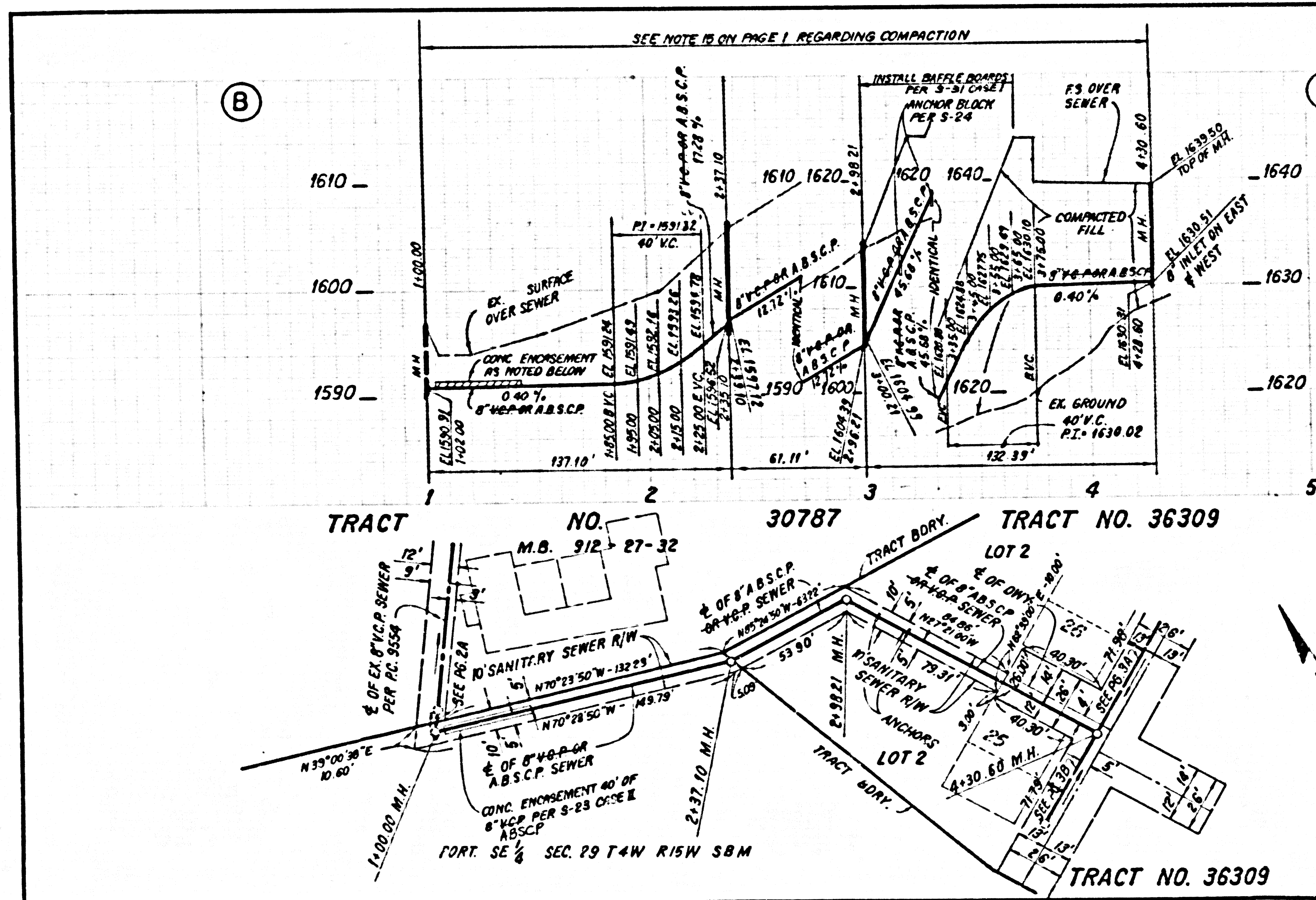
APPROVED: *[Signature]* 2-11-88
 DEPARTMENT OF PUBLIC WORKS

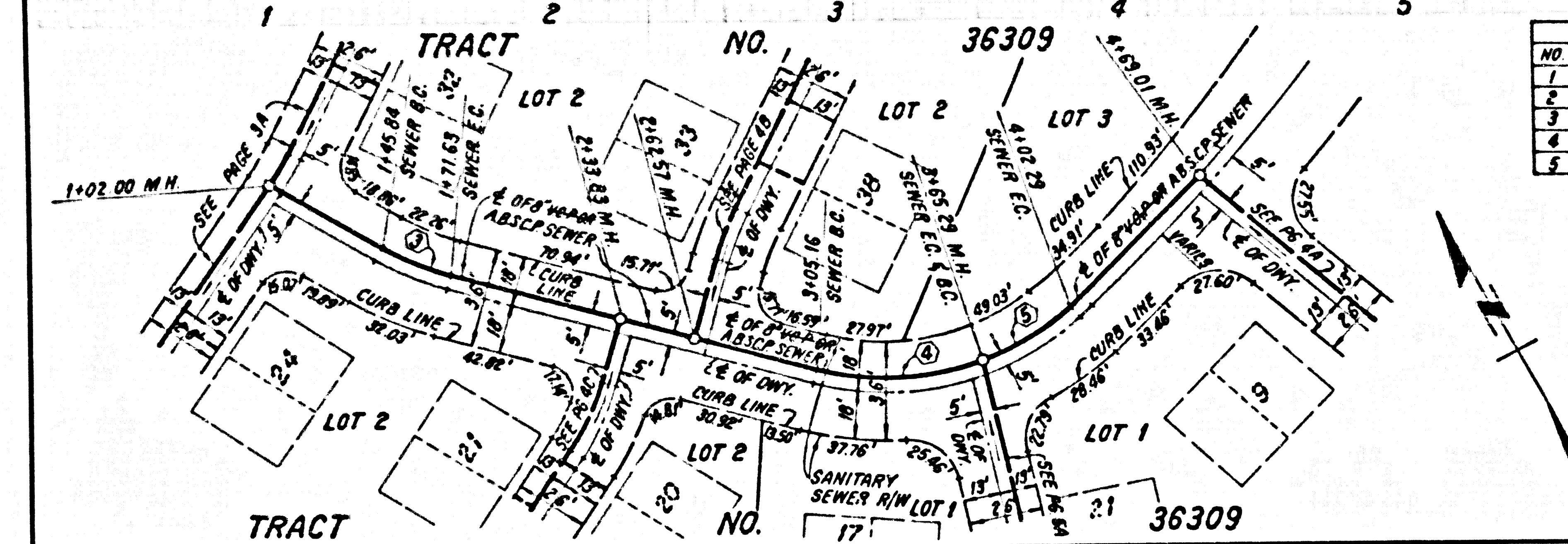
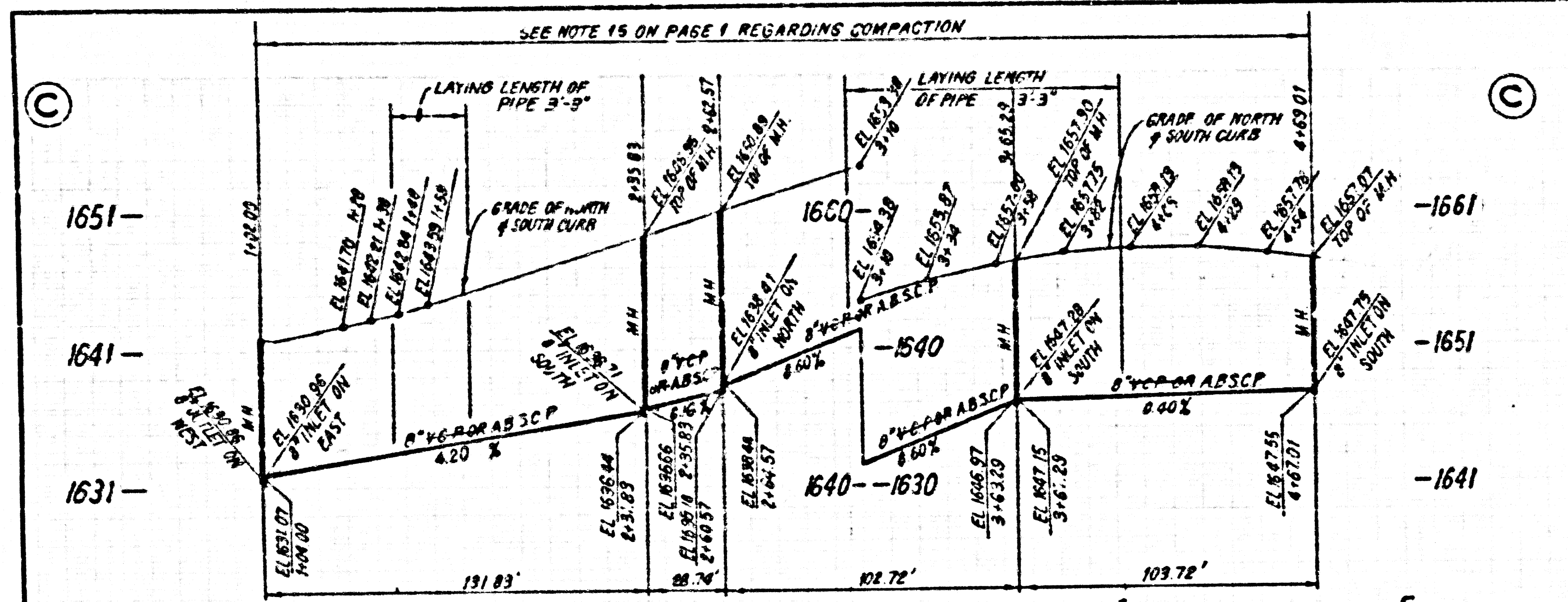


NOTE:
 NUMBERS IN CIRCLES INDICATE
 PAGE NUMBERS.

INDEX MAP

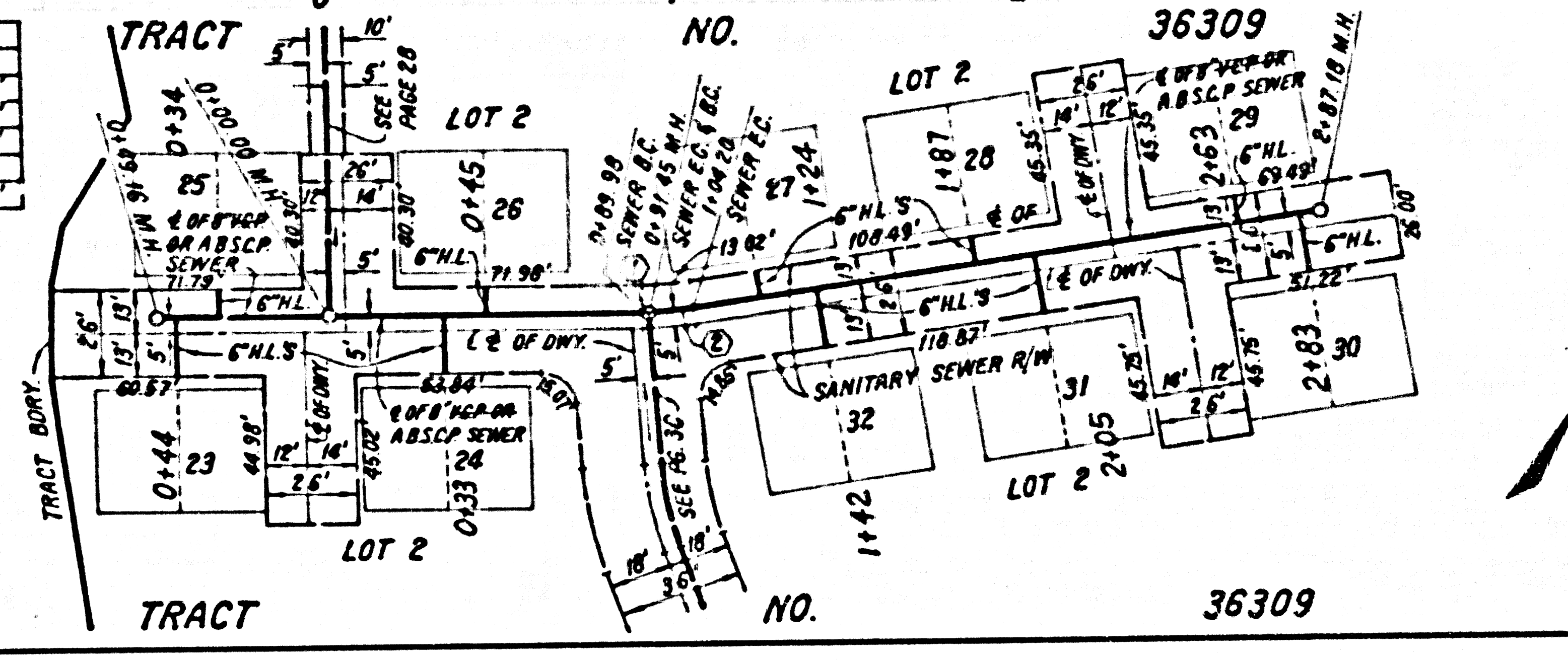
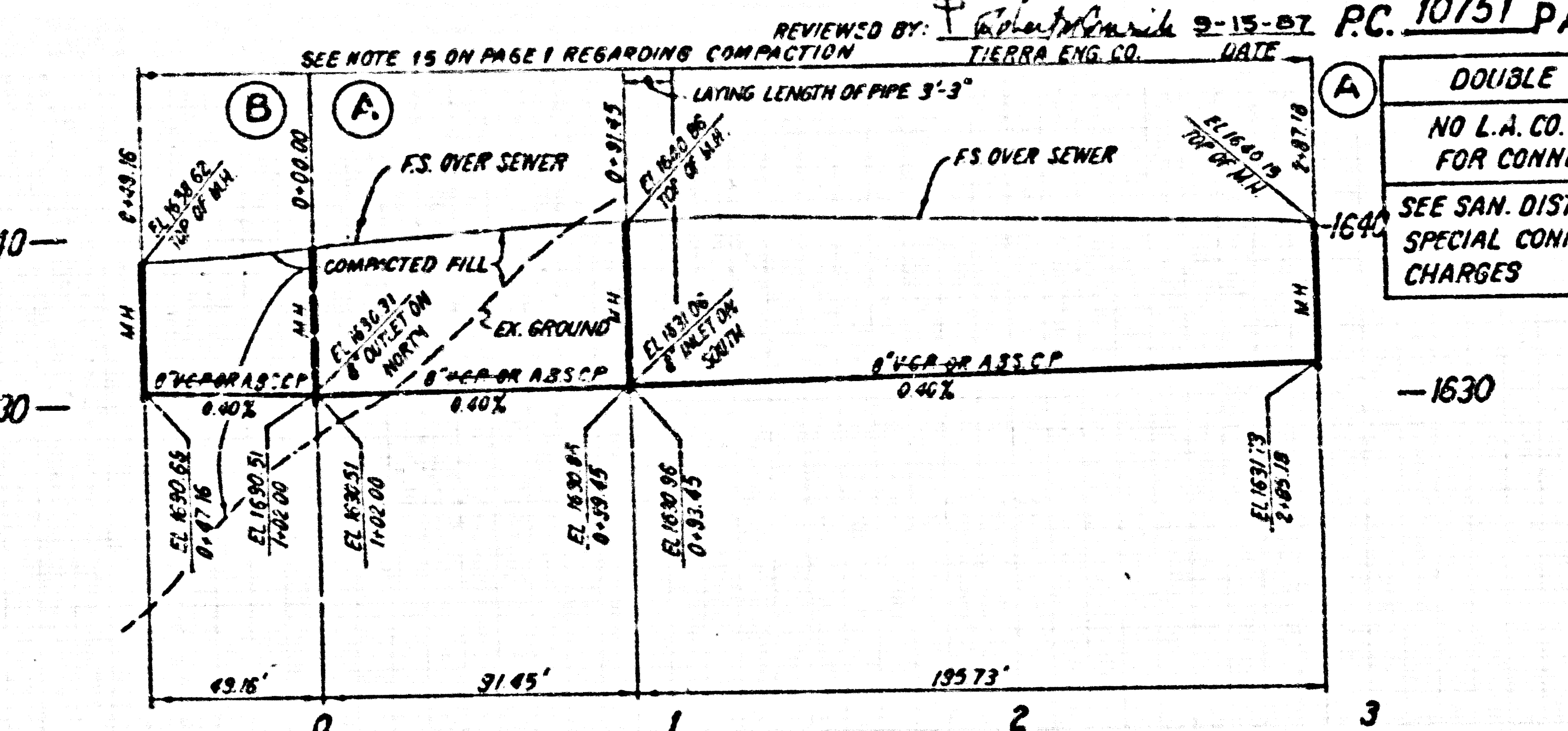
TRACT NO. 36309
 P.C. NO. 10751
 SCALE: 1"=600'





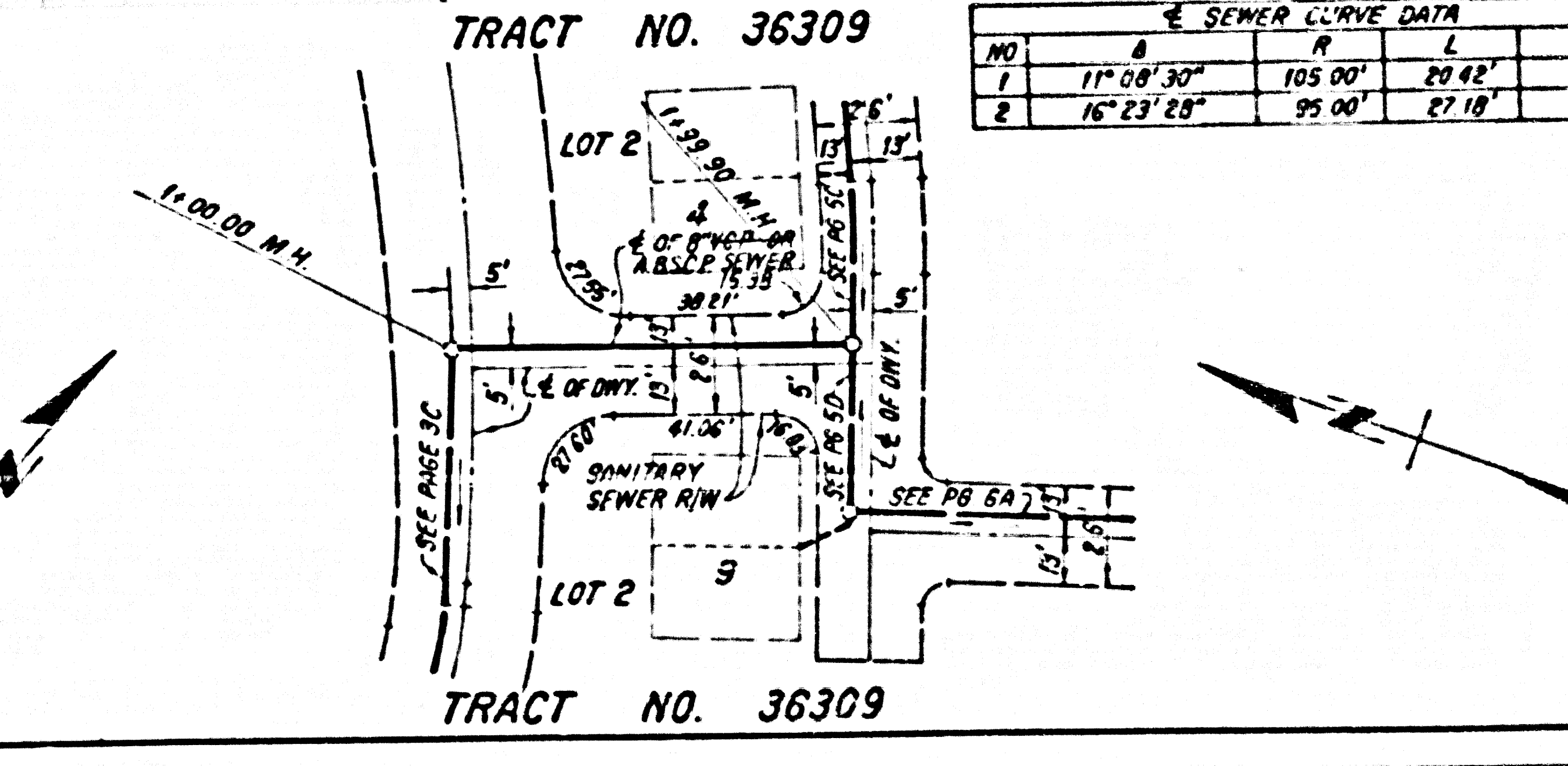
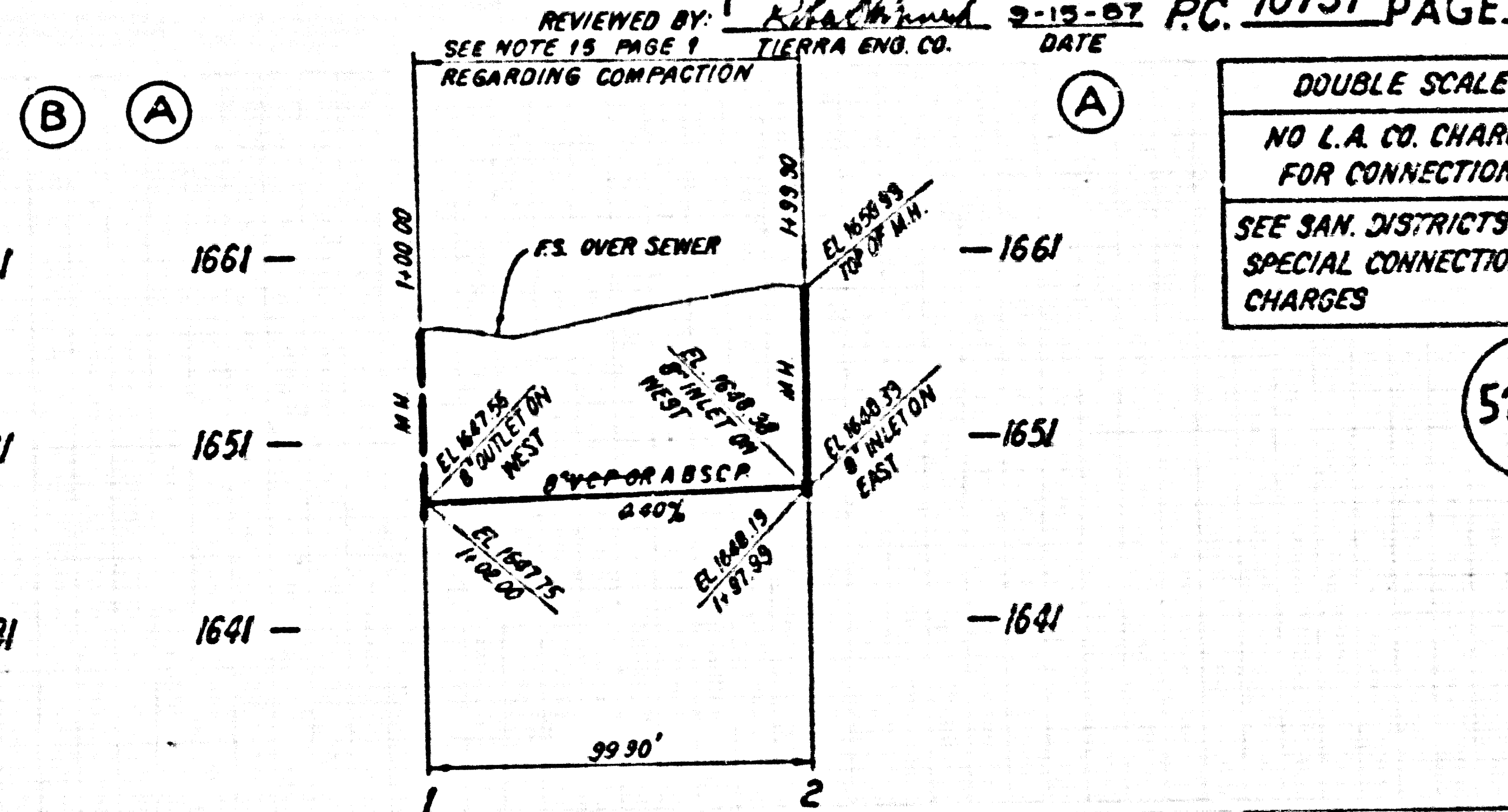
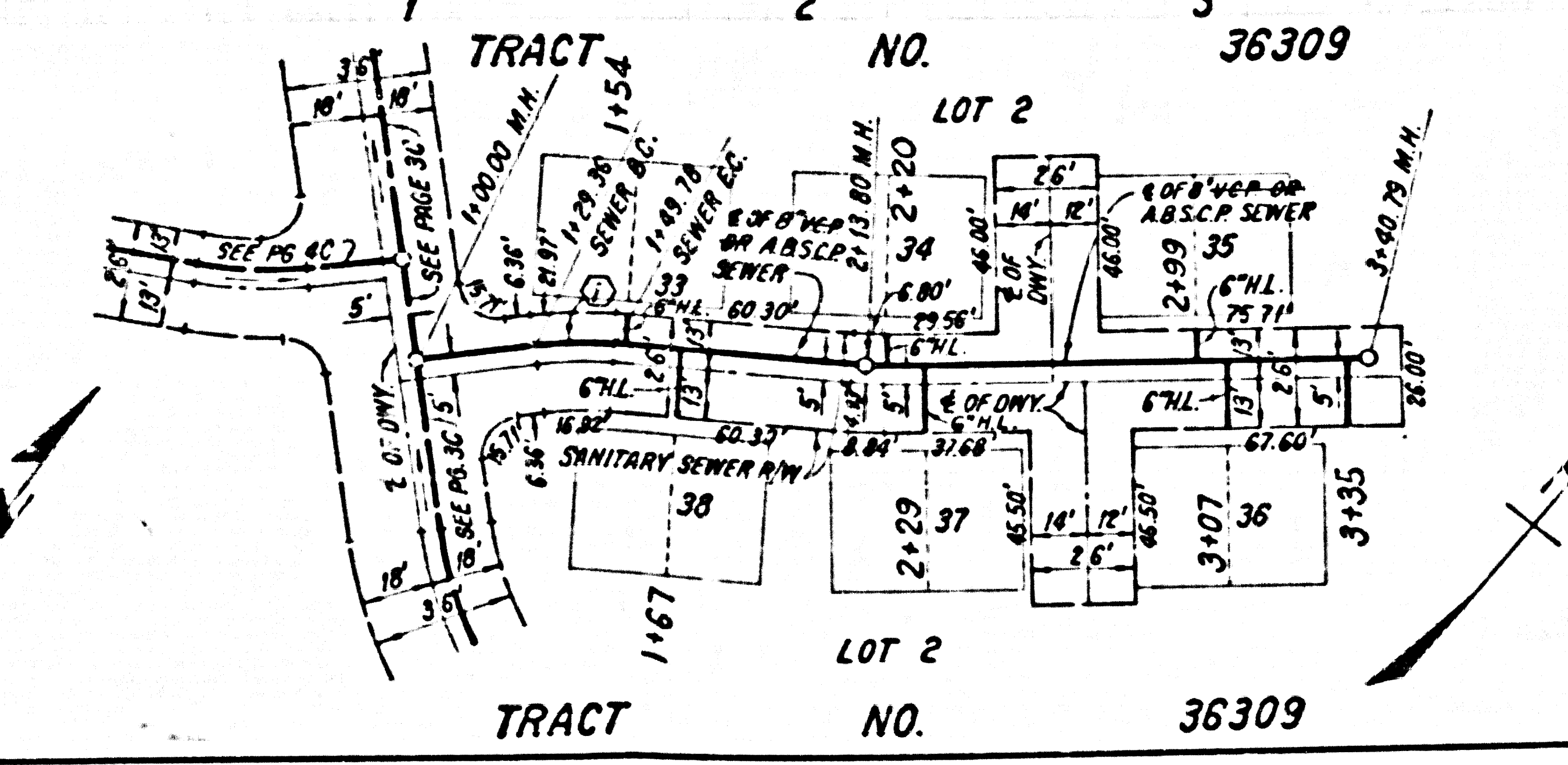
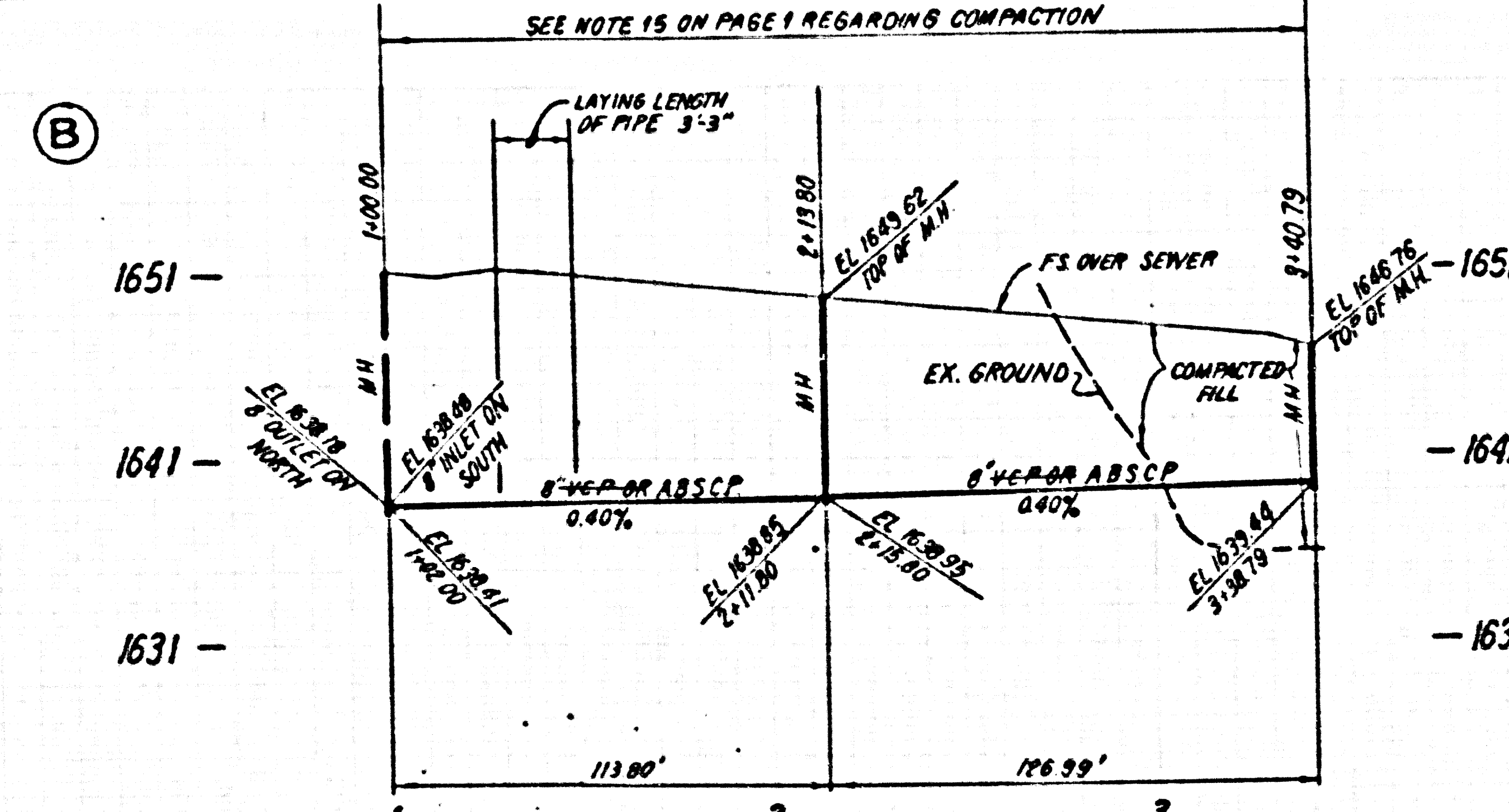
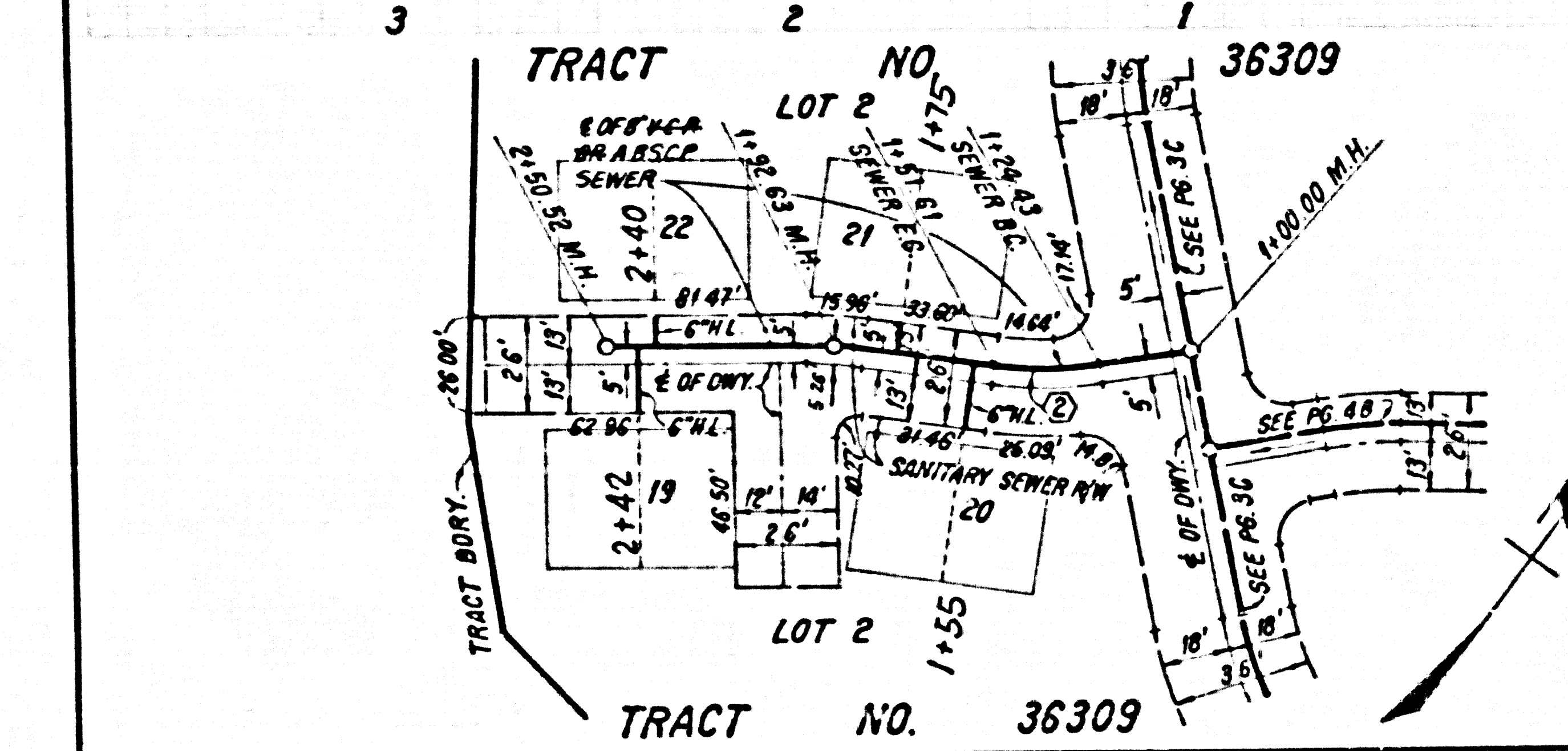
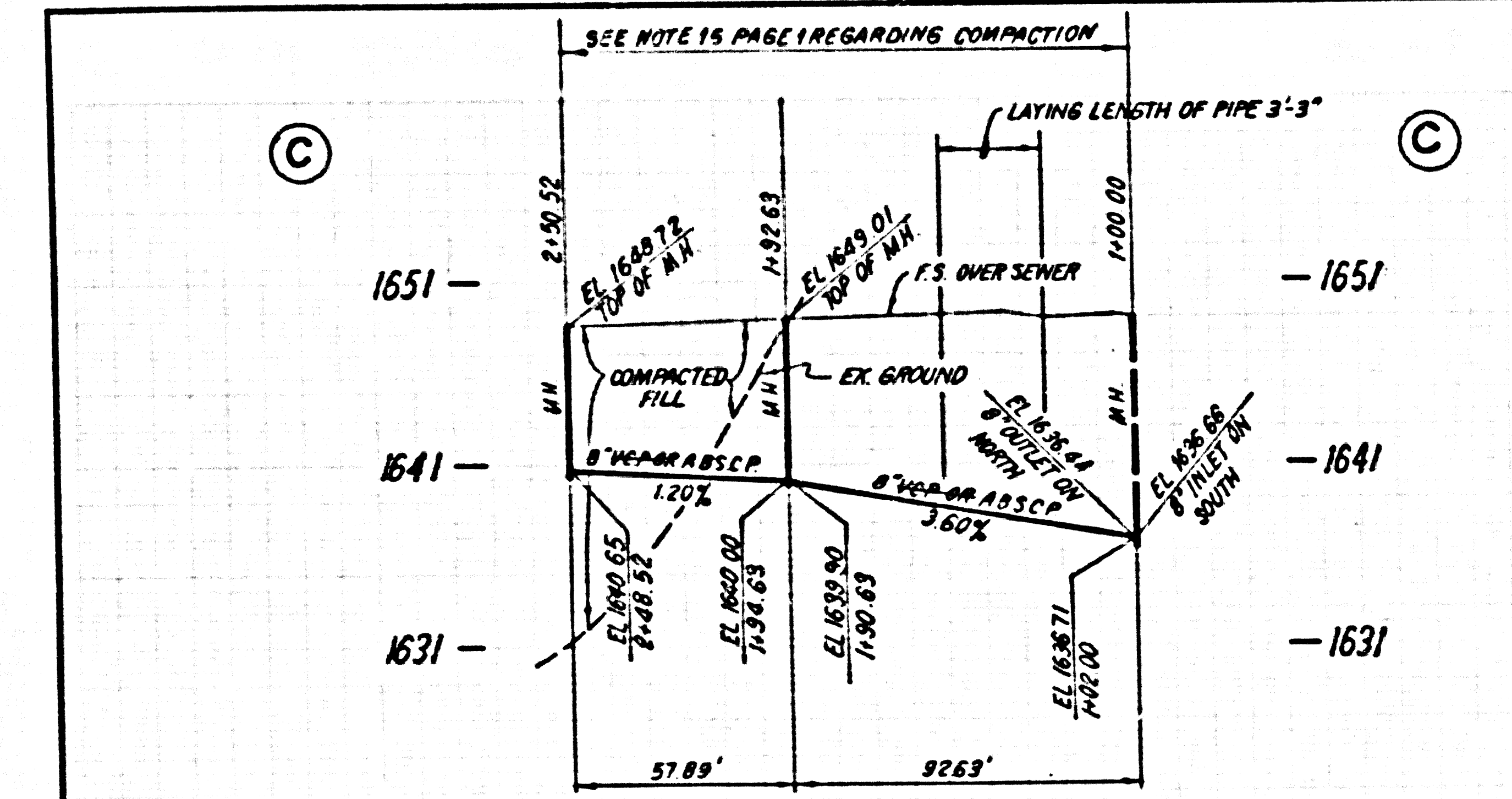
SEWER CURVE DATA

NO.	A	R	L	T
1	0° 53' 19"	95.00'	1.47'	0.76'
2	7° 41' 20"	95.00'	12.75'	6.38'
3	15° 33' 14"	95.00'	25.79'	12.97'
4	36° 15' 50"	95.00'	60.13'	31.11'
5	22° 18' 49"	95.00'	37.00'	18.74'



DOUBLE SCALE
NO L.A. CO. CHARGE
FOR CONNECTION
SEE SAN. DISTRICTS FOR
SPECIAL CONNECTION
CHARGES

52083



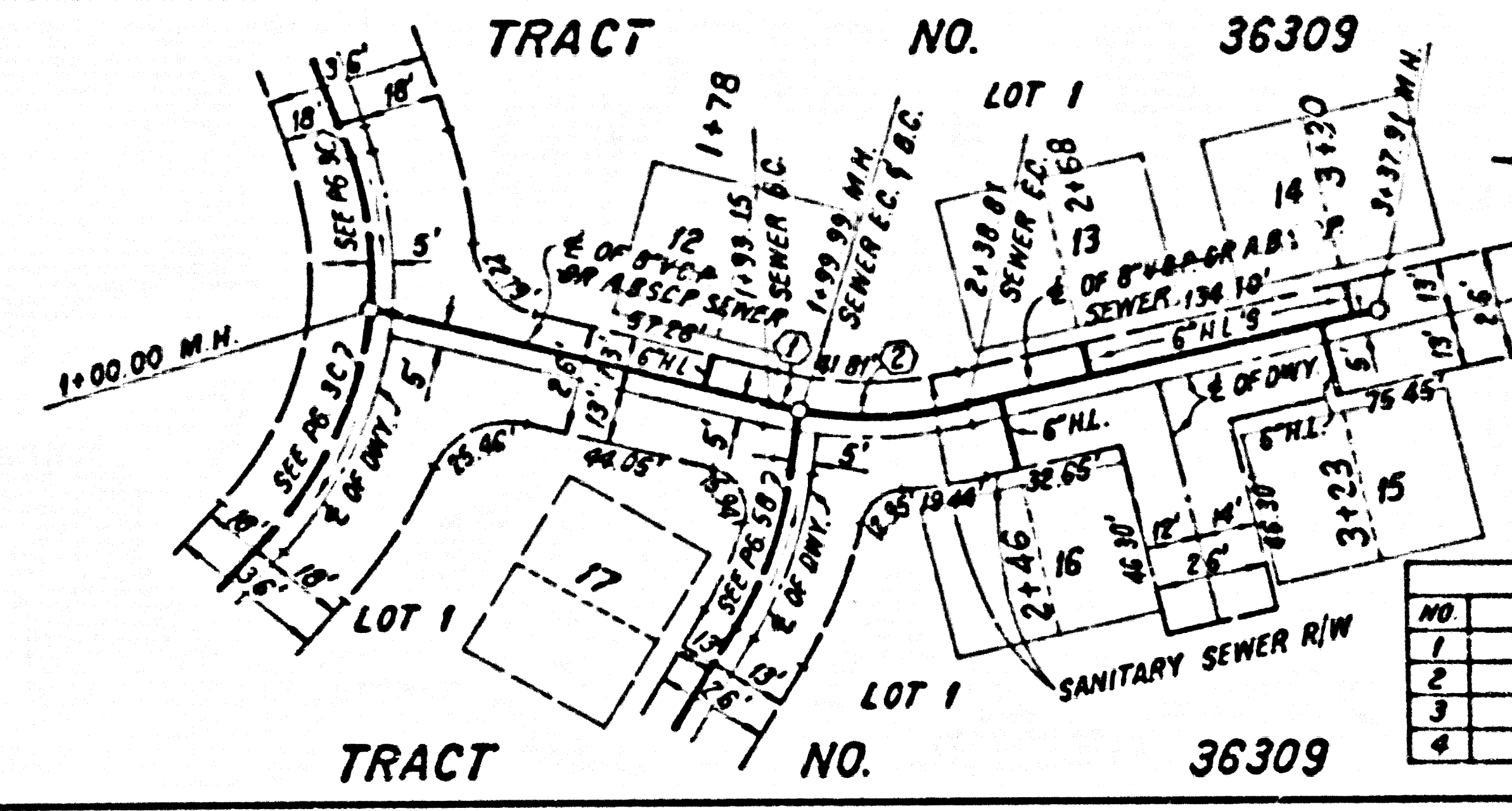
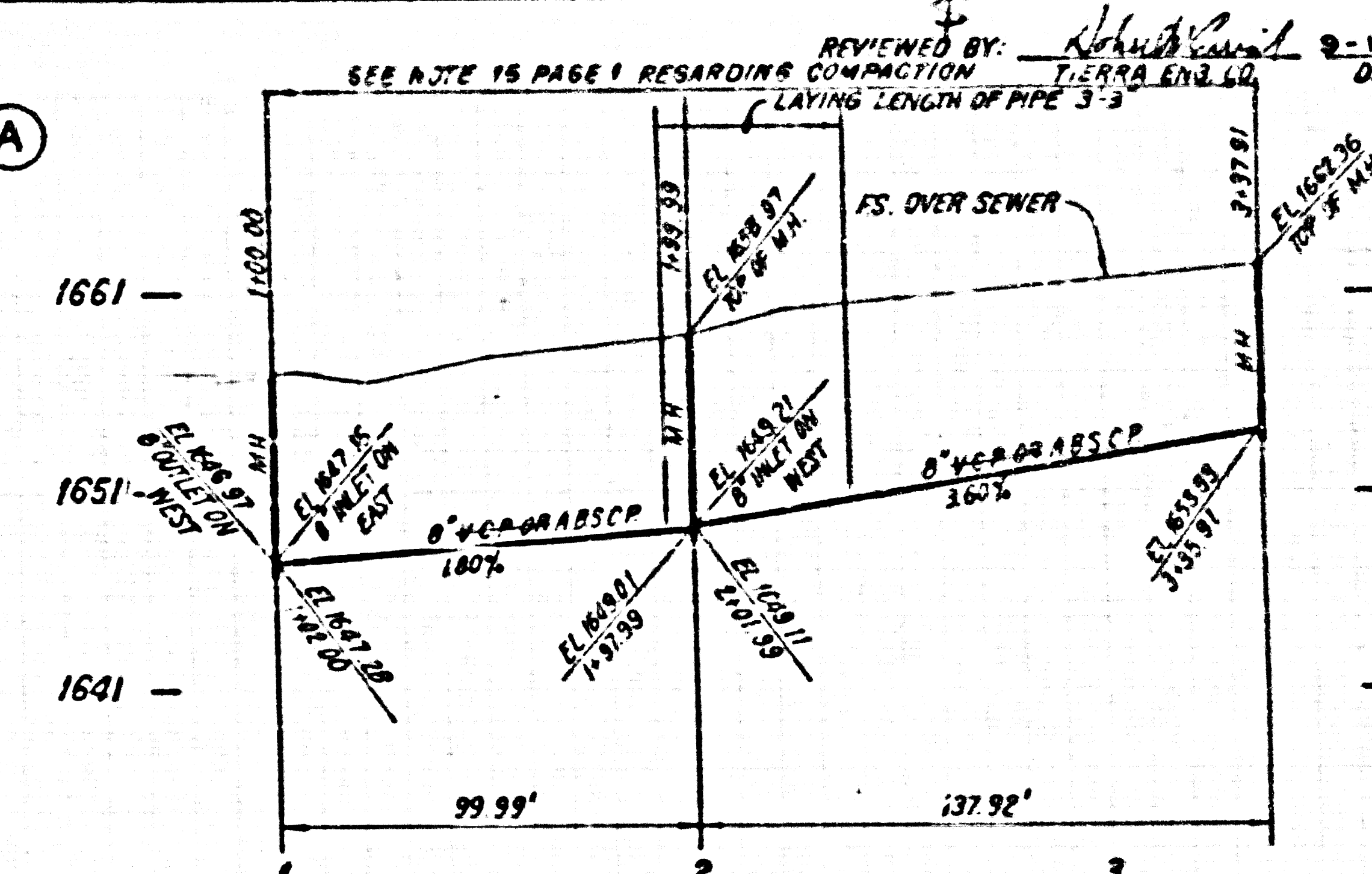
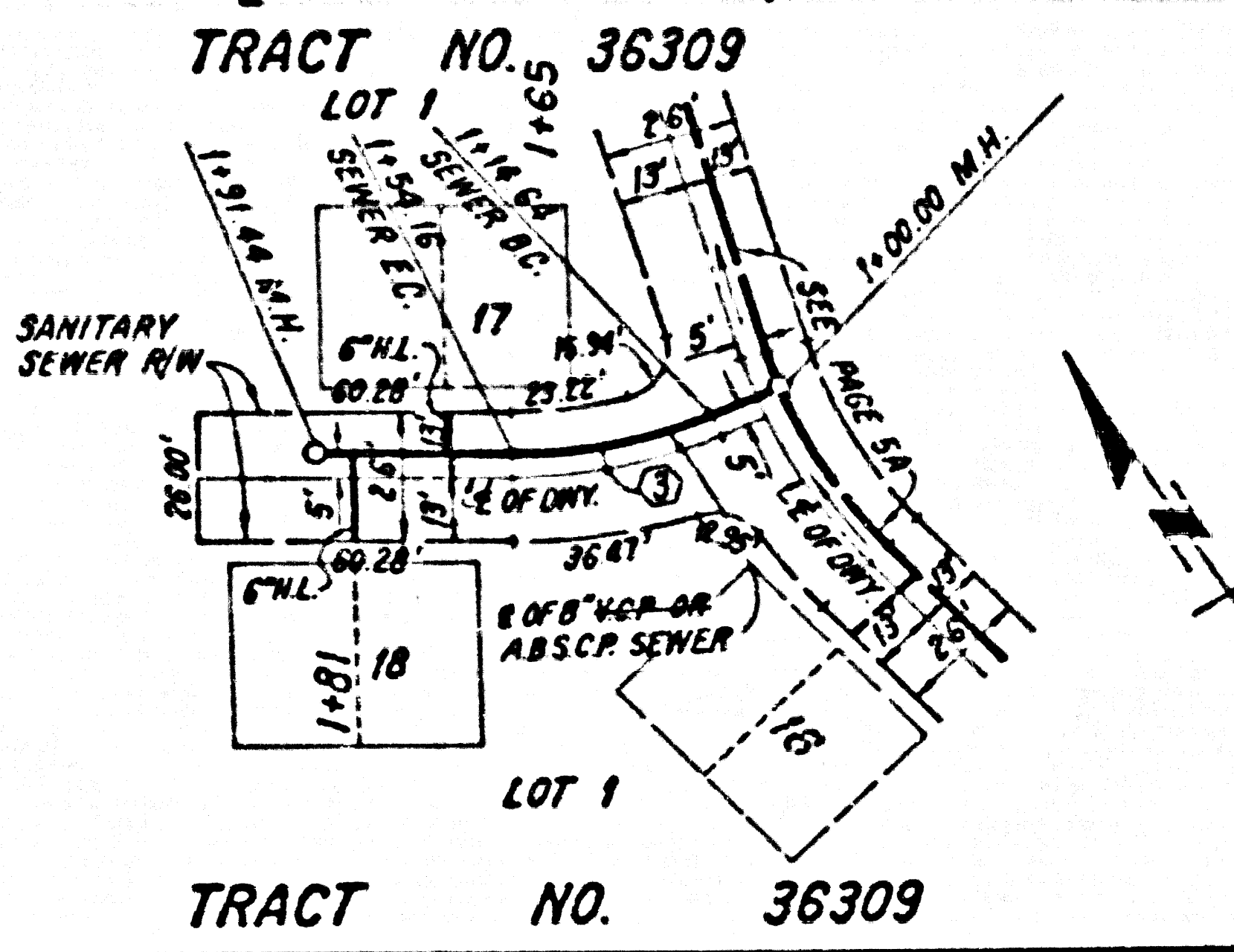
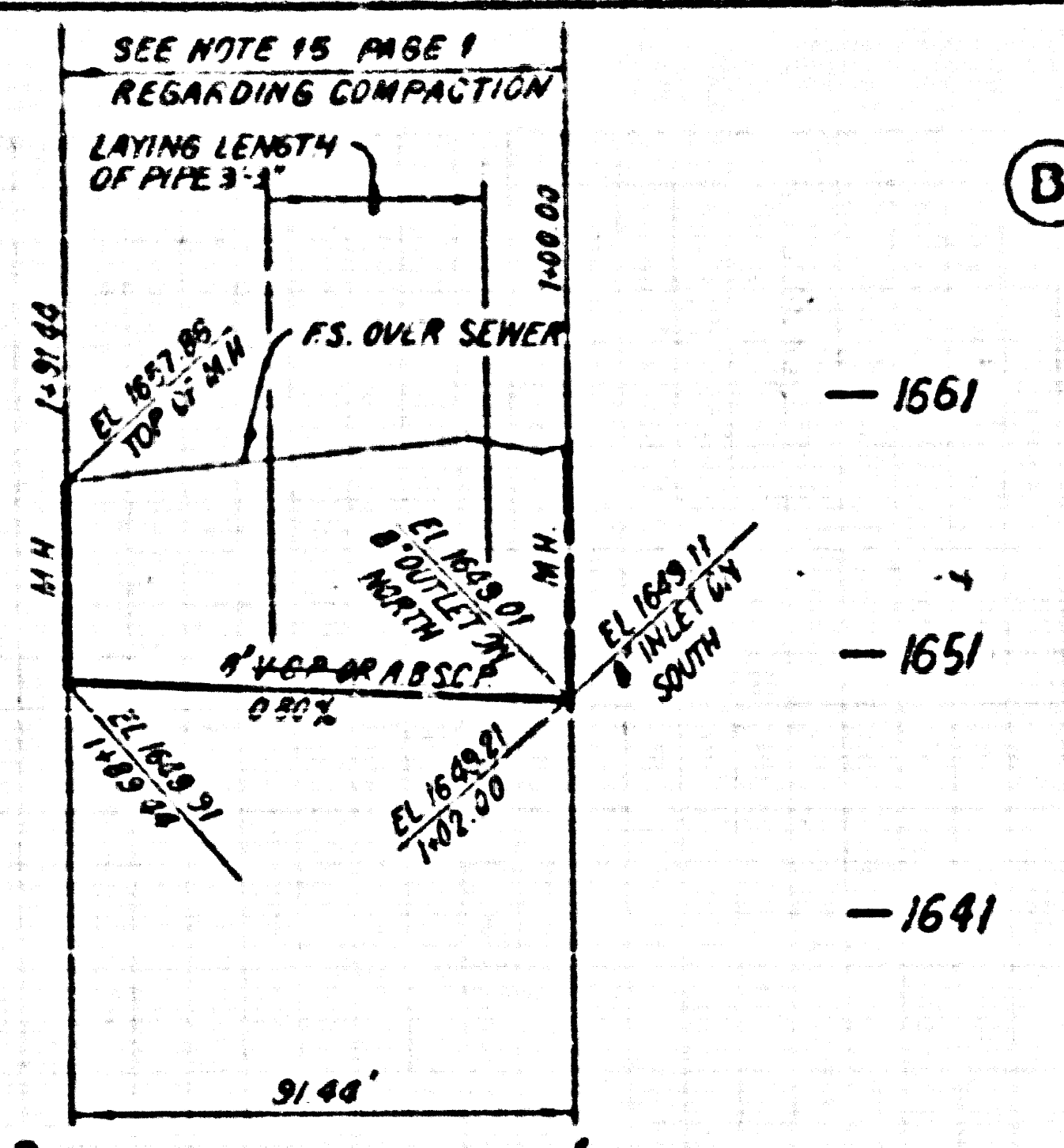
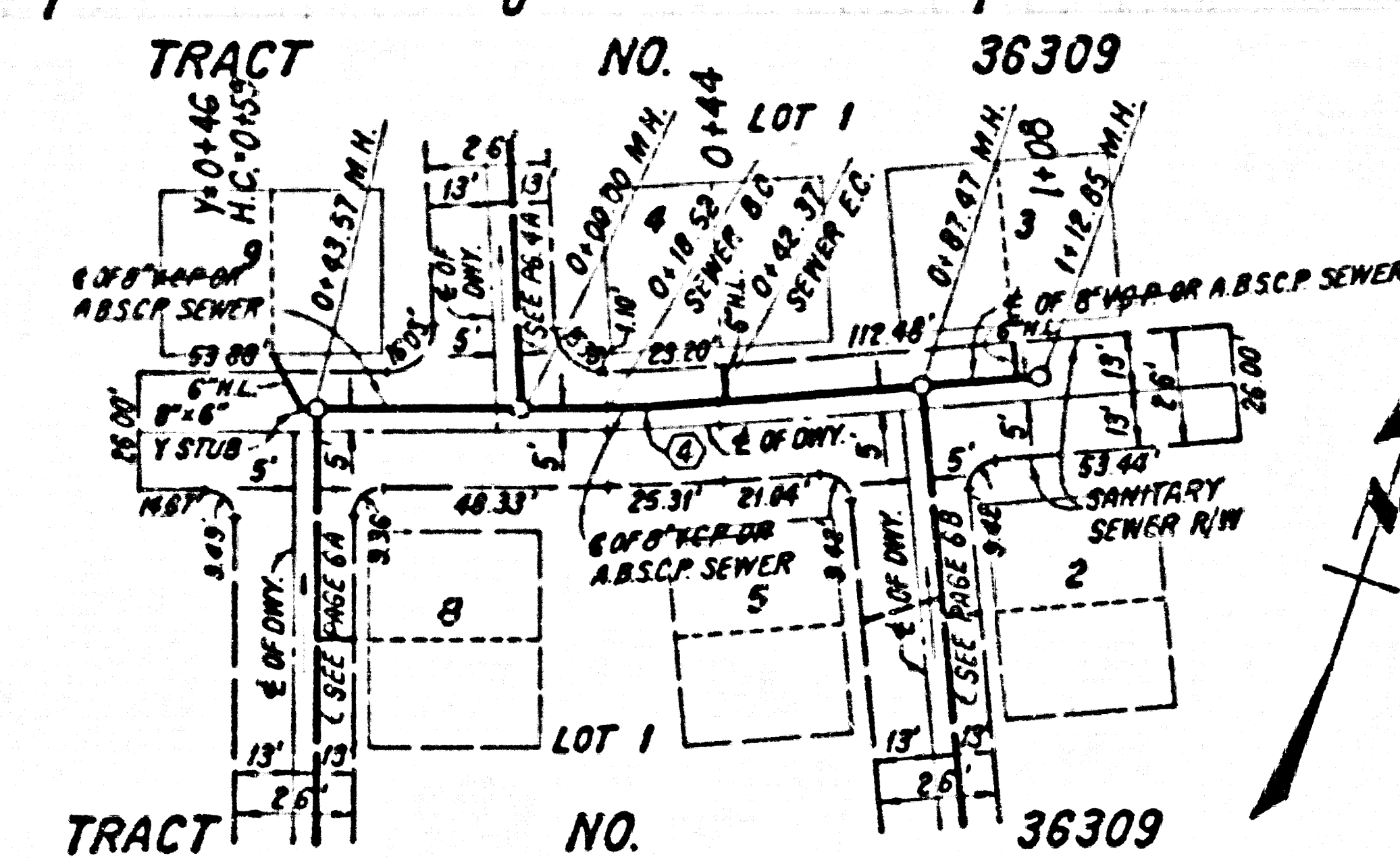
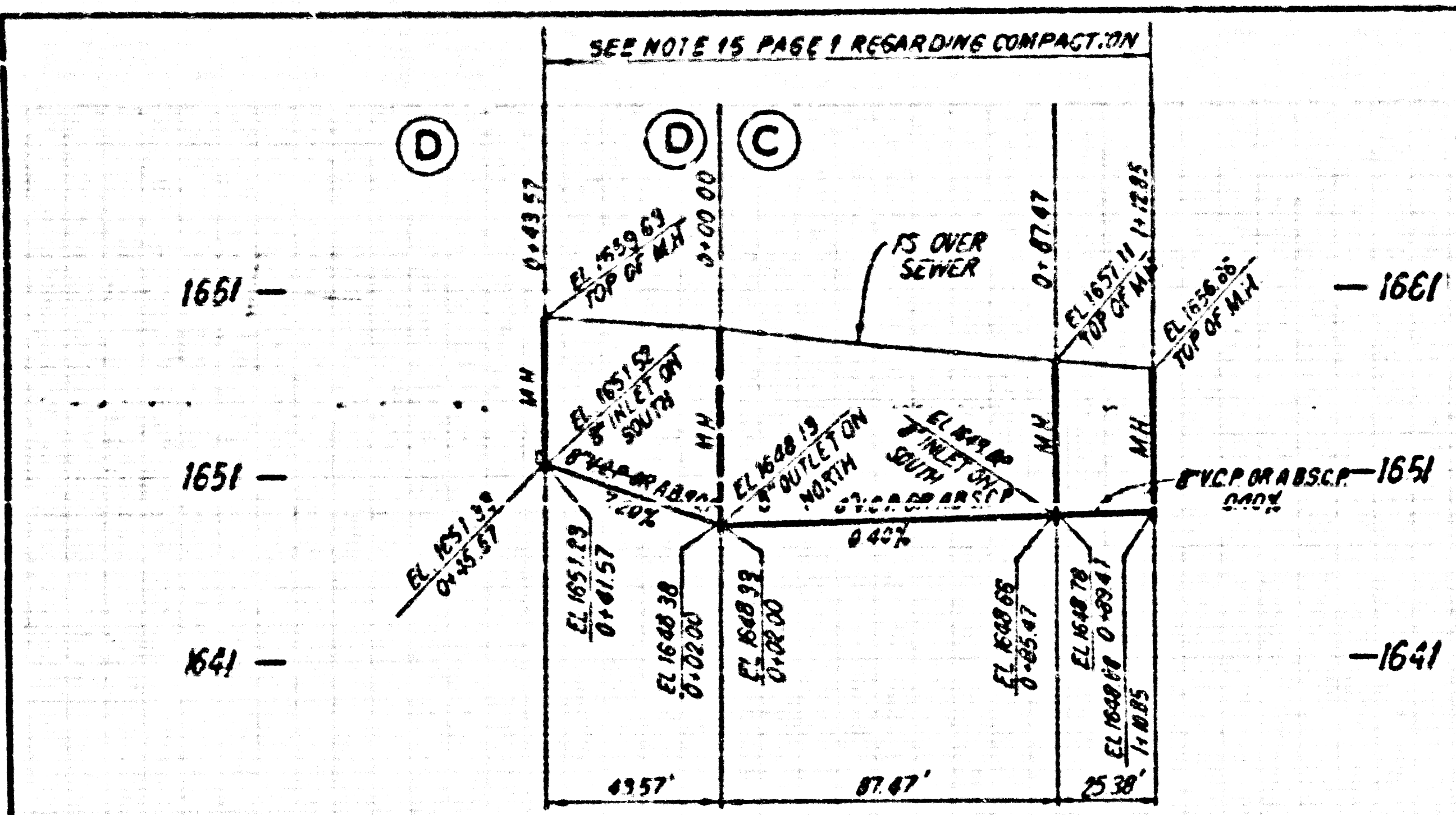
DOUBLE SCALE
NO L.A. CO. CHARGE
FOR CONNECTION
SEE SAN. DISTRICTS FOR
SPECIAL CONNECTION
CHARGES

52084

SEWER CURVE DATA

NO.	A	R	L	T
1	11° 08' 30"	105.00'	20.42'	10.24'
2	16° 23' 28"	95.00'	27.18'	13.63'

S 12701 29 0032E ON TRACT

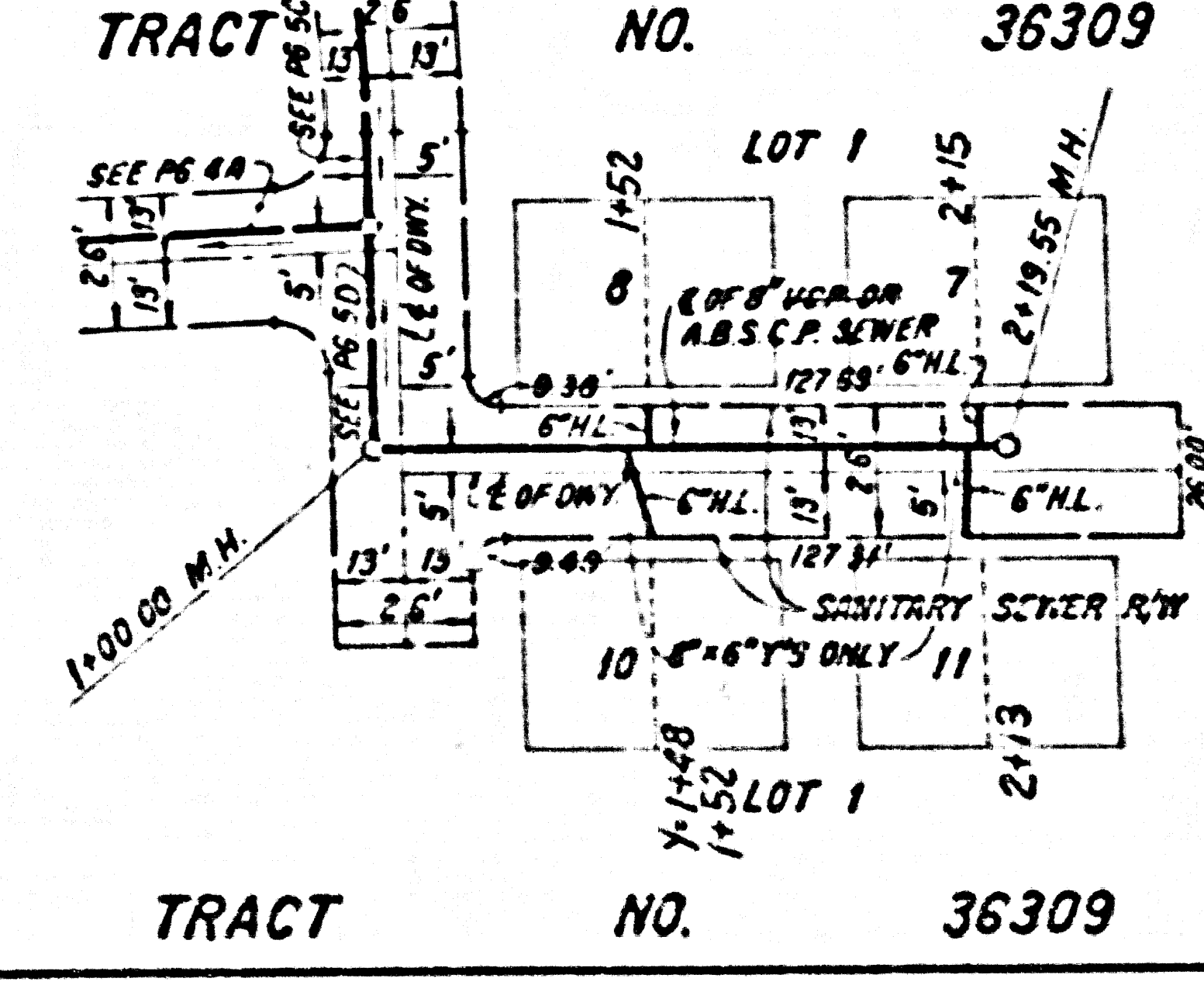
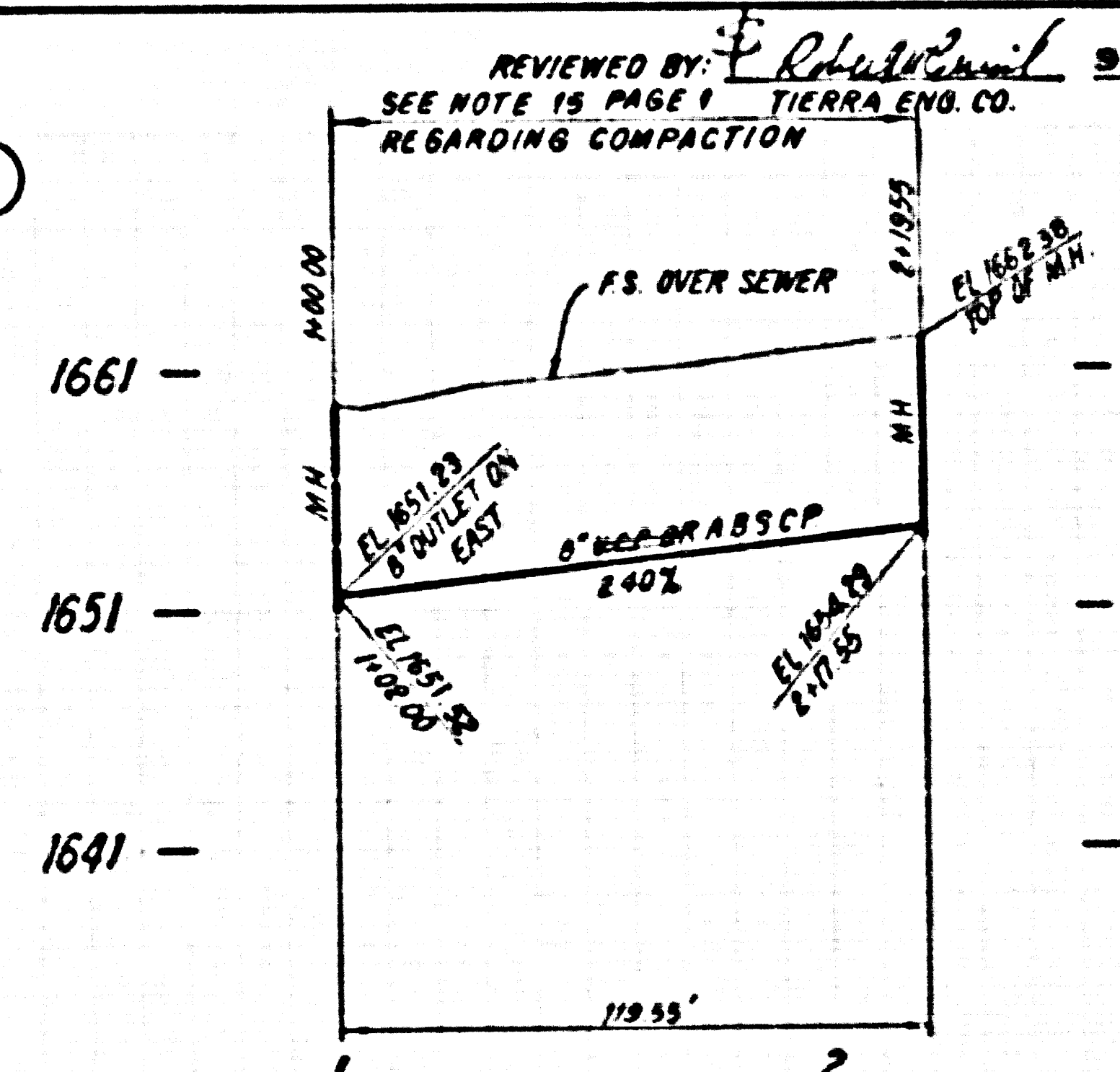
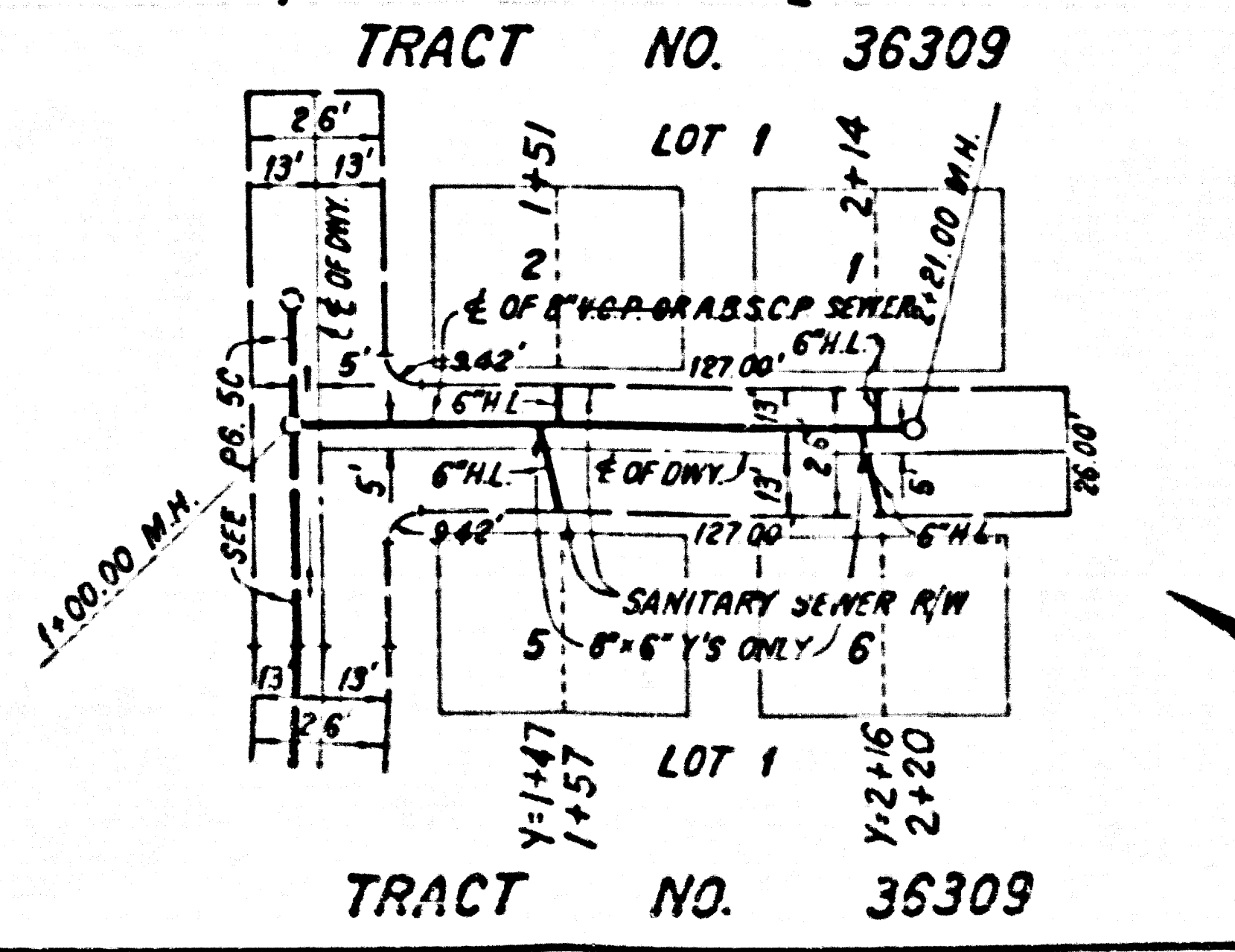
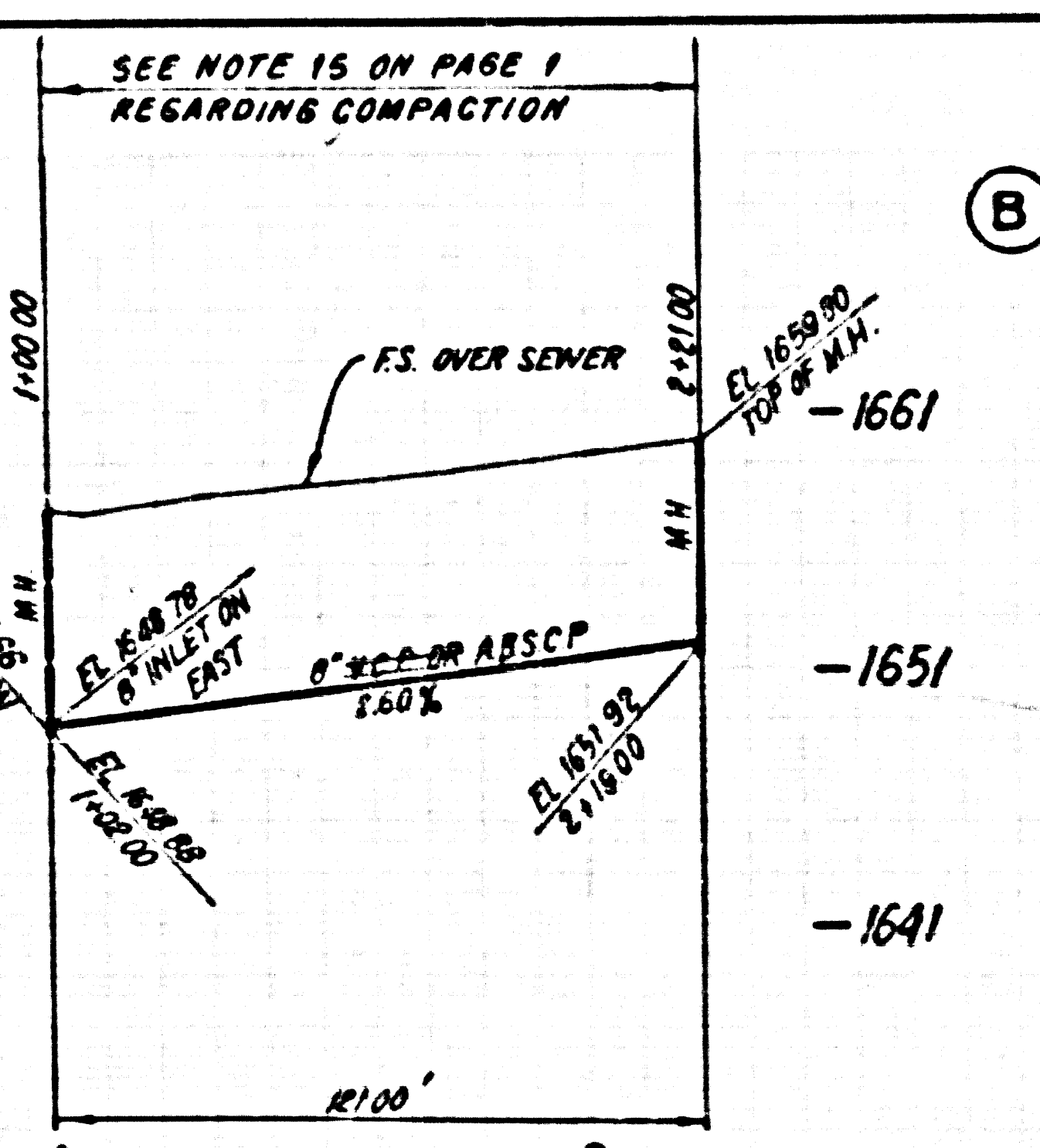


SEWER CURVE DATA

NO.	A	R	L	Y
1	4° 07' 25"	95.00'	6.84'	3.42'
2	2° 24' 49"	95.00'	38.82'	19.69'
3	2° 49' 59"	95.00'	39.52'	20.05'
4	4° 37' 57"	895.00'	28.85'	11.93'

DOUBLE SCALE
NO L.A. CO. CHARGE FOR CONNECTION
SEE SAN. DISTRICTS FOR SPECIAL CONNECTION CHARGES

52085



DOUBLE SCALE
NO L.A. CO. CHARGE FOR CONNECTION
SEE SAN. DISTRICTS FOR SPECIAL CONNECTION CHARGES

52086