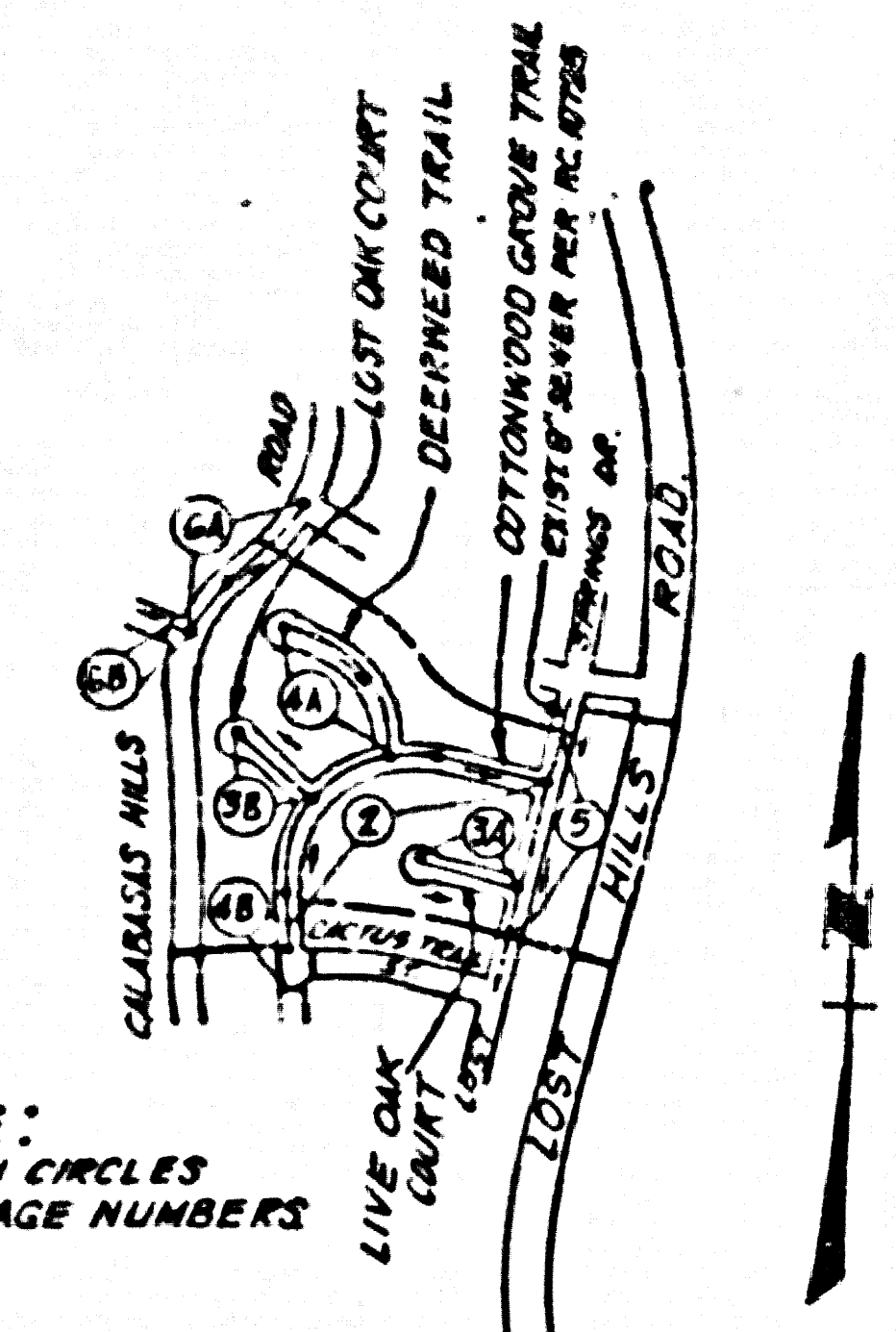


B.M. 55854 ELEV. 700.049
 C.S. N. MON. 210' IN. S. N. W. C. L. L. S.
 VIRGENES RD. 60' - N. L. S. ANTHONY E. WRIGHT
 SCHOOL TR. 5' P. P. N. W. 24' 59' 55" 115 FT
 N. D. DIRT RD. TO E. L. S. N. L. S. 24' 59' 55" 115 FT
 N. D. (B.M. 55853 - 1960)
 MALIBU QUAD. 1982



NOTE:
 NUMBERS IN CIRCLES
 INDICATE PAGE NUMBERS

INDEX MAP
 TRACT No. 45523
 PC No. 10755
 SCALE: 1" = 600'

No.	REVISION	REV. BY	APPROVED BY	DATE
1	DELTA 78 CHINNAIS ON PAGES 1 & 2	BY	BY	1/1/78

CONSTRUCTION NOTES (CONT.):

17. FULL COMPLIANCE WITH PART 7 OF THE SPECIAL PROVISIONS IS REQUIRED FOR THE INSTALLATION OF A 6" A.B.S. COMPOSITE PIPE.
18. MANHOLE WATER STOP BASKETS AND CLAMPS ARE REQUIRED FOR THE CONNECTION OF A 6" A.B.S. COMPOSITE PIPE TO MANHOLE STRUCTURES.
19. A.B.S. SOLID WALL PIPE MUST BE USED FOR WYE AND HOUSE LATERAL CONNECTIONS TO A 6" A.B.S. COMPOSITE MAINLINE SEWER PIPE.
20. A 6" A.B.S. COMPOSITE PIPE SHALL BE USED IN CONFORMANCE WITH THE IN SECTION B-3.1 OF PART IV OF THE SPECIAL PROVISIONS.
21. TURNER OR GREASE COLLECTION COUPLERS ARE REQUIRED FOR RADIUS OF CURVATURE LESS THAN 300 FEET WHEN USING 6" A.B.S. COMPOSITE PIPE.
22. NO CONNECTIONS FOR DISPOSAL OF INDUSTRIAL WASTE IS ALLOWED IN A 6" A.B.S. COMPOSITE PIPE IS USED.
23. SEWER LINE CURVATURE SHALL NOT BE ACHIEVED BY PULLING OF JOINTS OR BEVELING PIPE ENDS WHEN USING PLASTIC PIPE INCLUDING A 6" A.B.S. COMPOSITE PIPE.
24. ALL WYES AND/OR HOUSE LATERALS ARE TO BE LOCATED AT LEAST FIVE FEET FROM ANY HOUSE AND WHEN POSSIBLE NOT CLOSER THAN FIVE FEET TO ANY MANHOLE.
25. A.B.S. SOLID WALL PIPE IS NOT ACCEPTABLE FOR USE AS MAIN LINE SEWER.
26. ONLY WYE BRANCHES ARE TO BE USED FOR CONNECTION TO A.B.S. COMPOSITE MAINLINE SEWER PIPE.

ISSUE NO HOUSE CONNECTION PERMITS UNTIL OUTLET SEWER PC 10755 IS ACCEPTED FOR PUBLIC USE BY THE COUNTY OF LOS ANGELES

GENERAL NOTES:

1. ELEVATIONS ARE IN FEET ABOVE U.S.C. & G.S. MEAN 1929 DATUM OF 1929.
2. NO REVISIONS SHALL BE MADE IN THESE PLANS WITHOUT THE APPROVAL OF THE DIRECTOR OF PUBLIC WORKS.
3. NO REPRESENTATIVE OF THE DEPT. OF PUBLIC WORKS SHALL SURVEY OR LAY OUT ANY PORTION OF THE WORK.
4. LOCATIONS TO WHICH THIS IMPROVEMENT IS TO BE CONSTRUCTED ARE SHOWN ON PLANS AND PROFILES DRAWN POINTS FOR TOP OF CURBS, CENTER LINE OF STREETS OR CENTER LINE OF ALLEYS ARE SHOWN BY CIRCLES ON PROFILES AT ALL POINTS BETWEEN UNMARKED POINTS THE GRADE SHALL BE ESTABLISHED AS TO CENTERING TO A STRAIGHT LINE DRAWN BETWEEN SAID UNMARKED POINTS.
5. THE PRIVATE ENGINEER SHALL FURNISH THE NECESSARY BENCH MARK DATA AND STATIONING FOR ALL HOUSE LATERALS AND "C" OR "D" BRANCHES AND SHALL PROVIDE STAKE FOR THEM AT THE PROPER LOCATION WITH STATIONING PLAINS MARKED ALL HOUSE LATERALS SHALL BE CONSTRUCTED TO A 7/32" DIA. 1/4" DIA. ALIGNMENT AT RIGHT ANGLES FROM THE MAIN LINE SEWER EXCEPT AS SHOWN ON THE PLANS HOUSE LATERALS FROM CHIMNEYS SHALL NOT HAVE AN ANGLE OF LESS THAN 60° WITH THE MAIN LINE SEWER ANY CHANGE IN ALIGNMENT SHALL BE REQUESTED IN WRITING BY THE PRIVATE ENGINEER.
6. THE PRIVATE ENGINEER SHALL FURNISH THE HOUSE LATERAL DEPTH AT THE PROPERTY LINE BELOW THE TOP OF CURB ELEVATION FOR EACH HOUSE LATERAL ON THE GRADE SHEET.
7. BEFORE WORK CAN BE STARTED THE CONTRACTOR SHALL OBTAIN A PERMIT TO EXCAVATE IN COUNTY STREETS FROM THE COUNTY ENGINEER AND THE COUNTY ENGINEER SHALL FURNISH THE NECESSARY PERMITS AND STAKE FOR THEM AT THE PROPER LOCATION WITH STATIONING PLAINS MARKED ALL HOUSE LATERALS SHALL BE CONSTRUCTED TO A 7/32" DIA. 1/4" DIA. ALIGNMENT AT RIGHT ANGLES FROM THE MAIN LINE SEWER EXCEPT AS SHOWN ON THE PLANS HOUSE LATERALS FROM CHIMNEYS SHALL NOT HAVE AN ANGLE OF LESS THAN 60° WITH THE MAIN LINE SEWER ANY CHANGE IN ALIGNMENT SHALL BE REQUESTED IN WRITING BY THE PRIVATE ENGINEER.
8. APPROVAL OF THIS PLAN BY THE COUNTY OF LOS ANGELES DOES NOT CONSTITUTE A REPRESENTATION AS TO THE ACCURACY OF THE LOCATION OR THE EXISTENCE OR NON-EXISTENCE OF ANY UNDERGROUND UTILITY PIPE OR STRUCTURE WITHIN THE LIMITS OF THE PROJECT. THIS NOTE APPLIES TO ALL PAGES.
9. REFER TO SECTION 114.1 OF THE STANDARD SPECIFICATIONS REGARDING SAFETY ORTHS.
10. PRIOR TO THE RESUMPTION OF THE REQUIRED SEWER CONSTRUCTION PERMIT THE CONTRACTOR SHALL OBTAIN AND FILE WITH THE COUNTY ENGINEER COPIES OF A PERMIT TO EXCAVATE IN COUNTY STREETS FROM THE COUNTY ENGINEER AND THE COUNTY ENGINEER SHALL FURNISH THE NECESSARY PERMITS AND STAKE FOR THEM AT THE PROPER LOCATION WITH STATIONING PLAINS MARKED ALL HOUSE LATERALS SHALL BE CONSTRUCTED TO A 7/32" DIA. 1/4" DIA. ALIGNMENT AT RIGHT ANGLES FROM THE MAIN LINE SEWER EXCEPT AS SHOWN ON THE PLANS HOUSE LATERALS FROM CHIMNEYS SHALL NOT HAVE AN ANGLE OF LESS THAN 60° WITH THE MAIN LINE SEWER ANY CHANGE IN ALIGNMENT SHALL BE REQUESTED IN WRITING BY THE PRIVATE ENGINEER.

CONSTRUCTION NOTES:

1. WORK SHALL BE CONSTRUCTED ACCORDING TO THE STANDARD SPECIFICATIONS FOR PUBLIC WORKS CONSTRUCTION (1988 EDITION) WITH THE EXCEPTIONS AND SPECIAL PROVISIONS FOR THE CONSTRUCTION OF SANITARY SEWERS DATED 12/21/76.
2. THE CONTRACTOR SHALL NOTIFY THE COUNTY ENGINEER DIVISION BY TELEPHONE 301-3189 AT LEAST TWENTY-FOUR HOURS BEFORE STARTING ANY WORK UNDER THIS CONTRACT.
3. HOUSE LATERALS TO BE CONSTRUCTED WITHIN PROPERTY LINE 6 FEET BELOW CURB GRADE EXCEPT AS NOTED.
4. WYE OR TEE BRANCHES MAY BE USED FOR CONNECTIONS TO MAIN LINE SEWERS EXCEPT AS NOTED.
5. ALL STRUCTURES SHALL BE EITHER BRICK MANHOLES PER S.3 OR PRECAST CONCRETE MANHOLES PER S.36 EXCEPT AS NOTED.
6. PROVIDE STAGES ON THE PROPERTY LINE OR PROPERTY LINES PRODUCED AT RIGHT ANGLES TO THE SEWER LINE AT THE CENTER LINE OF EACH MANHOLE.
7. MANHOLE TOPS IN UNIMPROVED RIGHTS OF WAY TO BE SIX INCHES ABOVE FINISHED GRADE.
8. VITRIFIED CLAY PIPE JOINTS SHALL BE TYPE "D" OR "E" PER STANDARD SPECIFICATIONS SECTION 200-7.
9. IF A POWER POLE IS WITHIN THREE FEET OF THE SEWER THE SEWER SHALL BE ENCASED PER S.23 CASE R TWO FEET ON EACH SIDE FROM THE POINT OF INTERFERENCE.
10. DURING THE COURSE OF CONSTRUCTION IT IS DEEMED THAT THERE IS LESS THAN FOUR FEET OF COVER OVER THE TOP OF A MAIN LINE OR HOUSE LATERAL SEWER WHICH IS NOT INDICATED ON THE PLANS THE PIPE SHALL BE ENCASED PER S.23 CASE R UNLESS OTHERWISE APPROVED BY THE DEPARTMENT OF PUBLIC WORKS.
11. ALL JOINTS BETWEEN CAST IRON PIPE AND VITRIFIED CLAY PIPE SHALL BE MADE WITH A RUBBER SLEEVE JOINT TYPE "C" OR "D" WITH FLASHING AS NECESSARY PER STANDARD SPECIFICATIONS SECTION 200-7.
12. SEWERS TO BE TESTED FOR LEAKAGE PER SECTION 301.14 OF THE STANDARD SPECIFICATIONS AND SPECIAL PROVISIONS.
13. REPLACE ALL TRENCHES WITHIN PAVED AREAS TO MEET L.A. COUNTY ROAD DEPT. OR CALIFORNIA STATE HIGHWAY REQUIREMENTS IN ACCORDANCE WITH PERMITS.
14. FULL COMPLIANCE WITH SECTION 301.13 OF THE STANDARD SPECIFICATIONS WILL BE REQUIRED FOR BACKFILL IN STREETS. CERTIFICATION OF BACKFILL COMPACTION AND SAND EQUIVALENTS BY A QUALIFIED REGISTERED TESTING LABORATORY SHALL BE PROVIDED BY THE CONTRACTOR TO THE RESUME OF A CERTIFICATE OF PARTIAL ACCEPTANCE.
15. SPECIAL BACKFILL IN BASEMENT CONSTRUCTION (A) BACKFILL TRENCH AND REPLACE OTHER EARTH SO AS TO ACHIEVE THE NATURAL OR FINISHED GRADES AND SLOPES SHOWN ON THE GRADING PLAN APPROVED FOR THE DEVELOPMENT BY THE LAND DEVELOPMENT DIVISION (B) ALL BACKFILL AND EARTH REPLACED SHALL BE COMPACTED TO A MINIMUM OF 80% OR MAXIMUM OF 90% PER A.S. 110. METHOD OF TEST (C) TEST (D) AS MODIFIED ACCEPTABLE CERTIFICATION OF SUCH COMPACTION SHALL BE SUBMITTED TO THE COUNTY ENGINEER DIVISION, PUBLIC WORKS DEPARTMENT.
16. THE COUNTY IS NOT RESPONSIBLE FOR THE ACCURACY OF ANY SUBSTRUCTURES EXCEPT ON THE PLANS.

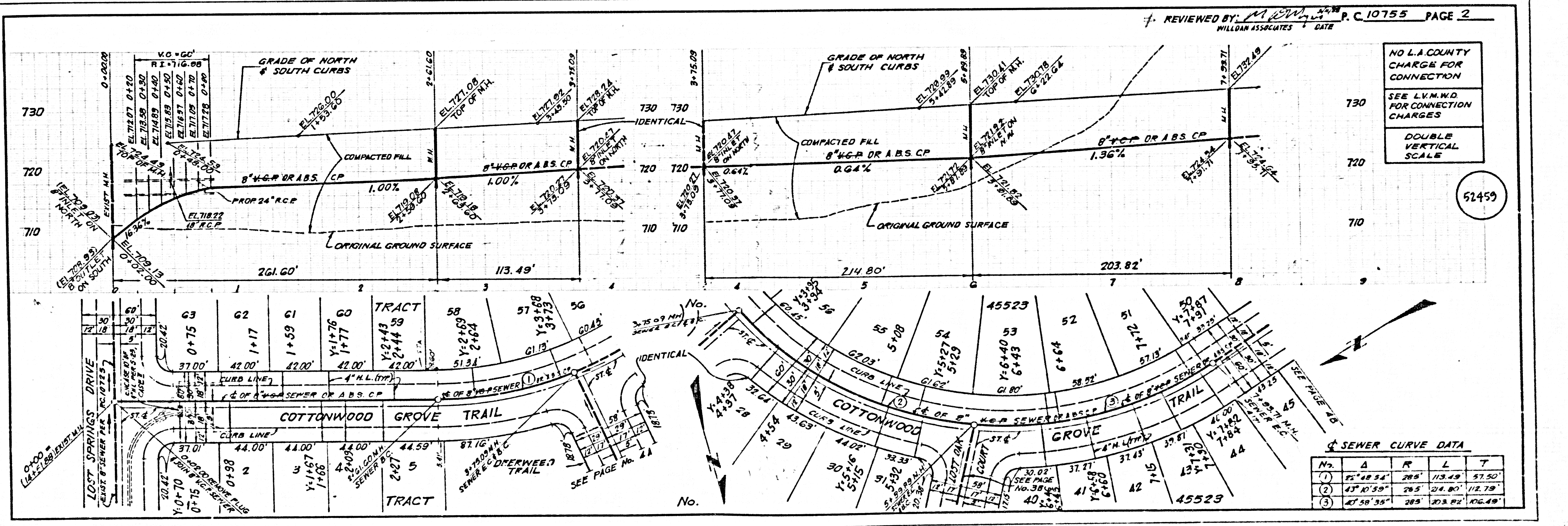
TRACT NO. 45523
 PRIVATE CONTRACT NO. 10755
 INDEX C-231
 3 SHEETS, 6 PAGES

SCALE: VERT. 1" = 6' HORIZ. 1" = 40'
 FEBRUARY, 1988
 PREPARED IN THE OFFICES OF
 B & E ENGINEERS
 825 COLORADO BLVD., SUITE 222, LOS ANGELES, CA 90044
 BY: James T. Emerson
 REG. C.E. No. 10931

THE FOLLOWING LATEST REVISED STANDARD PLANS ON FILE IN THE OFFICE OF THE COUNTY ENGINEER SHALL APPLY IN THE CONSTRUCTION OF THIS PROJECT:

LEAKING	5-1
MANHOLE PUBLIC SAFETY EQUIPMENTS	5-2
BRICK MANHOLE	5-3
STANDARD MANHOLE STOP	5-19
WOODING FOR STEPS	5-20
CRANKING AND DISCHARGING	5-21
WYE ON THE SUPPORT	5-22
ALLOWABLE TRENCH WIDTHS	5-23
LOCKING MANHOLE FRAME AND COVER	5-24
NON-REINFORCED PRECAST CONCRETE MANHOLE	5-25

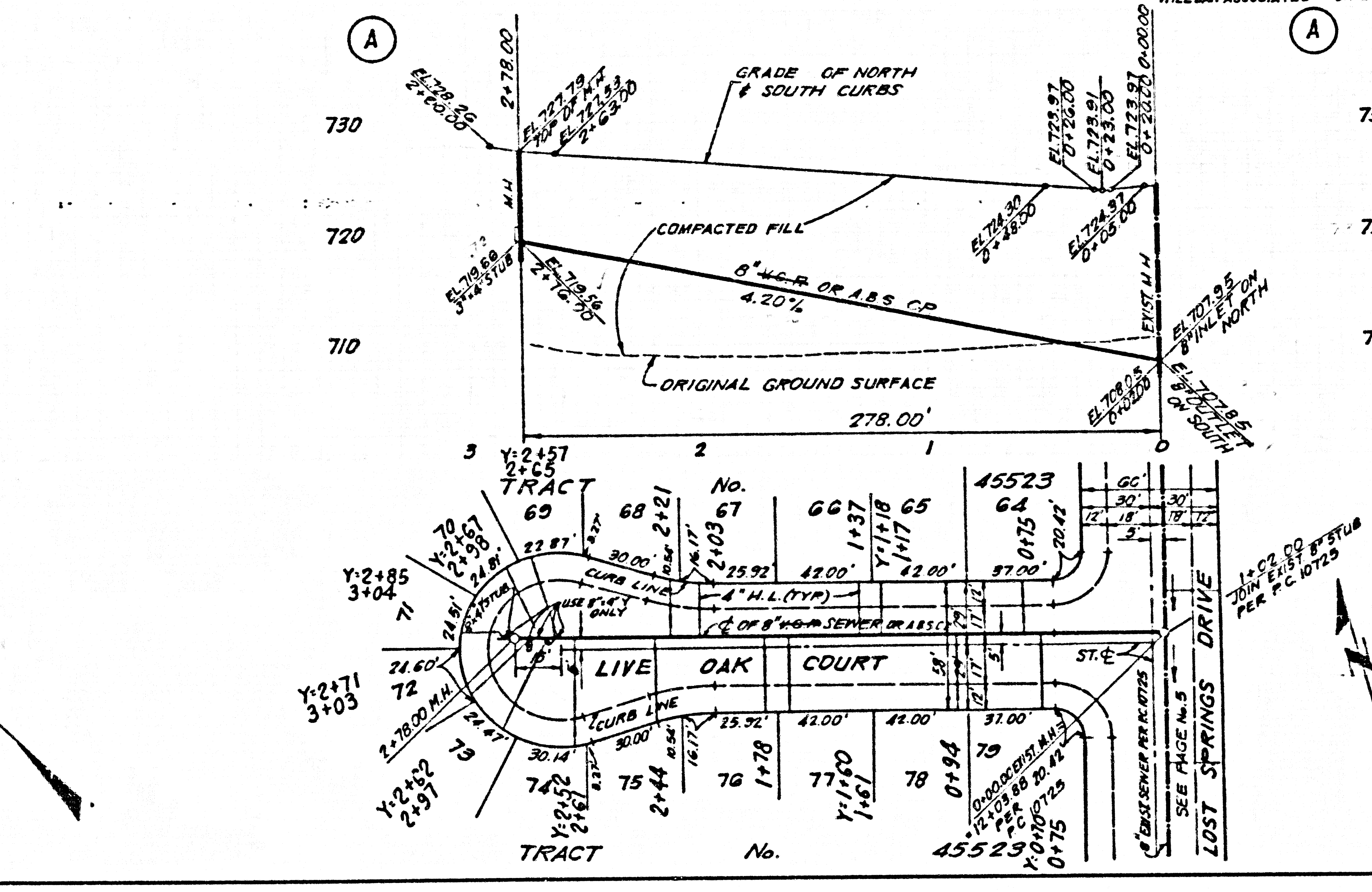
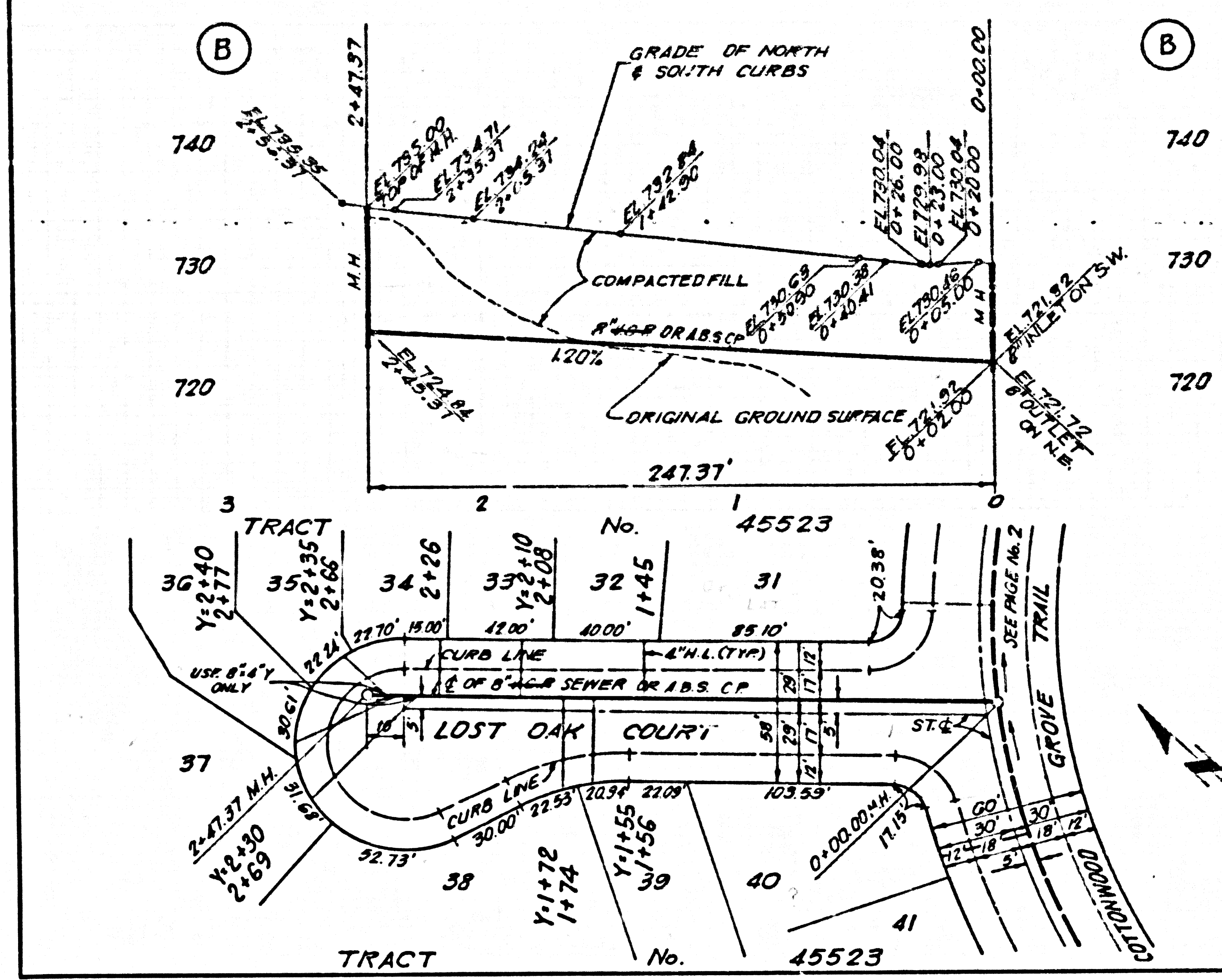
COUNTY OF LOS ANGELES, CALIFORNIA
 THOMAS A. IDENASON, DIRECTOR OF PUBLIC WORKS
 M. W. STOKES - CHIEF ENGINEER
 LAS VIRGENES MUNICIPAL WATER DISTRICT
 APPROVED: Dean J. Johnson 5/18/88
 APPROVED: J. W. Stokes 5-25-88
 REVIEWED: M. W. Stokes 5/11/88
 WILLIAMS ASSOCIATES
 BLDG. DIST. 9.1



SEWER CURVE DATA

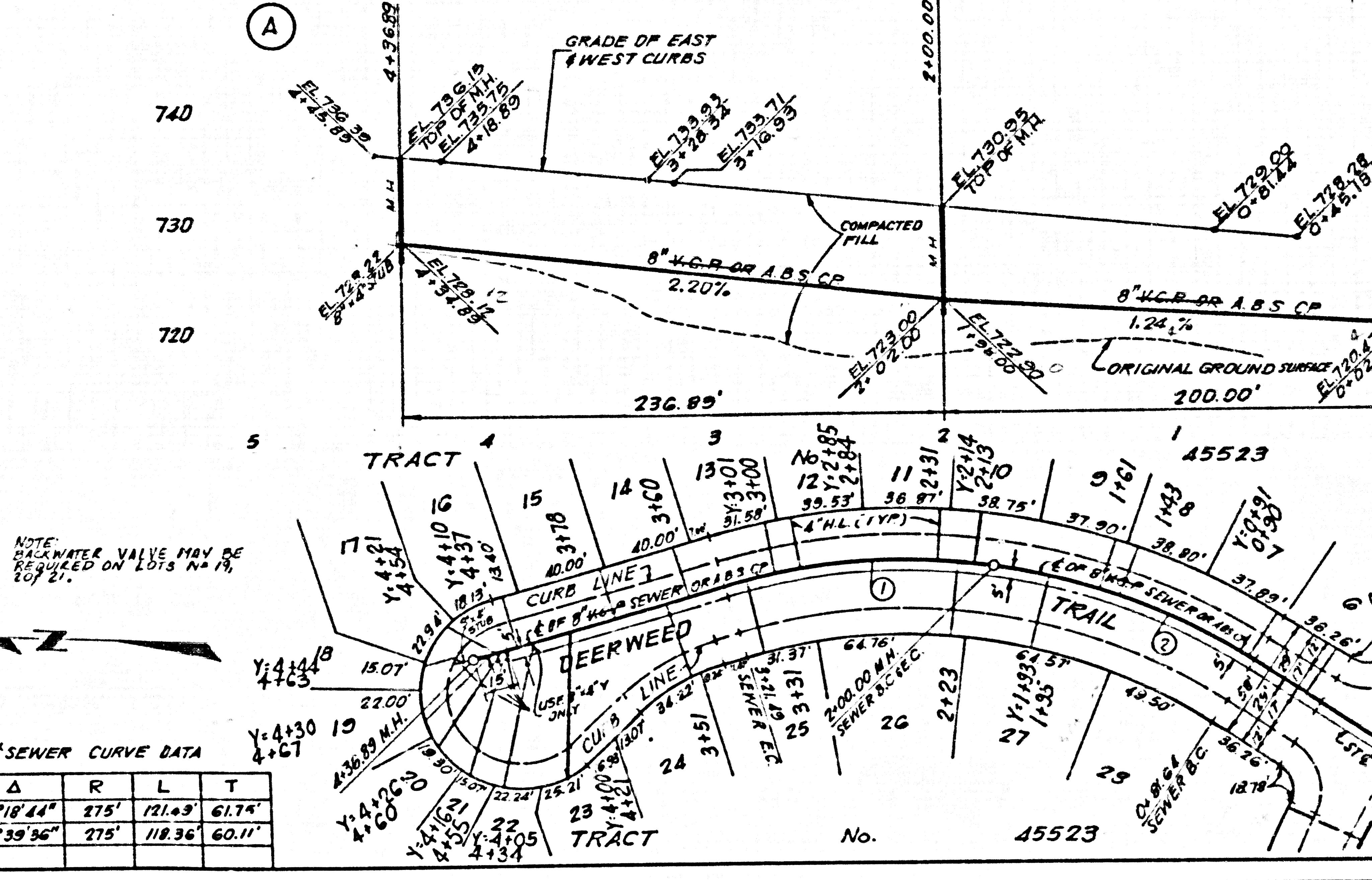
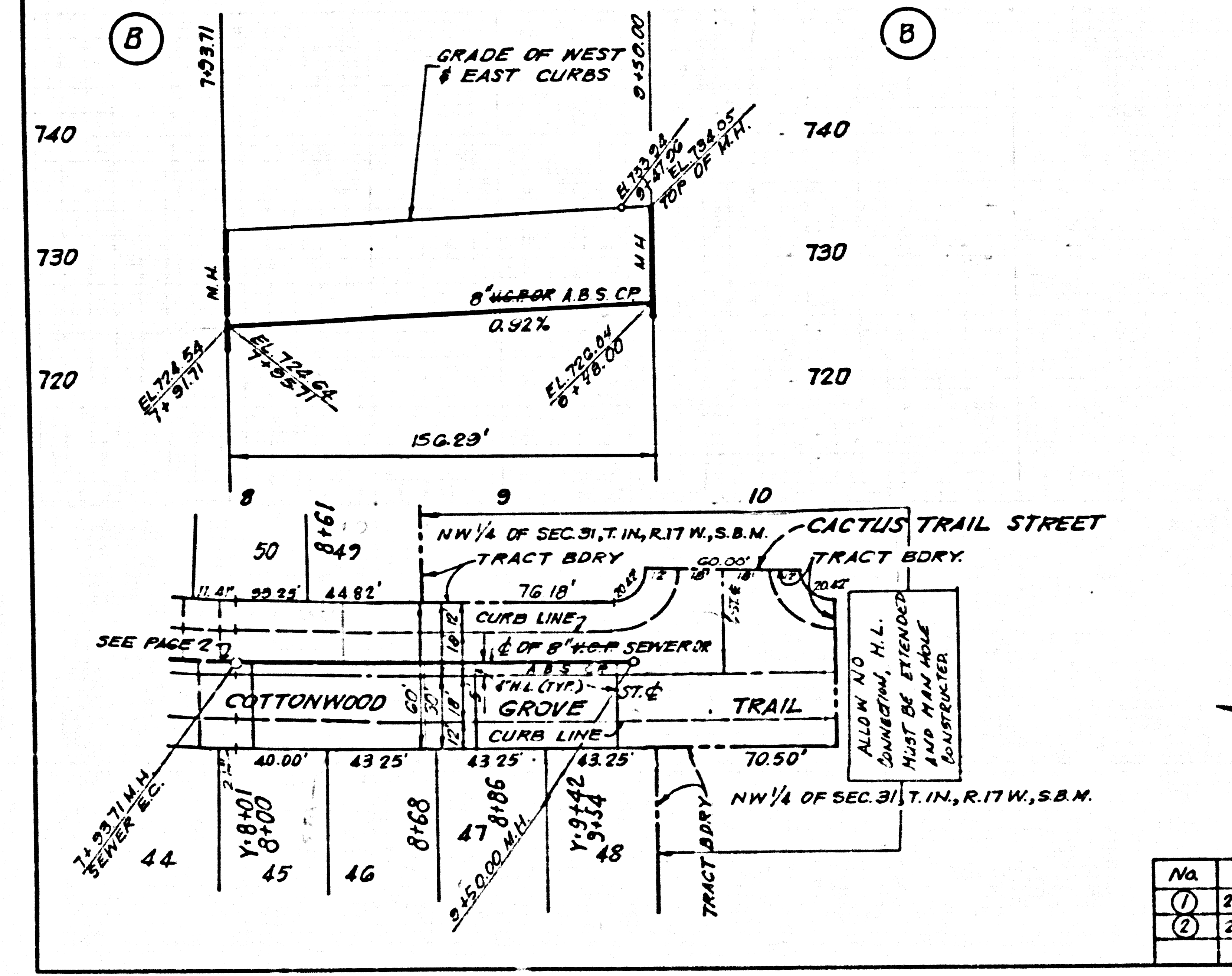
No.	Δ	R	L	T
(1)	85° 48' 54"	285'	113.49'	57.50'
(2)	43° 10' 59"	285'	24.80'	112.79'
(3)	40° 58' 35"	285'	203.82'	106.49'

22101 29
 53224 ON T-CART



NO L.A. COUNTY CHARGE FOR CONNECTION
 SEE L.V.M.W.D. FOR CONNECTION CHARGES
 DOUBLE VERTICAL SCALE

52460



NO L.A. COUNTY CHARGE FOR CONNECTION
 SEE L.V.M.W.D. FOR CONNECTION CHARGES
 DOUBLE VERTICAL SCALE

52461

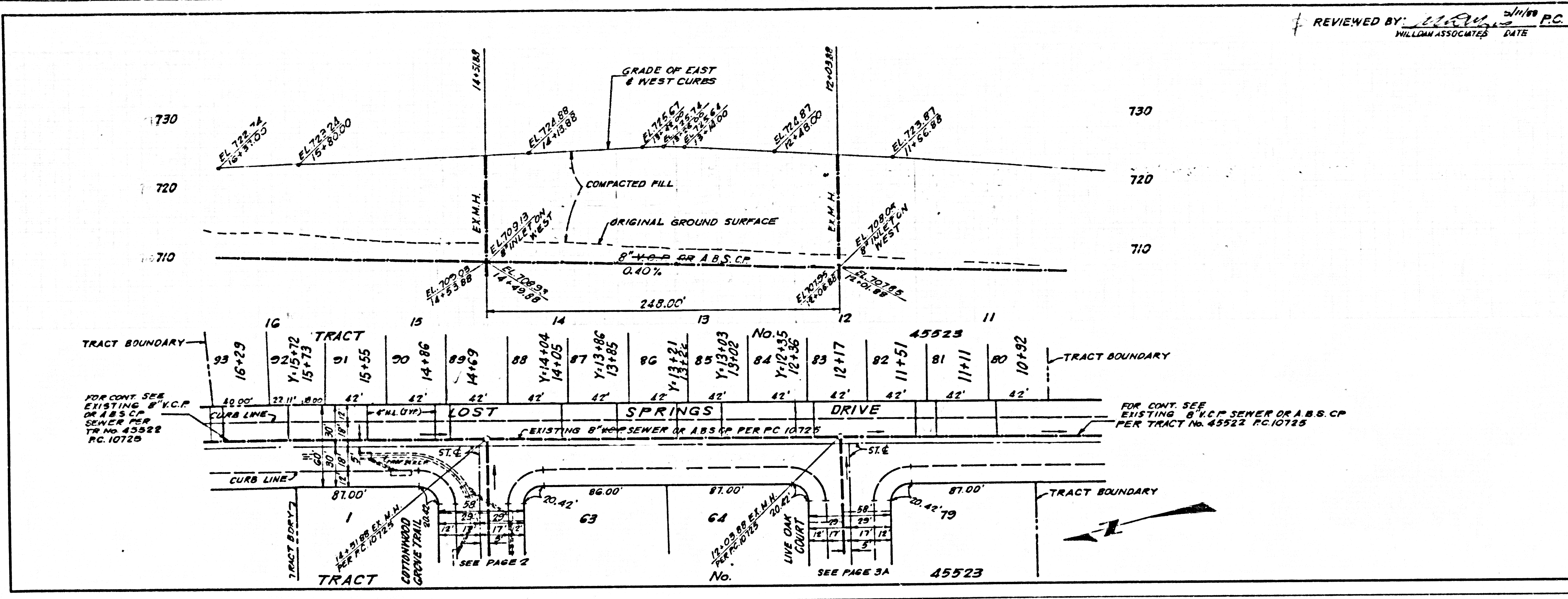
SEWER CURVE DATA

No.	Δ	R	L	T
①	23°18'44"	275'	121.03'	61.74'
②	24°39'36"	275'	118.36'	60.11'

PC 10755
 ON TRACT

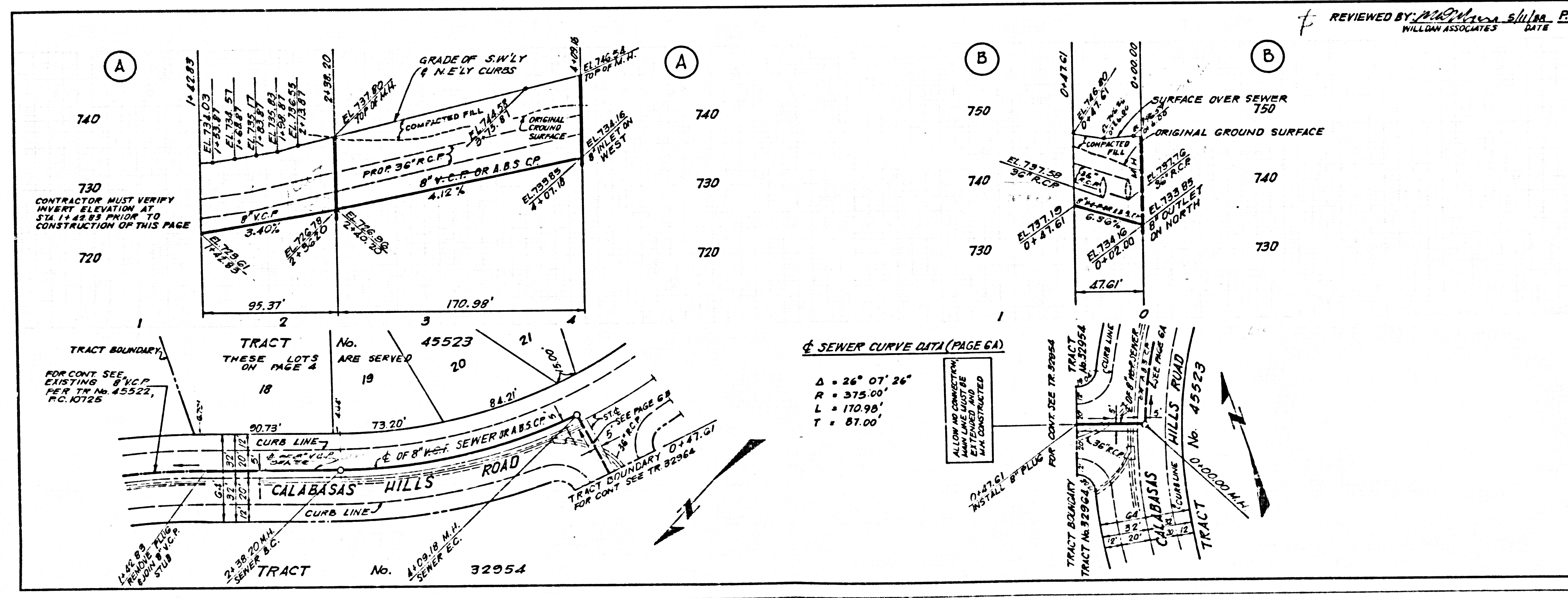
NO L.A. COUNTY CHARGES FOR CONNECTION
SEE L.V.M.W.D. FOR CONNECTION CHARGES
DOUBLE VERTICAL SCALE

52462



NO L.A. COUNTY CHARGES FOR CONNECTION
SEE L.V.M.W.D. FOR CONNECTION CHARGES
DOUBLE VERTICAL SCALE

52463



25T0109 ES224 ON T-CART