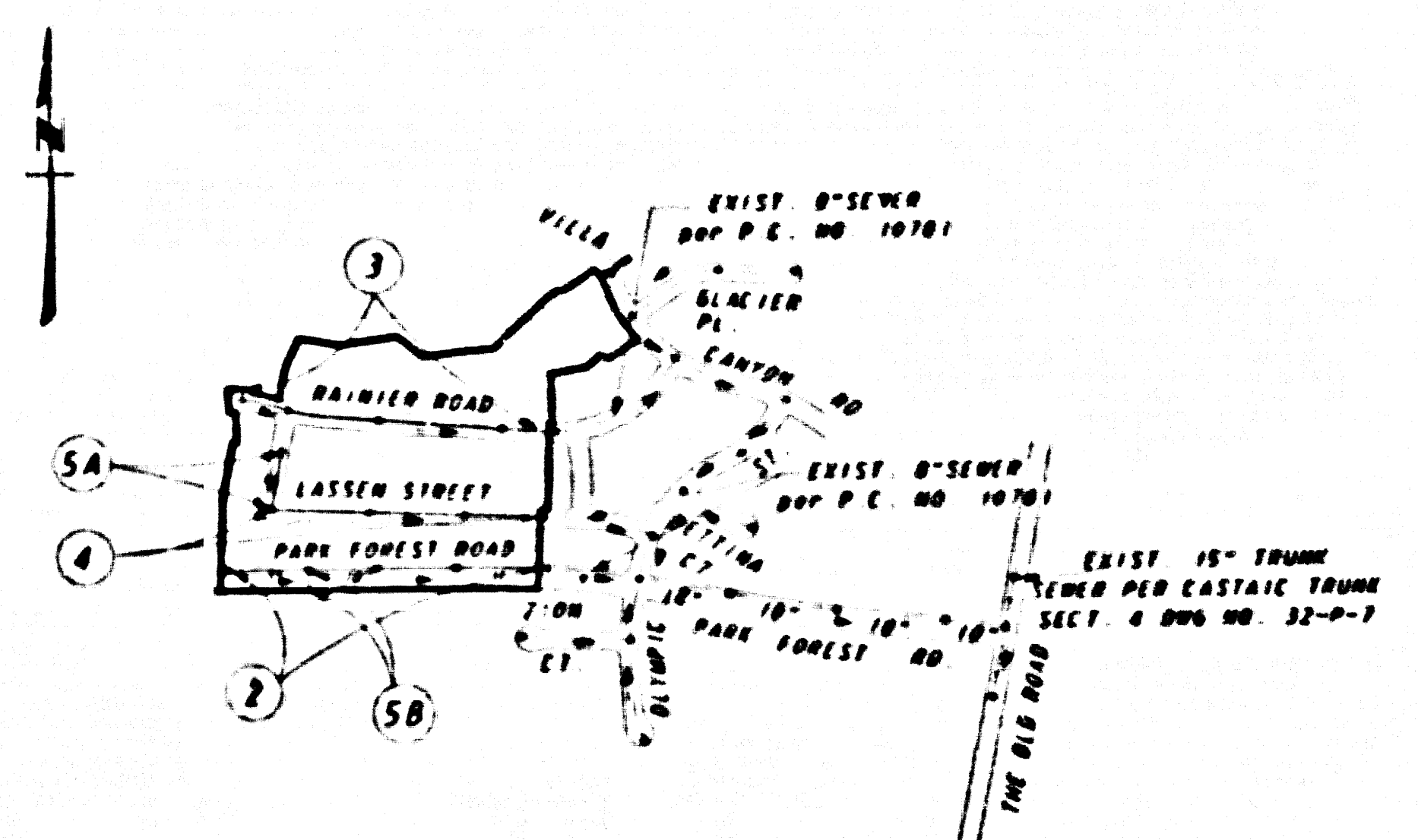


BENCH MARK: **CL 3983**
 BORN TAG IN CB 14 FT E CL THE OLD ROAD
 8 1.4 MI NLY HASLEY CN RD OFF-RAMP
 134 FT SE PP 8 1071271 E
NEWHALL 1983 ELEV. 1092.425

NOTE:
 NUMBERS IN CIRCLES
 INDICATE PAGE NUMBERS



INDEX MAP
 TRACT NO. 45334
 P.C. NO. 10785
 S.E. 1/4 400'
 T.8 N. R.12 E. S.2

- CONSTRUCTION NOTES: (CONT.)**
- 11 ALL JOINTS BETWEEN CAST IRON PIPE AND VITRIFIED CLAY PIPE SHALL BE MADE WITH A RUBBER SLEEVE JOINT, TYPE "C" OR "D", WITH BUSHING IF NECESSARY PER STANDARD SPECIFICATIONS SECTION 208-2.
 - 12 SEWERS TO BE TESTED FOR LEAKAGE PER SECTION 208 1-4 OF THE STANDARD SPECIFICATIONS AND SPECIAL PROVISIONS.
 - 13 RESURFACE ALL TRENCHES WITHIN PAVED AREAS TO MEET L.A. COUNTY PUBLIC WORKS OR CALIFORNIA STATE HIGHWAY REQUIREMENTS IN ACCORDANCE WITH PERMITS.
 - 14 FULL COMPLIANCE WITH SECTION 208-1-9 OF THE STANDARD SPECIFICATIONS WILL BE REQUIRED FOR BACKFILL IN STREETS. CERTIFICATION OF BACKFILL COMPACTION AND SAND EQUIVALENTS BY A QUALIFIED REGISTERED TESTING LABORATORY SHALL BE PROVIDED BY THE PERMITTEE PRIOR TO THE ISSUANCE OF A CERTIFICATE OF PARTIAL ACCEPTANCE.
 - 15 SPECIAL BACKFILL REQUIREMENT CONSTRUCTION: (A) BACKFILL THUMP AND REPLACE OTHER EARTH SO AS TO ACHIEVE THE NATURAL OR FINISHED GRADE AND SLOPES SHOWN ON THE GRADING PLAN APPROVED FOR THIS DEVELOPMENT BY THE LAND DEVELOPMENT DIVISION. (B) ALL BACKFILL AND REPLACE SHALL BE COMPACTED TO A MINIMUM OF 90% OF MAXIMUM DENSITY FOR A 5" T. 610 METHOD OF TEST 0008 967 AS MODIFIED. ACCEPTABLE CERTIFICATION OF SUCH COMPACTION SHALL BE SUBMITTED TO THE CONSTRUCTION DIVISION PUBLIC WORKS DEPARTMENT.
 - 16 VYE BRANCHES ONLY MAY BE USED FOR CONNECTIONS TO MAIN LINE SEWER IF A B S C P IS USED.
 - 17 ALL JOINTS BETWEEN CAST IRON PIPE AND A B S C P SHALL BE MADE WITH APPROVED FITTINGS.
 - 18 FULL COMPLIANCE WITH PART IV. OF THE SPECIAL PROVISIONS IS REQUIRED FOR THE INSTALLATION OF A B S COMPOSITE PIPE AND A B S SOLID WALL HOUSE LATERALS.
 - 19 MANHOLE WATER STOP GASKETS AND CLAMPS ARE REQUIRED FOR THE CONNECTION OF A B S COMPOSITE PIPE TO MANHOLE STRUCTURES.
 - 20 A B S SOLID WALL PIPE MUST BE USED FOR VYE AND HOUSE LATERAL CONNECTIONS TO A B S COMPOSITE MAINLINE SEWER.
 - 21 THREE DEGREE DEFLECTION COUPLERS SHOULD BE USED TO ACCOMPLISH RADIUS OF CURVATURE LESS THAN 300' FOR B A B S COMPOSITE PIPE.
 - 22 A B S COMPOSITE PIPE SHALL BE GROVED IN CONFORMANCE WITH THE TABLE IN SECTION 208-1 OF PART IV. OF SPECIAL PROVISIONS.
 - 23 NO CONNECTIONS FOR DISPOSAL OF INDUSTRIAL WASTE IS ALLOWED IF A B S COMPOSITE PIPE IS USED.
 - 24 SEWER LINE CURVATURE SHALL NOT BE ACHIEVED BY PULLING OF JOINTS OR BEVELING PIPE ENDS WHEN USING PLASTIC PIPE INCLUDING A B S COMPOSITE PIPE.
 - 25 ALL VYE AND/OR HOUSE LATERALS ARE TO BE LOCATED AT LEAST FIVE FEET APART AND WHEN POSSIBLE NOT CLOSER THAN FIVE FEET TO ANY MANHOLE.
 - 26 A B S SOLID WALL PIPE IS NOT ACCEPTABLE FOR USE AS MAINLINE SEWER.
 - 28 A CONNECTION FOR THE DISPOSAL OF INDUSTRIAL WASTES SHALL BE MADE TO SEWER SHOWN ON THESE DRAWINGS UNTIL A PERMIT FOR INDUSTRIAL WASTEWATER DISCHARGE HAS BEEN ISSUED BY THE SANITATION DISTRICTS FOR SAID CONNECTION.

ISSUE NO HOUSE CONNECTION PERMITS UNTIL OUTLET SEWER P.C. NO. 10781 IS ACCEPTED FOR PUBLIC USE BY THE COUNTY OF LOS ANGELES.

APPROVAL OF THIS PLAN BY THE LAND DEVELOPMENT DIVISION IS BASED ON A REVIEW BY AN ENGINEERING CONSULTANT UNDER CONTRACT WITH THE COUNTY OF LOS ANGELES.

- GENERAL NOTES:**
- 1 ELEVATIONS ARE IN FEET ABOVE U.S.C. & G.S. SEA LEVEL DATUM OF 1929.
 - 2 NO REVISIONS SHALL BE MADE IN THESE PLANS WITHOUT THE APPROVAL OF THE DIRECTOR OF PUBLIC WORKS.
 - 3 NO REPRESENTATIVE OF THE DEPARTMENT OF PUBLIC WORKS WILL SURVEY OR LAY OUT ANY PORTION OF THE WORK.
 - 4 GRADES TO WHICH THIS IMPROVEMENT IS TO BE CONSTRUCTED ARE SHOWN ON PLANS AND PROFILES. GRADE POINTS FOR TOP OF CURB, CENTER LINE OF STREETS, OR CENTER LINE OF ALLEYS ARE SHOWN BY CIRCLES ON PROFILES. AT ALL POINTS BETWEEN DESIGNATED POINTS THE GRADE SHALL BE ESTABLISHED SO AS TO CONFORM TO A STRAIGHT LINE DRAWN BETWEEN SAID DESIGNATED POINTS.
 - 5 THE PRIVATE ENGINEER SHALL FURNISH THE DEPARTMENT OF PUBLIC WORKS WITH GRADE SHEETS AND STATIONING FOR ALL HOUSE LATERALS AND "Y" OR "T" BRANCHES AND SHALL PROVIDE STAKES FOR THEM AT THEIR PROPER LOCATIONS WITH STATIONING PLAINLY MARKED. ALL HOUSE LATERALS SHALL BE CONSTRUCTED IN A STRAIGHT ALIGNMENT AT RIGHT ANGLES FROM THE MAIN LINE SEWER EXCEPT AS SHOWN ON THE PLANS. HOUSE LATERALS FROM CHIMNEYS SHALL NOT HAVE AN ANGLE OF LESS THAN 45 DEGREES WITH THE MAIN LINE SEWER. ANY CHANGE IN ALIGNMENT SHALL BE REQUESTED IN WRITING BY THE PRIVATE ENGINEER.
 - 6 THE PRIVATE ENGINEER SHALL FURNISH THE HOUSE LATERAL DEPTH AT THE PROPERTY LINE BELOW THE TOP OF THE CURB ELEVATION FOR EACH HOUSE LATERAL ON THE GRADE SHEET.
 - 7 BEFORE WORK CAN BE STARTED, THE CONTRACTOR MUST OBTAIN A PERMIT TO EXCAVATE IN COUNTY STREETS FROM THE CONSTRUCTION DIVISION OF THE L.A. COUNTY DEPARTMENT OF PUBLIC WORKS PERMIT OFFICE NO. 8, AND PAY A FEE TO THE DIRECTOR OF PUBLIC WORKS, 800 SOUTH FASHION AVENUE ALHAMBRA, CA 91803, 8TH FLOOR TO COVER THE COST OF CONSTRUCTION INSPECTION AND RECORD PLANS.
 - 8 IF WORK IS TO BE DONE IN STATE HIGHWAY, A PERMIT MUST BE OBTAINED FROM THE STATE OF CALIFORNIA, DIVISION OF HIGHWAYS, 120 SOUTH SPRING STREET, LOS ANGELES, CALIFORNIA.
 - 9 APPROVAL OF THIS PLAN BY THE COUNTY OF LOS ANGELES DOES NOT CONSTITUTE A REPRESENTATION AS TO THE ACCURACY OF THE LOCATION OF OR THE EXISTENCE OR NON-EXISTENCE OF ANY UNDERGROUND UTILITY PIPE, OR STRUCTURE WITHIN THE LIMITS OF THIS PROJECT. THIS NOTE APPLIES TO ALL PAGES.
 - 10 REFER TO SECTION 7-10-4.1 OF THE STANDARD SPECIFICATIONS REGARDING SAFETY ORDERS.
 - 11 PRIOR TO THE ISSUANCE OF THE REQUIRED SEWER CONSTRUCTION PERMIT, THE CONTRACTOR SHALL OBTAIN AND FILE WITH THE DEPARTMENT OF PUBLIC WORKS COPIES OF A PERMIT TO EXCAVATE IN COUNTY STREETS FROM THE COUNTY DIVISION OF THE DEPARTMENT OF PUBLIC WORKS. A PERMIT FOR EXCAVATIONS AND TRENCHES FROM THE STATE OF CALIFORNIA, DIVISION OF INDUSTRIAL SAFETY AND A CERTIFICATE OF WORKER'S COMPENSATION INSURANCE WITH THE DEPARTMENT OF PUBLIC WORKS, 800 SOUTH FRENCH AVENUE, ALHAMBRA CALIFORNIA 91803, 8TH FLOOR, NAMED AS THE CERTIFICATE HOLDER TO BE NOTIFIED 30 DAYS PRIOR TO CANCELLATION OF POLICY.

- CONSTRUCTION NOTES:**
- 1 WORK SHALL BE CONSTRUCTED ACCORDING TO THE STANDARD SPECIFICATIONS FOR PUBLIC WORKS CONSTRUCTION (1988 EDITION) & DEPARTMENT OF PUBLIC WORKS SPECIAL PROVISIONS FOR THE CONSTRUCTION OF SANITARY SEWERS DATED SEPT. 21, 1978 AND SHALL BE PROSECUTED ONLY IN THE PRESENCE OF THE DEPARTMENT OF PUBLIC WORKS.
 - 2 THE CONTRACTOR SHALL NOTIFY THE CONSTRUCTION DIVISION BY TELEPHONE (818)458-3129 AT LEAST TWENTY-FOUR HOURS BEFORE STARTING ANY WORK UNDER THIS CONTRACT.
 - 3 HOUSE LATERALS TO BE CONSTRUCTED WITH INVERTS AT PROPERTY LINE 8 FEET BELOW CURB GRADE EXCEPT AS NOTED.
 - 4 VYE OR TEE BRANCHES MAY BE USED FOR CONNECTIONS TO MAINLINE SEWERS EXCEPT AS NOTED.
 - 5 ALL STRUCTURES SHALL BE EITHER BRICK SEWER MANHOLES PER S 3 OR PRE-CAST CONCRETE MANHOLES PER S 10, EXCEPT AS NOTED.
 - 6 PROVIDE STAKES ON THE PROPERTY LINE OR PROPERTY LINES PRODUCED AT RIGHT ANGLES TO THE SEWER LINE AT THE CENTER LINE OF EACH MANHOLE.
 - 7 MANHOLE TOPS IN UNIMPROVED RIGHTS OF WAY TO BE SIX INCHES ABOVE FINISHED GRADE.
 - 8 VITRIFIED CLAY PIPE JOINTS SHALL BE TYPE "D" OR "C" PER STANDARD SPECIFICATIONS SECTION 208-2.
 - 9 IF A POWER POLE IS WITHIN THREE FEET OF THE SEWER, THE SEWER SHALL BE ENCASED, PER S-23, CASE 11, TWO FEET ON EACH SIDE FROM THE POINT OF INTERFERENCE.
 - 10 IF DURING THE COURSE OF CONSTRUCTION IT IS DETERMINED THAT THERE IS LESS THAN FOUR FEET OF COVER OVER THE TOP OF A MAIN LINE OR HOUSE LATERAL VCP SEWER WHICH IS NOT INDICATED ON THE PLANS, THE PIPE SHALL BE ENCASED PER S-23, CASE 11 UNLESS OTHERWISE APPROVED BY THE DIRECTOR OF PUBLIC WORKS.

DOUBLE SCALE

PROFILE, ALIGNMENT AND GRADE OF **PAGE 1**

SANITARY SEWERS
 TO BE CONSTRUCTED IN

TRACT NO 45334

PRIVATE CONTRACT NO. 10785

INDEX A-90
 SHEETS: 5 PAGES (53201)

SCALE: VERT 1"=8' OCT. 26, 1987
 HORIZ 1"=40'

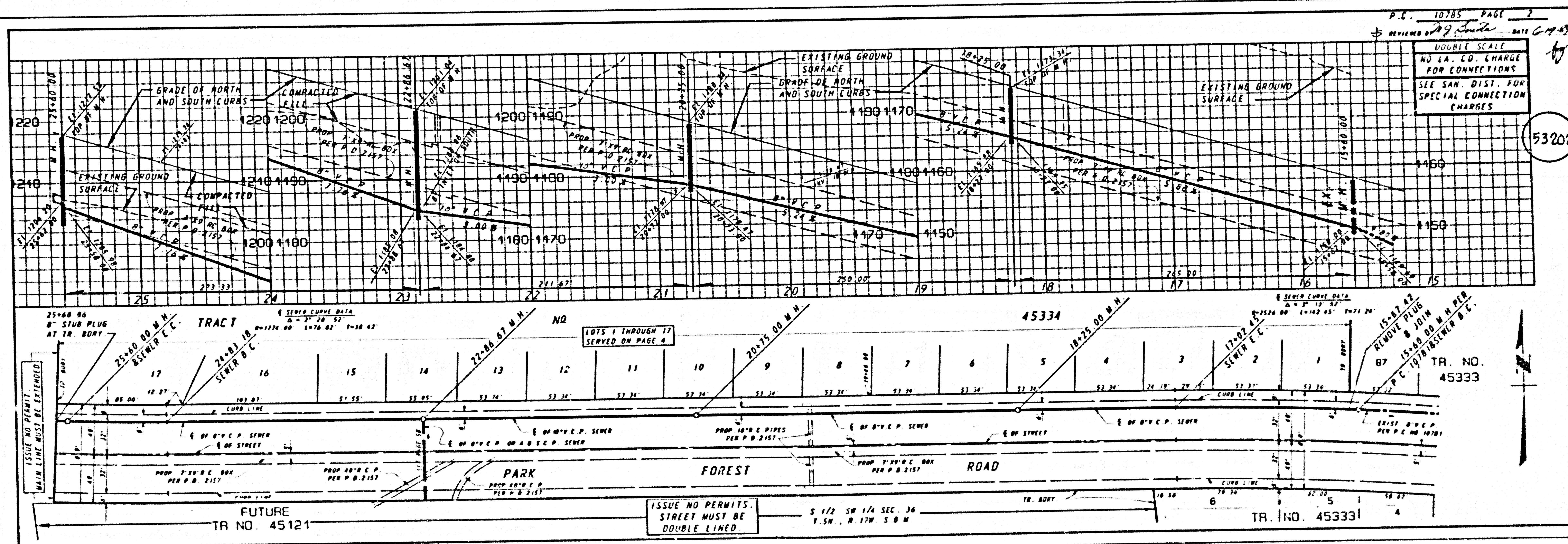
PREPARED IN THE OFFICES OF
ENGINEERING SERVICE CORPORATION
 6017 BRISTOL PARKWAY, FORTMILLS BUSINESS PARK
 COLVER CITY, CALIF. 92023 TELEPHONE 619-212-7999

BY: *[Signature]*
 REG. C.E. NO. 13095

THE FOLLOWING LATEST REVISED STANDARD PLANS ON FILE IN THE OFFICE OF THE DEPT. OF PUBLIC WORKS SHALL APPLY IN THE CONSTRUCTION OF THE PROJECT.

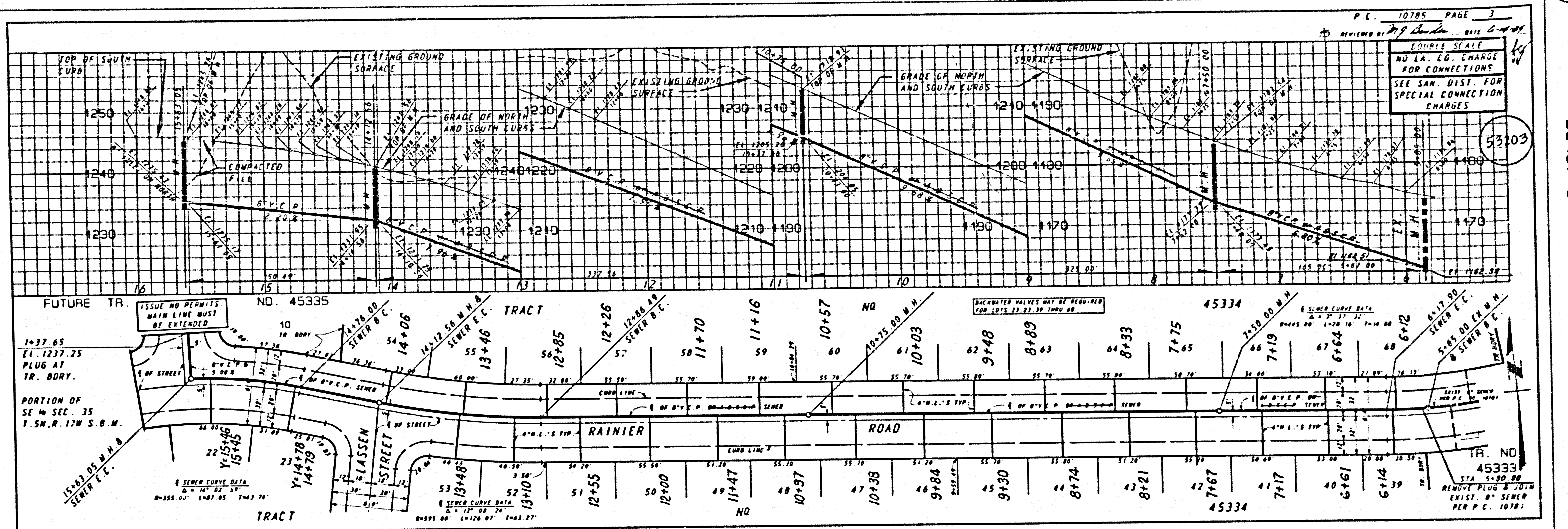
LEGEND	S-1
MINIMUM PUBLIC SAFETY REQUIREMENTS	S-2
BRICK MANHOLE	S-3
STANDARD MANHOLE STEP	S-17
BEDDING FOR SEWER PIPE	S-21
CHADLING AND ENCASEMENT	S-22
VYE OR TEE SUPPORT	S-23
ALLOWABLE TRENCH WIDTHS	S-28
LOCKING MANHOLE FRAMES AND COVER	S-29
NON-REINFORCED PRECAST CONCRETE MANHOLE	S-38

COUNTY OF LOS ANGELES, CALIFORNIA
 THOMAS A. TIDEMANSON, DIRECTOR OF PUBLIC WORKS
 APPROVED *[Signature]* 6/21/87 APPROVED *[Signature]* 6/24/87
 REVIEWED BY *[Signature]* 6/24/87
 1980 TERNIA ENGINEERING (DATE)
 REG. C.E. NO. 10417
 SANTA CLARITA VALLEY, CALIF. DIST. 9 2

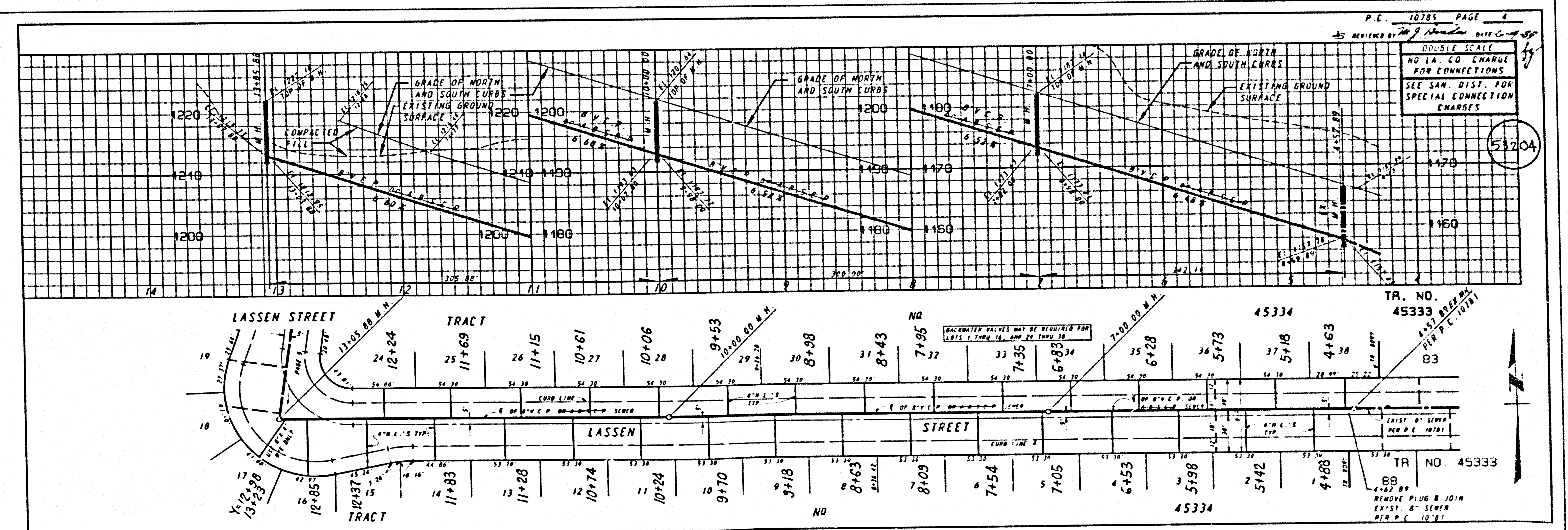


DOUBLE SCALE
 NO L.A. CO. CHARGE FOR CONNECTIONS
 SEE SAN. DIST. FOR SPECIAL CONNECTION CHARGES

28707 09 A8324 00 T0ART



28701 09 45324 QM T3ART



INDUCE SCALE
NO 1A. E.O. CHARGE
FOR CONNECTIONS
SEE SAN. DIST. FOR
SPECIAL CONNECTION
CHARGES

53205

