

SANITARY SEWERS

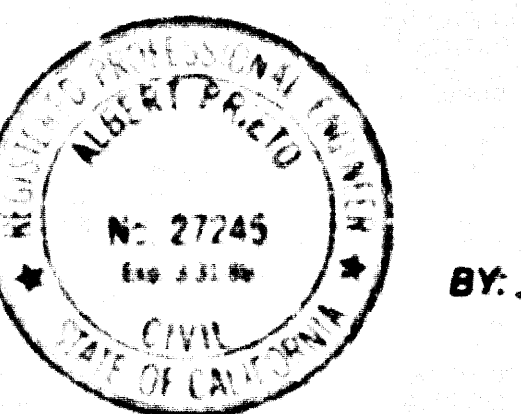
TO BE CONSTRUCTED IN

TRACT NO. 43568 & 35647

PRIVATE CONTRACT NO. 10792

INDEX: C-238 AND C-239
3 SHEETS, 5 PAGES

SCALE: HORIZONTAL 1" = 40' VERTICAL 1" = 10' NOVEMBER 1, 1987



PREPARED IN THE OFFICES OF
KEVIN KEGAN AND ASSOC. INC.
21401 DEVONSHIRE ST., SUITE 125
CHASWORTH, CA. 91311
BY: *Monte ...*
REG. CE NO. 27245

53238

THE FOLLOWING LATEST REVISED STANDARD PLANS ON FILE IN THE OFFICE OF THE DEPARTMENT OF PUBLIC WORKS SHALL APPLY TO THE CONSTRUCTION OF THIS PROJECT

LEGEND	
MINIMUM PUBLIC SAFETY REQUIREMENTS	0-1
STANDARD MANHOLE STEP	0-2
BEDDING FOR SEWER PIPE	0-3
CRACKING AND ENCASING	0-4
PIPE OR TEE SUPPORT	0-5
ALLOWABLE TRENCH WIDTHS	0-6
LOCKING MANHOLE FRAME AND COVER	0-7
NON-REINFORCED PRECAST CONCRETE MANHOLE	0-8
RECTANGULAR SHALLOW MANHOLE	0-9

COUNTY OF LOS ANGELES, CALIFORNIA
THOMAS A. TIDEMANSON, DIRECTOR OF PUBLIC WORKS
LAS VIRGENES MUNICIPAL WATER DISTRICT
APPROVED: *Dean Estabrook* 11-18-88
CHECKED: *James ...* 11-18-88
CALABASAS BLDG. DIST. 9.1

B.M. CY 9059 ELEV. 1283.133
RDBM TAG IN NLY END ROCK AND CONC.
W/DM 15 FT N AND 28 FT E C/L INT
MULHOLLAND HWY AND CANYON DR
MALIBU QUAD. 1900

DOUBLE VERTICAL SCALE

ADDITIONAL GENERAL NOTES:

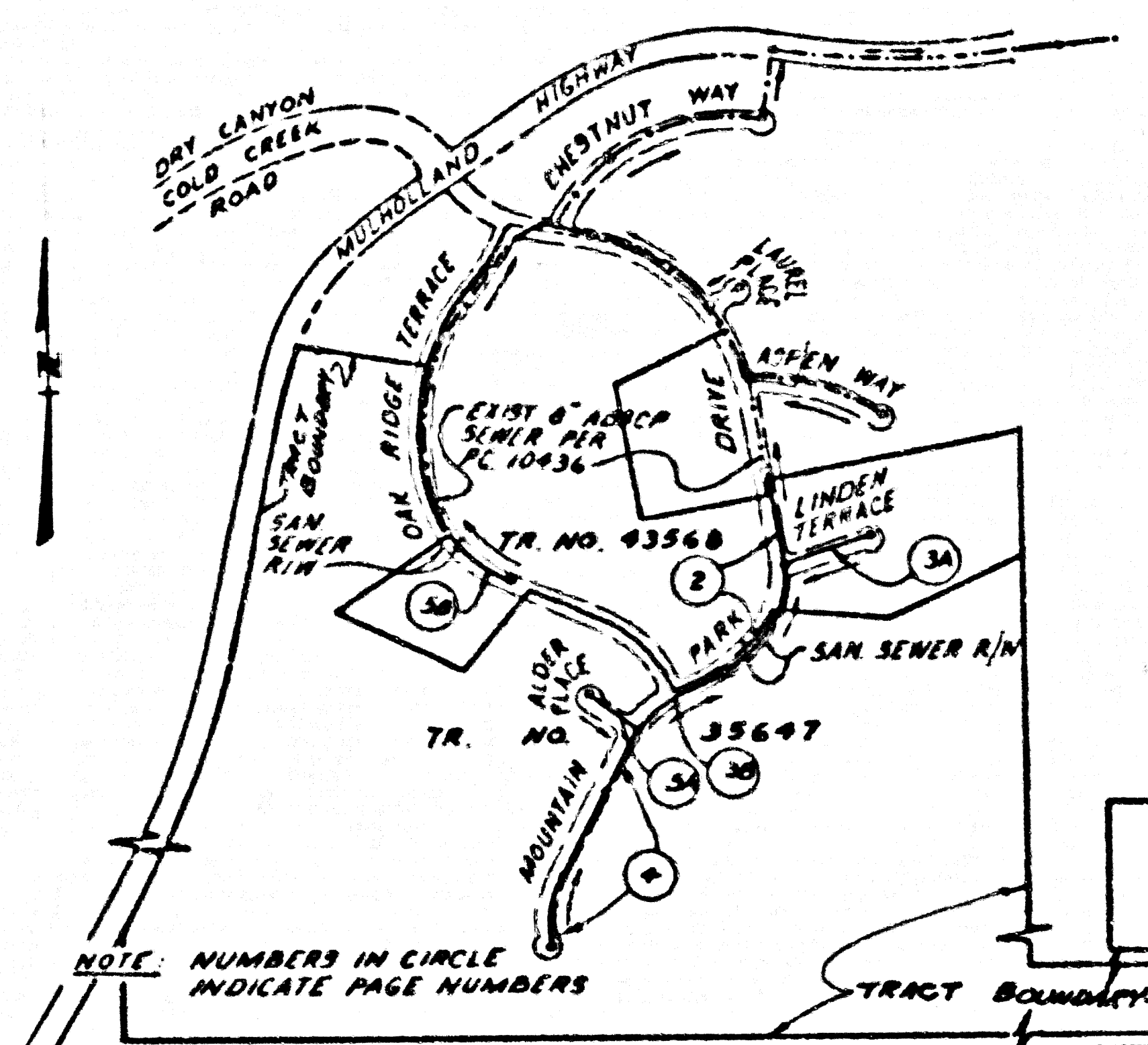
- THE UNDERGROUND UTILITY COMPANIES WITHIN THE LIMITS OF THIS PROJECT ARE AS FOLLOWS:
 - SOUTHERN CALIFORNIA GAS COMPANY
 - LAS VIRGENES MUNICIPAL WATER DISTRICT
 - PACIFIC BELL TELEPHONE

GENERAL NOTES:

- ELEVATIONS ARE IN FEET UNLESS OTHERWISE SPECIFIED.
- NO REVISIONS SHALL BE MADE IN THESE PLANS WITHOUT THE APPROVAL OF THE DIRECTOR OF PUBLIC WORKS.
- NO REPRESENTATIVE OF THE DEPARTMENT OF PUBLIC WORKS SHALL SURVEY OR LAY OUT ANY PORTION OF THE WORK.
- GRADES TO WHICH THIS IMPROVEMENT IS TO BE CONSTRUCTED ARE SHOWN ON PLANS AND VERTICAL GRADE POINTS FOR TOP OF CURBS, CENTERLINE OF STREETS, OR CENTERLINE OF ALLEYS ARE SHOWN BY CIRCLES ON PROFILES AT ALL POINTS FROM THE TOP OF CURBS TO THE CENTERLINE OF STREETS OR ALLEYS.
- THE PRIVATE ENGINEER SHALL FURNISH THE DEPARTMENT OF PUBLIC WORKS WITH THE NECESSARY STATIONING AND STATIONING FOR ALL WORK.
- ALL WORK SHALL BE DONE IN ACCORDANCE WITH THE STANDARD SPECIFICATIONS FOR PUBLIC WORKS CONSTRUCTION, 1988 EDITION, AS AMENDED.
- IF WORK IS TO BE DONE IN A STATE HIGHWAY A PERMIT MUST BE OBTAINED FROM THE STATE OF CALIFORNIA DIVISION OF HIGHWAYS, 150 SOUTH SPRING STREET, LOS ANGELES, CALIFORNIA.
- APPROVAL OF THIS PLAN BY THE COUNTY OF LOS ANGELES DOES NOT CONSTITUTE A REPRESENTATION AS TO THE ACCURACY OF THE LOCATION OF OR THE EXISTENCE OR NON-EXISTENCE OF ANY UNDERGROUND UTILITY PIPE OR STRUCTURE WITHIN THE LIMITS OF THIS PROJECT. THIS NOTE APPLIES TO ALL PAGES.
- REFER TO SECTION 7.16.4 OF THE STANDARD SPECIFICATIONS REGARDING SAFETY ORDERS.
- PRIOR TO THE ISSUANCE OF THE REQUIRED SEWER CONSTRUCTION PERMIT THE CONTRACTOR SHALL OBTAIN AND FILE WITH THE DEPARTMENT OF PUBLIC WORKS COPIES OF A PERMIT TO EXCAVATE IN COUNTY STREETS FROM THE CONSTRUCTION DIVISION BY THE DEPARTMENT OF PUBLIC WORKS. A PERMIT FOR EXCAVATIONS AND TRENCHES FROM THE STATE OF CALIFORNIA, DIVISION OF INDUSTRIAL SAFETY AND CALIFORNIA STATE OF WORKERS COMPENSATION INSURANCE WITH THE DEPARTMENT OF PUBLIC WORKS, 800 S. FREEMONT AVE., ALHAMBRA, CALIFORNIA 91803, MUST BE OBTAINED AS A CONDITION FOR THE PERMIT TO EXCAVATE IN COUNTY STREETS.

ADDITIONAL CONSTRUCTION NOTES:

- WORK SHALL BE CONSTRUCTED ACCORDING TO THE STANDARD SPECIFICATIONS FOR PUBLIC WORKS CONSTRUCTION, 1988 EDITION, AS AMENDED.
- THE CONTRACTOR SHALL NOTIFY THE CONSTRUCTION DIVISION BY TELEPHONE 495-4999 AT LEAST TWENTY-FOUR HOURS BEFORE STARTING ANY WORK UNDER THIS CONTRACT.
- HOUSE LATERALS TO BE CONSTRUCTED WITH INVERTS AT PROPERTY LINE 6 FEET BELOW CURB GRADE EXCEPT AS NOTED.
- PIPE OR TEE BRANCHES MAY BE USED FOR CONNECTIONS TO MAINLINE SEWERS EXCEPT AS NOTED.
- ALL STRUCTURES SHALL BE SET BY BRICK MANHOLES PER S.D.P. PRECAST CONCRETE MANHOLES PER S.D.P. EXCEPT AS NOTED.
- PROVIDE STAKES ON THE PROPERTY LINE OR PROPERTY LINES PRODUCED AT RIGHT ANGLES TO THE SEWER LINE AT THE CENTERLINE OF EACH MANHOLE.
- MANHOLE TOPS IN UNIMPROVED RIGHTS OF WAY TO BE SIX INCHES ABOVE FINISHED GRADE.
- VITRIFIED CLAY PIPE JOINTS SHALL BE TYPE "O" OR "P" PER STANDARD SPECIFICATIONS SECTION 200-2.
- IF A POWER POLE IS WITHIN THREE FEET OF THE SEWER THE SEWER SHALL BE ENCASED PER S.D.P. CASE 4 TWO FEET ON EACH SIDE FROM THE POINT OF INTERFERENCE.
- IF DURING THE COURSE OF CONSTRUCTION IT IS DETERMINED THAT THERE IS LESS THAN FOUR FEET OF COVER OVER THE TOP OF A MAINLINE OR HOUSE LATERAL V.C.P. SEWER WHICH IS NOT INDICATED ON THE PLANS, THE PIPE SHALL BE ENCASED PER S.D.P. CASE 4 UNLESS OTHERWISE APPROVED BY THE DIRECTOR OF PUBLIC WORKS.
- ALL JOINTS BETWEEN CAST IRON PIPE AND VITRIFIED CLAY PIPE SHALL BE MADE WITH A RUBBER BLADE JOINT, TYPE "C" OR "D" (WITH BRUSHING OF RACE CARBON PER STANDARD SPECIFICATIONS SECTION 200-2).
- ALL JOINTS BETWEEN CAST IRON PIPE AND A.B.S.C.P. SHALL BE MADE WITH APPROVED INTERFACING.
- SEWER TO BE TESTED FOR LEAKS PER SECTION 200-1.4 OF THE STANDARD SPECIFICATIONS TRENCHES AND SPECIAL PROVISIONS.
- REINFORCE ALL TRENCHES WITHIN RIGID AREAS TO MEET LOS ANGELES COUNTY PUBLIC WORKS OR CALIFORNIA STATE HIGHWAY REQUIREMENTS IN ACCORDANCE WITH PERMITS.
- FULL COMPLIANCE WITH SECTION 306-1.8 OF THE STANDARD SPECIFICATIONS WILL BE REQUIRED FOR BACKFILL IN STREETS. CERTIFICATION OF BACKFILL COMPACTION AND SAND EQUIVALENTS BY A CHALLENGED REGISTERED TESTING LABORATORY SHALL BE PROVIDED BY THE CONTRACTOR PRIOR TO THE ISSUANCE OF A CERTIFICATE OF PARTIAL ACCEPTANCE.
- SPECIAL BACKFILL IN GALLEY CONSTRUCTION (IN BACKFILL TRENCH AND REPLACE OTHER BARTH SO AS TO ACHIEVE THE NATURAL OR FINISHED GRADES AND SLOPES SHOWN ON THE GRADING PLAN APPROVED FOR THIS DEVELOPMENT BY THE LAND DEVELOPMENT DIVISION IS ALL BACKFILL AND WITHIN A PLACED SHALL BE COMPACTED TO A MINIMUM OF 80% OF MAXIMUM DENSITY PER S.D.P. 310-107-00.1 FIRST ONE (1) 15' TRENCH ACCEPTANCE CERTIFICATION OF SUCH COMPACTION SHALL BE SUBMITTED TO THE CONSTRUCTION DIVISION OF THE DEPARTMENT OF PUBLIC WORKS.
- NO CONNECTIONS FOR THE DISPOSAL OF INDUSTRIAL WASTE IS ALLOWED IN A.B.S. COMPOSITE PIPE IS USED.
- SEWER LINE CURVATURE SHALL NOT BE ACHIEVED BY PULLING OF JOINTS OR BEVELING PIPE ENDS WHEN USING PLASTIC PIPE INCLUDING A.B.S. COMPOSITE PIPE.
- ALL WYES/HOUSE LATERALS ARE TO BE LOCATED AT LEAST 3 FEET APART WHEN POSSIBLE NOT CLOSER THAN 3 FEET TO ANY MANHOLE.
- A.B.S. SOLID WALL PIPE IS NOT ACCEPTABLE FOR USE AS MAINLINE SEWER.



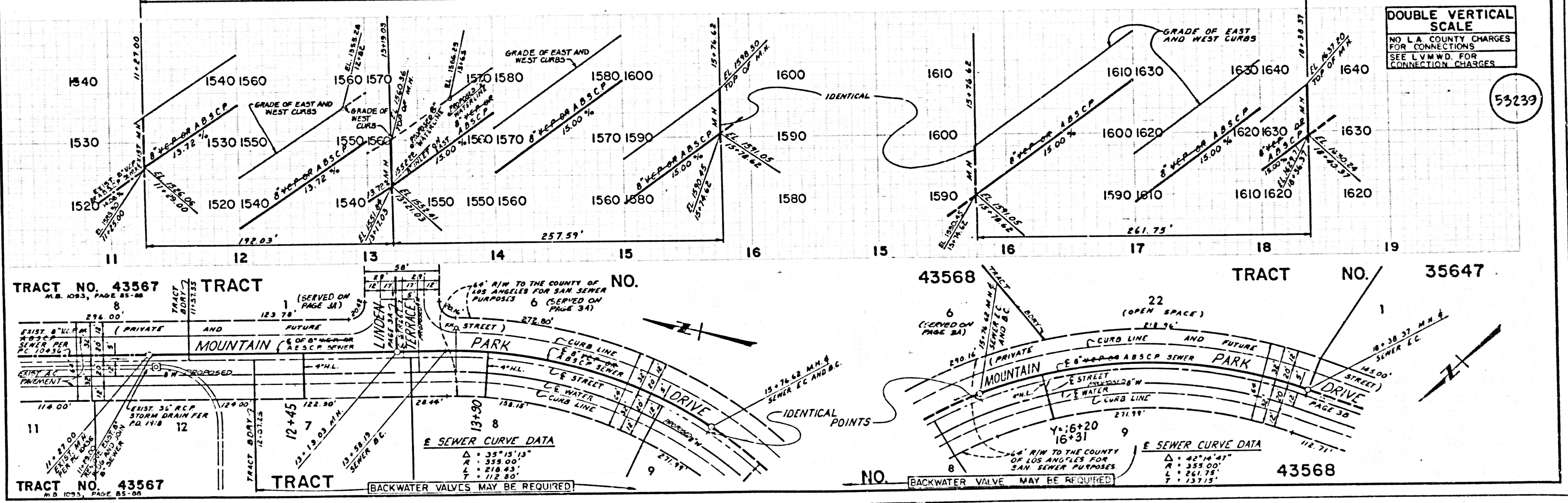
INDEX MAP
SCALE 1" = 400'
PC 10792
TRACT NO. 43568 AND 35647

ISSUE NO H.L. CONNECTION PERMITS UNTIL OUTLET P.C. 10436 IS ACCEPTED FOR PUBLIC USE BY THE COUNTY OF L.A.

LOT NO. 14, TR. 43568 AND LOT NO. 22, TR. 35647 ARE OPEN SPACE LOTS RESTRICTED TO NO CONSTRUCTION AND WILL NOT BE SERVED BY THIS SEWER.

SEE SPECIAL BACKFILL NOTE NO. 15 ON PAGE 1, CONCERNING COMPACTION

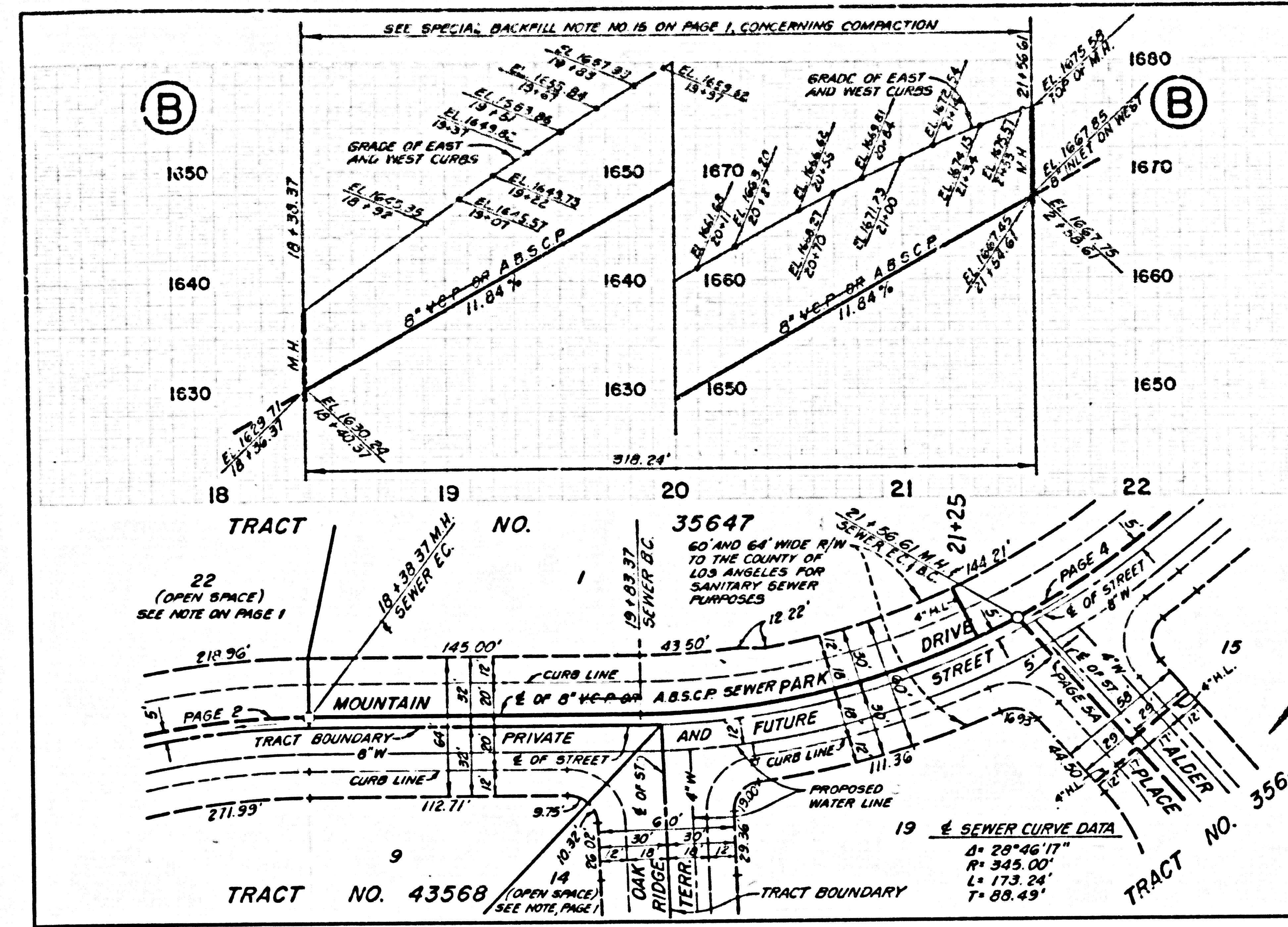
REVIEWED BY: *Sam G. ...* P.C. 10792 PAGE 2
DATE 11-16-88



DOUBLE VERTICAL SCALE
NO L.A. COUNTY CHARGES FOR CONNECTIONS
SEE PLAN VIEW FOR CONNECTION CHARGES

53239

SECTION 19 PART 01 B 8024 PART 1



SECTION 09 TAPED ON & BUILT ON T-CART

DOUBLE VERTICAL SCALE

(B)

(A)

(A)

53241

NO L.A. COUNTY CHARGES FOR CONNECTIONS SEE L.V.M.W.D. FOR CONNECTION CHARGES

NO L.A. COUNTY CHARGES FOR CONNECTIONS SEE L.V.M.W.D. FOR CONNECTION CHARGES

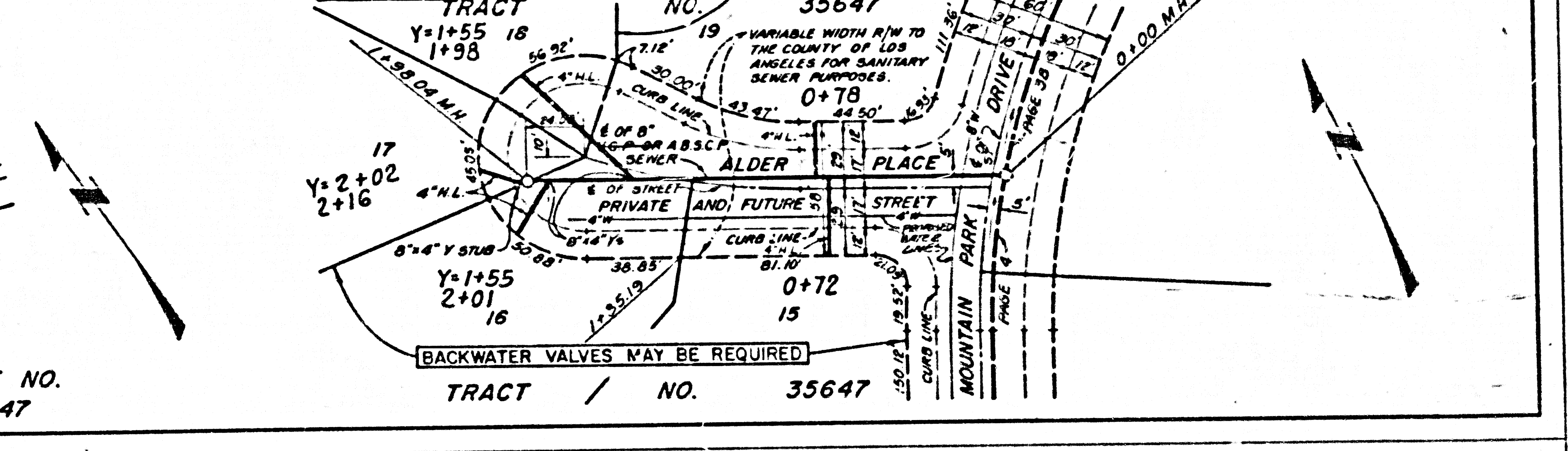
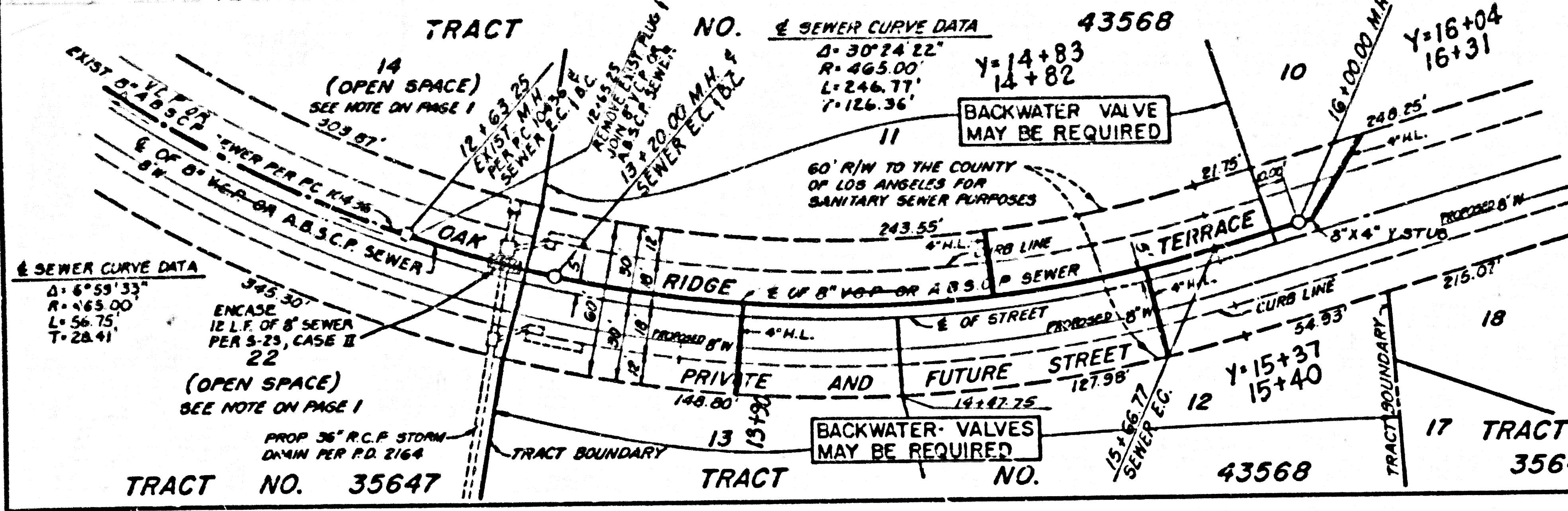
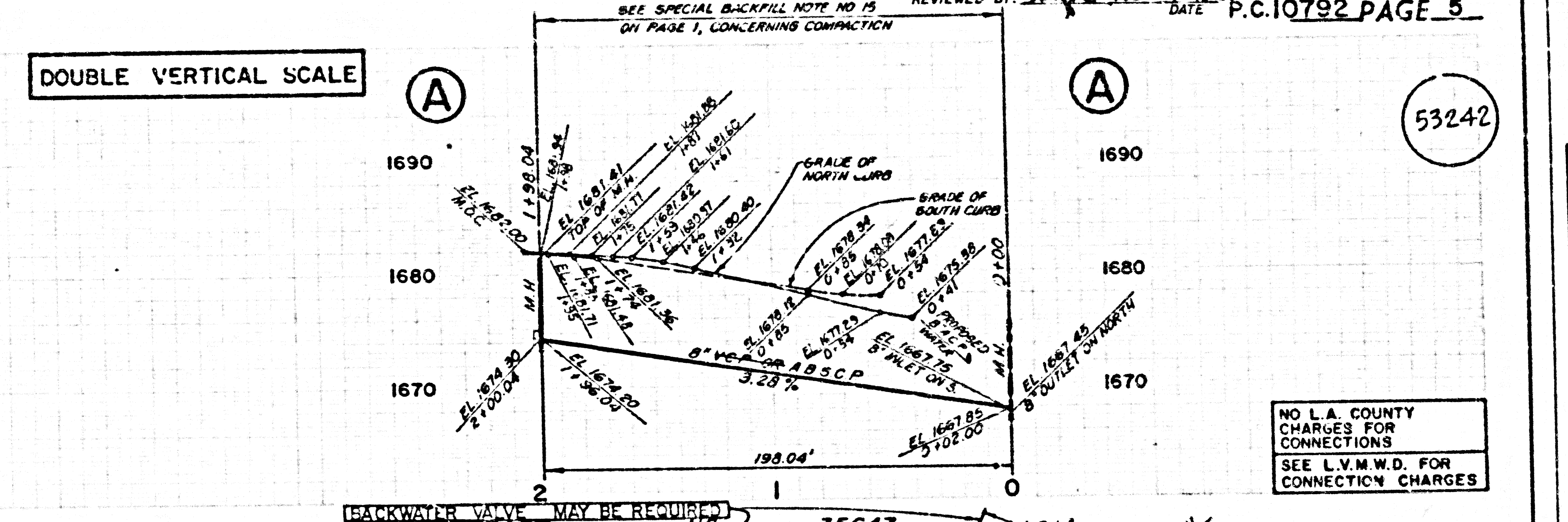
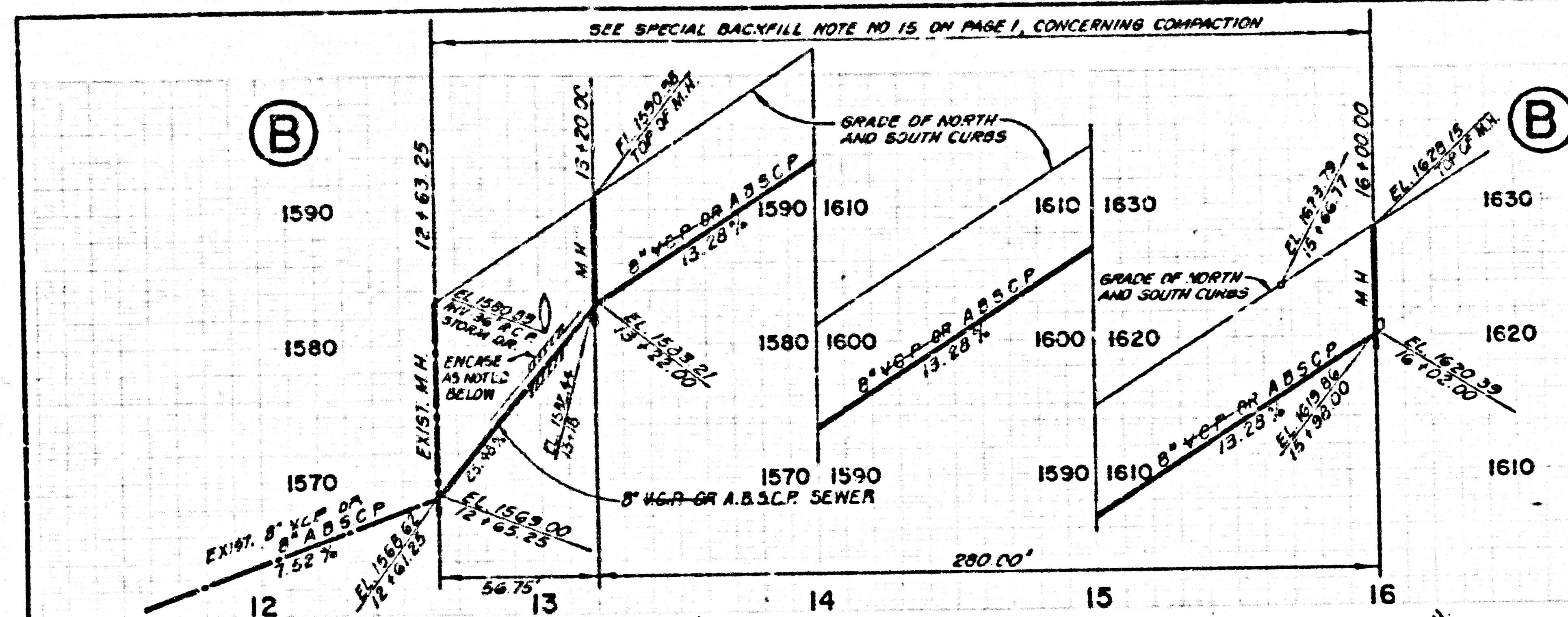
SEWER CURVE DATA
 $\Delta = 18^{\circ}02'42''$
 $R = 355.00'$
 $L = 111.81'$
 $T = 56.31'$

SEWER CURVE DATA
 $\Delta = 29^{\circ}46'11''$
 $R = 345.00'$
 $L = 173.24'$
 $T = 88.49'$

SEWER CURVE DATA
 $\Delta = 25^{\circ}00'00''$
 $R = 390'$
 $L = 165.81'$
 $T = 84.24'$

SEWER CURVE DATA
 $\Delta = 11^{\circ}13'43''$
 $R = 345.00'$
 $L = 67.61'$
 $T = 33.91'$

SEWER CURVE DATA
 $\Delta = 25^{\circ}00'00''$
 $R = 390'$
 $L = 165.81'$
 $T = 84.24'$



— PAGE —

SECTION 39 T432E ON B 882E4 ON T3ART