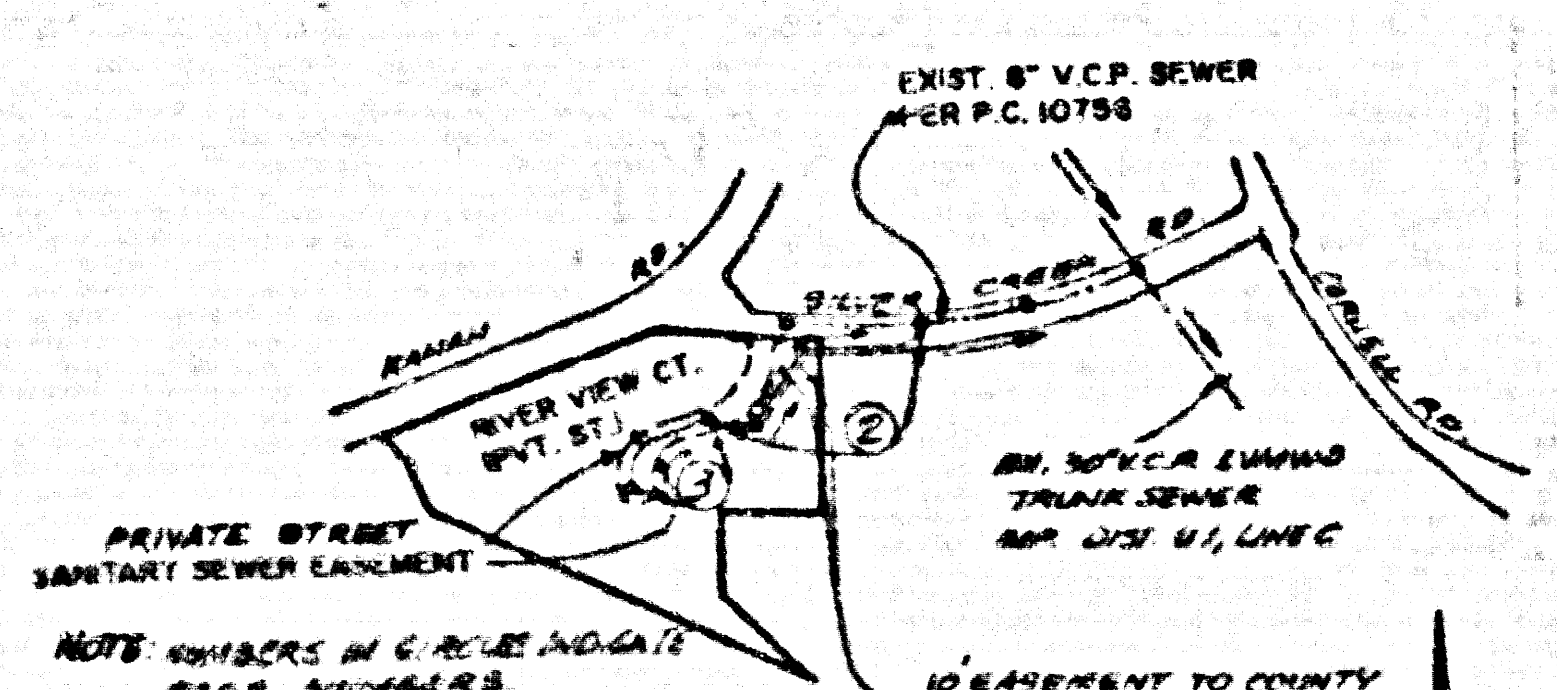


B.M. 7604 ELEV. 227.840
 3.5 M. CON. ENLUP ON N.W. COR. CORNELL RD.
 AND CREEK CHECK NO. 20 FT. M. AND 30 FT. W.
 CL. AND U.M. 55-3 1963 Z.P. NO. 3 FT.
 UP 3 FT.
 MALIBU QUAD. 19 80



INDEX MAP
 1" = 800'
 TRACT NO. 43183
 P.C. 10803
 T.G. 100A A.5

16. FULL COMPLIANCE WITH PART IV OF THE SPECIAL PROVISIONS IS REQUIRED FOR THE INSTALLATION OF A.B.S. COMPOSITE PIPE.
17. MANHOLE WATER STOP GASKETS AND CLAMPS ARE REQUIRED FOR THE CONNECTION OF A.B.S. COMPOSITE PIPE TO MANHOLE STRUCTURES.
18. A.B.S. SOLID BALL PIPE MUST BE USED FOR RIVE AND HOUSE LATERAL CONNECTION TO A.B.S. COMPOSITE PIPE MAINLINE SEWER.
19. A.B.S. COMPOSITE PIPE SHALL BE BEDDED IN CONFORMANCE WITH THE TABLE IN SECTION B-3J OF PART IV OF THE SPECIAL PROVISIONS.
20. THREE SEWER DEFLECTION COUPLERS ARE REQUIRED FOR RADIIUS CURVATURE LESS THAN 380 FEET RADIIUS WHEN USING 8" A.B.S.C.P.
21. NO CONNECTIONS FOR THE DISPOSAL OF INDUSTRIAL WASTE IS ALLOWED IF A.B.S. COMPOSITE PIPE IS USED.
22. SEWER LINE CURVATURE SHALL NOT BE ACHIEVED BY PULLING OF JOINTS OR BEVELING PIPE ENDS WHEN USING PLASTIC PIPE INCLUDING A.B.S. PIPE.
23. CONTRACTOR TO VERIFY INVERT ELEVATION OF 6" V.C.P. SEWER PIPE AT START OF CONSTRUCTION (10+00.00) AND TO ADJUST ACCORDINGLY.
24. ALL RIVE AND/OR HOUSE LATERALS ARE TO BE LOCATED AT LEAST FIVE FEET APART AND WHEN POSSIBLE NOT CLOSER THAN FIVE FEET TO ANY MANHOLE.
25. A.B.S. SOLID BALL PIPE IS NOT ACCEPTABLE FOR USE AS MAINLINE SEWER.
26. ONLY RIVE BRANCHES ARE TO BE USED FOR CONNECTIONS TO A.B.S. COMPOSITE MAINLINE SEWER PIPE.

GENERAL NOTES:

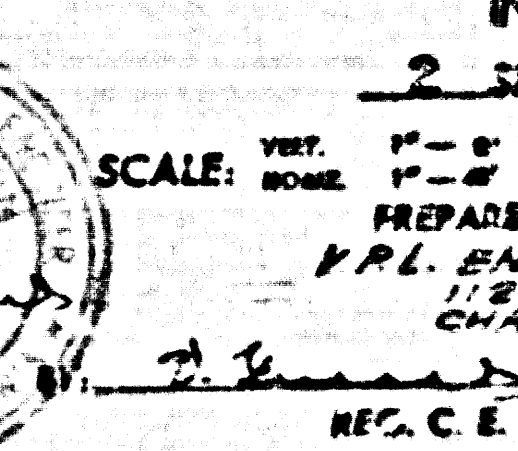
1. ELEVATIONS ARE AS SHOWN UNLESS OTHERWISE NOTED.
2. NO REVISIONS SHALL BE MADE IN THESE PLANS WITHOUT THE APPROVAL OF THE DIRECTOR OF PUBLIC WORKS.
3. NO REVISIONS SHALL BE MADE IN THESE PLANS WITHOUT THE APPROVAL OF THE DIRECTOR OF PUBLIC WORKS.
4. GRADES TO WHICH THIS IMPROVEMENT IS TO BE CONSTRUCTED ARE SHOWN ON ALL PROFILES. GRADE POINTS FOR "UP" OF CURVES CENTER LINE OF STREETS ON CENTER LINE OF RIVERS AND GRADES OF CURVES ON PROFILES AT ALL POINTS BETWEEN GRADE POINTS THE GRADE SHALL BE ESTABLISHED AS TO CONFORM TO ALL STREET LINE DIMENSIONS OF THESE SAID GRADE POINTS.
5. THE PRIVATE ENGINEER SHALL FURNISH 1" = 40' THE DEPT. OF PUBLIC WORKS WITH GRADE SHEETS AND STATIONING FOR ALL RELIEVE LATERALS. ALL RELIEVE LATERALS SHALL BE CONSTRUCTED IN A STRAIGHT ALIGNMENT AT RIGHT ANGLES FROM THE MAIN LINE SEWER EXCEPT IN CASES WHERE THE GRADE INFLUENCE FROM CONVEYERS SHALL NOT HAVE AN ANGLE OF LESS THAN 45° WITH THE MAIN LINE SEWER AND CHANGE IN ALIGNMENT SHALL BE INDICATED IN WRITING BY THE PRIVATE ENGINEER.
6. THE PRIVATE ENGINEER SHALL FURNISH THE HOUSE LATERAL DEPTH AT THE PROPERTY LINE BELOW THE TOP OF CURB ELEVATION FOR EACH HOUSE LATERAL ON THE GRADE SHEET.
7. BEFORE WORK CAN BE STARTED, THE CONTRACTOR MUST OBTAIN A PERMIT TO EXCAVATE IN "CITY" STREETS FROM THE COUNTY DEPT. OF PUBLIC WORKS. THE CONTRACTOR SHALL BE RESPONSIBLE FOR THE COST OF OBTAINING SUCH PERMIT AND FOR THE COST OF THE PERMIT.
8. IF WORK IS TO BE DONE IN A STATE HIGHWAY A PERMIT MUST BE OBTAINED FROM THE STATE OF CALIFORNIA DIVISION OF HIGHWAYS, 120 SOUTH SPRING STREET, LOS ANGELES, CALIFORNIA.
9. APPROVAL OF THIS PLAN BY THE COUNTY OF LOS ANGELES DOES NOT CONSTITUTE A REPRESENTATION AS TO THE ACCURACY OF THE LOCATION OF OR THE EXISTENCE OR NON-EXISTENCE OF ANY UNDERGROUND UTILITY PIPE OR STRUCTURE WITHIN THE LIMITS OF THIS PROJECT. THIS NOTE APPLIES TO ALL PAGES.
10. REFER TO SECTION 71341 OF THE STANDARD SPECIFICATIONS REGARDING SAFETY CROSSING.
11. BEFORE THE COMMENCEMENT OF THE RECORDING OF THESE PLANS THE CONTRACTOR SHALL OBTAIN AND FILE WITH THE COUNTY DEPT. OF PUBLIC WORKS A PERMIT TO EXCAVATE IN "CITY" STREETS FROM THE COUNTY DEPT. OF PUBLIC WORKS. THE CONTRACTOR SHALL BE RESPONSIBLE FOR THE COST OF OBTAINING SUCH PERMIT AND FOR THE COST OF THE PERMIT.

CONSTRUCTION NOTES:

1. WORK SHALL BE CONSTRUCTED ACCORDING TO THE STANDARD SPECIFICATIONS FOR PUBLIC WORKS CONSTRUCTION DATED JULY 31, 1989 AND SHALL BE CONSTRUCTED ONLY IN THE PRESENCE OF THE DEPT. OF PUBLIC WORKS.
2. THE CONTRACTOR SHALL NOTIFY THE CONSTRUCTION DIVISION BY TELEPHONE, 800-800-8089 AT LEAST TWENTY-FOUR HOURS BEFORE START AND ANY WORK UNDER THE CONTRACT.
3. HOUSE LATERALS TO BE CONSTRUCTED WITHIN 18" OF PROPERTY LINE 6 FEET BELOW CURB GRADE EXCEPT AS NOTED.
4. RIVE OR THE BRANCHES MAY BE USED FOR CONNECTIONS TO MAINLINE SEWER EXCEPT AS NOTED.
5. ALL STRUCTURES SHALL BE EITHER BRICK MANHOLES PER 3.3 OR PRECAST CONCRETE MANHOLES PER 3.36 EXCEPT AS NOTED.
6. PROVIDE STAIRS ON THE PROPERTY LINE OR PROPERTY LINE AS INDICATED AT RIGHT ANGLES TO THE SEWER LINE AT THE CENTER LINE OF EACH MANHOLE.
7. MANHOLE TOPS IN UNIMPROVED RIGHTS OF WAY TO BE SEE ABOVE FINISHED GRADE.
8. INTRODUCED CLAY PIPE JOINTS SHALL BE 1" OR 1/2" PER STANDARD SPECIFICATIONS SECTION 303.2.
9. IF A POWER POLE IS WITHIN THREE FEET OF THE SEWER, THE SEWER SHALL BE ENCASED PER 3.36 CASE 4 TWO FEET ON EACH SIDE FROM THE POINT OF INTERFERENCE.
10. IF EXCAVATION OF THE COURSE OF CONSTRUCTION IT IS DETERMINED THAT THERE IS LESS THAN 18" FOUR FEET OF COVER OVER THE TOP OF A MAINLINE OR HOUSE LATERAL SEWER WHICH IS NOT INDICATED ON THE PLANS, THE PIPE SHALL BE ENCASED PER 3.36 CASE 4 UNLESS OTHERWISE APPROVED BY THE COUNTY DIRECTOR OF PUBLIC WORKS.
11. ALL JOINTS BETWEEN CAST IRON PIPE AND OTHER CLAY PIPE SHALL BE MADE WITH A RUBBER SLEEVE JOINT TYPE "D" OR "E".
12. ALL JOINTS BETWEEN PRECAST CONCRETE PER STANDARD SPECIFICATIONS SECTION 303.2.
13. ALL JOINTS BETWEEN PRECAST CONCRETE PER STANDARD SPECIFICATIONS SECTION 303.2.
14. REINFORCE ALL TRENCHES IN UNIMPROVED AREAS TO MEET L.A. COUNTY PUBLIC WORKS DEPT. OR CALIFORNIA STATE HIGHWAY REQUIREMENTS IN ACCORDANCE WITH PERMITS.
15. FULL COMPLIANCE WITH SECTION 303.2 OF THE S.P.S. SPECIFICATIONS WILL BE REQUIRED FOR BACKFILL IN STREETS OR VARIATION OF BACKFILL COMPACTION AND SAND EQUIVALENTS BY A QUALIFIED REGISTERED TESTING LABORATORY SHALL BE PROVIDED BY THE PERMITTEE PRIOR TO THE ISSUANCE OF A CERTIFICATE OF PARTIAL ACCEPTANCE.
16. SPECIAL BACKFILL IN EXISTING CONSTRUCTION OR EXISTING TRENCHES AND REPLACE OTHER EARTH SO AS TO ACHIEVE THE NATURAL OR FINISHED GRADES AND SLOPE SHOWN ON THE DRAWING PLAN APPROVED FOR THIS DEVELOPMENT BY THE LAND DEVELOPMENT DEPT. IN ALL BACKFILL AND EARTH REPLACEMENTS SHALL BE CONFINED TO A 30" MAXIMUM FROM THE SURFACE OF DEVELOPMENT. ALL BACKFILL AND EARTH REPLACEMENTS SHALL BE CONFINED TO A 30" MAXIMUM FROM THE SURFACE OF DEVELOPMENT. ALL BACKFILL AND EARTH REPLACEMENTS SHALL BE CONFINED TO A 30" MAXIMUM FROM THE SURFACE OF DEVELOPMENT.

DOUBLE SCALE

PROFILE, ALIGNMENT AND GRADE OF
SANITARY SEWERS
 TO BE CONSTRUCTED IN
 TRACT NO. 43183

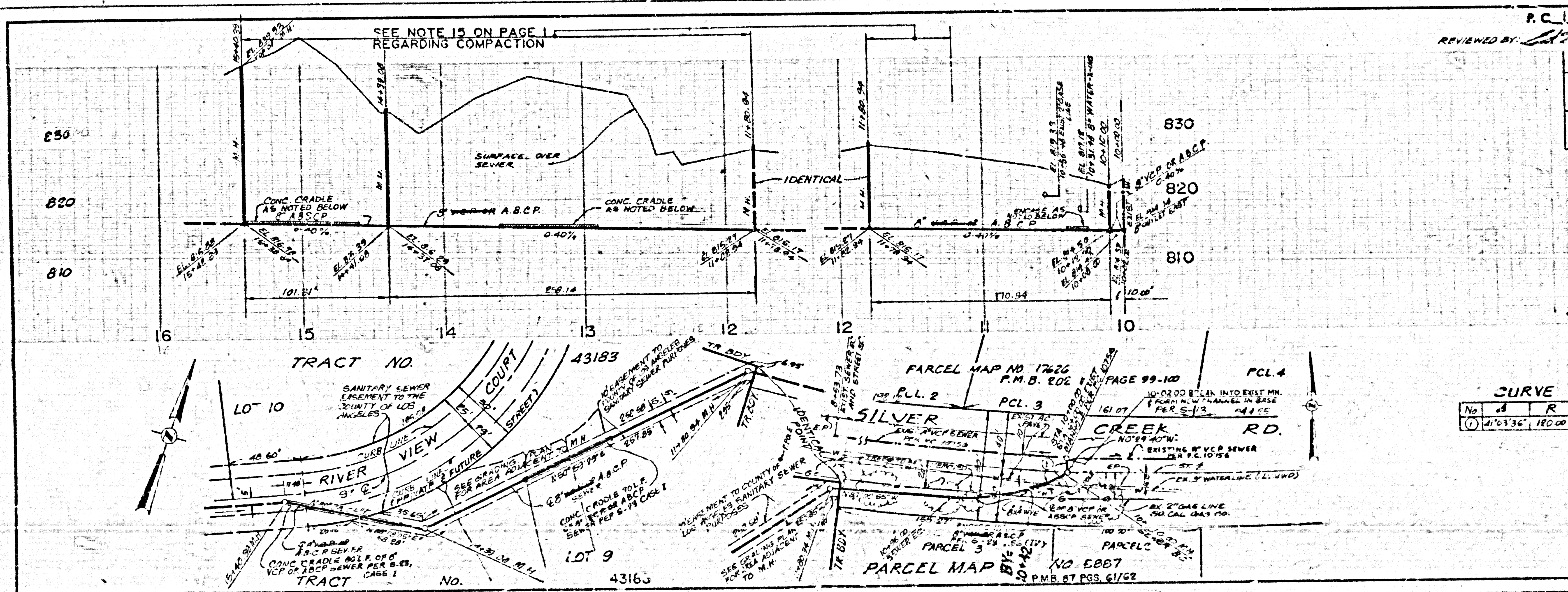


INDEX C-242
 2 SHEETS, 3 PAGES
 SCALE: VERT. 1" = 4'
 HORIZ. 1" = 40'
 APRIL, 1989
 PREPARED IN THE OFFICES OF
 P.R.L. ENGINEERING INC.
 18111 GARDEN ROAD
 VAN NUYS, CALIF. 91411
 PHONE 700-9573
 REG. C.E. No. 88021

THE FOLLOWING LATEST REVISED STANDARD PLANS SET OUT IN THE OFFICE OF THE COUNTY ENGINEER SHALL APPLY IN THE CONSTRUCTION OF THIS PROJECT:

SEWER	3-1
SEWER MANHOLE	3-2
SEWER MANHOLE WITH 18" DIA. MANHOLE	3-3
SEWER MANHOLE WITH 18" DIA. MANHOLE AND 18" DIA. MANHOLE	3-4
SEWER MANHOLE WITH 18" DIA. MANHOLE AND 18" DIA. MANHOLE	3-5
SEWER MANHOLE WITH 18" DIA. MANHOLE AND 18" DIA. MANHOLE	3-6
SEWER MANHOLE WITH 18" DIA. MANHOLE AND 18" DIA. MANHOLE	3-7
SEWER MANHOLE WITH 18" DIA. MANHOLE AND 18" DIA. MANHOLE	3-8
SEWER MANHOLE WITH 18" DIA. MANHOLE AND 18" DIA. MANHOLE	3-9
SEWER MANHOLE WITH 18" DIA. MANHOLE AND 18" DIA. MANHOLE	3-10
SEWER MANHOLE WITH 18" DIA. MANHOLE AND 18" DIA. MANHOLE	3-11
SEWER MANHOLE WITH 18" DIA. MANHOLE AND 18" DIA. MANHOLE	3-12
SEWER MANHOLE WITH 18" DIA. MANHOLE AND 18" DIA. MANHOLE	3-13
SEWER MANHOLE WITH 18" DIA. MANHOLE AND 18" DIA. MANHOLE	3-14
SEWER MANHOLE WITH 18" DIA. MANHOLE AND 18" DIA. MANHOLE	3-15
SEWER MANHOLE WITH 18" DIA. MANHOLE AND 18" DIA. MANHOLE	3-16
SEWER MANHOLE WITH 18" DIA. MANHOLE AND 18" DIA. MANHOLE	3-17
SEWER MANHOLE WITH 18" DIA. MANHOLE AND 18" DIA. MANHOLE	3-18
SEWER MANHOLE WITH 18" DIA. MANHOLE AND 18" DIA. MANHOLE	3-19
SEWER MANHOLE WITH 18" DIA. MANHOLE AND 18" DIA. MANHOLE	3-20
SEWER MANHOLE WITH 18" DIA. MANHOLE AND 18" DIA. MANHOLE	3-21
SEWER MANHOLE WITH 18" DIA. MANHOLE AND 18" DIA. MANHOLE	3-22
SEWER MANHOLE WITH 18" DIA. MANHOLE AND 18" DIA. MANHOLE	3-23
SEWER MANHOLE WITH 18" DIA. MANHOLE AND 18" DIA. MANHOLE	3-24
SEWER MANHOLE WITH 18" DIA. MANHOLE AND 18" DIA. MANHOLE	3-25
SEWER MANHOLE WITH 18" DIA. MANHOLE AND 18" DIA. MANHOLE	3-26
SEWER MANHOLE WITH 18" DIA. MANHOLE AND 18" DIA. MANHOLE	3-27
SEWER MANHOLE WITH 18" DIA. MANHOLE AND 18" DIA. MANHOLE	3-28
SEWER MANHOLE WITH 18" DIA. MANHOLE AND 18" DIA. MANHOLE	3-29
SEWER MANHOLE WITH 18" DIA. MANHOLE AND 18" DIA. MANHOLE	3-30
SEWER MANHOLE WITH 18" DIA. MANHOLE AND 18" DIA. MANHOLE	3-31
SEWER MANHOLE WITH 18" DIA. MANHOLE AND 18" DIA. MANHOLE	3-32
SEWER MANHOLE WITH 18" DIA. MANHOLE AND 18" DIA. MANHOLE	3-33
SEWER MANHOLE WITH 18" DIA. MANHOLE AND 18" DIA. MANHOLE	3-34
SEWER MANHOLE WITH 18" DIA. MANHOLE AND 18" DIA. MANHOLE	3-35
SEWER MANHOLE WITH 18" DIA. MANHOLE AND 18" DIA. MANHOLE	3-36
SEWER MANHOLE WITH 18" DIA. MANHOLE AND 18" DIA. MANHOLE	3-37
SEWER MANHOLE WITH 18" DIA. MANHOLE AND 18" DIA. MANHOLE	3-38
SEWER MANHOLE WITH 18" DIA. MANHOLE AND 18" DIA. MANHOLE	3-39
SEWER MANHOLE WITH 18" DIA. MANHOLE AND 18" DIA. MANHOLE	3-40
SEWER MANHOLE WITH 18" DIA. MANHOLE AND 18" DIA. MANHOLE	3-41
SEWER MANHOLE WITH 18" DIA. MANHOLE AND 18" DIA. MANHOLE	3-42
SEWER MANHOLE WITH 18" DIA. MANHOLE AND 18" DIA. MANHOLE	3-43
SEWER MANHOLE WITH 18" DIA. MANHOLE AND 18" DIA. MANHOLE	3-44
SEWER MANHOLE WITH 18" DIA. MANHOLE AND 18" DIA. MANHOLE	3-45
SEWER MANHOLE WITH 18" DIA. MANHOLE AND 18" DIA. MANHOLE	3-46
SEWER MANHOLE WITH 18" DIA. MANHOLE AND 18" DIA. MANHOLE	3-47
SEWER MANHOLE WITH 18" DIA. MANHOLE AND 18" DIA. MANHOLE	3-48
SEWER MANHOLE WITH 18" DIA. MANHOLE AND 18" DIA. MANHOLE	3-49
SEWER MANHOLE WITH 18" DIA. MANHOLE AND 18" DIA. MANHOLE	3-50

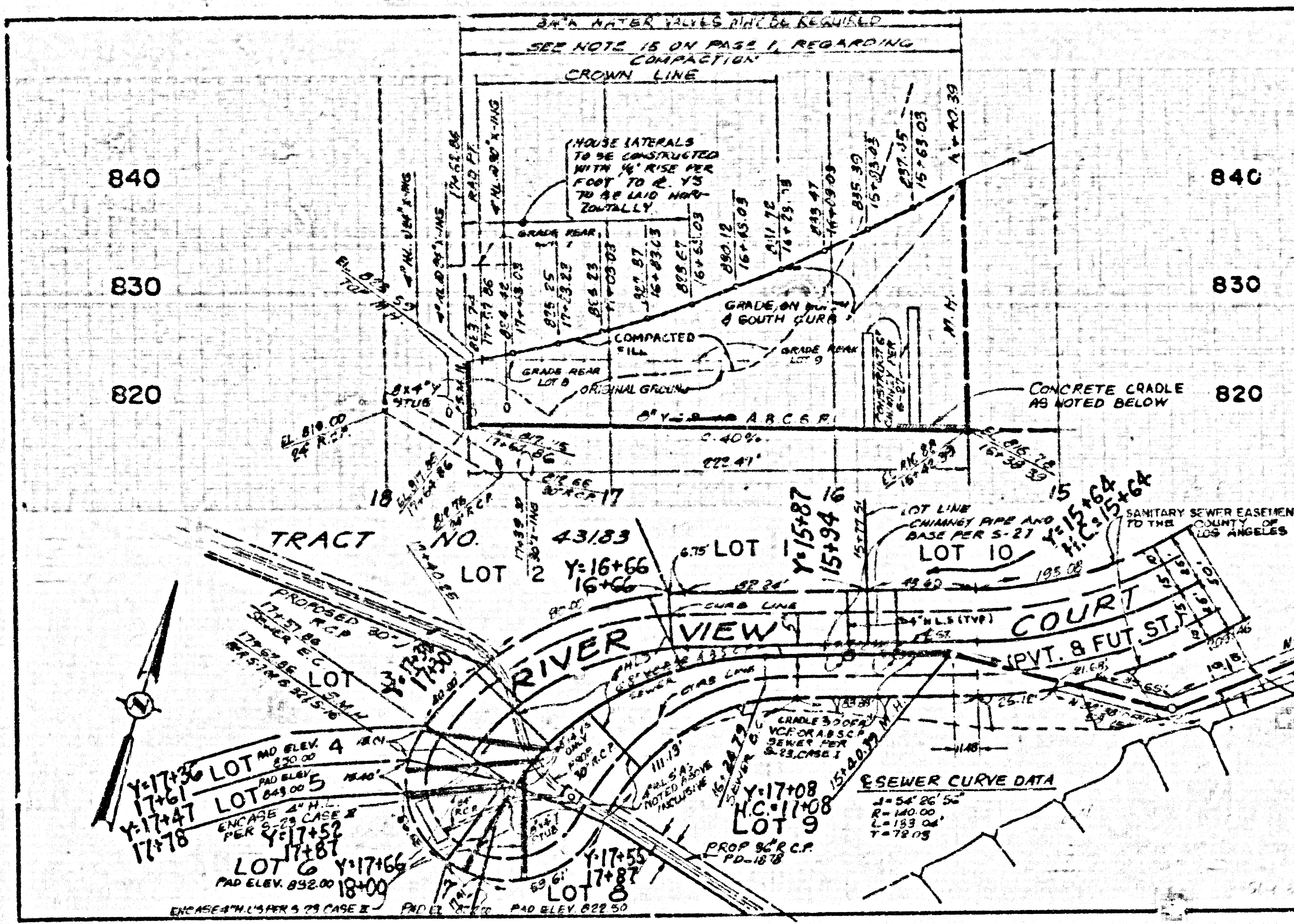
COUNTY OF LOS ANGELES, CALIFORNIA
 THOMAS A. TIDEMAN
 DIRECTOR OF PUBLIC WORKS
 APPROVED: *Dean J. H. H. H.* 12-10-89
 CHECKED: *Tommy G. G. G.* 12-10-89
 CALABASAS M.D.G. DIST. 9.1



P.C. 10803 PAGE 2
 REVIEWED BY: *Tommy G. G. G.* DATE: 12-10-89

SEE L.V.M.W.D. FOR CONNECTION CHARGES
 NO L.A. CO. ORDINANCE CHARGE FOR CONNECTIONS
 DOUBLE SCALE

E080129 E8124 ON TCA9T



P.C. 10803 PAGE 3
 REVIEWED BY: DATE 12-18-29

SEE L.V.M.W.D. FOR CONNECTION CHARGES

NO L.A. CO. ORDINANCE CHARGE FOR CONNECTIONS.

DOUBLE SCALE

PAGE