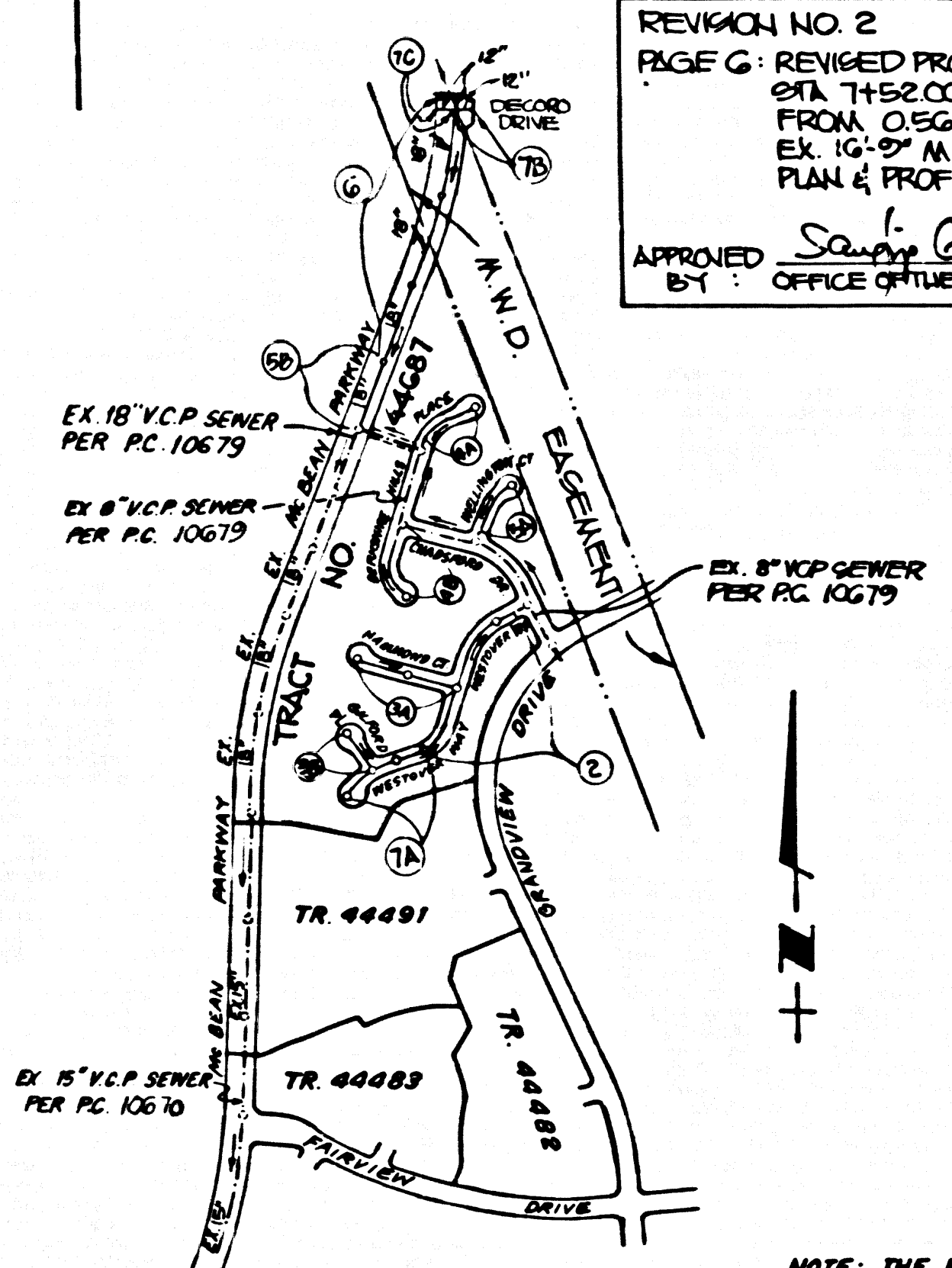


B.M. G.L. 1771 ELEV. 1124.145
 USC & GS MON. 1211. UP 35 FT. N. O.L. MAGLE
 MT. PKWY & C-25 MI. W. NEWMALL AVE. MND.
 (S 370 1953 RESET 1964)
 NEWMALL QUAD. 1983

REVISION NO. 2
 PAGE G: REVISED PROFILE OF 12" VCP SEWER BETWEEN STA. 1252.00 TO 1047.80 TO 1425.14 FROM 0.56% TO 1.67% & 1.32% TO 0.12% SLOPED EX. 12" VCP MILD PRESTRESSED CONC. PIPE C/P PLAN & PROFILE @ STA. 04-97.00

APPROVED BY: *Sandy G. Balch* 4-11-89
 OFFICE OF THE DIRECTOR OF PUBLIC WORKS, R.C.E. 3/13/89 DATE



INDEX MAP
 SCALE 1" = 600'
 TRACT NO. 44687, P.C. NO. 10834

DOUBLE SCALE

REVISION NO. 1 APRIL 2, 1989
 PAGE I: ADDED PAGE 7C TO INDEX MAP CHANGED THE PIPE SIZE FROM 12" TO 18" IN INDEX MAP.

PAGE G: UP SIZED SEWER MAIN FROM 15" TO 18" AND REVISED THE PROFILE FROM STA. 1425.00 TO 1447.23.14, ADDED PLAN AND PROFILE OF 12" SEWER MAIN FROM STA. 1412.14 TO STA. 1416.00

PAGE 7C: ADDED PLAN & PROFILE OF 12" VCP SEWER MAIN FROM STA. 0100.00 TO STA. 0186.00

APPROVED BY: *Sandy G. Balch* 4/1/89
 OFFICE OF THE DIRECTOR OF PUBLIC WORKS, R.C.E.

NO CONNECTION FOR THE DISPOSAL OF INDUSTRIAL WASTES SHALL BE MADE TO SEWERS SHOWN ON THESE DRAWINGS UNTIL A PERMIT FOR INDUSTRIAL WASTEWATER DISCHARGE HAS BEEN ISSUED BY THE SANITATION DISTRICT FOR SAID CONNECTION.

BEFORE BREAKING INTO OR CONSTRUCTION ON A COUNTY SANITATION DISTRICT SEWER AND PRIOR TO FINAL ACCEPTANCE OF THE PROJECT, SANITATION DISTRICT INSPECTOR SHALL BE NOTIFIED BY PHONE (818) 962-8605 SO THAT REQUIRED INSPECTION CAN BE MADE.

APPROVAL OF THIS PLAN BY THE LAND DEVELOPMENT DIVISION IS BASED ON A REVIEW BY AN ENGINEERING CONSULTANT UNDER CONTRACT WITH THE COUNTY OF LOS ANGELES

LOTS 102, 101, 108, 109, & 110 ARE OPEN SPACE LOTS RESTRICTED TO NO CONSTRUCTION AND WILL NOT BE SERVED BY THIS SEWER.

LOTS 54 THROUGH 59, INCLUSIVE, 71, 72, 73, 74, 89, 90 & 99 THROUGH 105, INCLUSIVE ARE SERVED BY P.C. 10679

ISSUE NO. H.L. PERMITS UNTIL OBTAIN SEWER P.C. 10679 IS BUILT & ACCEPTED FOR PUBLIC USE BY THE COUNTY OF L.A.

GENERAL NOTES:

- ELEVATIONS ARE IN FEET ABOVE U.S.C. & G.S. SEA LEVEL DATUM OF 1989
- NO REVISIONS SHALL BE MADE IN THESE PLANS WITHOUT THE APPROVAL OF THE DIRECTOR OF PUBLIC WORKS
- NO REPRESENTATIVE OF THE DEPARTMENT OF PUBLIC WORKS WILL SURVEY OR LAY OUT ANY PORTION OF THE WORK
- GRADES TO WHICH THIS IMPROVEMENT IS TO BE CONSTRUCTED ARE SHOWN ON PLANS AND PROFILES GRADE POINTS FOR TOP OF CURBS, CENTER LINE OF STREETS OR CENTER LINE OF ALLEYS ARE SHOWN BY CIRCLES OR PROFILES. ALL POINTS TO BE USED AS DESIGNATED POINTS. THE GRADE SHALL BE ESTABLISHED SO AS TO CONFORM TO A STRAIGHT LINE DRAWN BETWEEN SAID DESIGNATED POINTS
- THE PRIVATE ENGINEER SHALL FURNISH THE DEPARTMENT OF PUBLIC WORKS WITH GRADE SHEETS AND STATIONING FOR ALL HOUSE LATERALS AND "Y" OR "T" BRANCHES AND PROVIDE STAKES FOR THEM AT THEIR PROPER LOCATIONS WITH STATIONING PLAINLY MARKED. ALL HOUSE LATERALS SHALL BE CONSTRUCTED TO A STRAIGHT ALIGNMENT AT RIGHT ANGLES FROM THE MAIN LINE SEWER EXCEPT AS SHOWN ON THE PLANS. HOUSE LATERALS FROM CHIMNEYS SHALL NOT HAVE AN ANGLE OF LESS THAN 45° WITH THE MAIN LINE SEWER. ANY CHANGE IN ALIGNMENT SHALL BE REQUESTED IN WRITING BY THE PRIVATE ENGINEER
- THE PRIVATE ENGINEER SHALL FURNISH THE HOUSE LATERAL DEPTH AT THE PROPERTY LINE BELOW THE TOP CURB ELEVATION FOR EACH HOUSE LATERAL ON THE GRADE SHEET
- BEFORE WORK CAN BE STARTED, THE CONTRACTOR MUST OBTAIN A PERMIT TO EXCAVATE IN COUNTY STREETS FROM THE GRAD. ENGINEER OF THE LOS ANGELES DEPARTMENT OF PUBLIC WORKS, PHONE OFFICE NO. 6-1234 AND PAY FEE TO THE DIRECTOR OF PUBLIC WORKS, 700 S. FRESNO AVENUE, ALHAMBRA, CA. 91803, \$100.00 TO COVER THE COST OF CONSTRUCTION INSPECTION AND RECORD PLANS
- IF WORK IS TO BE DONE IN A STATE HIGHWAY OR A RIGHT MUST BE OBTAINED FROM THE STATE OF CALIFORNIA DIVISION OF HIGHWAYS, 120 SOUTH SPRING STREET, LOS ANGELES, CALIFORNIA
- APPROVAL OF THIS PLAN BY THE COUNTY OF LOS ANGELES DOES NOT CONSTITUTE A REPRESENTATION AS TO THE ACCURACY OF THE LOCATION OF OR THE EXISTENCE OR NON-EXISTENCE OF ANY UNDERGROUND UTILITY PIPE OR STRUCTURE WITHIN THE LIMITS OF THIS PROJECT. THIS NOTICE APPLIES TO ALL PHASES
- REFER TO SECTION 7.18.1 OF THE STANDARD SPECIFICATIONS REGARDING SAFETY ORDER
- PRIOR TO THE ISSUANCE OF THE REQUIRED SEWER CONSTRUCTION PERMIT, THE CONTRACTOR SHALL OBTAIN AND FILE WITH THE DEPARTMENT OF PUBLIC WORKS COPIES OF A PERMIT TO EXCAVATE IN COUNTY STREETS FROM THE GRAD. ENGINEER AT THE DEPARTMENT OF PUBLIC WORKS, A PERMIT FOR EXCAVATION AND TRENCHES FROM THE STATE OF CALIFORNIA, DIVISION OF INDUSTRIAL SAFETY AND CERTIFICATION OF WORKERS COMPENSATION INSURANCE WITH THE DEPARTMENT OF PUBLIC WORKS, 700 S. FRESNO AVENUE, ALHAMBRA, CA. 91803 \$75.00 PER PLAN.

CONSTRUCTION NOTES:

- WORK SHALL BE CONSTRUCTED ACCORDING TO THE STANDARD SPECIFICATIONS FOR PUBLIC WORKS CONSTRUCTION 1988 EDITION AND PART OF THE 1988 SPECIAL PROVISIONS FOR THE CONSTRUCTION OF SANITARY SEWERS DATED MAY, 1978.
- THE CONTRACTOR SHALL NOTIFY THE CONSTRUCTION DIVISION BY TELEPHONE (818) 962-8605 AT LEAST TWENTY-FOUR HOURS BEFORE STARTING ANY WORK UNDER THIS CONTRACT.
- HOUSE LATERALS TO BE CONSTRUCTED TO INVERT AT PROPERTY LINE 8 FEET BELOW CURB GRADE EXCEPT AS NOTED
- "Y" OR "T" BRANCHES MAY BE USED FOR CONNECTIONS TO MAIN LINE SEWERS EXCEPT AS NOTED
- ALL STRUCTURES SHALL BE OTHER THAN CONCRETE PER 5.01 OR PRECAST CONCRETE PER 5.02, PER 5.03, EXCEPT AS NOTED
- PROVIDE STAKES ON THE PROPERTY LINE OR PROPERTY LINES PRODUCED AT RIGHT ANGLES TO THE SEWER LINE AT THE CENTER LINE OF EACH MANHOLE
- MANHOLE TOPS IN UNIMPROVED RIGHTS OF WAY TO BE SIX INCHES ABOVE FINISHED GRADE
- WITHEED CLAY PIPE JOINTS SHALL BE TYPE "D" OR "E" PER STANDARD SPECIFICATIONS SECTION 208.2
- IF AS FEASIBLE WITHIN THREE FEET OF THE SEWER THE SEWER SHALL BE ENCASED PER 5.03 CASE II TWO FEET ON EACH SIDE FROM THE POINT OF INTERFERENCE
- IF DURING THE COURSE OF CONSTRUCTION IT IS DETERMINED THAT THERE IS LESS THAN FOUR FEET OF COVER OVER THE TOP OF A MAIN LINE OR HOUSE LATERAL VCP SEWER WHICH IS NOT INDICATED ON THE PLANS, THE PIPE SHALL BE ENCASED PER 5.03 CASE II UNLESS OTHERWISE APPROVED BY THE DIRECTOR OF PUBLIC WORKS
- ALL JOINTS IN THIRTEEN CAST IRON PIPE AND WITHEED CLAY PIPE SHALL BE MADE WITH A RUBBER SLEEVE JOINT, TYPE "C" OR "D" WITH BUSHING IF NECESSARY PER SECTION 208.1 OF THE STANDARD SPECIFICATIONS AND SPECIAL PROVISIONS
- SEWERS TO BE TESTED FOR LEAKAGE PER SECTION 208.14 OF THE STANDARD SPECIFICATIONS AND SPECIAL PROVISIONS
- RESURFACE ALL TRENCHES WITHIN PAVED AREAS TO MEET LOS ANGELES COUNTY PUBLIC WORKS OF CALIFORNIA STATE HIGHWAY REQUIREMENTS IN ACCORDANCE WITH PERMITS
- FULL COMPLIANCE WITH SECTION 208.13 OF THE STANDARD SPECIFICATIONS WILL BE REQUIRED FOR BACKFILL OF STREETS. CERTIFICATION OF BACKFILL COMPACTION AND SAND EQUIVALENTS BY A QUALIFIED REGISTERED LABORATORY SHALL BE PROVIDED BY THE PERMITTEE PRIOR TO THE ISSUANCE OF A CERTIFICATE OF PARTIAL ACCEPTANCE
- SPECIAL BACKFILL IN BASEMENT CONSTRUCTION IN BACKFILL TRENCHES AND REPLACE OTHER EARTH SO AS TO ACHIEVE THE NATURAL OR FINISHED GRADES AND SLOPES SHOWN ON THE GRADING PLAN APPROVED FOR THIS DEVELOPMENT BY THE LAND DEVELOPMENT DIVISION. IF ALL BACKFILL AND REPLACE SHALL BE COMPACTED TO A MINIMUM OF 90% OF MAXIMUM DENSITY PER A.S.T.M. METHOD OF TEST D998 AT 17% MOISTURE. ACCEPTABLE CERTIFICATION OF SUCH COMPACTION SHALL BE SUBMITTED TO THE CONSTRUCTION DIVISION, PUBLIC WORKS DEPT.

SANITARY SEWERS

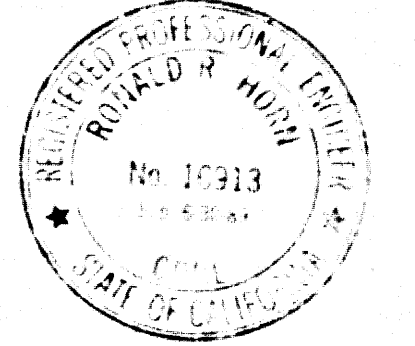
TO BE CONSTRUCTED IN

TRACT NO. 44687

PRIVATE CONTRACT NO. 10834

INDEX: A-47

4 SHEETS; 7 PAGES



SCALE: VERT. 1" = 4' HORIZ. 1" = 40' MARCH 16, 1988

PREPARED IN THE OFFICES OF
 SIKAND ENGINEERING ASSOCIATES
 15230 BURBANK BLVD. BURBANK, CALIF. 91111 (818) 787-8550

BY: *Charles W. Carry*
 REG. C.E. NO. 52887

THE FOLLOWING LATEST REVISED STANDARD PLANS ON FILE IN THE OFFICE OF THE DEPARTMENT OF PUBLIC WORKS SHALL APPLY IN THE CONSTRUCTION OF THIS PROJECT:

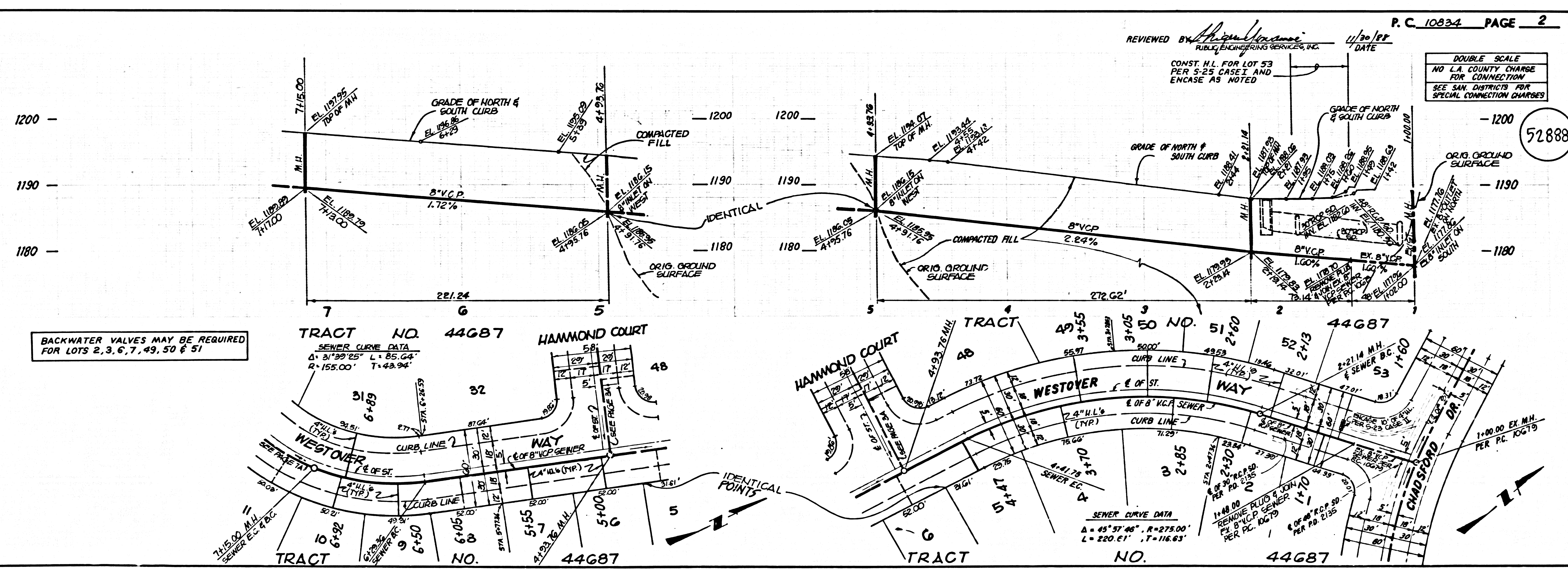
LEGEND	5-1
MINIMUM PUBLIC SAFETY REQUIREMENTS	5-2
BRICK SETBACK MANHOLE	5-3
STANDARD MANHOLE STEP	5-7
SECONDARY FOR SEWER PIPE	5-9
CRACKING AND ENCASUREMENT	5-23
WYE OR TEE SUPPORT	5-26
ALLOWABLE TRENCH WIDTHS	5-28
LOCKING MANHOLE FRAME AND COVER	5-33
NON-REINFORCED PRECAST CONCRETE SEWER MANHOLE	5-36
SPECIAL HOUSE LATERALS	5-38

COUNTY OF LOS ANGELES, CALIFORNIA
 THOMAS A. IDEMANNSON
 DIRECTOR OF PUBLIC WORKS

APPROVED *Dean E. Holman* 12-16-88 (DATE)
 OFFICE ENGINEER

CHECKED *Alvin J. Vranica* 11/30/88 (DATE)
 PUBLIC ENGINEERING SERVICES, INC. (DATE)

SANTA CLARITA VALLEY, BLDG. DIST. 82



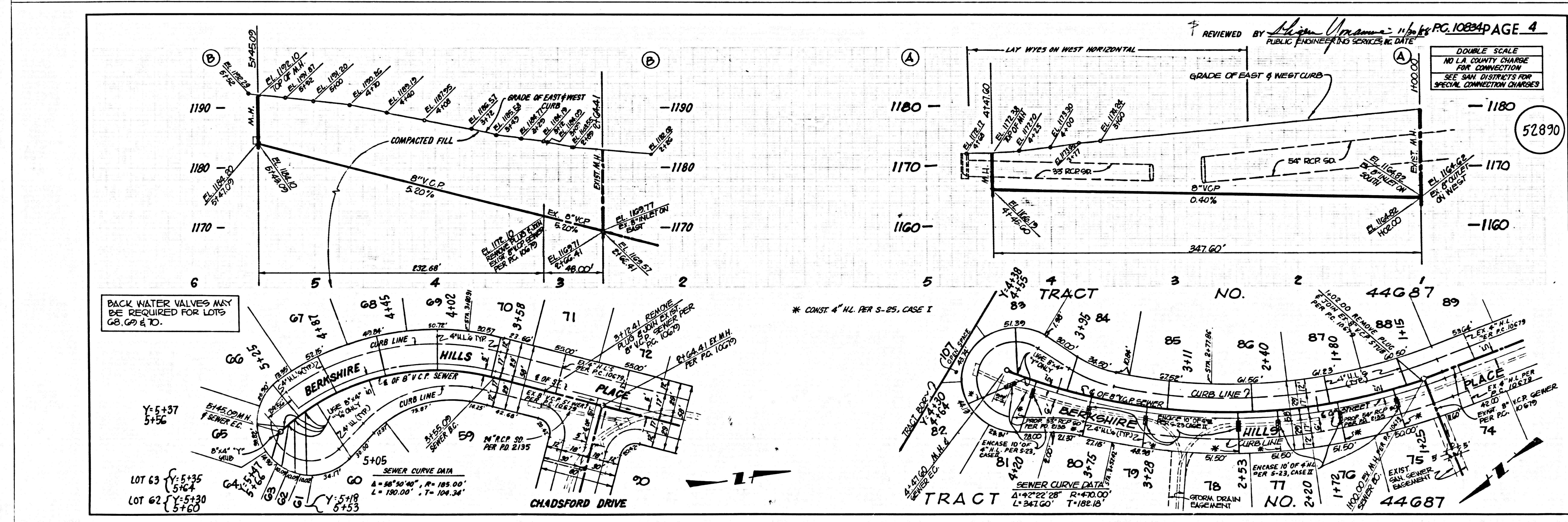
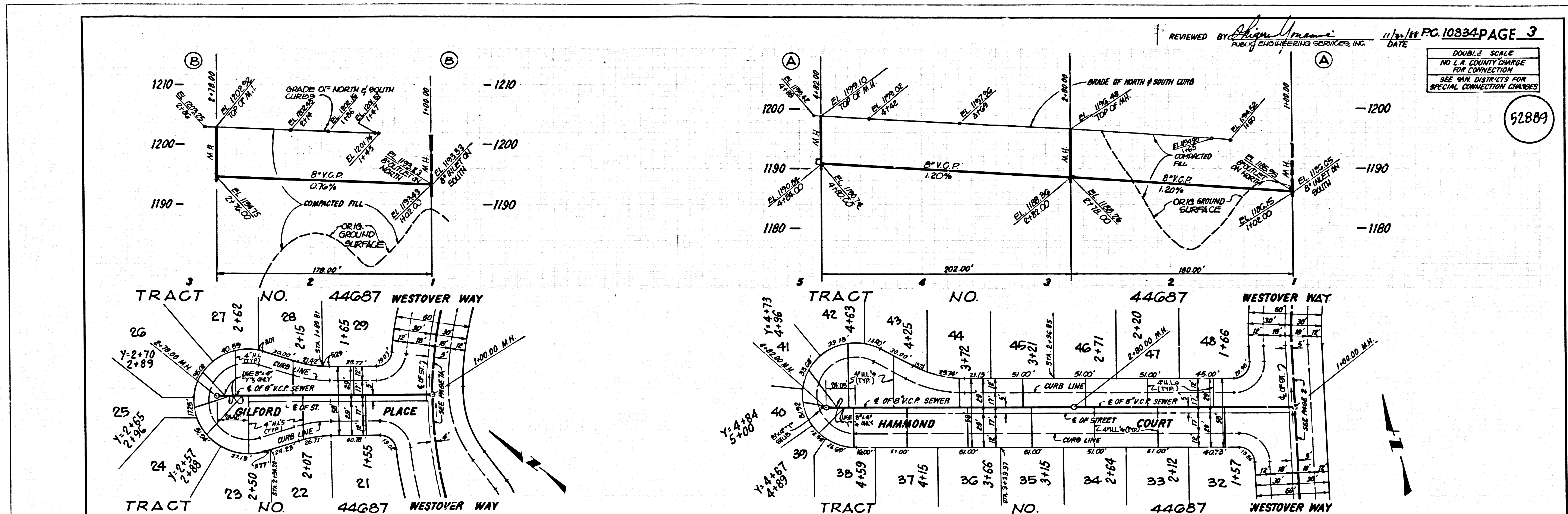
BACKWATER VALVES MAY BE REQUIRED FOR LOTS 2, 3, 6, 7, 49, 50 & 51

TRACT NO. 44687
 SEWER CURVE DATA
 Δ = 31° 39' 25" L = 85.64'
 Δ = 155.00' T = 49.94'

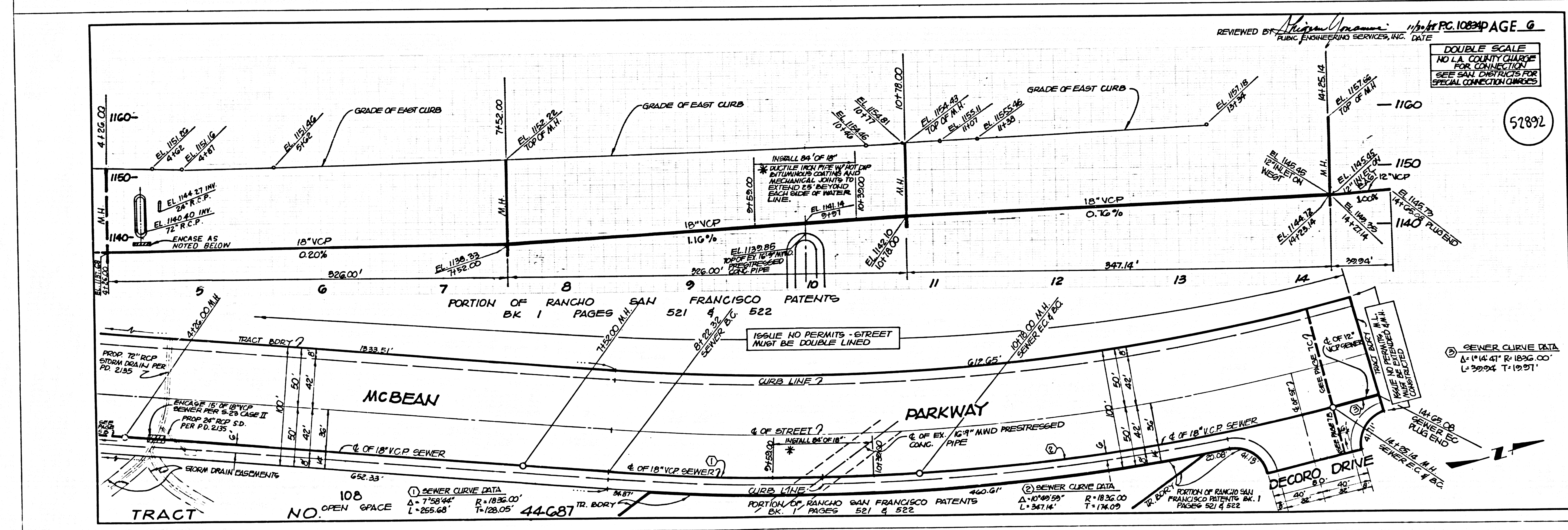
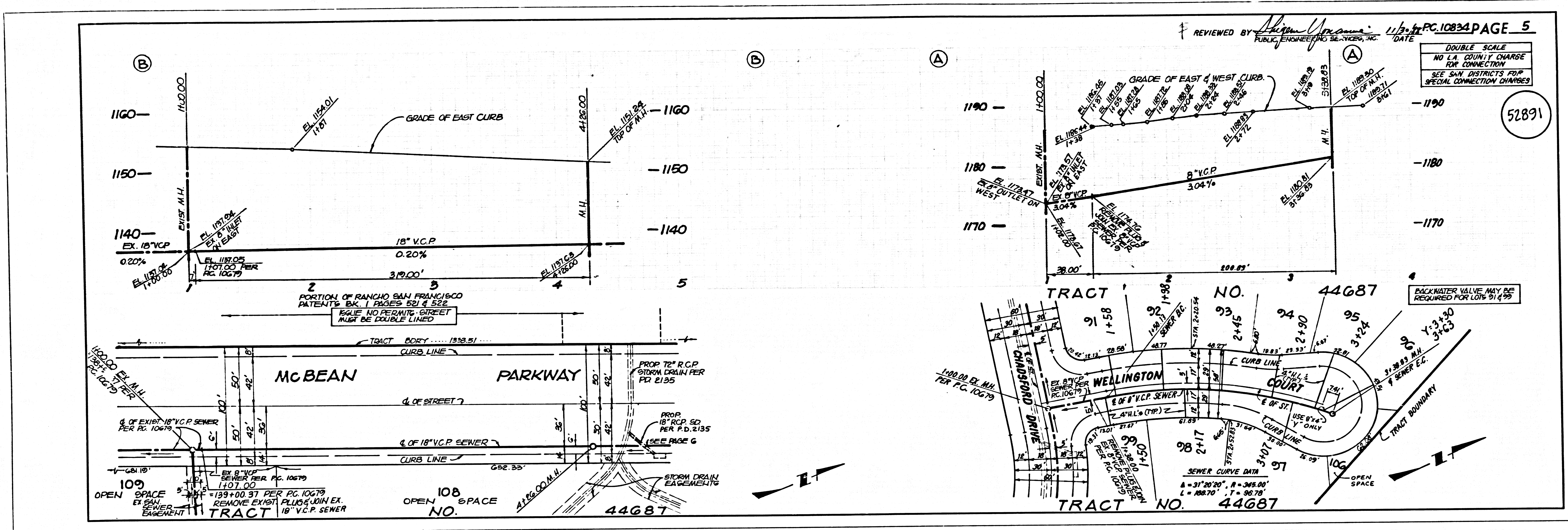
TRACT NO. 44687
 SEWER CURVE DATA
 Δ = 45° 57' 46" R = 275.00'
 L = 220.61' T = 116.63'

48801 29

18888 ON TRACT



5
 TRACT 39 1834D ON 12A9T



PC 10834

