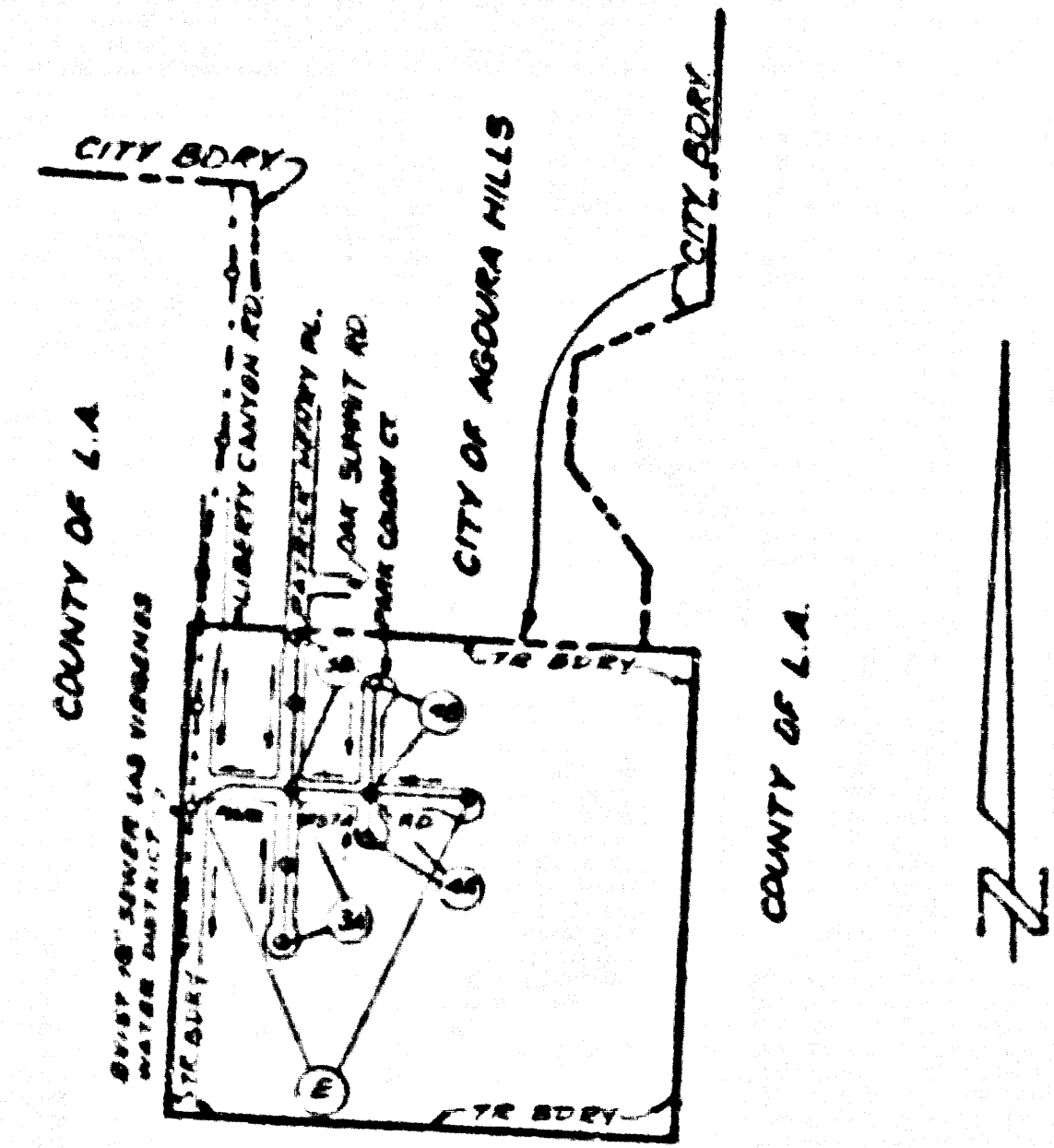


B.M. CY 7547 ELEV. 817.147
 ST. HWY MON IN WELL JOIN DN
 ON CIL LIBERTY CANYON RD
 UNDERCROSSING 80 FT W/ WESTBOUND
 ON-OFF RAMP VENTURA FWY
 MALIBU QUAD. 1980



INDEX MAP
 TRACT NO. 34-274
 P.C. 10327
 SCALE: 1" = 600'
 NOTE: NUMBERS IN CIRCLES
 INDICATE PAGE NUMBERS

DOUBLE SCALE

PRIVATE ENGINEER'S NOTICE TO CONTRACTOR
 THE EXISTENCE AND LOCATION OF ANY UNDERGROUND
 UTILITY PIPES OR STRUCTURE SHOWN ON THESE PLANS
 ARE OBTAINED BY A SEARCH OF THE AVAILABLE RECORDS
 TO THE BEST OF OUR KNOWLEDGE THERE ARE NO EXISTING
 UTILITIES EXCEPT AS SHOWN ON THIS MAP. THE CONTRACTOR
 IS REQUIRED TO TAKE PRECAUTIONARY MEASURES
 TO PROTECT THE UTILITY LINES AND ANY OTHER LINES
 NOT OF RECORD OR NOT SHOWN ON THIS DRAWING.
 PRIOR TO EXCAVATION THE CONTRACTOR SHALL CALL TOLL
 FREE 800-422-4133 TO VERIFY THE UNDERGROUND
 LOCATION OF GAS AND TELEPHONE LINES.

Thomas K. Juhn
 THOMAS K. JUHN R.C.E. NO. 43312 3/31/68
 R.P.R. 3-31-91 DATE

APPROVAL OF THIS PLAN BY THE LAND DEVELOPMENT DIVISION
 IS BASED ON A REVIEW BY AN ENGINEERING CONSULTANT UNDER
 CONTRACT WITH THE COUNTY OF LOS ANGELES.

CONSTRUCTION NOTES CONT.
 NO CONTRACT SHALL BE STARTED AT 08:30-1207 AT LEAST
 24 HOURS BEFORE STARTING WORK ON THE INTO L.I.M.W.D.
 TRUCK SEWER.

REVISION NO. 1 DATE 9-25-88
 CHANGE 8" VCP PIPE TO 8" D.I.P. PIPE FROM STA 0+89.08
 TO STA 0+91.38, DELETE 90" SEWER ENCASMENT AT STA 1+50
 AND ADD UNDERDRAIN CROSSING AT STA 1+82
 APPROVED *Sandy G. Hill*
 DEPARTMENT OF PUBLIC WORKS/RE NO. 33134

UNAUTHORIZED CHANGES & USES. The engineer preparing
 these plans will not be responsible for, or liable for, unauthorized
 changes to or uses of these plans. All changes to the plans must be
 in writing and must be approved by the preparer of these plans.

LOTS 38, 39, 40 ARE OPEN SPACE LOTS RESTRICTED TO NO CONSTRUCTION
 AND WILL NOT BE SERVED BY THIS SEWER.

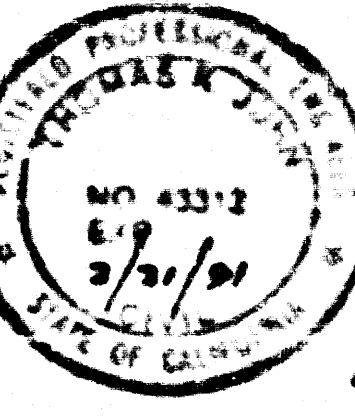
GENERAL NOTES:

- ELEVATIONS ARE 16 FEET ABOVE U.S.C. & G.S. 1" LEVEL DATUM OF 1929.
- NO REVISIONS SHALL BE MADE IN THESE PLANS WITHOUT THE APPROVAL OF THE DIRECTOR OF PUBLIC WORKS.
- NO REPRESENTATIVE OF THE DEPARTMENT OF PUBLIC WORKS SHALL SURVEY OR LAY OUT ANY PORTION OF THE WORK.
- GRADES TO WHICH THIS IS SUBJECT TO BE CONSTRUCTED ARE SHOWN ON THESE PLANS AND PROPOSED GRADE POINTS FOR TOP OF CURBS, CENTERLINE OF STREETS OR CENTERLINE OF ALL LINES SHOWN IN CIRCLES SHALL INDICATE BY AN "X" FROM THE POINT TO THE POINTS. THE SPACES SHALL BE 10 FEET OR MORE TO A STRAIGHT LINE DRAWING SET BETWEEN SAG-DIP POINTS.
- THE PRIVATE ENGINEER SHALL FURNISH THE DEPARTMENT OF PUBLIC WORKS WITH GRADE SHEETS AND STATIONINGS FOR ALL HOUSE LATERALS AND 12" OR 18" BRANCHES AND SHALL PROVIDE STAKES FOR TOP OF AT THE HOUSE LOCATIONS WITH 12" OR 18" CONCRETE PLATES AS SHOWN ON THE PLANS. HOUSE LATERALS SHALL BE CONSTRUCTED AT RIGHT ANGLES TO THE MAIN LINE UNLESS OTHERWISE NOTED. ANY CHANGE IN ALIGNMENT SHALL BE INDICATED BY THE PRIVATE ENGINEER.
- THE PRIVATE ENGINEER SHALL FURNISH THE HOUSE LATERAL DEPTH AT THE PROPERTY LINE AND ON THE TOP OF CURB ELEVATION FOR EACH HOUSE LATERAL ON THE GRADE SHEET.
- WORK SHALL BE STARTED WHEN THE CONTRACTOR OBTAINS A PERMIT TO EXCAVATE IN COUNTY STREETS FROM THE CONSTRUCTION DIVISION OF THE COUNTY OF LOS ANGELES. THE CONTRACTOR SHALL BE RESPONSIBLE FOR THE COST OF CONSTRUCTION INSURANCE AND RECORD PLANS.
- WORK IS TO BE DONE IN STATE HIGHWAY 1 PERMIT MUST BE OBTAINED FROM THE STATE OF CALIFORNIA DIVISION OF HIGHWAYS, 120 SOUTH SPRING STREET, LOS ANGELES, CALIFORNIA.
- APPROVAL OF THIS PLAN BY THE COUNTY OF LOS ANGELES DOES NOT CONSTITUTE A REPRESENTATION AS TO THE ACCURACY OF THE LOCATION OF OR THE EXISTENCE OR NON-EXISTENCE OF ANY UNDERGROUND UTILITY PIPES OR STRUCTURE WITHIN THE LIMITS OF THIS PROJECT. THIS NOTE APPLIES TO ALL PAGES.
- REFER TO SECTION 7.10.4.1 OF THE STANDARD SPECIFICATIONS REGARDING SAFETY ORDERS.
- IN ADDITION TO THE ISSUANCE OF THE REQUIRED CONSTRUCTION PERMIT, THE CONTRACTOR SHALL OBTAIN AND FILE WITH THE DEPARTMENT OF PUBLIC WORKS A PERMIT FOR EXCAVATIONS AND TRENCHES FROM THE STATE OF CALIFORNIA DIVISION OF INDUSTRIAL SAFETY AND CERTIFICATE OF WORKERS COMPENSATION INSURANCE WITH THE DEPARTMENT OF PUBLIC WORKS, 800 S. GARDENWAY, SUITE 100, ANAHEIM, CALIFORNIA 92810. THE CONTRACTOR SHALL BE NOTIFIED 30 DAYS PRIOR TO CANCELLATION OF POLICY.

CONSTRUCTION NOTES:

- WORK SHALL BE CONSTRUCTED ACCORDING TO THE STANDARD SPECIFICATIONS FOR PUBLIC WORKS CONSTRUCTION 1988 EDITION WITH THE SUPPLEMENT 15.2.2.2. THE CONTRACTOR SHALL BE RESPONSIBLE FOR THE COST OF CONSTRUCTION INSURANCE AND RECORD PLANS.
- THE CONTRACTOR SHALL NOTIFY THE CONSTRUCTION DIVISION BY TELEPHONE AT LEAST TWENTY-FOUR HOURS BEFORE STARTING ANY WORK UNDER THIS CONTRACT.
- HOUSE LATERALS TO BE CONSTRUCTED WITH INVERTS AT PROPERTY LINE 1 FEET BELOW CURB GRADE EXCEPT AS NOTED.
- 8" OR 12" BRANCHES MAY BE USED FOR CONNECTIONS TO MAINLINE SEWERS EXCEPT AS NOTED.
- ALL STRUCTURES SHALL BE 6" MIN. BRICK MANHOLES PER 9" OR 12" PRECAST CONCRETE MANHOLES PER 9" EXCEPT AS NOTED.
- PROVIDE STAKES ON THE PROPERTY LINE OR PROPERTY LINES PRODUCED AT RIGHT ANGLES TO THE SEWER LINE AT THE CENTERLINE OF EACH MANHOLE.
- MANHOLE TOPS IN UNIMPROVED AREAS TO BE SIX INCHES ABOVE FINISHED GRADE.
- IF A POWER POLE IS WITHIN THREE FEET OF THE SEWER THE SEWER SHALL BE ENCASED PER 9.2.2. CASE II TWO FEET ON EACH SIDE FROM THE POINT OF INTERFERENCE.
- IF DURING THE COURSE OF CONSTRUCTION IT IS DETERMINED THAT THERE IS LESS THAN FOUR FEET OF COVER OVER THE TOP OF A MAINLINE OR HOUSE LATERAL V.C.P. SEWER WHICH IS NOT INDICATED ON THE PLANS, THE PIPE SHALL BE ENCASED PER 9.2.2. CASE II UNLESS OTHERWISE APPROVED BY THE DIRECTOR OF PUBLIC WORKS.
- ALL JOINTS BETWEEN CAST IRON PIPE AND WITHELD CLAY PIPE SHALL BE MADE WITH A RUBBER SLEEVE JOINT TYPE "C" OR "D" WITHIN 10 FEET OF THE PROPERTY LINE PER STANDARD SPECIFICATION SECTION 200-2.
- SEWERS TO BE TESTED FOR LEAKAGE PER SECTION 200-1.4 OF THE STANDARD SPECIFICATIONS AND SPECIAL PROVISIONS.
- RESURFACE ALL TRENCHES WITHIN 10 FEET OF THE STANDARD SPECIFICATIONS AND SPECIAL PROVISIONS.
- FULL COMPLIANCE WITH SECTION 200-1.4 OF THE STANDARD SPECIFICATIONS WILL BE REQUIRED FOR BACKFILL IN STREETS. CERTIFICATION OF BACKFILL COMPLETION AND SAND EQUIVALENTS BY A QUALIFIED REGISTERED TEST LABORATORY SHALL BE PROVIDED BY THE PERMITTEE PRIOR TO THE ISSUANCE OF A CERTIFICATE OF PARTIAL ACCEPTANCE.
- SPECIAL BACKFILL IN BASEMENT CONSTRUCTION AS BACKFILL TRENCHES AND IN REPAIRS OTHER THAN PER 9.2.2 TO ACHIEVE THE NATURAL OR FINISHED GRADE AND SLOPE SHOWN ON THE GRADING PLANS APPROVED BY THE LAND DEVELOPMENT DIVISION OF THE COUNTY OF LOS ANGELES SHALL BE SUBMITTED TO A MINIMUM OF 50% OF MAXIMUM DENSITY PER ASTM D 1557 METHOD OF TEST OR AS INDICATED. ACCEPTABLE CERTIFICATION OF SUCH COMPLETION SHALL BE SUBMITTED TO THE CONSTRUCTION DIVISION, PUBLIC WORKS DEPARTMENT.

SANITARY SEWERS
 TO BE CONSTRUCTED IN
 TRACT NO. 34274



PRIVATE CONTRACT NO. 10827
 INDEX C-111
 2 SHEETS, 4 PAGES
 52850

SCALE: VERT. 1" = 8'
 HORIZ. 1" = 60'
 FEBRUARY, 1968
 PREPARED IN THE OFFICES OF
 JSA
 24013 VENTURA BLVD. CALABASAS CA 91302
 BY *Thomas K. Juhn*
 REG. CE. NO. 43312
 THOMAS K. JUHN R.P.R. 3-31-

THE FOLLOWING TABLE SETS FORTH STANDARD PRACTICES ON FILE IN THE OFFICE OF THE DEPARTMENT OF PUBLIC WORKS WHICH APPLY TO THE CONSTRUCTION OF THIS PROJECT.

LESS NO.	9.1
MINIMUM PUBLIC SAFETY REQUIREMENTS	9.2
BRICK REPAIR MANHOLE	9.3
STANDARD MANHOLE STEP	9.4
BEDDING FOR SEWER PIPE	9.5
CADDLING AND ENCASMENT	9.6
WPI ON THE SURFACE	9.7
ALLOWABLE TRENCH WIDTHS	9.8
LOCKING MANHOLE FRAME AND COVER	9.9
NON-REINFORCED PRECAST CONCRETE MANHOLES	9.10
SPECIAL HOUSE LATERALS	9.11

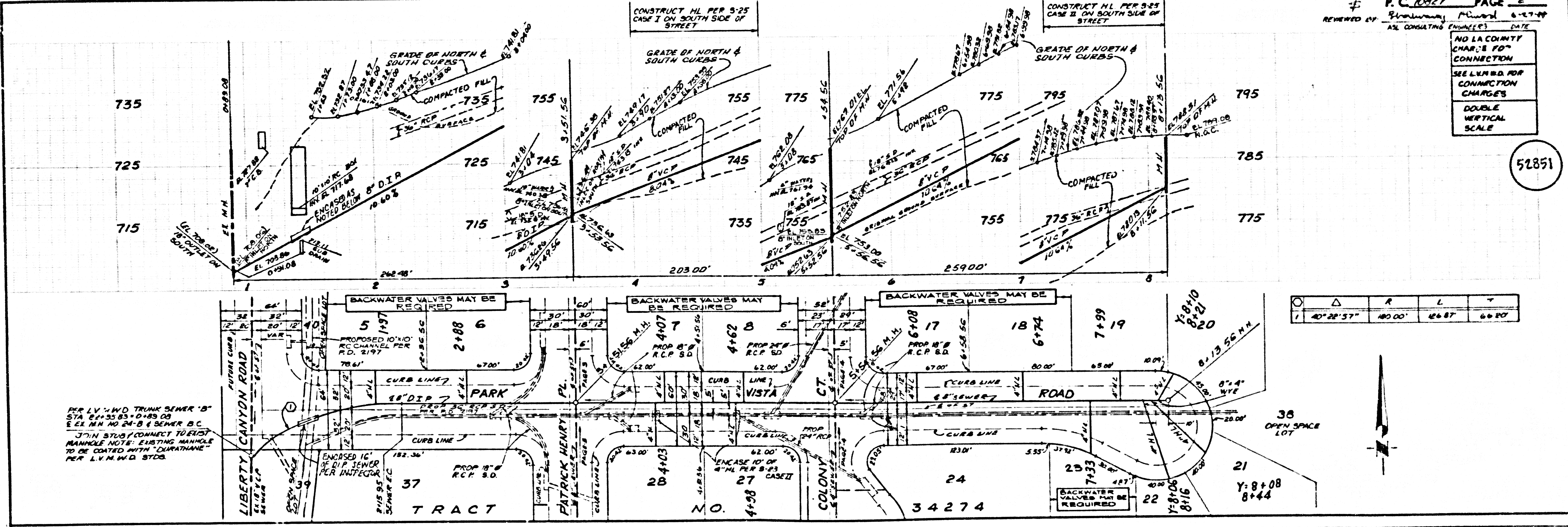
COUNTY OF LOS ANGELES, CALIFORNIA

THOMAS A. TIDEMANSON
 DIRECTOR OF PUBLIC WORKS
 LAS VIRGENES MUNICIPAL WATER DISTRICT

APPROVED *Dean Elletts* 9/16/80
 APPROVED *John S. Stiles* 3/31/88
 H.W. STILES, CHIEF ENGINEER

REVIEWED *Engineering March 6-27-88*
 ALL CONSULTING ENGINEERS MUST
 REG. CE. NO. 3-31-88

CALABASAS BLDG. DIST. 7.1



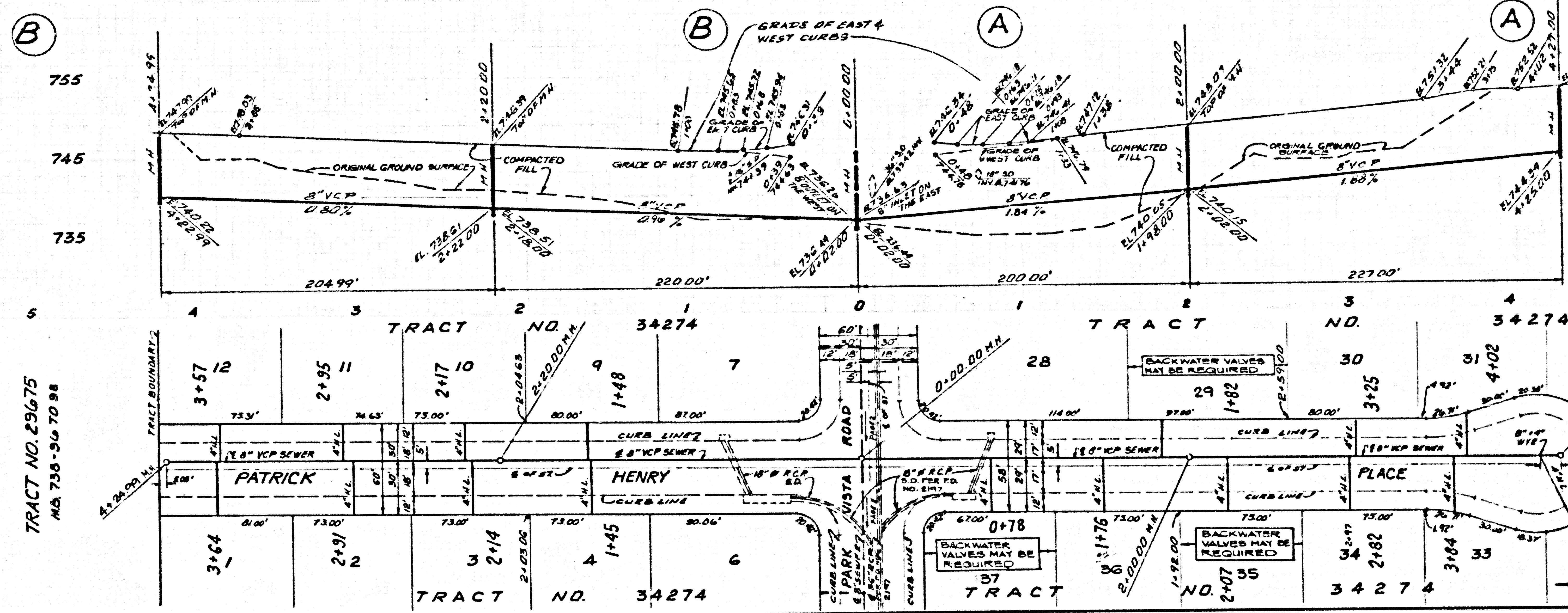
NO LA COUNTY
 CHARGE FOR
 CONNECTION
 SEE L.V.R. NO. 24-B FOR
 CONSTRUCTION
 CHARGES
 DOUBLE
 VERTICAL
 SCALE

Symbol	Symbol	R	L	T	
○	△	40° 22' 57"	40.00'	46.87'	66.00'

NO LA COUNTY CHARGE FOR CONNECTIONS

SEE L.V.M.W.D. FOR CONNECTION CHARGES

DOUBLE VERTICAL SCALE



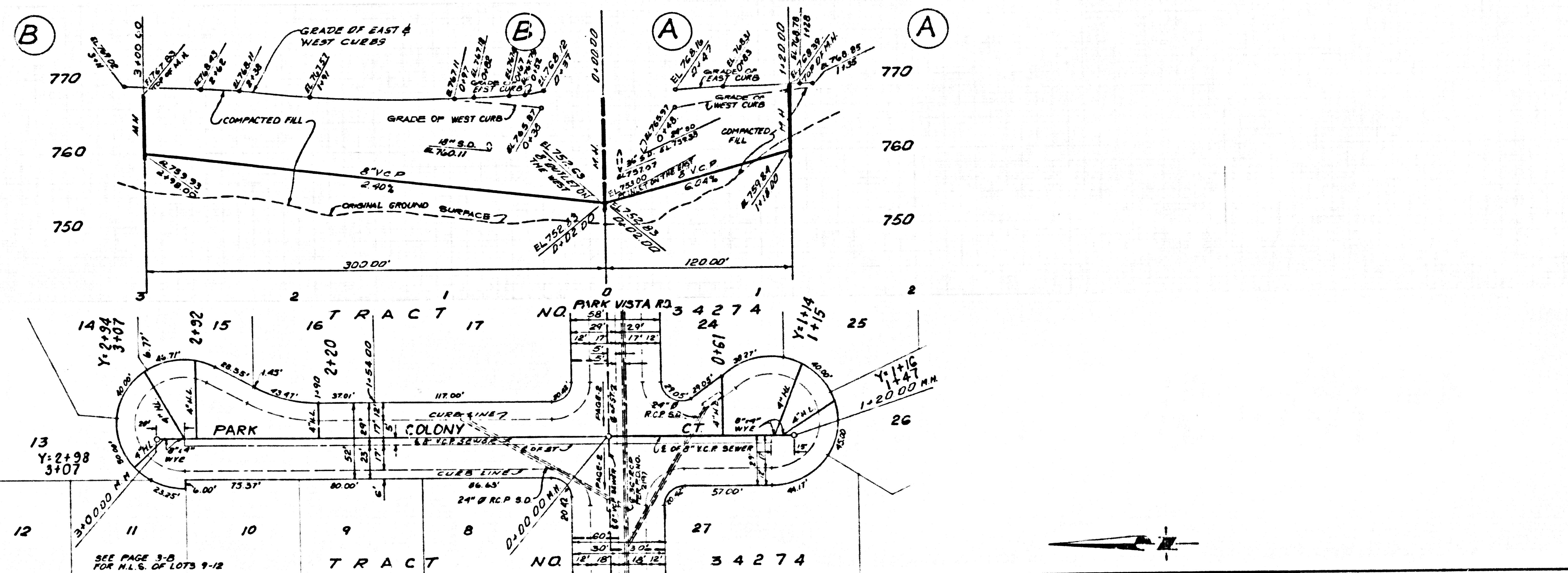
52852

5300 39 4386 04 13A07

NO LA COUNTY CHARGE FOR CONNECTIONS

SEE L.V.M.W.D. FOR CONNECTION CHARGES

DOUBLE VERTICAL SCALE



52853