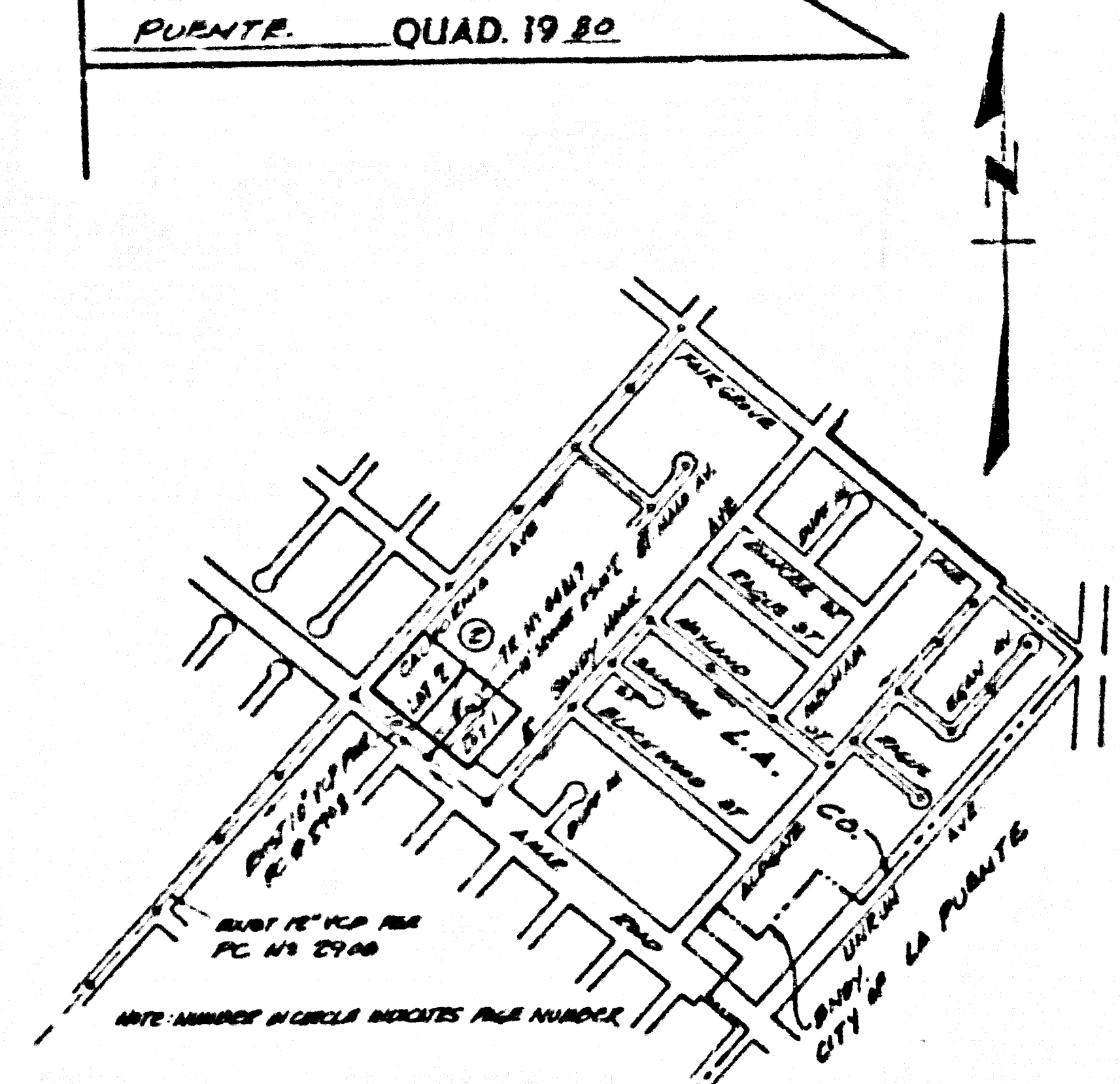


B.M. CG 1102 ELEV. 322.663
 1/2" = 1' SCALE
 3/4" = 1' SCALE
 1" = 1' SCALE
 1 1/2" = 1' SCALE
 2" = 1' SCALE
 3" = 1' SCALE
 4" = 1' SCALE
 5" = 1' SCALE
 6" = 1' SCALE
 7" = 1' SCALE
 8" = 1' SCALE
 9" = 1' SCALE
 10" = 1' SCALE
 11" = 1' SCALE
 12" = 1' SCALE
 13" = 1' SCALE
 14" = 1' SCALE
 15" = 1' SCALE
 16" = 1' SCALE
 17" = 1' SCALE
 18" = 1' SCALE
 19" = 1' SCALE
 20" = 1' SCALE
 21" = 1' SCALE
 22" = 1' SCALE
 23" = 1' SCALE
 24" = 1' SCALE
 25" = 1' SCALE
 26" = 1' SCALE
 27" = 1' SCALE
 28" = 1' SCALE
 29" = 1' SCALE
 30" = 1' SCALE
 31" = 1' SCALE
 32" = 1' SCALE
 33" = 1' SCALE
 34" = 1' SCALE
 35" = 1' SCALE
 36" = 1' SCALE
 37" = 1' SCALE
 38" = 1' SCALE
 39" = 1' SCALE
 40" = 1' SCALE
 41" = 1' SCALE
 42" = 1' SCALE
 43" = 1' SCALE
 44" = 1' SCALE
 45" = 1' SCALE
 46" = 1' SCALE
 47" = 1' SCALE
 48" = 1' SCALE
 49" = 1' SCALE
 50" = 1' SCALE
 51" = 1' SCALE
 52" = 1' SCALE
 53" = 1' SCALE
 54" = 1' SCALE
 55" = 1' SCALE
 56" = 1' SCALE
 57" = 1' SCALE
 58" = 1' SCALE
 59" = 1' SCALE
 60" = 1' SCALE
 61" = 1' SCALE
 62" = 1' SCALE
 63" = 1' SCALE
 64" = 1' SCALE
 65" = 1' SCALE
 66" = 1' SCALE
 67" = 1' SCALE
 68" = 1' SCALE
 69" = 1' SCALE
 70" = 1' SCALE
 71" = 1' SCALE
 72" = 1' SCALE
 73" = 1' SCALE
 74" = 1' SCALE
 75" = 1' SCALE
 76" = 1' SCALE
 77" = 1' SCALE
 78" = 1' SCALE
 79" = 1' SCALE
 80" = 1' SCALE
 81" = 1' SCALE
 82" = 1' SCALE
 83" = 1' SCALE
 84" = 1' SCALE
 85" = 1' SCALE
 86" = 1' SCALE
 87" = 1' SCALE
 88" = 1' SCALE
 89" = 1' SCALE
 90" = 1' SCALE
 91" = 1' SCALE
 92" = 1' SCALE
 93" = 1' SCALE
 94" = 1' SCALE
 95" = 1' SCALE
 96" = 1' SCALE
 97" = 1' SCALE
 98" = 1' SCALE
 99" = 1' SCALE
 100" = 1' SCALE



INDEX MAP
 PC. 10837 TR. NO. 44817
 SCALE 1" = 600'

NO CONNECTION FOR THE DISPOSAL OF INDUSTRIAL WASTES SHALL BE MADE TO SEWERS SHOWN ON THESE DRAWINGS UNLESS A PERMIT FOR INDUSTRIAL WASTEWATER DISCHARGE HAS BEEN ISSUED BY THE SANITATION DISTRICTS FOR SAID CONNECTION.

BEFORE BREAKING INTO OR CONSTRUCTION ON A COUNTY SANITATION DISTRICT SEWER AND PRIOR TO FINAL ACCEPTANCE OF THE PROJECT, SANITATION DISTRICT INSPECTOR SHALL BE NOTIFIED BY PHONE (818) 962-8405 SO THAT REQUIRED INSPECTION CAN BE MADE.

16. FULL COMPLIANCE WITH PART IV OF THE SPECIAL PROVISIONS IS REQUIRED FOR THE INSTALLATION OF A.B.S. COMPOSITE PIPE.
17. TYPICAL WATER STOP GASKETS AND CLAMPS ARE REQUIRED FOR THE CONNECTION OF A.B.S. COMPOSITE PIPE TO IRON/STEEL STRUCTURES.
18. A.B.S. SOLID HALL PIPE MUST BE USED FOR VIE AND HOUSE LATERAL CONNECTION TO A.B.S. COMPOSITE MAINLINE SEWER PIPE.
19. A.B.S. COMPOSITE PIPE SHALL BE INSTALLED IN CONFORMANCE WITH THE TABLE IN SECTION 8-2.1 OF PART IV OF THE SPECIAL PROVISIONS.
20. THREE DEGREE DEFLECTION COUPLERS ARE REQUIRED FOR RADII OF CURVATURE LESS THAN 300 FEET WHEN USING 8" A.B.S. COMPOSITE PIPE.
21. NO CONNECTIONS FOR DISPOSAL OF INDUSTRIAL WASTE IS ALLOWED IF A.B.S. COMPOSITE PIPE IS USED.
22. SEWER LINE CURVATURE SHALL NOT BE ACHIEVED BY PULLING OF JOINTS OR PIPE.
23. ALL 1/2" AND 3/4" LATERALS ARE TO BE LOCATED AT LEAST FIVE FEET APART AND WHEN FEASIBLE, NOT CLOSER THAN FIVE FEET APART.
24. A.B.S. SOLID HALL PIPE IS NOT ACCEPTABLE FOR USE AS MAINLINE SEWER.
25. ONLY VIE BRANCHES ARE TO BE USED FOR CONNECTION TO A.B.S. COMPOSITE MAINLINE SEWER PIPE.

LOT 2 SERVED BY EXISTING SEWER CONNECTION

GENERAL NOTES:

1. ELEVATIONS ARE IN FEET ABOVE M.S.L. U.S. SEA LEVEL UNLESS OTHERWISE NOTED.
2. NO REVISIONS SHALL BE MADE WITHOUT THE APPROVAL OF THE DEPARTMENT OF PUBLIC WORKS.
3. NO REPRESENTATIVE OF THE CONTRACTOR SHALL BUY OR LAY OUT ANY PORTION OF THE WORK.
4. GRADES TO WHICH THE WORK IS TO BE CONSTRUCTED ARE SHOWN ON PLANS AND PROFILES. GRADE POINTS FOR TOP OF CURBS, CENTER LINE OF SYMETS, OR CENTER LINE OF ALLEYS ARE SHOWN BY CIRCLES ON PROFILES AT ALL POINTS BETWEEN DESIGNATED POINTS THE GRADE SHALL BE ESTABLISHED BY A STRAIGHT LINE BETWEEN SAID DESIGNATED POINTS.
5. THE PRIVATE ENGINEER SHALL FURNISH THE CONSTRUCTION OF ALL HOUSE LATERALS AND VIE OR VIE BRANCHES AND SHALL PROVIDE STAKES AT THE PROPER LOCATIONS WITH STATIONING PLAINLY MARKED. ALL HOUSE LATERALS SHALL BE CONSTRUCTED IN A STRAIGHT ALIGNMENT AT RIGHT ANGLES FROM THE MAIN LINE SEWER EXCEPT AS SHOWN ON THE PLANS. HOUSE LATERALS FROM UNITS SHALL NOT HAVE AN ANGLE OF LESS THAN 45° WITH THE MAIN LINE SEWER. ANY CHANGES IN ALIGNMENT SHALL BE REQUESTED IN WRITING BY THE PRIVATE ENGINEER.
6. THE PRIVATE ENGINEER SHALL FURNISH THE HOUSE LATERAL DEPTH AT THE PROPERTY LINE BELOW THE TOP OF CURB ELEVATION FOR EACH HOUSE LATERAL ON THE GRADE SHEET.
7. BEFORE WORK CAN BE STARTED THE CONTRACTOR MUST OBTAIN A PERMIT TO EXCAVATE IN COUNTY STREETS FROM THE COUNTY DEPT. OF PUBLIC WORKS. THE CONTRACTOR SHALL PAY A FEE TO THE DIRECTOR OF PUBLIC WORKS, 900 S. FAY-MOUNT AVE., ALHAMBRA, CA 91803, 8TH FLR. TO COVER THE COST OF CONSTRUCTION INSPECTION AND RECORD PLANS.
8. IF WORK IS TO BE DONE IN A STATE HIGHWAY A PERMIT MUST BE OBTAINED FROM THE STATE OF CALIFORNIA, DIVISION OF HIGHWAYS, 138 SOUTH SPRING STREET, LOS ANGELES, CALIFORNIA.
9. APPROVAL OF THIS PLAN BY THE COUNTY OF L.A. DOES NOT CONSTITUTE A REPRESENTATION AS TO THE ACCURACY OF THE LOCATION OF OR THE EXISTENCE OR NON-EXISTENCE OF ANY UNDERGROUND UTILITY PIPE, OR STRUCTURE WITHIN THE LIMITS OF THIS PROJECT. THIS NOTE APPLIES TO ALL PAGES.
10. REFER TO SECTION 7.04.1 OF THE STANDARD SPECIFICATIONS, REGARDING SAFETY CIRCLES.
11. PRIOR TO THE RESUMPTION OF THE REQUIRED SEWER CONSTRUCTION REPEAT THE CONTRACTOR SHALL OBTAIN AND FILE WITH THE DEPT. OF PUBLIC WORKS, A PERMIT TO EXCAVATE IN COUNTY STREETS FROM THE LOS ANGELES COUNTY CONST. DIV. A PERMIT TO EXCAVATE IN THE STATE OF CALIFORNIA, DIVISION OF INDUSTRIAL SAFETY AND CERTIFICATE OF WORKERS COMPENSATION INSURANCE WITH THE DEPARTMENT OF PUBLIC WORKS, 900 S. FAY-MOUNT, ALHAMBRA, CA 91803, 8TH FLR. AS REQUIRED BY THE CERTIFICATE HOLDER TO BE NOTIFIED 30 DAYS PRIOR TO CANCELLATION OF PLAN.

CONSTRUCTION NOTES:

1. WORK SHALL BE CONSTRUCTED ACCORDING TO THE STANDARD SPECIFICATIONS FOR PUBLIC WORKS CONSTRUCTION 1988 EDITION BY THE BOARD OF SUPERVISORS AND SPECIAL PROVISIONS FOR THE CONSTRUCTION OF SANITARY SEWERS DATED DEPT 1976.
2. THE CONTRACTOR SHALL NOTIFY THE ENVIRONMENTAL REPLY COMPLIANCE DIVISION BY TELEPHONE IMMEDIATELY AT LEAST TWENTY FOUR HOURS BEFORE STARTING ANY WORK UNDER THE CONTRACT.
3. HOUSE LATERALS TO BE CONSTRUCTED WITH INVERTS AT PROPERTY LINE 8 FEET BELOW CURB GRADE EXCEPT AS NOTED.
4. VIE OR VIE BRANCHES MAY BE USED FOR CONNECTIONS TO MAINLINE SEWERS EXCEPT AS NOTED.
5. ALL STRUCTURES ON THE PROPERTY LINE OR PROPERTY LINES PRODUCED AT RIGHT ANGLES TO THE SEWER LINE AT THE CENTER LINE OF EACH MANHOLE.
6. PROVIDE STAKES ON THE PROPERTY LINE OR PROPERTY LINES PRODUCED AT RIGHT ANGLES TO THE SEWER LINE AT THE CENTER LINE OF EACH MANHOLE.
7. MANHOLE TOPS ON UNIMPROVED RIGHTS OF WAY TO BE SIX INCHES ABOVE FINISHED GRADE.
8. UNIMPROVED CLAY PIPE JOINTS SHALL BE TYPE "C" OR "D" PER STANDARD SPECIFICATIONS SECTION 280.3.
9. IF A POWER POLE IS WITHIN THREE FEET OF THE SEWER, THE SEWER SHALL BE ENCASED PER 8.25.02.02.02 PER TWO FEET ON EACH SIDE FROM THE POINT OF INTERFERENCE.
10. IF DURING THE COURSE OF CONSTRUCTION IT IS DETERMINED THAT THERE IS LESS THAN FOUR FEET OF COVER OVER THE TOP OF A MAIN LINE OR HOUSE LATERAL SEWER WHICH IS NOT INDICATED ON THE PLANS, THE PIPE SHALL BE ENCASED PER 8.25.02.02.02 UNLESS OTHERWISE APPROVED BY THE DEPT. OF PUBLIC WORKS.
11. ALL JOINTS BETWEEN CAST IRON PIPE AND V-PIPED CLAY PIPE SHALL BE MADE WITH A RUBBER SLEEVE JOINT, TYPE "C" OR "D" WITHIN BUSINESS IF NECESSARY, PER STANDARD SPECIFICATIONS, SECTION 280.3.
12. SEWERS TO BE TESTED FOR LEAKAGE PER SECTION 280.1.6 OF THE STANDARD SPECIFICATIONS AND SPECIAL PROVISIONS.
13. RESURFACE ALL TRENCHES WITHIN PAVED AREAS TO MEET L.A. COUNTY ROAD DEPT. OR CALIFORNIA STATE HIGHWAY REQUIREMENTS IN ACCORDANCE WITH PERMITS.
14. FULL COMPLIANCE WITH SECTION 281.5.02 OF THE STANDARD SPECIFICATIONS SHALL BE REQUIRED FOR BACKFILL IN STREETS. CERTIFICATION OF BACKFILL COMPLETION AND SAND EQUIVALENTS BY A QUALIFIED REGISTERED TESTING LABORATORY SHALL BE PROVIDED BY THE PERMITTEE PRIOR TO THE RESUMPTION OF A CERTIFICATE OF PARTIAL ACCEPTANCE.
15. SPECIAL BACKFILL IN BASEMENT CONSTRUCTION IS BACKFILL TRENCH AND REFLECT OTHER EARTH SO AS TO ACHIEVE THE INTENDED OR FINISHED GRADES AND SLOPES SHOWN ON THE GRADING PLAN APPROVED FOR THE DEVELOPMENT BY THE LAND DEVELOPMENT DIVISION. IN ALL BACKFILL AND EARTH PLACEMENT SHALL BE COMPACTED TO A MINIMUM OF 90% OF MAXIMUM DENSITY PER ASTM D 1557 METHOD OF TEST OR AS WORKED, ACCEPTABLE CERTIFICATION OF SUCH COMPACTION SHALL BE SUBMITTED TO THE CONSTRUCTION DIVISION, DEPT. OF PUBLIC WORKS.

SANITARY SEWERS

TO BE CONSTRUCTED IN

TRACT NO. 44817

PRIVATE CONTRACT NO. 10837

INDEX NO. U-121, B-4

1 SHEET 2 PAGES

52877

SCALE: HORIZ. 1" = 40' VERT. 1" = 4'

DATE: JANUARY 1988

PREPARED IN THE OFFICES OF

LOREN PHILLIPS & ASSOC. INC.

1740 E. HUNTINGTON DR. SUITE 208

DUARTE, CA 91010 818-359-4511 213-681-7823

BY: *John A. Callahan*

REG. C. E. No. 12764

EXPIRES: 3-31-89



EXPIRATION DATE 3-31-89

THE FOLLOWING LATEST REVISED STANDARD PLANS ON FILE IN THE OFFICE OF THE COUNTY ENGINEER SHALL APPLY TO THE DESIGN OF THIS PROJECT.

SEWER	8.0
MINIMUM PUBLIC SAFETY REQUIREMENTS	8.0
SEWER MANHOLES	8.0
STANDARD MANHOLE RINGS	8.0
SEWER FOR SEWER PIPE	8.0
CHARGING AND ENCASING	8.0
VIE OR VIE BRANCH	8.0
ALTERNATE BRIDGE WORK	8.0
SEWER MANHOLES FRAME AND COVER	8.0
NON-REINFORCED PRECAST CONCRETE MANHOLE	8.0

COUNTY OF LOS ANGELES, CALIFORNIA

THOMAS A. TIDE MANSON, DIRECTOR OF PUBLIC WORKS

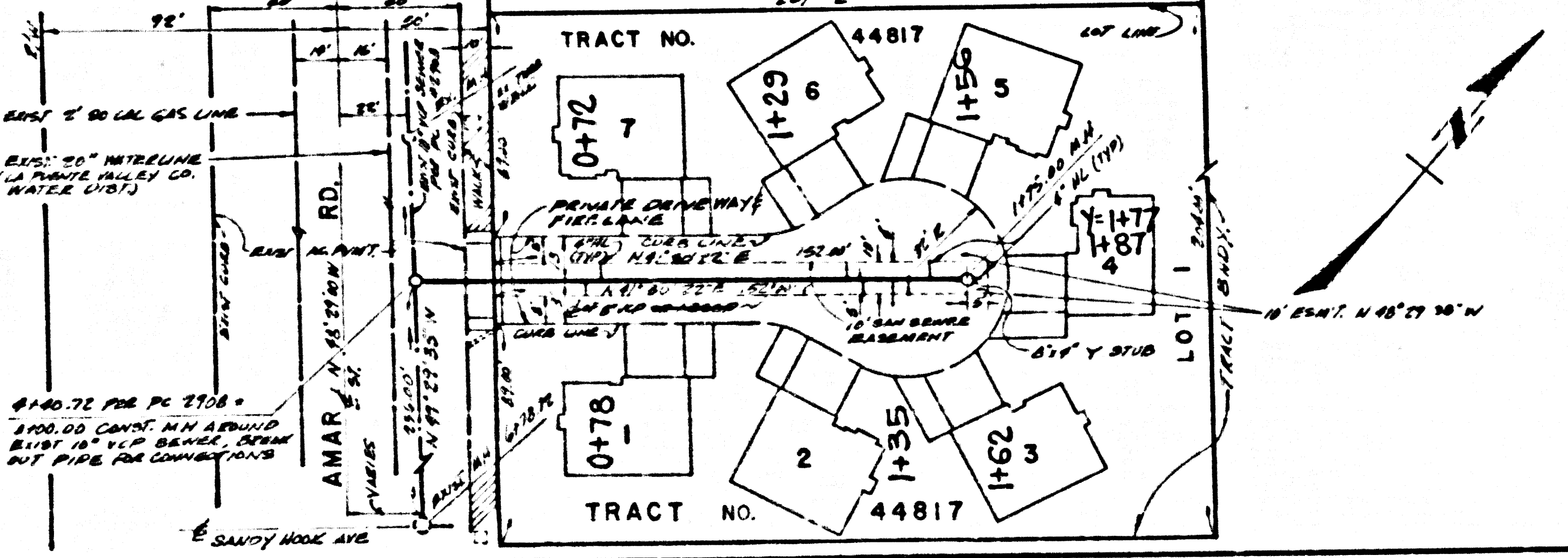
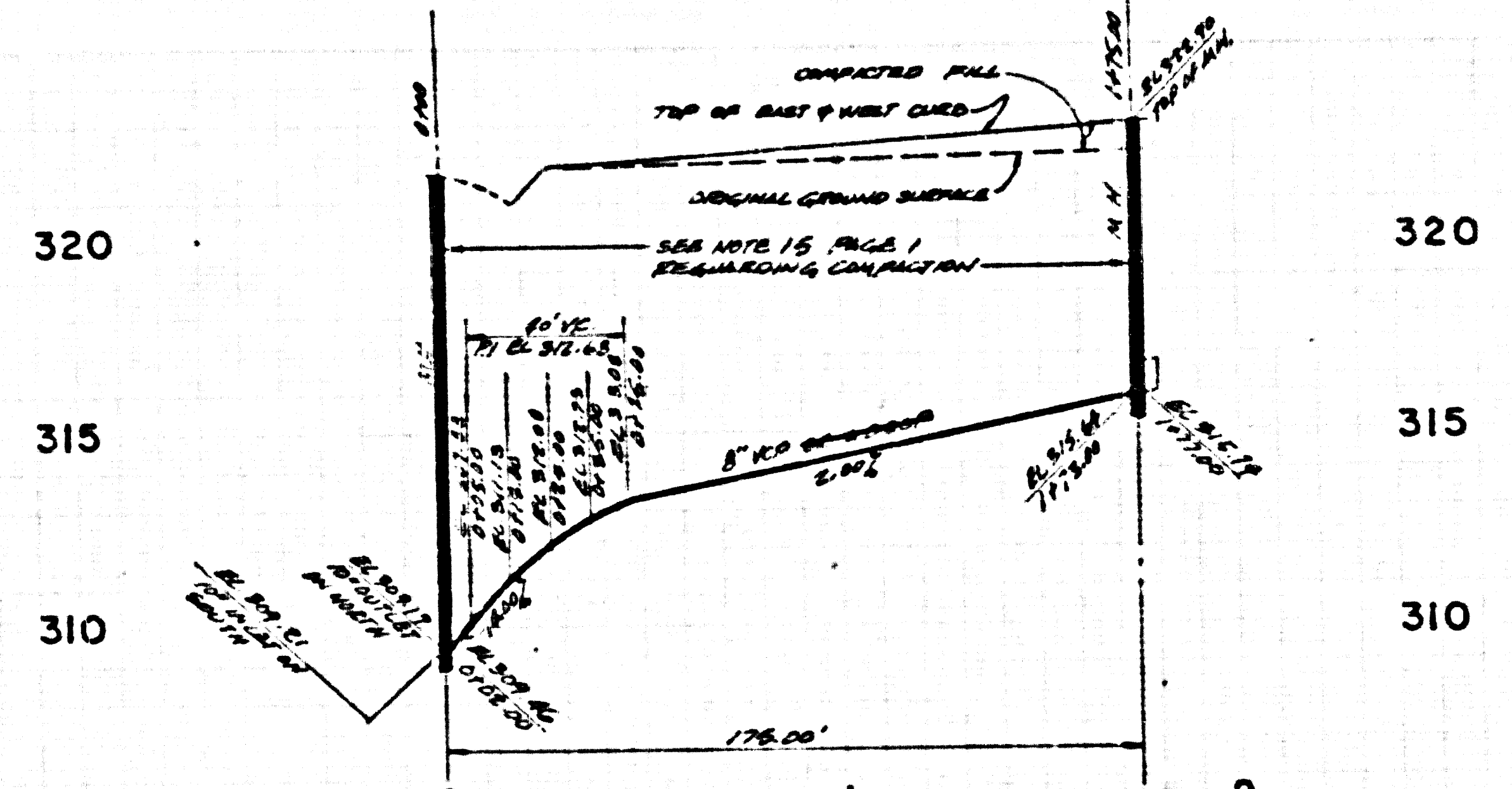
CHARLES W. CARRY, CHIEF ENGINEER

APPROVED: *Dean E. Bell* 6-17-88

CHECKED: *James O. King* 6-15-88

DATE: 6-15-88

LA PUENTE BLDG. DIST. 2



REVIEWED BY: *Sam G. Hall* DATE: 6/15/88

NO L.A. COUNTY CHARGE FOR CONNECTIONS
 SEE COUNTY SANITATION DISTRICT FOR SPECIAL CONNECTION CHARGES

52878