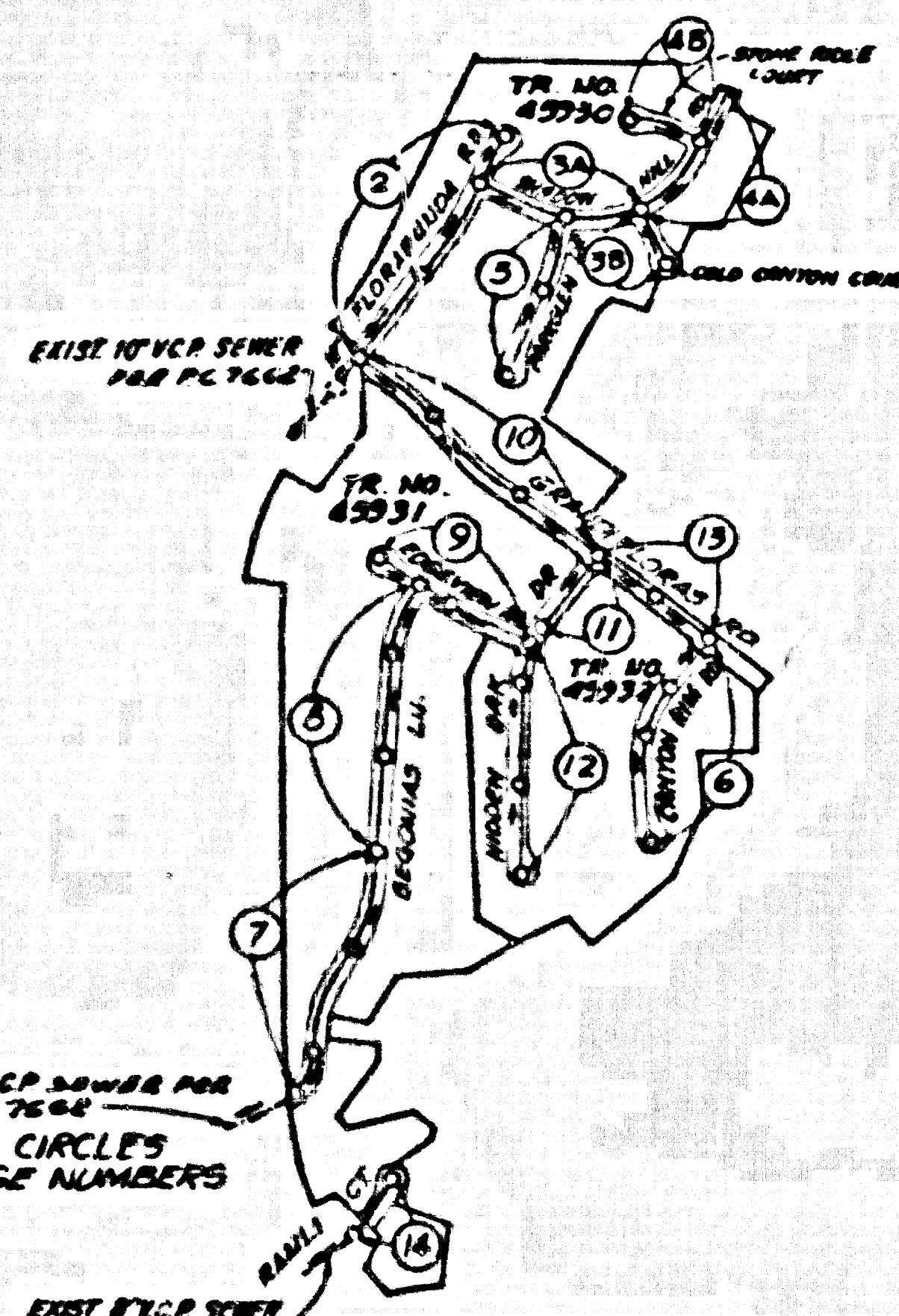


B.M. 5009 ELEV. 167.150
 IRAM-SET IN SEELY COR. CONC. BASE LIMIT POST
 4 METERS AT SEELY COR. SOLEDAD CYN RD AND
 ANTELOPE VALLEY FARM. C.T. OF CORNER 41' 8"
 C.T. OF CORNER AND 36' 3" C.T. SOLEDAD CYN RD
 AND 36' 3" C.T. 1482714
 NEWHALL QUAD. 19 7E



INDEX MAP
 P.C. 10853 TR. NO. 45930, 45931 & 45932
 SCALE: 1" = 800'
 T.B. 125, 6-6

DOUBLE VERTICAL SCALE

PRIVATE ENGINEER'S NOTICE TO CONTRACTOR
 THE EXISTENCE AND LOCATION OF ANY UNDERGROUND UTILITY PIPES OR STRUCTURE SHOWN ON THESE PLANS ARE OBTAINED BY A SEARCH OF THE AVAILABLE RECORDS TO THE BEST OF OUR KNOWLEDGE. THERE ARE NO EXISTING UTILITIES EXCEPT AS SHOWN ON THIS MAP. THE CONTRACTOR IS REQUIRED TO TAKE DUE PRECAUTIONARY MEASURES TO PROTECT THE UTILITY LINES AND ANY OTHER LINES NOT OF RECORD OR NOT SHOWN ON THIS DRAWING. PRIOR TO EXCAVATION THE CONTRACTOR SHALL CALL TOLL FREE 800-488-4133 TO VERIFY THE UNDERGROUND LOCATION OF GAS AND TELEPHONE LINES.

CONSTRUCTION NOTES (CONT.)

16. FULL COMPLIANCE WITH PART IV OF THE SPECIAL PROVISION IS REQUIRED FOR THE INSTALLATION OF A B.S. COMPOSITE PIPE.
17. MANHOLE WATER STOP GASKETS AND CLAMPS ARE REQUIRED FOR THE CONNECTION OF A.B.S. COMPOSITE PIPE TO MANHOLE STRUCTURES.
18. A.B.S. SOLID WALL PIPE MUST BE USED FOR WYE AND HOUSE LATERAL CONNECTIONS TO A.B.S. COMPOSITE MAINLINE SEWER PIPE.
19. A.B.S. COMPOSITE PIPES SHALL BE BEDDED IN COMPLIANCE WITH THE TABLE IN SECTION 8-31 PART IV OF SPECIAL PROVISIONS.
20. THREE DEGREE DEFLECTION COUPLERS ARE REQUIRED FOR RADIUS OF CURVATURE LESS THAN 300 FEET WHEN USING 6" A.B.S. COMPOSITE PIPE.
21. NO CONNECTIONS FOR DISPOSAL OF INDUSTRIAL WASTE IS ALLOWED IF A B.S. COMPOSITE PIPE IS USED.
22. SEWER LINE CURVATURE SHALL NOT BE ACHIEVED BY PULLING OF JOINTS OR BEVELING PIPE ENDS WHEN USING PLASTIC PIPE INCLUDING A.B.S. COMPOSITE PIPE.
23. ALL WYES AND OR HOUSE LATERALS ARE TO BE LOCATED AT LEAST FIVE FEET APART AND WHEN POSSIBLE NOT CLOSER THAN FIVE FEET TO ANY MANHOLE.
24. A B.S. SOLID WALL PIPE IS NOT ACCEPTABLE FOR USE AS MAINLINE SEWER.
25. ONLY WYE BRANCHES ARE TO BE USED FOR CONNECTION TO A.B.S. COMPOSITE MAINLINE SEWER PIPE.
26. BACK FLOW PREVENTERS MAY BE REQUIRED.

NO CONNECTION FOR THE DISPOSAL OF INDUSTRIAL WASTES SHALL BE MADE TO SEWERS SHOWN ON THESE DRAWINGS UNTIL A PERMIT FOR INDUSTRIAL WASTEWATER DISCHARGE HAS BEEN ISSUED BY THE SANITATION DISTRICTS FOR SAID CONNECTION.

BEFORE BREAKING INTO OR CONSTRUCTION ON A COUNTY SANITATION DISTRICT SEWER AND PRIOR TO FINAL ACCEPTANCE OF THE PROJECT, SANITATION DISTRICT INSPECTOR SHALL BE NOTIFIED BY PHONE (818) 962-8605 SO THAT REQUIRED INSPECTION CAN BE MADE.

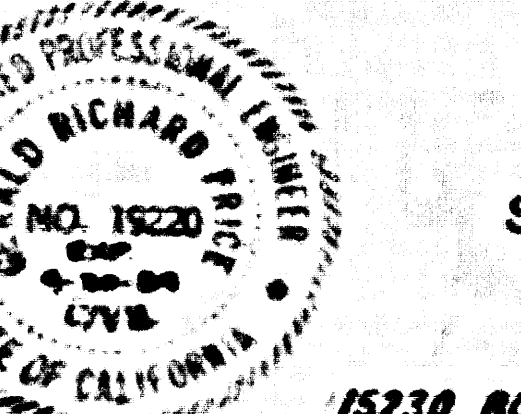
GENERAL NOTES:

1. ELEVATIONS ARE IN FEET ABOVE M.S.C. & B.S. SEA LEVEL DATUM OF 1928.
2. NO REVISIONS SHALL BE MADE IN THESE PLANS WITHOUT THE APPROVAL OF THE DIRECTOR OF PUBLIC WORKS.
3. NO REPRESENTATION OF THE DEPARTMENT OF PUBLIC WORKS WILL SURVEY OR LAY OUT ANY PORTION OF THE WORK.
4. GRADES TO WHICH THIS IMPROVEMENT IS TO BE CONSTRUCTED ARE SHOWN ON PLANS AND PROFILE GRADE POINTS FOR TOP OF CURBS, CENTER LINE OF STREETS, TOP OF LATERALS AND ALL UTILITIES SHOWN BY CIRCLES AT ALL POINTS BEING THE END OF MEASURED POINTS. THE GRADE SHALL BE ESTABLISHED SO AS TO CONFORM TO A STRAIGHT LINE OF VERTICAL CURVE WITH GRADE POINTS.
5. THE PRIVATE ENGINEER SHALL FURNISH THE DEPARTMENT OF PUBLIC WORKS WITH GRADE SHEETS AND STRAIGHTENED PROFILE GRADES. ALL HOUSE LATERALS AND "T" OR "Y" BRANCHES AND SHALL PROVIDE STAIRS FOR THEM AT THEIR PROPER LOCATIONS WITH STAIRWAYS PLANS IF MARKED ALL HOUSE LATERALS SHALL BE CONSTRUCTED AS STRAIGHT LINES AT RIGHT ANGLES FROM THE MAIN LINE SEWER EXCEPT AS SHOWN ON THE PLANS. HOUSE LATERALS SHALL BE CONSTRUCTED AT AN ANGLE OF LESS THAN 45° WITH THE MAIN LINE SEWER. ANY CHANGE IN ALIGNMENT SHALL BE REQUESTED IN WRITING BY THE PRIVATE ENGINEER.
6. THE PRIVATE ENGINEER SHALL FURNISH THE HOUSE LATERAL DEPTH AT THE PROPERTY LINE BELOW THE TOP OF CURB ELEVATION FOR EACH HOUSE LATERAL ON THE GRADE SHEET.
7. BEFORE WORK CAN BE STARTED THE CONTRACTOR MUST OBTAIN A PERMIT TO EXCAVATE IN COUNTY STREETS FROM THE CONSTRUCTION DIVISION OF THE COUNTY ENGINEER'S OFFICE OF PUBLIC WORKS, 100 SOUTH BRINK STREET, LOS ANGELES, CALIFORNIA 90012. THE PERMIT FEE IS \$100.00 AND MAY BE PAID TO THE DIRECTOR OF PUBLIC WORKS, 100 SOUTH BRINK STREET, LOS ANGELES, CALIFORNIA 90012. THE PERMIT FEE WILL COVER THE COST OF CONSTRUCTION INSPECTION AND RECORD PLANS.
8. BEFORE ANY WORK IS STARTED THE CONTRACTOR MUST OBTAIN FROM THE STATE OF CALIFORNIA, DIVISION OF HIGHWAYS, 120 SOUTH BRINK STREET, LOS ANGELES, CALIFORNIA 90012.
9. APPROVAL OF THIS PLAN BY THE COUNTY OF LOS ANGELES DOES NOT CONSTITUTE A REPRESENTATION AS TO THE ACCURACY OF THE LOCATION OF OR THE EXISTENCE OF ANY UNDERGROUND UTILITY PIPE OR STRUCTURE WITHIN THE LIMITS OF THIS PROJECT. THIS NOTE APPLIES TO ALL PAGES.
10. REFER TO SECTION 11.14 OF THE STANDARD SPECIFICATIONS REGARDING SAFETY SIGNS.
11. PRIOR TO THE ISSUANCE OF THE REQUIRED SEWER CONSTRUCTION PERMIT, THE CONTRACTOR SHALL OBTAIN AND FILE WITH THE DEPARTMENT OF PUBLIC WORKS COPIES OF A PERMIT TO EXCAVATE IN COUNTY STREETS FROM THE CONSTRUCTION DIVISION OF THE DEPARTMENT OF PUBLIC WORKS. A PERMIT FOR EXCAVATIONS AND THE RIGHTS FROM THE STATE OF CALIFORNIA, A DIVISION OF HIGHWAYS, SHALL BE OBTAINED. A CERTIFICATE OF WORKERS COMPENSATION INSURANCE WITH THE DEPARTMENT OF PUBLIC WORKS, 100 SOUTH BRINK STREET, LOS ANGELES, CALIFORNIA 90012, MUST BE OBTAINED AND THE CONTRACTOR SHALL BE NOTIFIED 30 DAYS PRIOR TO CANCELLATION OF POLICY.

CONSTRUCTION NOTES:

1. WORK SHALL BE CONSTRUCTED ACCORDING TO THE STANDARD SPECIFICATIONS FOR PUBLIC WORKS CONSTRUCTION (1988 EDITION) AND SECT. 8-1.1278 AND SHALL BE PROSECUTED ONLY IN THE PRESENCE OF THE DEPT. OF PUBLIC WORKS.
2. THE CONTRACTOR SHALL NOTIFY THE CONSTRUCTION DIVISION BY TELEPHONE (800) 488-4133 AT LEAST TWENTY-FOUR HOURS BEFORE STARTING ANY WORK UNDER THIS CONTRACT.
3. HOUSE LATERALS TO BE CONSTRUCTED WITH INVERTS AT PROPERTY LINE 8 FEET BELOW CURB GRADE EXCEPT AS NOTED.
4. WYE OR TEE BRANCHES MAY BE USED FOR CONNECTIONS TO MAINLINE SEWERS EXCEPT AS NOTED.
5. ALL STRUCTURES SHALL BE EITHER BRICK MANHOLES PER 5-3 OR PRECAST CONCRETE MANHOLES PER 5-36 EXCEPT AS NOTED.
6. PROVIDE STAIRS ON THE PROPERTY LINE OR PROPERTY LINES PRODUCED AT RIGHT ANGLES TO THE SEWER LINE AT THE CENTER LINE OF EACH MANHOLE.
7. MANHOLE TOPS IN UNIMPROVED RIGHTS OF WAY TO BE SIX INCHES ABOVE FINISHED GRADE.
8. WITHEED CLAY PIPE JOINTS SHALL BE TYPE "D" OR "E" PER STANDARD SPECIFICATIONS SECTION 200-2.
9. IF A POWER POLE IS WITHIN THREE FEET OF THE SEWER, IT SHALL BE ENCASED PER 5-38. CASE IT TWO FEET ON EACH SIDE FROM THE POINT OF INTERFERENCE.
10. DURING THE COURSE OF CONSTRUCTION IT IS DETERMINED THAT THERE IS LESS THAN FOUR FEET OF COVER OVER THE TOP OF A MAIN LINE OR HOUSE LATERAL V.C.P. SEWER WHICH IS NOT INDICATED ON THE PLANS, THE PIPE SHALL BE ENCASED PER 5-38. CASE IT UNLESS OTHERWISE APPROVED BY THE DIRECTOR OF PUBLIC WORKS.
11. ALL JOINTS BETWEEN CAST IRON PIPE AND WITHEED CLAY PIPE SHALL BE MADE BY A RUBBER SLEEVE JOINT, TYPE "C" OR "D" WITH RUBBERING AS NECESSARY PER STANDARD SPECIFICATIONS SECTION 200-2.
12. ALL JOINTS BETWEEN CAST IRON PIPE & A.B.S. PIPE SHALL BE MADE WITH APPROVED FITTINGS.
13. SEWERS TO BE TESTED FOR LEAKAGE PER SECTION 306-1.4 OF THE STANDARD SPECIFICATIONS AND SPECIAL PROVISIONS.
14. RESURFACE ALL TRENCHES WITHIN PAVED AREAS TO MEET LOS ANGELES COUNTY PUBLIC WORKS OR CALIFORNIA STATE HIGHWAY REQUIREMENTS IN ACCORDANCE WITH POINTS.
15. FULL COMPLIANCE WITH SECTION 200-1.3.4 OF THE STANDARD SPECIFICATIONS WILL BE REQUIRED FOR BACKFILL IN STREETS. CERTIFICATION OF BACKFILL COMPACTION AND SAND EQUIVALENTS BY A QUALIFIED REGISTERED TESTING LABORATORY SHALL BE PROVIDED BY THE CONTRACTOR PRIOR TO THE ISSUANCE OF A CERTIFICATE OF FINAL ACCEPTANCE.
16. BACKFILL IN EASEMENT CONSTRUCTION: (A) BACKFILL TRENCH AND REPLACE OTHER EARTH SO AS TO ACHIEVE THE NATURAL OR FINISHED GRADES AND SLOPES SHOWN ON THE GRADING PLAN APPROVED FOR THIS DEVELOPMENT BY THE LAND DEVELOPMENT DIVISION. (B) ALL BACKFILL AND EARTH REPLACED SHALL BE COMPACTED TO A MINIMUM OF 90% OF MAXIMUM DENSITY PER A 1 1/2" STD. METHOD OF TEST D94-17 AS MODIFIED. ACCEPTABLE CERTIFICATION OF SUCH COMPACTION SHALL BE SUBMITTED TO THE CONSTRUCTION DIVISION OF PUBLIC WORKS DEPARTMENT.

SANITARY SEWERS
 TO BE CONSTRUCTED IN
TRACT NO. 45930, 45931 & 45932
PRIVATE CONTRACT NO. 10853
 INDEX A-79 (1512)
 7 SHEETS, 14 PAGES

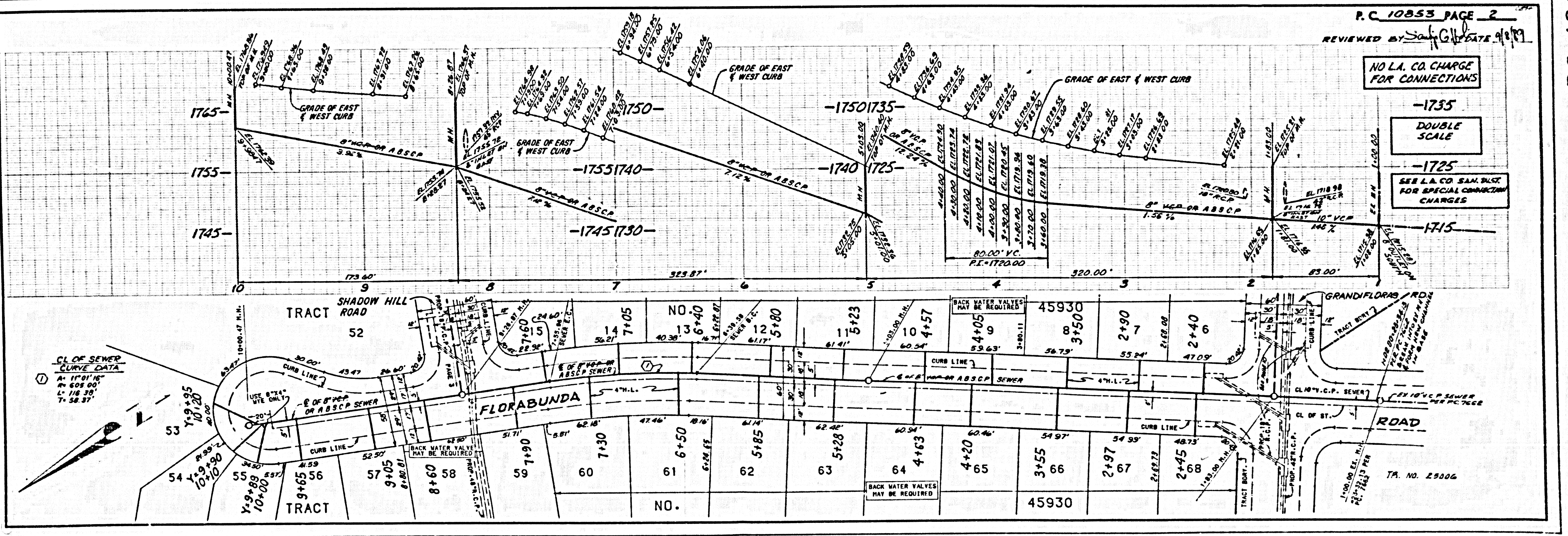


SCALE: VERT. 1" = 8'
 HORIZ. 1" = 80'
 APRIL, 1988
 PREPARED IN THE OFFICES OF
SIRAND ENGINEERING ASSOCIATES
 15230 BURBANK BLVD. VAN NUYS, CA. 91411. (818) 787-4550.
 BY: *Richard Price*
 GERALD R. PRICE REG. C.E. NO. 19220

THE FOLLOWING LATEST REVISED STANDARD PLANS ON FILE IN THE OFFICE OF THE DEPARTMENT OF PUBLIC WORKS SHALL APPLY TO THE CONSTRUCTION OF THIS PROJECT:

| | |
|---------------------------------------|------|
| LETINGS | 8-1 |
| MINIMUM 1/2" C.S. SAFETY REQUIREMENTS | 8-2 |
| ENCASING | 8-3 |
| STANDARD MANHOLE STEP | 8-17 |
| BEDDING FOR SEWER PIPE | 8-21 |
| CRADLING AND ENCASEMENT | 8-23 |
| WYE OR TEE SUPPORT | 8-26 |
| ADJUSTABLE FITTING BRITING | 8-28 |
| LOCKING MANHOLE FRAME AND COVER | 8-28 |
| NON-REINFORCED PRECAST CONCRETE | 8-30 |
| CHIMNEY | 8-27 |
| SPECIAL HOUSE LATERALS | 8-29 |

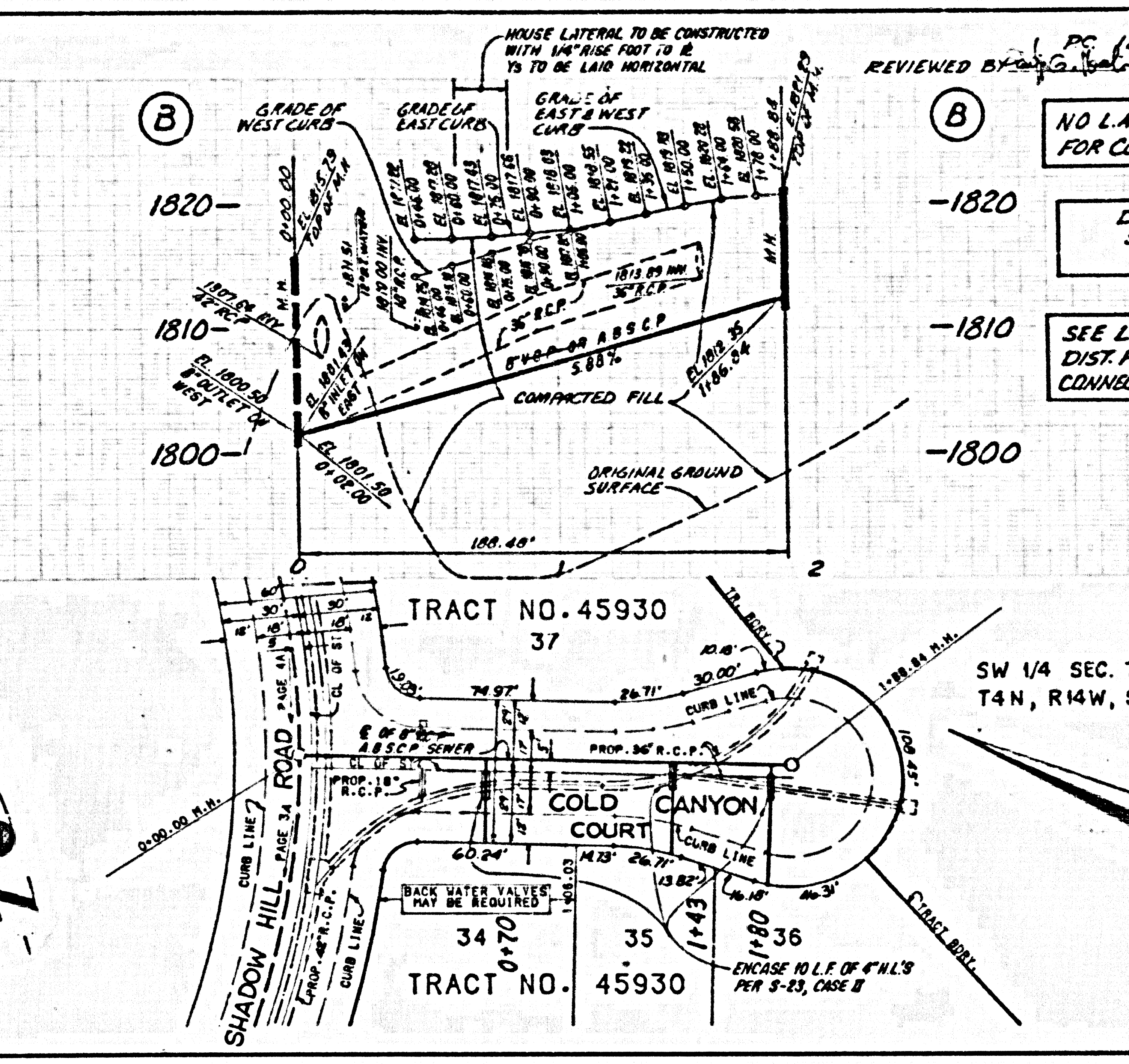
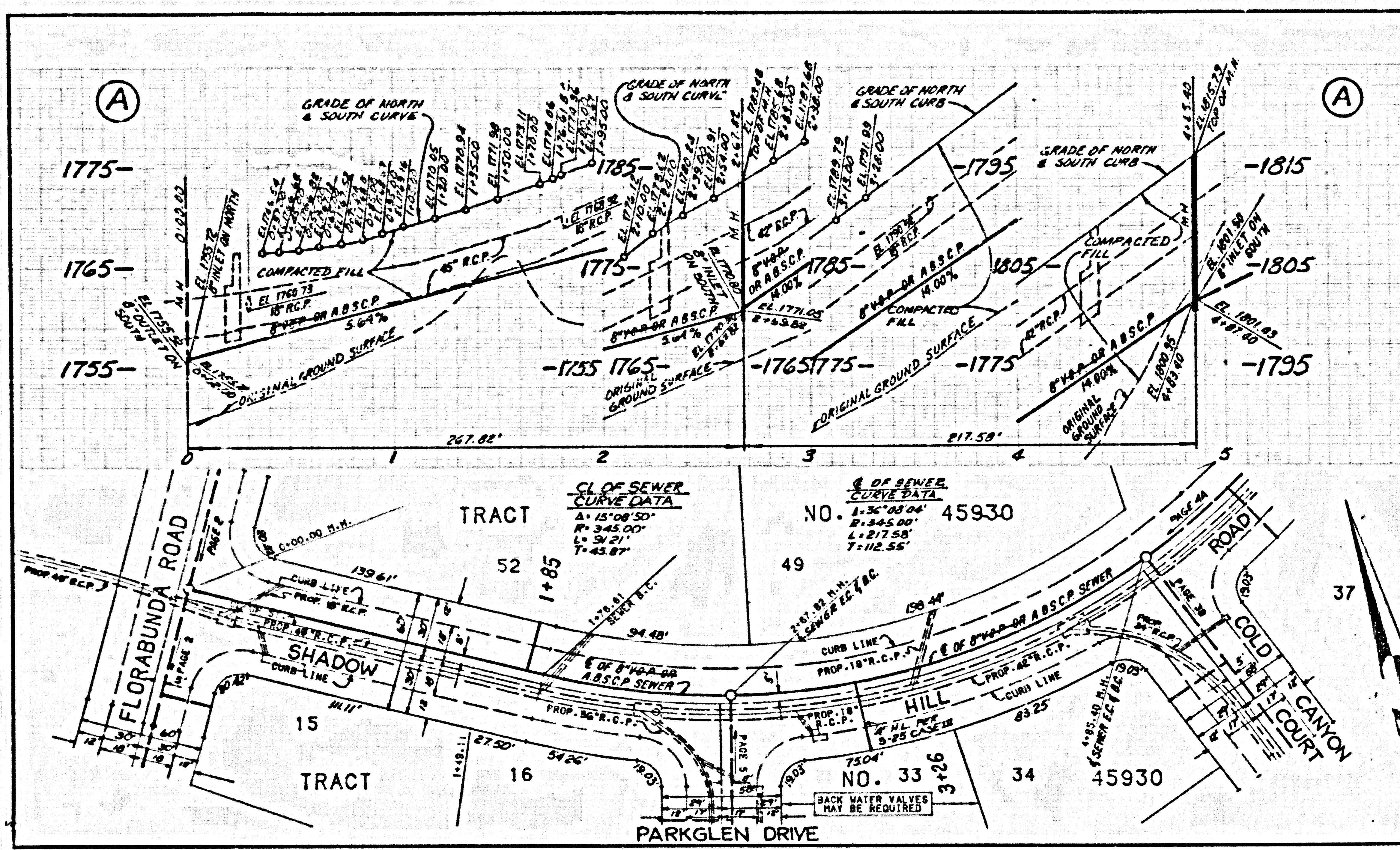
COUNTY OF LOS ANGELES, CALIFORNIA
 THOMAS A. TIDEMANSON
 DIRECTOR OF PUBLIC WORKS
 CHARLES W. CARRY
 CHIEF ENGINEER
 CO. SAN. DIST. NO. 26
 APPROVED *Dean Johnson* 9/13/89
 APPROVED *James E. Jinn* 9/14/89
 CHECKED *James E. Jinn* 9/13/89
 REG. C.E. NO. 18116
 NEWHALL COUNTY WATER DISTRICT
 APPROVED BY: *James E. Jinn*
 JAMES E. JINN - GEN. MANAGER
 DATE 8/28/89



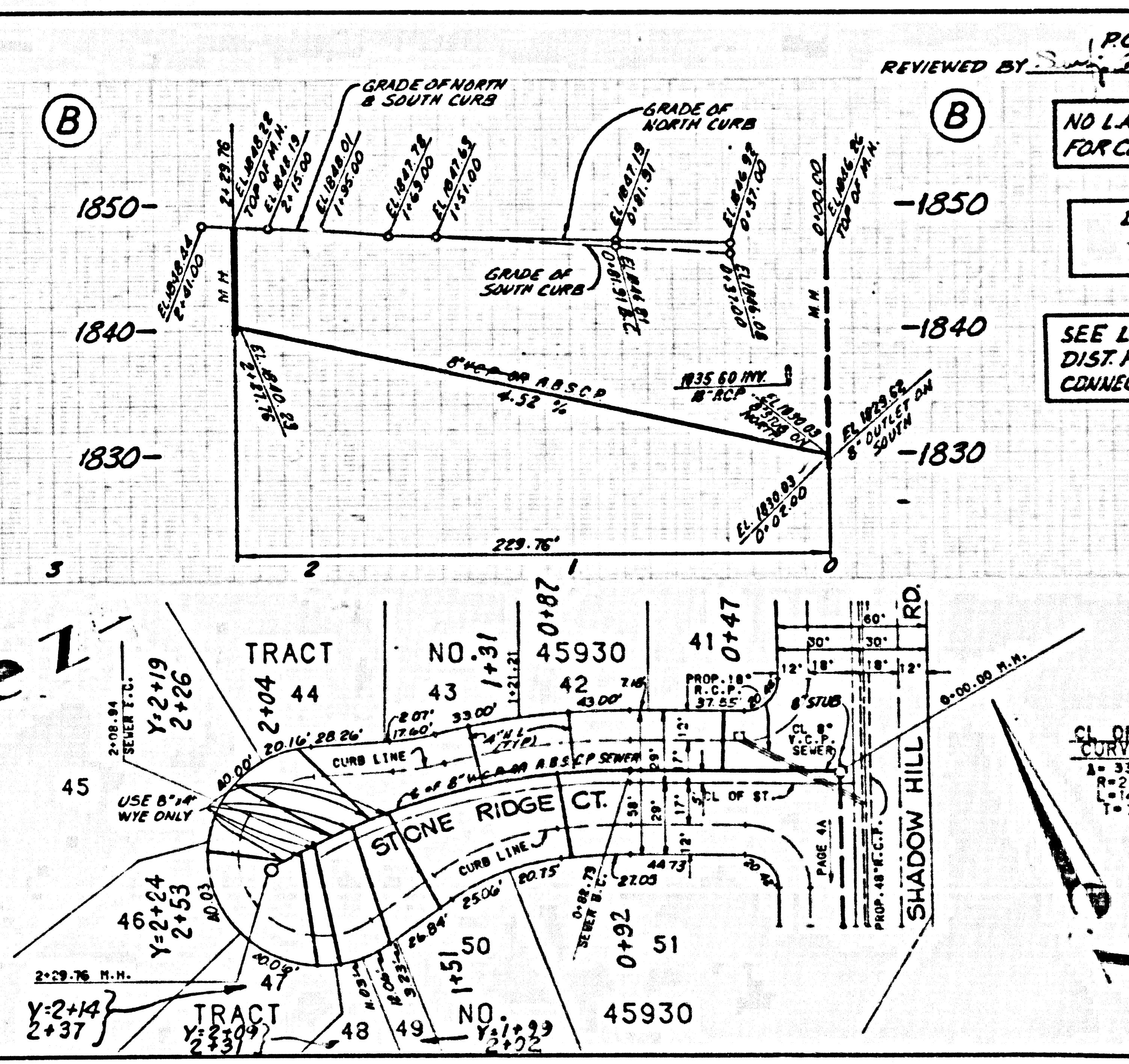
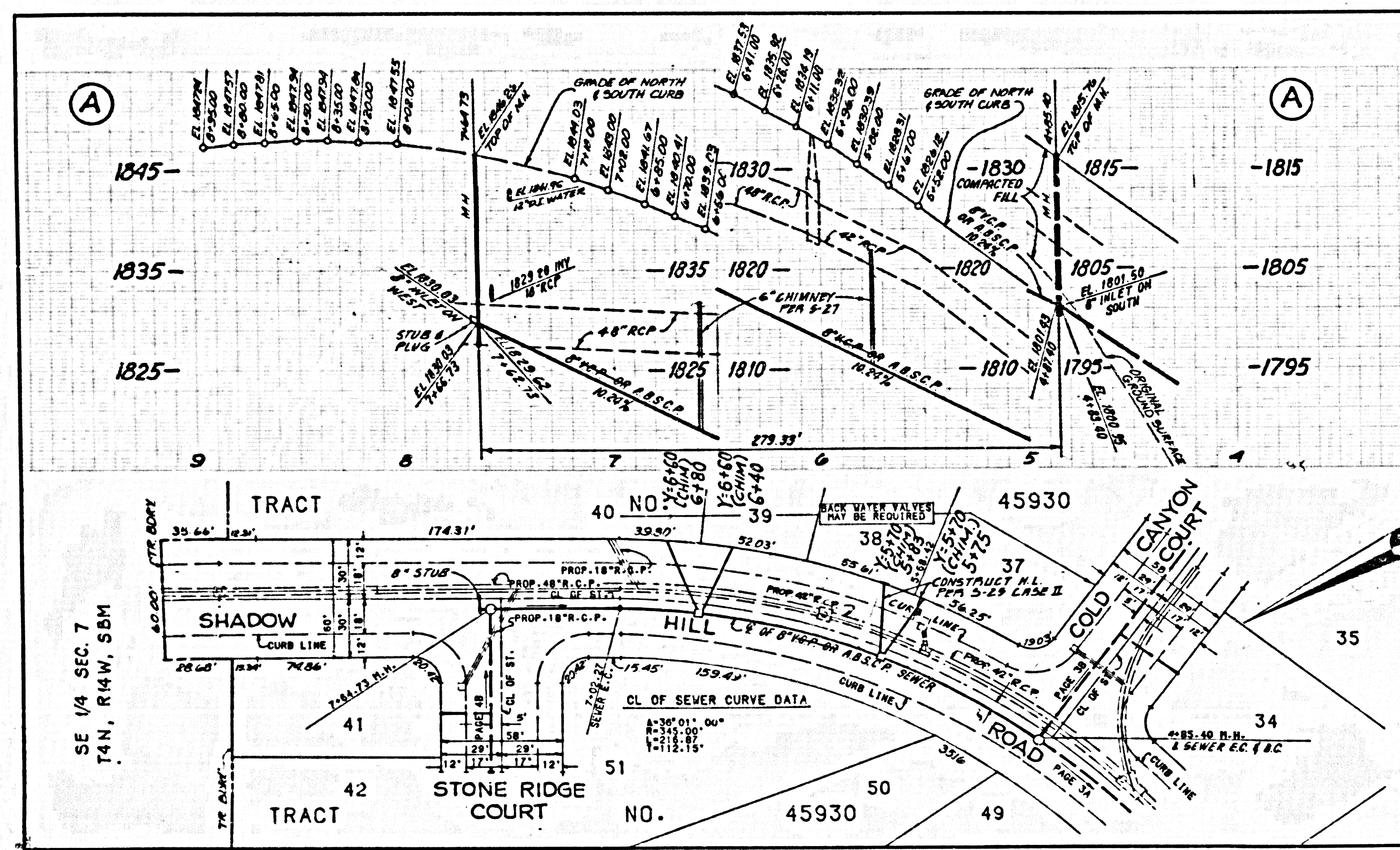
REVIEWED BY *Sally G. Harte* DATE 9/18/89

NO L.A. CO. CHARGE FOR CONNECTIONS
 DOUBLE SCALE
 SEE L.A. CO. SAN. DIST. FOR SPECIAL CONSTRUCTION CHARGES

P.C. 10853



PC 10853 PAGE 3
 REVIEWED BY G. L. [Signature] DATE 3/1/81
 NO L.A. CO. CHARGE FOR CONNECTIONS
 DOUBLE SCALE
 SEE L.A. CO. SAN. DIST. FOR SPECIAL CONNECTION CHARGES



PC 10853 PAGE 4
 REVIEWED BY G. L. [Signature] DATE 3/1/81
 NO L.A. CO. CHARGE FOR CONNECTIONS
 DOUBLE SCALE
 SEE L.A. CO. SAN. DIST. FOR SPECIAL CONNECTION CHARGES

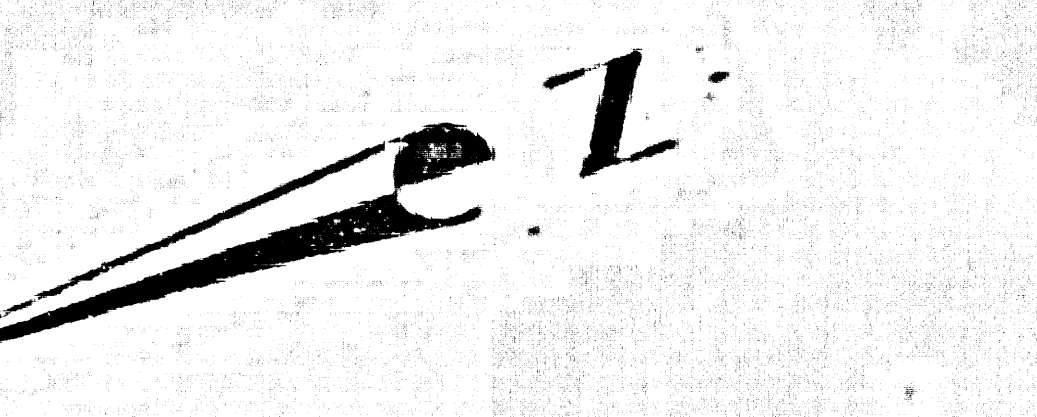
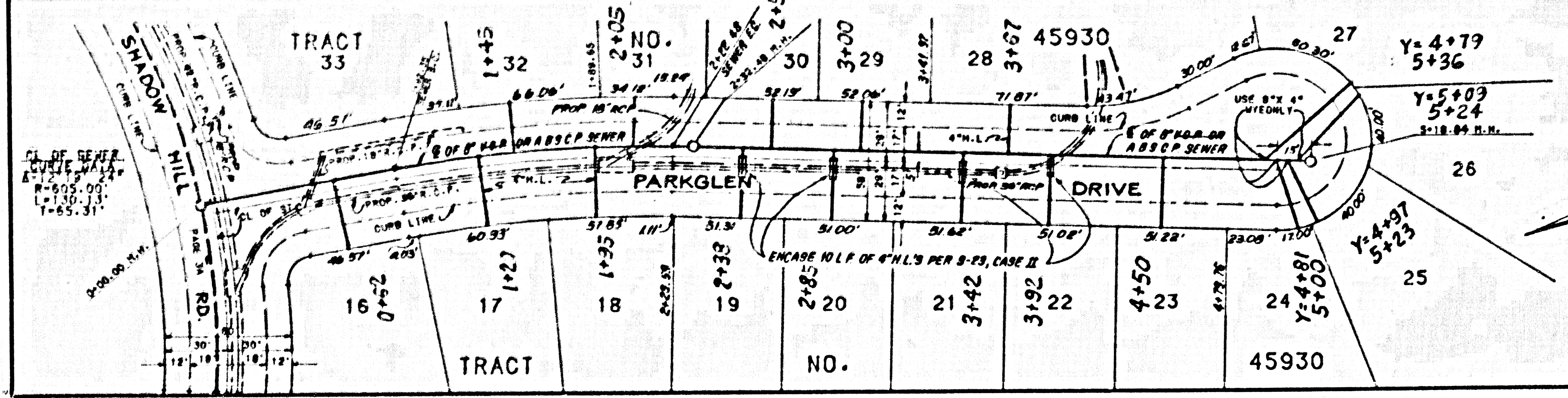
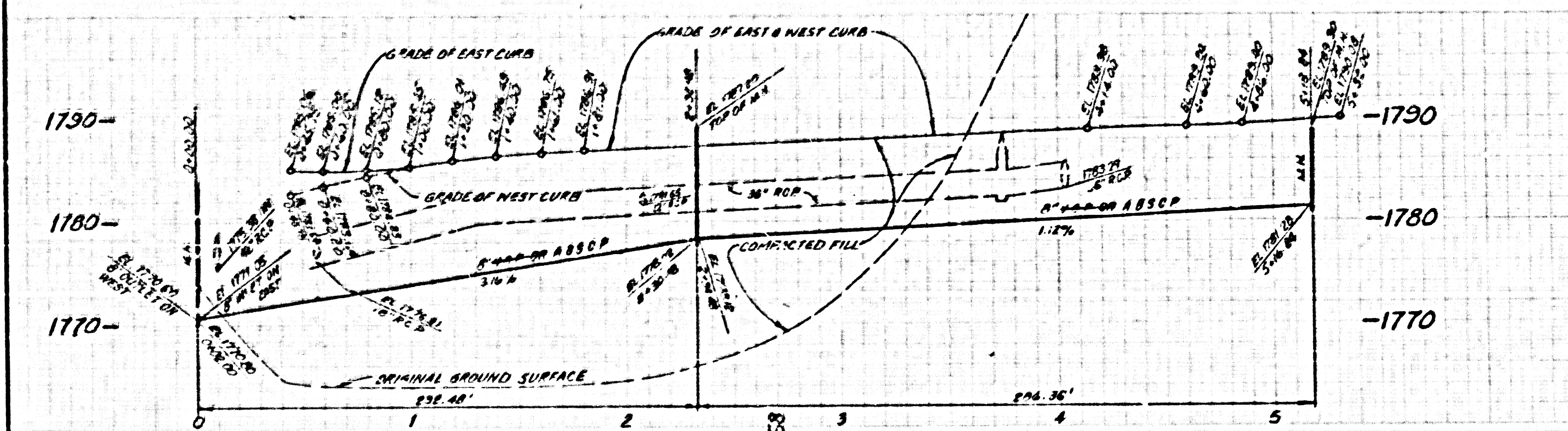
2801 24 3224 4232 4234 204 97

REVIEWED BY [Signature] DATE 11/19

NO L.A. CO. CHARGE FOR CONNECTIONS

DOUBLE SCALE

SEE L.A. CO. SAN. DIST. FOR SPECIAL CONNECTION CHARGES

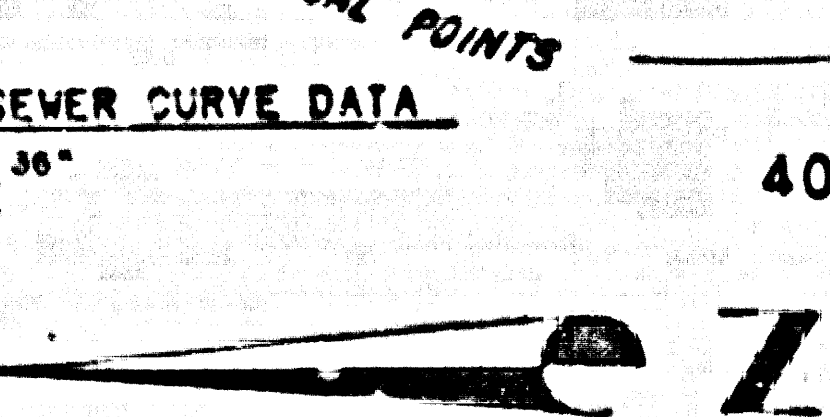
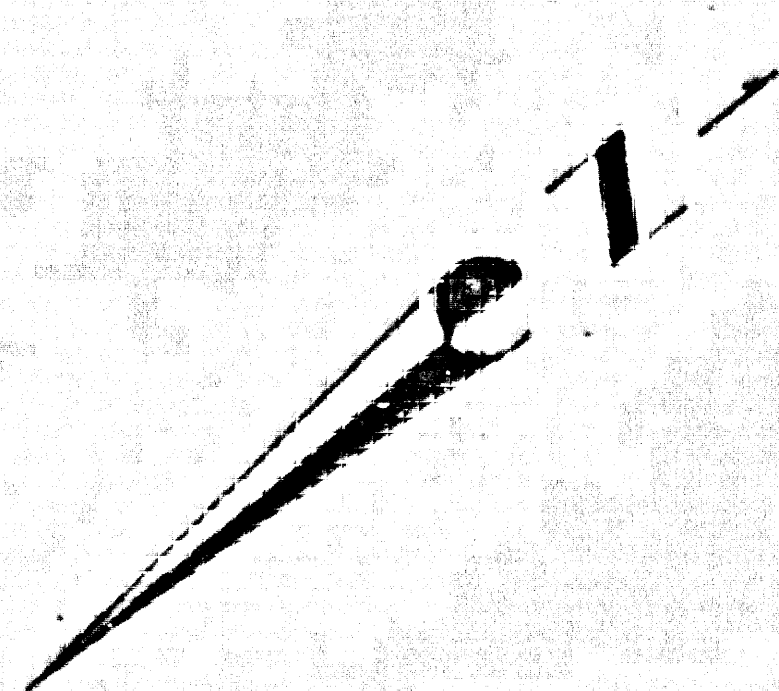
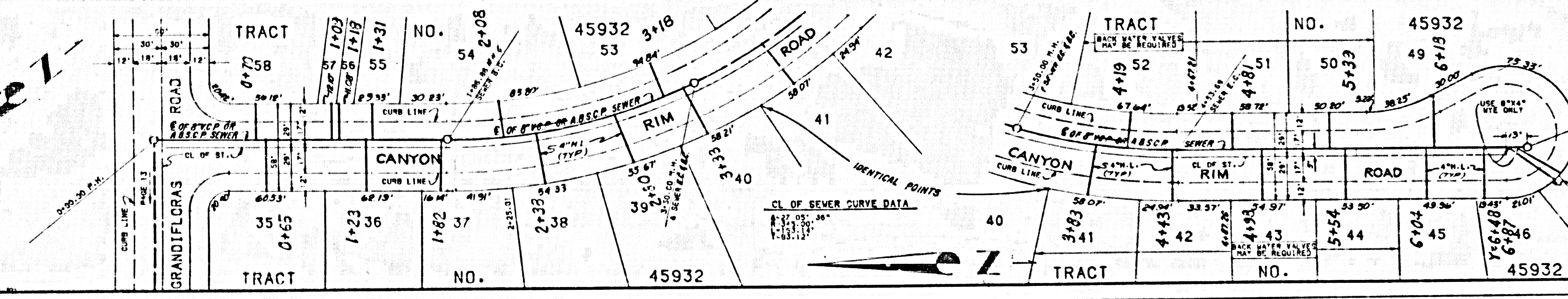
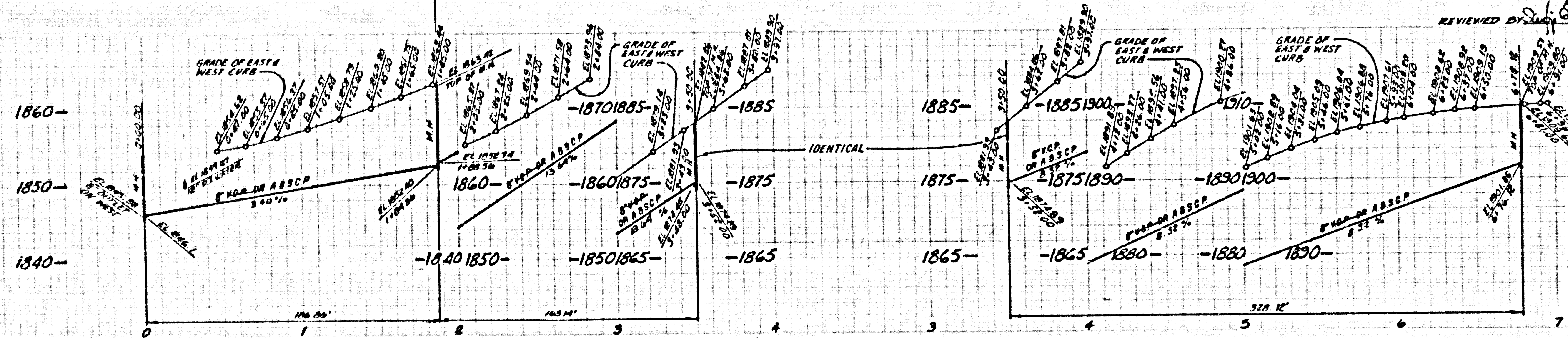


REVIEWED BY [Signature] DATE 9/17

NO L.A. CO. CHARGE FOR CONNECTIONS

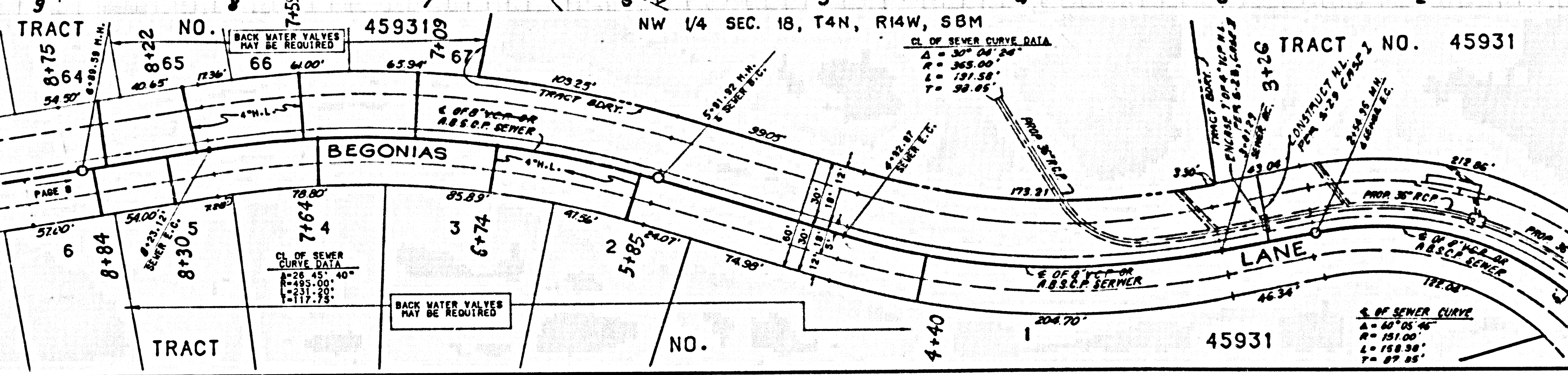
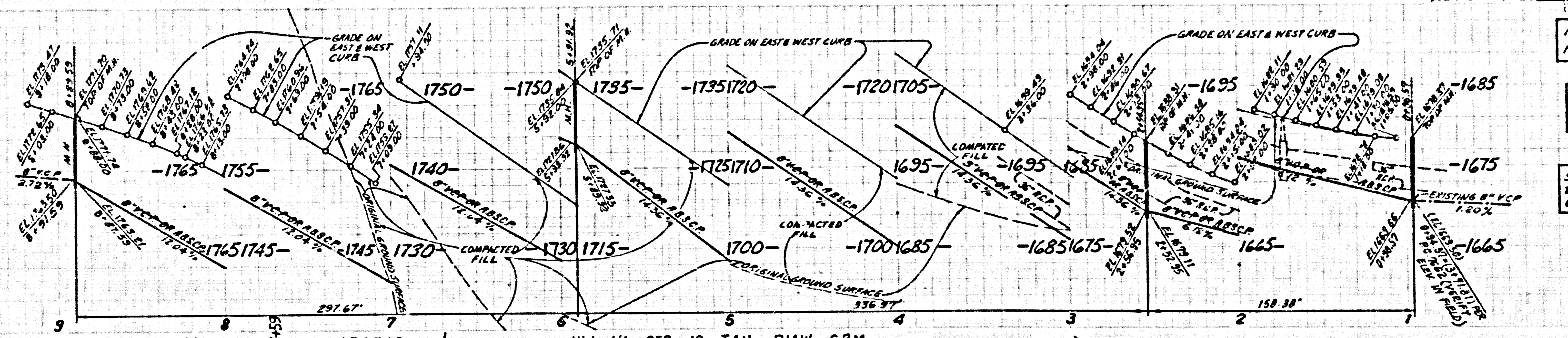
DOUBLE SCALE

SEE L.A. CO. SAN. DIST. FOR SPECIAL CONNECTION CHARGES



280129 5824 1894 0924 30M 9T

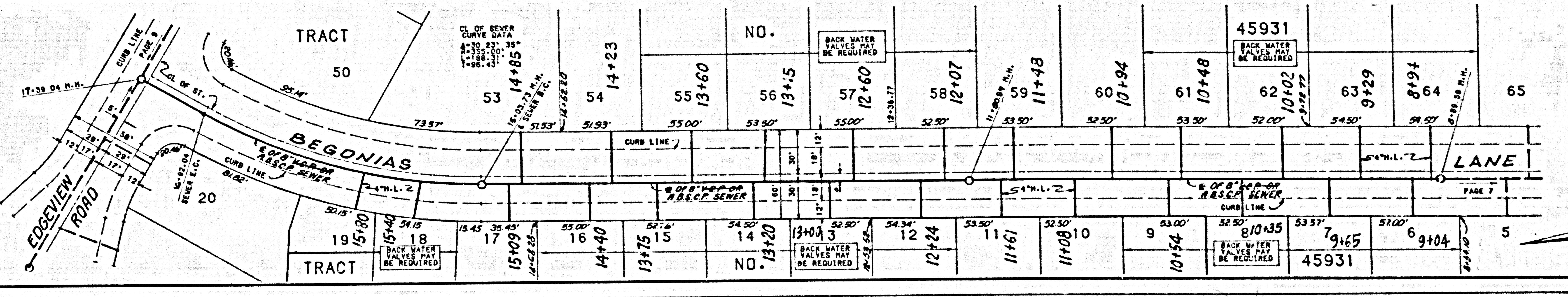
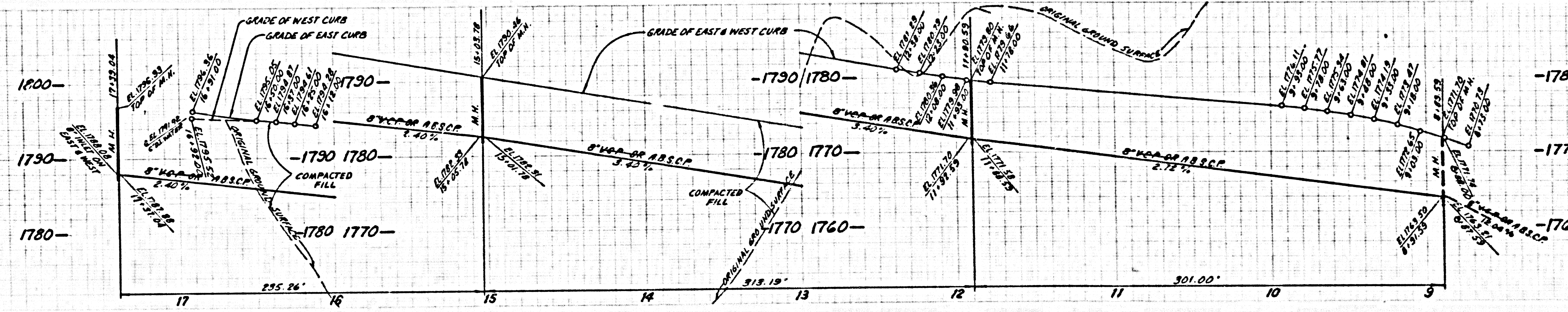
1775--
1765--
1755--



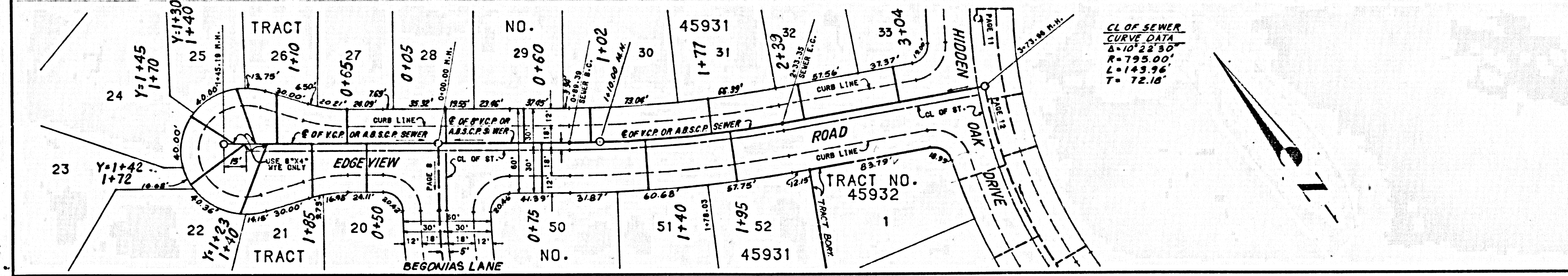
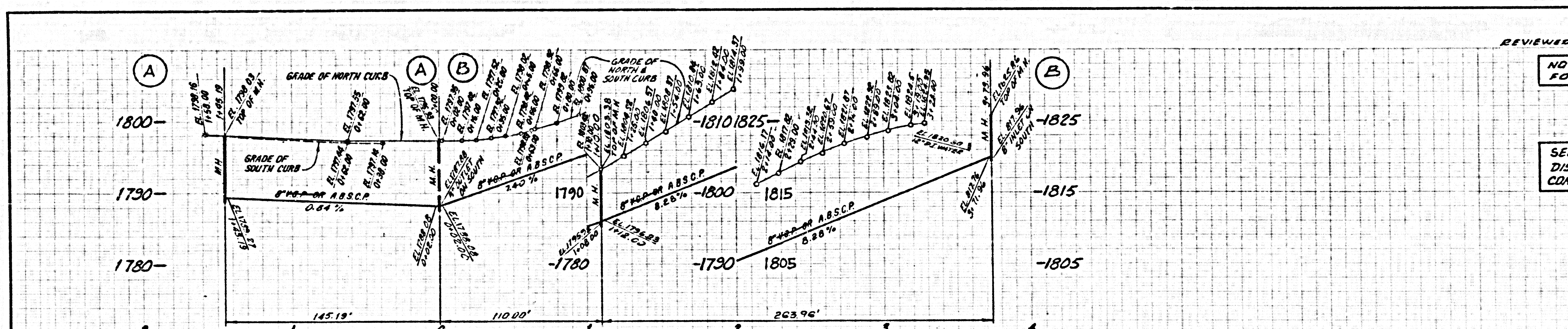
PC 10853 PAGE 7
REVIEWED BY *[Signature]* DATE 9/1/19
NO L.A. CO. CHARGE FOR CONNECTIONS
DOUBLE SCALE
SEE L.A. CO. SAN. DIST. FOR SPECIAL CONNECTION CHARGES

E2801 2A S2924 1E924 05924 23M 917

1800--
1790--
1780--



PC 10853 PAGE 8
REVIEWED BY *[Signature]* DATE 9/1/19
NO L.A. CO. CHARGE FOR CONNECTIONS
DOUBLE SCALE
SEE L.A. CO. SAN. DIST. FOR SPECIAL CONNECTION CHARGES

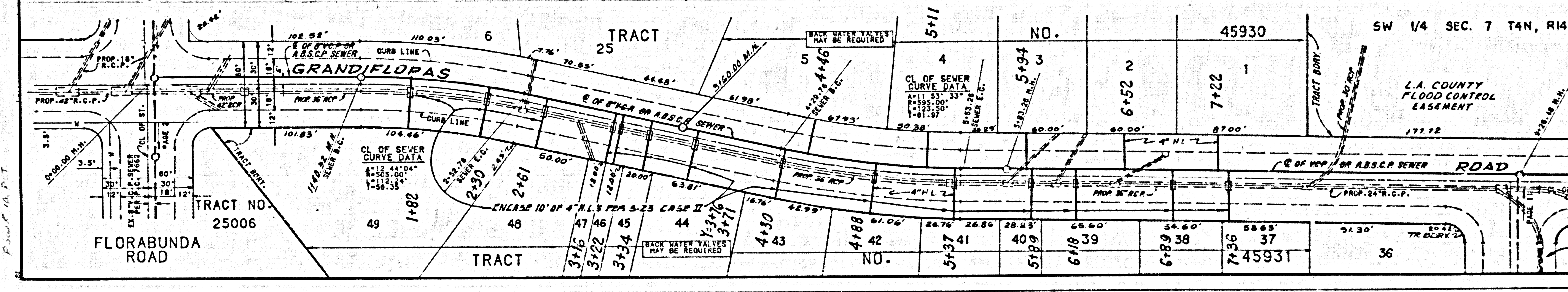
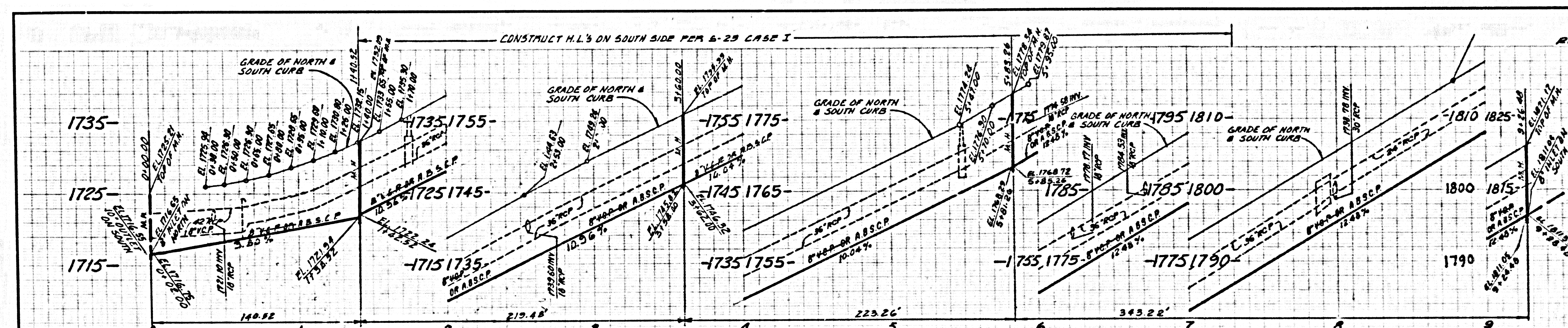


PC 10853 PAGE 9
 REVIEWED BY DATE 9/2/19

NO L.A. CO. CHARGE FOR CONNECTIONS

DOUBLE SCALE

SEE L.A. CO. SAN. DIST. FOR SPECIAL CONNECTION CHARGES



PC 10853 PAGE 10
 REVIEWED BY DATE 4/8/17

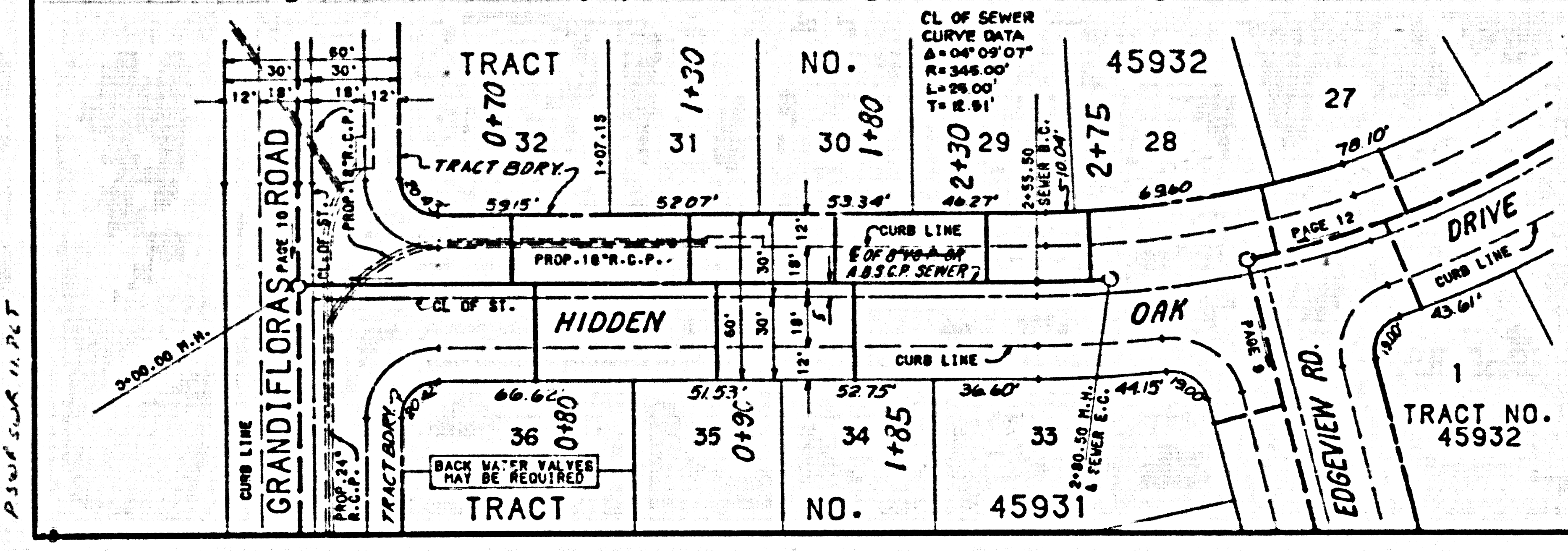
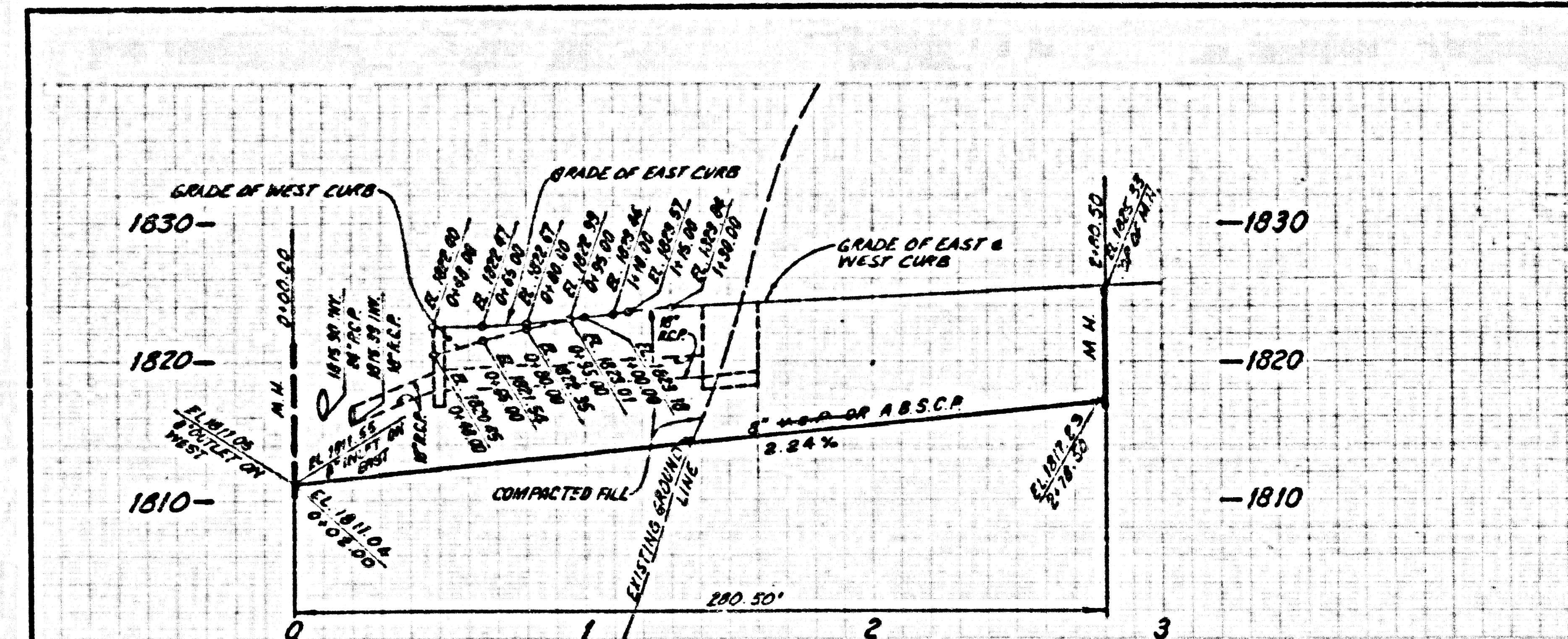
NO L.A. CO. CHARGE FOR CONNECTIONS

DOUBLE SCALE

SEE L.A. CO. SAN. DIST. FOR SPECIAL CONNECTION CHARGES

2

32801 03 SEP24 42835 60 10823

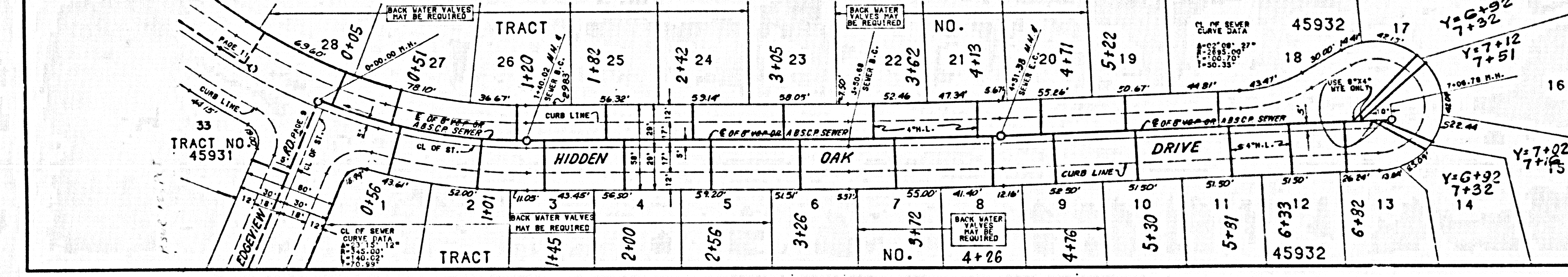
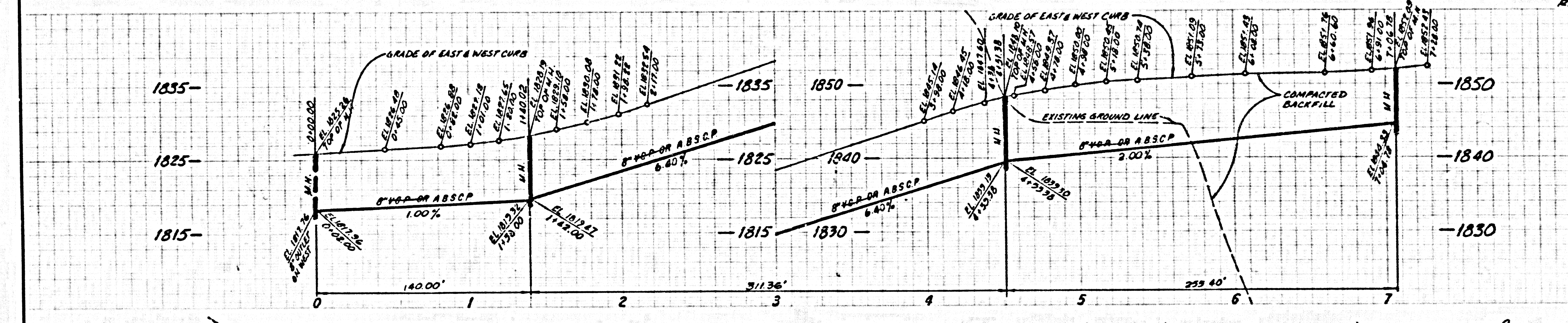
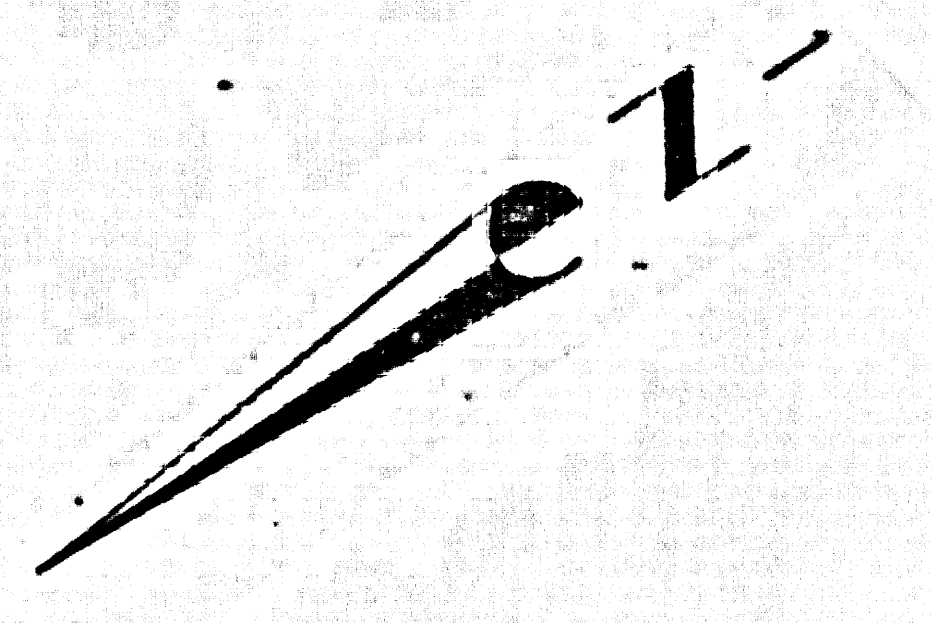


REVIEWED BY *S. G. G.* DATE *9/17/77* **PC 10853 PAGE 11**

NO L.A. CO. CHARGE FOR CONNECTIONS

DOUBLE SCALE

SEE L.A. CO. SAN. DIST. FOR SPECIAL CONNECTION CHARGES

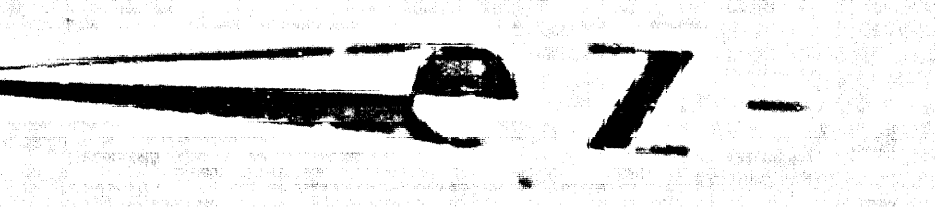


REVIEWED BY *S. G. G.* DATE *9/17/77* **PC 10853 PAGE 12**

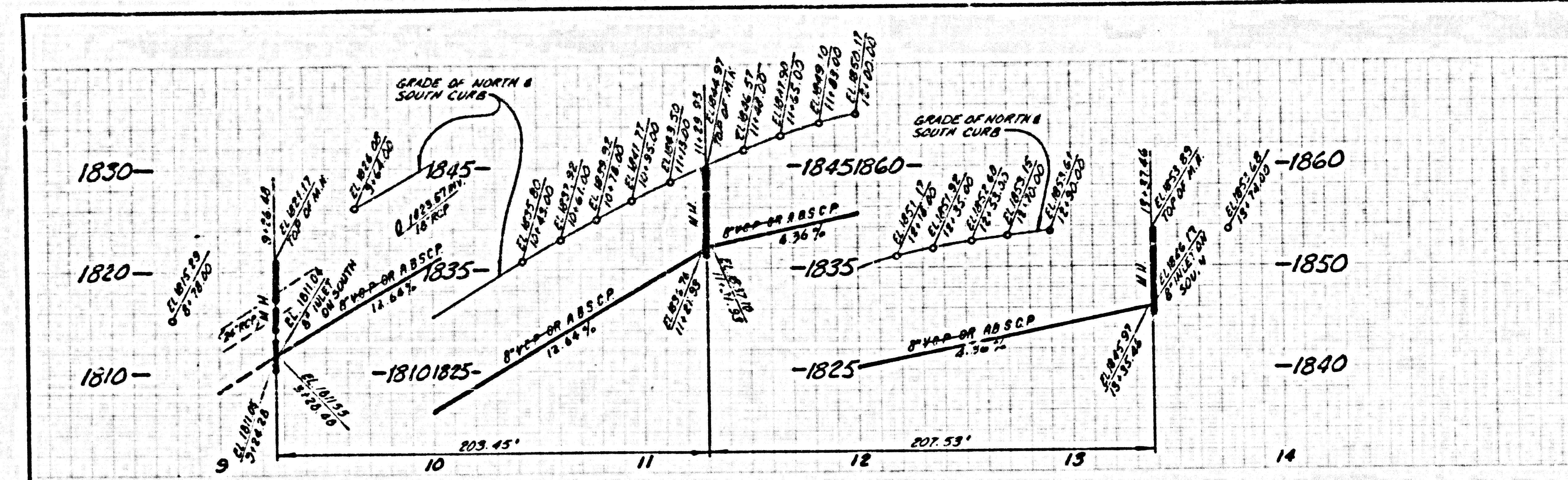
NO L.A. CO. CHARGE FOR CONNECTIONS

DOUBLE SCALE

SEE L.A. CO. SAN. DIST. FOR SPECIAL CONNECTION CHARGES



3801 D 9 53924 15924 05924 2501 SAT

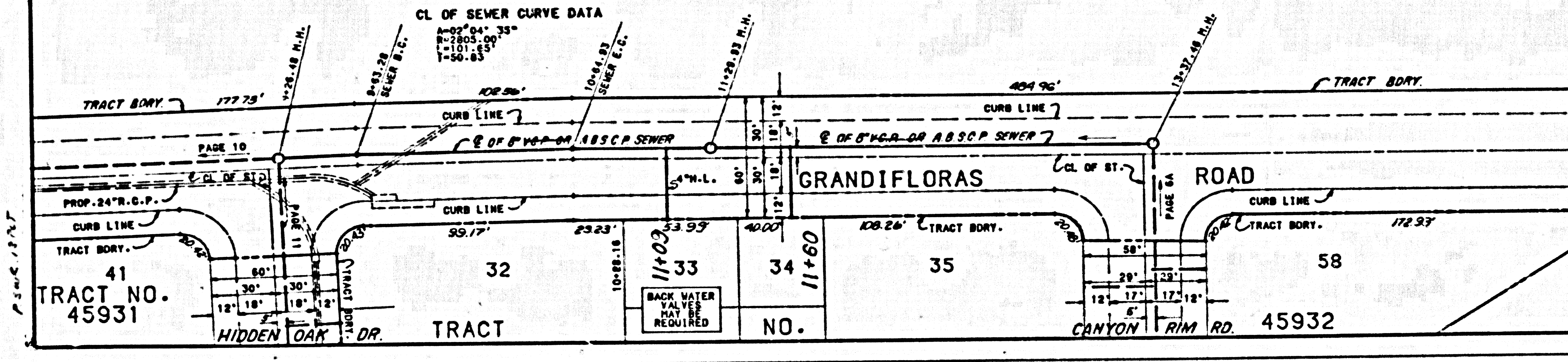


NO L.A. CO. CHARGE FOR CONNECTIONS

DOUBLE SCALE

SEE L.A. CO. SAN. DIST. FOR SPECIAL CONNECTION CHARGES

SW 1/4 SEC. 7 T4N, R14W S8M



CL OF SEWER CURVE DATA
 $\Delta = 50^{\circ}04'33''$
 $R = 1803.00'$
 $L = 50.83'$

TRACT NO. 41
 45931

TRACT NO. 32

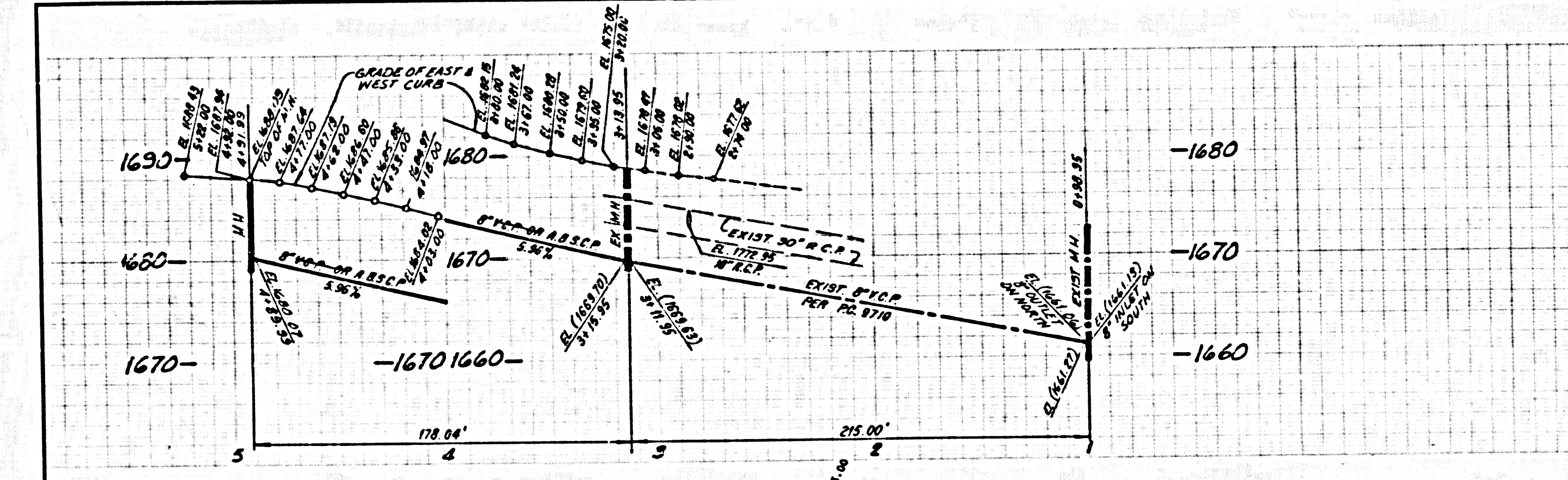
TRACT NO. 33

TRACT NO. 34

TRACT NO. 35

TRACT NO. 58

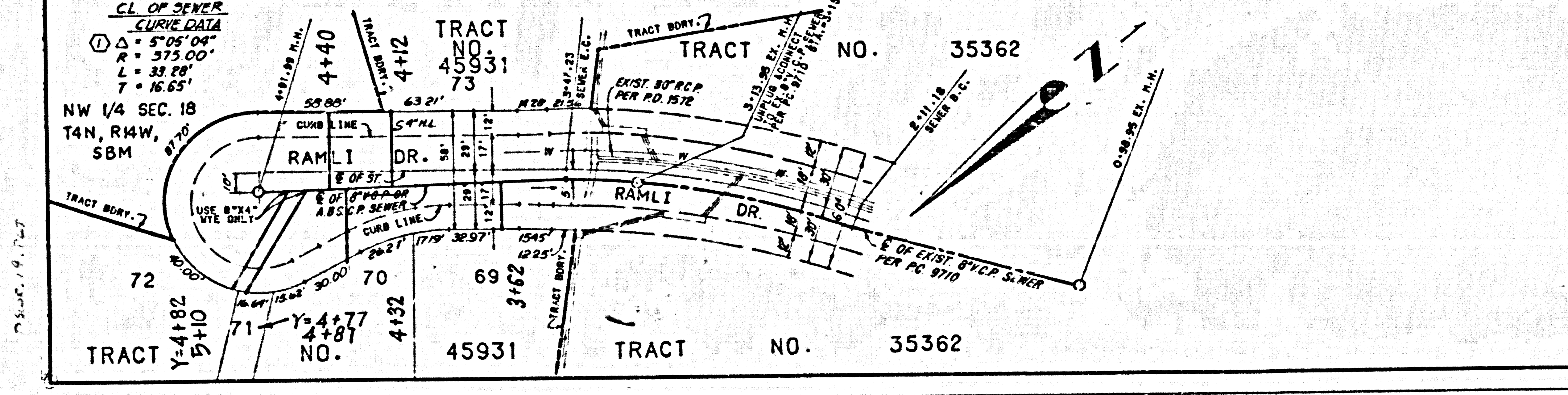
CANYON RIM RD. 45932



NO L.A. CO. CHARGE FOR CONNECTIONS

DOUBLE SCALE

SEE L.A. CO. SAN. DIST. FOR SPECIAL CONNECTION CHARGES



CL OF SEWER CURVE DATA
 $\Delta = 5^{\circ}05'04''$
 $R = 375.00'$
 $L = 33.78'$
 $T = 16.65'$

TRACT NO. 72

TRACT NO. 70

TRACT NO. 69

TRACT NO. 71

TRACT NO. 73

TRACT NO. 35362

TRACT NO. 45931

TRACT NO. 35362

1
 22801 09 SEP24 19924 06324 2011 97