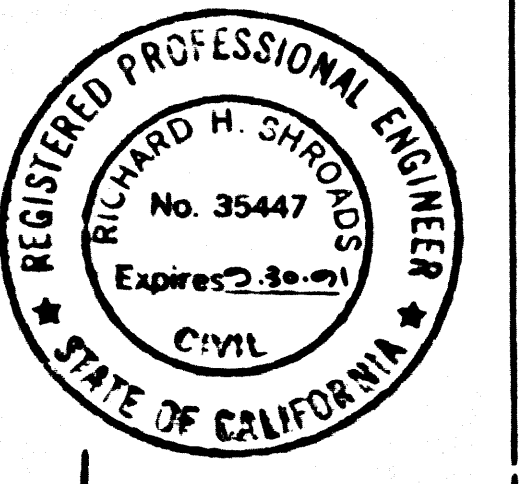
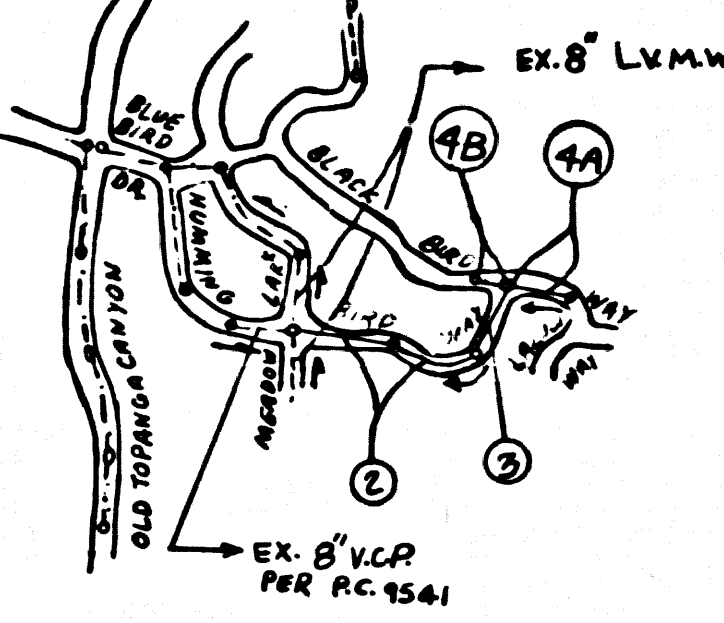


B.M. CY 9031 ELEV. 991.162  
 R.D.B.M. TAG IN CR 3 FT W/O BCR 43 FT  
 S/O C/L WRENCREST DR & 32 FT S/O  
 C/L OLD TOPANGA CWR RD  
 MALLIBU QUAD. 1980



REVISION No. 2 DATE 6/7/89  
 PAGE 2 : MOVED N.H. FROM 4+76.96 TO 4+38.84 AND REVISED CURVE DATA.  
 PAGE 3 AND 4 : REVISED LENGTH, ALIGNMENT, GRADE AND SURFACE OVER SEWER.  
 APPROVED: *James O. Dima* 4/12/89  
 DEPT. OF PUBLIC WORKS DATE  
 REVISION BY: CIVILIT ENGINEERING, INC.  
 135 E. LA PORTE ST., STE. E  
 ARCADIA, CA. 91006  
 (910) 446-8553  
*Richard Shroads* 6-8-89  
 RICHARD SHROADS R.C.E. 35447



INDEX MAP  
 SCALE: 1"=600'  
 P.C. 10872  
 HUMMINGBIRD WAY & BLACK BIRD WAY

**CONSTRUCTION NOTES CONT.**

- 17. MANHOLE WATER STOP GASKETS AND CLAMPS ARE REQUIRED FOR THE CONNECTION OF A B.S. COMPOSITE PIPE TO MANHOLE STRUCTURE.
- 18. A B.S. COMPOSITE PIPE MUST BE USED FOR WYE AND HOUSE LATERAL CONNECTIONS TO A B.S. COMPOSITE MANHOLE SEWER PIPE.
- 19. A B.S. COMPOSITE PIPE SHALL BE USED IN CONFORMANCE WITH THE TABLE IN SECTION 101.1 OF PART IV OF THE STANDARD SPECIFICATIONS.
- 20. THREE DEGREE DEFLECTION COUPLERS ARE REQUIRED FOR RADIUS OF CURVATURE LESS THAN 30 FEET WHEN USING A B.S. COMPOSITE PIPE.
- 21. NO CONNECTIONS FOR DISPOSAL OF INDUSTRIAL WASTE ARE ALLOWED IF A B.S. COMPOSITE PIPE IS USED.
- 22. SEWER LINE CURVATURE SHALL NOT BE EXCEEDED BY PULLING THE POINTS OR BEVELING PIPE ENDS WHEN USING PLASTIC PIPE INCLUDING A B.S. COMPOSITE PIPE.
- 23. ALL WYE AND HOUSE LATERALS ARE TO BE LOCATED AT LEAST FIVE FEET FROM THE MAIN LINE AND WHEN POSSIBLE NOT CLOSER THAN FIVE FEET TO ANY MANHOLE.
- 24. A B.S. COMPOSITE PIPE IS NOT ACCEPTABLE FOR USE AS MANHOLE SEWER.

BEFORE EXCAVATION WHICH WILL EXPOSE THE EXISTING WATERLINE, OR EXCAVATION TO JOIN EXISTING L.V.M.W.D. TRUNK SEWER, CONTACT L.V.M.W.D. SEWER MAINTENANCE SUPERVISOR, BILL THORNTON, AT TELEPHONE (818) 344-1207 TO ARRANGE FOR INSPECTION.

DO NOT REMOVE SOIL SUPPORTING VALVES OR FITTINGS ON ADDITION-CEMENT WATERLINE. NO MORE THAN 8 FEET OF A.C. PIPE ARE TO BE EXPOSED IN CONTINUOUS RUN. EXPOSED PIPE MUST BE SUPPORTED BY VERTICAL SUPPORT (STRUTS/BACKS). ANY SUPPORTS OR STRUTS MUST BE PROVIDED WITH LATERAL RESTRAINT. POT HOLES EXISTING WATERLINES AT CROSSING POINTS TO VERIFY EXACT LOCATION BEFORE STARTING TRENCH EXCAVATION.

REVISION No. 1 DATE 5/17/89  
 (ADDITION OF TWO HOUSE LATERALS TO SERVE LOTS 54 AND 55 REVISION ON PAGE 3.)

APPROVED: *Sam G. Holt* 5/12/89  
 DEPT. OF PUBLIC WORKS

**GENERAL NOTES:**

- 1. ELEVATIONS ARE IN FEET ABOVE U.S.C. & G.S. SEA LEVEL DATUM OF 1989.
- 2. NO REVISIONS SHALL BE MADE IN THESE PLANS WITHOUT THE APPROVAL OF THE PUBLIC WORKS DEPARTMENT.
- 3. NO REPRESENTATIVE OF THE DEPT. OF PUBLIC WORKS WILL SURVEY OR LAY OUT ANY PORTION OF THE WORK.
- 4. GRADES TO WHICH THIS IMPROVEMENT IS TO BE CONSTRUCTED ARE SHOWN ON PLANS AND PROFILES. GRADE POINTS FOR TOP OF CURBS, CENTER LINE OF STREETS, OR CENTER LINE OF ALLEYS ARE SHOWN BY CIRCLES ON PROFILES AT ALL POINTS BETWEEN DESIGNATED POINTS. THE GRADE SHALL BE ESTABLISHED SO AS TO CONFORM TO A STRAIGHT LINE DRAWN BETWEEN SAID DESIGNATED POINTS.
- 5. THE PRIVATE ENGINEER SHALL FURNISH THE DEPT. OF PUBLIC WORKS WITH GRADE SHEETS AND STATIONING FOR ALL HOUSE LATERALS AND "T" OR "Y" BRANCHES AND SHALL PROVIDE STAKES FOR THEM AT THEIR PROPER LOCATIONS WITH STATIONING PLAINLY MARKED. ALL HOUSE LATERALS SHALL BE CONSTRUCTED IN A STRAIGHT ALIGNMENT AT RIGHT ANGLES FROM THE MAIN LINE SEWER EXCEPT AS SHOWN ON THE PLANS. HOUSE LATERALS FROM CHIMNEYS SHALL NOT HAVE AN ANGLE OF LESS THAN 45° WITH THE MAIN LINE SEWER. ANY CHANGE IN ALIGNMENT SHALL BE REQUESTED IN WRITING BY THE PRIVATE ENGINEER.
- 6. THE PRIVATE ENGINEER SHALL FURNISH THE HOUSE LATERAL DEPTH AT THE PROPERTY LINE, BELOW THE TOP OF CURB ELEVATION FOR EACH HOUSE LATERAL ON THE GRADE SHEET.
- 7. BEFORE WORK CAN BE STARTED, THE CONTRACTOR MUST OBTAIN A PERMIT TO EXCAVATE COUNTY STREETS FROM THE CONST. DIV. OF PUBLIC WORKS, 900 S. FREMONT, ALB. LA. 91803, 8TH FLOOR, TO COVER THE COST OF CONST. INSPECTION AND RECORD PLANS.
- 8. IF WORK IS TO BE DONE IN A STATE HIGHWAY, A PERMIT MUST BE OBTAINED FROM THE STATE OF CALIFORNIA, DIVISION OF HIGHWAYS, 120 SOUTH SPRING STREET, LOS ANGELES, CALIFORNIA.
- 9. APPROVAL OF THIS PLAN BY THE COUNTY OF LOS ANGELES DOES NOT CONSTITUTE A REPRESENTATION AS TO THE ACCURACY OF THE LOCATION OR OF THE EXISTENCE OR NON-EXISTENCE OF ANY UNDERGROUND UTILITY PIPE, OR STRUCTURE WITHIN THE LIMITS OF THIS PROJECT. THIS NOTE APPLIES TO ALL PAGES.
- 10. REFER TO SECTION 710.4.1 OF THE STANDARD SPECIFICATIONS, REGARDING SAFETY ORDERS.
- 11. PRIOR TO THE ISSUANCE OF THE REQUIRED SEWER CONSTRUCTION PERMIT, THE CONTRACTOR SHALL OBTAIN AND FILE WITH THE DEPT. OF PUBLIC WORKS COPIES OF A PERMIT TO EXCAVATE COUNTY STREETS FROM THE CONST. DIVISION AT THE BUREAU OF PUBLIC WORKS, A PERMIT FOR EXCAVATION AND TRENCHES FROM THE STATE OF CALIFORNIA DIVISION OF INDUSTRIAL SAFETY AND A CERTIFICATE OF WORKER'S COMPENSATION INSURANCE WITH THE DEPARTMENT OF PUBLIC WORKS, ROOM 5, 122 SOUTH AVENUE, PASADENA, CALIF. 91103, 8TH FLOOR, NAMED AS THE CERTIFICATE HOLDER TO NOTIFIED 30 DAYS PRIOR TO CANCELLATION OF POLICY.

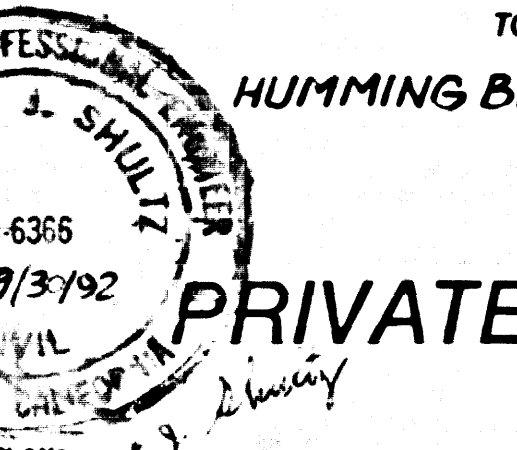
**CONSTRUCTION NOTES:**

- 1. WORK SHALL BE CONSTRUCTED ACCORDING TO THE STANDARD SPECIFICATIONS FOR PUBLIC WORKS CONSTRUCTION (1978 ED. AND SUPP. BY P.W.D.). SPECIAL PROVISIONS FOR THE CONSTRUCTION OF SANITARY SEWERS DATE FEB. 21, 1979 AND SHALL BE PROSECUTED ONLY IN THE PRESENCE OF THE DEPT. OF PUBLIC WORKS.
- 2. THE CONTRACTOR SHALL NOTIFY THE CONSTRUCTION DIV. BY TELEPHONE (818) 344-1207 AT LEAST 24 HOURS BEFORE STARTING ANY WORK UNDER THIS CONTRACT.
- 3. HOUSE LATERALS TO BE CONSTRUCTED WITH INVERTS AT PROPERTY LINE 8 FEET BELOW CURB GRADE EXCEPT AS NOTED.
- 4. WYE OR TEE BRANCHES MAY BE USED FOR CONNECTIONS TO MAINLINE SEWERS EXCEPT AS NOTED.
- 5. WYE BRANCHES ONLY MAY BE USED FOR CONNECTIONS TO MAINLINE SEWERS IF A B.S.C.P. IS USED.
- 6. ALL STRUCTURES SHALL BE EITHER BRICK MANHOLES OR PRECAST CONCRETE MANHOLES PER S-38, EXCEPT AS NOTED.
- 7. PROVIDE STAKES ON THE PROPERTY LINE OR PROPERTY LINES PRODUCED AT RIGHT ANGLES TO THE SEWER LINE AT THE CENTER LINE OF EACH MANHOLE.
- 8. MANHOLE TOPS IN UNIMPROVED PORTIONS OF WAY TO BE SIX INCHES ABOVE FINISHED GRADE.
- 9. WITHIN CLAY PIPE JOINTS SHALL BE TYPE "D" OR "10" PER STANDARD SPECIFICATIONS SECTION 208-2.
- 10. IF A POWER POLE IS WITHIN THREE FEET OF THE SEWER, THE SEWER SHALL BE ENCASED PER S-23, CASE 2, TWO FEET ON EACH SIDE FROM THE POINT OF INTERFERENCE.
- 11. IF DURING THE COURSE OF CONSTRUCTION IT IS DETERMINED THAT THERE IS LESS THAN FOUR FEET OF COVER OVER THE TOP OF A MAINLINE OR HOUSE LATERAL SEWER WHICH IS NOT INDICATED ON THE PLANS, THE PIPE SHALL BE ENCASED PER S-23, CASE 2 UNLESS OTHERWISE APPROVED BY THE DEPT. OF PUBLIC WORKS.
- 12. ALL JOINTS BETWEEN CAST IRON PIPE AND WITNEFFED CLAY PIPE SHALL BE MADE WITH A RUBBER SLEEVE JOINT, TYPE "C" OR "D" (WITH BUSHING IF NECESSARY) PER STANDARD SPECIFICATIONS SECTION 208-2.
- 13. ALL JOINTS BETWEEN CAST IRON PIPE & A.B.S.C.P. SHALL BE MADE WITH APPROVED FITTINGS.
- 14. SEWERS TO BE TESTED FOR LEAKAGE PER SECTION 208-1.4 OF THE STANDARD SPECIFICATIONS AND SPECIAL PROVISIONS.
- 15. RESURFACE ALL TRENCHES WITHIN PAVED AREAS TO MEET LA COUNTY ROAD DEPT. OR CALIFORNIA STATE HIGHWAY REQUIREMENTS IN ACCORDANCE WITH PERMITS.
- 16. FULL COMPLIANCE WITH SECTION 208-1.3.4 OF THE STANDARD SPECIFICATIONS WILL BE REQUIRED FOR BACKFILL IN STREETS. CERTIFICATION OF BACKFILL COMPACTION AND SAND EQUIVALENTS BY A QUALIFIED REGISTERED TESTING LABORATORY SHALL BE PROVIDED BY THE PERMITTEE PRIOR TO THE ISSUANCE OF A CERTIFICATE OF PARTIAL ACCEPTANCE.
- 17. SPECIAL BACKFILL IN EASEMENT CONSTRUCTION (A) BACKFILL TRENCH AND REPLACE OTHER EARTH SO AS TO ACHIEVE THE NATURAL OR FINISHED GRADES AND SLOPES SHOWN ON THE GRADING PLAN APPROVED FOR THIS DEVELOPMENT BY THE LAND DEVELOPMENT DIVISION. (B) ALL BACKFILL AND EARTH REPLACED SHALL BE COMPACTED TO A MINIMUM OF 90% OF MAXIMUM DENSITY PER A.S.T.M. STD. METHOD OF TEST D959 BY AS MOVED ACCEPTABLE CERTIFICATION OF SUCH COMPACTION SHALL BE SUBMITTED TO THE CONSTRUCTION DIV. OF PUBLIC WORKS DEPT.

DOUBLE SCALE

PROFILE, ALIGNMENT AND GRADE OF  
**SANITARY SEWERS**

TO BE CONSTRUCTED IN  
**HUMMINGBIRD WAY & BLACKBIRD WAY**



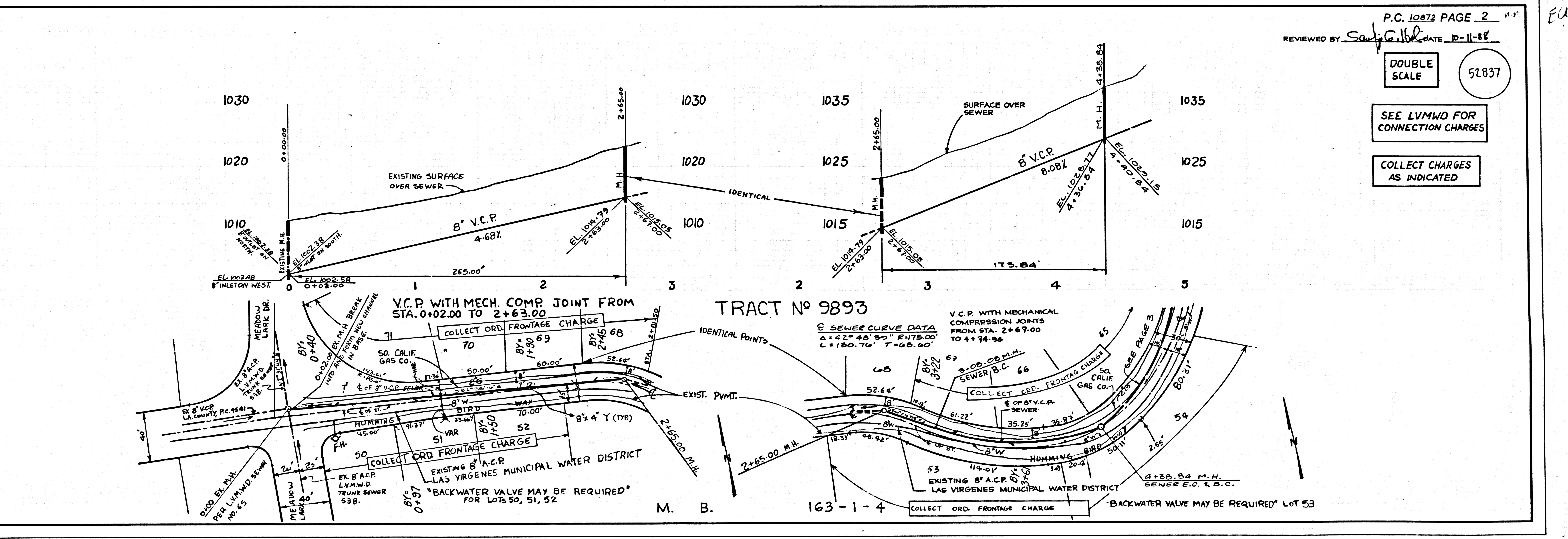
PRIVATE CONTRACT NO. 10872

2 SHEETS, 4 PAGES  
 SCALE: VERT. 1"=6'  
 HORIZ. 1"=60'  
 MARCH, 1988  
 PREPARED IN THE OFFICES OF  
 ED. KRENZ CORP.  
 740 S. COLORADO BLVD.  
 PASADENA, CALIF. 91106  
 PHONE: (818) 584-6535  
 BY: *Richard Shroads*  
 REG. C.E. No. 6366 EXP. DATE 7/30/92

THE FOLLOWING LATEST REVISED STANDARD PLANS ON FILE IN THE OFFICE OF THE DEPARTMENT OF PUBLIC WORKS SHALL APPLY IN THE CONSTRUCTION OF THIS PROJECT:

LEGEND	S-1
MINIMUM PUBLIC SAFETY REQUIREMENTS	S-2
BRICK MANHOLE	S-3
STANDARD MANHOLE STEP	S-4
BEDDING FOR SEWER PIPE	S-5
CHOKING AND ENCASUREMENT	S-6
PIPE ON TEE SUPPORT	S-7
ALLOWABLE TRENCH WIDTHS	S-8
LOCKING MANHOLE FRAME AND COVER	S-9
NON-REINFORCED PRECAST CONCRETE MANHOLE	S-38

COUNTY OF LOS ANGELES, CALIFORNIA  
 THOMAS A. TIDEMANSON, DIRECTOR  
 DEPARTMENT OF PUBLIC WORKS  
 APPROVED: *James O. Dima* 10/17/88  
 LAG VIRGENES MUNICIPAL WATER DIST.  
 APPROVED: *Thomas A. Tideman* 11/21/88  
 CHECKED: *James O. Dima* 10-17-88  
 REG. C.E. NO. 18116  
 CALABASAS BLDG. DIST. 9-1



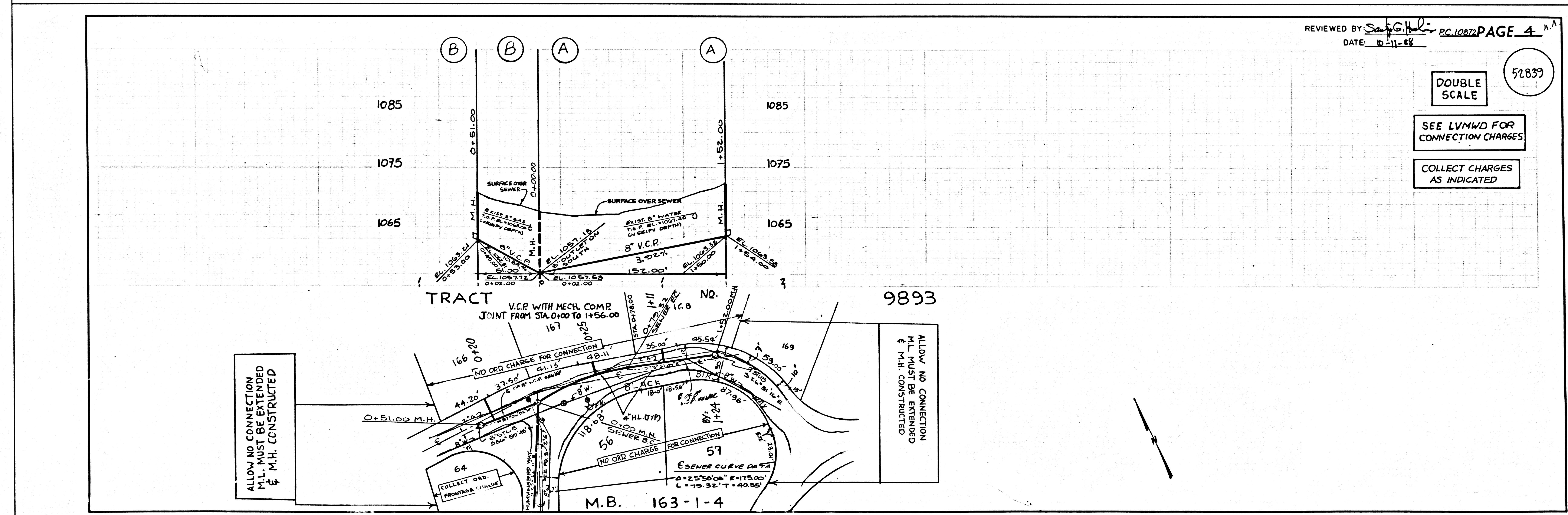
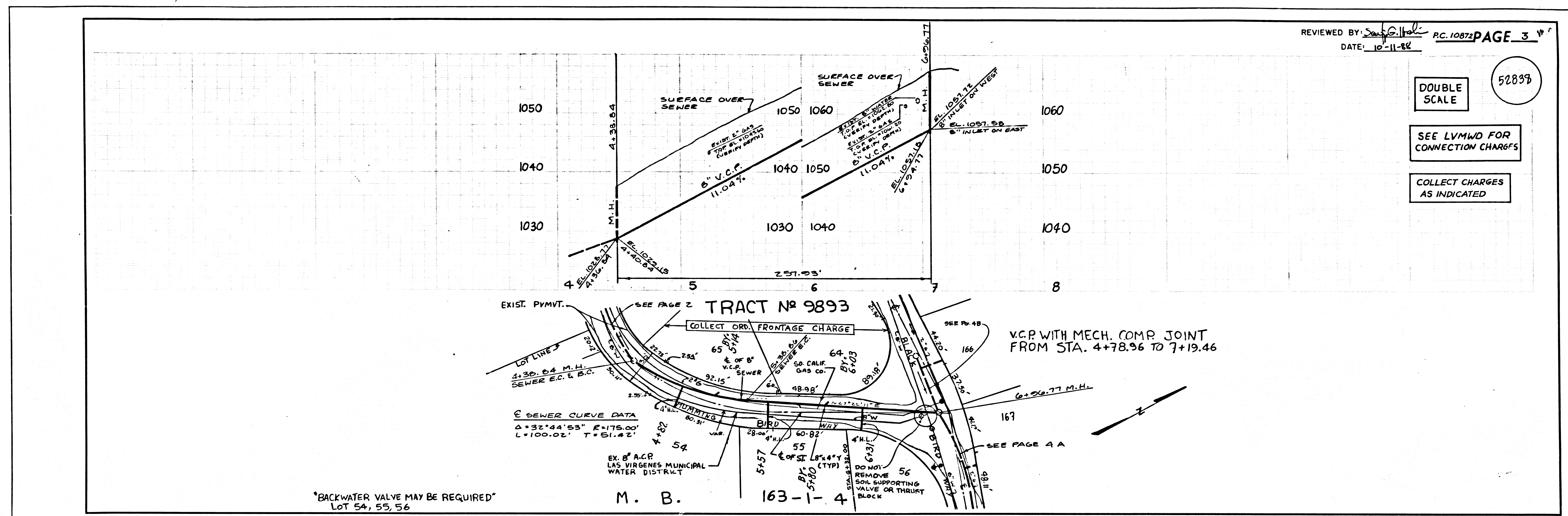
P.C. 10872 PAGE 2  
 REVIEWED BY: *Sam G. Holt* DATE 10-11-88

DOUBLE SCALE  
 52837

SEE LVMWD FOR CONNECTION CHARGES

COLLECT CHARGES AS INDICATED

17801 CB YAW GIBBARD & YAW GIBBARD  
 52837



52839  
bc 10815  
HDM/KM/BIBD/MVA & BRACK/BSD/MVA

52839  
bc 10815