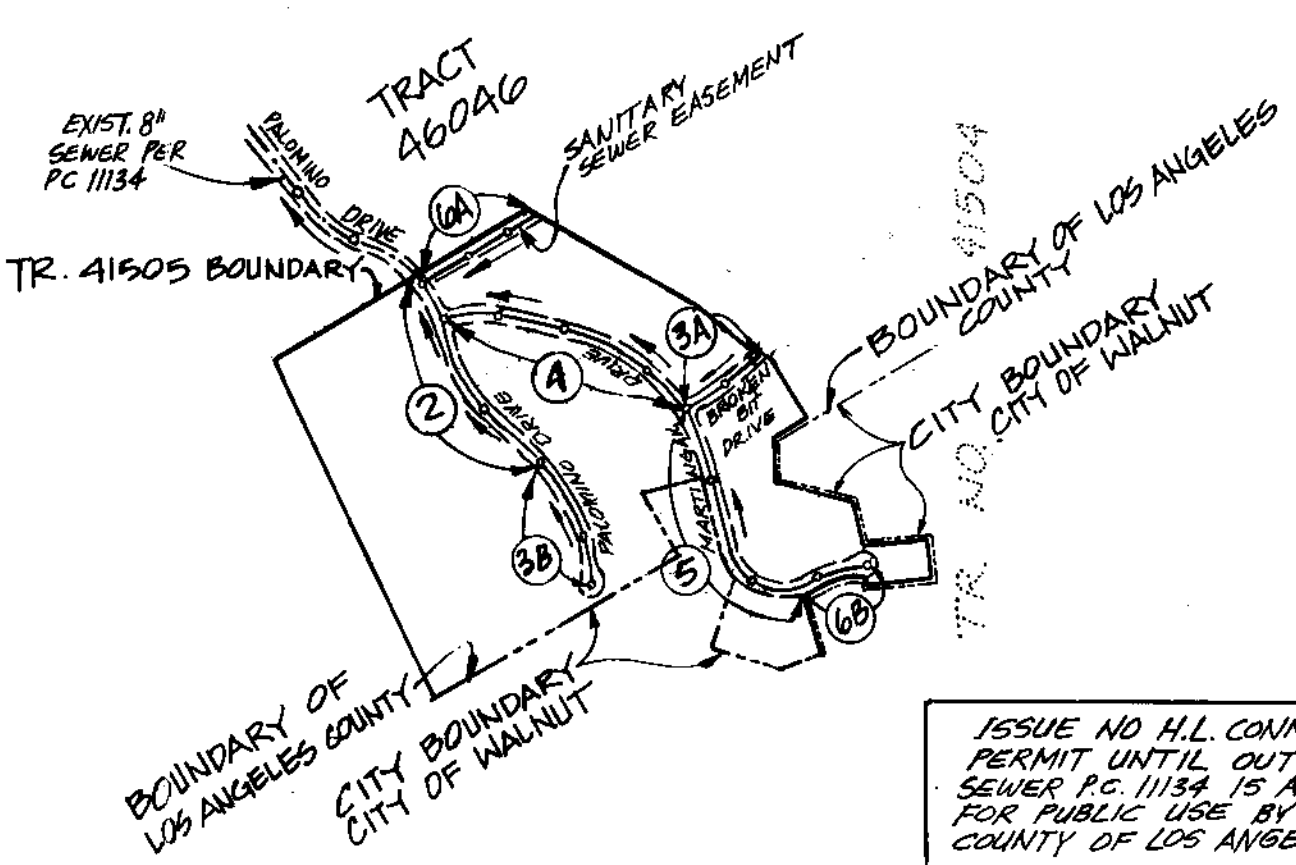


B.M. CG 2712 ELEV. 786.307  
 RD. B.M. TAG IN N'LY CURB OF CATCH BASIN  
 ON N.E. CORNER OF GRAND AVE. AND  
 MOUNTAINEER ROAD 30 FT. N. AND 90 FT. E.  
 OF APPROX. C.L. INT.  
 COVINA QUAD. 1980



ISSUE NO. H.L. CONNECTION  
 PERMIT UNTIL OUTLET  
 SEWER P.C. 1134 IS ACCEPTED  
 FOR PUBLIC USE BY THE  
 COUNTY OF LOS ANGELES

REVISION NO. 1 DATE: 3/11/92  
 REVISED SEWER EROSION PROTECTION LIMITS  
 PAGE 6A (ELIMINATED EROSION PROTECTION FROM  
 STA. 12+8.00 TO STA. 12+85.00)  
 APPROVED: S. G. [Signature] 3/9/92 R.C.E. No. 93134  
 OFFICE OF DIRECTOR OF PUBLIC WORKS

NOTE  
 1. NUMBERS IN CIRCLES  
 INDICATE PAGE NUMBERS.  
 2. ALL STREETS IN TRACT ARE PRIVATE  
 STREET SANITARY SEWER EASEMENTS  
**INDEX MAP**  
 PC. 10882  
 TRACT NO. 41505  
 SCALE: 1" = 600'  
 T.G. 93-B2

**CONSTRUCTION NOTES:**

- PROVIDE SURVEY STAKES ON THE PROPERTY LINE OR PROPERTY LINES PRODUCED AT RIGHT ANGLES TO THE SEWER LINE AT THE CENTERLINE OF EACH MANHOLE
- VITRIFIED CLAY PIPE JOINTS SHALL BE TYPE "D" OR "G" PER STANDARD SPECIFICATIONS SECTION 208.2
- IF A POWER POLE IS WITHIN THREE FEET OF THE SEWER, THE SEWER SHALL BE ENCASED PER STANDARD PLAN S-33, CASE II, "FOOT FEET ON EACH SIDE FROM THE POINT OF INTERFERENCE"
- ALL JOINTS BETWEEN CAST IRON PIPE AND VITRIFIED CLAY PIPE SHALL BE MADE WITH A RUBBER SLEEVE JOINT, TYPE "D" WITH BUSHING IF NECESSARY PER STANDARD SPECIFICATIONS SECTION 208.2
- HOUSE LATERALS TO BE CONSTRUCTED WITH "W" RISE/FT. TO THE EDGE OF THE RW LINE
- WYE OR TEE BRANCHES MAY BE USED FOR CONNECTIONS TO MAINLINE SEWERS EXCEPT AS NOTED
- IF DURING THE COURSE OF CONSTRUCTION, IT IS DETERMINED THAT THERE IS LESS THAN FOUR FEET OF COVER OVER THE TOP OF A MAINLINE OR HOUSE LATERAL V.C.P. SEWER WHICH IS NOT INDICATED ON THE PLANS, THE PIPE SHALL BE ENCASED PER STANDARD PLAN S-23, CASE II, UNLESS OTHERWISE APPROVED BY THE DIRECTOR OF PUBLIC WORKS
- ALL STRUCTURES SHALL BE EITHER BRICK SEWER MANHOLES PER STANDARD PLAN S-3 OR PRECAST CONCRETE SEWER MANHOLES PER STANDARD PLAN S-38, OR REINFORCED PRECAST CONCRETE MANHOLE PER STANDARD PLAN S-6, EXCEPT AS NOTED
- RESURFACE ALL TRENCHES WITHIN PAVED AREAS TO MEET LOS ANGELES COUNTY PUBLIC WORKS OR CALIFORNIA STATE HIGHWAY REQUIREMENTS IN ACCORDANCE WITH THE PERMITS
- FULL COMPLIANCE WITH SECTION 306.1.2.4 OF THE STANDARD SPECIFICATIONS WILL BE REQUIRED FOR BACKFILL IN STREETS; CERTIFICATION OF BACKFILL COMPACTION AND SAND EQUIVALENTS BY A QUALIFIED CIVIL ENGINEER SHALL BE PROVIDED BY THE PERMITTEE PRIOR TO THE ISSUANCE OF A CERTIFICATE OF PARTIAL ACCEPTANCE
- ALL BACKFILL AND FILLS OUTSIDE OF STREET RIGHT OF WAY SHALL BE COMPACTED TO 90% OF MAXIMUM DENSITY AS DETERMINED BY ASTM SOIL COMPACTION TEST D 1557-78 METHOD "D" UNLESS OTHERWISE SPECIFIED; THIS SHALL BE CERTIFIED BY A QUALIFIED CIVIL ENGINEER. THIS CERTIFICATION SHALL BE SUBMITTED TO THE CONSTRUCTION DIVISION OF THE DEPARTMENT OF PUBLIC WORKS PRIOR TO ACCEPTANCE OF THE WORK BY THE COUNTY
- MANHOLE TOPS IN UNIMPROVED RIGHTS OF WAY TO BE SIX INCHES ABOVE FINISHED GRADE
- SEWERS TO BE TESTED FOR LEAKAGE PER SECTION 306.1.4 OF THE STANDARD SPECIFICATIONS AND SPECIAL PROVISIONS
- Full compliance with part IV of the special provisions is required for the installation of A.B.S. composite pipe
- Manhole water stop gaskets and clamps are required for the connection of A.B.S. composite pipe to manhole structures
- A.B.S. solid wall pipe must be used for wye and house lateral connections to A.B.S. composite mainline sewer pipe
- Three degree deflection couplers are required for radius of curvature less than 380 feet when using A.B.S. composite pipe
- No connections for disposal of industrial waste are allowed if A.B.S. composite pipe is used
- Sewer line curvature shall not be achieved by pulling of joints or beveling pipe ends when using plastic pipe including A.B.S. composite pipe
- A.B.S. solid wall pipe is not acceptable for use as mainline sewer
- Only wye branches are to be used for connection to A.B.S. composite mainline sewer pipe

NO CONNECTION FOR THE DISPOSAL OF INDUSTRIAL WASTES SHALL BE MADE TO SEWERS SHOWN ON THESE DRAWINGS UNTIL A PERMIT FOR INDUSTRIAL WASTEWATER DISCHARGE HAS BEEN ISSUED BY THE SANITATION DISTRICTS FOR SAID CONNECTION.

BEFORE BREAKING INTO OR CONSTRUCTION ON A COUNTY SANITATION DISTRICT SEWER AND PRIOR TO FINAL ACCEPTANCE OF THE PROJECT, SANITATION DISTRICT INSPECTOR SHALL BE NOTIFIED BY PHONE (818) 962-8605 SO THAT REQUIRED INSPECTION CAN BE MADE.

**GENERAL NOTES:**

- A SEWER CONSTRUCTION PERMIT SHALL BE OBTAINED AND A FEE PAID FOR CONSTRUCTION INSPECTION AND RECORD PLANS TO THE DEPARTMENT OF PUBLIC WORKS AT THE PERMIT CENTER, 800 SOUTH FLEMING AVENUE, 8TH FLOOR, ALHAMBRA, AT LEAST 72 HOURS PRIOR TO STARTING WORK UNDER THIS CONTRACT. COPIES OF ALL OTHER REQUIRED PERMITS, SUCH AS ROAD EXCAVATION, CALTRANS, ETC. MUST BE FILED WITH THE PERMIT APPLICATION
- PRIOR TO ISSUANCE OF ANY PERMIT, THE CONTRACTOR SHALL FILE A PERMIT FOR EXCAVATIONS AND TRENCHES FROM THE STATE OF CALIFORNIA DIVISION OF INDUSTRIAL SAFETY AND A CERTIFICATE OF WORKERS COMPENSATION INSURANCE WITH THE DEPARTMENT OF PUBLIC WORKS NAMED AS THE CERTIFICATE HOLDER TO BE NOTIFIED 30 DAYS PRIOR TO CANCELLATION OF POLICY
- IF WORK IS TO BE DONE IN A STATE HIGHWAY, A PERMIT MUST BE OBTAINED FROM THE STATE OF CALIFORNIA DIVISION OF HIGHWAYS, 120 SOUTH SPRING STREET, LOS ANGELES, CALIFORNIA
- WHEN WORK IS WITHIN A CONTRACT CITY, THE CONTRACTOR MUST CONTACT THE DIRECTOR OF PUBLIC WORKS OF THAT CITY TO DETERMINE THE LOCATION TO PAY THE INSPECTION FEE
- THE CONTRACTOR SHALL CONTACT THE DISTRICT OFFICE LISTED ON THE "APPLICATION FOR CONSTRUCTION PERMIT" TO ARRANGE FOR AN ACCEPTABLE CONSTRUCTION START DATE AND SHALL NOTIFY THE CONSTRUCTION DIVISION BY TELEPHONE (818) 962-8605 AT LEAST TWENTY-FOUR HOURS BEFORE STARTING ANY WORK UNDER THIS CONTRACT
- APPROVAL OF THIS PLAN BY THE COUNTY OF LOS ANGELES DOES NOT CONSTITUTE A REPRESENTATION AS TO ACCURACY OF THE LOCATION OF OR THE EXISTENCE OR NON-EXISTENCE OF ANY UNDERGROUND UTILITY PIPE OR STRUCTURE WITHIN THE LIMITS OF THIS PROJECT. THIS NOTE APPLIES TO ALL PAGES
- ALL WORK SHALL BE IN ACCORDANCE WITH THE "STANDARD SPECIFICATIONS FOR PUBLIC WORKS CONSTRUCTION, 1988 EDITION", INCLUDING SUPPLEMENTS AND THE SPECIAL PROVISIONS FOR THE CONSTRUCTION OF SANITARY SEWERS, DATED JULY 31, 1988 AND SHALL BE PROSECUTED ONLY IN THE PRESENCE OF THE DEPARTMENT OF PUBLIC WORKS PERSONNEL
- THE CONTRACTOR'S ATTENTION IS DIRECTED TO SECTION 7.10.4.1 OF THE STANDARD SPECIFICATIONS FOR PUBLIC WORKS CONSTRUCTION IN REGARD TO SAFETY ORDERS AND SHALL CONFORM TO THE "MINIMUM PUBLIC SAFETY REQUIREMENTS" AS SHOWN ON LOS ANGELES DEPARTMENT OF PUBLIC WORKS STANDARD S-2
- ELEVATIONS ARE IN FEET ABOVE U.S. & G.S. SEA LEVEL DATUM OF 1929
- NO REVISIONS SHALL BE MADE IN THESE PLANS WITHOUT THE APPROVAL OF THE DIRECTOR OF PUBLIC WORKS
- NO REPRESENTATIVE OF THE DEPARTMENT OF PUBLIC WORKS WILL SURVEY OR LAY OUT ANY PORTION OF THE WORK
- GRADES TO WHICH THIS IMPROVEMENT IS TO BE CONSTRUCTED ARE SHOWN ON PLANS AND PROFILES. GRADE POINTS FOR TOP OF CURBS, CENTERLINE OF STREETS OR CENTERLINE OF ALLEYS, ARE SHOWN BY CIRCLES ON PROFILES AT ALL POINTS BETWEEN DESIGNATED POINTS. THE GRADE SHALL BE ESTABLISHED SO AS TO CONFORM TO A STRAIGHT LINE DRAWN BETWEEN SAID DESIGNATED POINTS
- THE PRIVATE ENGINEER SHALL FURNISH THE DEPARTMENT OF PUBLIC WORKS WITH GRADE SHEETS AND STATIONING FOR ALL HOUSE LATERALS AND "Y" OR "T" BRANCHES AND SHALL PROVIDE STAKES FOR THEM AT THEIR PROPER LOCATIONS WITH STATIONING PLAINLY MARKED. ALL HOUSE LATERALS SHALL BE CONSTRUCTED IN A STRAIGHT ALIGNMENT AT RIGHT ANGLES FROM THE MAIN LINE SEWER EXCEPT AS SHOWN ON THE PLANS. HOUSE LATERALS FROM CHIMNEYS SHALL NOT HAVE AN ANGLE OF LESS THAN 45° WITH THE L. SEWER. ANY CHANGE IN ALIGNMENT SHALL BE REQUESTED IN WRITING BY THE PRIVATE ENGINEER
- THE PRIVATE ENGINEER SHALL FURNISH THE HOUSE LATERAL DEPTH AT THE PROPERTY LINE BELOW THE TOP CURB ELEVATION FOR EACH HOUSE LATERAL ON THE GRADE SHEET

**AS BUILT**  
 11/30/99

**SANITARY SEWERS**  
 TO BE CONSTRUCTED IN  
**TRACT NO. 41505**  
**PRIVATE CONTRACT NO. 10882**

INDEX U-75,2345  
 3 SHEETS, 6 PAGES  
 SCALE: VERT. 1" = 8'  
 HORIZ. 1" = 40'  
 JANUARY 11, 1988  
 PREPARED IN THE OFFICES OF:  
**C P LANGE ENGINEERS**  
 840 K.W. 9TH STREET UPLAND CA 91786  
 REG. C.E. No. 42328  
 MY AUTHORITY EXPIRES 3/31/92

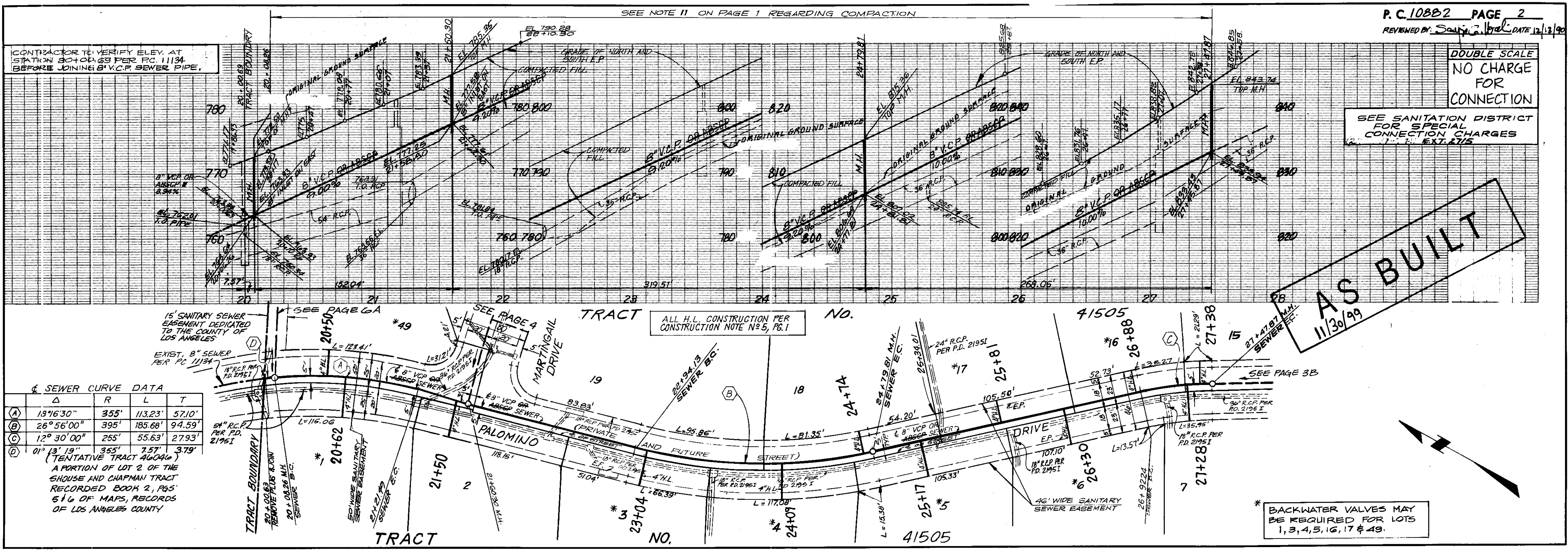


THE FOLLOWING LATEST REVISED STANDARD PLANS ON FILE IN THE OFFICE OF THE COUNTY ENGINEER SHALL APPLY IN THE CONSTRUCTION OF THIS PROJECT:

LEGEND	S-1
MINIMUM PUBLIC SAFETY REQUIREMENTS	S-2
REINFORCED PRECAST CONCRETE SEWER MANHOLE	S-6
STANDARD MANHOLE STEP	S-17
BEDDING FOR SEWER PIPE	S-21
CRADLING AND ENCASEMENT	S-23
WYE OR TEE SUPPORT	S-26
ALLOWABLE TRENCH WIDTHS	S-27
LOCKING MANHOLE FRAME AND COVER	S-28
NON-REINFORCED PRECAST CONCRETE SEWER MANHOLE	S-36
SPECIAL HOUSE LATERAL	S-38
CHIMNEY	S-27
ANCHOR BLOCKS	S-24
EROSION PROTECTION	S-31

COUNTY OF LOS ANGELES, CALIFORNIA  
 THOMAS A. TIDEMANSON  
 DIRECTOR OF PUBLIC WORKS  
 APPROVED: Dean [Signature] 12/17/90 (DATE)  
 CHECKED: Thomas [Signature] 12/17/90 (DATE)  
 REG. C.E. NO. 20273  
 SANDIMAS BLDG. DIST. 10

CHARLES W. CARRY  
 CHIEF ENGINEER  
 CO. SAN. DIST. NO. 22  
 APPROVED: [Signature] 12/20/90 (DATE)  
 OFFICE ENGINEER



SEWER CURVE DATA

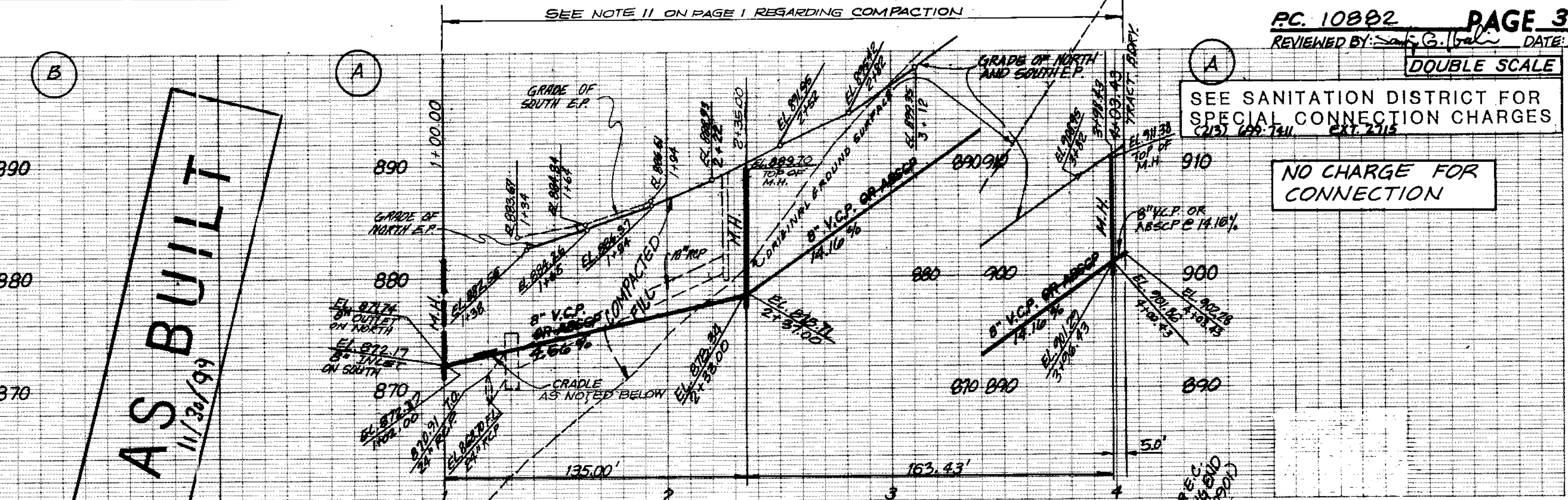
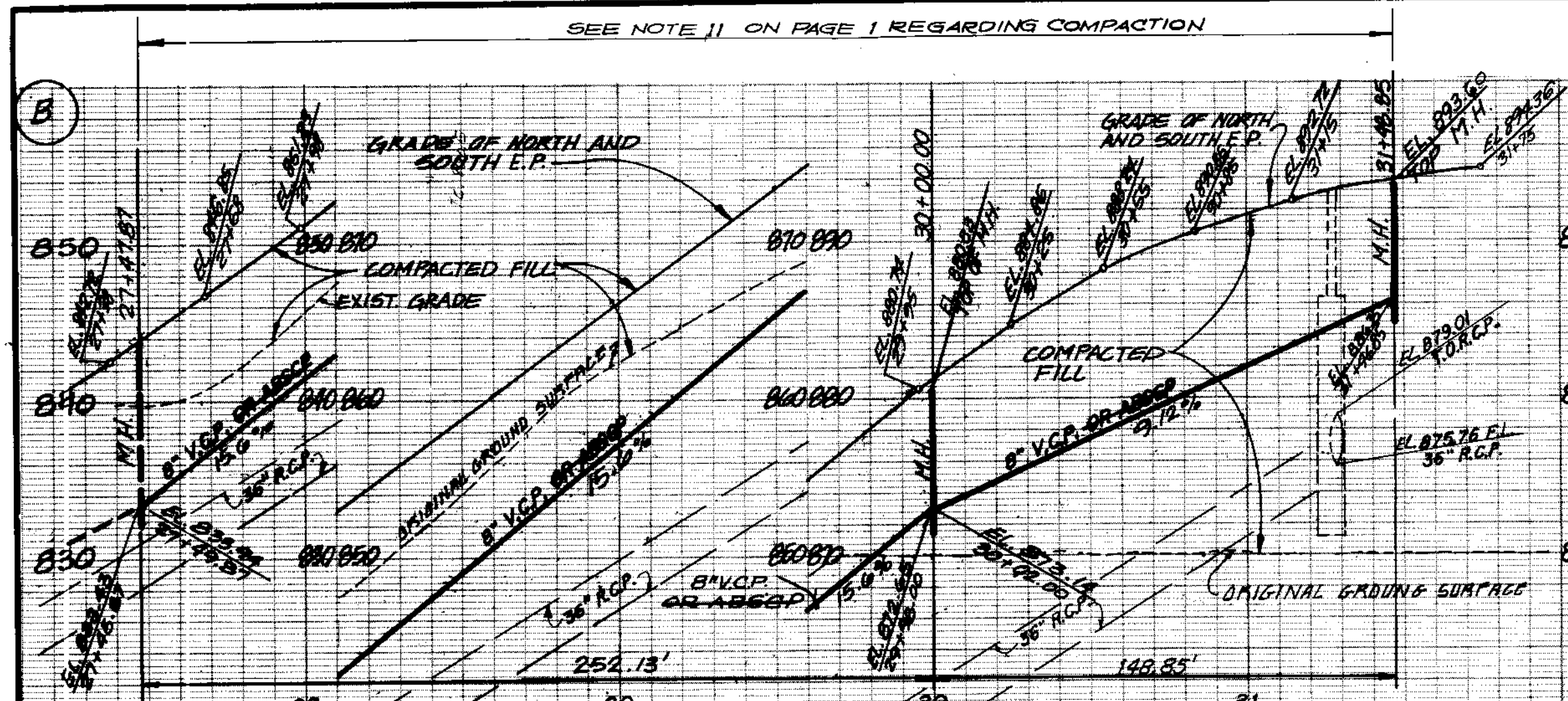
Δ	R	L	T
(A) 13°16'30"	355'	113.23'	57.10'
(B) 26°56'00"	395'	185.68'	94.59'
(C) 12°30'00"	255'	55.63'	27.93'
(D) 01°13'19"	355'	7.57'	3.79'

A PORTION OF LOT 2 OF THE SHOUSE AND CHAPMAN TRACT RECORDED BOOK 2, PAGES 516 OF MAPS, RECORDS OF LOS ANGELES COUNTY

\* BACKWATER VALVES MAY BE REQUIRED FOR LOTS 1, 3, 4, 5, 16, 17 & 49.

20214 ON TRACT

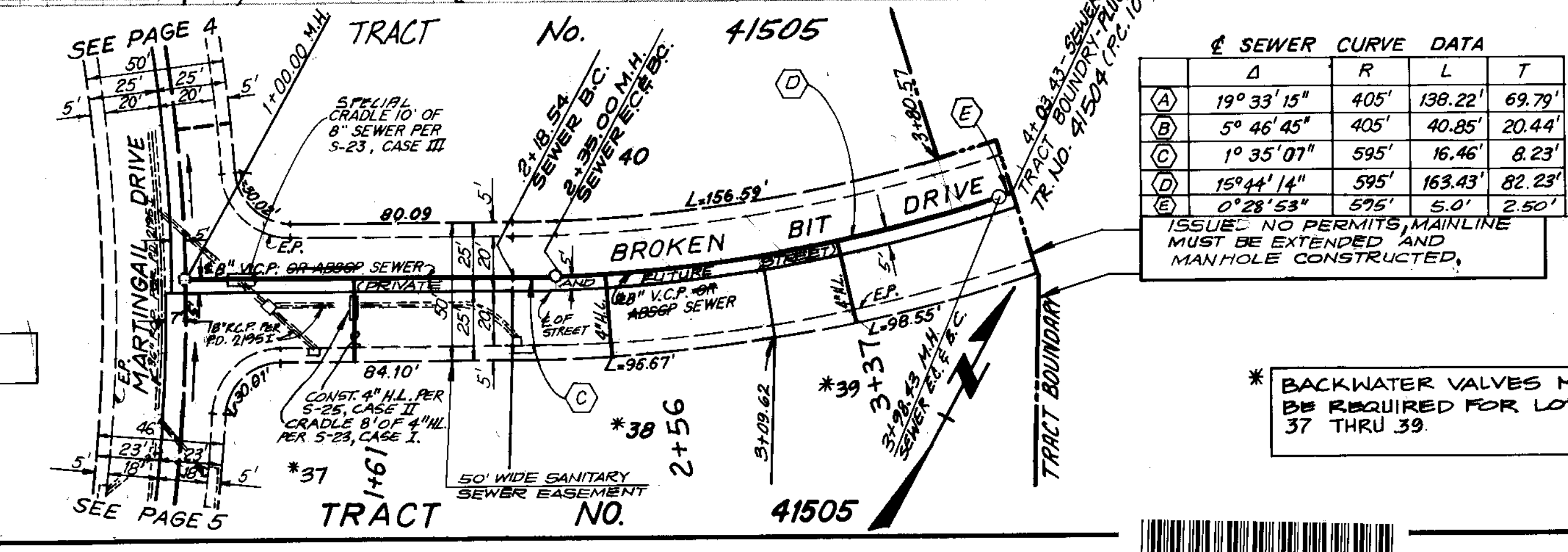
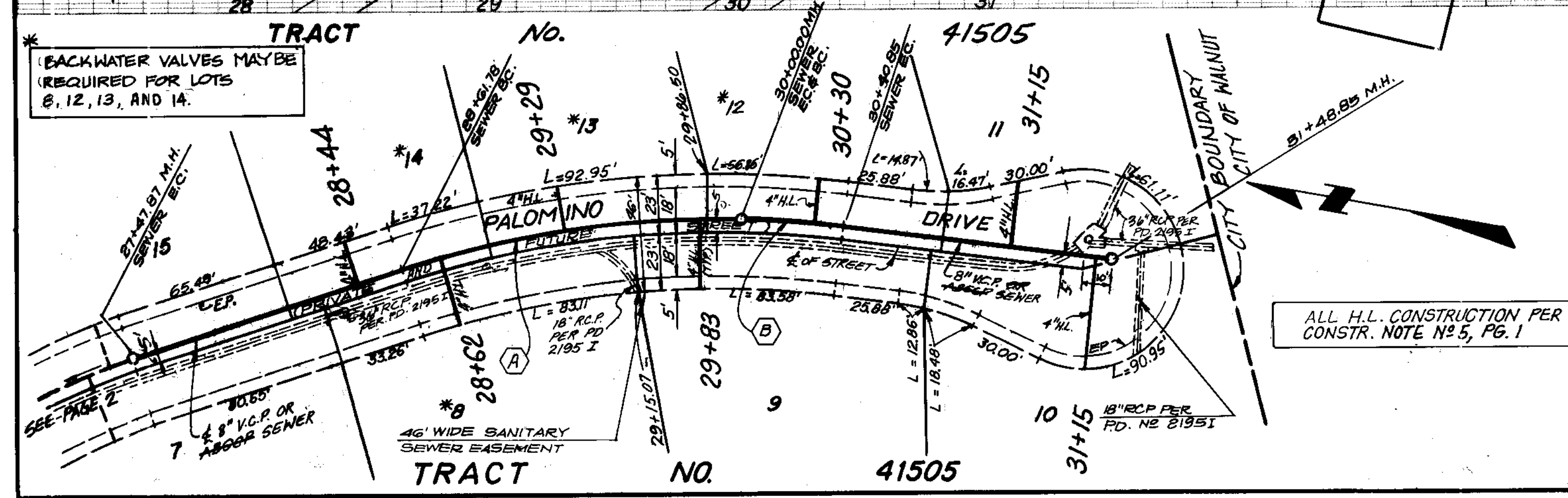




PC. 10882 PAGE 3  
 REVIEWED BY: S.G. [Signature] DATE: 12/13/90  
 DOUBLE SCALE

SEE SANITATION DISTRICT FOR SPECIAL CONNECTION CHARGES  
 CUS 225.741 EXT. 2715

NO CHARGE FOR CONNECTION

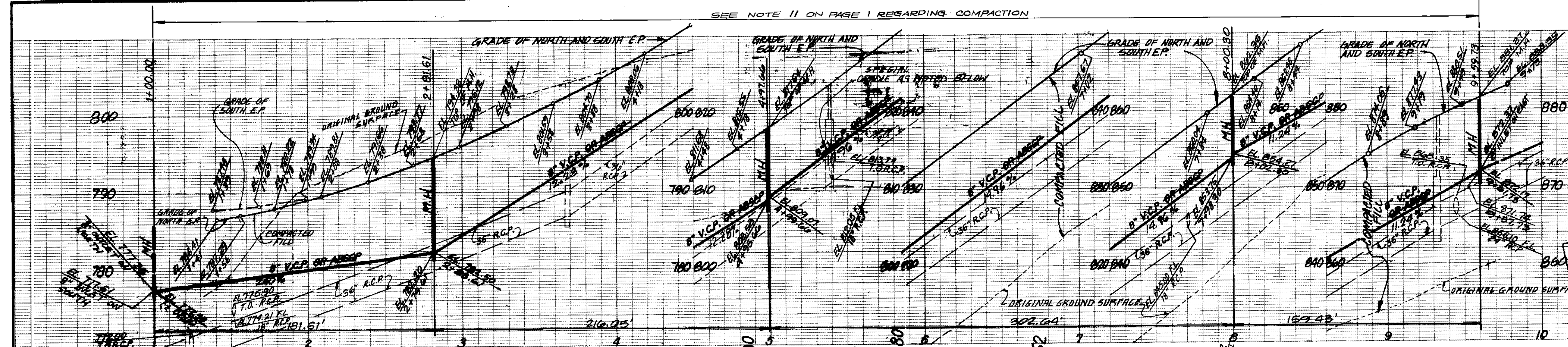


SEWER CURVE DATA

Δ	R	L	T
A) 19° 33' 15"	405'	138.22'	69.79'
B) 5° 46' 45"	405'	40.85'	20.44'
C) 1° 35' 07"	595'	16.46'	8.23'
D) 15° 44' 14"	595'	163.43'	82.23'
E) 0° 28' 53"	595'	5.0'	2.50'

ISSUE: NO PERMITS MAINLINE MUST BE EXTENDED AND MANHOLE CONSTRUCTED.

\* BACKWATER VALVES MAY BE REQUIRED FOR LOTS 37 THRU 39.

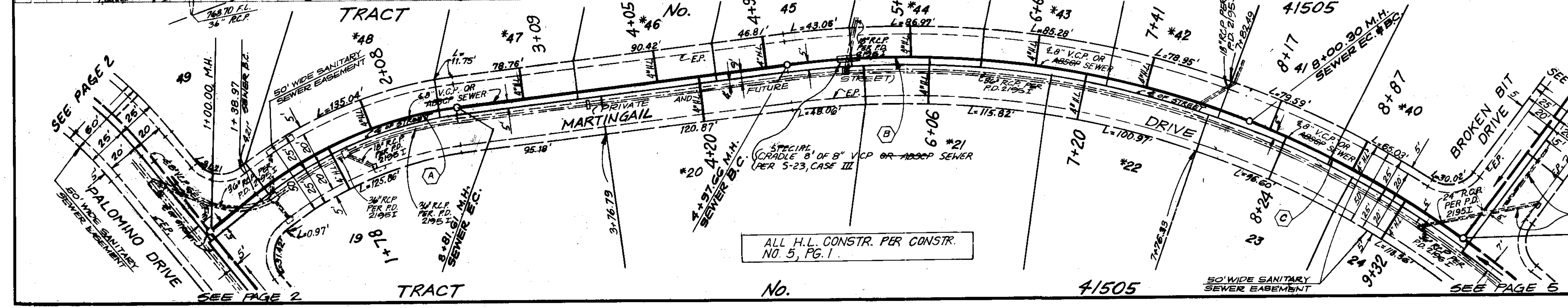


PC. 10882 PAGE 4  
 REVIEWED BY: S.G. [Signature] DATE: 12/10/90  
 DOUBLE SCALE

SEE SANITATION DISTRICT FOR SPECIAL CONNECTION CHARGES  
 CUS 225.741 EXT. 2715

NO CHARGE FOR CONNECTION

AS BUILT  
 11/20/99



SEWER CURVE DATA

Δ	R	L	T
A) 32° 03' 00"	255'	142.64'	73.24'
B) 28° 39' 40"	605'	302.64'	154.56'
C) 15° 05' 55"	605'	159.43'	80.18'

\* BACKWATER VALVES MAY BE REQUIRED FOR LOTS 20, 21, 22, 40, 42, 43, 44, AND LOTS 46 THRU 48.

S 58801 09

2021P ON T-CART



