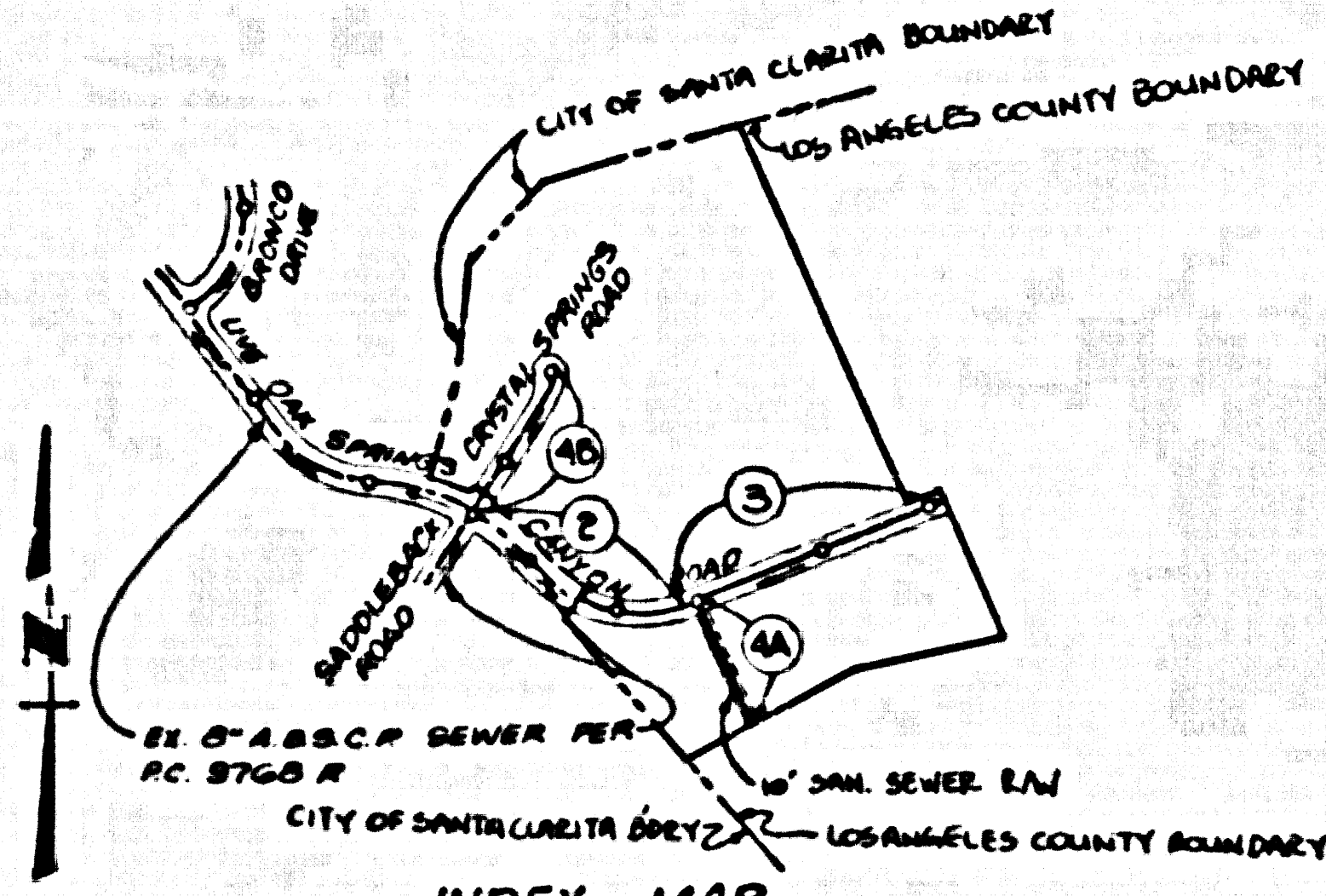


B.M. CL 3819 ELEV. 1065.511
 LACS. 84 MON. R. 31 FT. E. CR. SAND ON RD. 4
 0.1 IN. NO. 10 LINE. OAK SPRINGS, CA. RD.
 3 FT. N. 10' 10" S. 10' 10" W. 10' 10" S. 10' 10" W.
 (1971) 2 IN. 1" 3 FT. UP 2 FT. W.
 NEWHALL QUAD. 19.23



INDEX MAP
 1" = 600'
 P.C. 10893
 T.R. NO. 46364
 NOTE: NUMBERS IN CIRCLES INDICATE PAGE NUMBERS.

CONSTRUCTION NOTES... CONTINUED

16. FULL COMPLIANCE WITH PART III OF THE SPECIAL PROVISIONS IS REQUIRED FOR THE INSTALLATION OF A.B.S. COMPOSITE PIPE.
17. MANHOLE NUMBER, STOP BASKETS AND CLAMPS ARE REQUIRED FOR THE CONNECTION OF A.B.S. COMPOSITE PIPE TO MANHOLE STRUCTURES.
18. A.B.S. SOLID WALL PIPE MUST BE USED FOR WYE AND HOUSE LATERAL CONNECTIONS TO A.B.S. COMPOSITE MAINLINE SEWER PIPE.
19. A.B.S. COMPOSITE PIPE SHALL BE RECORDED IN CONFORMANCE WITH THE TABLE IN SECTION 8-21 PART III OF THE SPECIAL PROVISIONS.
20. THREE DEGREE DEFLECTA COUPLERS ARE REQUIRED FOR RADII OF CURVATURE LESS THAN 360 FEET WHEN USING 8" A.B.S. COMPOSITE PIPE.

21. NO CONNECTIONS FOR DISPOSAL OF INDUSTRIAL WASTE IS ALLOWED IF A.B.S. COMPOSITE PIPE IS USED.
22. SEWER LINE CURVATURE SHALL NOT BE ACHIEVED BY PULLING OF JOINTS OR BEVELING PIPE ENDS WHEN USING PLASTIC PIPE INCLUDING A.B.S. COMPOSITE PIPE.
23. ALL WYES AND/OR HOUSE LATERALS ARE TO BE LOCATED AT LEAST FIVE FEET APART AND WHEN COUPLER NOT CLOSED, THREE FIVE FEET TO ANY MANHOLE.
24. A.B.S. SOLID WALL PIPE IS NOT ACCEPTABLE FOR USE AS MAINLINE SEWER.
25. ONLY WYE BRANCHES ARE TO BE USED FOR CONNECTION TO A.B.S. COMPOSITE MAINLINE SEWER PIPE.

NO CONNECTION FOR THE DISPOSAL OF INDUSTRIAL WASTES SHALL BE MADE TO SEWERS SHOWN ON THESE DRAWINGS UNLESS A PERMIT FOR INDUSTRIAL WASTEWATER DISCHARGE HAS BEEN ISSUED BY THE SANITATION DISTRICTS FOR SAID CONNECTION.

BEFORE BREAKING INTO OR CONSTRUCTION ON A COUNTY SANITATION DISTRICT SEWER AND PRIOR TO FINAL ACCEPTANCE OF THE PROJECT, SANITATION DISTRICT INSPECTOR SHALL BE NOTIFIED BY PHONE (818) 962-8605 SO THAT REQUIRED INSPECTION CAN BE MADE.

REVISION NO. 1 DATE 5/18/82
 LOWERED MANHOLE ELEVATION AT STATION 3+50.00 (PAGE 4)
 FROM EL. 1749.80 TO EL. 1739.90
 APPROVED *Sandy G. Ibbel* 5/15/82

GENERAL NOTES: DOUBLE SCALE

1. ELEVATIONS ARE IN FEET ABOVE U.S.C. & G.S. MEAN DATUM OF 1929.
2. NO REVISIONS SHALL BE MADE IN THESE PLANS WITHOUT THE APPROVAL OF THE DIRECTOR OF PUBLIC WORKS.
3. NO REVISIONS OF THE DEPARTMENT OF PUBLIC WORKS SHALL BE MADE OR LAY OUT ANY PORTION OF THE WORK.
4. GRADERS TO WHICH THE IMPROVEMENT IS TO BE CONSTRUCTED ARE SHOWN ON PLANS AND PROFILES. BRIDGE POINTS FOR TOP OF CURBS, CENTERLINE OF STREETS OR CENTERLINE OF ALLWAYS ARE SHOWN ON PROFILES AT ALL POINTS BETWEEN BRIDGE POINTS. THE GRADE SHALL BE ESTABLISHED SO AS TO CONFORM TO A STRAIGHT LINE DRAINAGE BETWEEN SAID BRIDGE POINTS.
5. THE PRIVATE ENGINEER SHALL FURNISH THIS DEPARTMENT OF PUBLIC WORKS WITH GRADE SHEETS AND STATIONINGS FOR ALL HOUSE LATERALS AND 7" OR 8" BRANCHED AND SHALL PROVIDE STAKES FOR THEM AT THEIR PROPER LOCATIONS WITH STATIONING PLAINLY IDENTIFIED AS SHOWN ON THE PLANS. HOUSE LATERALS SHALL BE CONSTRUCTED IN A STRAIGHT ALIGNMENT AT RIGHT ANGLES FROM THE MAINLINE SEWER EXCEPT AS SHOWN ON THE PLANS. HOUSE LATERALS SHALL NOT HAVE AN ANGLE OF LESS THAN 90° WITH THE MAIN LINE SEWER. ANY CHANGE IN ALIGNMENT SHALL BE INDICATED BY THE PRIVATE ENGINEER.
6. THE PRIVATE ENGINEER SHALL FURNISH THE HOUSE LATERAL DEPTH AT THE PROPERTY LINE BELOW THE TOP OF CURBS. JUNCTION FOR BRANCH HOUSE LATERAL ON THE GRADE SHEET.
7. BEFORE WORK CAN BE STARTED, THE CONTRACTOR MUST OBTAIN A PERMIT TO EXCAVATE IN COUNTY STREETS FROM THE CONSTRUCTION DIVISION OF THE LOS ANGELES DEPARTMENT OF PUBLIC WORKS. PERMIT OFFICE HOLD A PERMIT TO THE DIRECTOR OF PUBLIC WORKS, 800 S. FRESQUENT AVE., ALHAMBRA, CALIFORNIA 91803 - 8TH FLOOR TO COVER THE COST OF CONSTRUCTION INSPECTION AND RECORD PLANS.
8. IF WORK IS TO BE DONE IN A STATE HIGHWAY A PERMIT MUST BE OBTAINED FROM THE STATE OF CALIFORNIA DIVISION OF HIGHWAYS, 151 SOUTH SPRING STREET, LOS ANGELES, CALIFORNIA.
9. APPROVAL OF THIS PLAN BY THE COUNTY OF LOS ANGELES DOES NOT CONSTITUTE A REPRESENTATION AS TO THE ACCURACY OF THE LOCATION OF OR THE EXISTENCE OR NON-EXISTENCE OF ANY UNDERGROUND UTILITY PIPE OR STRUCTURE WITHIN THE LIMITS OF THIS PROJECT. THIS NOTE APPLIES TO ALL PAGES.
10. REFER TO SECTION 116.41 OF THE STANDARD SPECIFICATIONS REGARDING SAFETY MEASURES.
11. PRIOR TO THE ISSUANCE OF THE REQUIRED SEWER CONSTRUCTION PERMIT, THE CONTRACTOR SHALL OBTAIN AND FILE WITH THE DEPARTMENT OF PUBLIC WORKS COPIES OF A PERMIT TO EXCAVATE IN COUNTY STREETS FROM THE CONSTRUCTION DIVISION OF THE DEPARTMENT OF PUBLIC WORKS. A PERMIT FOR EXCAVATIONS AND TRENCHES FROM THE STATE OF CALIFORNIA, A DIVISION OF INDUSTRIAL SAFETY, AND A CERTIFICATE OF WORKERS COMPENSATION INSURANCE WITH THE DEPARTMENT OF PUBLIC WORKS, 800 S. FRESQUENT AVE., ALHAMBRA, CALIFORNIA 91803 - 8TH FLOOR, NAMED AS THE CERTIFICATE HOLDER TO BE FORWARDED TO THE CONSTRUCTION DIVISION, PUBLIC WORKS DEPARTMENT.

CONSTRUCTION NOTES:

1. WORK SHALL BE CONSTRUCTED ACCORDING TO THE STANDARD SPECIFICATIONS FOR PUBLIC WORKS CONSTRUCTION (11th EDITION) AND DEPARTMENT OF PUBLIC WORKS SPECIAL PROVISIONS FOR THE CONSTRUCTION OF SANITARY SEWER CONSTRUCTION.
2. THE CONTRACTOR SHALL NOTIFY THE CONSTRUCTION DIVISION BY TELEPHONE (818) 969-9192 AT LEAST TWENTY-FOUR HOURS BEFORE STARTING ANY WORK UNDER THIS CONTRACT.
3. HOUSE LATERALS TO BE CONSTRUCTED WITH INVERTS AT PROPERTY LINE 6 FEET BELOW CURB GRADE EXCEPT AS NOTED.
4. WYE OR THE BRANCHES MAY BE USED FOR CONNECTIONS TO MAINLINE SEWERS EXCEPT AS NOTED.
5. ALL STRUCTURES SHALL BE EITHER BRICK SEWER MANHOLES PER 8-0 OR PRECAST CONCRETE SEWER MANHOLES PER 8-02 EXCEPT AS NOTED.
6. PROVIDE STAKES ON THE PROPERTY LINE OR PROPERTY LINES PRODUCED AT RIGHT ANGLES TO THE SEWER LINE AT THE CENTER LINE OF EACH MANHOLE.
7. MANHOLE TOPS IN UNIMPROVED RIGHTS OF WAY TO BE SIX INCHES ABOVE FINISHED GRADE.
8. WYTHED CLAY PIPE JOINTS SHALL BE TYPE "C" OR "D" PER STANDARD SPECIFICATIONS SECTION 200-2.
9. IF A POWER POLE IS WITHIN THREE FEET OF THE SEWER, THE SEWER SHALL BE ENCASED PER 8-02 CASE II, TWO FEET ON EACH SIDE FROM THE POINT OF INTERFERENCE.
10. IF DURING THE COURSE OF CONSTRUCTION IT IS DETERMINED THAT THERE IS LESS THAN FOUR FEET OF COVER OVER THE TOP OF A MAINLINE OR HOUSE LATERAL, W.C.P. SEWER WHICH IS NOT INDICATED ON THE PLANS, THE PIPE SHALL BE ENCASED PER 8-02 CASE II UNLESS OTHERWISE SPECIFIED BY THE DIRECTOR OF PUBLIC WORKS.
11. ALL JOINTS BETWEEN CAST IRON PIPE AND WYTHED CLAY PIPE SHALL BE MADE WITH A RUBBER SLEEVE JOINT, TYPE "C" OR "D", WITH GASKETS IF NECESSARY PER STANDARD SPECIFICATIONS SECTION 200-2.
12. SEWERS TO BE TESTED FOR LEAKAGE PER SECTION 200-1.4 OF THE STANDARD SPECIFICATIONS AND SPECIAL PROVISIONS.
13. RESURFACE ALL TRENCHES WITHIN PAVED AREAS TO MEET LOS ANGELES COUNTY PUBLIC WORKS OR CALIFORNIA STATE HIGHWAY REQUIREMENTS IN ACCORDANCE WITH PERMITS.
14. FULL COMPLIANCE WITH SECTION 200-1.4 OF THE STANDARD SPECIFICATIONS WILL BE REQUIRED FOR BACKFILL IN STREETS. COMPACTION OF BACKFILL CONSTRUCTION AND BAND JOINTS BY A QUALIFIED REGISTERED TESTING LABORATORY SHALL BE PROVIDED BY THE PERMITTEE PRIOR TO THE ISSUANCE OF A CERTIFICATE OF PARTIAL ACCEPTANCE.
15. SPECIAL BACKFILL IN SUBURBAN CONSTRUCTION: IN BACKFILL TRENCH AND REPLACE OTHER EARTH SO AS TO ACHIEVE THE NATURAL OR FINISHED GRADES AND SLOPES SHOWN ON THE GRADING PLAN APPROVED FOR THIS DEVELOPMENT BY THE LAND DEVELOPMENT DIVISION OF THE COUNTY OF LOS ANGELES. BACKFILL AND EARTH REPLACED SHALL BE COMPACTED TO A MINIMUM OF 90% OF MAXIMUM DENSITY PER A.S.T.M. METHOD OF TEST D955 AT 15% MOISTURE ACCEPTABLE CERTIFICATION OF SUCH COMPACTION SHALL BE SUBMITTED TO THE CONSTRUCTION DIVISION, PUBLIC WORKS DEPARTMENT.

PROFILE ALIGNMENT AND GRADE OF
SANITARY SEWERS
 TO BE CONSTRUCTED IN
TRACT NO. 46364

PRIVATE CONTRACT NO. 10893
 INDEX A-53
 2 SHEETS, 4 PAGES
 53383

SCALE: HORIZ. 1" = 100' VERT. 1" = 10'
 JUNE 1, 1982
 PREPARED IN THE OFFICES OF
 CROSBY, WOOD, BENTON AND ASSOCIATES
 9545 SADDLEBACK BLVD., SUITE 209, SHERMAN, CA 95166
 (415) 962-2800
 BY: *Forrestal A. Wood*
 REG. CE NO. 52220

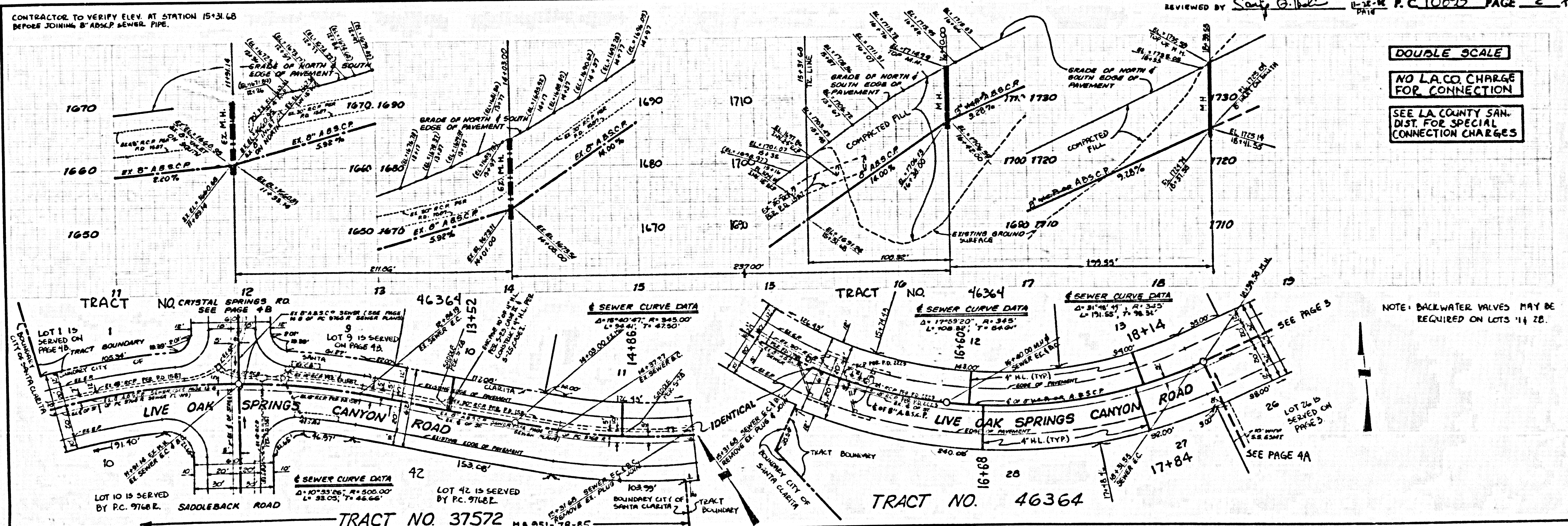
THE FOLLOWING LATEST REVISED STANDARD PLANS ON FILE IN THE OFFICE OF THE DEPARTMENT OF PUBLIC WORKS SHALL APPLY TO THE CONSTRUCTION OF THIS PROJECT:

LEGEND	8-1
MINIMUM PUBLIC SAFETY REQUIREMENTS	8-2
BRICK SEWER MANHOLES	8-3
STANDARD MANHOLE STEP	8-17
RECORDING FOR SEWER PIPE	8-21
CRADLING AND ENCASUREMENT	8-23
WYE OR THE SUPPORT	8-25
ALLOWABLE TRENCH WIDTHS	8-29
LOCATING MANHOLE FRAMES AND COVER	8-30
NON-REINFORCED PRECAST CONCRETE SEWER PIPE	8-30
DIMENSIONS FOR HOUSE LATERALS	8-30
RECORDING PROFILES IN STEEP SLOPES	8-30
SPECIAL HOUSE LATERALS	8-30

COUNTY OF LOS ANGELES, CALIFORNIA
 THOMAS A. TIDEMANSON
 DIRECTOR OF PUBLIC WORKS
 APPROVED *Dean E. Hethcote* 12-2-82 (DATE)
 CHECKED *Forrestal A. Wood* 12-1-82 (DATE)
 REG. CE NO. 18116

CHARLES W. CARRY
 CHIEF ENGINEER
 60 SAN DIST NO. 26
 APPROVED *Sandy G. Ibbel* 5/15/82 (DATE)
 OFFICE ENGINEER

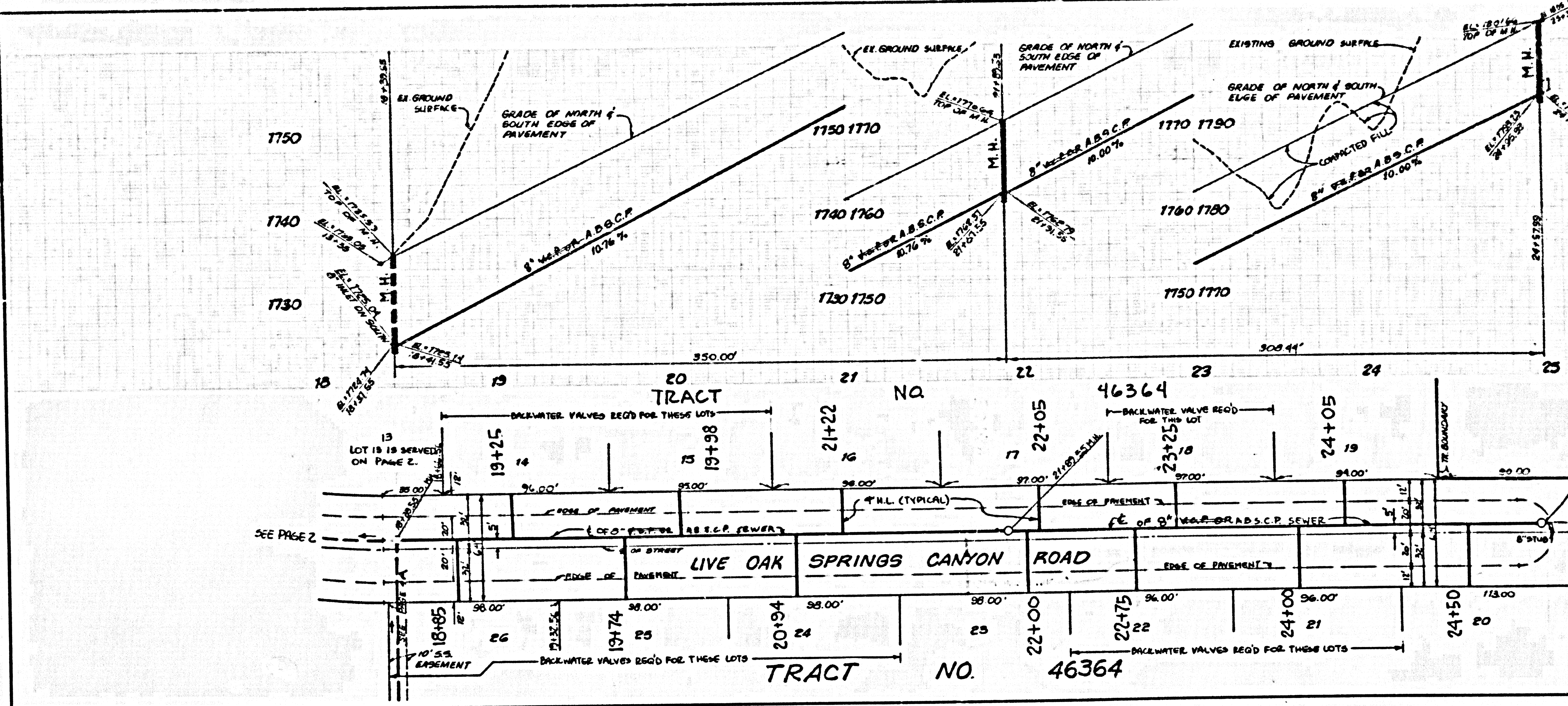
SANTA CLARITA VALLEY BLDG. DIST. B.C.



DOUBLE SCALE
 NO L.A. CO. CHARGE FOR CONNECTION
 SEE L.A. COUNTY SAN. DIST. FOR SPECIAL CONNECTION CHARGES

REVIEWED BY *Sandy G. Ibbel* 5-15-82 P.C. 10893 PAGE 2 of 4

DOUBLE SCALE
NO L.A. CO. CHARGE FOR CONNECTION.
SEE L.A. COUNTY SAN. DIST. FOR SPECIAL CONNECTION CHARGES.

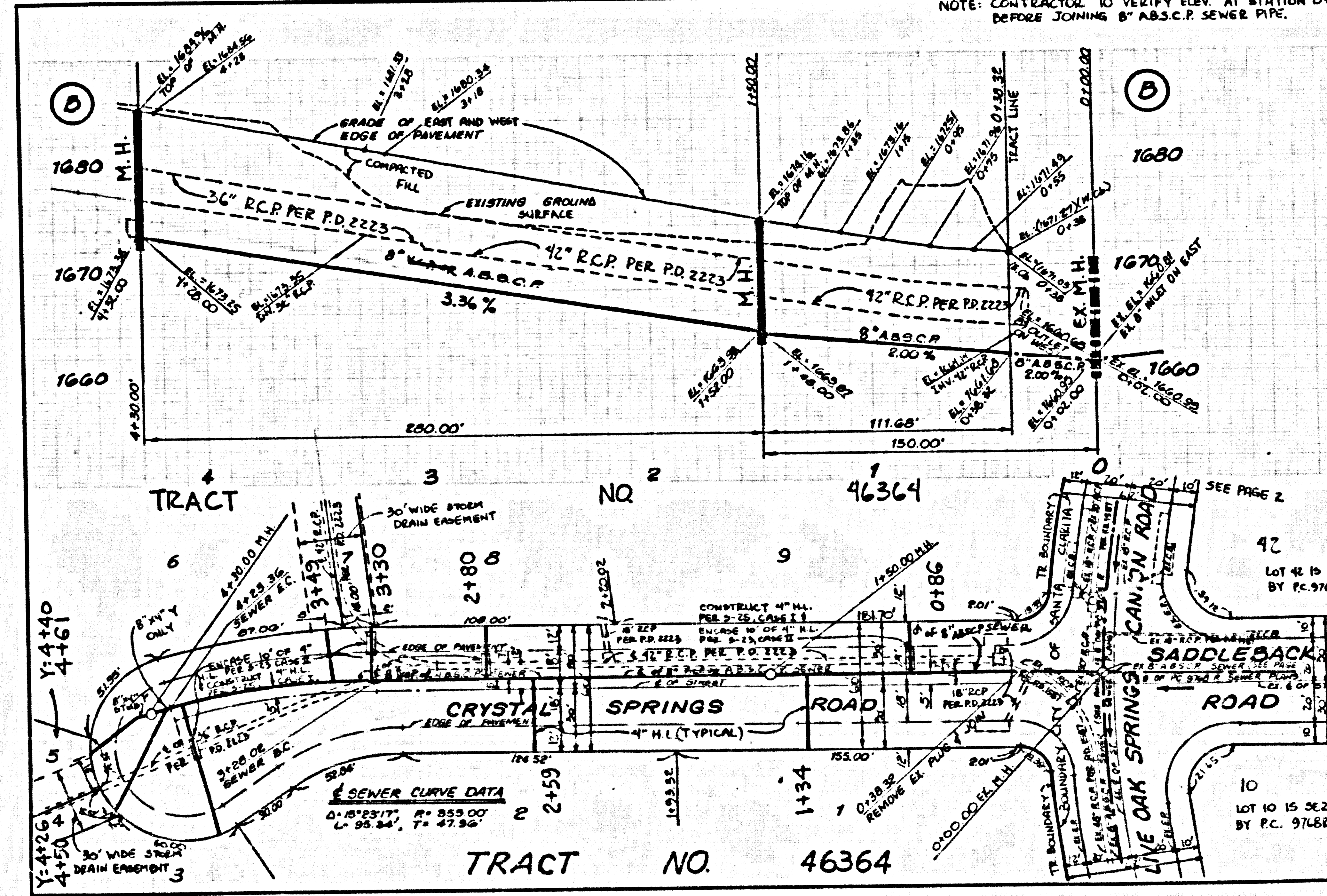


NOTE: BACKWATER VALVES MAY BE REQUIRED ON LOTS 14, 15, 18, 21, 22, 24, 25, & 26.

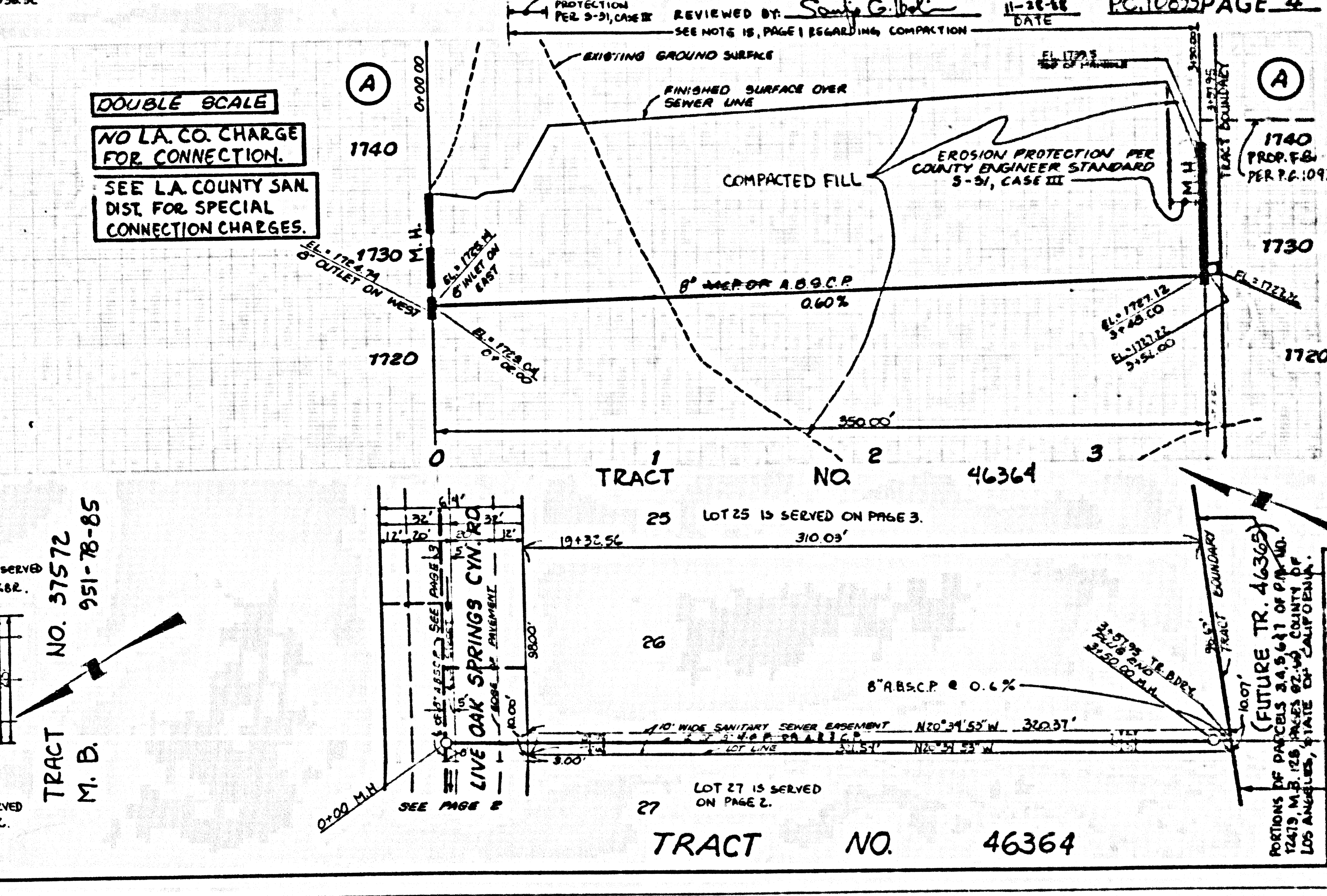
ISSUE NO PERMITS MAINLINE MUST BE EXTENDED AND MANHOLE CONSTRUCTED

NOTE: CONTRACTOR TO VERIFY ELEV. AT STATION 0+38.32 BEFORE JOINING 8" A.B.S.C.P. SEWER PIPE.

DOUBLE SCALE
NO L.A. CO. CHARGE FOR CONNECTION.
SEE L.A. COUNTY SAN. DIST. FOR SPECIAL CONNECTION CHARGES.



ISSUE NO PERMITS MAINLINE MUST BE EXTENDED & MANHOLE CONSTRUCTED



ISSUE NO PERMITS MAINLINE MUST BE EXTENDED & MANHOLE CONSTRUCTED

5
LIVE OAK SPRINGS