

# SANITARY SEWERS

TO BE CONSTRUCTED IN  
**FULLERTON ROAD, AND,  
 AGUIRO STREET**

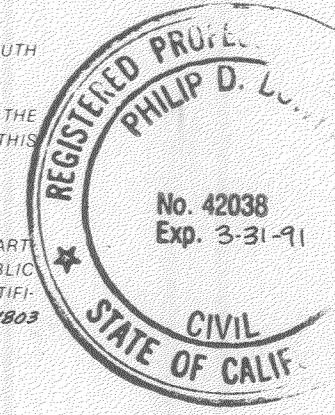
**PRIVATE CONTRACT NO. 10898**

INDEX U-129  
 4 SHEETS; 7 PAGES

SCALE: VERT. 1"=4'  
 HORIZ. 1"=40' JULY 12, 1988

PREPARED IN THE OFFICES OF  
**HUNSAKER & ASSOC., INC. 3 HUGHES, IRVINE CA 92718**

BY: Philip D. Dowty  
 REG. C.E. No. 42038  
 PHILIP D. COUNTY



### GENERAL NOTES:

1. ELEVATIONS ARE IN FEET ABOVE U.S.C. & G.S. SEA LEVEL DATUM OF 1929
2. NO REVISIONS SHALL BE MADE IN THESE PLANS WITHOUT THE APPROVAL OF THE DIRECTOR OF PUBLIC WORKS.
3. NO REPRESENTATIVE OF THE DEPARTMENT OF PUBLIC WORKS WILL SURVEY OR LAY OUT ANY PORTION OF THE WORK.
4. GRADES TO WHICH THIS IMPROVEMENT IS TO BE CONSTRUCTED ARE SHOWN ON PLANS AND PROFILES. GRADE POINTS FOR TOP OF CURBS, CENTER LINE OF STREETS, OR CENTER LINE OF ALLEYS ARE SHOWN BY CIRCLES ON PROFILES. AT ALL POINTS BETWEEN DESIGNATED POINTS THE GRADE SHALL BE ESTABLISHED SO AS TO CONFORM TO A STRAIGHT LINE DRAWN BETWEEN SAID DESIGNATED POINTS.
5. THE PRIVATE ENGINEER SHALL FURNISH THE DEPARTMENT OF PUBLIC WORKS WITH GRADE SHEETS AND STATIONING FOR ALL HOUSE LATERALS AND "Y" OR "T" BRANCHES AND SHALL PROVIDE STAKES FOR THEM AT THEIR PROPER LOCATIONS WITH STATIONING PLAINLY MARKED. ALL HOUSE LATERALS SHALL BE CONSTRUCTED IN A STRAIGHT ALIGNMENT AT RIGHT ANGLES FROM THE MAIN LINE SEWER EXCEPT AS SHOWN ON THE PLANS. HOUSE LATERALS FROM CHIMNEYS SHALL NOT HAVE AN ANGLE OF LESS THAN 45° WITH THE MAIN LINE SEWER. ANY CHANGE IN ALIGNMENT SHALL BE REQUESTED IN WRITING BY THE PRIVATE ENGINEER.
6. THE PRIVATE ENGINEER SHALL FURNISH THE HOUSE LATERAL DEPTH AT THE PROPERTY LINE BELOW THE TOP OF CURB ELEVATION FOR EACH HOUSE LATERAL ON THE GRADE SHEET.
7. BEFORE WORK CAN BE STARTED, THE CONTRACTOR MUST OBTAIN A PERMIT TO EXCAVATE IN COUNTY STREETS FROM THE CONST. DIV. OF THE LOS ANGELES DEPARTMENT OF PUBLIC WORKS. PERMIT OFFICE NO. 6 AND PAY A FEE TO THE DIRECTOR OF PUBLIC WORKS, 900 S. FRENCH AVE., ALHAMBRA, CA 91803 - 844 PL000 TO COVER THE COST OF CONSTRUCTION INSPECTION AND RECORD PLANS.
8. IF WORK IS TO BE DONE IN A STATE HIGHWAY A PERMIT MUST BE OBTAINED FROM THE STATE OF CALIFORNIA, DIVISION OF HIGHWAYS, 120 SOUTH SPRING STREET, LOS ANGELES, CALIFORNIA.
9. APPROVAL OF THIS PLAN BY THE COUNTY OF LOS ANGELES DOES NOT CONSTITUTE A REPRESENTATION AS TO THE ACCURACY OF THE LOCATION OF OR THE EXISTENCE OR NON-EXISTENCE OF ANY UNDERGROUND UTILITY PIPE, OR STRUCTURE WITHIN THE LIMITS OF THIS PROJECT. THIS NOTE APPLIES TO ALL PAGES.
10. REFER TO SECTION 7 10 4 1 OF THE STANDARD SPECIFICATIONS, REGARDING SAFETY ORDERS.
11. PRIOR TO THE ISSUANCE OF THE REQUIRED SEWER CONSTRUCTION PERMIT, THE CONTRACTOR SHALL OBTAIN AND FILE WITH THE DEPARTMENT OF PUBLIC WORKS COPIES OF A PERMIT TO EXCAVATE IN COUNTY STREETS FROM THE CONST. DIV. OF THE DEPARTMENT OF PUBLIC WORKS. A PERMIT FOR EXCAVATIONS AND TRENCHES FROM THE STATE OF CALIFORNIA, A DIVISION OF INDUSTRIAL SAFETY AND A CERTIFICATE OF WORKER'S COMPENSATION INSURANCE WITH THE DEPARTMENT OF PUBLIC WORKS, 900 S. FRENCH AVE., ALHAMBRA, CA 91803 - 844 PL000 NAMED AS THE CERTIFICATE HOLDER TO BE NOTIFIED 30 DAYS PRIOR TO CANCELLATION OF POLICY.

**NOTE: ON PAGES 4, 5, 6 & 7 NO SEWER CONNECTIONS ARE TO BE MADE UNTIL ANNEXATION FEES ARE PAID TO SANITATION DISTRICT.**

**B.M. CG 4204 ELEV. 611.072**  
 ROAD DEPT. BENCH MARK IN NORTH END OF CATCH BASIN AT NORTH ENTRANCE TO ROWLAND WATER DIST. 0.5 MILES SOUTH OF SENTENO STREET & 18 FT. WEST OF CENTER OF TRAVEL ON FULLERTON ROAD OTTERBEIN **QUAD. 19 80**

**INSTRUCTION NOTE:**  
 NUMBERS IN CIRCLE INDICATE PAGE NUMBERS

### CONSTRUCTION NOTES:

1. WORK SHALL BE CONSTRUCTED ACCORDING TO THE STANDARD SPECIFICATIONS FOR PUBLIC WORKS CONSTRUCTION (1988 EDITION) AND DEPARTMENT OF PUBLIC WORKS SPECIAL PROVISIONS FOR THE CONSTRUCTION OF SANITARY SEWERS DATED SEPT. 21, 1976 AND SHALL BE PROSECUTED ONLY IN THE PRESENCE OF THE DEPT. OF PUBLIC WORKS.
2. THE CONTRACTOR SHALL NOTIFY THE CONSTRUCTION DIVISION BY TEL. (818) 458-3129 AT LEAST TWENTY-FOUR HOURS BEFORE STARTING ANY WORK UNDER THIS CONTRACT.
3. HOUSE LATERALS TO BE CONSTRUCTED WITH INVERTS AT PROPERTY LINE 6 FEET BELOW CURB GRADE EXCEPT AS NOTED.
4. WYE OR TEE BRANCHES MAY BE USED FOR CONNECTIONS TO MAINLINE SEWERS EXCEPT AS NOTED.
5. ALL STRUCTURES SHALL BE EITHER BRICK SEWER MANHOLES PER S-3 OR PRECAST CONCRETE SEWER MANHOLES PER S-36, EXCEPT AS NOTED.
6. PROVIDE STAKES ON THE PROPERTY LINE OR PROPERTY LINES PRODUCED AT RIGHT ANGLES TO THE SEWER LINE AT THE CENTER LINE OF EACH MANHOLE.
7. MANHOLE TOPS IN UNIMPROVED RIGHTS OF WAY TO BE SIX INCHES ABOVE FINISHED GRADE.
8. VITRIFIED CLAY PIPE JOINTS SHALL BE TYPE "D" OR "G" PER STANDARD SPECIFICATIONS SECTION 208-2.
9. IF A POWER POLE IS WITHIN THREE FEET OF THE SEWER, THE SEWER SHALL BE ENCASED PER S-23, CASE II TWO FEET ON EACH SIDE FROM THE POINT OF INTERFERENCE.
10. IF DURING THE COURSE OF CONSTRUCTION IT IS DETERMINED THAT THERE IS LESS THAN FOUR FEET OF COVER OVER THE TOP OF A MAIN LINE OR HOUSE LATERAL V.C.P. SEWER WHICH IS NOT INDICATED ON THE PLANS, THE PIPE SHALL BE ENCASED PER S-23, CASE II UNLESS OTHERWISE APPROVED BY THE DIRECTOR OF PUBLIC WORKS.
11. ALL JOINTS BETWEEN CAST IRON PIPE AND VITRIFIED CLAY PIPE SHALL BE MADE WITH A RUBBER SLEEVE JOINT, TYPE "C" OR "D", (WITH BUSHING IF NECESSARY) PER STANDARD SPECIFICATIONS, SECTION 208-2.
12. SEWERS TO BE TESTED FOR LEAKAGE PER SECTION 306-1.4 OF THE STANDARD SPECIFICATIONS AND SPECIAL PROVISIONS.
13. RESURFACE ALL TRENCHES WITHIN PAVED AREAS TO MEET LOS ANGELES COUNTY PUBLIC WORKS OR CALIFORNIA STATE HIGHWAY REQUIREMENTS IN ACCORDANCE WITH PERMITS.
14. FULL COMPLIANCE WITH SECTION 306-1.3.4 OF THE STD. SPECIFICATIONS WILL BE REQUIRED FOR BACKFILL IN STREETS. CERTIFICATION OF BACKFILL COMPACTION AND SAND EQUIVALENTS BY A QUALIFIED, REGISTERED TESTING LABORATORY SHALL BE PROVIDED BY THE PERMITTEE PRIOR TO THE ISSUANCE OF A CERTIFICATE OF PARTIAL ACCEPTANCE.
15. SPECIAL BACKFILL IN EASEMENT CONSTRUCTION: (A) BACKFILL TRENCH AND REPLACE OTHER EARTH SO AS TO ACHIEVE THE NATURAL OR FINISHED GRADES AND SLOPES SHOWN ON THE GRADING PLAN APPROVED FOR THIS DEVELOPMENT BY THE LAND DEVELOPMENT DIVISION. (B) ALL BACKFILL AND EARTH REPLACED SHALL BE COMPACTED TO A MINIMUM OF 90% OF MAXIMUM DENSITY PER A.S.T.M. STD. METHOD OF TEST D698-57T AS MODIFIED. ACCEPTABLE CERTIFICATION OF SUCH COMPACTION SHALL BE SUBMITTED TO THE CONSTRUCTION DIVISION, DEPT. OF PUBLIC WORKS.

THE FOLLOWING LATEST REVISED STANDARD PLANS ON FILE IN THE OFFICE OF THE DEPARTMENT OF PUBLIC WORKS SHALL APPLY IN THE CONSTRUCTION OF THIS PROJECT.

LEGEND	S-1
MINIMUM PUBLIC SAFETY REQUIREMENTS	S-2
BRICK MANHOLE	S-3
STANDARD MANHOLE STEP	S-17
BEDDING FOR SEWER PIPE	S-21
CRADLING AND ENCASMENT	S-23
WYE OR TEE SUPPORT	S-26
ALLOWABLE TRENCH WIDTHS	S-33
LOCKING MANHOLE FRAME AND COVER	S-35
NON-REINFORCED PRECAST CONCRETE MANHOLE	S-36

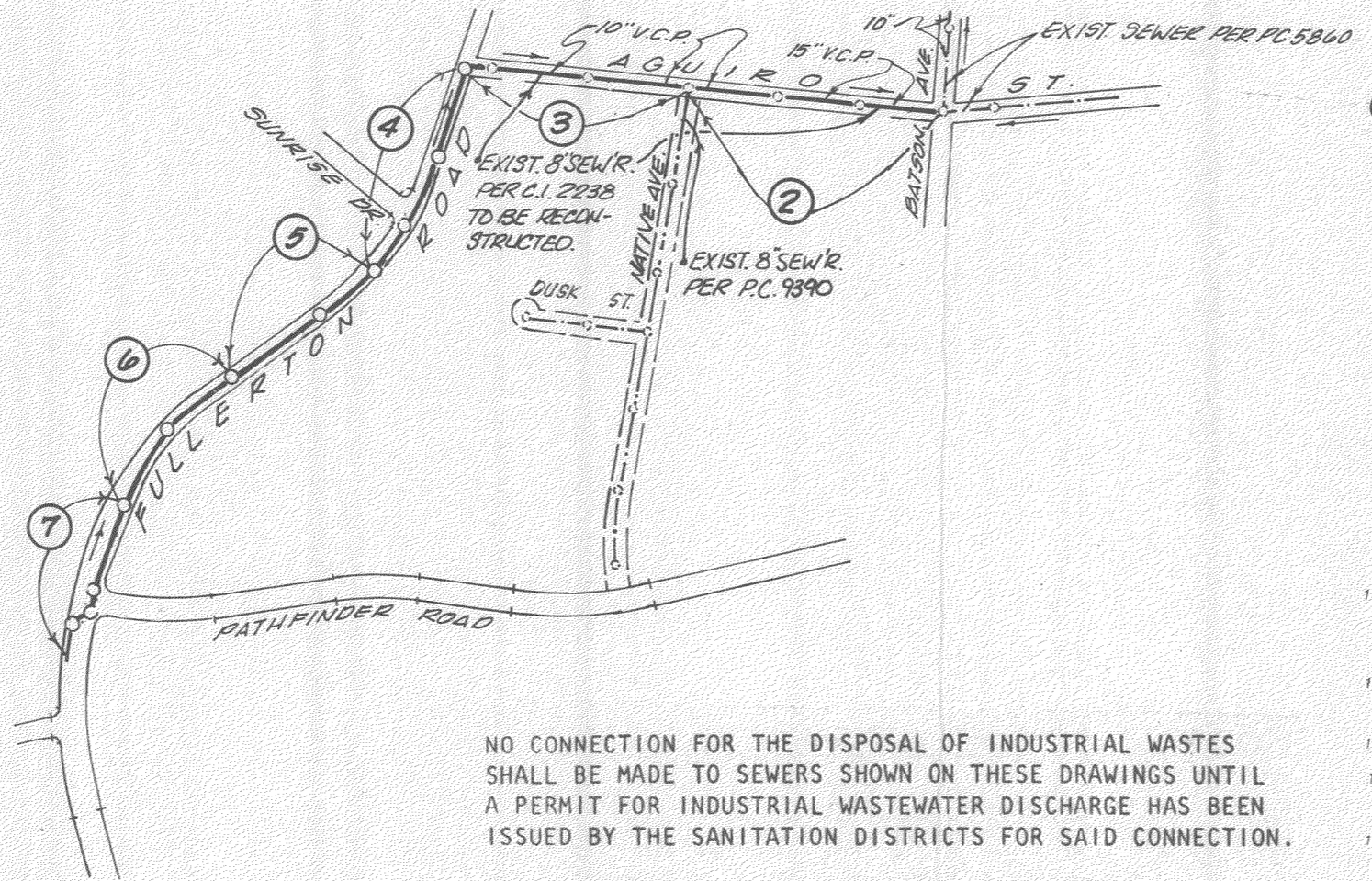
### COUNTY OF LOS ANGELES, CALIFORNIA

THOMAS A. TIDEMANSON DIRECTOR OF PUBLIC WORKS  
 CHARLES W. CARRY CHIEF ENGINEER

APPROVED Dean E. Hothorn 4/14/89 (DATE)  
 TWH  
 CHECKED Fernand Osorio 4/12/89 (DATE)  
 REG. C.E. NO. 18116

APPROVED Jan A. Puentes 4/25/89 (DATE)  
 JAP  
 OFFICE ENGINEER

LA PUENTE BLDG. DIST. 10

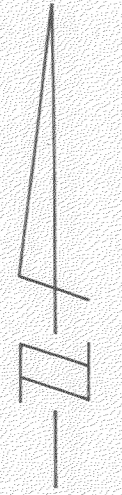


NO CONNECTION FOR THE DISPOSAL OF INDUSTRIAL WASTES SHALL BE MADE TO SEWERS SHOWN ON THESE DRAWINGS UNTIL A PERMIT FOR INDUSTRIAL WASTEWATER DISCHARGE HAS BEEN ISSUED BY THE SANITATION DISTRICTS FOR SAID CONNECTION.

BEFORE BREAKING INTO OR CONSTRUCTION ON A COUNTY SANITATION DISTRICT SEWER AND PRIOR TO FINAL ACCEPTANCE OF THE PROJECT, SANITATION DISTRICT INSPECTOR SHALL BE NOTIFIED BY PHONE (818) 962-8605 SO THAT REQUIRED INSPECTION CAN BE MADE.

### INDEX MAP

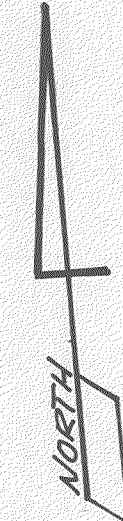
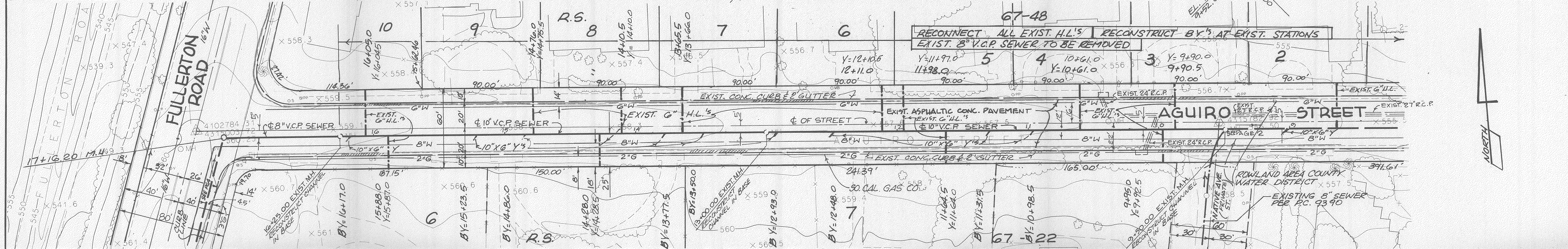
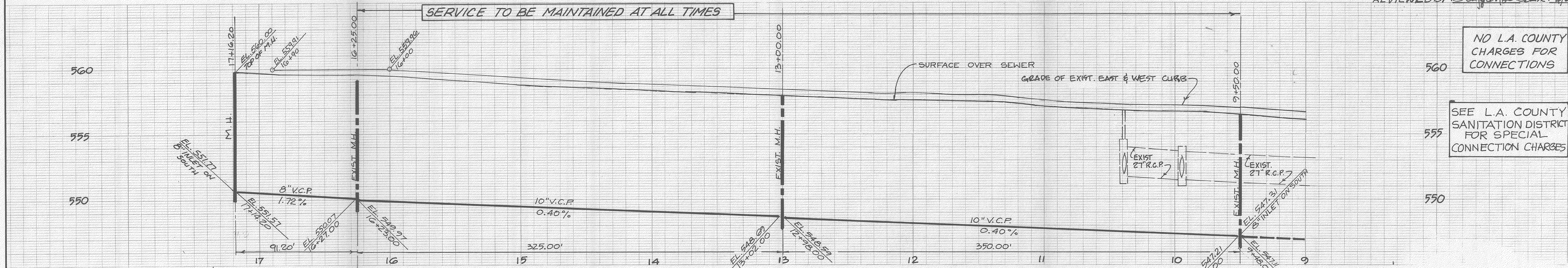
P.C. 10898  
 FULLERTON ROAD & AGUIRO ST.  
 SCALE 1"=600'





NO L.A. COUNTY CHARGES FOR CONNECTIONS

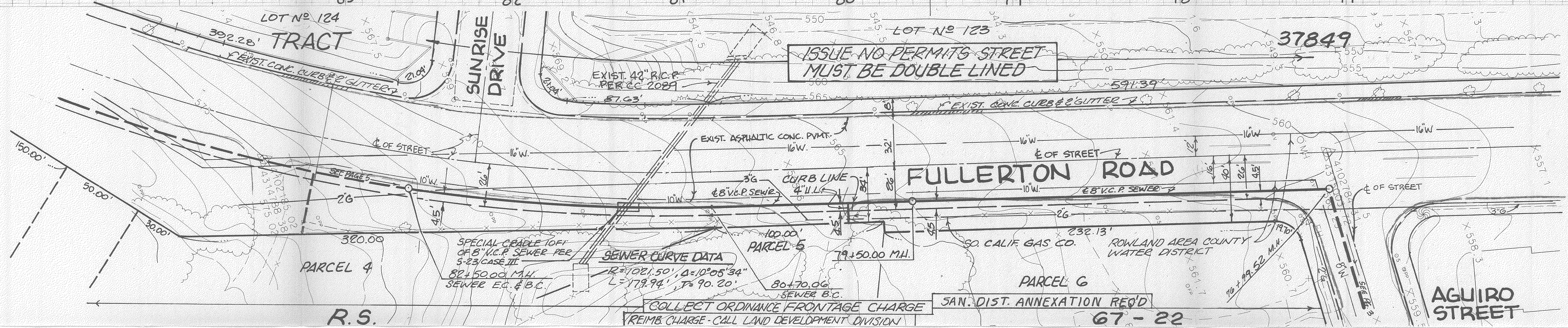
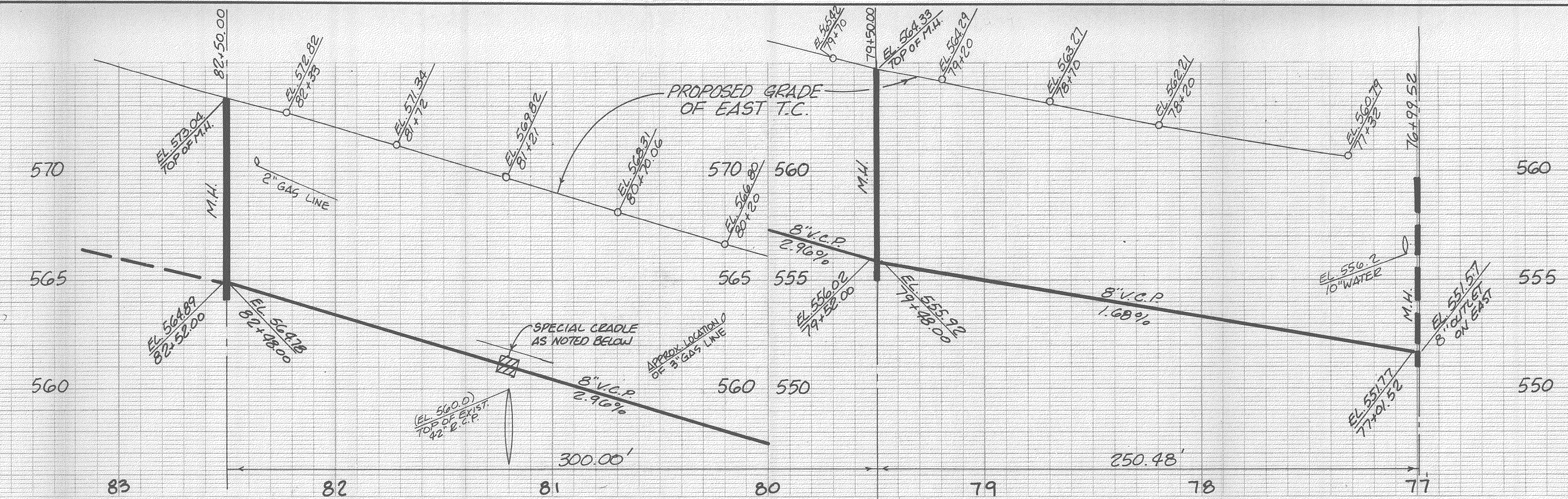
SEE L.A. COUNTY SANITATION DISTRICT FOR SPECIAL CONNECTION CHARGES



COLLECT CHARGES AS INDICATED

SEE L.A. COUNTY SANITATION DISTRICT FOR SPECIAL CONNECTION CHARGES

NOTE: ELEVATIONS FOR WATER & GAS LINES ARE APPROXIMATE, CONTRACTOR TO VERIFY LOCATIONS BEFORE CONSTRUCTION OF SEWER LINE.



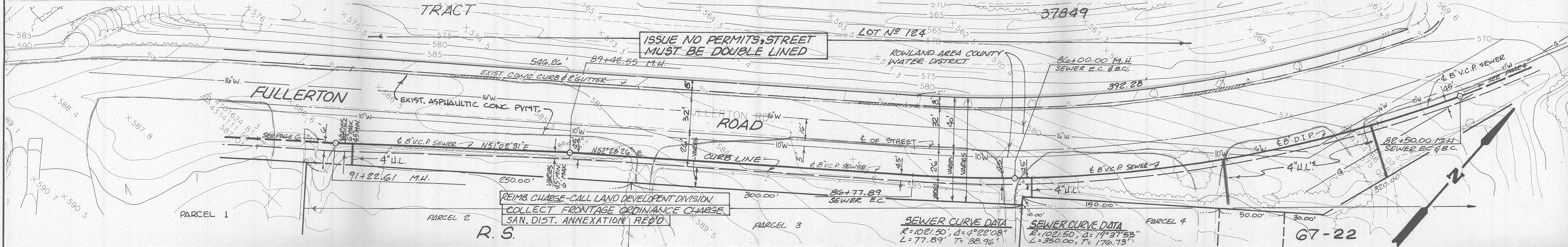
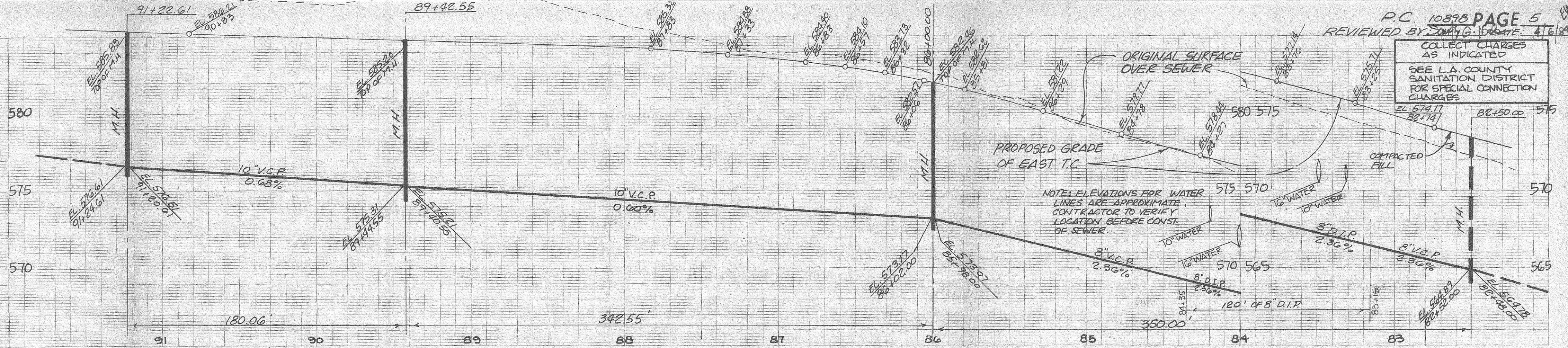
ISSUE NO PERMITS STREET MUST BE DOUBLE LINED

COLLECT ORDINANCE FRONTAGE CHARGE  
 REIMB CHARGE - CALL LAND DEVELOPMENT DIVISION

SAN. DIST. ANNEXATION REQ'D

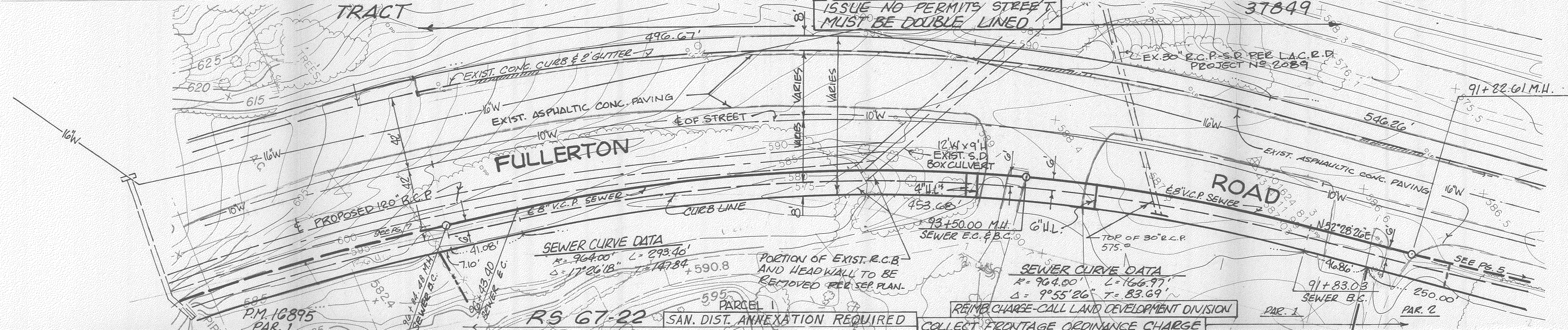
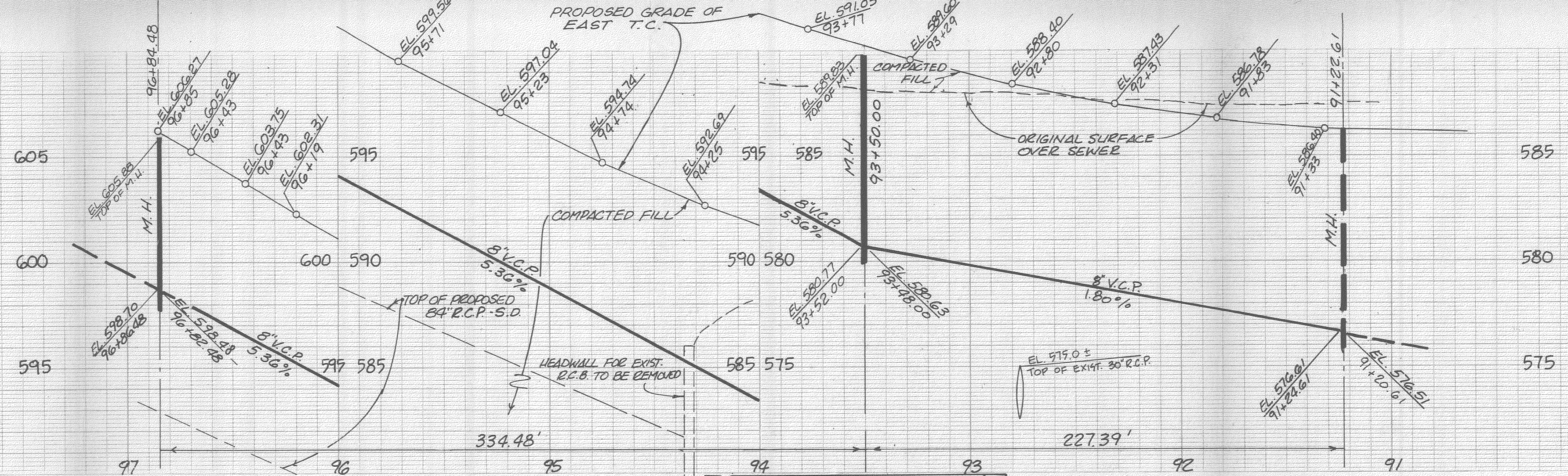
67-22

COLLECT CHARGES AS INDICATED  
 SEE L.A. COUNTY SANITATION DISTRICT FOR SPECIAL CONNECTION CHARGES



COLLECT CHARGES AS INDICATED

SEE L.A. COUNTY SANITATION DISTRICT FOR SPECIAL CONNECTION CHARGES



ISSUE NO PERMITS STREET MUST BE DOUBLE LINED

SEWER CURVE DATA  
 $R = 964.00'$   $L = 293.46'$   
 $\Delta = 17^{\circ}26'18''$   $T = 147.84'$   
 $+590.8$

SEWER CURVE DATA  
 $R = 964.00'$   $L = 166.97'$   
 $\Delta = 9^{\circ}55'26''$   $T = 83.69'$

PORTION OF EXIST. R.C.B. AND HEADWALL TO BE REMOVED PER SEP. PLAN.

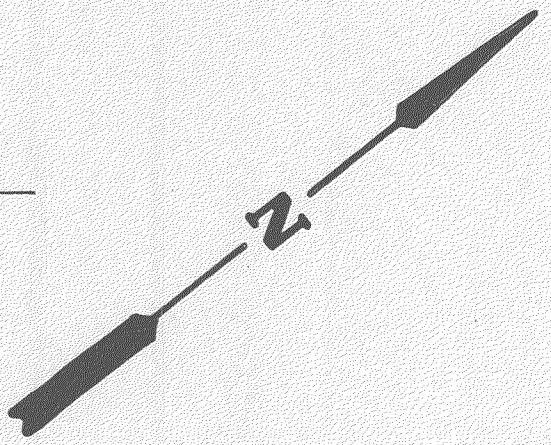
REIMBURSEMENT-CALL LAND DEVELOPMENT DIVISION  
 COLLECT FRONTAGE ORDINANCE CHARGE

RS 67-22

SAN. DIST. ANNEXATION REQUIRED

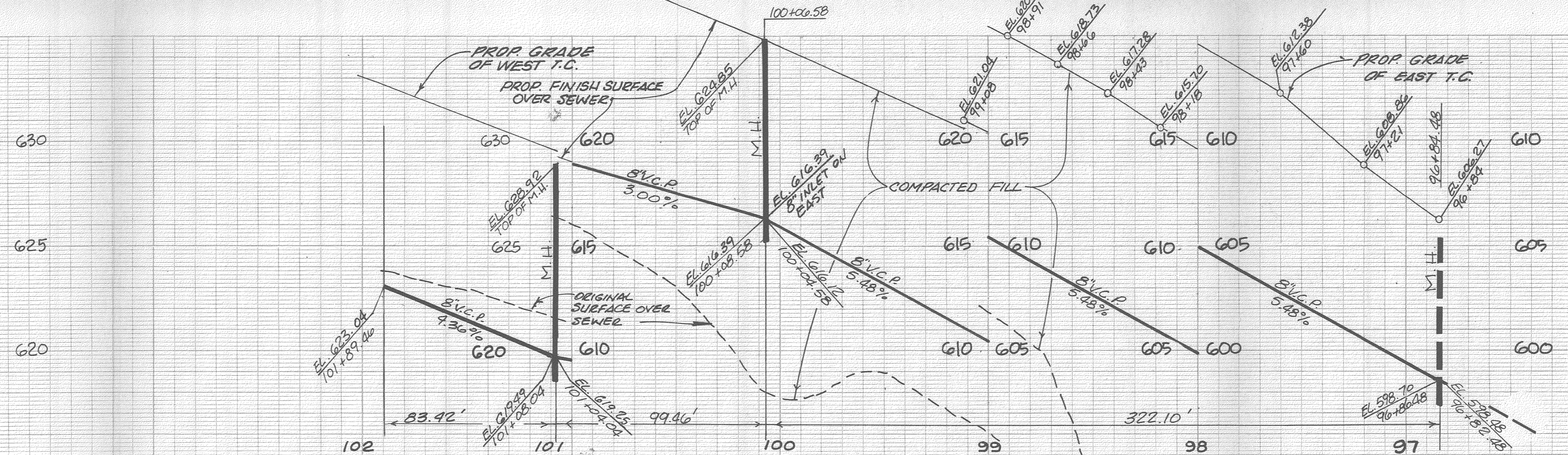
PAR. 1

PAR. 2



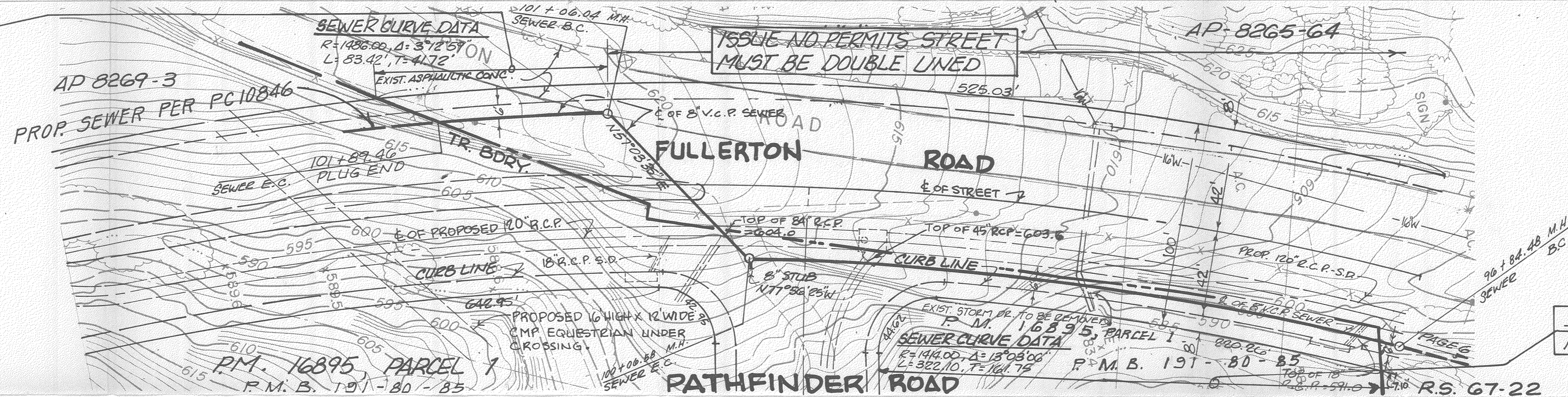
COLLECT CHARGES AS INDICATED

SEE L.A. COUNTY SANITATION DISTRICT FOR SPECIAL CONNECTION CHARGES



COLLECT ORDINANCE FRONTAGE CHARGE  
 REIMB. CHARGE-CALL LAND DEV. DIV.  
 SAN. DIST. ANNEX. REQ'D.

ISSUE NO PERMITS STREET  
 MUST BE DOUBLE LINED



SAN. DIST. ANNEX. REQ'D.  
 REIMB. CHARGE-CALL LAND DEV. DIV.

