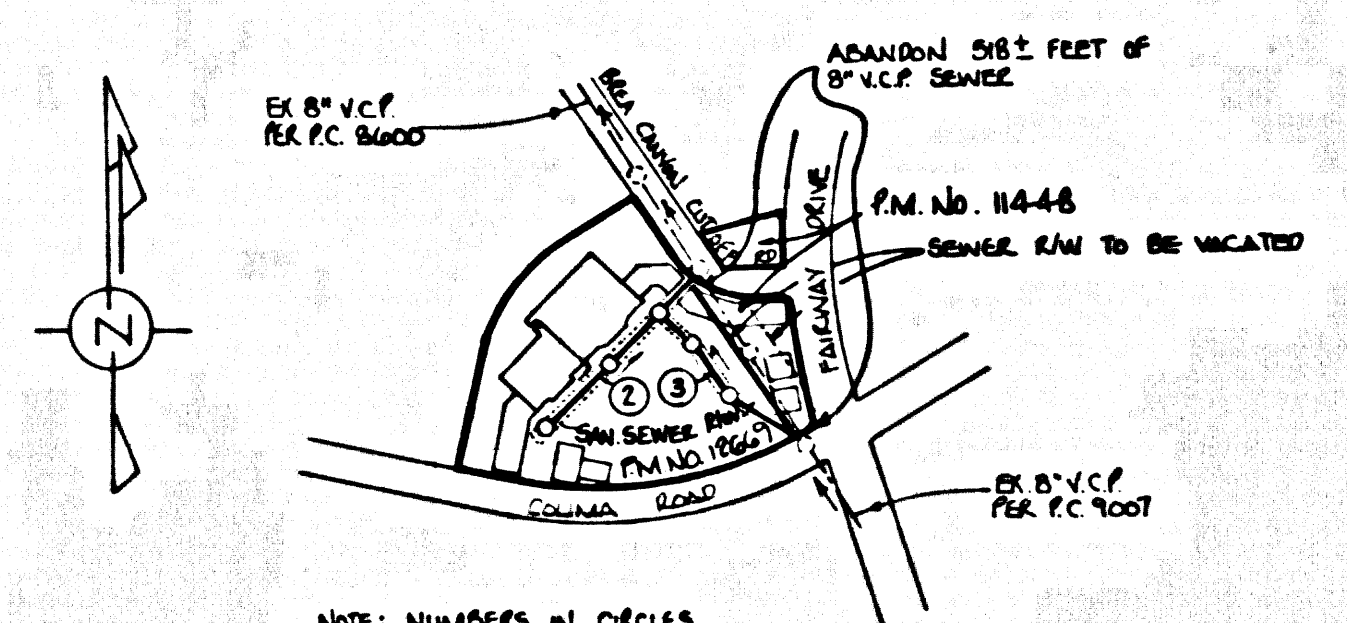


B.M. C.G. 4521 ELEV. 567.679
 875 N. TAG IN WLY WALL C.B. 42' 5/16
 ± COLIMA ROAD 4 805' E/O ± BREA
 CANYON CUT-OFF ROAD (70' E/O B.C.E.)

OTTERBEIN QUAD. 19 80



INDEX MAP
 P.C. 10903
 875 NORTH OF COLIMA ROAD SAID
 WEST OF BREA CANYON CUT-OFF ROAD
 SCALE: 1" = 600'

PRIVATE ENGINEER'S NOTICE TO CONTRACTORS

THE EXISTENCE AND LOCATION OF ANY UNDERGROUND UTILITY PIPES OR STRUCTURES SHOWN ON THESE PLANS ARE OBTAINED BY A SEARCH OF THE AVAILABLE RECORDS. TO THE BEST OF OUR KNOWLEDGE THERE ARE NO EXISTING UTILITIES EXCEPT AS SHOWN ON THESE PLANS. THE CONTRACTOR IS REQUIRED TO TAKE PRECAUTIONARY MEASURES TO PROTECT THE UTILITIES SHOWN AND ANY OTHER LINES NOT OF RECORD OR NOT SHOWN ON THESE PLANS. THE CONTRACTOR SHALL BE RESPONSIBLE FOR NOTIFYING "UNDERGROUND SERVICE ALERT" AT 1-800-451-1189 TWO WORKING DAYS PRIOR TO ANY EXCAVATION OR CONSTRUCTION.

Robert F. Pfeiler
 REGISTERED ENGINEER EXPIRES: 5-31-1989
 R.C.E. NO. 12509

GENERAL NOTES:

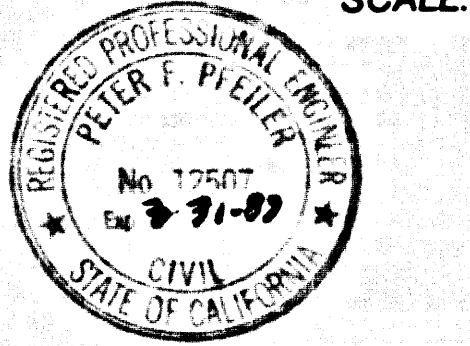
DOUBLE SCALE

- ELEVATIONS ARE IN FEET ABOVE U.S.C. & G.S. SEA LEVEL UNLESS OTHERWISE NOTED.
- NO REVISIONS SHALL BE MADE TO THESE PLANS WITHOUT THE APPROVAL OF THE DEPT. OF PUBLIC WORKS.
- NO REPRESENTATIVE OF THE DEPT. OF PUBLIC WORKS WILL SURVEY OR LAY OUT ANY PORTION OF THE WORK.
- GRADES TO WHICH THIS IMPROVEMENT IS TO BE CONSTRUCTED ARE SHOWN ON PLANS AND PROFILES. GRADE POINTS FOR TOP OF CURBS, CENTER LINE OF STREETS OR ALLEYS ARE SHOWN BY CIRCLES ON PROFILES. AT ALL POINTS BETWEEN DESIGNATED POINTS THE GRADE SHALL BE ESTABLISHED SO AS TO CONFORM TO A STRAIGHT LINE DRAWN BETWEEN SAID DESIGNATED POINTS.
- THE PRIVATE ENGINEER SHALL FURNISH THE DEPT. OF PUBLIC WORKS WITH GRADE SHEETS AND STATIONING FOR ALL HOUSE LATERALS AND "T" OR "Y" BRANCHES AND SHALL PROVIDE STAKES FOR THEM AT THEIR PROPER LOCATIONS WITH STATIONING PLAINLY MARKED. ALL HOUSE LATERALS SHALL BE CONSTRUCTED IN A STRAIGHT ALIGNMENT AT RIGHT ANGLES FROM THE MAIN LINE SEWER EXCEPT AS SHOWN ON THE PLANS. HOUSE LATERALS FROM CHIMNEYS SHALL NOT HAVE AN ANGLE OF LESS THAN 45° WITH THE MAIN LINE SEWER. ANY CHANGE IN ALIGNMENT SHALL BE REQUESTED IN WRITING BY THE PRIVATE ENGINEER.
- THE PRIVATE ENGINEER SHALL FURNISH THE HOUSE LATERAL DEPTH AT THE PROPERTY LINE, BELOW THE TOP OF CURB ELEVATION FOR EACH HOUSE LATERAL ON THE GRADE SHEET.
- BEFORE WORK CAN BE STARTED, THE CONTRACTOR MUST OBTAIN A PERMIT TO EXCAVATE IN COUNTY STREETS FROM THE COUNTY ENGINEER OF L.A. PUBLIC WORKS DEPT. DIST. OFFICE, 48 1/2 AND 704 1/2 FEET TO THE SIDE FROM EACH SIDE OF THE MAIN LINE SEWER. A PERMIT FOR EXCAVATION AND TRENCHES FROM THE STATE OF CALIFORNIA DIVISION OF INDUSTRIAL SAFETY AND A CERTIFICATE OF WORKER'S COMPENSATION INSURANCE FROM THE DEPARTMENT OF PUBLIC WORKS, 705 S. WILSON ST., ALHAMBRA, CA. 91805, 875 PLAN NUMBER AS THE CERTIFICATE INCLUDES TO NOTIFY IN ADVANCE PRIOR TO CANCELLATION OF PERMIT.
- APPROVAL OF THIS PLAN BY THE COUNTY OF LOS ANGELES DOES NOT CONSTITUTE A REPRESENTATION AS TO THE ACCURACY OF THE LOCATION OF OR THE EXISTENCE OR NON-EXISTENCE OF ANY UNDERGROUND UTILITY PIPE, OR STRUCTURE WITHIN THE LIMITS OF THIS PROJECT. THIS NOTE APPLIES TO ALL PAGES.
- REFER TO SECTION 716.4.1 OF THE STANDARD SPECIFICATIONS, REGARDING SAFETY ORDERS.
- PRIOR TO THE ISSUANCE OF THE REQUIRED SEWER CONSTRUCTION PERMIT, THE CONTRACTOR SHALL OBTAIN AND FILE WITH THE DEPT. OF PUBLIC WORKS COPIES OF A PERMIT TO EXCAVATE IN COUNTY STREETS FROM THE COUNTY ENGINEER OF PUBLIC WORKS, A PERMIT FOR EXCAVATION AND TRENCHES FROM THE STATE OF CALIFORNIA DIVISION OF INDUSTRIAL SAFETY AND A CERTIFICATE OF WORKER'S COMPENSATION INSURANCE FROM THE DEPARTMENT OF PUBLIC WORKS, 705 S. WILSON ST., ALHAMBRA, CA. 91805, 875 PLAN NUMBER AS THE CERTIFICATE INCLUDES TO NOTIFY IN ADVANCE PRIOR TO CANCELLATION OF PERMIT.

PROFILE, ALIGNMENT AND GRADE OF
SANITARY SEWERS
 TO BE CONSTRUCTED IN

R/W NORTH OF COLIMA ROAD AND
 WEST OF BREA CANYON CUT-OFF ROAD
PRIVATE CONTRACT NO. 10903
INDEX U-137

2 SHEETS; 3 PAGES
 SCALE: VERT. 1" = 4'
 HORIZ. 1" = 40'
 JULY 5, 1988
 PREPARED IN THE OFFICES OF
PFEILER & ASSOCIATES ENGINEERS, INC.
 675 N. DIAMOND BLVD., DUNSMuir Bldg., CA. 91705
 BY: *Robert F. Pfeiler*
 PETER E. PFEILER, REG. C.E. 12509



THE FOLLOWING LATEST REVISION STANDARD PLANS ON FILE IN THE OFFICE OF THE DEPARTMENT OF PUBLIC WORKS SHALL APPLY IN THE CONSTRUCTION OF THIS PROJECT.

LEGEND	
MINIMUM PUBLIC SAFETY REQUIREMENTS	8-1
BRICK MANHOLE	8-2
STANDARD MANHOLE STEP	8-17
RECORD FOR SEWER PIPE	8-21
CHOKING AND ENGAGEMENT	8-22
WIRE OR TIE SUPPORT	8-26
ALLOWABLE TRENCH WIDTHS	8-28
LOADING MANHOLE FRAME AND COVER	8-28
NON-REINFORCED PRECAST CONCRETE MANHOLE	8-28
BREAKAWAY IN ITS MAXIMUM	8-29

CONSTRUCTION NOTES:

- WORK SHALL BE CONSTRUCTED ACCORDING TO THE STANDARD SPECIFICATIONS FOR PUBLIC WORKS CONSTRUCTION (1988 EDITION) AND DEPT. P.W. 100. SPECIAL PROVISIONS FOR THE CONSTRUCTION OF SANITARY SEWERS DATED SEPT. 31, 1978 AND SHALL BE PROSECUTED ONLY IN THE PRESENCE OF THE DEPT. OF PUBLIC WORKS.
- THE CONTRACTOR SHALL NOTIFY THE CONSTRUCTION DIV. PUBLIC WORKS DEPT. TEL. (818) 498-3978 AT LEAST 24 HOURS BEFORE STARTING ANY WORK UNDER THIS CONTRACT.
- HOUSE LATERALS TO BE CONSTRUCTED WITH INVERTS AT PROPERTY LINE 8 FEET BELOW CURB GRADE EXCEPT AS NOTED.
- WYE OR TEE BRANCHES MAY BE USED FOR CONNECTIONS TO MAINLINE SEWERS EXCEPT AS NOTED.
- WYE BRANCHES ONLY MAY BE USED FOR CONNECTIONS TO MAINLINE SEWERS IF A B.C.E.P. IS USED.
- ALL STRUCTURES SHALL BE EITHER BRICK MANHOLES PER 8-2 OR PRECAST CONCRETE MANHOLES PER 8-26 EXCEPT AS NOTED.
- PROVIDE STAKES ON THE PROPERTY LINE OR PROPERTY LINES PROCEEDED AT RIGHT ANGLES TO THE SEWER LINE AT THE CENTER LINE OF EACH MANHOLE.
- MANHOLE TOPS IN IMPROVED RIGHTS OF WAY TO BE LEVELL. WITH FINISHED GRADE.
- VITRIFIED CLAY PIPE JOINTS SHALL BE TYPE "D" OR "E" PER STANDARD SPECIFICATIONS SECTION 208-2.
- IF A POWER POLE IS WITHIN THREE FEET OF THE SEWER, THE SEWER SHALL BE ENCASED, PER 208-2. CASE 2 TWO FEET ON EACH SIDE FROM THE POINT OF INTERFERENCE.
- IF DURING THE COURSE OF CONSTRUCTION IT IS DETERMINED THAT THERE IS LESS THAN FOUR FEET OF COVER OVER THE TOP OF A MAINLINE OR HOUSE LATERAL SEWER WHICH IS NOT INDICATED ON THE PLANS, THE PIPE SHALL BE ENCASED PER 208-2. CASE 2 UNLESS OTHERWISE APPROVED BY THE DEPT. OF PUBLIC WORKS.
- ALL JOINTS BETWEEN CAST IRON PIPE AND VITRIFIED CLAY PIPE SHALL BE MADE WITH A RUBBER SLEEVE JOINT, TYPE "C" OR "D", WITH BUSHING IF NECESSARY PER STANDARD SPECIFICATIONS, SECTION 208-2.
- ALL JOINTS BETWEEN CAST IRON PIPE & B.C.E.P. SHALL BE MADE WITH APPROVED FITTINGS.
- SEWERS TO BE TESTED FOR LEAKAGE PER SECTION 208-1.4 OF THE STANDARD SPECIFICATIONS AND SPECIAL PROVISIONS.
- RESURFACE ALL TRENCHES WITH PAVED AREAS TO MEET L.A. PUBLIC WORKS DEPT. OR CALIFORNIA STATE HIGHWAY REQUIREMENTS IN ACCORDANCE WITH PERMITS.
- FULL COMPLIANCE WITH SECTION 208-1.3.4 OF THE STD. SPEC. WILL BE REQUIRED FOR BACKFILL IN STREETS. TESTING LABORATORY SHALL BE PROVIDED BY THE CONTRACTOR PRIOR TO THE ISSUANCE OF A CERTIFICATE OF PARTIAL ACCEPTANCE.
- SPECIAL BACKFILL OR EASEMENT CONSTRUCTION (OR BACKFILL TRENCH AND REPLACE OTHER EARTH) SO AS TO ACHIEVE THE NATURAL OR FINISHED GRADES AND SLOPES SHOWN ON THE GRADING PLAN APPROVED FOR THE DEVELOPMENT BY THE LAND SUBDIVISION DIVISION. ALL BACKFILL AND EARTH REDUCED SHALL BE COMPACTED TO A MINIMUM OF 90% OF MAXIMUM DENSITY PER A 5.7.4 STD. METHOD OF TEST (D98) BY AN APPROVED ACCEPTABLE CERTIFICATION OF SUCH COMPACTION SHALL BE SUBMITTED TO THE CONSTRUCTION DIV. PUBLIC WORKS DEPT.

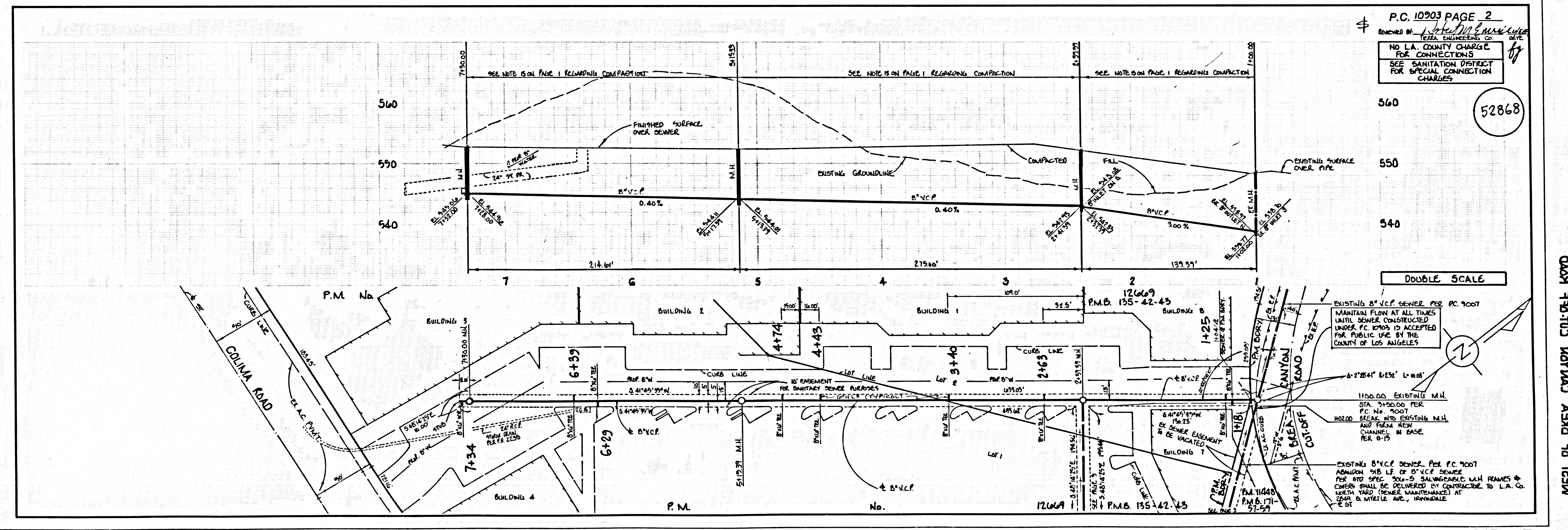
COUNTY OF LOS ANGELES, CALIFORNIA
 THOMAS A. TIDEMANSON, DIRECTOR
 DEPARTMENT OF PUBLIC WORKS
 APPROVED: *Dean Johnson* 6/15/89
 DATE: 6/15/89
 APPROVED: *Charles W. Carry*
 DATE: 6/15/89
 CHECKED: *Neddy* 6/15/89
 DATE: 6/15/89
 REG. C.E. NO. 8350
 SAN. DIVISION BLDG. DIST. 10

NO CONNECTION FOR THE DISPOSAL OF INDUSTRIAL WASTES SHALL BE MADE TO SEWERS SHOWN ON THESE DRAWINGS UNTIL A PERMIT FOR INDUSTRIAL WASTEWATER DISCHARGE HAS BEEN ISSUED BY THE SANITATION DISTRICTS FOR SAID CONNECTION.

BEFORE BREAKING INTO OR CONSTRUCTION ON A COUNTY SANITATION DISTRICT SEWER AND PRIOR TO FINAL ACCEPTANCE OF THE PROJECT, SANITATION DISTRICT INSPECTOR SHALL BE NOTIFIED BY PHONE (818) 362-8605 SO THAT REQUIRED INSPECTION CAN BE MADE.

APPROVAL OF THIS PLAN BY THE LAND DEVELOPMENT DIVISION IS BASED ON A REVIEW BY AN ENGINEERING CONSULTANT UNDER CONTRACT WITH THE COUNTY OF LOS ANGELES.

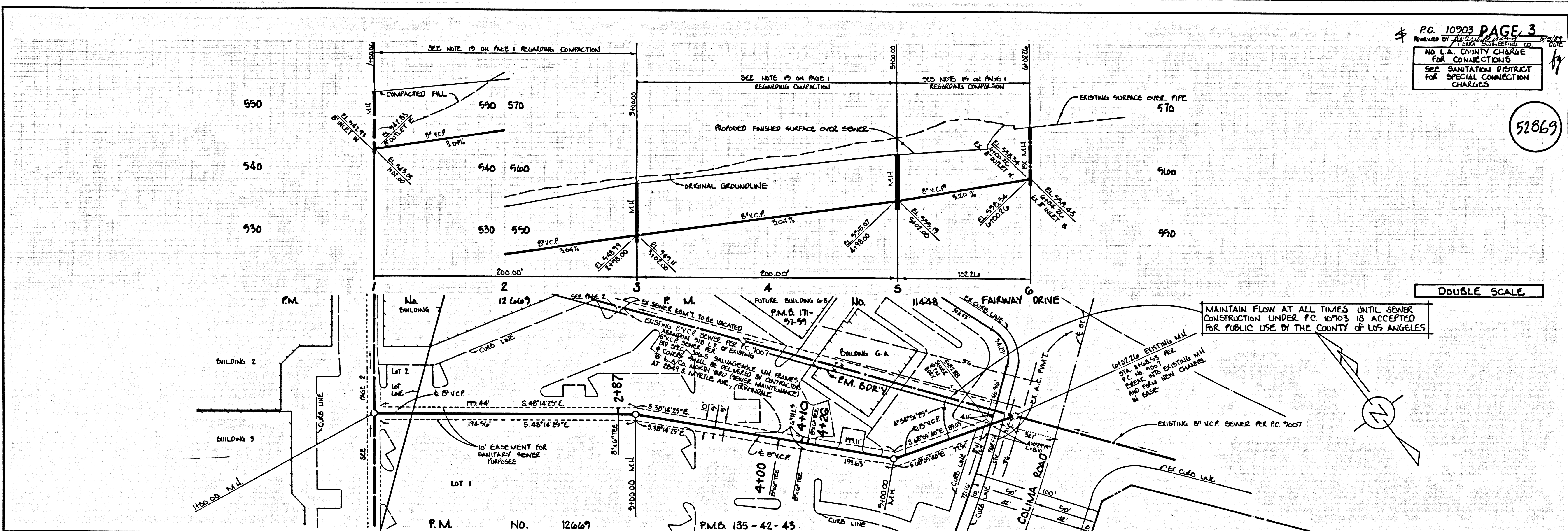
ABANDON 510± FEET OF 8" V.C.P. SEWER AFTER SEWER CONSTRUCTED UNDER P.C. 10903 IS ACCEPTED FOR PUBLIC USE BY THE COUNTY OF LOS ANGELES.



P.C. 10903 PAGE 2
 REVIEWED BY: *Robert F. Pfeiler*
 PFEILER ENGINEERS, INC.
 NO L.A. COUNTY CHARGE FOR CONNECTIONS
 SEE SANITATION DISTRICT FOR SPECIAL CONNECTION CHARGES

WEST OF BREA CANYON CUT-OFF ROAD NORTH OF COLIMA ROAD

SD-5



P.C. 10703 PAGE 3
 REVIEWED BY: [Signature]
 NO L.A. COUNTY CHARGE FOR CONNECTIONS
 SEE SANITATION DISTRICT FOR SPECIAL CONNECTION CHARGES

52869

MAINTAIN FLOW AT ALL TIMES UNTIL SEWER CONSTRUCTION UNDER P.C. 10703 IS ACCEPTED FOR PUBLIC USE BY THE COUNTY OF LOS ANGELES

PAGE

QUA QUA AMIJO TO HTRM WIS
 QUA FTO TIO LAYMIA KEA TO TEM

SD-5.1