

SANITARY SEWERS

TO BE CONSTRUCTED IN
TRACT NO. 43102

PRIVATE CONTRACT NO. 10923

INDEX: A-93
W.S. 62

2 SHEETS, 3 PAGES
SCALE: HORIZ. 1" = 40'
VERT. 1" = 4'

NOVEMBER, 1968
PREPARED IN THE OFFICES OF
KETH ENGINEERING
1808 E. PALMDALE BL. STE. D
PALMDALE, CA 93550
BY: *Myron E. Blum*
REG. C.E. NO. 27465

53069

GENERAL NOTES:

- ELEVATIONS ARE IN FEET ABOVE U.S.C. & G.S. MEAN LEVEL DATUM OF 1929.
- NO REVISIONS SHALL BE MADE IN THESE PLANS WITHOUT THE APPROVAL OF THE DIRECTOR OF PUBLIC WORKS.
- NO REPRESENTATIVE OF THE DEPARTMENT OF PUBLIC WORKS WILL SURVEY OR LAY OUT ANY PORTION OF THE WORK.
- GRADES TO WHICH THIS IMPROVEMENT IS TO BE CONSTRUCTED ARE SHOWN ON PLANS AND PROFILES. GRADE POINTS FOR TOP OF CURVE, CENTER LINE OF STREETS OR CENTER LINE OF ALLEYS ARE SHOWN BY CIRCLES ON PLANS. ALL POINTS TO BE TYPED OR PRINTED TO THE RIGHT OF THE GRADE SHALL BE ESTABLISHED SO AS TO CONFORM TO A STRAIGHT LINE DRAWN BETWEEN SAID DESIGNATED POINTS.
- THE PRIVATE ENGINEER SHALL FURNISH THE DEPARTMENT OF PUBLIC WORKS WITH GRADE SHEETS AND STATIONING FOR ALL HOUSE LATERALS AND "T" OR "Y" BRANCHES; AND SHALL PROVIDE STAKES FOR THEM AT THEIR PROPER LOCATIONS WITH Satisfactory PLASTIC MARKED ALL HOUSE LATERALS SHALL BE CONSTRUCTED AT A MINIMUM ANGLE OF 45 DEGREES FROM THE MAIN LINE SEWER EXCEPT AS SHOWN ON THE PLANS. HOUSE LATERALS FROM CHIMNEYS SHALL NOT HAVE AN ANGLE OF LESS THAN 45 DEGREES WITH THE MAIN LINE SEWER. ANY CHANGE IN ALIGNMENT SHALL BE REQUESTED IN WRITING BY THE PRIVATE ENGINEER.
- THE PRIVATE ENGINEER SHALL FURNISH THE HOUSE LATERAL DEPTH AT THE PROPERTY LINE BELOW THE TOP OF CURVE ELEVATION FOR EACH HOUSE LATERAL ON THE GRADE SHEET.
- BEFORE WORK CAN BE STARTED THE CONTRACTOR MUST OBTAIN A PERMIT TO EXCAVATE IN COUNTY STREETS FROM THE CONSTRUCTION DIVISION OF THE LOS ANGELES DEPARTMENT OF PUBLIC WORKS. THE PERMIT FEE IS \$100.00 AND IS PAYABLE TO THE DIRECTOR OF PUBLIC WORKS, 900 S. FIDELITY BL., LOS ANGELES, CALIFORNIA 90012. TO COVER THE COST OF CONSTRUCTION INSPECTION AND RECORD PLANS.
- IF WORK IS TO BE DONE IN A STATE HIGHWAY, A PERMIT MUST BE OBTAINED FROM THE STATE OF CALIFORNIA, DIVISION OF HIGHWAYS, 120 SOUTH BRIDGE STREET, LOS ANGELES, CALIFORNIA.
- APPROVAL OF THIS PLAN BY THE COUNTY OF LOS ANGELES DOES NOT CONSTITUTE A REPRESENTATION AS TO THE ACCURACY OF THE LOCATION OF OR THE EXISTENCE OR NON-EXISTENCE OF ANY UNDERGROUND UTILITY PIPE OR STRUCTURE WITHIN THE LIMITS OF THIS PROJECT. THIS NOTE APPLIES TO ALL PAGES.
- REFER TO SECTION 710.11 OF THE STANDARD SPECIFICATIONS, RESUBMITTING SAFETY ORDERS.
- REFER TO THE ISSUANCE OF THE REQUIRED SEWER CONSTRUCTION PERMIT. THE CONTRACTOR SHALL OBTAIN AND FILE WITH THE DEPARTMENT OF PUBLIC WORKS COPIES OF A PERMIT TO EXCAVATE IN COUNTY STREETS FROM THE ROAD ELEMENT AT THE DEPARTMENT OF PUBLIC WORKS. A PERMIT FOR EXCAVATIONS AND TRENCHES FROM THE STATE OF CALIFORNIA, DIVISION OF INDUSTRIAL SAFETY AND A CERTIFICATE OF WORKERS COMPENSATION INSURANCE WITH THE DEPARTMENT OF PUBLIC WORKS, 900 S. FIDELITY BL., LOS ANGELES, CALIFORNIA 90012, SHALL BE AS THE CERTIFICATE HOLDER TO BE NOTIFIED 30 DAYS PRIOR TO CANCELLATION OF PERMIT.

CONSTRUCTION NOTES:

- WORK SHALL BE CONSTRUCTED ACCORDING TO THE STANDARD SPECIFICATIONS FOR PUBLIC WORKS CONSTRUCTION, 1968 EDITION AND DEPARTMENT OF PUBLIC WORKS SPECIAL PROVISIONS FOR THE CONSTRUCTION OF SANITARY SEWERS, 5th EDITION, SEPTEMBER 1974.
- THE CONTRACTOR SHALL NOTIFY THE CONSTRUCTION DIVISION BY TELEPHONE, (800)468-3828, AT LEAST TWENTY-FOUR HOURS BEFORE STARTING ANY WORK UNDER THIS CONTRACT.
- HOUSE LATERALS TO BE CONSTRUCTED WITH INVERTS AT PROPERTY LINE 6 FEET BELOW CURB GRADE EXCEPT AS NOTED.
- WYS OR TEE BRANCHES MAY BE USED FOR CONNECTIONS TO MAINLINE SEWERS EXCEPT AS NOTED.
- ALL STRUCTURES SHALL BE EITHER BRICK MANHOLES PER S-8 OR PRECAST CONCRETE MANHOLES PER S-36, EXCEPT AS NOTED.
- PROVIDE STAKES ON THE PROPERTY LINE OR PROPERTY LINES PRODUCED AT RIGHT ANGLES TO THE SEWER LINE AT THE CENTER LINE OF EACH MANHOLE.
- MANHOLE TOPS IN UNIMPROVED RIGHTS OF WAY TO BE SIX INCHES ABOVE FINISHED GRADE.
- WRITTEN CLAY PIPE JOINTS SHALL BE TYPE "C" OR "H" PER STANDARD SPECIFICATIONS SECTION 200-2.
- IF A POWER POLE IS WITHIN THREE FEET OF THE SEWER, THE SEWER SHALL BE ENCASED PER S-26, CASE 1 TWO FEET ON EACH SIDE FROM THE POINT OF INTERFERENCE.
- IF DURING THE COURSE OF CONSTRUCTION IT IS DETERMINED THAT THERE IS LESS THAN FOUR FEET OF COVER OVER THE TOP OF A MAIN LINE OR HOUSE LATERAL, "C" P. SEWER WHICH IS NOT INDICATED ON THE PLANS, THE PIPE SHALL BE ENCASED PER S-26, CASE 1 UNLESS OTHERWISE APPROVED BY THE DIRECTOR OF PUBLIC WORKS.
- ALL JOINTS BETWEEN CAST IRON PIPE AND WRITTEN CLAY PIPE SHALL BE MADE WITH A RUBBER SLEEVE JOINT, TYPE "C" OR "H", WITH BUSHING IF NECESSARY PER STANDARD SPECIFICATIONS SECTION 200-2.
- SEWERS TO BE TESTED FOR LEAKAGE PER SECTION 200-1.4 OF THE STANDARD SPECIFICATIONS AND SPECIAL PROVISIONS.
- RESURFACE ALL TRENCHES WITHIN PAVED AREAS TO MEET LOS ANGELES COUNTY PUBLIC WORKS OR CALIFORNIA STATE HIGHWAY REQUIREMENTS IN ACCORDANCE WITH PERMITS.
- FULL COMPLIANCE WITH SECTION 200-1.5.4 OF THE STL. SPECIFICATIONS WILL BE REQUIRED FOR BACKFILL IN STREETS. CERTIFICATIONS OF BACKFILL COMPOSITION AND SAND COMPACTION BY A QUALIFIED INDEPENDENT TESTING LABORATORY SHALL BE PROVIDED BY THE PERMITTEE PRIOR TO THE ISSUANCE OF A CERTIFICATE OF PARTIAL ACCEPTANCE.
- SPECIAL BACKFILL IN EASEMENT CONSTRUCTION (A) BACKFILL TRENCH AND REPLACE OTHER EARTH SO AS TO ACHIEVE THE NATURAL OR FINISHED GRADES AND SLOPES SHOWN ON THE GRADING PLAN APPROVED FOR THIS DEVELOPMENT BY THE BUILDING AND SAFETY DIVISION. (B) ALL BACKFILL AND EARTH REPLACED SHALL BE CONSTRUCTED TO A MINIMUM OF 90% OF MAXIMUM DENSITY PER A.S.T.M. METHOD OF TEST D95. (C) AS MODIFIED, ACCEPTABLE CERTIFICATION OF SUCH COMPACTION SHALL BE SUBMITTED TO THE CONSTRUCTION DIVISION, DEPARTMENT OF PUBLIC WORKS.

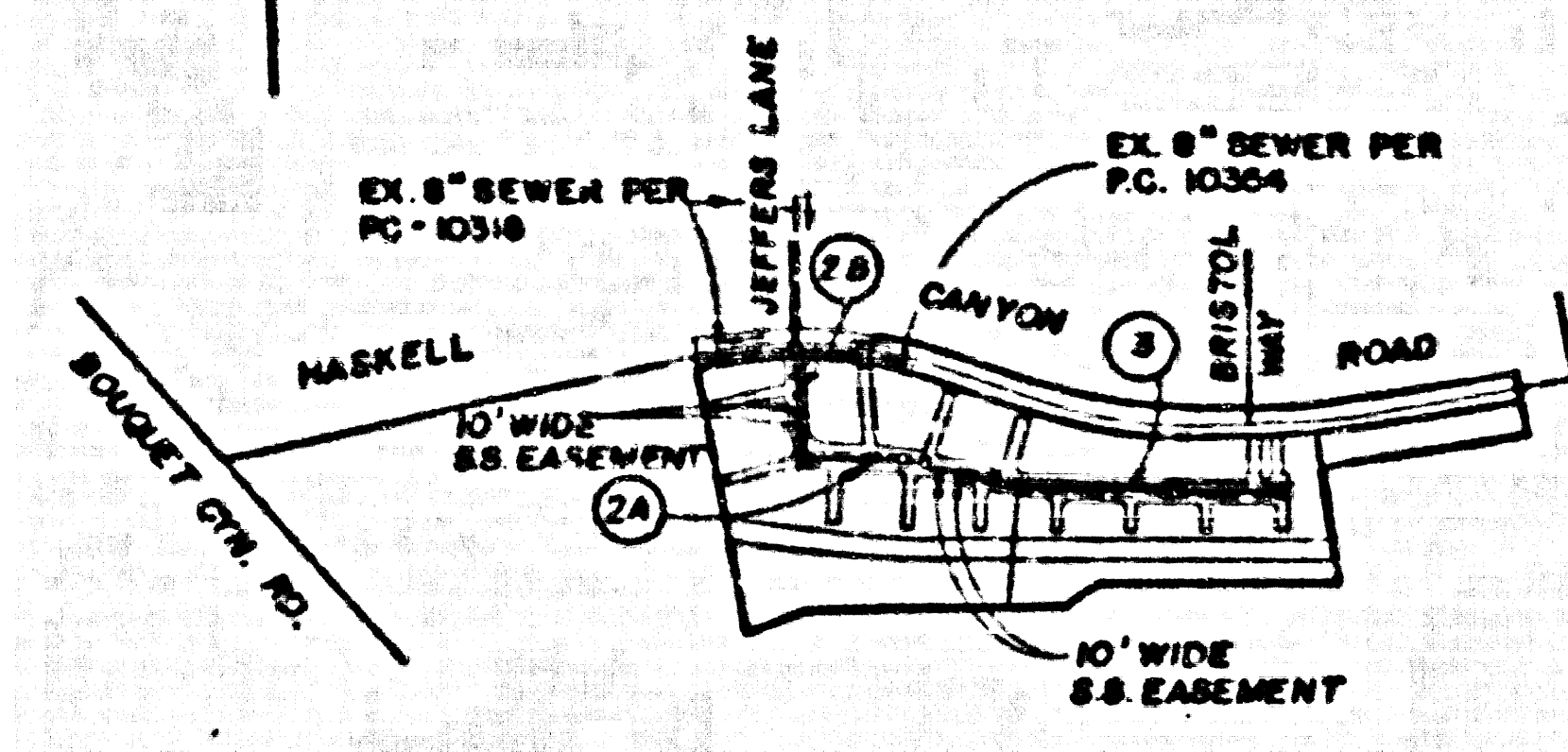
THE FOLLOWING LATEST REVISIONS TO STANDARD PLANS ON FILE IN THE OFFICE OF THE DEPARTMENT OF PUBLIC WORKS SHALL APPLY TO THE CONSTRUCTION OF THIS PROJECT:

REVISION	DESCRIPTION
1	MINIMUM PUBLIC SAFETY REQUIREMENTS
2	BRICK SEWER MANHOLE
3	STANDARD MANHOLE STEP
4	LOADING FOR SEWER PIPE
5	COATING AND EASEMENT
6	WYS OR TEE SUPPORT
7	ALLOWABLE TRENCH WIDTHS
8	LOCKING MANHOLE FRAME AND COVER
9	NON-REINFORCED PRECAST CONCRETE SEWER MANHOLE

COUNTY OF LOS ANGELES, CALIFORNIA
THOMAS A. TIDEMANSON, DIRECTOR OF PUBLIC WORKS
APPROVED: *Dean P. Blum* 2/18/69
CHECKED: *James A. Blum* 2/18/69
REG. C.E. NO. 15116
SANTA CLARITA VALLEY BLDG. DIST. 8.2

CHARLES W. CARRY, CHIEF ENGINEER
APPROVED: *James A. Blum* 2/18/69
REG. C.E. NO. 15116

B.M. CL 3825 ELEV. 1296.201
L.A.C.S. B.M. NOW IN NE COR. COCK BASE CITY OF LA
W.P. P. TOWER #12 2' x 8' 150 FT. W. BOULEVARD
C.Y.M. NO. 8 ON N.W. WILY C.V.L. SUSAN BETH W.W.
MCD (B.M. 2' x 4' - 7 1966)
NEWELL QUAD. 19.83



INDEX MAP
P.C. 10923 TR. NO. 43102
SCALE: 1" = 600'

CONSTRUCTION NOTES CONTD.

10. ALL WYS AND/OR HOUSE LATERALS ARE TO BE LOCATED AT LEAST FIVE FEET APART AND WHEN POSSIBLE NOT CLOSER THAN FIVE FEET TO ANY MANHOLE.

NO CONNECTION FOR THE DISPOSAL OF INDUSTRIAL WASTES SHALL BE MADE TO THE SEWERS SHOWN ON THESE DRAWINGS UNTIL A PERMIT FOR INDUSTRIAL WASTEWATER DISCHARGE HAS BEEN ISSUED BY THE SANITATION DISTRICTS FOR SAID CONNECTION.

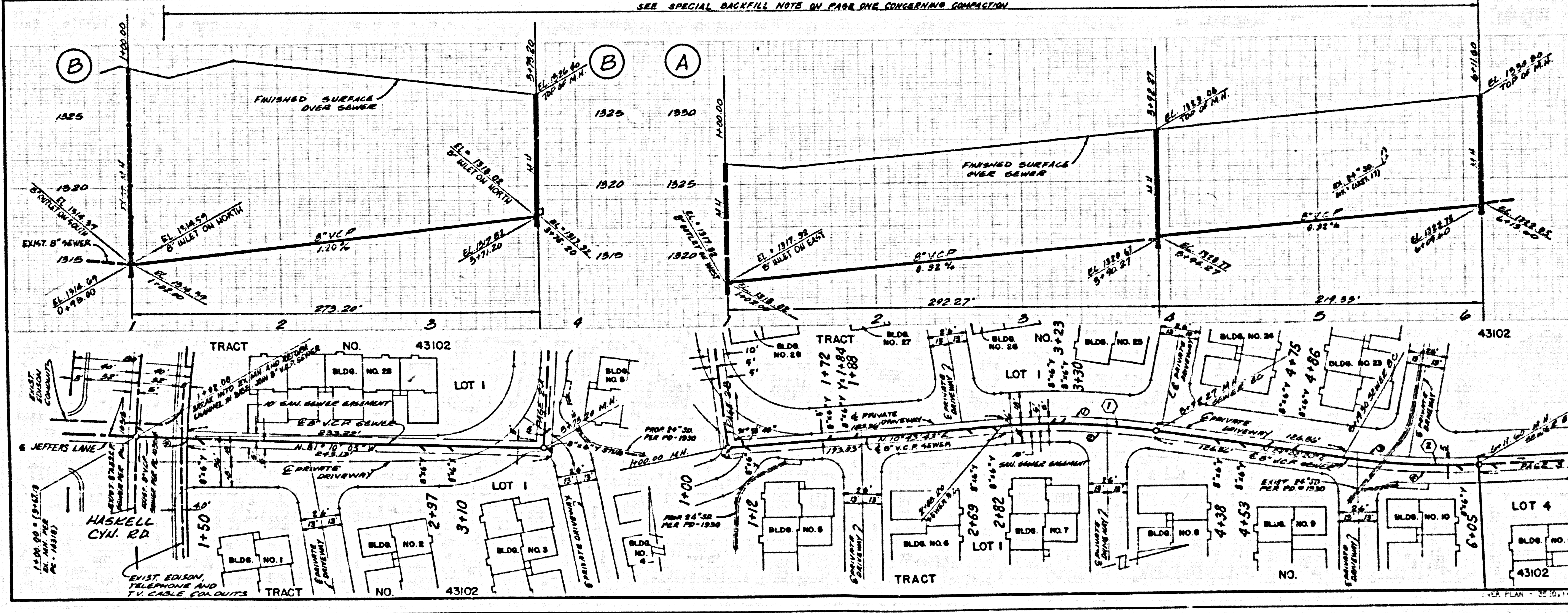
BEFORE BEGINNING ANY CONSTRUCTION ON A COUNTY STREET, THE CONTRACTOR SHALL OBTAIN A PERMIT TO EXCAVATE IN COUNTY STREETS FROM THE CONSTRUCTION DIVISION OF THE LOS ANGELES DEPARTMENT OF PUBLIC WORKS. THE PERMIT FEE IS \$100.00 AND IS PAYABLE TO THE DIRECTOR OF PUBLIC WORKS, 900 S. FIDELITY BL., LOS ANGELES, CALIFORNIA 90012. TO COVER THE COST OF CONSTRUCTION INSPECTION AND RECORD PLANS.

INSTRUCTION NOTE
NUMBER IN CIRCLE INDICATES
PAGE NUMBER

PRIVATE ENGINEER'S NOTICE TO CONTRACTORS
THE EXISTENCE AND LOCATION OF ANY UNDERGROUND UTILITY PIPES OR STRUCTURES SHOWN ON THESE PLANS ARE OBTAINED BY A SEARCH OF THE AVAILABLE RECORDS TO THE BEST OF OUR KNOWLEDGE. THERE ARE NO EXISTING UTILITIES EXCEPT AS SHOWN ON THESE PLANS. THE CONTRACTOR IS REQUIRED TO TAKE DUE PRECAUTIONARY MEASURES TO PROTECT THE UTILITY LINES SHOWN AND ANY OTHER LINES NOT OF RECORD OR NOT SHOWN ON THESE PLANS. THE CONTRACTOR SHALL BE RESPONSIBLE FOR NOTIFYING THE UNDERGROUND SERVICE ALERT AT 1-800-485-4838 TWO WORKING DAYS PRIOR TO ANY EXCAVATION OR CONSTRUCTION.

Myron E. Blum 27465
REGISTERED ENGINEER R.C.E. NO.

ISSUE NO HOUSE CONNECTION PERMITS UNTIL P.C. 10316 & P.C. 10354 HAS BEEN ACCEPTED FOR PUBLIC USE BY THE COUNTY OF LOS ANGELES.
LOTS 2, 3 AND 5 ARE OPEN SPACE LOTS RESTRICTED TO NO CONSTRUCTION AND WILL NOT BE SERVED BY THIS SEWER.



P.C. 10923, PAGE 2
REVIEWED BY: *Samuel G. Blum* 2-6-69
DATE

NO. L.A. CO. CHARGES FOR CONNECTIONS
465 COUNTY SAN. DISTRICTS FOR SPECIAL CONNECTION CHARGES.
53070

SEWER CURVE DATA

STATION	ANGLE	LENGTH	START ELEV.	END ELEV.
1	112° 08'	44.00'	443.00'	443.00'
2	112° 08'	471.00'	443.00'	443.00'
3	6° 35' 29"	280.00'	443.00'	443.00'

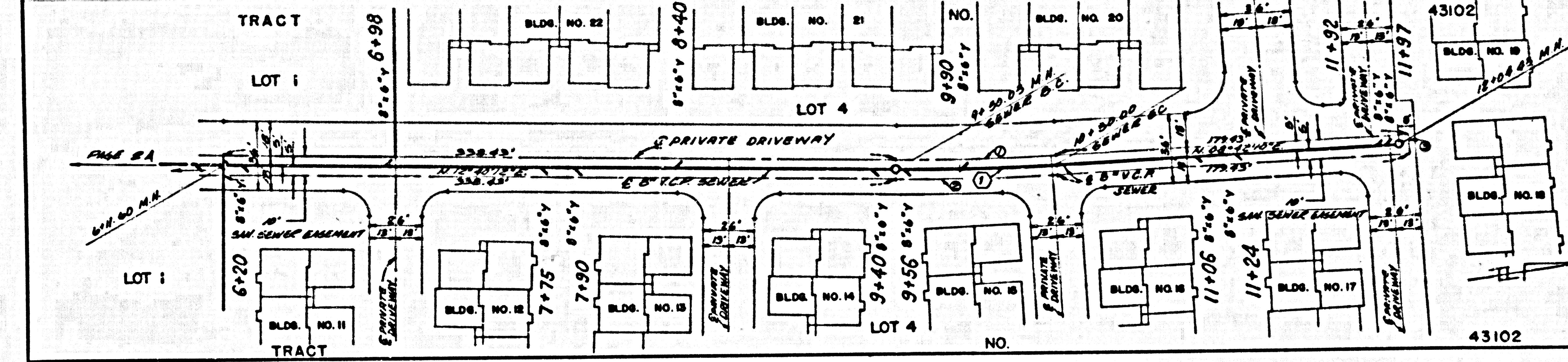
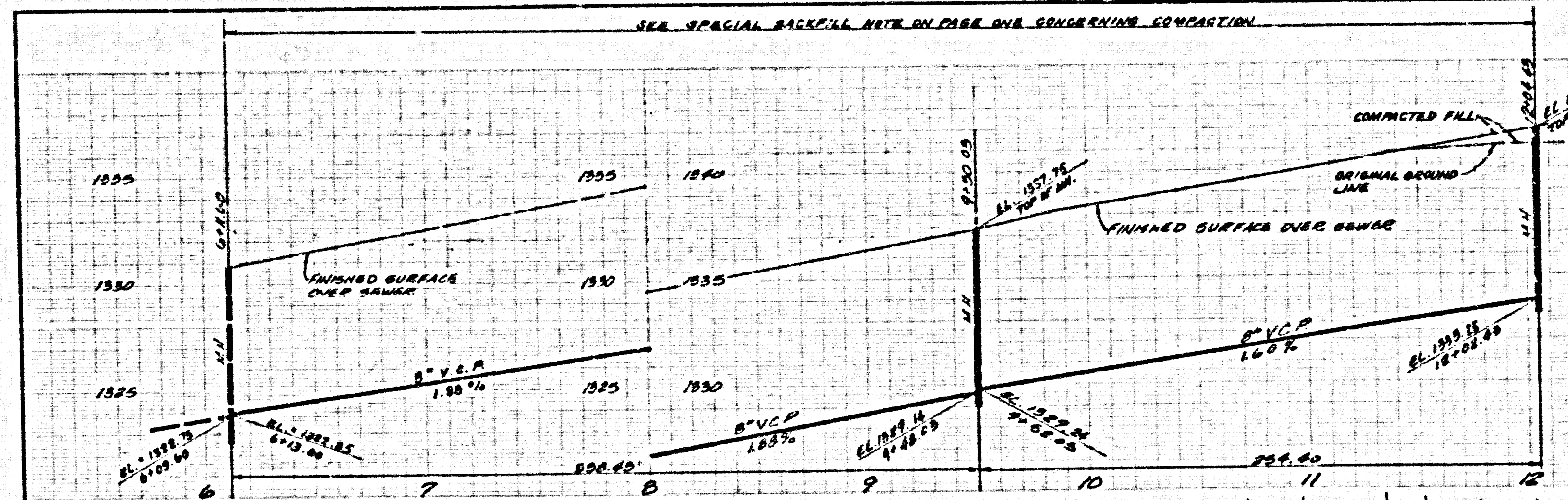
SEWER CURVE DATA

STATION	ANGLE	LENGTH	START ELEV.	END ELEV.
1	112° 08'	44.00'	443.00'	443.00'
2	112° 08'	471.00'	443.00'	443.00'
3	6° 35' 29"	280.00'	443.00'	443.00'

SANTA CLARITA VALLEY BLDG. DIST. 8.2

W. L. A. CO.
 CHARGE FOR
 CONNECTIONS
 SEE COUNTY
 SAN DISTRICTS
 FOR SPECIAL
 CONNECTION
 CHARGES.

53071



SEWER CURVE DATA
 ① Δ = 3° 58' 02"
 R = 155.00'
 L = 79.97'
 T = 44.00'

SEWER EASY DATA			
① Δ BEARING	R	L / DIST	T
① 03° 58' 02"	155.00'	79.97'	44.00'
② 03° 58' 02"	155.00'	79.97'	44.00'
③ 88° 17' 50" E		10.00'	

32601 OF 13501