

GENERAL NOTES - CONT.

1. THE UNDERSIGNED SPECIFICALLY WARRANTS THAT THE PLANS AND SPECIFICATIONS FOR THE SEWER SYSTEM SHOWN ON THESE PLANS AND SPECIFICATIONS ARE COMPLETE AND CORRECT.

2. THE UNDERSIGNED SPECIFICALLY WARRANTS THAT THE PLANS AND SPECIFICATIONS FOR THE SEWER SYSTEM SHOWN ON THESE PLANS AND SPECIFICATIONS ARE COMPLETE AND CORRECT.

3. THE UNDERSIGNED SPECIFICALLY WARRANTS THAT THE PLANS AND SPECIFICATIONS FOR THE SEWER SYSTEM SHOWN ON THESE PLANS AND SPECIFICATIONS ARE COMPLETE AND CORRECT.

4. THE UNDERSIGNED SPECIFICALLY WARRANTS THAT THE PLANS AND SPECIFICATIONS FOR THE SEWER SYSTEM SHOWN ON THESE PLANS AND SPECIFICATIONS ARE COMPLETE AND CORRECT.

5. THE UNDERSIGNED SPECIFICALLY WARRANTS THAT THE PLANS AND SPECIFICATIONS FOR THE SEWER SYSTEM SHOWN ON THESE PLANS AND SPECIFICATIONS ARE COMPLETE AND CORRECT.

STANDARD PLANS - CONT.

1. IN ADDITION TO THE FOLLOWING L.V.M.W.D. STANDARDS, WHICH APPLY TO THE SEWER SYSTEM SHOWN ON THESE PLANS, THE FOLLOWING STANDARDS SHALL APPLY TO THE SEWER SYSTEM SHOWN ON THESE PLANS:

2. THE UNDERSIGNED SPECIFICALLY WARRANTS THAT THE PLANS AND SPECIFICATIONS FOR THE SEWER SYSTEM SHOWN ON THESE PLANS AND SPECIFICATIONS ARE COMPLETE AND CORRECT.

CONSTRUCTION NOTES - CONT.

1. THE UNDERSIGNED SPECIFICALLY WARRANTS THAT THE PLANS AND SPECIFICATIONS FOR THE SEWER SYSTEM SHOWN ON THESE PLANS AND SPECIFICATIONS ARE COMPLETE AND CORRECT.

2. THE UNDERSIGNED SPECIFICALLY WARRANTS THAT THE PLANS AND SPECIFICATIONS FOR THE SEWER SYSTEM SHOWN ON THESE PLANS AND SPECIFICATIONS ARE COMPLETE AND CORRECT.

3. THE UNDERSIGNED SPECIFICALLY WARRANTS THAT THE PLANS AND SPECIFICATIONS FOR THE SEWER SYSTEM SHOWN ON THESE PLANS AND SPECIFICATIONS ARE COMPLETE AND CORRECT.

4. THE UNDERSIGNED SPECIFICALLY WARRANTS THAT THE PLANS AND SPECIFICATIONS FOR THE SEWER SYSTEM SHOWN ON THESE PLANS AND SPECIFICATIONS ARE COMPLETE AND CORRECT.

5. THE UNDERSIGNED SPECIFICALLY WARRANTS THAT THE PLANS AND SPECIFICATIONS FOR THE SEWER SYSTEM SHOWN ON THESE PLANS AND SPECIFICATIONS ARE COMPLETE AND CORRECT.

GENERAL NOTES:

1. ELEVATIONS ARE IN FEET ABOVE U.S.C. & G.S. MEAN SEA LEVEL DATUM OF 1988.

2. NO REVISIONS SHALL BE MADE IN THESE PLANS WITHOUT THE APPROVAL OF THE DIRECTOR OF PUBLIC WORKS.

3. THE UNDERSIGNED SPECIFICALLY WARRANTS THAT THE PLANS AND SPECIFICATIONS FOR THE SEWER SYSTEM SHOWN ON THESE PLANS AND SPECIFICATIONS ARE COMPLETE AND CORRECT.

4. THE UNDERSIGNED SPECIFICALLY WARRANTS THAT THE PLANS AND SPECIFICATIONS FOR THE SEWER SYSTEM SHOWN ON THESE PLANS AND SPECIFICATIONS ARE COMPLETE AND CORRECT.

5. THE UNDERSIGNED SPECIFICALLY WARRANTS THAT THE PLANS AND SPECIFICATIONS FOR THE SEWER SYSTEM SHOWN ON THESE PLANS AND SPECIFICATIONS ARE COMPLETE AND CORRECT.

CONSTRUCTION NOTES:

1. THE UNDERSIGNED SPECIFICALLY WARRANTS THAT THE PLANS AND SPECIFICATIONS FOR THE SEWER SYSTEM SHOWN ON THESE PLANS AND SPECIFICATIONS ARE COMPLETE AND CORRECT.

2. THE UNDERSIGNED SPECIFICALLY WARRANTS THAT THE PLANS AND SPECIFICATIONS FOR THE SEWER SYSTEM SHOWN ON THESE PLANS AND SPECIFICATIONS ARE COMPLETE AND CORRECT.

3. THE UNDERSIGNED SPECIFICALLY WARRANTS THAT THE PLANS AND SPECIFICATIONS FOR THE SEWER SYSTEM SHOWN ON THESE PLANS AND SPECIFICATIONS ARE COMPLETE AND CORRECT.

4. THE UNDERSIGNED SPECIFICALLY WARRANTS THAT THE PLANS AND SPECIFICATIONS FOR THE SEWER SYSTEM SHOWN ON THESE PLANS AND SPECIFICATIONS ARE COMPLETE AND CORRECT.

5. THE UNDERSIGNED SPECIFICALLY WARRANTS THAT THE PLANS AND SPECIFICATIONS FOR THE SEWER SYSTEM SHOWN ON THESE PLANS AND SPECIFICATIONS ARE COMPLETE AND CORRECT.

PROFILE, ALIGNMENT AND GRADE OF
SANITARY SEWERS
 TO BE CONSTRUCTED IN
TRACT NO. 45262
PRIVATE CONTRACT NO. 10983
 INDEX: C-241
 2 SHEETS, 3 PAGES

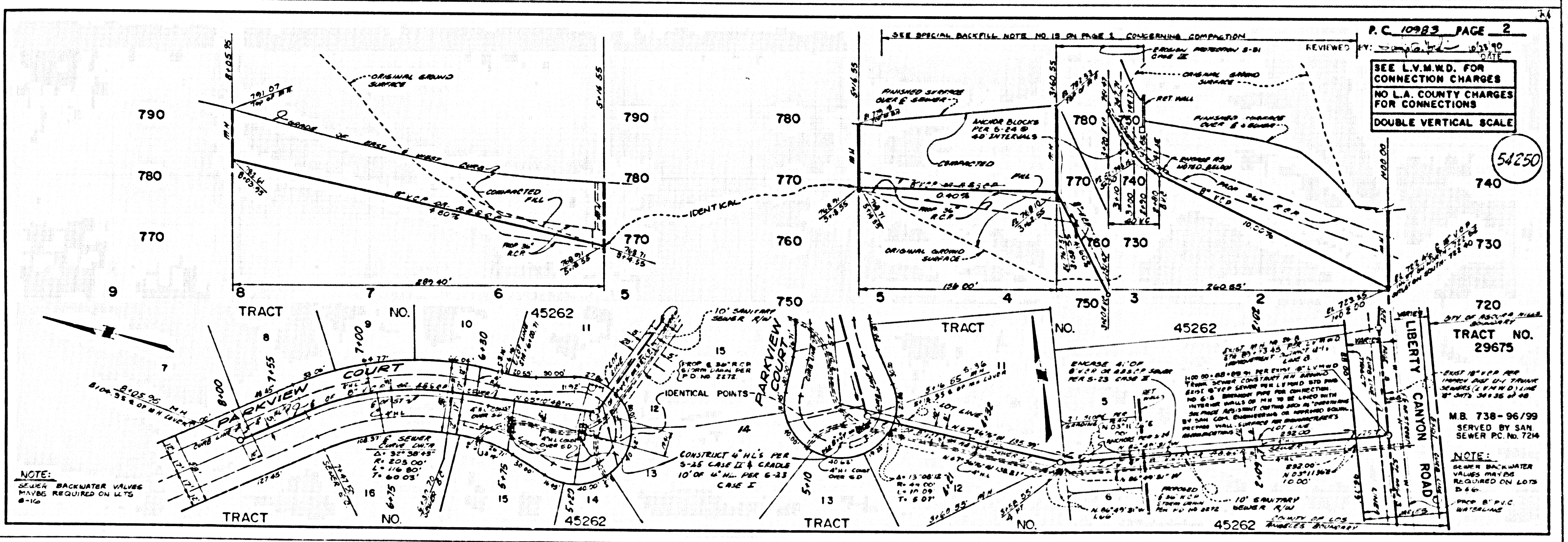
SCALE: HORIZONTAL 1" = 40' VERTICAL 1" = 10'
 FEBRUARY, 1989

PREPARED IN THE OFFICES OF
LQMA ENGINEERING SERVICES
 250 S. EAST ST. SIMI VALLEY, CA 91357
 PHONE 364-0000
 BY: *[Signature]*
 REG. C.E.N. 87245

COUNTY OF LOS ANGELES, CALIFORNIA
 THOMAS A. TIDEMANSON
 DIRECTOR OF PUBLIC WORKS
 LAS VIRGENES MUNICIPAL WATER DISTRICT

APPROVED: *[Signature]* 1/29/89
 CHECKED: *[Signature]* 1/29/89
 REG. NO. 16116
 CALABASAS, BLDG. DIST. 81

1. 12" DIA. 10' DEPTH	1.00
2. 12" DIA. 10' DEPTH	1.00
3. 12" DIA. 10' DEPTH	1.00
4. 12" DIA. 10' DEPTH	1.00
5. 12" DIA. 10' DEPTH	1.00
6. 12" DIA. 10' DEPTH	1.00
7. 12" DIA. 10' DEPTH	1.00
8. 12" DIA. 10' DEPTH	1.00
9. 12" DIA. 10' DEPTH	1.00
10. 12" DIA. 10' DEPTH	1.00
11. 12" DIA. 10' DEPTH	1.00
12. 12" DIA. 10' DEPTH	1.00
13. 12" DIA. 10' DEPTH	1.00
14. 12" DIA. 10' DEPTH	1.00
15. 12" DIA. 10' DEPTH	1.00
16. 12" DIA. 10' DEPTH	1.00
17. 12" DIA. 10' DEPTH	1.00
18. 12" DIA. 10' DEPTH	1.00
19. 12" DIA. 10' DEPTH	1.00
20. 12" DIA. 10' DEPTH	1.00
21. 12" DIA. 10' DEPTH	1.00
22. 12" DIA. 10' DEPTH	1.00
23. 12" DIA. 10' DEPTH	1.00
24. 12" DIA. 10' DEPTH	1.00
25. 12" DIA. 10' DEPTH	1.00
26. 12" DIA. 10' DEPTH	1.00
27. 12" DIA. 10' DEPTH	1.00
28. 12" DIA. 10' DEPTH	1.00
29. 12" DIA. 10' DEPTH	1.00
30. 12" DIA. 10' DEPTH	1.00
31. 12" DIA. 10' DEPTH	1.00
32. 12" DIA. 10' DEPTH	1.00
33. 12" DIA. 10' DEPTH	1.00
34. 12" DIA. 10' DEPTH	1.00
35. 12" DIA. 10' DEPTH	1.00
36. 12" DIA. 10' DEPTH	1.00
37. 12" DIA. 10' DEPTH	1.00
38. 12" DIA. 10' DEPTH	1.00
39. 12" DIA. 10' DEPTH	1.00
40. 12" DIA. 10' DEPTH	1.00
41. 12" DIA. 10' DEPTH	1.00
42. 12" DIA. 10' DEPTH	1.00
43. 12" DIA. 10' DEPTH	1.00
44. 12" DIA. 10' DEPTH	1.00
45. 12" DIA. 10' DEPTH	1.00
46. 12" DIA. 10' DEPTH	1.00
47. 12" DIA. 10' DEPTH	1.00
48. 12" DIA. 10' DEPTH	1.00
49. 12" DIA. 10' DEPTH	1.00
50. 12" DIA. 10' DEPTH	1.00



18801 BC 10824 ON T/CART

