

PROFILE, ALIGNMENT AND GRADE OF
SANITARY SEWERS PAGE 1
 TO BE CONSTRUCTED IN
WALNUT DRIVE
PRIVATE CONTRACT NO. 10985
 INDEX: U-130, 4-3

1 SHEET, 2 PAGES
 SCALE: VERT. 1"=4' HORIZ. 1"=40'
 PREPARED IN THE OFFICES OF
 JOHN B. ADSELL, INC.
 140 W. ORANGE ST., COVINA, CA 91723
 BY *Charles W. Carr*
 CHECKED *Thomas A. Tiechmann*
 DATE 2/14/91

NOTE: NUMBER IN CIRCLE INDICATES PAGE NUMBER.

INDEX MAP
 SCALE: 1"=600'
 P.C. 10985
 WALNUT DRIVE SEWER EXTENSION
 T.G. PG. 98-F3

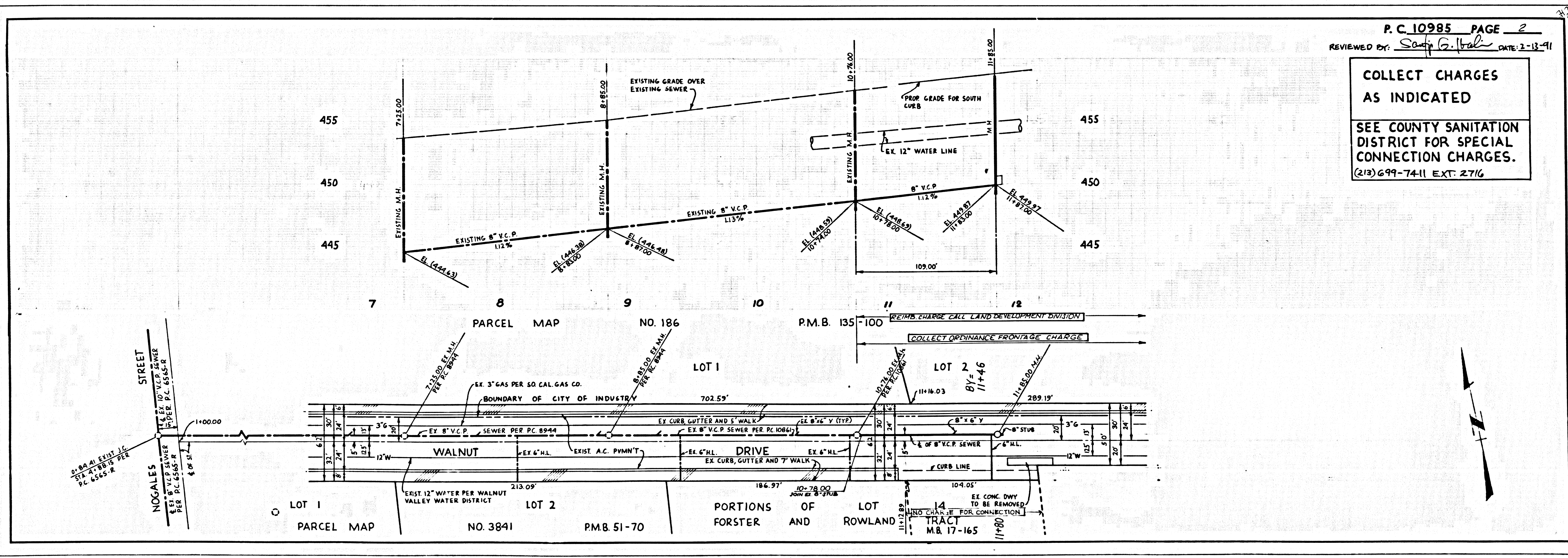
NO CONNECTION FOR THE DISPOSAL OF INDUSTRIAL WASTES SHALL BE MADE TO SEWERS SHOWN ON THESE DRAWINGS UNTIL A PERMIT FOR INDUSTRIAL WASTEWATER DISCHARGE HAS BEEN ISSUED BY THE SANITATION DISTRICTS FOR SAID CONNECTION.

BEFORE BREAKING INTO OR CONSTRUCTION ON A COUNTY SANITATION DISTRICT SEWER AND PRIOR TO FINAL ACCEPTANCE OF THE PROJECT, SANITATION DISTRICT INSPECTOR SHALL BE NOTIFIED BY PHONE (818) 962-8605 SO THAT REQUIRED INSPECTION CAN BE MADE.

THE FOLLOWING LATEST REVISED STANDARDS SHALL BE IN THE OFFICE OF THE COUNTY ENGINEER SHALL APPLY IN THE CONSTRUCTION OF THIS PROJECT.

STANDARD PUBLIC SAFETY REQUIREMENTS	5.1
BRICK MANHOLE	5.2
STANDARD MANHOLE STOP	5.17
REINFORCED CONCRETE MANHOLE	5.18
CASTING AND ENCLOSURE	5.19
WYE OR TEE SUPPORT	5.20
ALLOWABLE TRENCH WIDTHS	5.21
LOCKING MANHOLE PLATE AND COVER	5.22
MONUMENTED PRECAST CONCRETE MANHOLE	5.23

COUNTY OF LOS ANGELES, CALIFORNIA
 THOMAS A. TIECHMANN, DIRECTOR OF PUBLIC WORKS
 CHARLES W. CARR, CHIEF ENGINEER
 APPROVED *Dean E. Hoffman* 2/14/91
 CHECKED *Thomas A. Tiechmann* 2/14/91
 NO. CA. NO. 20273
 L.A. PUENTE BLDG. DIST. 2



P.C. 10985 PAGE 2
 REVIEWED BY: *Sally G. Hall* DATE: 2-12-91

COLLECT CHARGES AS INDICATED
 SEE COUNTY SANITATION DISTRICT FOR SPECIAL CONNECTION CHARGES.
 (213) 699-7411 EXT. 2716