

B.M. CG 4209 ELEV. 737.86  
 CSBM MON FL IN S WALL C & 45 FT  
 W/O C/L BREA C/W RD #05 MI S10  
 C/L VIA SORELLA MKD (47.2A 1973)  
 DTR BEIN QUAD. 19 80

**PRIVATE ENGINEER'S NOTICE TO CONTRACTORS**

THE EXISTENCE AND LOCATION OF ANY UNDERGROUND UTILITY PIPES OR STRUCTURES SHOWN ON THESE PLANS ARE SHOWN BY A SEARCH OF THE AVAILABLE RECORDS. TO THE BEST OF OUR KNOWLEDGE THERE ARE NO EXISTING UTILITIES EXCEPT AS SHOWN ON THESE PLANS. THE CONTRACTOR IS REQUIRED TO TAKE DUE PRECAUTIONARY MEASURES TO PROTECT THE UTILITY LINES SHOWN AND ANY OTHER LINES NOT OF RECORD OR NOT SHOWN ON THESE PLANS. THE CONTRACTOR SHALL BE RESPONSIBLE FOR NOTIFYING "UNDERGROUND SERVICE ALERT" AT 1-800-421-4133 TWO WORKING DAYS PRIOR TO ANY EXCAVATION OR CONSTRUCTION.

Wesley R. Lind  
 REGISTERED ENGINEER  
 R.C.E. NO. 16362  
 10/26/82

**GENERAL NOTES:**

- ELEVATIONS ARE IN FEET ABOVE U.S. & G.S. SEA LEVEL DATUM OF 1929.
- NO REVISIONS SHALL BE MADE IN THESE PLANS WITHOUT THE APPROVAL OF THE DIRECTOR OF PUBLIC WORKS.
- NO REPRESENTATIVE OF THE DEPT. OF PUBLIC WORKS WILL SURVEY OR LAY OUT ANY PORTION OF THE WORK.
- GRADES TO WHICH THIS IMPROVEMENT IS TO BE CONSTRUCTED ARE SHOWN ON PLANS AND PROFILES. GRADE POINTS FOR TOP OF CURBS, CENTERLINE OF STREETS, OR CENTERLINE OF ALLEYS ARE SHOWN BY CIRCLES ON PROFILES. AT ALL POINTS BETWEEN DESIGNATED POINTS THE GRADE SHALL BE ESTABLISHED SO AS TO CONFORM TO A STRAIGHT LINE DRAWN BETWEEN SAID DESIGNATED POINTS.
- THE PRIVATE ENGINEER SHALL FURNISH THE DEPT. OF PUBLIC WORKS WITH GRADE SHEETS AND STATIONING FOR ALL HOUSE LATERALS AND "Y" OR "T" BRANCHES AND SHALL PROVIDE STAKES FOR THEM AT THEIR PROPER LOCATIONS WITH STATIONING PLAINLY MARKED. ALL HOUSE LATERALS SHALL BE CONSTRUCTED IN A STRAIGHT ALIGNMENT AT RIGHT ANGLES FROM THE MAIN LINE SEWER EXCEPT AS SHOWN ON THE PLANS. HOUSE LATERALS FROM CHIMNEYS SHALL NOT HAVE AN ANGLE OF LESS THAN 45° WITH THE MAIN LINE SEWER. ANY CHANGE IN ALIGNMENT SHALL BE REQUESTED IN WRITING BY THE PRIVATE ENGINEER.
- THE PRIVATE ENGINEER SHALL FURNISH THE HOUSE LATERAL DEPTH AT THE PROPERTY LINE, BELOW THE TOP OF CURB ELEVATION FOR EACH HOUSE LATERAL ON THE GRADE SHEET.
- BEFORE WORK CAN BE STARTED, THE CONTRACTOR MUST OBTAIN A PERMIT TO EXCAVATE IN COUNTY STREETS FROM THE CONSTRUCTION DIV. OF THE L.A. DEPT. OF PUBLIC WORKS PERMIT OFFICE NO. 887474 TO THE DIRECTOR OF PUBLIC WORKS, 5005 W. CENTURY BLVD., SUITE 200, LOS ANGELES, CALIFORNIA 90045 TO COVER THE COST OF CONSTRUCTION INSPECTION AND RECORD PLANS.
- IF WORK IS TO BE DONE IN A STATE HIGHWAY, A PERMIT MUST BE OBTAINED FROM THE STATE OF CALIFORNIA, DIVISION OF HIGHWAYS, 120 SOUTH SPRING STREET, LOS ANGELES, CALIFORNIA.
- APPROVAL OF THIS PLAN BY THE COUNTY OF LOS ANGELES DOES NOT CONSTITUTE A REPRESENTATION AS TO THE ACCURACY OF THE LOCATION OF OR THE EXISTENCE OR NON-EXISTENCE OF ANY UNDERGROUND UTILITY PIPE, OR STRUCTURE WITHIN THE LIMITS OF THIS PROJECT. THIS NOTE APPLIES TO ALL PAGES.
- REFER TO SECTION 7.10.4.1 OF THE STANDARD SPECIFICATIONS, REGARDING SAFETY ORDERS.
- PRIOR TO THE ISSUANCE OF THE REQUIRED SEWER CONSTRUCTION PERMIT, THE CONTRACTOR SHALL OBTAIN AND FILE WITH THE DEPT. OF PUBLIC WORKS COPIES OF A PERMIT TO EXCAVATE IN COUNTY STREETS FROM THE CONSTRUCTION DIV. OF THE DEPT. OF PUBLIC WORKS PERMIT OFFICE NO. 8 FOR EXCAVATION AND TRENCHES FROM THE STATE OF CALIFORNIA, DIVISION OF INDUSTRIAL SAFETY AND A CERTIFICATE OF WORKERS COMPENSATION INSURANCE WITH THE DEPARTMENT OF PUBLIC WORKS 800 S. GARDEN ST., LOS ANGELES, CALIFORNIA 90012 NAMED AS THE CERTIFICATE HOLDER TO BE NOTIFIED 30 DAYS PRIOR TO CANCELLATION OF POLICY.

**DOUBLE SCALE**

**SANITARY SEWERS**

TO BE CONSTRUCTED IN  
**LARKSTONE DRIVE  
 (PRIVATE DRWY)**

**PRIVATE CONTRACT NO. 11012  
 INDEX U-142**

1 SHEET OF 2 PAGES

SCALE: VERT. 1" = 8'  
 HORIZ. 1" = 40'

JULIE 1989

PREPARED IN THE OFFICES OF

W. R. LIND  
 44 S. CHESTNUT AVE  
 PASADENA, CA 91104  
 PH: 798-5141  
 BY: W. R. LIND  
 WESLEY R. LIND REG. C.E. 16362

THE FOLLOWING LATEST REVISED STANDARD PLANS ON FILE IN THE OFFICE OF THE DEPARTMENT OF PUBLIC WORKS SHALL APPLY IN THE CONSTRUCTION OF THIS PROJECT:

LEGEND	S-1
MINIMUM PUBLIC SAFETY REQUIREMENTS	S-2
BRICK MANHOLE	S-3
STANDARD MANHOLE STEP	S-17
BEDDING FOR SEWER PIPE	S-21
CRADLING AND ENCASMENT	S-23
WYE OR TEE SUPPORT	S-26
ALLOWABLE TRENCH WIDTHS	S-33
LOCKING MANHOLE FRAME AND COVER	S-35
NON-REINFORCED PRECAST CONCRETE MANHOLE	S-38

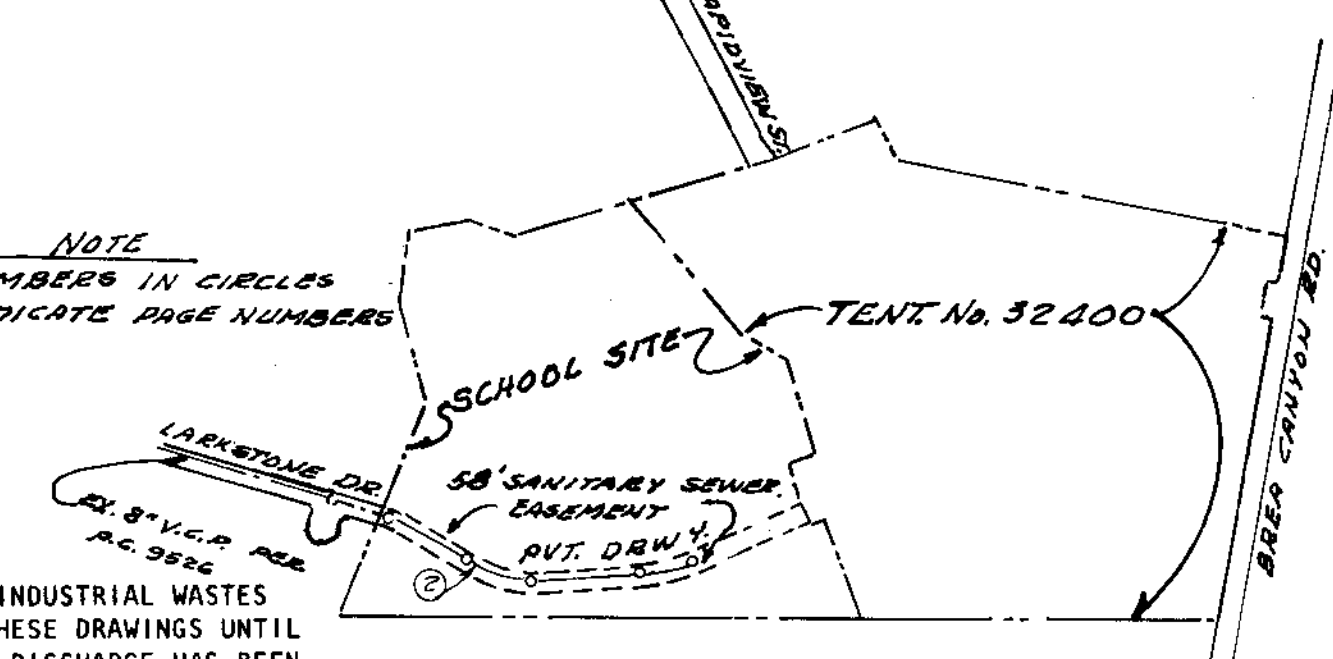
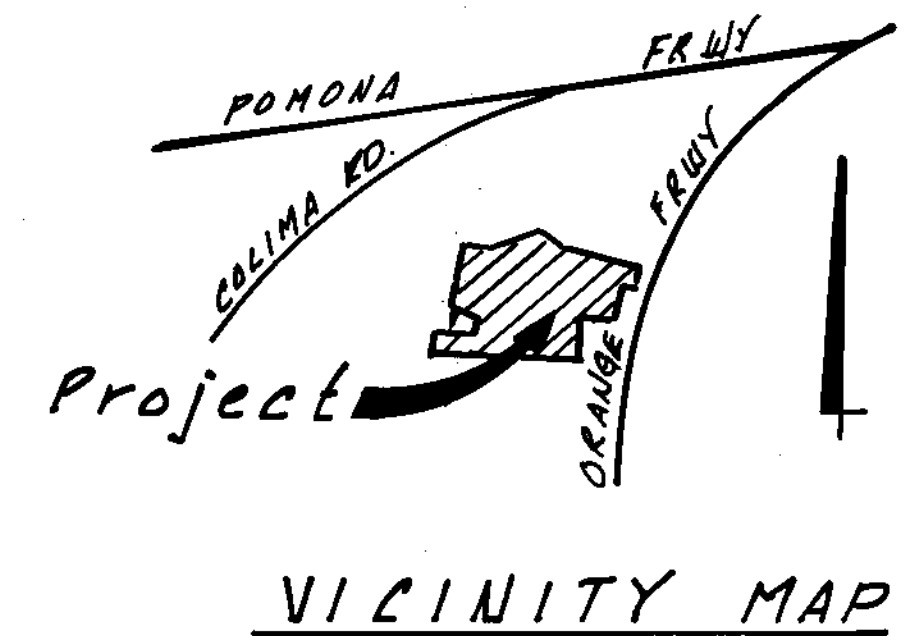


COUNTY OF LOS ANGELES, CALIFORNIA  
 THOMAS A. TIDEMANSON, DIRECTOR  
 DEPARTMENT OF PUBLIC WORKS  
 APPROVED: [Signature] 9/3/89 (DATE)  
 CHECKED: [Signature] 8/31/89 (DATE)  
 REG. C.E. NO. 18116  
 LA PUENTE BLDG. DIST. 2.0

CHARLES W. CARRY, CHIEF ENGINEER  
 CO. SAN DIST. NO. 21  
 APPROVED: [Signature] (DATE)  
 DATE: 9/7/89

**CONSTRUCTION NOTES CON'T.**

- FULL COMPLIANCE WITH PART IV OF THE SPECIAL PROVISIONS IS REQUIRED FOR THE INSTALLATION OF A.B.S. COMPOSITE PIPE.
- MANHOLE WATER-TIGHT GASKETS AND CLAMPS ARE REQUIRED FOR THE CONNECTION OF A.B.S. COMPOSITE PIPE TO MANHOLE STRUCTURES.
- A.B.S. SOLID WALL PIPE MUST BE USED FOR WYE AND HOUSE LATERAL CONNECTIONS TO A.B.S. COMPOSITE MAINLINE SEWER PIPE.
- A.B.S. COMPOSITE PIPE SHALL BE BENDED IN CONFORMANCE WITH THE TABLE IN SECTION 3.1 OF PART IV OF THE SPECIAL PROVISIONS.
- THREE DEGREE DEFLECTION COUPLERS ARE REQUIRED FOR RADIUS OF CURVATURE LESS THAN 380 FEET WHEN USING 8" A.B.S. COMPOSITE PIPE.
- NO CONNECTIONS FOR DISPOSAL OF INDUSTRIAL WASTES ARE ALLOWED IF A.B.S. COMPOSITE PIPE IS USED.
- SEWER LINE CURVATURE SHALL NOT BE ACCOMPLISHED BY PULLING OF JOINTS OR BEVELING PIPE ENDS WHEN USING PLASTIC PIPE INCLUDING A.B.S. COMPOSITE PIPE.
- ALL WYES AND/OR HOUSE LATERALS ARE TO BE LOCATED AT LEAST FIVE FEET APART AND WHEN POSSIBLE NOT CLOSER THAN FIVE FEET TO ANY MANHOLE.
- A.B.S. SOLID WALL PIPE IS NOT ACCEPTABLE FOR USE AS MAINLINE SEWER.
- ONLY WYE BRANCHES ARE TO BE USED FOR CONNECTION TO A.B.S. COMPOSITE MAINLINE SEWER PIPE.

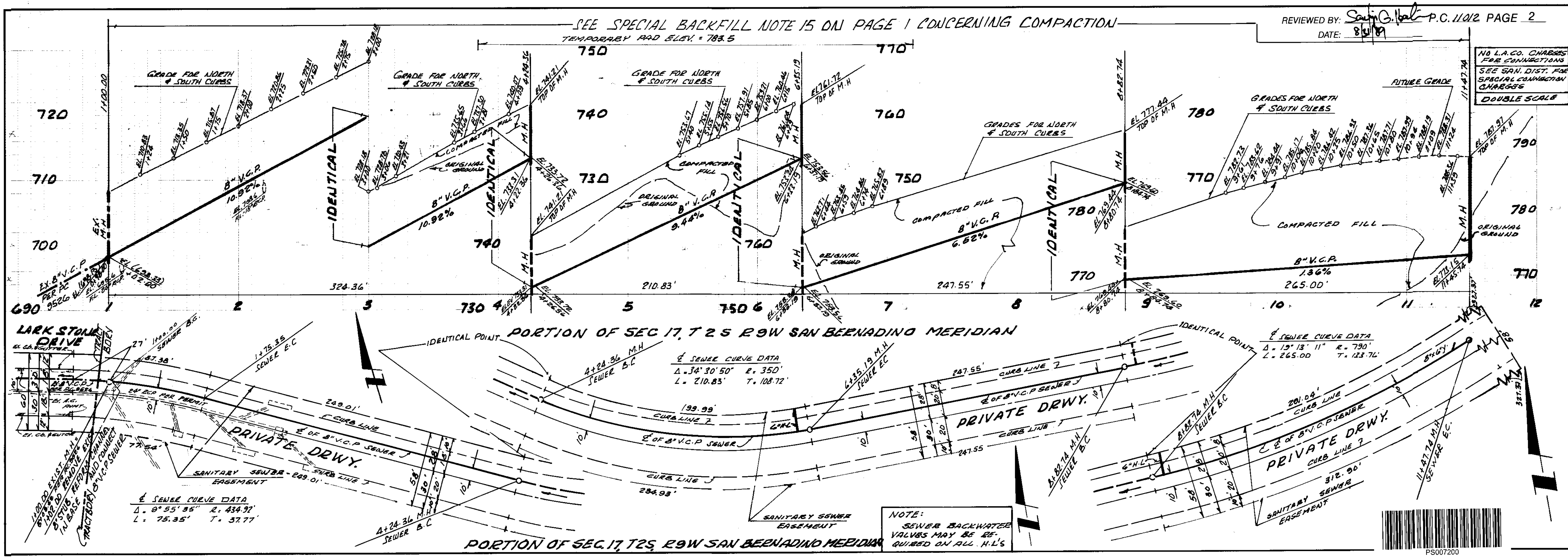


**NOTE:**  
 ISSUE AND H.L. PERMITS UNTIL SAN. SEWER EASEMENT IS RECORDED (CHECK WITH Land Development Division)

NO CONNECTION FOR THE DISPOSAL OF INDUSTRIAL WASTES SHALL BE MADE TO SEWERS SHOWN ON THESE DRAWINGS UNTIL A PERMIT FOR INDUSTRIAL WASTEWATER DISCHARGE HAS BEEN ISSUED BY THE SANITATION DISTRICTS FOR SAID CONNECTION.

NO CONNECTION FOR THE DISPOSAL OF INDUSTRIAL WASTES SHALL BE MADE TO SEWERS SHOWN ON THESE DRAWINGS UNTIL A PERMIT FOR INDUSTRIAL WASTEWATER DISCHARGE HAS BEEN ISSUED BY THE SANITATION DISTRICTS FOR SAID CONNECTION.

**INDEX MAP  
 R.C. 11012  
 LARKSTONE DRIVE  
 (PRIVATE DRWY)  
 SCALE: 1" = 600'  
 T.S. 97, C-3**



REVIEWED BY: [Signature] P.C. 11012 PAGE 2  
 DATE: 8/1/89

NO L.A. CO. CHARGES FOR EASEMENT STAKES  
 SEE SAN. DIST. FOR SPECIAL CONNECTION CHARGES  
**DOUBLE SCALE**

SEWER CURVE DATA  
 $\Delta = 0^\circ 55' 55''$  R. 434.97'  
 L. 75.35' T. 37.77'

SEWER CURVE DATA  
 $\Delta = 34^\circ 30' 50''$  R. 350'  
 L. 210.83' T. 108.72'

SEWER CURVE DATA  
 $\Delta = 12^\circ 13' 11''$  R. 790'  
 L. 265.00' T. 123.74'

**NOTE:**  
 SEWER BACKWATER VALVES MAY BE REQUIRED ON ALL H.L.'S



ON TYPART

11011 BC  
 11900 210725941  
 (X)W6161969

B.M. CS 4209 ELEV. 737.84  
 CSBM MON FL IN S WALL C & 45 FT  
 W/O C/L BREA CYU RD #05MI S/O  
 C/L VIA SORELLA MKD (7-24-1973)  
 DITZBEIN QUAD. 19 20

**PRIVATE ENGINEER'S NOTICE TO CONTRACTORS**

THE EXISTENCE AND LOCATION OF ANY UNDERGROUND UTILITY PIPES OR STRUCTURES SHOWN ON THESE PLANS ARE OBTAINED BY A SEARCH OF THE AVAILABLE RECORDS. TO THE BEST OF OUR KNOWLEDGE THERE ARE NO EXISTING UTILITIES EXCEPT AS SHOWN ON THESE PLANS. THE CONTRACTOR IS REQUIRED TO TAKE DUE PRECAUTIONARY MEASURES TO PROTECT THE UTILITY LINES SHOWN AND ANY OTHER LINES NOT OF RECORD OR NOT SHOWN ON THESE PLANS. THE CONTRACTOR SHALL BE RESPONSIBLE FOR NOTIFYING "UNDERGROUND SERVICE ALERT" AT 1-800-422-4133 TWO WORKING DAYS PRIOR TO ANY EXCAVATION OR CONSTRUCTION.

*Wesley R. Lind*  
 REGISTERED ENGINEER R.C.E. NO. 10362

**GENERAL NOTES:**

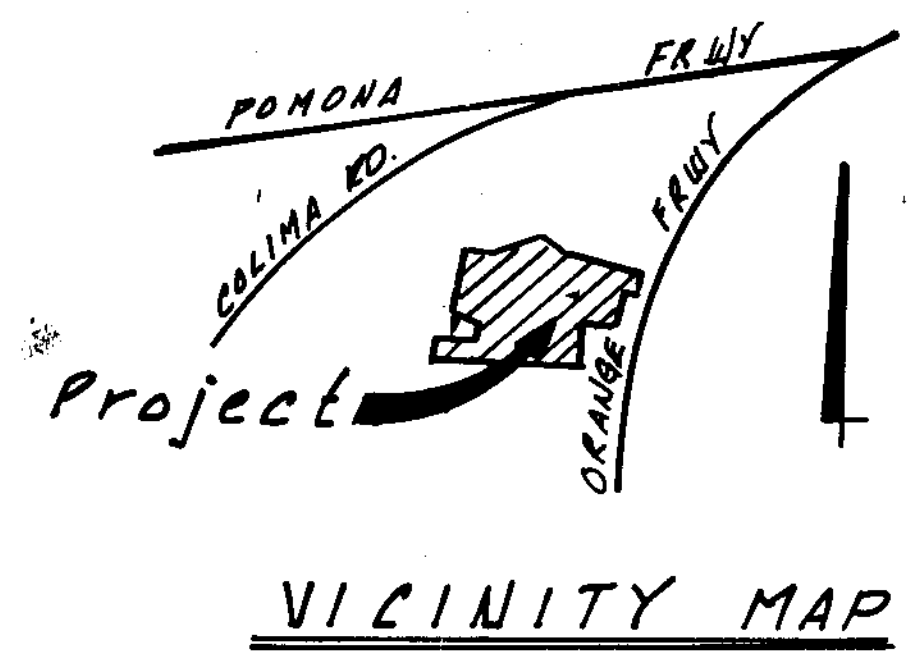
- ELEVATIONS ARE IN FEET ABOVE U.S. & G.S. SEA LEVEL DATUM OF 1929
- NO REVISIONS SHALL BE MADE IN THESE PLANS WITHOUT THE APPROVAL OF THE DIRECTOR OF PUBLIC WORKS.
- NO REPRESENTATIVE OF THE DEPT. OF PUBLIC WORKS WILL SURVEY OR LAY OUT ANY PORTION OF THE WORK.
- GRADES TO WHICH THIS IMPROVEMENT IS TO BE CONSTRUCTED ARE SHOWN ON PLANS AND PROFILES. GRADE POINTS FOR TOP OF CURBS, CENTERLINE OF STREETS, OR CENTERLINE OF ALLEYS ARE SHOWN BY CIRCLES ON PROFILES AT ALL POINTS BETWEEN DESIGNATED POINTS. THE GRADE SHALL BE ESTABLISHED SO AS TO CONFORM TO A STRAIGHT LINE DRAWN BETWEEN SAID DESIGNATED POINTS.
- THE PRIVATE ENGINEER SHALL FURNISH THE DEPT. OF PUBLIC WORKS WITH GRADE SHEETS AND STATIONING FOR ALL HOUSE LATERALS AND "Y" OR "T" BRANCHES AND SHALL PROVIDE STAKES FOR THEM AT THEIR PROPER LOCATIONS WITH STATIONING PLANS MARKED. ALL HOUSE LATERALS SHALL BE CONSTRUCTED IN A STRAIGHT ALIGNMENT AT RIGHT ANGLES FROM THE MAIN LINE SEWER EXCEPT AS SHOWN ON THE PLANS. HOUSE LATERALS FROM CHIMNEYS SHALL NOT HAVE AN ANGLE OF LESS THAN 45° WITH THE MAIN LINE SEWER. ANY CHANGE IN ALIGNMENT SHALL BE REQUESTED IN WRITING BY THE PRIVATE ENGINEER.
- THE PRIVATE ENGINEER SHALL FURNISH THE HOUSE LATERAL DEPTH AT THE PROPERTY LINE, BELOW THE TOP OF CURB ELEVATION FOR EACH HOUSE LATERAL ON THE GRADE SHEET.
- BEFORE WORK CAN BE STARTED, THE CONTRACTOR MUST OBTAIN A PERMIT TO EXCAVATE IN COUNTY STREETS FROM THE CONSTRUCTION DIV. OF THE L.A. DEPT. OF PUBLIC WORKS PERMIT OFFICE NO. 6 & PAY A FEE TO THE DIRECTOR OF PUBLIC WORKS, 800 S. FIDELITY AVE., ALHAMBRA, CA. 91803 TO COVER THE COST OF CONSTRUCTION INSPECTION AND RECORD PLANS.
- IF WORK IS TO BE DONE IN A STATE HIGHWAY, A PERMIT MUST BE OBTAINED FROM THE STATE OF CALIFORNIA, DIVISION OF HIGHWAYS, 120 SOUTH SPRING STREET, LOS ANGELES, CALIFORNIA.
- APPROVAL OF THIS PLAN BY THE COUNTY OF LOS ANGELES DOES NOT CONSTITUTE A REPRESENTATION AS TO THE ACCURACY OF THE LOCATION OF OR THE EXISTENCE OR NON-EXISTENCE OF ANY UNDERGROUND UTILITY PIPE, OR STRUCTURE WITHIN THE LIMITS OF THIS PROJECT. THIS NOTE APPLIES TO ALL PAGES.
- REFER TO SECTION 7.10.4.1 OF THE STANDARD SPECIFICATIONS, REGARDING SAFETY ORDERS.
- PRIOR TO THE ISSUANCE OF THE REQUIRED SEWER CONSTRUCTION PERMIT, THE CONTRACTOR SHALL OBTAIN AND FILE WITH THE DEPT. OF PUBLIC WORKS COPIES OF A PERMIT TO EXCAVATE IN COUNTY STREETS FROM THE CONSTRUCTION DIV. OF THE DEPT. OF PUBLIC WORKS PERMIT OFFICE NO. 6 FOR EXCAVATION AND TRENCHES FROM THE STATE OF CALIFORNIA, DIVISION OF INDUSTRIAL SAFETY AND A CERTIFICATE OF WORKER'S COMPENSATION INSURANCE WITH THE DEPARTMENT OF PUBLIC WORKS, 800 S. FIDELITY AVE., ALHAMBRA, CA. 91803 NAMED AS THE CERTIFICATE HOLDER TO BE NOTIFIED 30 DAYS PRIOR TO CANCELLATION OF POLICY.

**DOUBLE SCALE**

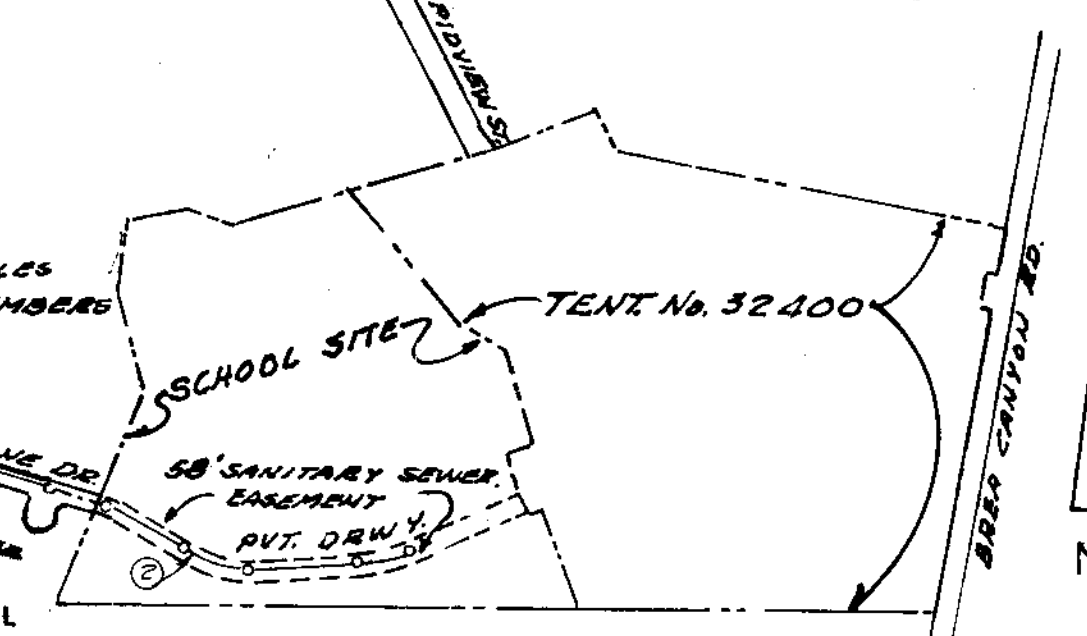
SCALE: VERT. 1" = 8'  
 HORIZ. 1" = 40'  
 DATE: JULY 1989  
 PREPARED IN THE OFFICES OF  
**W. R. LIND**  
 44 S. CHESTEE AVE  
 BREA, CALIF. 92606  
 BY: *Wesley R. Lind* REG. C.E. 10362

**CONSTRUCTION NOTES CON'T.**

- FULL COMPLIANCE WITH PART IV OF THE SPECIAL PROVISIONS IS REQUIRED FOR THE INSTALLATION OF A B.S. COMPOSITE PIPE STRUCTURES.
- MANHOLE WATER STOP GASKETS AND CLAMPS ARE REQUIRED FOR THE CONNECTION OF A B.S. COMPOSITE PIPE TO MANHOLE STRUCTURES.
- A B.S. SOLID WALL PIPE MUST BE USED FOR WYE AND HOUSE LATERAL CONNECTIONS TO A B.S. COMPOSITE MAINLINE SEWER PIPE.
- A B.S. COMPOSITE PIPE SHALL BE BLENDED IN CONFORMANCE WITH THE TABLE IN SECTION B-3.1 OF PART IV OF THE SPECIAL PROVISIONS.
- THREE DEGREE DEFLECTION COUPLERS ARE REQUIRED FOR MAINLINE CURVATURE LESS THAN 380 FEET WHEN USING 8" B.S. COMPOSITE PIPE.
- NO CONNECTIONS FOR DISPOSAL OF INDUSTRIAL WASTEWATER IS ALLOWED IF A B.S. COMPOSITE PIPE IS USED.
- SEWER LINE CURVATURE SHALL NOT BE ACHIEVED BY PULLING OF JOINTS OR BEVELING PIPE ENDS WHEN USING PLASTIC PIPE INCLUDING A B.S. COMPOSITE PIPE.
- ALL WYES AND/OR HOUSE LATERALS ARE TO BE LOCATED AT LEAST FIVE FEET APART AND WHEN POSSIBLE NOT CLOSER THAN FIVE FEET TO ANY MANHOLE.
- A B.S. SOLID WALL PIPE IS NOT ACCEPTABLE FOR USE AS MAINLINE SEWER.
- ONLY WYE BRANCHES ARE TO BE USED FOR CONNECTION TO A B.S. COMPOSITE MAINLINE SEWER PIPE.



NOTE  
 NUMBERS IN CIRCLES  
 INDICATE PAGE NUMBERS



**NOTE:**

ISSUE NO H.L. PERMITS UNTIL SAN. SEWER AGREEMENT IS RECORDED (CHECK WITH LAND DEVELOPMENT DIVISION)

NO CONNECTION FOR THE DISPOSAL OF INDUSTRIAL WASTEWATER SHALL BE MADE TO SEWERS SHOWN ON THESE DRAWINGS UNTIL A PERMIT FOR INDUSTRIAL WASTEWATER DISCHARGE HAS BEEN ISSUED BY THE SANITATION DISTRICTS FOR SAID CONNECTION.

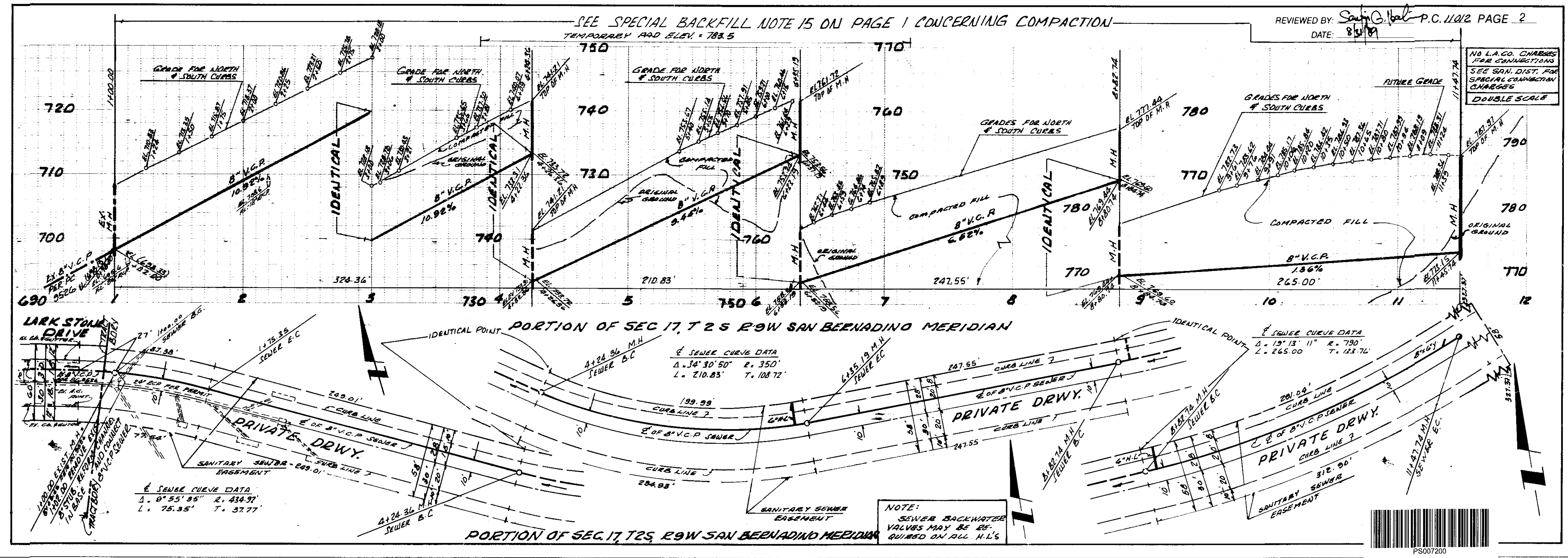
BEFORE BREAKING INTO OR CONSTRUCTION ON A COUNTY SANITATION DISTRICT SEWER AND PRIOR TO FINAL ACCEPTANCE OF THE PROJECT, SANITATION DISTRICT INSPECTOR SHALL BE NOTIFIED BY PHONE (818) 962-8605 SO THAT REQUIRED INSPECTION CAN BE MADE.

THE FOLLOWING LATEST REVISED STANDARD PLANS ON FILE IN THE OFFICE OF THE DEPARTMENT OF PUBLIC WORKS SHALL APPLY IN THE CONSTRUCTION OF THIS PROJECT:

LEGEND	S-1
MINIMUM PUBLIC SAFETY REQUIREMENTS	S-2
BRICK MANHOLE	S-3
STANDARD MANHOLE STEP	S-17
BEDDING FOR SEWER PIPE	S-21
CRADLING AND ENCASEMENT	S-23
WYE OR TEE SUPPORT	S-26
ALLOWABLE TRENCH WIDTHS	S-33
LOCKING MANHOLE FRAME AND COVER	S-35
NON REINFORCED PRECAST CONCRETE MANHOLE	S-36



COUNTY OF LOS ANGELES, CALIFORNIA  
 THOMAS A. TIDEMANSON, DIRECTOR DEPARTMENT OF PUBLIC WORKS  
 CHARLES W. CARRY, CHIEF ENGINEER CO. SAN. DIST. NO. 21  
 APPROVED: *Tom Tideman* 9/1/89 DATE: 9/1/89  
 CHECKED: *James Olin* 8/31/89 DATE: 8/31/89  
 REG. C.E. NO. 18116  
 LA PUENTE BLDG. DIST. 2.0



11011 09  
 BC  
 1989 05 20 22 28 34 37  
 01  
 PART