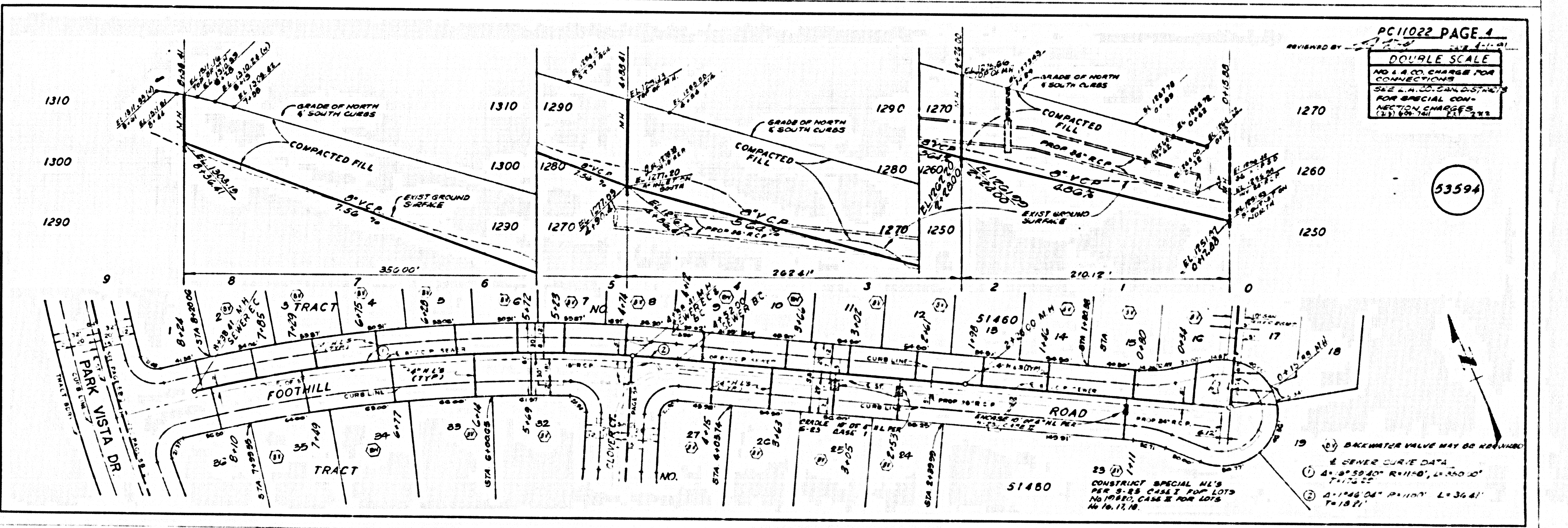
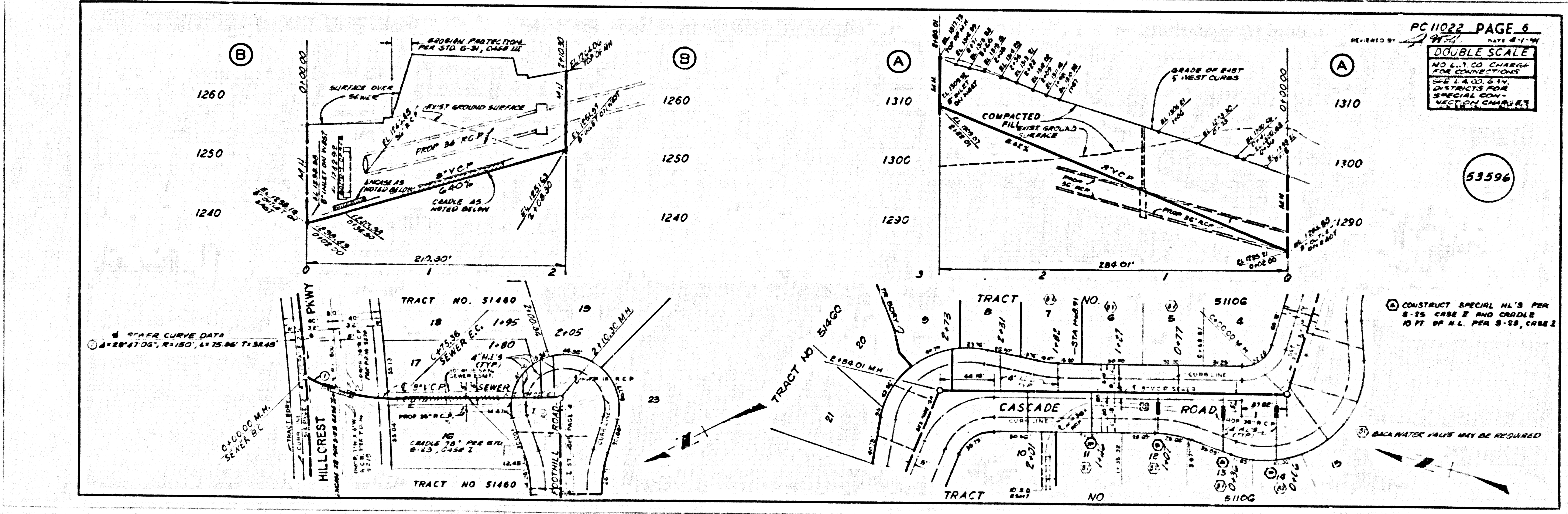
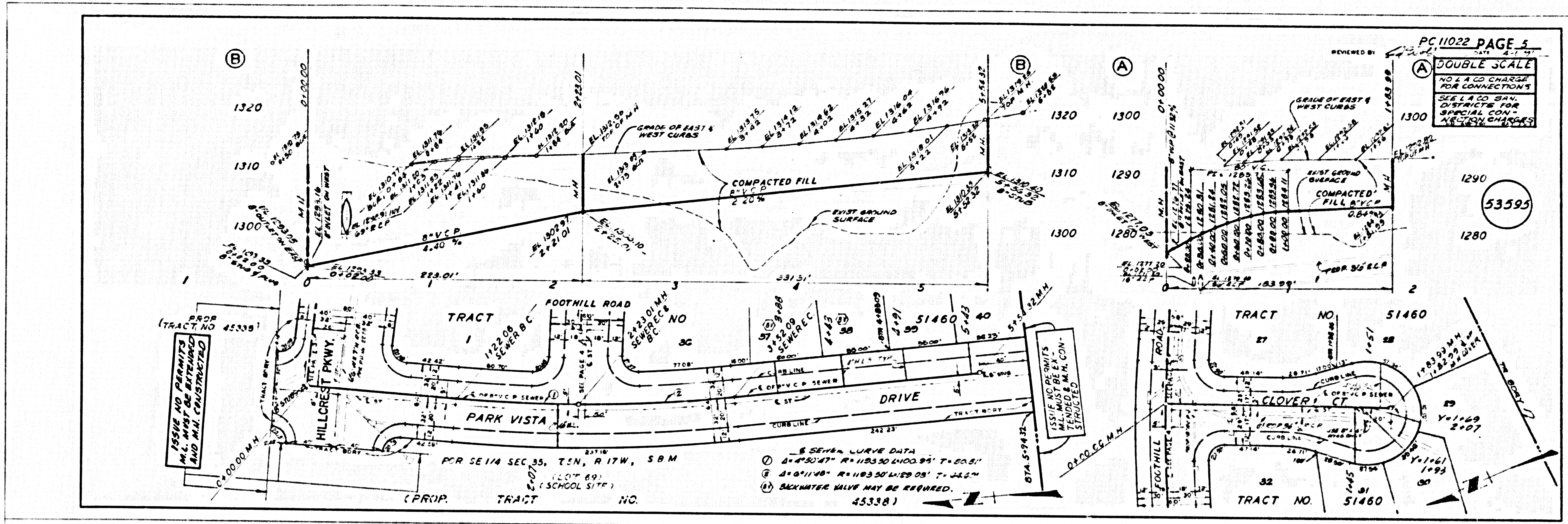


53593

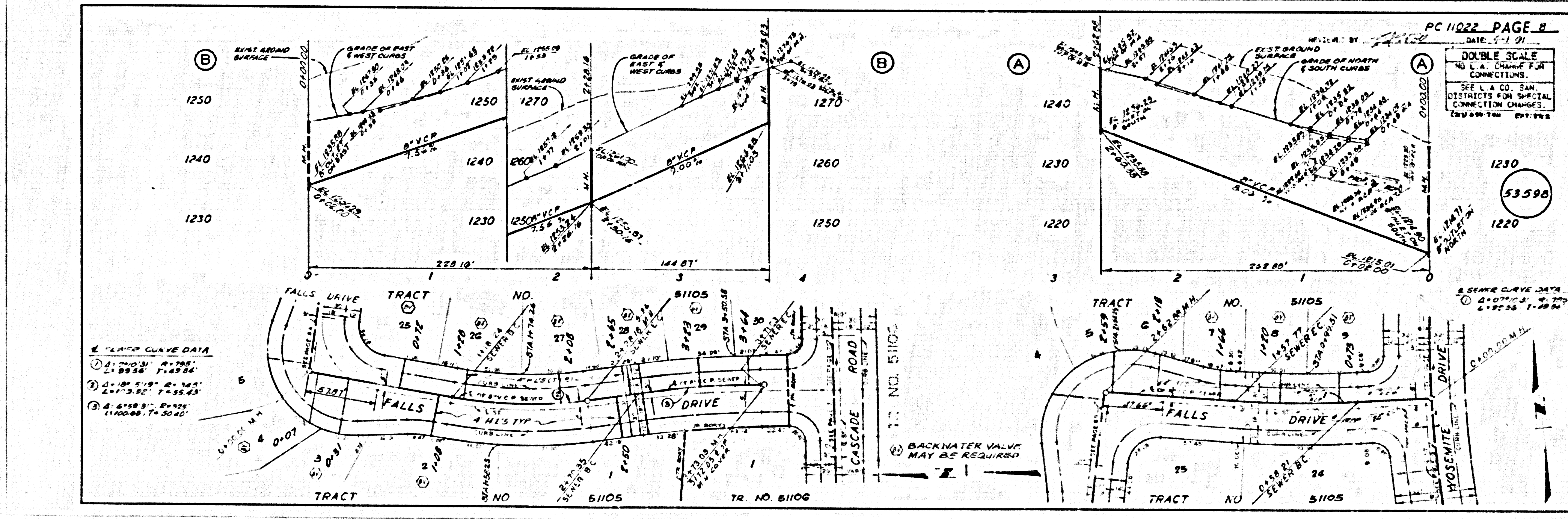
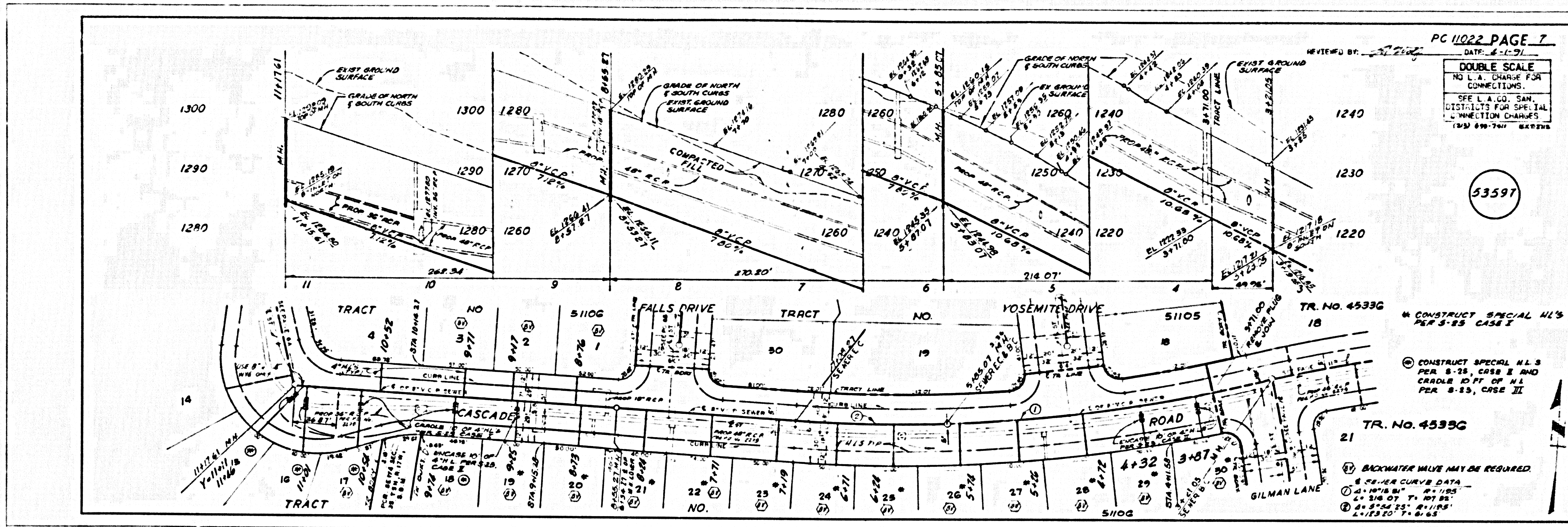
53594

SSO1109 20112, 20112, 04812 20M TRAPT

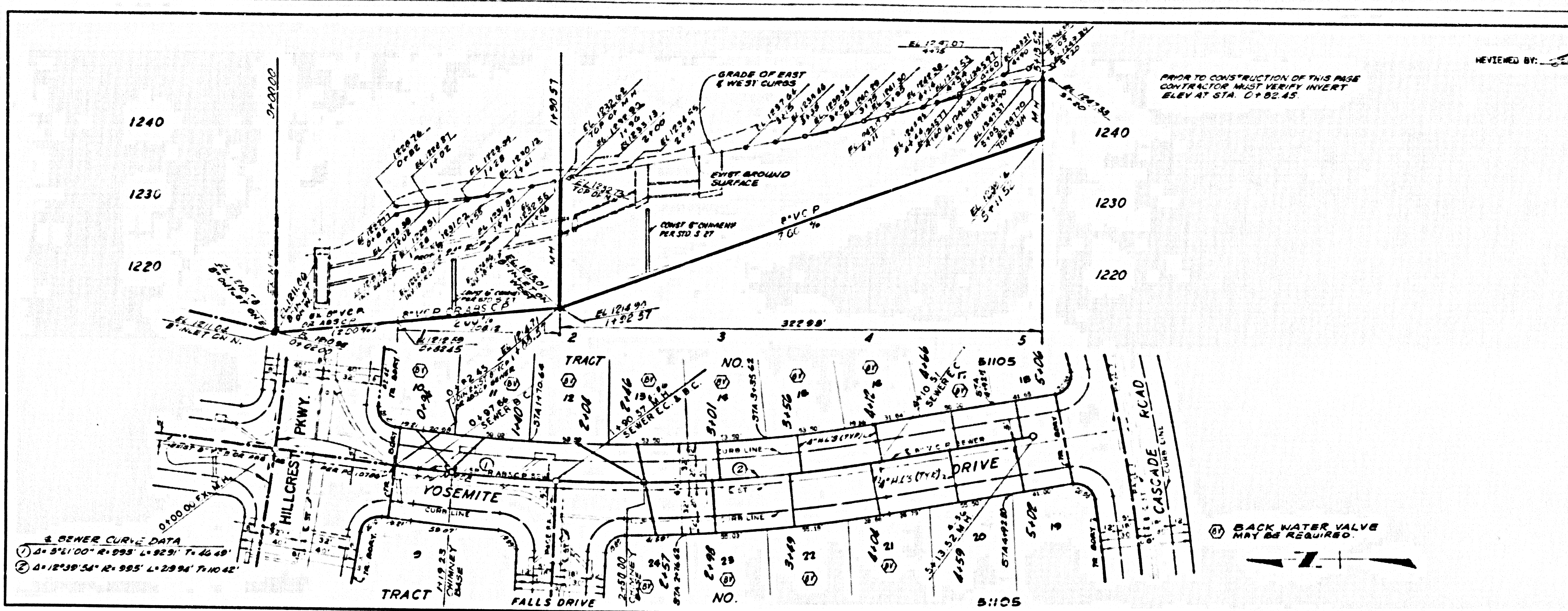




SS011 29 20112 .0012 .20M T0ART



4  
SS011 09 20112, 03412, 20M T3ART



GENERAL CURVE DATA  
 ①  $\Delta = 54^{\circ}10'00''$ ,  $R = 995'$ ,  $L = 923'$ ,  $T = 46.49'$   
 ②  $\Delta = 12^{\circ}39'54''$ ,  $R = 995'$ ,  $L = 239'$ ,  $T = 10.42'$

PRIOR TO CONSTRUCTION OF THIS PAGE  
 CONTRACTOR MUST VERIFY INVERT  
 ELEV AT STA. 0+92.45

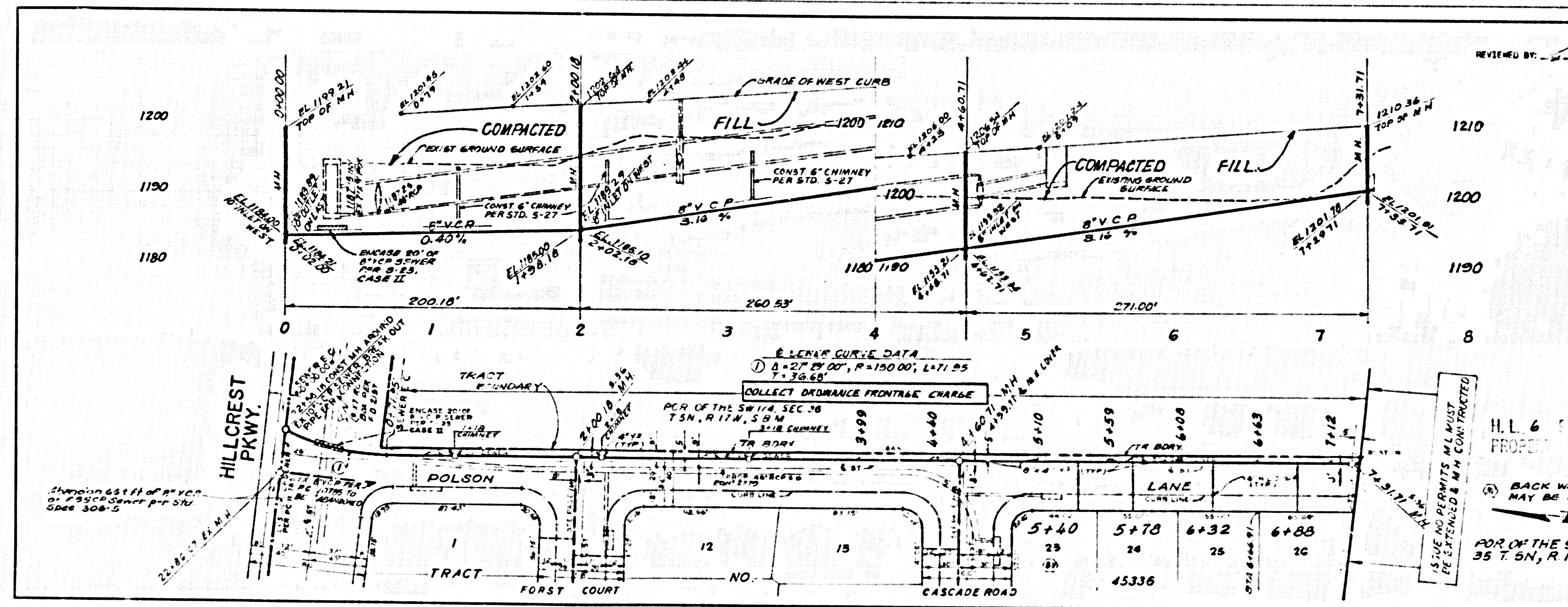
PC 11022 PAGE 9  
 DATE: 4-1-91  
 REVIEWED BY: *[Signature]*

DOUBLE SCALE  
 NO L.A. CHARGE FOR  
 CONNECTIONS.  
 SEE L.A. CO. SAN.  
 DISTRICTS FOR SPECIAL  
 CONNECTION CHARGES.  
 (20) 699-744 EXT. 273

53599

BACK WATER VALVE  
 MAY BE REQUIRED.

2 S5011 09 2011.02224 .2011 TCART



Change 651 ft of P.V.C. at 7+50.00 per STA 5 per 300'-0"

GENERAL CURVE DATA  
 ①  $\Delta = 27^{\circ}00'00''$ ,  $R = 150.00'$ ,  $L = 71.95'$ ,  $T = 36.68'$

PC 11022 PAGE 10  
 DATE: 4-1-91  
 REVIEWED BY: *[Signature]*

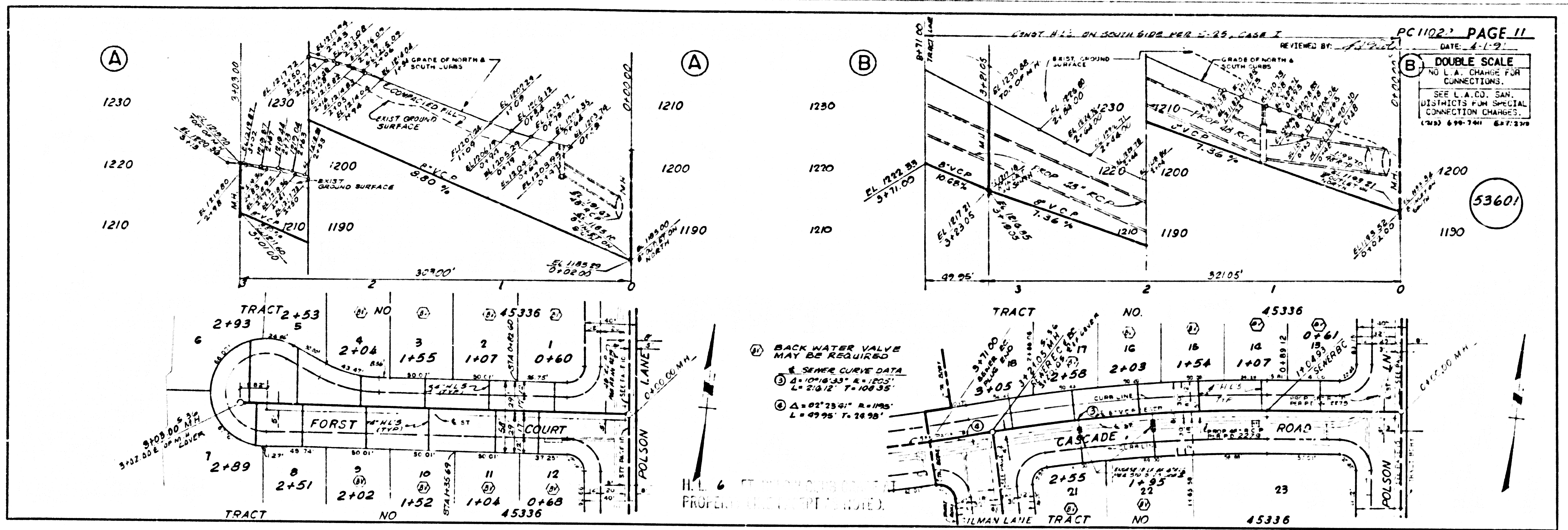
DOUBLE SCALE  
 COLLECT CHARGES  
 AS INDICATED  
 SEE L.A. CO. SAN.  
 DISTRICTS FOR SPECIAL  
 CONNECTION CHARGES.  
 (20) 699-744 EXT. 273

53600

H.L. 6 OF THE SE 1/4, SEC 35 T. 5N, R. 17W, S. 5M. PROPERTY NOT SHOWN.

BACK WATER VALVE  
 MAY BE REQUIRED.

FOR THE SE 1/4, SEC 35 T. 5N, R. 17W, S. 5M.



53601  
53011 29 50112 03112 03112 20M TRACT

