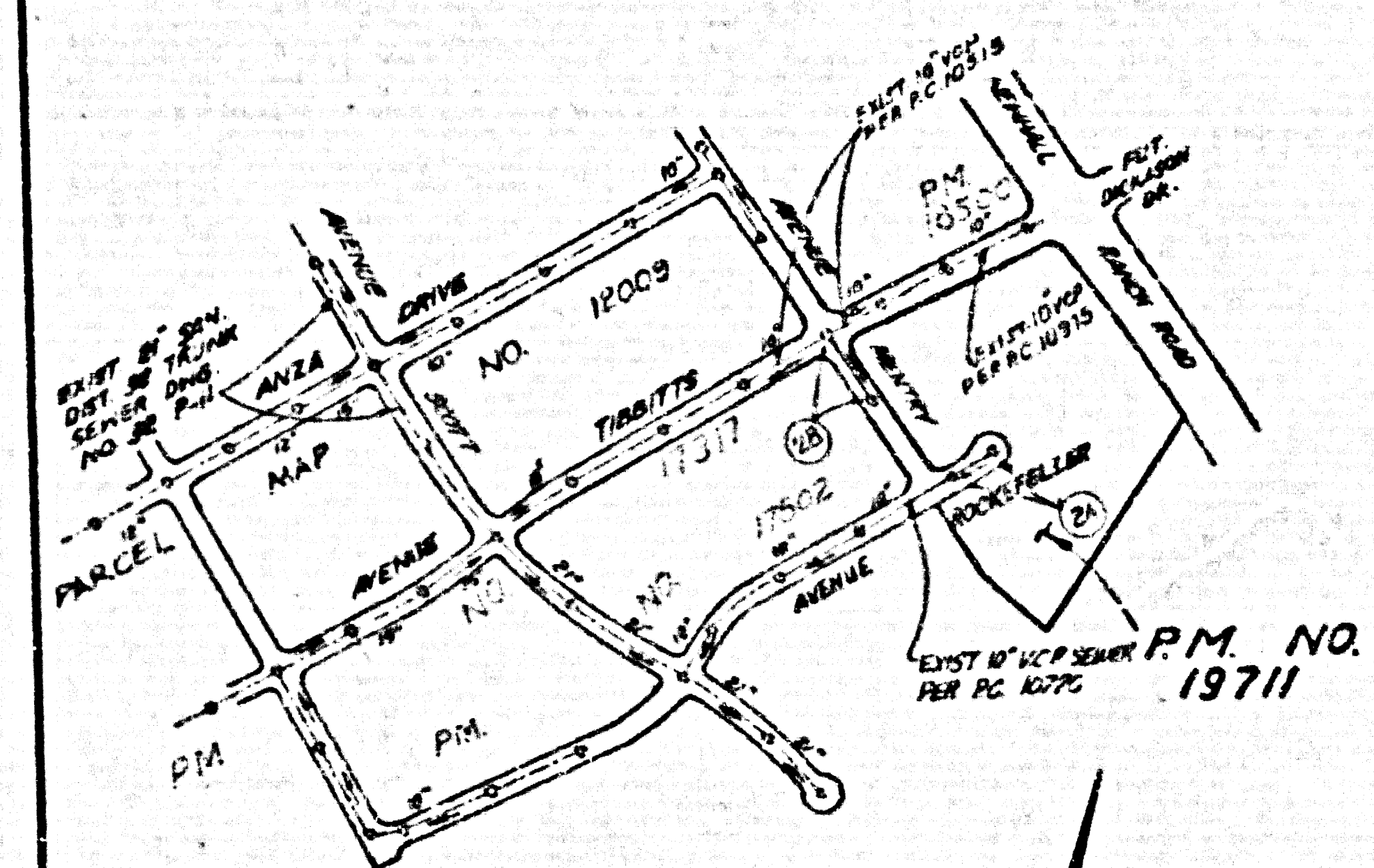


B.M. C.L. 1947 ELEV. 1157.22
 ROBIN TAG CTR. S. END MEDIAN CB. OF
 THE OLD ROAD @ N SIDE RYE CANYON
 RD.
 MCHALL QUAD. 1963

DOUBLE SCALE



INDEX MAP
 SCALE: 1" = 40'
 P.C. NO. 1025
 P.M. NO. 1971
 THOMAS GUIZB 123-37

NOTE: NUMBER IN CIRCLE INDICATES PAGE NUMBER.

NO CONNECTION FOR THE DISPOSAL OF INDUSTRIAL WASTES SHALL BE MADE TO SEWERS SHOWN ON THESE DRAWINGS UNTIL A PERMIT FOR INDUSTRIAL WASTEWATER DISCHARGE HAS BEEN ISSUED BY THE SANITATION DISTRICTS FOR SAID CONNECTION.

BEFORE BREAKING INTO OR CONSTRUCTION ON A COUNTY SANITATION DISTRICT SEWER AND PRIOR TO FINAL ACCEPTANCE OF THE PROJECT, SANITATION DISTRICT INSPECTOR SHALL BE NOTIFIED BY PHONE (818) 362-8605 SO THAT REQUIRED INSPECTION CAN BE MADE.

FOR PAGE 2 B
 ISSUE NO HOUSE LATERAL CONNECTION PERMITS UNTIL OUTLET SEWER P.C. 1095 IS ACCEPTED FOR PUBLIC USE BY THE COUNTY OF LOS ANGELES.

NOTE:
 1. LOTS 7 & 8 ARE SERVED BY P.C. 10975.
 2. LOTS 5 & 6 ARE SERVED BY P.C. 10515

- GENERAL NOTES:**
1. SEWERS ARE IN FEET UNLESS OTHERWISE SPECIFIED.
 2. NO REVISIONS SHALL BE MADE IN THESE PLANS WITHOUT THE APPROVAL OF THE DIRECTOR OF PUBLIC WORKS.
 3. THE REPRESENTATIVE OF THE DEPARTMENT OF PUBLIC WORKS SHALL SUPPLY OR LAY OUT ANY PORTION OF THE SEWER.
 4. GRADES TO WHICH THE SEWER IS TO BE CONNECTED ARE SHOWN ON PLANS AND PROFILES. GRADES FROM THE TOP OF CURBS CENTERLINE OF THE STREETS OR FROM THE TOP OF THE SIDEWALKS SHALL BE USED UNLESS OTHERWISE SPECIFIED. THE SEWER SHALL BE ESTABLISHED TO A STRAIGHT LINE BETWEEN SAID GRADES TO A POINT.
 5. THE PRIVATE ENGINEER SHALL FURNISH THE DESIGN OF PUBLIC WORKS WITH GRADE SHEETS AND STATIONING FOR ALL HOUSE LATERALS AND "D" OR "D" BRANCHES AND SHALL PROVIDE STAKE PLACES AT THEIR INTERSECTION WITH THE SEWER. STAKE PLACES AS LOCATED ON THE PLANS AND THE LATERAL PROFILES SHALL NOT HAVE A SPACING OF LESS THAN 10 FEET WITH THE SEWER LINE UNLESS OTHERWISE SPECIFIED. STAKE PLACES SHALL BE PROVIDED BY THE ARCHITECT-ENGINEER.
 6. THE PRIVATE ENGINEER SHALL FURNISH THE FINAL DESIGN OF THE SEWER LINE BELOW THE TOP OF CURB ELEVATION FOR EACH HOUSE LATERAL ON THE GRADE SHEET.
 7. BEFORE WORK IS BEGUN THE CONTRACTOR MUST OBTAIN A PERMIT TO EXCAVATE AND "D" STAKE PLACES FROM THE CONSTRUCTION DIVISION OF THE LOS ANGELES DEPARTMENT OF PUBLIC WORKS. THE PERMIT SHALL BE OBTAINED FROM THE DIRECTOR OF PUBLIC WORKS, 800 S. F STREET, ALHAMBRA, CALIF. 91803 - 8TH FLOOR TO COVER THE COST OF CONSTRUCTION OF THE SEWER AND RECORD PLANS.
 8. IF WORK IS TO BE DONE IN A STATE HIGHWAY A PERMIT MUST BE OBTAINED FROM THE STATE OF CALIFORNIA DIVISION OF HIGHWAYS, 1200 SOUTH BRIDGE STREET, LOS ANGELES, CALIF. 90015.
 9. APPROVAL OF THIS PLAN BY THE COUNTY OF LOS ANGELES DOES NOT CONSTITUTE A REPRESENTATION AS TO THE ACCURACY OF THE LOCATION OF OR THE EXISTENCE OR NON-EXISTENCE OF ANY UNDERGROUND UTILITY PIPE OR STRUCTURE WITHIN THE LIMITS OF THIS PROJECT. THIS NOTE APPLIES TO ALL PAGES.
 10. UNLESS OTHERWISE SPECIFIED BY THE STANDARD SPECIFICATIONS REGARDING SAFETY ORDERS.
 11. PRIOR TO THE BEGINNING OF THE SEWER CONSTRUCTION PERMIT THE CONTRACTOR SHALL OBTAIN A PERMIT WITH THE DEPARTMENT OF PUBLIC WORKS CONCERNING A PERMIT TO EXCAVATE IN COUNTY STREETS FROM THE CONSTRUCTION DIVISION OF THE DEPARTMENT OF PUBLIC WORKS. A PERMIT FOR EXCAVATIONS AND TRENCHES FROM THE CITY OF LOS ANGELES, DEPARTMENT OF INDUSTRIAL SAFETY AND CERTIFICATE OF WORKERS COMPENSATION REQUIREMENTS BY THE DEPARTMENT OF PUBLIC WORKS, 800 S. F STREET, ALHAMBRA, CALIF. 91803 - 8TH FLOOR MUST BE OBTAINED PRIOR TO THE BEGINNING OF THE CONSTRUCTION OF THE SEWER.

- CONSTRUCTION NOTES:**
1. SEWER SHALL BE CONSTRUCTED ACCORDING TO THE STANDARD SPECIFICATIONS FOR PUBLIC WORKS CONSTRUCTION (SEE SECTION 2000) AND DEPARTMENT OF PUBLIC WORKS SPECIAL PROVISIONS FOR THE CONSTRUCTION OF SEWERS.
 2. SEWERS SHALL BE DATED JULY 31, 1988 AND SHALL BE PROTECTED BY AN INVERTED SLOPE OF AT LEAST TWENTY-FOUR HOURS BEFORE BACKFILLING AND UNDER THIS CONTRACT.
 3. HOUSE LATERALS TO BE CONSTRUCTED WITH INVERTS AT PROPERTY LINE 2" BELOW CURB GRADE EXCEPT AS NOTED.
 4. SIZES OF THE BRANCHES MAY BE USED FOR CONNECTIONS TO MAINLINE SEWERS EXCEPT AS NOTED.
 5. ALL STRUCTURES SHALL BE EITHER BRICK SEWER MANHOLES OR 30" OR PRECAST CONCRETE SEWER MANHOLES PER 5-18 EXCEPT AS NOTED.
 6. PRECAST STAKES ON THE PROPERTY LINE OR PROPERTY LINE PRODUCE AT RIGHT ANGLES TO THE SEWER LINE AT THE CENTER LINE OF EACH MANHOLE.
 7. MANHOLE TOPS IN UNIMPROVED AREAS OF CITY TO BE 6" ABOVE FINISHED GRADE.
 8. WYTHED CLAY PIPE JOINTS SHALL BE TYPE "D" OR "E" PER STANDARD SPECIFICATIONS SECTION 2000.
 9. IF A HOUSE LATERAL IS MORE THAN 10 FEET FROM THE SEWER THE SEWER SHALL BE ENCASED PER 5-18 CASE IN TWO FEET ON EACH SIDE FROM THE POINT OF INTERFERENCE.
 10. IF A HOUSE LATERAL IS MORE THAN 10 FEET FROM THE SEWER THERE IS LESS THAN FOUR FEET TO COVER THE TOP OF A MAINLINE OF HOUSE LATERAL, "D" SEWER WHICH IS NOT INDICATED ON THE PLANS, THE PIPE SHALL BE ENCASED PER 5-18 CASE UNLESS OTHERWISE APPROVED BY THE DIRECTOR OF PUBLIC WORKS.
 11. ALL JOINTS OF BRICK OR PRECAST CONCRETE SHALL BE MADE WITH A RUBBER GASKET 1/4" THICK OR 1/2" OR 3/4" OR 1" IN THICKNESS IF NECESSARY PER STANDARD SPECIFICATIONS SECTION 2000.
 12. SEWERS TO BE TESTED FOR LEAKAGE PER SECTION 2001 OF THE STANDARD SPECIFICATIONS AND SPECIAL PROVISIONS.
 13. REFER TO ALL PROFILES WITHIN PAVED AREAS TO MEET LOS ANGELES COUNTY PUBLIC WORKS OR CALIFORNIA STATE HIGHWAY REQUIREMENTS AS A REQUIREMENT FOR PERMITS.
 14. FULL COVER LIDS WITH GASKETS PER 5-18 OF THE STANDARD SPECIFICATIONS SHALL BE REQUIRED FOR ALL MANHOLES IN STREETS. OPTICAL POINT OF BACKFILL COMPACTED AND SAND FILL SHALL BE BY A QUALIFIED INSPECTOR FOR THIS LABORATORY SHALL BE PROVIDED BY THE PERMITEE PRIOR TO THE BEGINNING OF A CONTRACT OF A CONTRACT OF A CONTRACT.
 15. BRICK OR PRECAST CONSTRUCTION IN BACKFILL TRENCH AND ALL OTHER EARTH SO AS TO ACHIEVE THE NATURAL OR FINISHED GRADE AND SLOPE SHOWN ON THE SPACING PLAN APPROVED FOR THE DEVELOPER BY THE LAW. THE NEAREST CONNECTION IN ALL BACKFILL AND EARTH AREAS SHALL BE CONNECTED TO A MAINLINE OF SEWER OF MAXIMUM DENSITY PER 5-18 BY THE METHOD OF THE JOINTS AS SPECIFIED IN THE STANDARD SPECIFICATIONS OF SUCH CONNECTION SHALL BE SUBMITTED TO THE CONSTRUCTION DIVISION OF PUBLIC WORKS DEPARTMENT.

PROFILE ALIGNMENT AND GRADE OF
SANITARY SEWERS
 TO BE CONSTRUCTED IN
PARCEL MAP NO. 19711
PRIVATE CONTRACT NO. 11025
INDEX A-69,1295
1 SHEET OF 2 PAGES (53395)
 SCALE: HORIZ. 1" = 40' VERT. 1" = 4'
 AUGUST, 1988
 PREPARED IN THE OFFICES OF
SKANS EN지니어ING ASSOCIATES
 18250 BURNHAM BLVD. VAN NUYS, CA 91411, TEL. (818) 787-8591
 BY: *John Skans*
 REG. C.E. NO. 42820

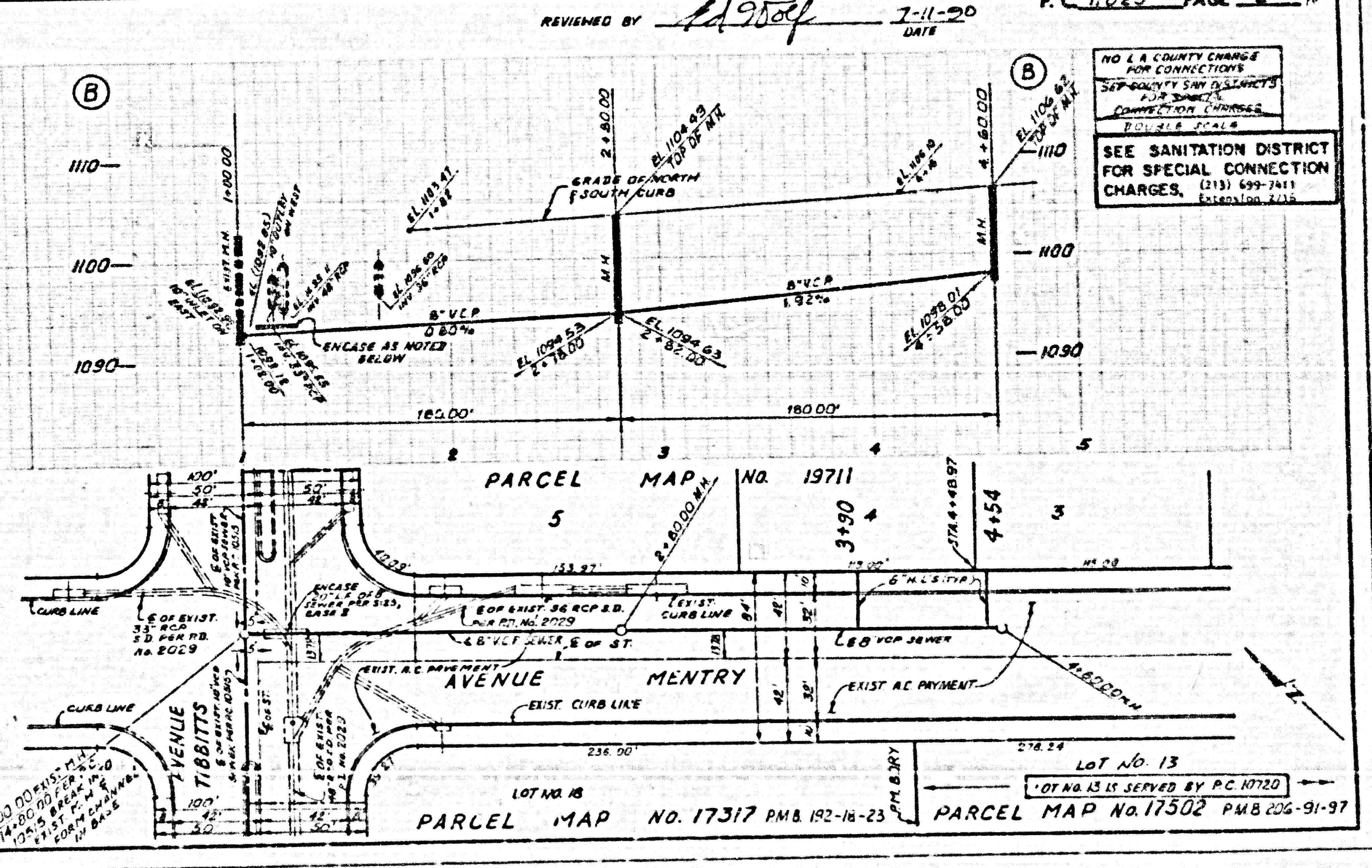
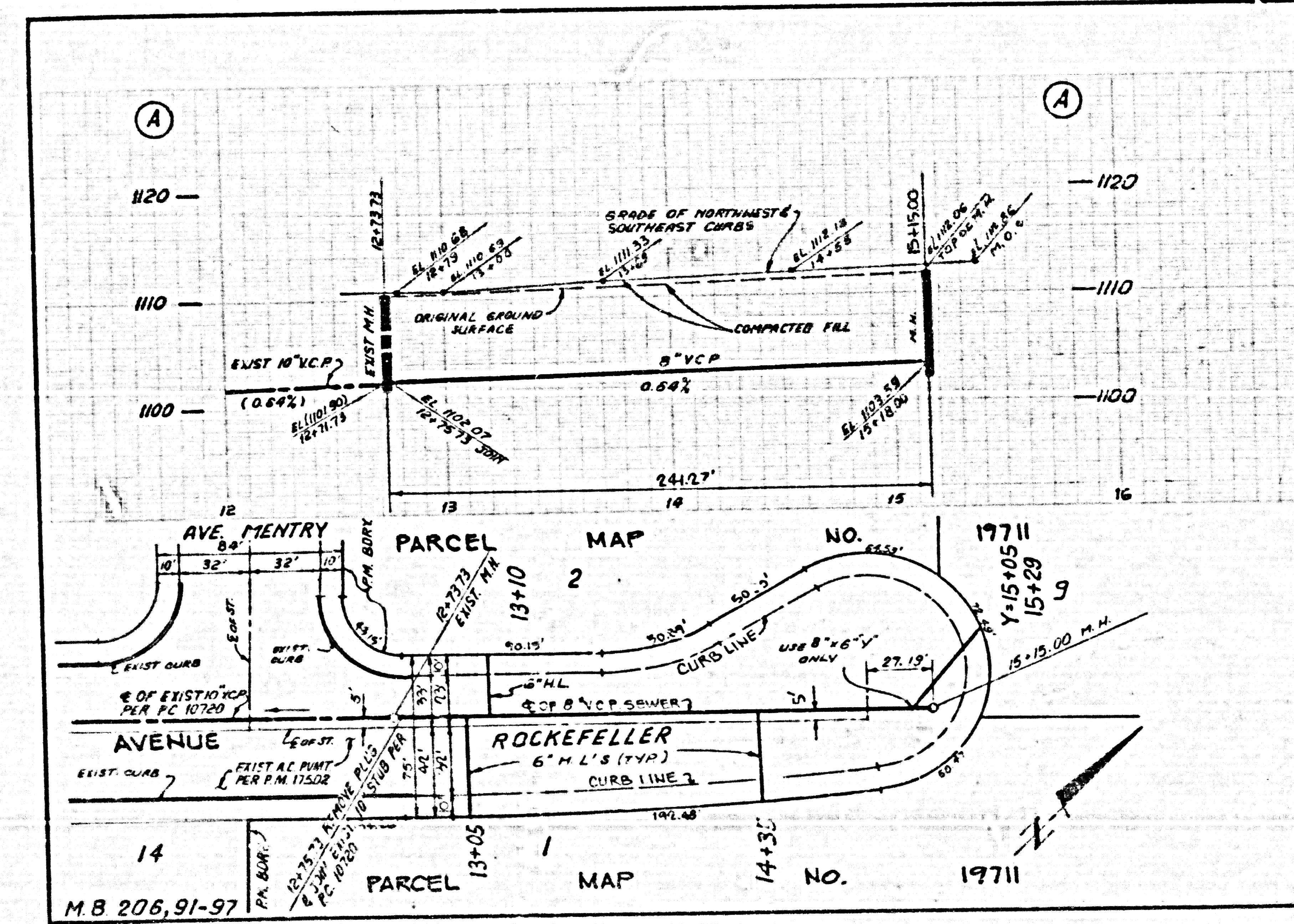
THE FOLLOWING LATEST REVISIONS (HIGHLIGHTED) ARE ON FILE IN THE OFFICE OF THE DEPARTMENT OF PUBLIC WORKS. THEY SHALL APPLY TO THE CONSTRUCTION OF THIS PROJECT.

LEGEND	0-1
MIN. JOINT PUBLIC SAFETY REQUIREMENTS	0-2
BRICK SEWER MANHOLE	0-3
STANDARD MANHOLE TOP	0-4
RECORD FOR REPAIR PIPE	0-5
CORNER AND ENCASING	0-6
PIPE ON THE SURFACE	0-7
ALLOWABLE TRENCH WIDTHS	0-8
LOCKING MANHOLE FRAME AND COVER	0-9
NON-REINFORCED PRECAST CONCRETE SEWER MANHOLE	0-10

COUNTY OF LOS ANGELES, CALIFORNIA
 THOMAS A. TIDEMANSON
 DIRECTOR OF PUBLIC WORKS
 APPROVED: *Thomas Tideman* 7/11/88
 CHECKED: *John Skans* 7/11/88
 REG. C.E. NO. 1116

CHARLES W. CARRY
 CHIEF ENGINEER
 C.E. SAN. DIST. NO. 36
 APPROVED: *Charles W. Carry* 7-18-88
 OFFICE OF THE ENGINEER

SANTA CLARITA VALLEY BLDG. DIST. 82



REVIEWED BY: *Ed 9504* DATE: 7-11-88 P.C. 11025 PAGE 2

NO LA COUNTY CHANGE FOR CONNECTIONS. SEE SANITATION DISTRICT FOR SPECIAL CONNECTION CHARGES. (213) 699-7411 Extension 2115

SEE SANITATION DISTRICT FOR SPECIAL CONNECTION CHARGES. (213) 699-7411 Extension 2115

LOT NO. 13
 LOT NO. 13 IS SERVED BY P.C. 10720

PARCEL MAP NO. 17317 P.M. 192-16-23

PARCEL MAP NO. 17502 P.M. 206-91-97

LA COUNTY ENGINEER DIST. 11.1 C.E. # 12138 8993440 11/87