

B.M. CL 4578 ELEV. 1385.780  
 BDM TAG IN SELV COR CONC  
 BASE FIRE HYDRANT 17 FT ELY  
 CL SLOAN CANYON RD 8 0.45 M.  
 NLY HASLEY CANYON RD.  
 NEWHALL QUAD. 19 83.

REVISION NO. 3 DATE 2/17/98  
 BY LAND TECH ENGINEERING  
 DAVID W. WESTON - R.C.E. NO. 80228 - EXP. 9-30-01  
 REVISED LOCATION OF PROPOSED S.D. LINES  
 ON PAGES 8, 9 AND 10 ALSO VOIDED FOR 64, 68,  
 11, 12, 13, 14 AND 15. ADD CONNECTION NOTE PG. 1.  
 APPROVED: *[Signature]* 33134  
 DEPT. OF PUBLIC WORKS R.C.E. NO.

PRIVATE ENGINEER'S NOTICE TO CONTRACTORS

THE EXISTENCE AND LOCATION OF ANY UNDERGROUND UTILITY PIPE OR STRUCTURES SHOWN ON THESE PLANS ARE OBTAINED BY A SEARCH OF THE AVAILABLE RECORDS. TO THE BEST OF OUR KNOWLEDGE THERE ARE NO EXISTING UTILITIES EXCEPT AS SHOWN ON THESE PLANS. THE CONTRACTOR IS ADVISED TO TAKE THE NECESSARY PRECAUTIONS TO PROTECT THE UTILITY LINES SHOWN AND ANY OTHER LINES NOT OF RECORD OR NOT SHOWN ON THESE PLANS. THE CONTRACTOR SHALL BE RESPONSIBLE FOR NOTIFYING "UNDERGROUND SERVICE ALERT" AT 1-800-482-1123 TWO WORKING DAYS PRIOR TO ANY EXCAVATION OR CONSTRUCTION.

REVISION NO. 1 DATE 11-23-93  
 BY B & E ENGINEERS DATE 11-23-93  
 DELETED LINES 6F AND 6D  
 ADDED LINES 2C AND 9B  
 APPROVED: *[Signature]* 33134  
 DEPT. OF PUBLIC WORKS R.C.E. NO.

GENERAL NOTES: DOUBLE SCALE

1. ELEVATIONS ARE IN FEET ABOVE U.S.C. & G.S. SEA LEVEL DATUM OF 1985.
2. NO REVISIONS SHALL BE MADE IN THESE PLANS WITHOUT THE APPROVAL OF THE DIRECTOR OF PUBLIC WORKS.
3. NO REPRESENTATIVE OF THE DEPARTMENT OF PUBLIC WORKS WILL SURVEY OR LAY OUT ANY PORTION OF THE WORK.
4. GRADES TO WHICH THIS IMPROVEMENT IS TO BE CONSTRUCTED ARE SHOWN ON PLANS AND PROFILES GRADE POINTS FOR TOP OF CURBS, CENTER LINE OF STREETS, CENTER LINE OF ALLEYS ARE SHOWN BY PROFILE POINTS AT ALL POINTS BETWEEN SAID DESIGNATED POINTS. THE GRADE SHALL BE ESTABLISHED SO AS TO CONFORM TO A STRAIGHT LINE DRAWN BETWEEN SAID DESIGNATED POINTS.
5. THE PRIVATE ENGINEER SHALL FURNISH THE DEPARTMENT OF PUBLIC WORKS WITH GRADE SHEETS AND STATIONINGS FOR ALL HOUSE LATERALS AND 12" OR 18" BRANCHES AND SHALL PROVIDE STAKES FOR THEM AT THESE PROPER LOCATIONS WITH STATIONING FULLY MARKED. ALL HOUSE LATERALS SHALL BE CONSTRUCTED IN A STRAIGHT ALIGNMENT AT RIGHT ANGLES FROM THE MAINLINE SEWER EXCEPT AS SHOWN ON THE PLANS. HOUSE LATERALS FROM CHIMNEYS SHALL NOT HAVE AN ANGLE OF LESS THAN 45° WITH THE MAINLINE SEWER. ANY CHANGE IN ALIGNMENT SHALL BE REQUESTED IN WRITING BY THE PRIVATE ENGINEER.
6. THE PRIVATE ENGINEER SHALL FURNISH THE HOUSE LATERAL DEPTH AT THE PROPERTY LINE BELOW THE TOP OF CURB ELEVATION FOR EACH HOUSE LATERAL ON THE GRADE SHEET.
7. BEFORE WORK CAN BE STARTED, THE CONTRACTOR MUST OBTAIN A PERMIT TO EXCAVATE IN COUNTY STREETS FROM THE CONSTRUCTION DIVISION OF THE LOS ANGELES DEPARTMENT OF PUBLIC WORKS PERMIT OFFICE NO. 8 AND PAY A FEE TO THE DIRECTOR OF PUBLIC WORKS, 800 S. FREEMONT AVE., ALHAMBRA, CALIFORNIA 91803 - 5TH FLOOR, TO COVER THE COST OF CONSTRUCTION INSPECTION AND RECORD PLANS.
8. IF WORK IS TO BE DONE IN A STATE HIGHWAY A PERMIT MUST BE OBTAINED FROM THE STATE OF CALIFORNIA, DIVISION OF HIGHWAYS, 120 SOUTH SPRING STREET, LOS ANGELES, CALIFORNIA.
9. APPROVAL OF THIS PLAN BY THE COUNTY OF LOS ANGELES DOES NOT CONSTITUTE A REPRESENTATION AS TO THE ACCURACY OF THE LOCATION OF OR THE EXISTENCE OR NON-EXISTENCE OF ANY UNDERGROUND UTILITY PIPE OR STRUCTURE WITHIN THE LIMITS OF THIS PROJECT. THIS NOTE APPLIES TO ALL PAGES.
10. REFER TO SECTION 118.4 OF THE STANDARD SPECIFICATIONS REGARDING SAFETY ORDERS.
11. PRIOR TO THE ISSUANCE OF THE REQUIRED SEWER CONSTRUCTION PERMIT, THE CONTRACTOR SHALL OBTAIN AND FILE WITH THE DEPARTMENT OF PUBLIC WORKS COPIES OF A PERMIT TO EXCAVATE IN COUNTY STREETS FROM THE CONSTRUCTION DIVISION OF THE DEPARTMENT OF PUBLIC WORKS, A PERMIT TO EXCAVATE AND TRENCHES FROM THE STATE OF CALIFORNIA, DIVISION OF INDUSTRIAL SAFETY AND CERTIFICATE OF WORKERS COMPENSATION INSURANCE WITH THE DEPARTMENT OF PUBLIC WORKS, 800 S. FREEMONT AVE., ALHAMBRA, CALIFORNIA 91803 - 5TH FLOOR, NAMED AS THE CERTIFICATE HOLDER TO BE NOTICED 30 DAYS PRIOR TO CONSTRUCTION OF POLICY.

CONSTRUCTION NOTES:

1. WORK SHALL BE CONSTRUCTED ACCORDING TO THE STANDARD SPECIFICATIONS FOR PUBLIC WORKS CONSTRUCTION (1988 EDITION) AND DEPARTMENT OF PUBLIC WORKS SPECIAL PROVISIONS FOR THE CONSTRUCTION OF SEWERS WHICH ARE SHOWN AS PART 11.189 AND SHALL BE OBSERVED ONLY IN THE PRESENCE OF THE DEPARTMENT OF PUBLIC WORKS.
2. THE CONTRACTOR SHALL NOTIFY THE CONSTRUCTION DIVISION BY TELEPHONE, IMMEDIATELY, AT LEAST TWENTY-FOUR HOURS BEFORE STARTING ANY WORK UNDER THIS CONTRACT.
3. HOUSE LATERALS TO BE CONSTRUCTED WITH INVERTS AT PROPERTY LINE 6 FEET BELOW CURB GRADE EXCEPT AS NOTED.
4. WYE OR TEE BRANCHES MAY BE USED FOR CONNECTIONS TO MAINLINE SEWERS EXCEPT AS NOTED.
5. ALL STRUCTURES SHALL BE EITHER BRICK SEWER MANHOLES PER 5-20 OR PRECAST CONCRETE SEWER MANHOLES PER 5-20, OR APPROVED PRECAST CONCRETE MANHOLES PER 5-20.
6. PROVIDE STAKES ON THE PROPERTY LINE OR PROPERTY LINES PRODUCED AT RIGHT ANGLES TO THE SEWER LINE AT THE CENTER LINE OF EACH MANHOLE.
7. MANHOLE TOPS IN UNIMPROVED RIGHTS OF WAY TO BE SIX INCHES ABOVE FINISHED GRADE.
8. STRENGTHENED CLAY PIPE JOINTS SHALL BE TYPE "C" OR "D" PER STANDARD SPECIFICATIONS SECTION 208-2.
9. IF A POWER POLE IS WITHIN THREE FEET OF THE SEWER, THE SEWER SHALL BE ENCASED PER 5-23, CASE I, TWO FEET EACH SIDE FROM THE POINT OF INTERFERENCE.
10. DURING THE COURSE OF CONSTRUCTION IT IS DETERMINED THAT THERE IS LESS THAN FOUR FEET OF COVER OVER THE TOP OF A MAINLINE OR HOUSE LATERAL V.C.P. SEWER WHICH IS NOT INDICATED ON THE PLANS, THE PIPE SHALL BE ENCASED PER 5-23, CASE II UNLESS OTHERWISE APPROVED BY THE DIRECTOR OF PUBLIC WORKS.
11. ALL JOINTS BETWEEN CAST IRON PIPE AND WITHDRAWN CLAY PIPE SHALL BE MADE WITH A RUBBER SLEEVES JOINT TYPE "C" OR "D" WITH BUSHING IF NECESSARY PER STANDARD SPECIFICATIONS, SECTION 208-2.
12. SEWERS TO BE TESTED FOR LEAKAGE PER SECTION 208-1.4 OF THE STANDARD SPECIFICATIONS AND SPECIAL PROVISIONS.
13. RESURFACE ALL TRENCHES WITHIN PAVED AREAS TO MEET LOS ANGELES COUNTY PUBLIC WORKS OR CALIFORNIA STATE HIGHWAY REQUIREMENTS IN ACCORDANCE WITH PERMITS.
14. FULL COMPLIANCE WITH SECTION 208-1.4 OF THE STANDARD SPECIFICATIONS WILL BE REQUIRED FOR BACKFILL IN STREETS. CERTIFICATION OF BACKFILL COMPACTION AND SAMPLING TESTS BY QUALIFIED REGISTERED TESTING LABORATORY SHALL BE PROVIDED BY THE PERMITTEE PRIOR TO THE ISSUANCE OF A CERTIFICATE OF PARTIAL ACCEPTANCE.
15. SPECIAL BACKFILL IN BARREMENT CONSTRUCTION IS BACKFILL TRENCH AND REPLACE OTHER EARTH SO AS TO ACHIEVE THE NATURAL OR FINISHED GRADES AND SLOPES SHOWN ON THE GRADING PLAN APPROVED BY THE LAND DEVELOPMENT DIVISION.
16. ALL BACKFILL AND EARTH REPLACED SHALL BE COMPACTED TO A MINIMUM OF 90% OF MAXIMUM DENSITY PER A.S.T.M. METHOD OF TEST D955 BY AN APPROVED ACCEPTABLE CERTIFICATION OF SUCH CONSTRUCTION SHALL BE SUBMITTED TO THE CONSTRUCTION DIVISION, PUBLIC WORKS DEPARTMENT.

TRACT NO. 47353 PRIVATE CONTRACT NO. 11034

INDEX 12/15 6 SHEETS, 3 PAGES

SCALE: VERT. 1"=8' HORIZ. 1"=40' SEPTEMBER, 1989

PREPARED IN THE OFFICES OF Log Design Services, Inc.

BY: *[Signature]* DATE: 11/24/92  
 C. P. LANGE, R.E. NO. 28022  
 MY AUTHORITY EXPIRES: 9/30/94

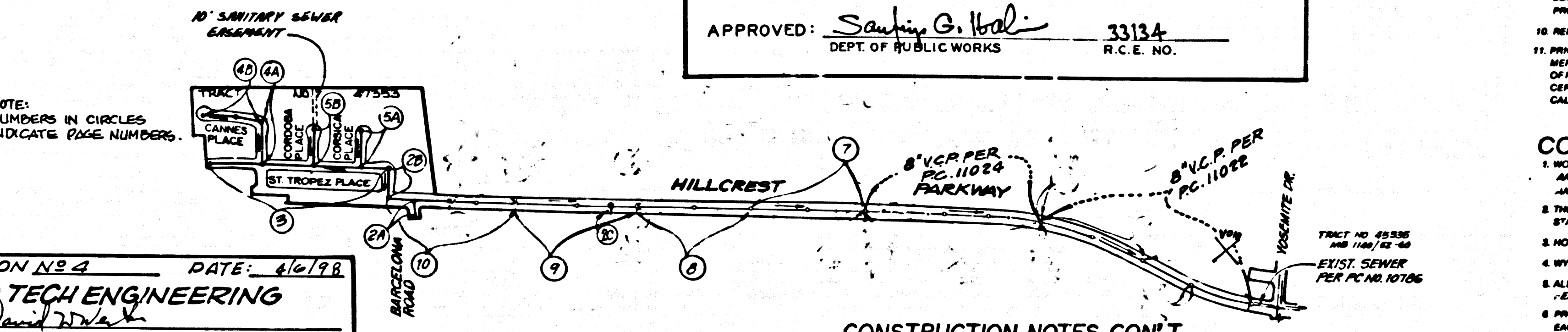
THE FOLLOWING LATEST REVISED STANDARD PLANS ON FILE IN THE OFFICE OF THE DEPARTMENT OF PUBLIC WORKS SHALL APPLY IN THE CONSTRUCTION OF THIS PROJECT:

MINIMUM PUBLIC SAFETY REQUIREMENTS	5-1
LEAKAGE	5-2
BRICK SEWER MANHOLE	5-3
STANDARD MANHOLE STEP	5-4
RECORDING FOR SEWER PIPE	5-5
CRADLING AND ENGAGEMENT	5-6
WYE OR TEE SUPPORT	5-7
ALL-COMBLE TRENCH NOTES	5-8
LOCKING MANHOLE FRAME AND COVER	5-9
NON-REINFORCED PRECAST CONCRETE SEWER MANHOLE	5-10
TOP OF PIPE AND BASE	5-11
REINFORCED PRECAST CONCRETE MANHOLE	5-12
SPECIAL HOUSE LATERALS	5-13

COUNTY OF LOS ANGELES, CALIFORNIA  
 THOMAS A. TIDEMANSON DIRECTOR OF PUBLIC WORKS

CHARLES W. CARRY CHIEF ENGINEER  
 CO. SAN DIST. NO. 22

APPROVED: *[Signature]* 12-14-92  
 CHECKED: *[Signature]* 12-14-92  
 REG. CE NO. 20773  
 CALABASAS BLDG. DIST. 82

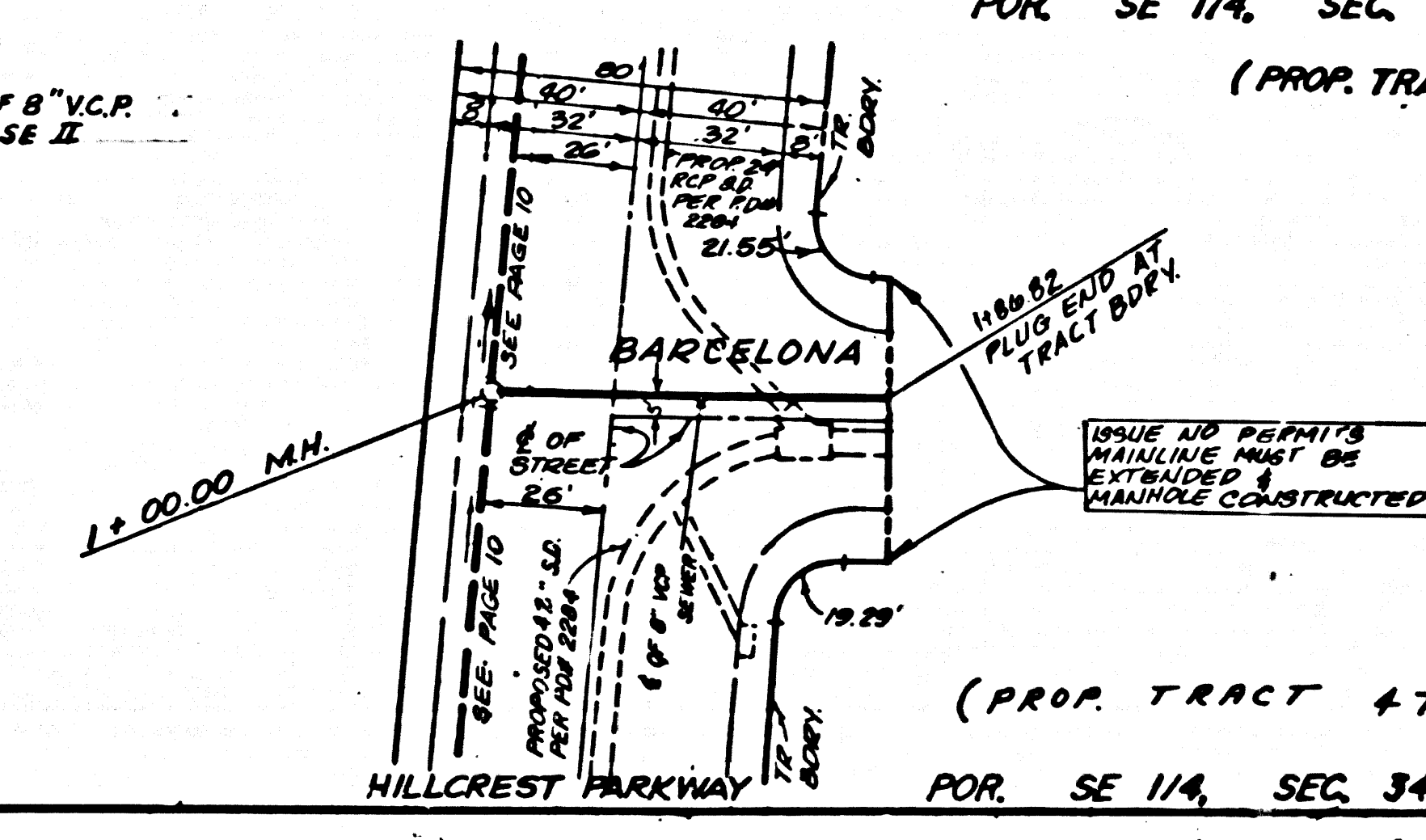
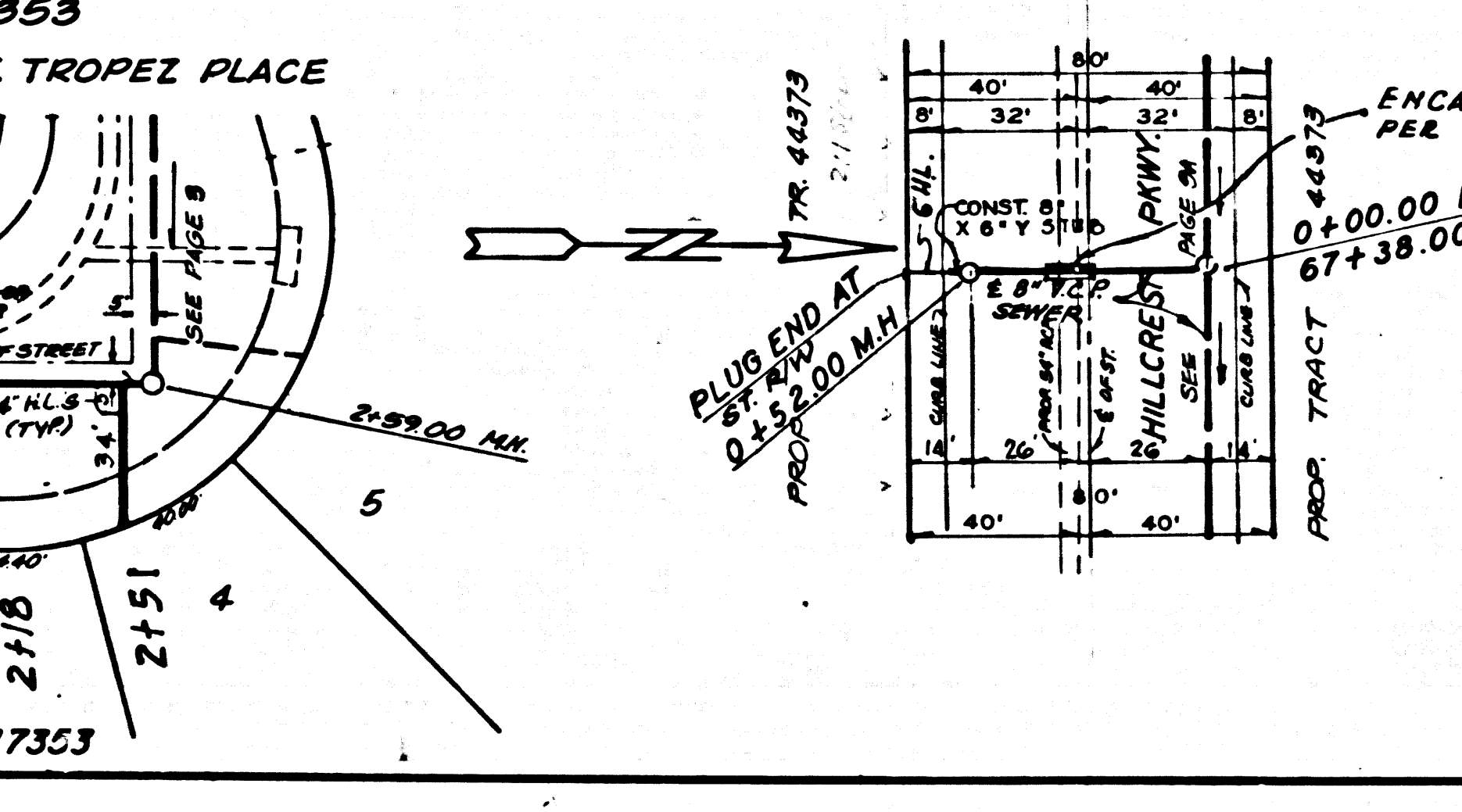
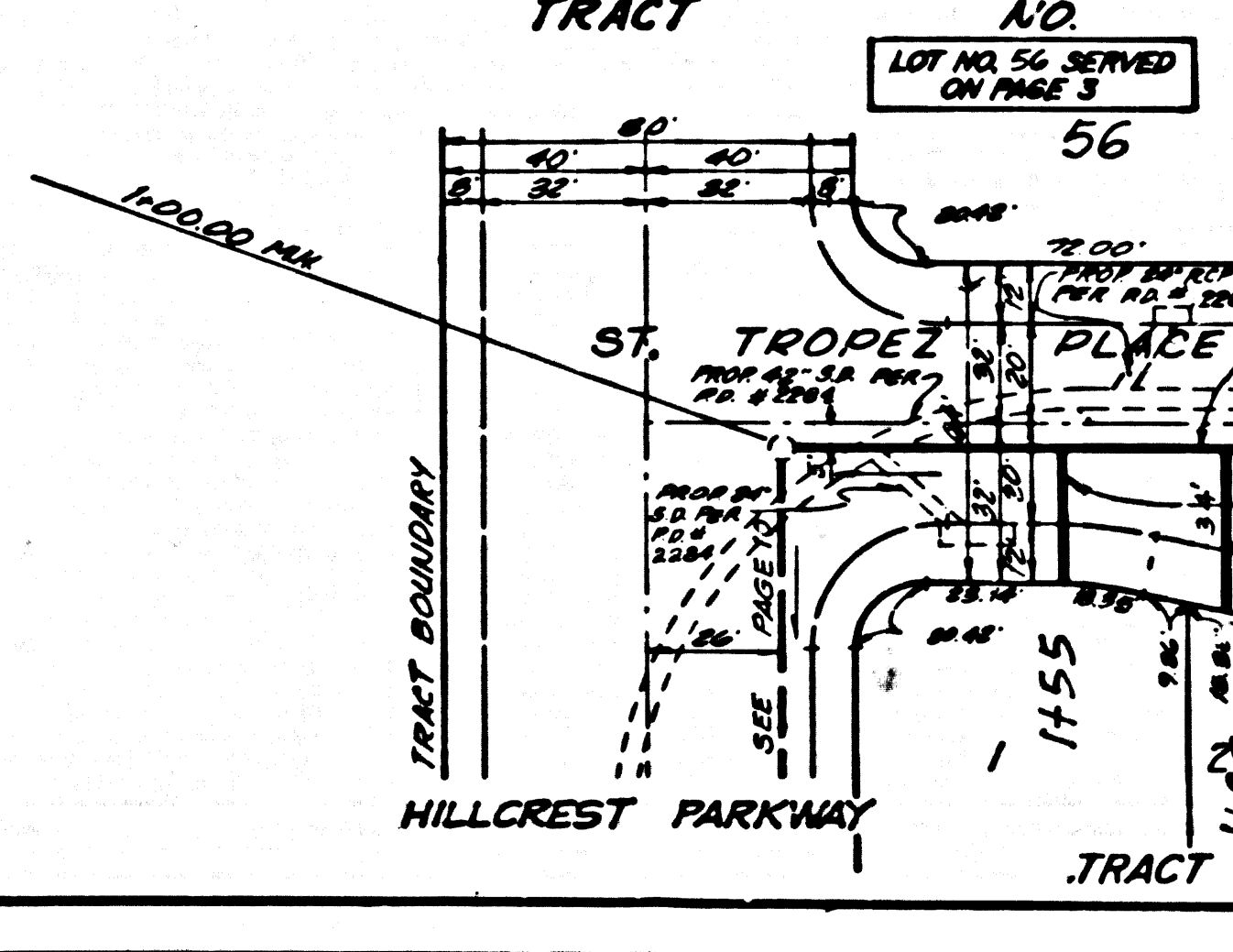
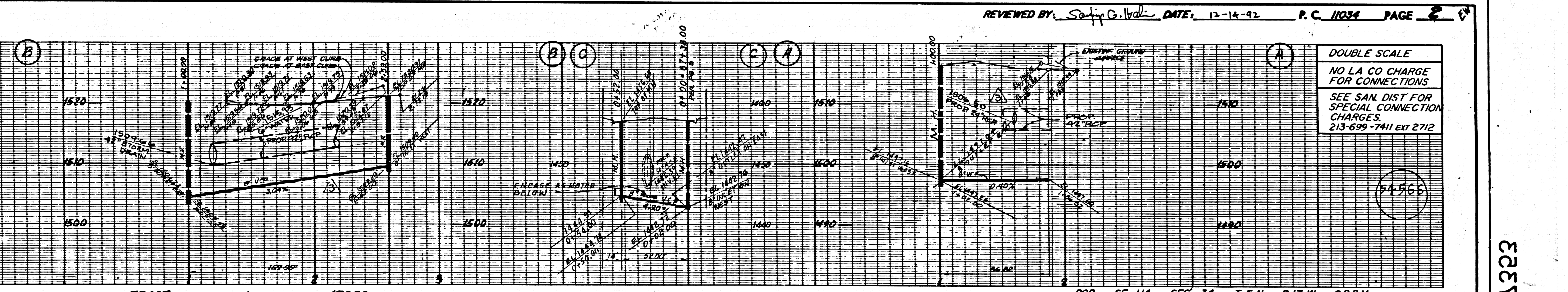


REVISION NO. 4 DATE 6/16/98  
 LAND TECH ENGINEERING  
 DAVID W. WESTON - R.C.E. NO. 80228 - EXP. 9-30-01  
 REVISED M.H. LOCATION FROM 774.18.85  
 BACK TO 764.55.89 RANGE 10. CHANGE PIPE  
 SIZE & GRADE FROM 8" V.C.P. 1.38' TO 12" V.C.P.  
 0.20% (FROM STA. 764.55.89 TO 774.18.85) OF RES. O.  
 APPROVED: *[Signature]* 33134  
 DEPT. OF PUBLIC WORKS R.C.E. NO.

CONSTRUCTION NOTES CON'T.

11. FULL COMPLIANCE WITH PART 11 OF THE SPECIAL PROVISIONS IS REQUIRED FOR THE INSTALLATION OF A.S.S. COMPOSITE PIPE.
12. MANHOLE WATER STOP BANDS AND CLAMPS ARE REQUIRED FOR THE CONNECTION OF A.S.S. COMPOSITE PIPE TO MANHOLE STRUCTURES.
13. A.S.S. S.D. WALL PIPE MUST BE USED FOR WYE AND HOUSE LATERAL CONNECTIONS TO A.S.S. COMPOSITE MAINLINE SEWER PIPE.
14. A.S.S. COMPOSITE PIPE SHALL BE INSTALLED IN CONFORMANCE WITH THE TABLE IN SECTION 8-1.1 OF PART 11 OF THE SPECIAL PROVISIONS.
15. THREE JOINTS DEFLECTION COEFFICIENT ARE REQUIRED FOR RADIUS OF CURVES LESS THAN 100 FEET WHEN USING A.S.S. COMPOSITE PIPE.
16. NO CONNECTIONS FOR DISPOSAL OF INDUSTRIAL WASTE IS ALLOWED IF A.S.S. COMPOSITE PIPE IS USED.
17. SEWER LINE CURVATURE SHALL NOT BE ACHIEVED BY PULLING OF JOINTS OR BENDING PIPE ENDS WHEN USING PLASTIC PIPE INCLUDING A.S.S. COMPOSITE PIPE.
18. ALL WYES AND OR HOUSE LATERALS ARE TO BE LOCATED AT LEAST FIVE FEET APART AND WHEN POSSIBLE NOT CLOSER THAN FIVE FEET TO ANY MANHOLE.
19. A.S.S. S.D. WALL PIPE IS NOT ACCEPTABLE FOR USE AS MAINLINE SEWER.
20. ONLY WYE BRANCHES ARE TO BE USED FOR CONNECTION TO A.S.S. COMPOSITE MAINLINE SEWER PIPE.

INDEX MAP  
 TRACT No. 47353  
 P.C. No. 11034  
 SCALE: 1"=400'  
 THOMAS GUIDE PG. 12322



DOUBLE SCALE  
 NO L.A. CO CHARGE FOR CONNECTIONS  
 SEE SAN DIST FOR SPECIAL CONNECTION CHARGES.  
 213-699-7411 ext 2712

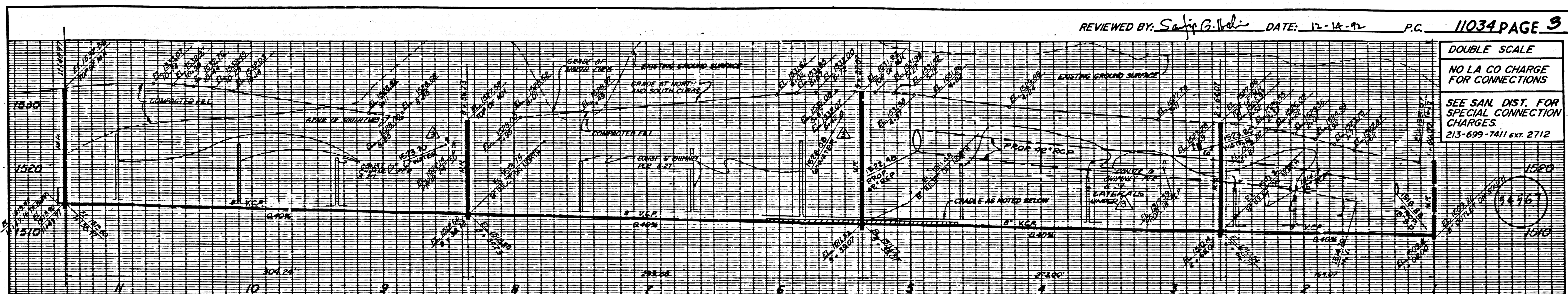
TRACT NO. 47353  
 ST. TROPEZ PLACE  
 LOT NO. 56 SERVED ON PAGE 3

TRACT NO. 47353  
 HILLCREST PARKWAY

TRACT NO. 47353  
 BARCELONA

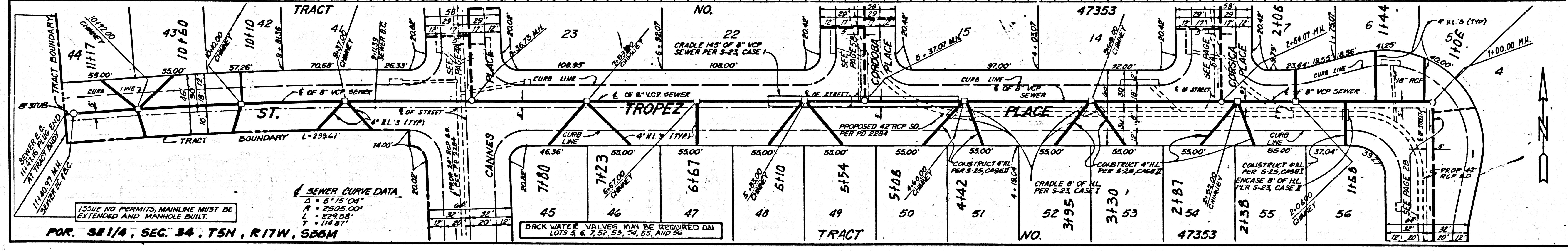
TRACT NO. 47353  
 HILLCREST PARKWAY

TRACT NO. 47353  
 HILLCREST PARKWAY



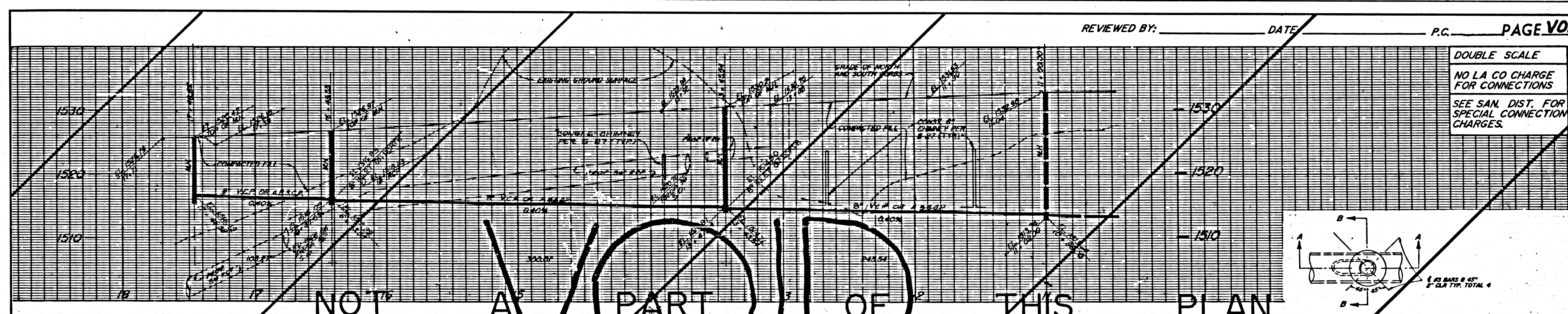
REVIEWED BY: S. G. V. L. DATE: 12-18-92 P.C. 11034 PAGE 3

DOUBLE SCALE  
NO LA CO CHARGE FOR CONNECTIONS  
SEE SAN. DIST. FOR SPECIAL CONNECTION CHARGES  
213-699-7411 EXT. 2712



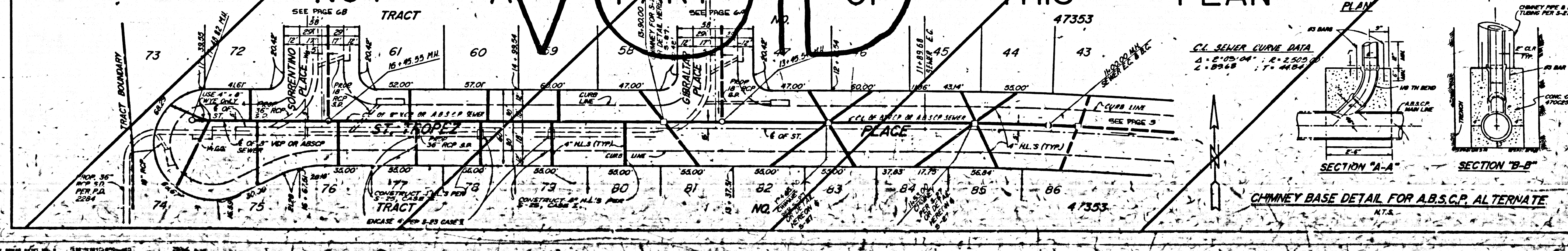
FOR. 381/4, SEC. 34, T5N, R17W, S28M

BACK WATER VALVES MUST BE REQUIRED ON LOTS 3 & 7, 23, 25, 24, 55, AND 56



REVIEWED BY: \_\_\_\_\_ DATE: \_\_\_\_\_ P.C. \_\_\_\_\_ PAGE VOID

DOUBLE SCALE  
NO LA CO CHARGE FOR CONNECTIONS  
SEE SAN. DIST. FOR SPECIAL CONNECTION CHARGES.



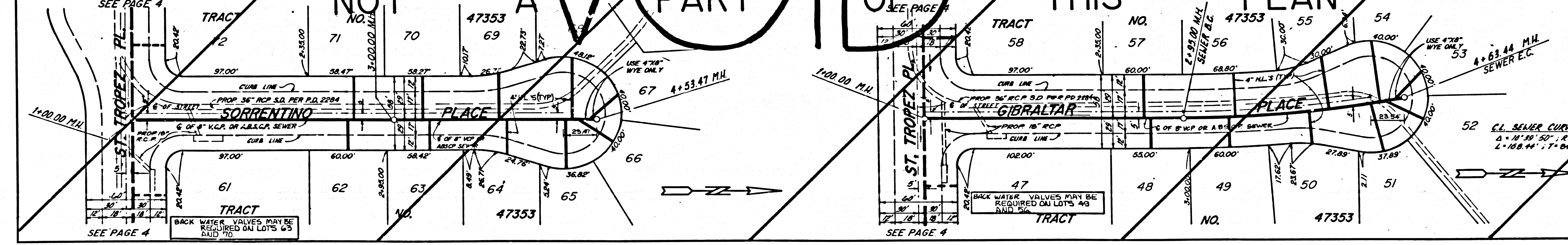
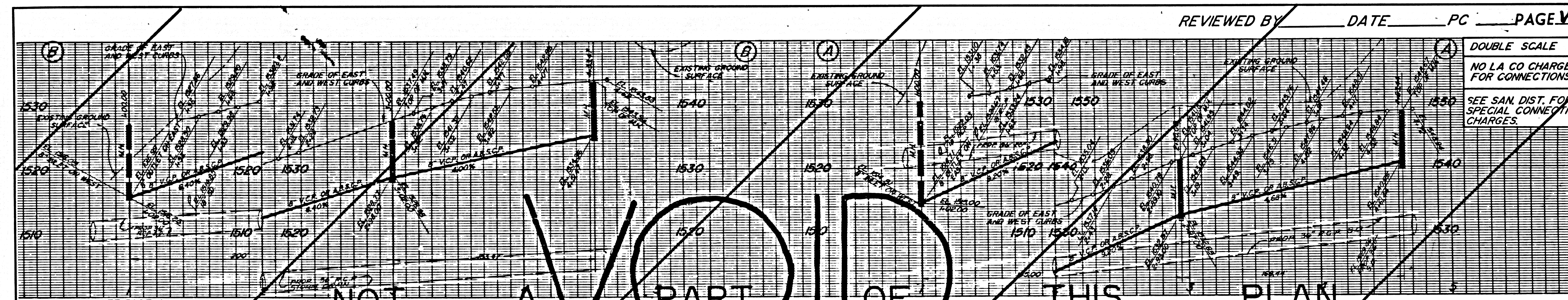
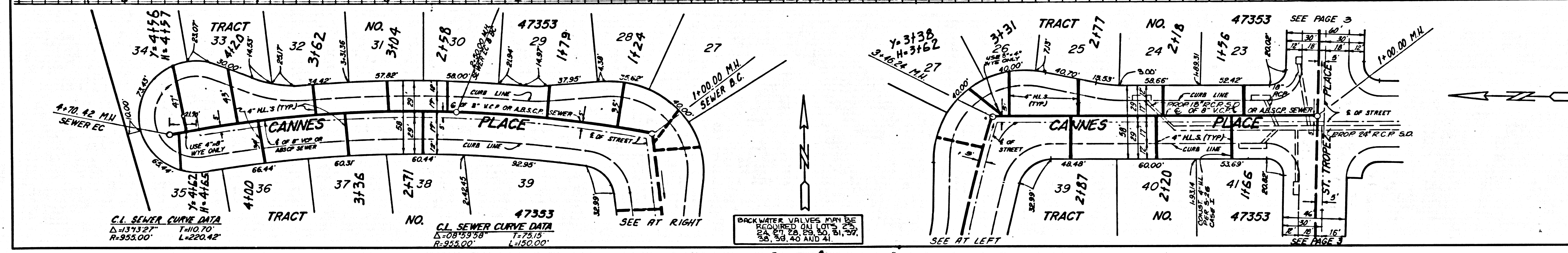
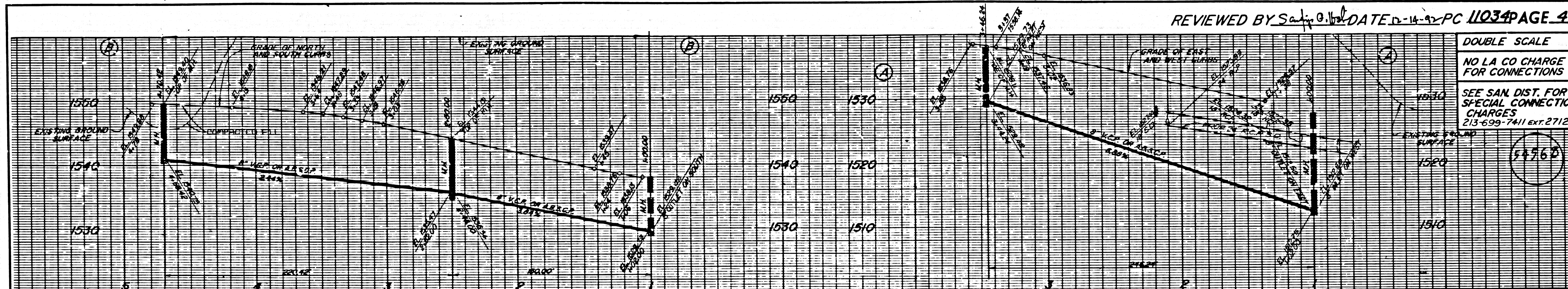
CL. SEWER CURVE DATA  
D = 5'10.04"  
A = 2'502.00"  
L = 1'14.87"

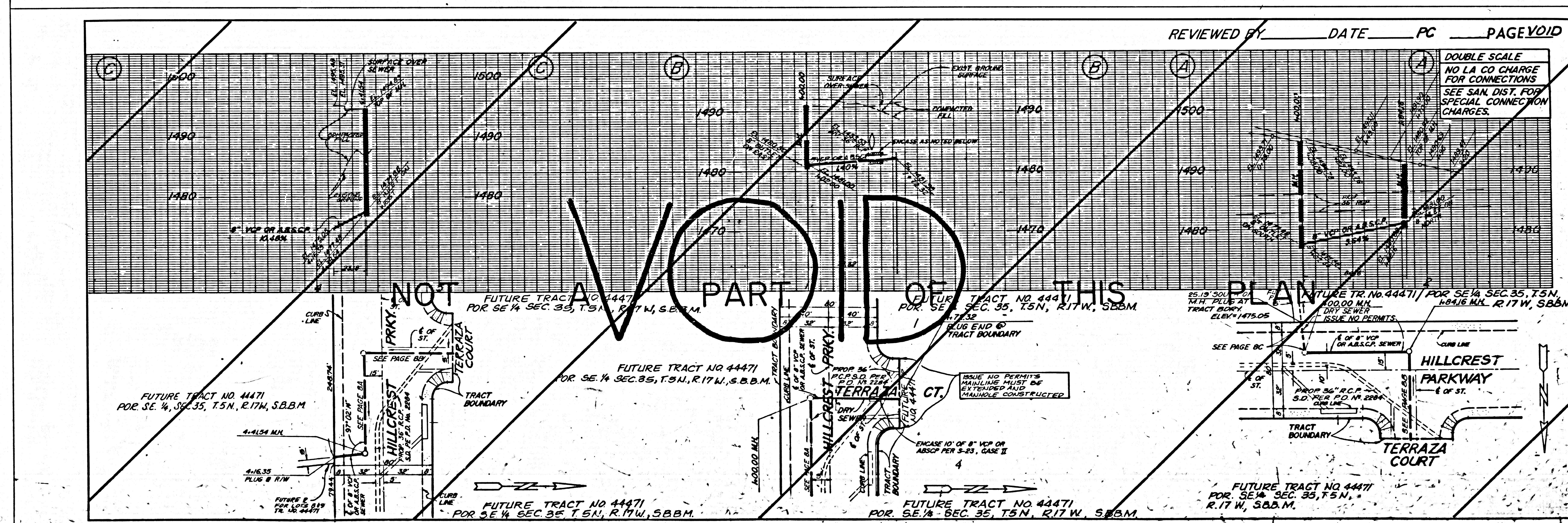
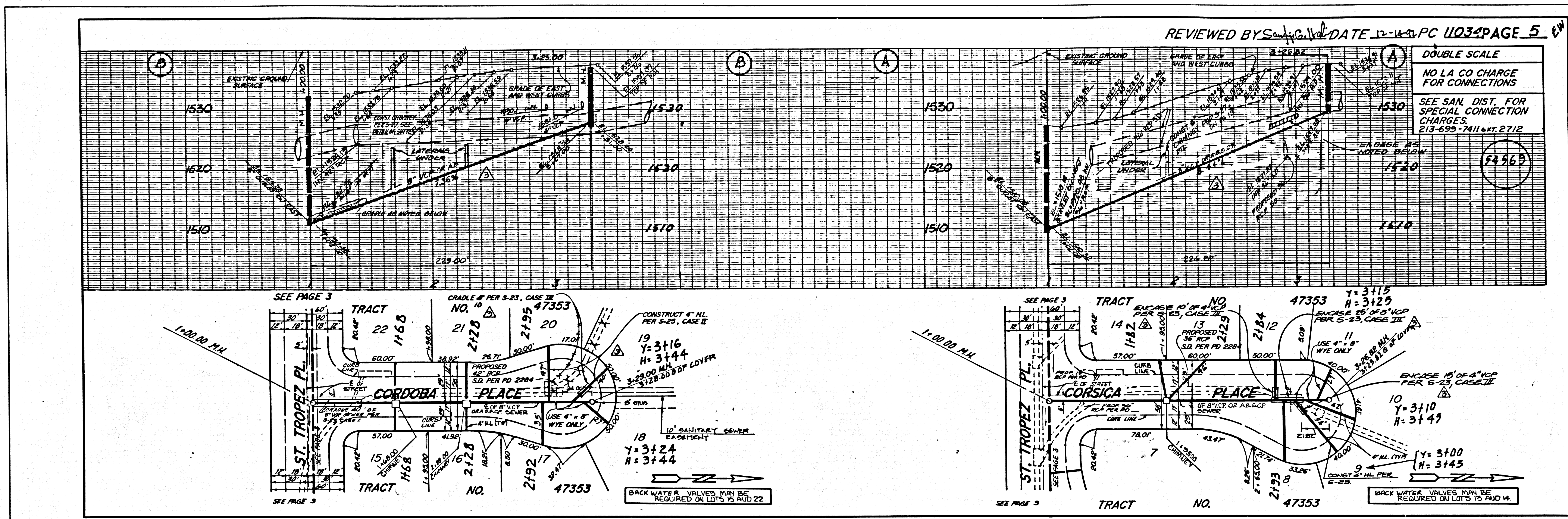
CHIMNEY BASE DETAIL FOR A.B.S.C.P. ALTERNATE

5

PC 11034

381/4 OF TRACT

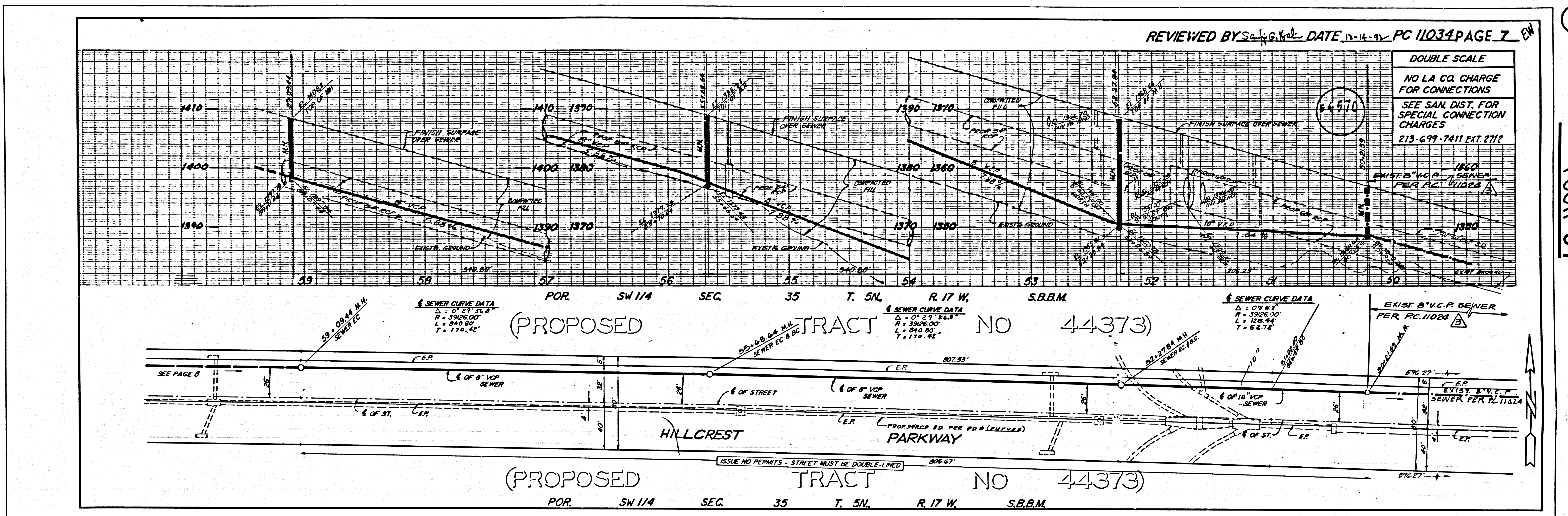




4

PC  
43011

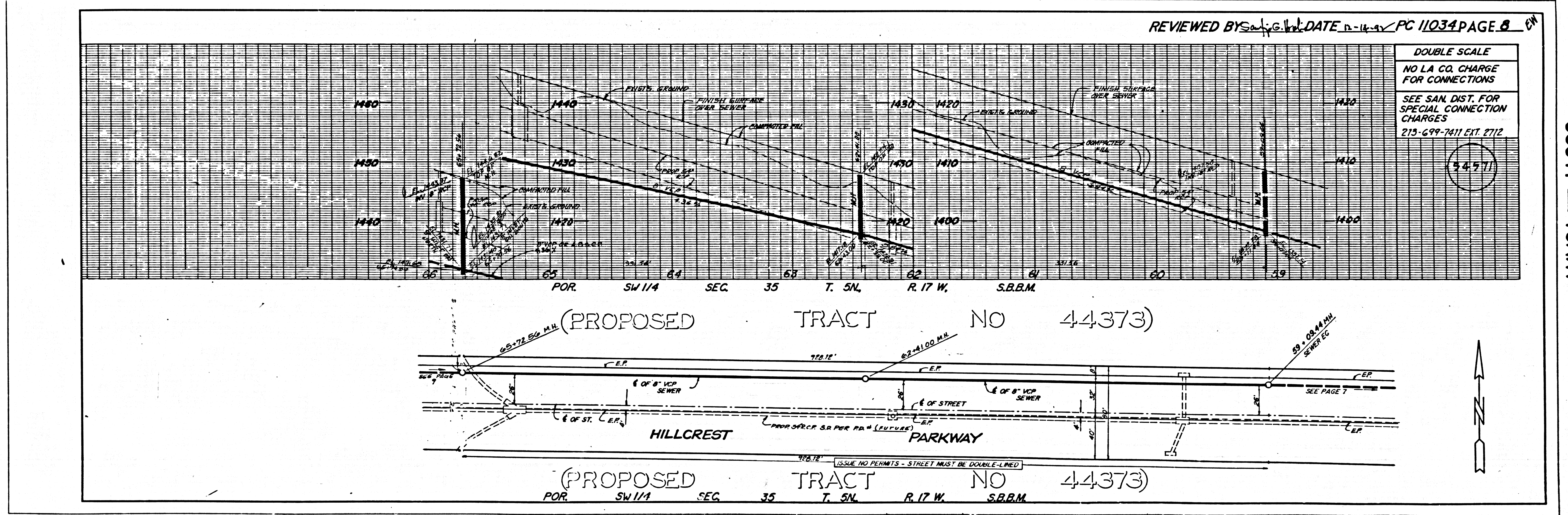
PC  
43231



DOUBLE SCALE  
 NO L.A. CO. CHARGE FOR CONNECTIONS  
 SEE SAN. DIST. FOR SPECIAL CONNECTION CHARGES  
 213-699-7411 EXT. 2712

2

PC 11034



DOUBLE SCALE  
 NO L.A. CO. CHARGE FOR CONNECTIONS  
 SEE SAN. DIST. FOR SPECIAL CONNECTION CHARGES  
 213-699-7411 EXT. 2712

3

PC 11034

