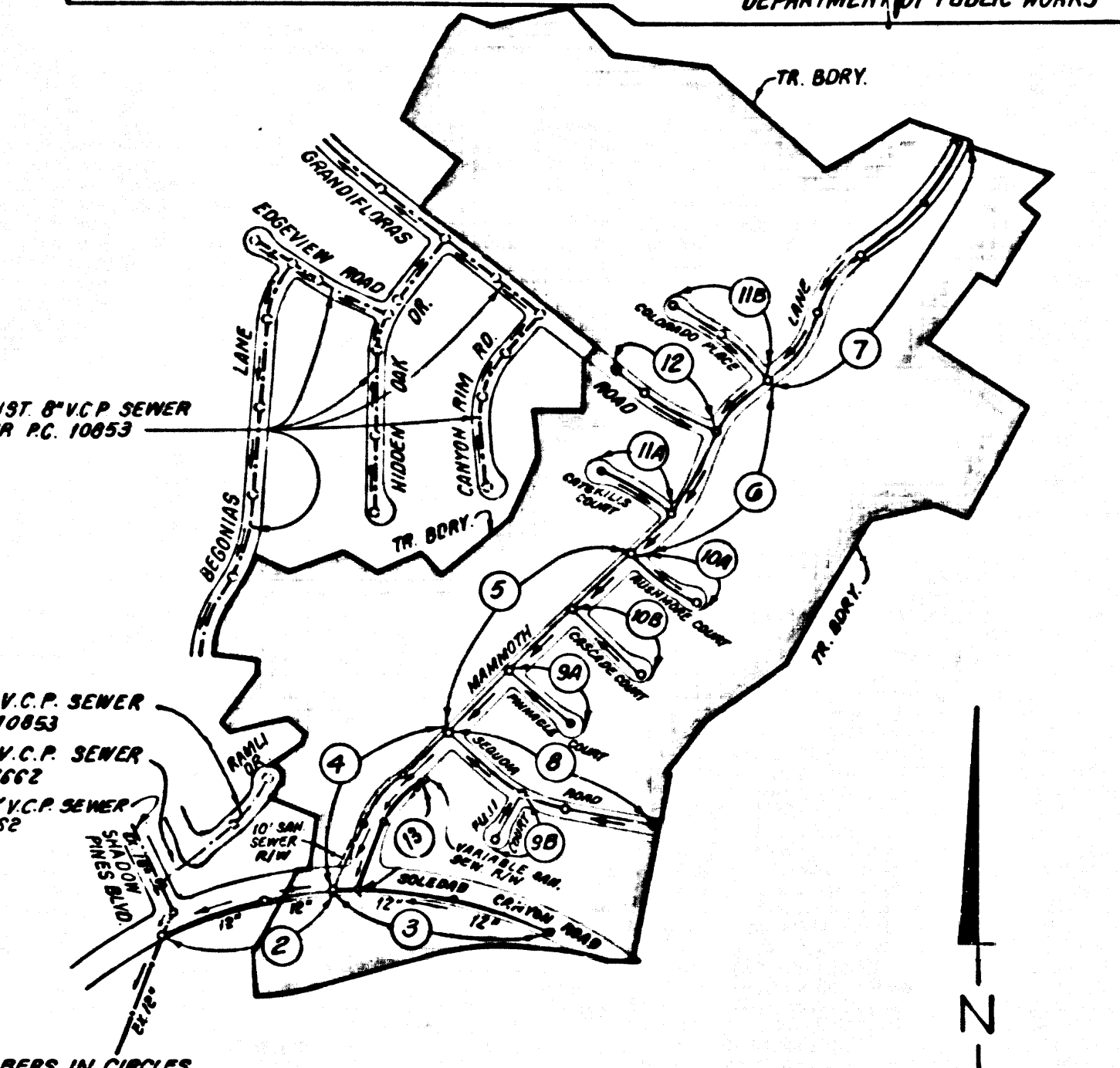


B.M. CL 5009 ELEV. 1671.075
 RAM-SET SE COR. CONC. BASE LITE POST #35 772 AT
 SE COR. SOLEDAD CYN. RD. AND MAMMOTH LANE. FROM
 CTR. (LY OFF-RAMP) 61 FT. E CTR. OFF-RAMP AND 36
 FT. 30 CTR. SOLEDAD CYN. RD. 36 FT. W. P.P. 1482714 E
 NEWHALL QUAD. 19 83

REVISION NO. 1
 1. PAGE 2 REVISE PIPE SIZE AND INLET ELEV.
 2. PAGE 4 REVISE PIPE SIZE AND INVERT ELEVATIONS IN PROFILE
 3. PAGE 8 REVISE PIPE SIZE AND INVERT ELEVATIONS IN PROFILE
 DATE 7-30-92
 APPROVED: *[Signature]*
 DEPARTMENT OF PUBLIC WORKS



NOTE: NUMBERS IN CIRCLES INDICATE PAGE NUMBERS

INDEX MAP
 P.C. NO. 11056, TR. NO. 45933
 SCALE: 1" = 800'
 THOMAS GUIDE NO. 123 F7

REVISION NO. 2
 1. P.C. 4 CURVATURE 4" H.L.S. SERVING LOTS 1 & 2 TO BE SERVED BY EXIST. P.C. 10853 ON PAGE 14.
 DATE 7-31-92
 APPROVED: *[Signature]*
 DEPT. OF PUBLIC WORKS

PRIVATE ENGINEER NOTICE TO CONTRACTOR

THE EXISTENCE AND LOCATION OF ANY UNDERGROUND UTILITY PIPES OR STRUCTURES SHOWN ON THESE PLANS ARE OBTAINED BY A SEARCH OF THE AVAILABLE RECORDS TO THE BEST OF OUR KNOWLEDGE. THERE ARE NO EXISTING UTILITIES EXCEPT AS SHOWN ON THIS MAP. THE CONTRACTOR IS REQUIRED TO TAKE DUE PRECAUTIONARY MEASURES TO PROTECT THE UTILITY LINES AND ANY OTHER LINES NOT OF RECORD OR NOT SHOWN ON THIS DRAWING. PRIOR TO EXCAVATION THE CONTRACTOR SHALL CALL TOLL FREE 800-482-4333 TO VERIFY THE UNDERGROUND LOCATION OF GAS AND TELEPHONE LINES.

[Signature]
 R.C.E. No. 19220 EXP. 9-30-93 DATE 10-24-89

CONSTRUCTION NOTES:

- FULL COMPLIANCE WITH PART IV OF THE SPECIAL PROVISIONS IS REQUIRED FOR THE INSTALLATION OF A.B.S. COMPOSITE PIPE.
- MANHOLE WATER STOP BASKETS AND CLAMPS ARE REQUIRED FOR THE CONNECTION OF A.B.S. COMPOSITE PIPE TO MANHOLE STRUCTURES.
- A.B.S. SOLID WALL PIPE MUST BE USED FOR WYE AND HOUSE LATERAL CONNECTIONS TO A.B.S. COMPOSITE MAIN LINE SEWER PIPE.
- A.B.S. COMPOSITE PIPE SHALL BE BEDDED IN CONFORMANCE WITH THE TABLE IN SECTION B-3.1 PART IV OF SPECIAL PROVISIONS.
- THREE DEGREE DEFLECTION COUPLERS ARE REQUIRED FOR RADIUS OF CURVATURE LESS THAN 300 FEET WHEN USING 8" A.B.S. COMPOSITE PIPE IS USED.
- NO CONNECTIONS FOR DISPOSAL OF INDUSTRIAL WASTE IS ALLOWED IF A.B.S. COMPOSITE PIPE IS USED.
- SEWER LINE CURVATURE SHALL NOT BE ACHIEVED BY PULLING OF JOINTS OR REVELING PIPE ENDS WHEN USING PLASTIC PIPE INCLUDING A.B.S. COMPOSITE PIPE.
- ALL WYES AND/OR HOUSE LATERALS ARE TO BE LOCATED AT LEAST FIVE FEET APART AND WHEN POSSIBLE NOT CLOSER THAN FIVE FEET TO ANY MANHOLE.
- A.B.S. SOLID WALL PIPE IS NOT ACCEPTABLE FOR USE AS MAINLINE SEWER.
- ONLY WYE BRANCHES ARE TO BE USED FOR CONNECTION TO A.B.S. COMPOSITE MAINLINE SEWER PIPE.

LOTS 156 THRU 158 ARE OPEN SPACE RANCHO LOTS RESTRICTED TO NO CONSTRUCTION AND WILL NOT TO BE SERVED BY THIS SEWER P.C. 11056

LOT 5 IS SERVED FROM P.C. 10853

NO CONNECTION FOR THE DISPOSAL OF INDUSTRIAL WASTES SHALL BE MADE TO SEWERS SHOWN ON THESE DRAWINGS UNTIL A PERMIT FOR INDUSTRIAL WASTEWATER DISCHARGE HAS BEEN ISSUED BY THE SANITATION DISTRICTS FOR SAID CONNECTION.

BEFORE BREAKING INTO OR CONSTRUCTION ON A COUNTY SANITATION DISTRICT SEWER AND PRIOR TO FINAL ACCEPTANCE OF THE PROJECT, SANITATION DISTRICT INSPECTOR SHALL BE NOTIFIED BY PHONE (805) 266-4683 SO THAT REQUIRED INSPECTION CAN BE MADE.

GENERAL NOTES:

- ELEVATIONS ARE IN FEET ABOVE U.S.C. & G.S. SEA LEVEL DATUM OF 1929.
- NO REVISIONS SHALL BE MADE IN THESE PLANS WITHOUT THE APPROVAL OF THE DIRECTOR OF PUBLIC WORKS.
- NO REPRESENTATIVE OF THE DEPARTMENT OF PUBLIC WORKS WILL SURVEY OR LAY OUT ANY PORTION OF THE WORK.
- GRADING TO WHICH THIS IMPROVEMENT IS TO BE CONSTRUCTED ARE SHOWN ON PLANS AND PROFILES. GRADE POINTS FOR TOP OF CURB, CENTER LINE OF STREETS OR CENTER LINE OF ALLEYS ARE SHOWN BY CIRCLES ON PROFILES. AT ALL POINTS BETWEEN DESIGNATED POINTS THE GRADE SHALL BE ESTABLISHED SO AS TO FORM TO A STRAIGHT LINE GRADE BETWEEN SAID DESIGNATED POINTS.
- THE PRIVATE ENGINEER SHALL FURNISH THE DEPARTMENT OF PUBLIC WORKS WITH GRADE SHEETS AND STATIONING FOR ALL HOUSE LATERALS AND "D" OR "T" BRANCHES AND SHALL PROVIDE JAMES FOR THEM AT THEIR PROPER LOCATIONS WITH STATIONING PLAINLY MARKED. ALL HOUSE LATERALS SHALL BE CONSTRUCTED IN STRAIGHT LINES FROM THE MAINLINE SEWER EXCEPT AS SHOWN ON THE PLANS. HOUSE LATERALS FROM CHIMNEYS SHALL NOT HAVE AN ANGLE OF LESS THAN 45° WITH THE MAINLINE SEWER. ANY CHANGE IN ALIGNMENT SHALL BE REQUESTED IN WRITING BY THE PRIVATE ENGINEER.
- THE PRIVATE ENGINEER SHALL FURNISH THE HOUSE LATERAL DEPTH AT THE PROPERTY LINE BELOW THE TOP OF CURB ELEVATION FOR EACH HOUSE LATERAL ON THE GRADE SHEET.
- BEFORE WORK CAN BE STARTED THE CONTRACTOR MUST OBTAIN A PERMIT TO EXCAVATE IN COUNTY STREETS FROM THE ENGINEERING DIVISION OF THE LOS ANGELES DEPARTMENT OF PUBLIC WORKS. PERMIT OFFICE NO. _____ AND PAY A FEE TO THE DIRECTOR OF PUBLIC WORKS 900 S. FREMONT AVE., ALHAMBRA, CA 91803 TO COVER THE COST OF CONSTRUCTION INSPECTION AND RECORD PLANS.
- IF WORK IS TO BE DONE ON A STATE HIGHWAY A PERMIT MUST BE OBTAINED FROM THE STATE OF CALIFORNIA, DIVISION OF HIGHWAYS, 120 SOUTH SPRING STREET, LOS ANGELES, CALIFORNIA.
- APPROVAL OF THIS PLAN BY THE COUNTY OF LOS ANGELES DOES NOT CONSTITUTE A REPRESENTATION AS TO THE ACCURACY OF THE LOCATION OF OR THE EXISTENCE OR NON-EXISTENCE OF ANY UNDERGROUND UTILITY PIPE, OR STRUCTURE WITHIN THE LIMITS OF THIS PROJECT. THIS NOTE APPLIES TO ALL PAGES.
- REFER TO SECTION 7.10.4.1 OF THE STANDARD SPECIFICATIONS REGARDING SAFETY ORDERS.
- IN ORDER TO OBTAIN THE REQUIRED SEWER CONSTRUCTION PERMIT, THE CONTRACTOR SHALL OBTAIN AND FILE WITH THE DEPARTMENT OF PUBLIC WORKS CORPUS PERMIT TO EXCAVATE IN COUNTY STREETS FROM THE RECORDS DIVISION OF THE DEPARTMENT OF PUBLIC WORKS. A PERMIT FOR EXCAVATION AND TRENCHES FROM THE STATE OF CALIFORNIA, A DIVISION OF INDUSTRIAL SAFETY AND A CERTIFICATE OF WORKERS COMPENSATION INSURANCE WITH THE DEPARTMENT OF PUBLIC WORKS, 900 S. FREMONT AVE., ALHAMBRA, CA 91803, MUST BE OBTAINED PRIOR TO THE START OF CONSTRUCTION.

CONSTRUCTION NOTES:

- WORK SHALL BE CONSTRUCTED ACCORDING TO THE STANDARD SPECIFICATIONS FOR PUBLIC WORKS CONSTRUCTION (1988 EDITION) AND 1992 EDITION.
- THE CONTRACTOR SHALL NOTIFY THE CONSTRUCTION DIVISION BY TELEPHONE (805) 253-7275 AT LEAST TWENTY-FOUR HOURS BEFORE START OF WORK UNDER THIS CONTRACT.
- HOUSE LATERALS TO BE CONSTRUCTED WITH CONNECTIONS TO PROPERTY LINE 6 FEET BELOW CURB GRADE EXCEPT AS NOTED.
- WYE OR TEE BRANCHES MAY BE USED FOR CONNECTIONS TO MAINLINE SEWERS EXCEPT AS NOTED.
- ALL STRUCTURES SHALL BE 8" MINIMUM MANHOLE RINGS OR PRECAST CONCRETE MANHOLES PER S-36 EXCEPT AS NOTED.
- PROVIDE STAKES ON THE PROPERTY LINE OR PROPERTY LINES PRODUCED AT RIGHT ANGLES TO THE CENTER LINE OF EACH MANHOLE.
- MANHOLE TOPS IN UNIMPROVED RIGHTS OF WAY TO BE SIX INCHES ABOVE FINISHED GRADE.
- WYTHED TYPED PIPE JOINTS SHALL BE TYPE "D" OR "T" PER STANDARD SPECIFICATIONS SECTION 308-2.
- IF A POWER POLE IS WITHIN THREE FEET OF THE SEWER, THE SEWER SHALL BE ENCASED PER S-33 CASE II TWO FEET ON EACH SIDE FROM THE POINT OF INTERFERENCE.
- IF DURING THE COURSE OF CONSTRUCTION IT IS DETERMINED THAT THERE IS LESS THAN FOUR FEET COVER OVER THE TOP OF A MAINLINE OR HOUSE LATERAL V.C.P. SEWER WHICH IS NOT INDICATED ON THE PLANS, THE PIPE SHALL BE ENCASED PER S-33 CASE II UNLESS OTHERWISE APPROVED BY THE DIRECTOR OF PUBLIC WORKS.
- ALL JOINTS BETWEEN CAST IRON PIPE AND WYTHED CLAY PIPE SHALL BE MADE WITH A RUBBER SLEEVE JOINT, TYPE "C" OR "D" WITH BUSINESS IF NECESSARY PER STANDARD SPECIFICATIONS SECTION 308-2.
- SEWERS TO BE TESTED FOR LEAKAGE PER SECTION 308-1.4 OF THE STANDARD SPECIFICATIONS AND SPECIAL PROVISIONS.
- RESURFACE ALL TRENCHES WITHIN PAVED AREAS TO MEET LOS ANGELES COUNTY PUBLIC WORKS OR CALIFORNIA STATE HIGHWAY REQUIREMENTS IN ACCORDANCE WITH PERMITS.
- FULL COMPLIANCE WITH SECTION 308-1.3.4 OF THE STD. SPECIFICATIONS WILL BE REQUIRED FOR BACKFILL IN STREETS. CERTIFICATION OF BACKFILL CONSTRUCTION AND SAND EQUIVALENTS BY A QUALIFIED REGISTERED TESTING LABORATORY SHALL BE PROVIDED BY THE PERMITTEE PRIOR TO THE ISSUANCE OF A CERTIFICATE OF PARTIAL ACCEPTANCE.
- SPECIAL BACKFILL IN EASEMENT CONSTRUCTION IN BACKFILL TRENCH AND REPLACE OTHER EARTH SO AS TO ACHIEVE THE NATURAL OR FINISHED GRADES AND SLOPES SHOWN ON THE DRAWING. APPROVED FOR THIS DEVELOPMENT BY THE LAND DEPARTMENT METHOD OF TESTS SHALL BE USED FOR THE DETERMINATION OF ACCEPTABLE CERTIFICATION OF SUCH CONSTRUCTION SHALL BE SUBMITTED TO THE CONSTRUCTION DIVISION, PUBLIC WORKS DEPARTMENT.
- ALL V.C.P. PIPES SHALL HAVE MECHANICAL COMPRESSION JOINT.

PROFILE, ALIGNMENT AND GRADE OF
SANITARY SEWERS
 TO BE CONSTRUCTED IN
 TRACT No. 45933

PRIVATE CONTRACT NO. 11056
 INDEX 1513
 7 SHEETS, 13 PAGES

SCALE: VERT. 1" = 8'
 HORIZ. 1" = 40'
 DATE: OCTOBER, 1989
 PREPARED IN THE OFFICES OF
SIKAND ENGINEERING ASSOCIATES
 7320 BURNING BULLHEAD
 VAN NUYS, CALIFORNIA 91411 (818) 781-8350
 BY: *[Signature]*
 REG. C.E. NO. 19220

THE FOLLOWING LATEST REVISED STANDARD PLANS ON FILE IN THE OFFICE OF THE DEPARTMENT OF PUBLIC WORKS SHALL APPLY IN THE CONSTRUCTION OF THIS PROJECT:

LEGEND	S-1
MINIMUM PUBLIC SAFETY REQUIREMENTS	S-2
BRICK SEWER MANHOLE	S-3
STANDARD MANHOLE STEP	S-17
BEDDING FOR SEWER PIPE	S-21
CRADLING AND ENCASEMENT	S-23
WYE OR TEE SUPPORT	S-26
ALLOWABLE TRENCH WIDTHS	S-29
LOCKING MANHOLE FRAME AND COVER	S-35
NON-REINFORCED PRECAST CONCRETE SEWER MANHOLE	S-36
SPECIAL HOUSE LATERALS	S-37
CHIMNEY	S-37

COUNTY OF LOS ANGELES, CALIFORNIA
 THOMAS A. TIDEMANSON
 DIRECTOR OF PUBLIC WORKS

CHARLES W. CARRY
 CHIEF ENGINEER
 CO. SAN. DIST. NO. 25

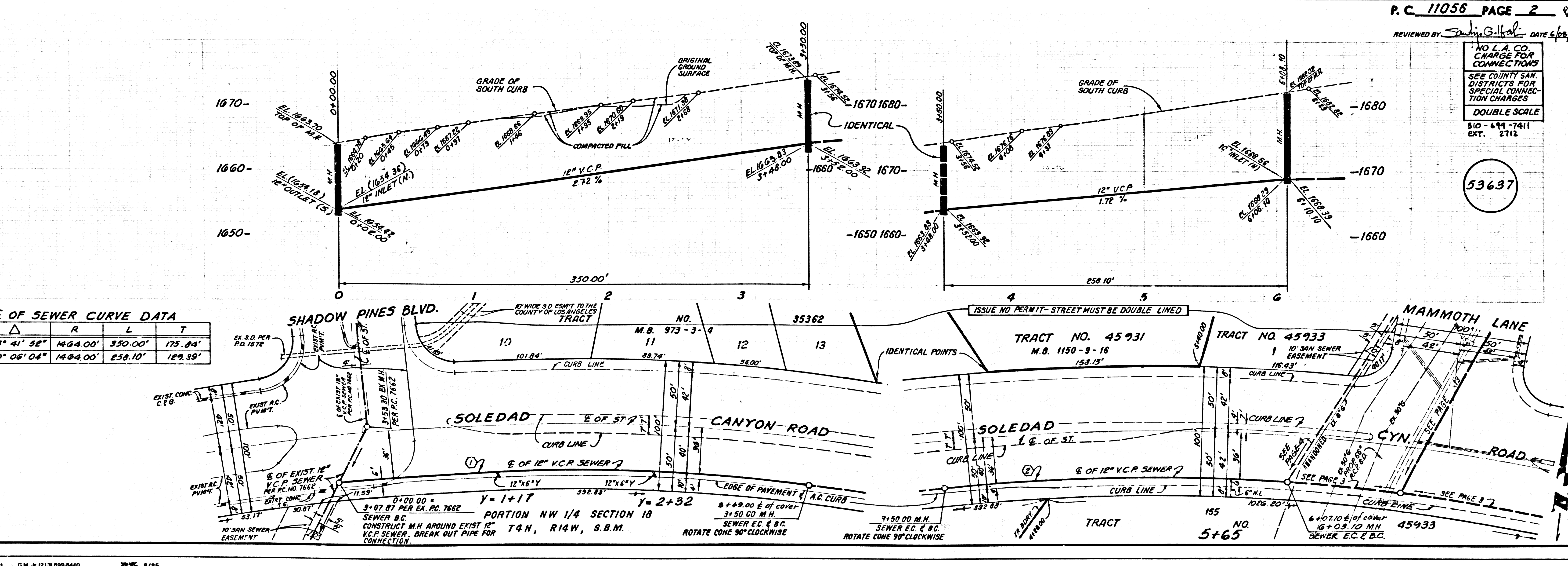
APPROVED: *[Signature]*
 DATE: 10/24/89

CHECKED: *[Signature]*
 DATE: 10/24/89

REG. C.E. NO. 20713

SANTA CLARITA BLDG. DIST. 82

NEWHALL COUNTY WATER DISTRICT
 APPROVED BY: *[Signature]*
 DATE: 4-20-92



E OF SEWER CURVE DATA

Δ	R	L	T
1 13° 41' 32"	1464.00'	350.00'	175.84'
2 10° 06' 04"	1484.00'	258.10'	129.39'

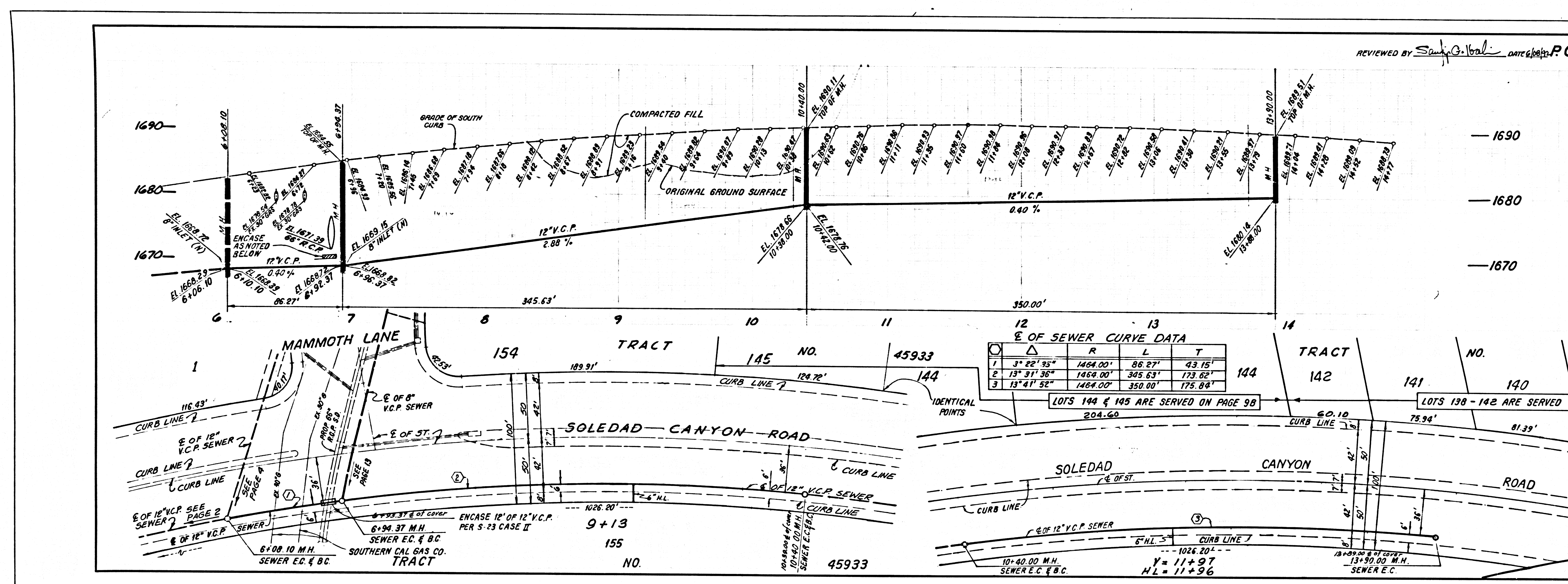
L.A. COUNTY SEWER SHEET NO. 1 G.M. 1213 899-8410 255 8/85

SCALE

16X

20X

53638



REVIEWED BY *Sandy G. Neal* DATE *4/28/92* P.C. 11056 PAGE 3

NO L.A. CO. CHARGE FOR CONNECTIONS
 SEE COUNTY SAN. DISTRICTS FOR SPECIAL CONNECTION CHARGES
 DOUBLE SCALE
 310 - 649 - 7411
 EXT. 2712

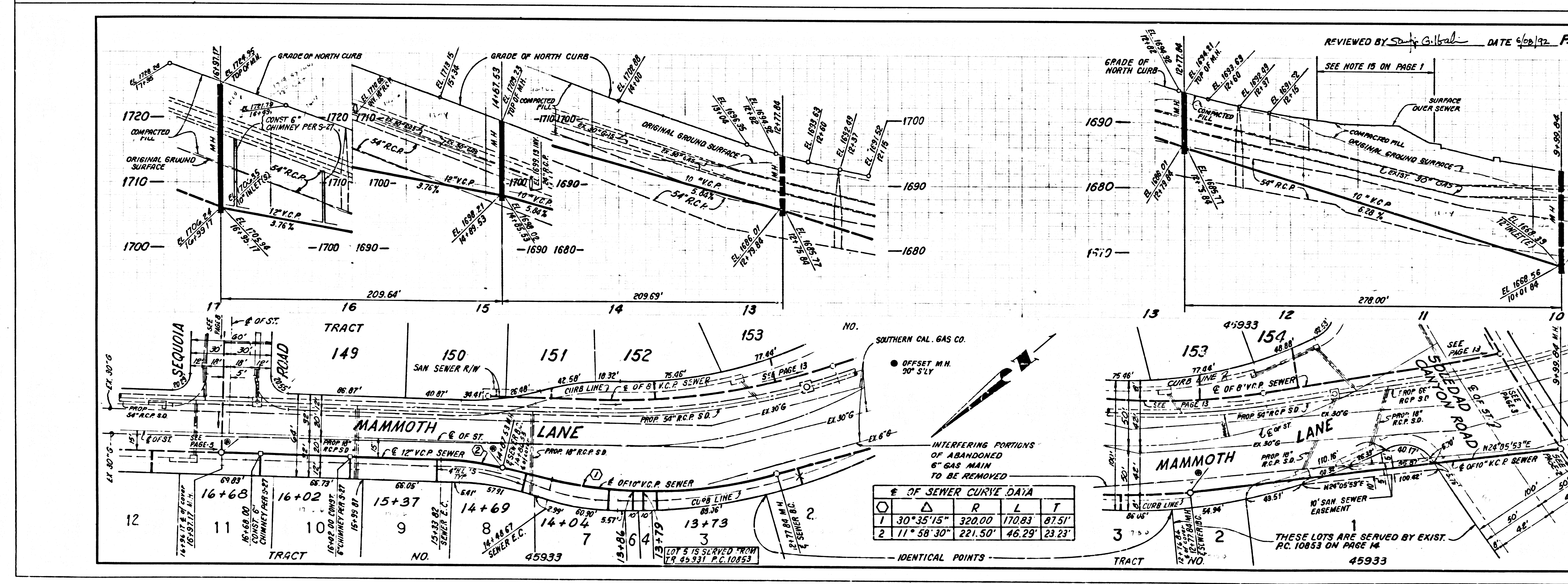
SEWER CURVE DATA

NO.	Δ	R	L	T
1	3° 22' 55"	1464.00'	86.27'	43.15'
2	13° 31' 56"	1464.00'	345.63'	173.62'
3	13° 41' 52"	1464.00'	350.00'	175.84'

LOTS 144 & 145 ARE SERVED ON PAGE 98
 204.60'

LOTS 139 - 142 ARE SERVED ON PAGE 8

53638



REVIEWED BY *Sandy G. Neal* DATE *4/28/92* P.C. 11056 PAGE 4

NO L.A. CO. CHARGE FOR CONNECTIONS
 SEE COUNTY SAN. DISTRICTS FOR SPECIAL CONNECTION CHARGES
 DOUBLE SCALE
 310 - 649 - 7411
 EXT. 2712

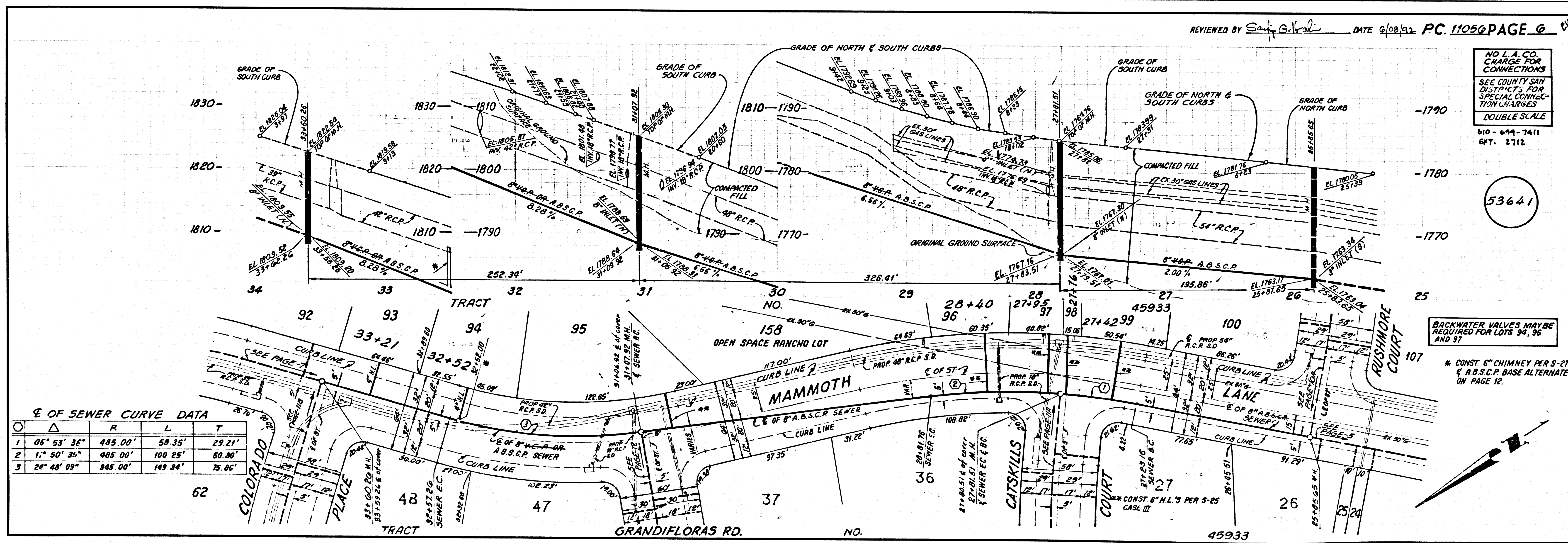
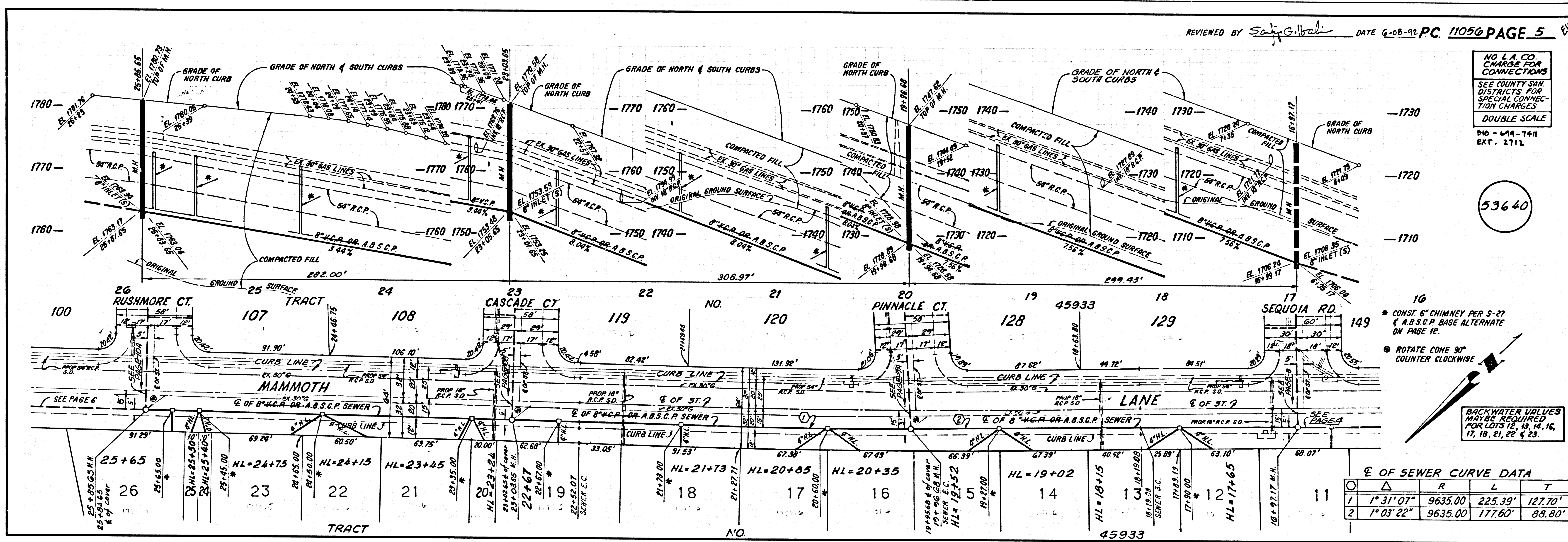
SEWER CURVE DATA

NO.	Δ	R	L	T
1	30° 35' 15"	320.00'	170.83'	87.51'
2	17° 58' 30"	221.50'	46.29'	23.23'

53639

BACKWATER VALVES MAY BE REQUIRED FOR LOTS 9 & 10

THESE LOTS ARE SERVED BY EXIST. P.C. 10853 ON PAGE 14



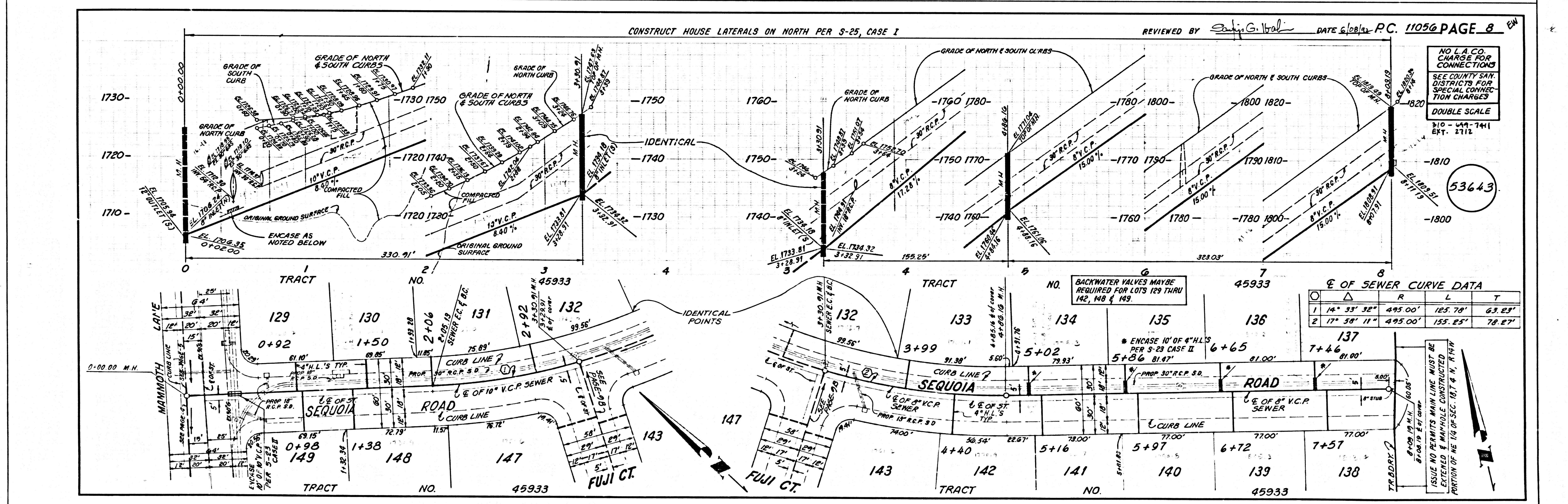
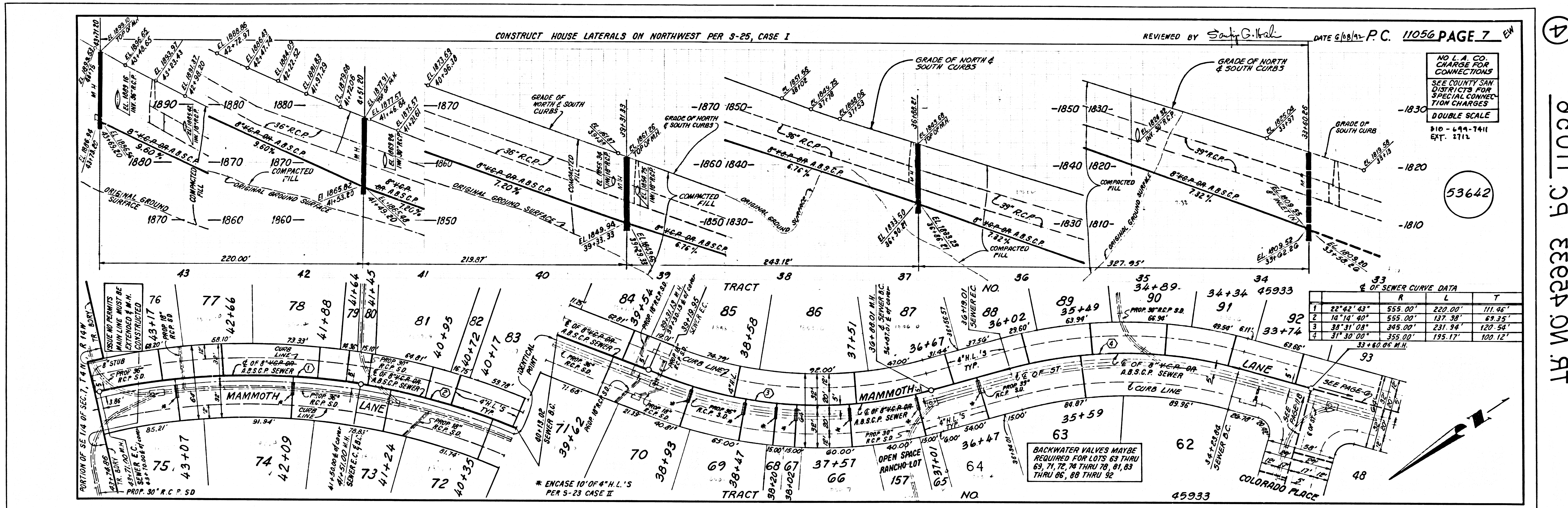
3
3011.09
E3924 ON P.1

SCALE

15X

D
20

20X



17

ROLL 09 E3224 ON RT

D 20

C

B

A

SCALE

A

B 16X

C

D 20X

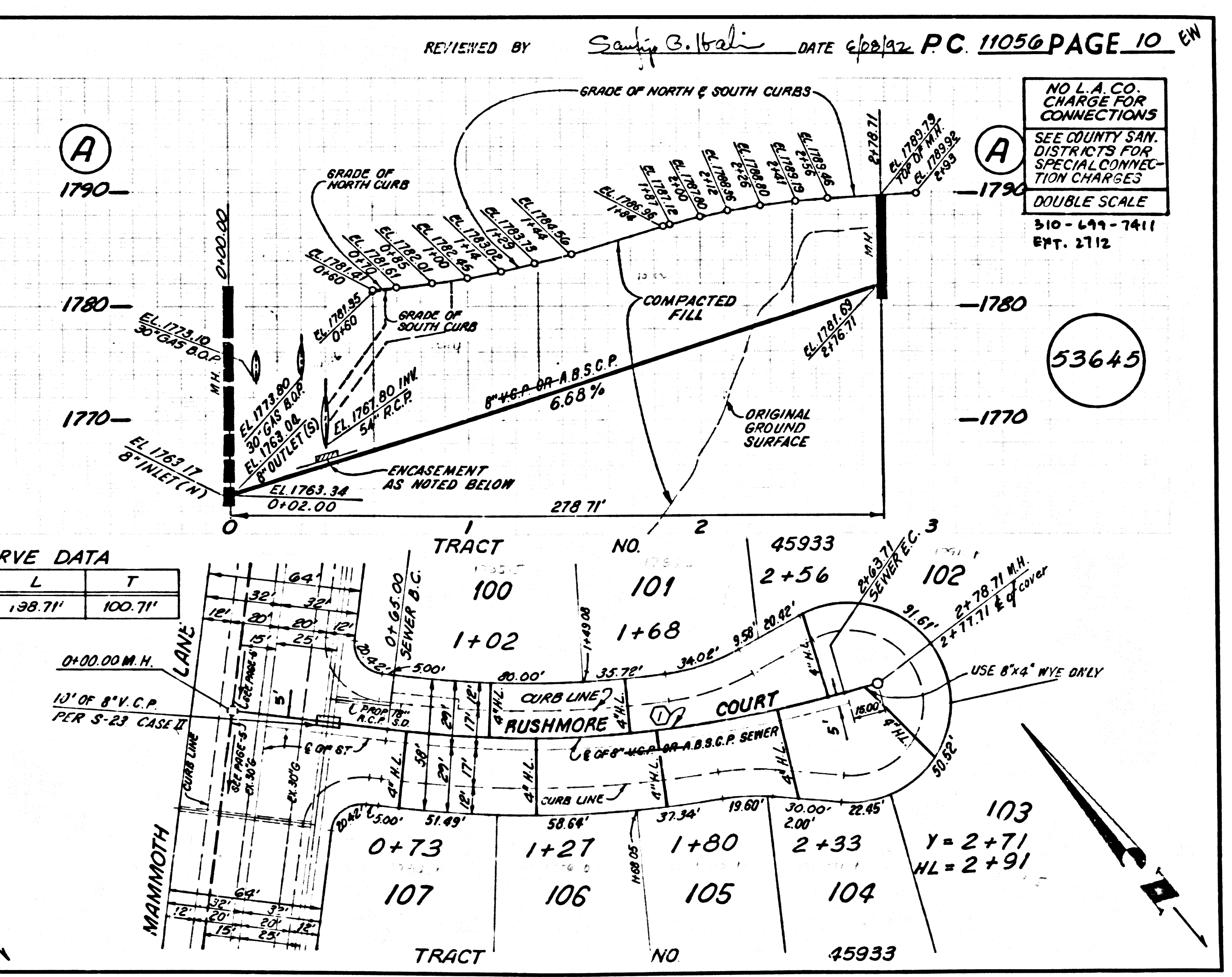
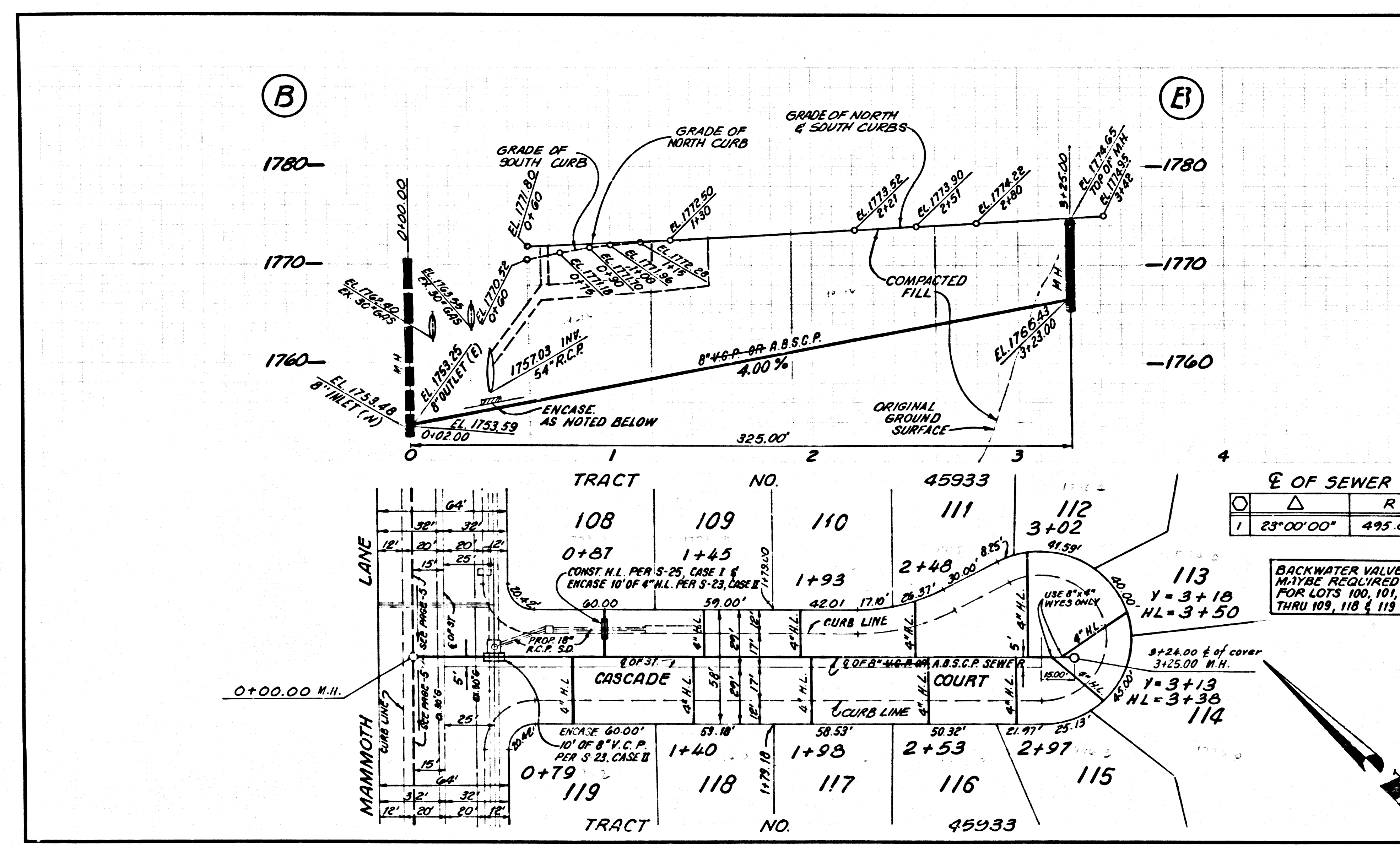
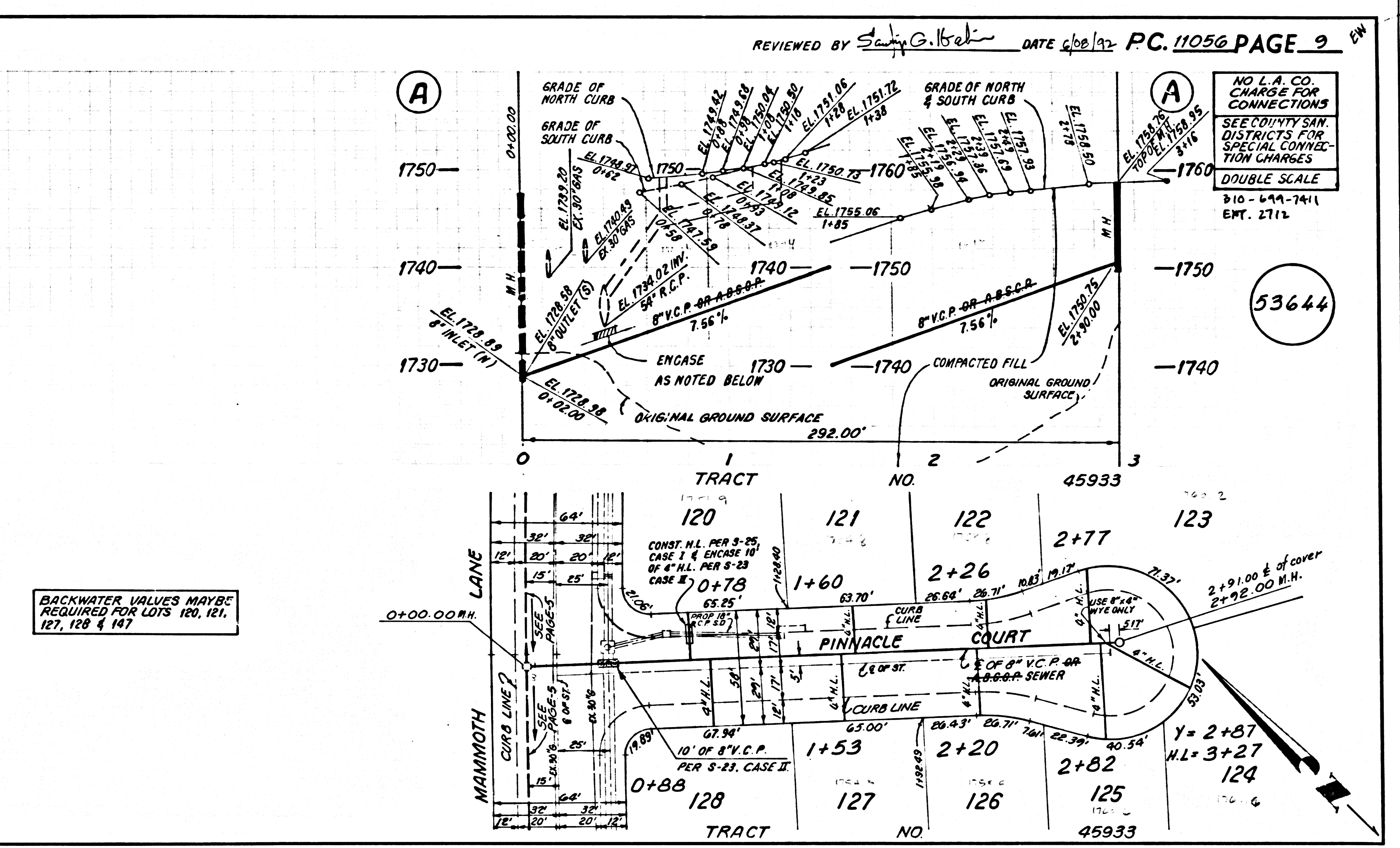
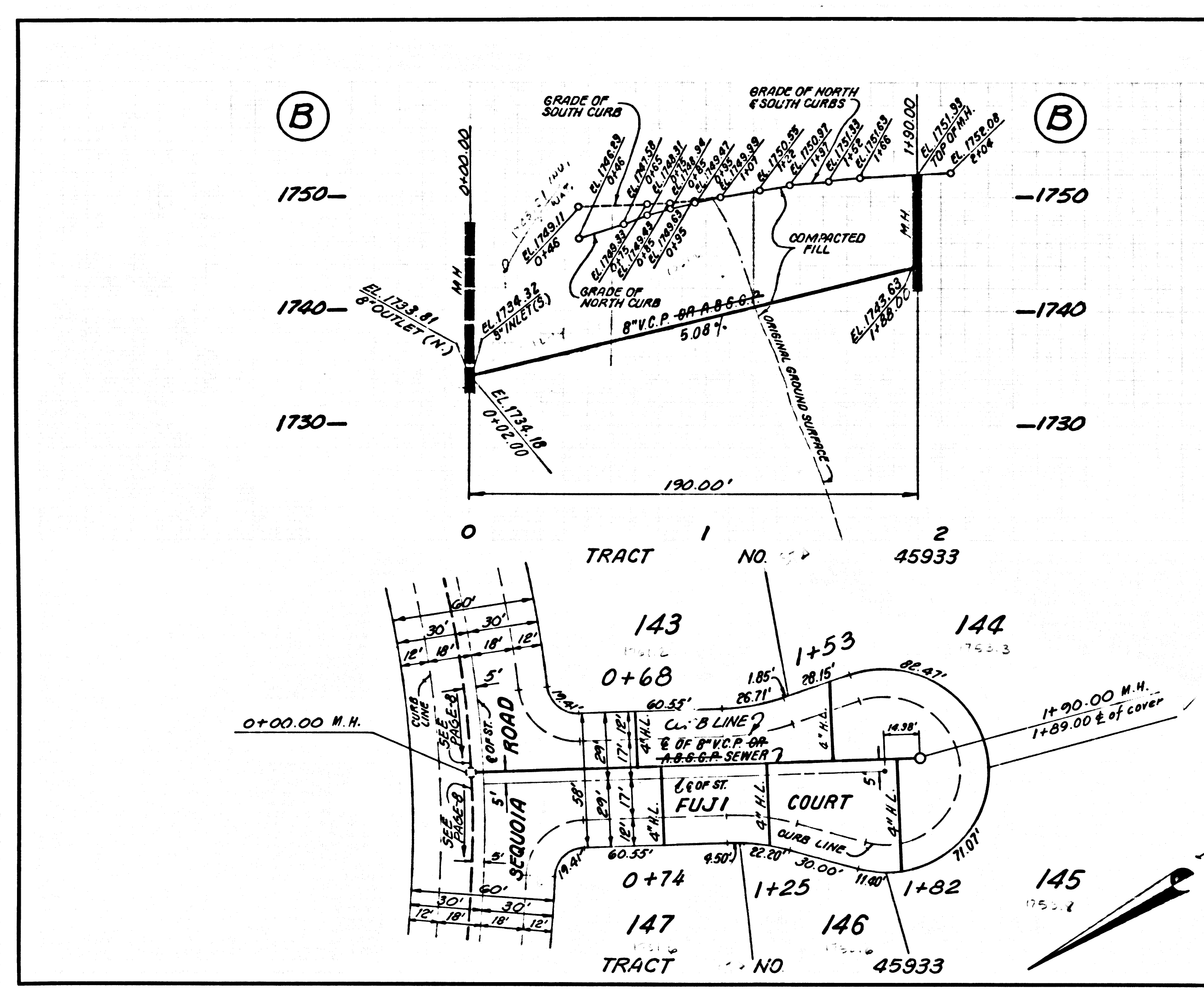
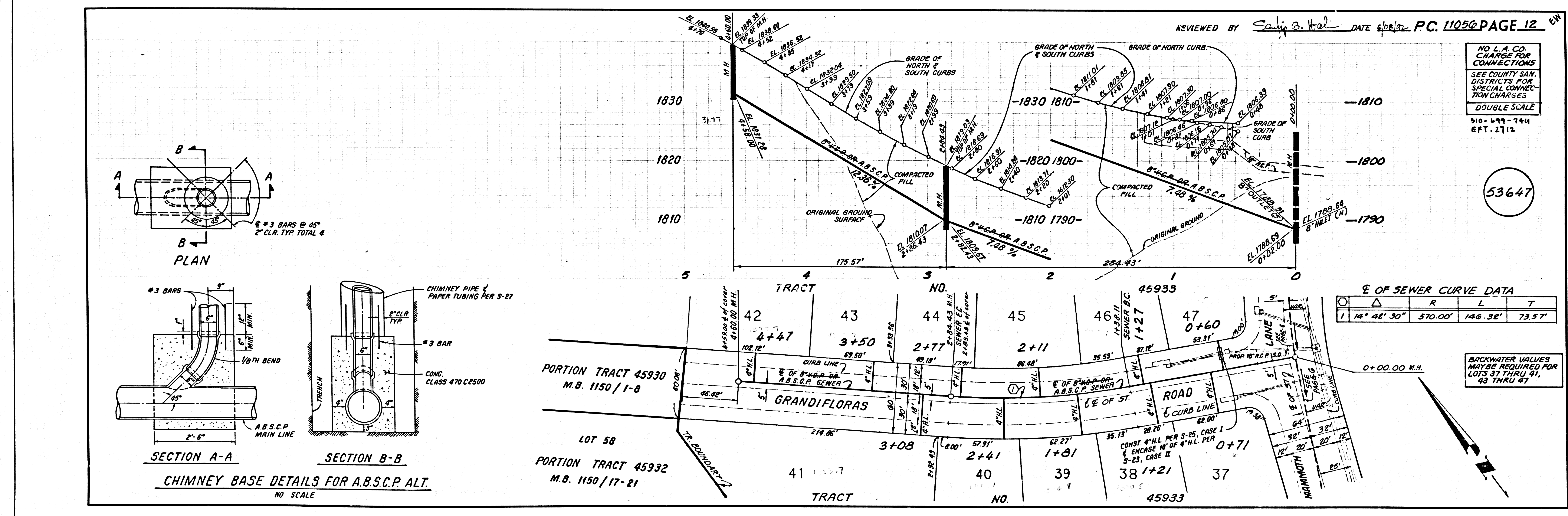
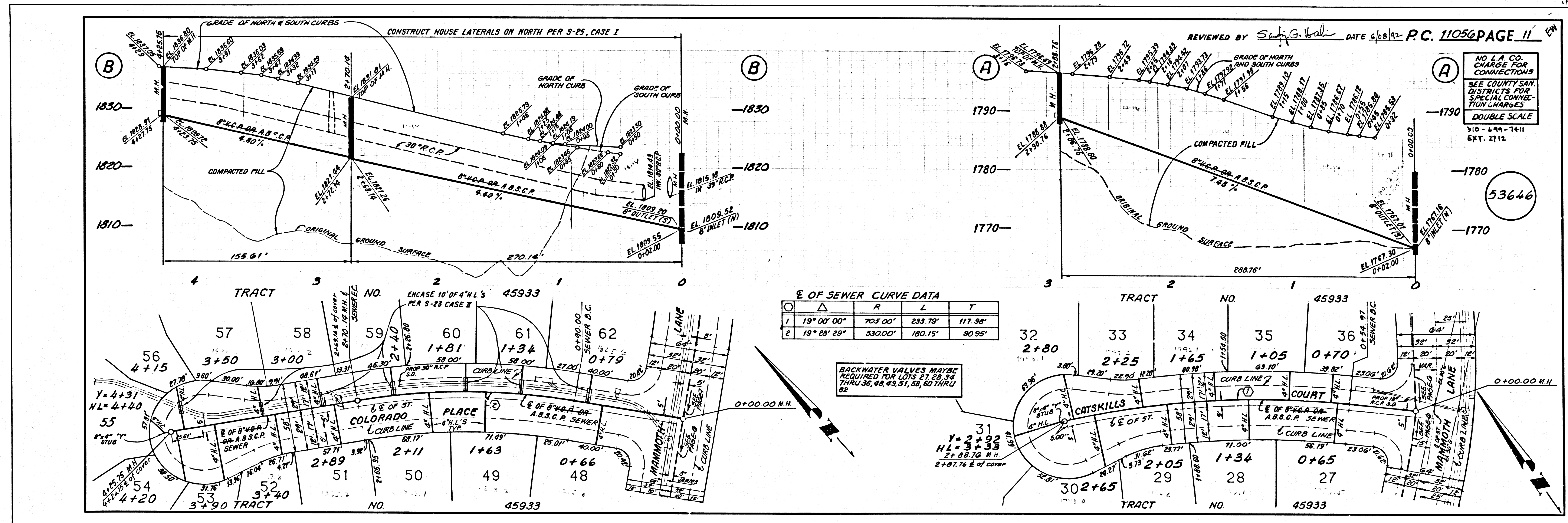


TABLE OF SEWER CURVE DATA

NO.	R	L	T
1	23°00'00"	495.00'	138.71'

2
 03111 CA 33024 ON RT

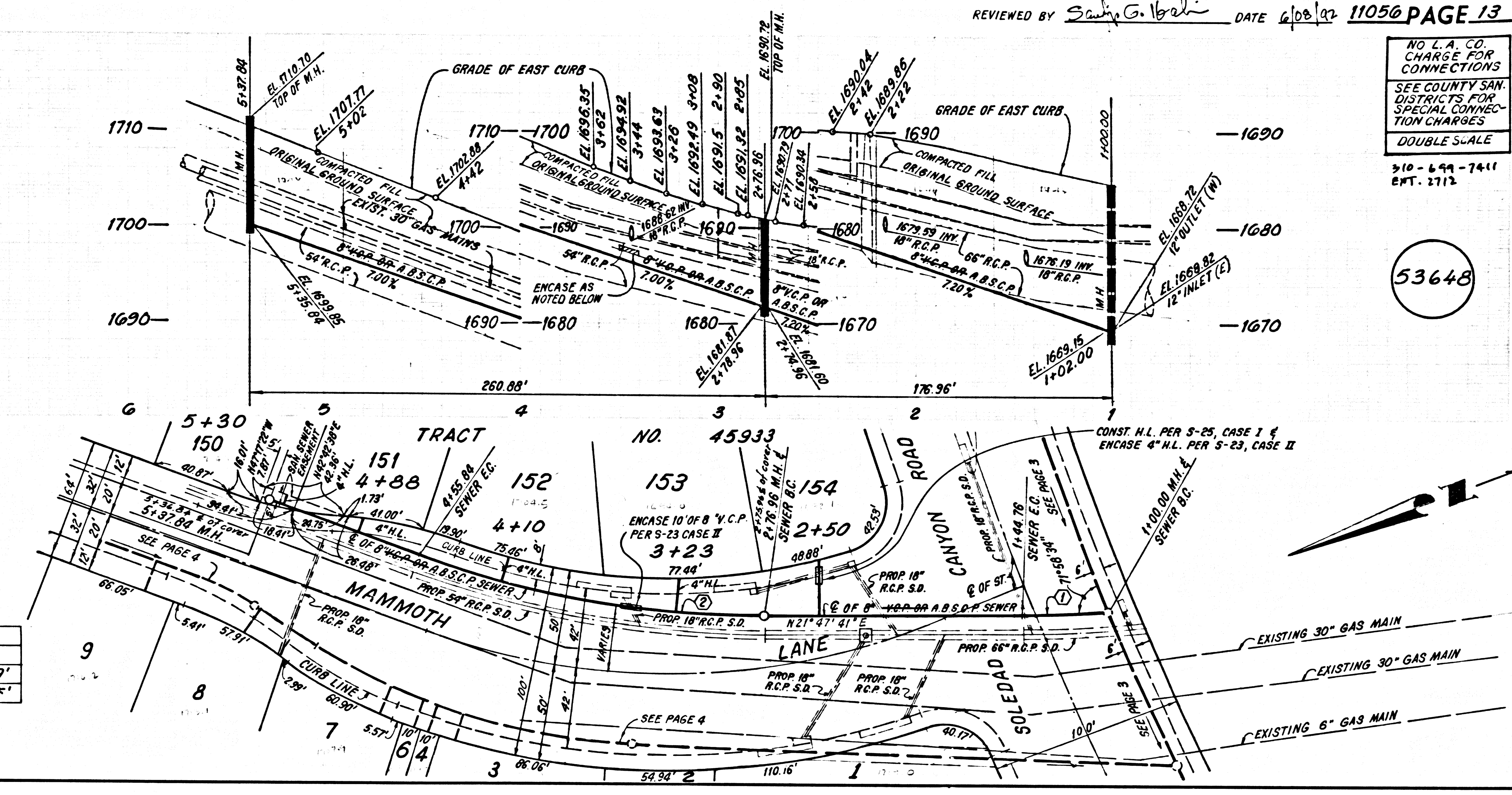


2011 CA 33823 ON PT
 53646
 53647

REVIEWED BY *Sandy G. V. [Signature]* DATE 4/28/22 11056 PAGE 13 EN

NO L.A. CO. CHARGE FOR CONNECTIONS
SEE COUNTY SAN DISTRICTS FOR SPECIAL CONNECTION CHARGES
DOUBLE SCALE
310-699-7411
EXT. 2712

53648



BACKWATER VALVES MAYBE REQUIRED FOR LOTS 151, 152 & 153

E OF SEWER CURVE DATA				
Q	Δ	R	L	T
1	3° 42' 59"	690.00'	44.76'	22.39'
2	20° 54' 58"	490.00'	178.88'	90.45'

PAGE

15' 0" 4233 BC 11028

