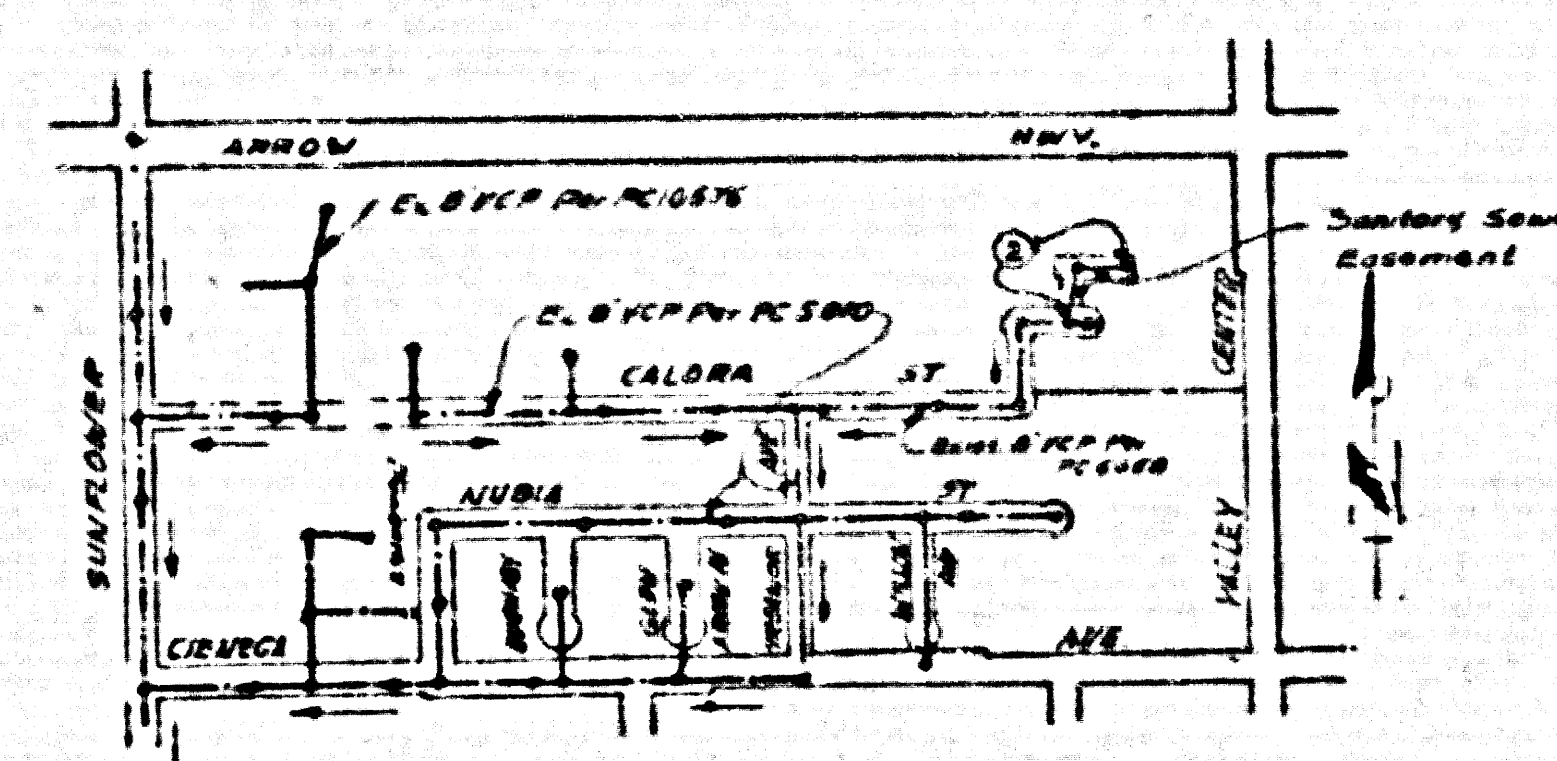


B.M. CG2033 ELEV. 792.25
 CO. SUR. MON. IN WELL 604 LINT.
 Valley Center Ave. & Calora
 SAN DIMAS QUAD. 1990

PRIVATE ENGINEER'S NOTICE TO CONTRACTORS

THE EXISTING UTILITIES OF ANY UNDERGROUND PROPERTY ARE SHOWN ON THIS PLAN AS PART OF A SURVEY OF THE TRACT. THE CONTRACTOR SHALL BE RESPONSIBLE FOR THE LOCATION AND DEPTH OF ALL UTILITIES. THE CONTRACTOR SHALL BE RESPONSIBLE FOR THE LOCATION AND DEPTH OF ALL UTILITIES. THE CONTRACTOR SHALL BE RESPONSIBLE FOR THE LOCATION AND DEPTH OF ALL UTILITIES.

By: *Edmund F. Decker* P.E. 222718
 REGISTERED ENGINEER



INDEX MAP
 SCALE: 1"=100'
 PC 11058 FROM 89, D-3
 SEWER EASEMENT ON CALORA ST.

NOTE: NUMBER IN CIRCLE INDICATES PAGE NUMBER.

NO CONNECTION FOR THE DISPOSAL OF INDUSTRIAL WASTES SHALL BE MADE TO SEWERS SHOWN ON THESE DRAWINGS UNLESS A PERMIT FOR INDUSTRIAL WASTEWATER DISCHARGE HAS BEEN ISSUED BY THE SANITATION DISTRICTS FOR SAID CONNECTION.

BEFORE BREAKING INTO OR CONSTRUCTION ON A COUNTY SANITATION DISTRICT SEWER AND PRIOR TO FINAL ACCEPTANCE OF THE PROJECT, SANITATION DISTRICT INSPECTOR SHALL BE NOTIFIED BY PHONE (818) 362-8605 SO THAT REQUIRED INSPECTION CAN BE MADE.

GENERAL NOTES:

1. UTILITIES ARE IN FEET ABOVE U.S.C. & G.S. SEA LEVEL UNLESS NOTED.
2. NO REVISIONS SHALL BE MADE TO THESE PLANS WITHOUT THE APPROVAL OF THE ENGINEER.
3. NO REVISIONS SHALL BE MADE TO THESE PLANS WITHOUT THE APPROVAL OF THE ENGINEER.
4. CONTRACTOR SHALL BE RESPONSIBLE FOR THE LOCATION AND DEPTH OF ALL UTILITIES.
5. CONTRACTOR SHALL BE RESPONSIBLE FOR THE LOCATION AND DEPTH OF ALL UTILITIES.
6. CONTRACTOR SHALL BE RESPONSIBLE FOR THE LOCATION AND DEPTH OF ALL UTILITIES.
7. CONTRACTOR SHALL BE RESPONSIBLE FOR THE LOCATION AND DEPTH OF ALL UTILITIES.
8. CONTRACTOR SHALL BE RESPONSIBLE FOR THE LOCATION AND DEPTH OF ALL UTILITIES.
9. CONTRACTOR SHALL BE RESPONSIBLE FOR THE LOCATION AND DEPTH OF ALL UTILITIES.
10. CONTRACTOR SHALL BE RESPONSIBLE FOR THE LOCATION AND DEPTH OF ALL UTILITIES.
11. CONTRACTOR SHALL BE RESPONSIBLE FOR THE LOCATION AND DEPTH OF ALL UTILITIES.
12. CONTRACTOR SHALL BE RESPONSIBLE FOR THE LOCATION AND DEPTH OF ALL UTILITIES.
13. CONTRACTOR SHALL BE RESPONSIBLE FOR THE LOCATION AND DEPTH OF ALL UTILITIES.
14. CONTRACTOR SHALL BE RESPONSIBLE FOR THE LOCATION AND DEPTH OF ALL UTILITIES.
15. CONTRACTOR SHALL BE RESPONSIBLE FOR THE LOCATION AND DEPTH OF ALL UTILITIES.
16. CONTRACTOR SHALL BE RESPONSIBLE FOR THE LOCATION AND DEPTH OF ALL UTILITIES.
17. CONTRACTOR SHALL BE RESPONSIBLE FOR THE LOCATION AND DEPTH OF ALL UTILITIES.
18. CONTRACTOR SHALL BE RESPONSIBLE FOR THE LOCATION AND DEPTH OF ALL UTILITIES.
19. CONTRACTOR SHALL BE RESPONSIBLE FOR THE LOCATION AND DEPTH OF ALL UTILITIES.
20. CONTRACTOR SHALL BE RESPONSIBLE FOR THE LOCATION AND DEPTH OF ALL UTILITIES.

CONSTRUCTION NOTES:

1. WORK SHALL BE CONDUCTED ACCORDING TO THE STANDARD SPECIFICATIONS FOR PUBLIC WORKS CONSTRUCTION.
2. THE CONTRACTOR SHALL BE RESPONSIBLE FOR THE LOCATION AND DEPTH OF ALL UTILITIES.
3. HOUSE LATERALS SHALL BE CONSTRUCTED WITH INVERTS AT PROPERTY LINE 8 FEET BY 8 INCH CLAY PIPE EXCEPT AS NOTED.
4. ALL JOINTS SHALL BE MADE WITH APPROVED FITTINGS.
5. ALL JOINTS SHALL BE MADE WITH APPROVED FITTINGS.
6. ALL JOINTS SHALL BE MADE WITH APPROVED FITTINGS.
7. ALL JOINTS SHALL BE MADE WITH APPROVED FITTINGS.
8. ALL JOINTS SHALL BE MADE WITH APPROVED FITTINGS.
9. ALL JOINTS SHALL BE MADE WITH APPROVED FITTINGS.
10. ALL JOINTS SHALL BE MADE WITH APPROVED FITTINGS.
11. ALL JOINTS SHALL BE MADE WITH APPROVED FITTINGS.
12. ALL JOINTS SHALL BE MADE WITH APPROVED FITTINGS.
13. ALL JOINTS SHALL BE MADE WITH APPROVED FITTINGS.
14. ALL JOINTS SHALL BE MADE WITH APPROVED FITTINGS.
15. ALL JOINTS SHALL BE MADE WITH APPROVED FITTINGS.
16. ALL JOINTS SHALL BE MADE WITH APPROVED FITTINGS.
17. ALL JOINTS SHALL BE MADE WITH APPROVED FITTINGS.
18. ALL JOINTS SHALL BE MADE WITH APPROVED FITTINGS.
19. ALL JOINTS SHALL BE MADE WITH APPROVED FITTINGS.
20. ALL JOINTS SHALL BE MADE WITH APPROVED FITTINGS.

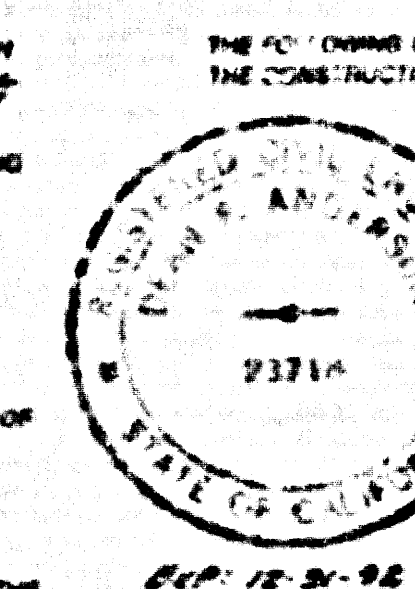
SANITARY SEWERS
 TO BE CONSTRUCTED IN
 EASEMENT N/O CALORA ST.

PRIVATE CONTRACT NO. 11058
 INDEX U-93

SHEET 1 OF 2 PAGES
 SCALE: 1"=100' HORIZ. 1"=10' VERT.
 DECEMBER 9, 1989

PREPARED IN THE OFFICES OF
 DEAN R. ANDERSON
 8711 S. BAYVIEW AVE.
 FORT LAUDERDALE, FL 33408
 BY: *Edmund F. Decker* P.E. 222718

53438



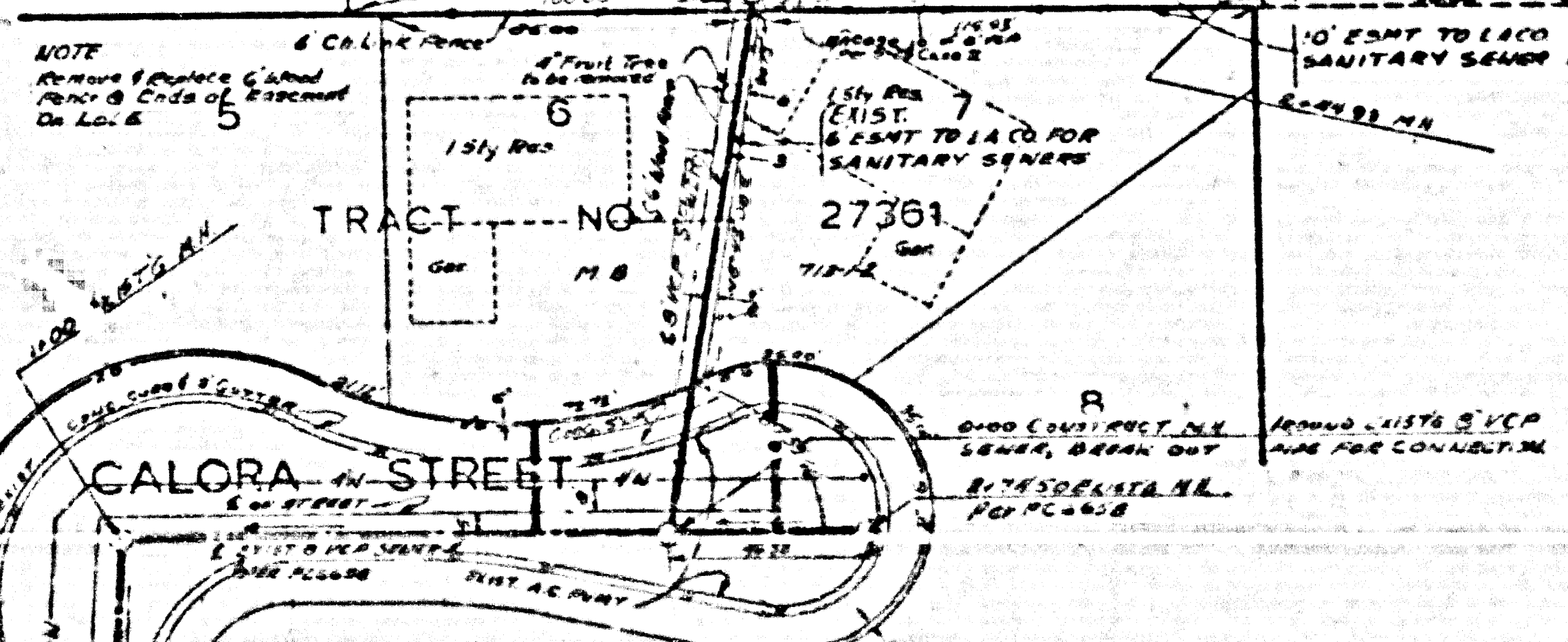
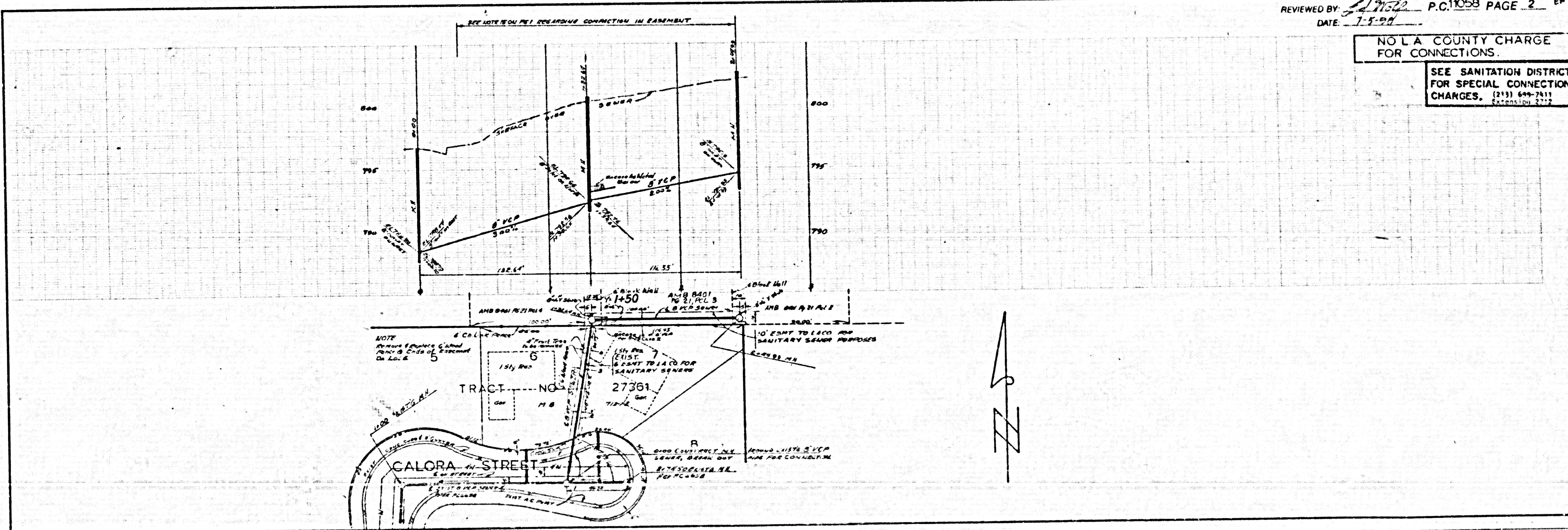
THE FOLLOWING LATEST REVISED STANDARD PLANS ON FILE IN THE OFFICE OF THE DEPARTMENT OF PUBLIC WORKS SHALL APPLY TO THE CONSTRUCTION OF THIS PROJECT:

LEAKAGE	5-1
MINIMUM PUBLIC SAFETY REQUIREMENTS	5-2
BRICK MANHOLE	5-3
STANDARD MANHOLE 8" TOP	5-4
WOODING FOR SEWERS PIPE	5-5
CHALKING AND ENCLOSURE	5-6
PIPE OR TEE SUPPORT	5-7
ALLOWABLE TRENCH WIDTHS	5-8
LOCKING MANHOLE HOUSING AND COVER	5-9
NON-REINFORCED PRECAST CONCRETE MANHOLE	5-10

COUNTY OF LOS ANGELES, CALIFORNIA
 THOMAS A. TIDEMANSON, DIRECTOR
 DEPARTMENT OF PUBLIC WORKS
 APPROVED: *Thomas Tidemanson* 7-5-90
 APPROVED: *Charles W. Barry* 7-5-90
 CHECKED: *Sandy G. Gilman* 7-5-90
 SAN DIMAS B.D.Q. DIST. 10

REVIEWED BY: *Edmund F. Decker* P.C. 11058 PAGE 2
 DATE: 7-5-90

NO L.A. COUNTY CHARGE FOR CONNECTIONS.
 SEE SANITATION DISTRICT FOR SPECIAL CONNECTION CHARGES.



NOTE: REFER TO DRAWING 11058-1 FOR CONNECTION TO EXISTING SEWER LINE IN EASEMENT.

NOTE: REFER TO DRAWING 11058-1 FOR CONNECTION TO EXISTING SEWER LINE IN EASEMENT.

NOTE: REFER TO DRAWING 11058-1 FOR CONNECTION TO EXISTING SEWER LINE IN EASEMENT.

PC 11058

SEWER IN EASEMENT ON CALORA ST.