

TO BE CONSTRUCTED

TRACT NO. 44462 PRIVATE CONTRACT NO. 11124 INDEX: 2259

SCALE SHEET 2 PAGES JULY, 1989 PREPARED IN THE OFFICES OF JOHN B. ABELL, INC. 148 WEST OAK ST. LOS ANGELES, CALIF. 90012 TEL. (213) 945-7671

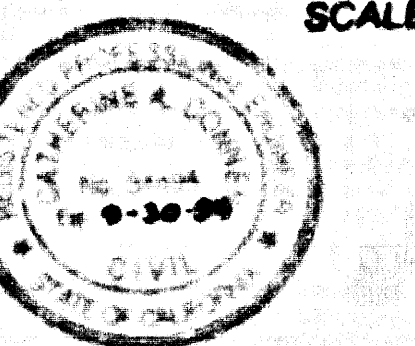


Table with 2 columns: Item description and Quantity. Includes items like LABOR, MATERIALS, and SPECIAL PROVISIONS.

COUNTY OF LOS ANGELES, CALIFORNIA THOMAS A. THOMASON, DIRECTOR DEPARTMENT OF PUBLIC WORKS CHARLES W. CANNY, CHIEF ENGINEER

PRIVATE ENGINEER'S NOTICE TO CONTRACTORS

THE EXISTING UTILITIES AND STRUCTURES SHOWN ON THESE PLANS ARE OBTAINED BY A REASONABLE INVESTIGATION OF THE RECORDS OF THE COUNTY ENGINEER...

GENERAL NOTES CONT.

CONSTRUCTION NOTES CONT.

- 1. ALL REVISIONS ON THIS PLAN TO THE COUNTY ENGINEER... 2. FULL COMPLIANCE WITH PART 11 OF THE SPECIAL PROVISIONS... 3. SCHEDULE CATCH BASINS AND CHAMBERS ARE REQUIRED FOR THE INSTALLATION OF A.S.S. COMPOSITE PIPE...

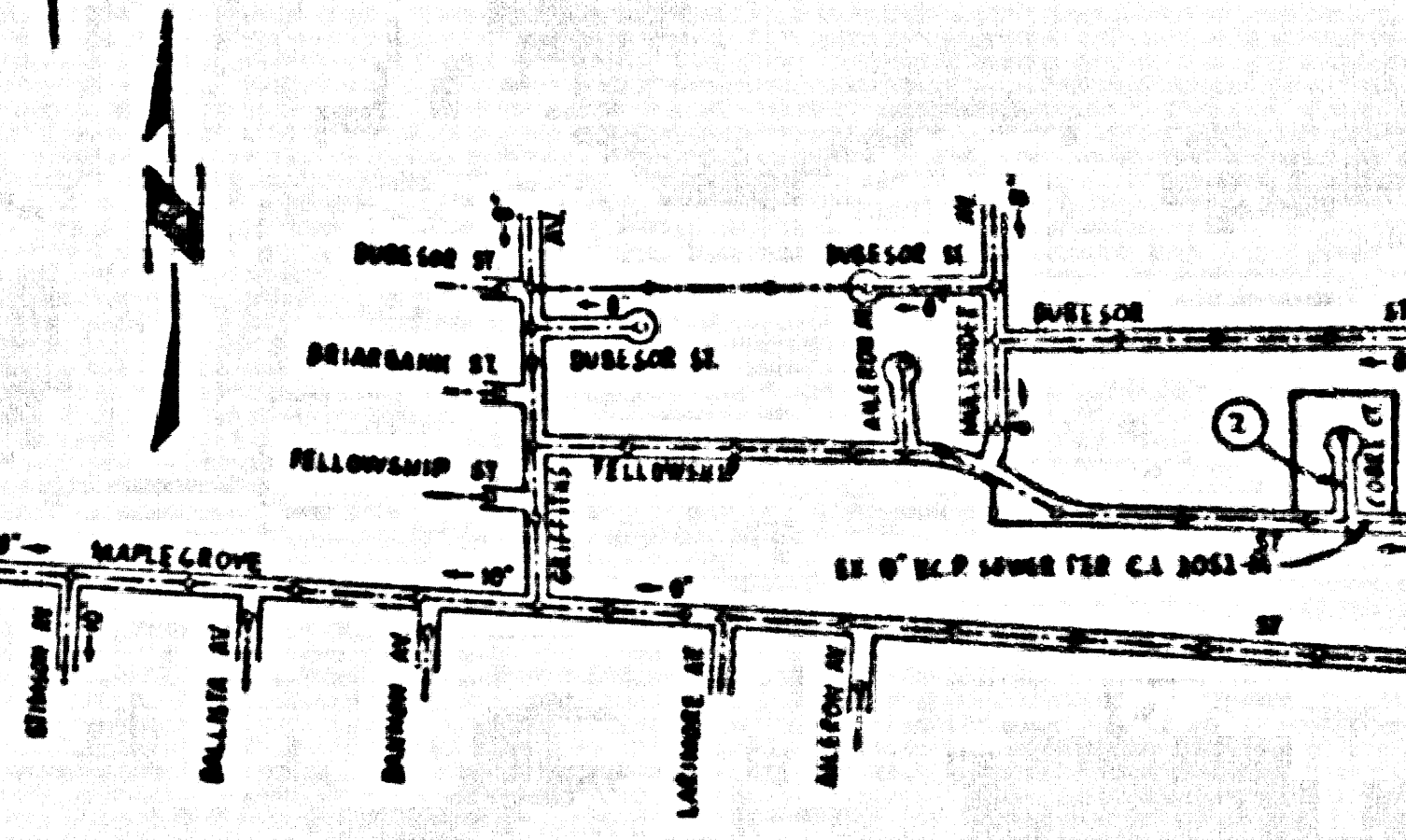
GENERAL NOTES:

- 1. REVISIONS ARE IN PINK INK... 2. NO REVISIONS SHALL BE MADE IN THESE PLANS WITHOUT THE APPROVAL OF THE DEPT. OF PUBLIC WORKS... 3. NO REVISIONS OF THE DEPT. OF PUBLIC WORKS WILL SURVEY OR LAY OUT ANY PORTION OF THE WORK...

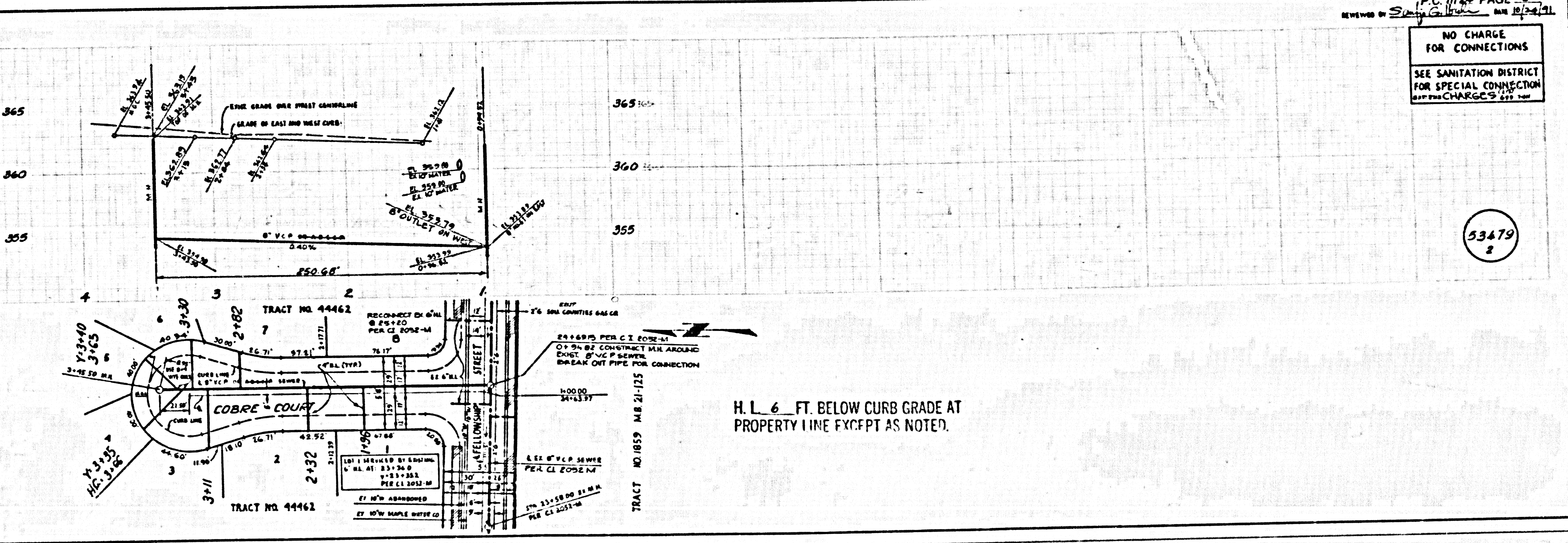
CONSTRUCTION NOTES:

- 1. WORK SHALL BE CONSTRUCTED ACCORDING TO THE STANDARD SPECIFICATIONS FOR PUBLIC WORKS... 2. THE CONTRACTOR SHALL NOTIFY THE COUNTY ENGINEER... 3. HOUSE LATERALS TO BE CONSTRUCTED WITH BRICKS OR PROPERTY LINE A FEET BELOW CURB GRADE EXCEPT AS NOTED...

B.M. CG 404 ELEV. 371.998 SB 100 SPC. IN 10' CO. 1' BY 1/4" x 3/8" C.S. 8' IN CO. 2' x 2' x 1/4" SPC. AND 1/4" x 1/4" x 1/4" SPC. AND 1/4" x 1/4" x 1/4" SPC. BASELINE QUAD. 1975



TRACT NO. 44462 INDEX MAP SCALE: 1" = 40' P.C. 11124; T.O. PG. 92, 94; INDEX: 2259



P.C. 11124 PAGE 2 REVIEWED BY [Signature] DATE 10/1/91

NO CHARGE FOR CONNECTIONS SEE SANITATION DISTRICT FOR SPECIAL CONNECTION

H. L. 6 FT. BELOW CURB GRADE AT PROPERTY LINE EXCEPT AS NOTED.

BC 1111 CA SAPP ON TRACT

SAPP ON TRACT