

PRIVATE ENGINEER'S NOTICE TO CONTRACTORS

THE EXISTENCE AND LOCATION OF ANY UNDERGROUND UTILITY PIPES OR STRUCTURES SHOWN ON THESE PLANS ARE OBTAINED BY A SEARCH OF THE AVAILABLE RECORDS. TO THE BEST OF OUR KNOWLEDGE THERE ARE NO EXISTING UTILITIES EXCEPT AS SHOWN ON THESE PLANS. THE CONTRACTOR IS REQUIRED TO TAKE DUE PRECAUTIONARY MEASURES TO PROTECT THE UTILITIES SHOWN AND OTHER LINES NOT OF RECORD OR NOT SHOWN ON THESE PLANS. THE CONTRACTOR SHALL BE RESPONSIBLE FOR NOTIFYING 'UNDERGROUND SERVICE ALERT' AT 1-800-422-4133 TWO WORKING DAYS PRIOR TO ANY EXCAVATION OR CONSTRUCTION.

Robert Kallalrauf
REGISTERED ENGINEER R.C.E. NO. 27987

REVISION NO. 1 DATE: APRIL 24, 1992
PAGE 2: REIMPOSE COVER OVER SERVICE LINE FROM STA. 11+00 TO STA. 11+39;
PAGE 2B: REIMPOSE SIDEWALK DRAW IN THE PLAN AND PROFILE.

APPROVED: *Scott G. Habel*
REGISTERED PROFESSIONAL ENGINEER
STATE OF CALIFORNIA

- CONSTRUCTION NOTES CONT.**
- RESURFACE ALL TRENCHES WITHIN PAVED AREAS TO MEET LOS ANGELES COUNTY PUBLIC WORKS OR CALIFORNIA STATE HIGHWAY REQUIREMENTS IN ACCORDANCE WITH THE PERMITS.
 - FULL COMPLIANCE WITH SECTION 906.1.3 OF THE STANDARD SPECIFICATIONS WILL BE REQUIRED FOR BACKFILL IN STREETS. CERTIFICATION OF BACKFILL COMPACTION AND SAND EQUIVALENTS BY A QUALIFIED CIVIL ENGINEER SHALL BE PROVIDED BY THE PERMITTEE PRIOR TO THE ISSUANCE OF A CERTIFICATE OF PARTIAL ACCEPTANCE.
 - ALL BACKFILL AND FILLS OUTSIDE OF STREET RIGHT OF WAY SHALL BE COMPACTED TO 90% OF MAXIMUM DENSITY AS DETERMINED BY ASTM SOIL COMPACTION TEST D 1557 METHOD 'D' UNLESS OTHERWISE SPECIFIED. THIS SHALL BE CERTIFIED BY A QUALIFIED CIVIL ENGINEER. THIS CERTIFICATION SHALL BE SUBMITTED TO THE CONSTRUCTION DIVISION OF THE DEPARTMENT OF PUBLIC WORKS PRIOR TO ACCEPTANCE OF THE WORK BY THE COUNTY.
 - MANHOLE TOPS IN UNIMPROVED RIGHTS OF WAY TO BE SIX INCHES ABOVE FINISHED GRADE.
 - SEWERS TO BE TESTED FOR LEAKAGE PER SECTION 906.1.4 OF THE STANDARD SPECIFICATIONS AND SPECIAL PROVISIONS.
 - FULL COMPLIANCE WITH PART IV OF THE SPECIAL PROVISIONS IS REQUIRED FOR THE INSTALLATION OF A.B.S. COMPOSITE PIPE.
 - MANHOLE WATER STOP GASKETS AND CLAIMS ARE REQUIRED FOR THE CONNECTION OF A.B.S. COMPOSITE PIPE TO MANHOLE STRUCTURES.
 - A.B.S. SOLID WALL PIPE MUST BE USED FOR WYE AND HOUSE LATERAL CONNECTIONS TO A.B.S. COMPOSITE MAINLINE SEWER PIPE.
 - A.B.S. COMPOSITE PIPE SHALL BE BEDDED IN CONFORMANCE WITH THE TABLE IN SECTION 83.1 OF PART IV OF THE SPECIAL PROVISIONS.
 - TRENCH DEFLECTION COUPLERS ARE REQUIRED FOR RADIUS OF CURVATURE LESS THAN 30 FEET WHEN USING 8" A.B.S. COMPOSITE PIPE.
 - NO CONNECTIONS FOR DISPOSAL OF INDUSTRIAL WASTE IS ALLOWED IF A.B.S. COMPOSITE PIPE IS USED.
 - SEWER LINE CURVATURE SHALL NOT BE ACHIEVED BY PULLING OF JOINTS OR REVELING PIPE ENDS WHEN USING PLASTIC PIPE INCLUDING A.B.S. COMPOSITE PIPE.
 - ALL WYES AND/OR HOUSE LATERALS ARE TO BE LOCATED AT LEAST FIVE FEET APART AND WHEN POSSIBLE NOT CLOSER THAN FIVE FEET TO ANY MANHOLE.
 - A.B.S. SOLID WALL PIPE IS NOT ACCEPTABLE FOR USE AS MAINLINE SEWER.
 - ONLY WYE BRANCHES ARE TO BE USED FOR CONNECTION TO A.B.S. COMPOSITE MAINLINE SEWER.

NOTE: 1. NUMBERS IN CIRCLES INDICATE PAGE NUMBERS
2. DASH LINES INDICATE FUTURE SCENARIOS IN FUTURE STREETS

INDEX MAP
TRACT NO. 49329
PC. 1141
P.G. 673-C7

SCALE: 1"=60'

DO NOT HOUSE LATERAL CONNECTION RESULTS UNTIL OUTLET SEWER PC. 1142 IS SUBMITTED AND ACCEPTED FOR PUBLIC USE BY THE COUNTY OF LOS ANGELES.

LA COUNTY SEWER PRIVATE CONTRACT ACCEPTED FOR PUBLIC USE
02-12-2000
COUNTY OF LOS ANGELES
DEPARTMENT OF PUBLIC WORKS
LAND DEVELOPMENT DIVISION

RECORD PLANS DOUBLE SCALE

- GENERAL NOTES:**
- A SEWER CONSTRUCTION PERMIT SHALL BE OBTAINED AND A FEE PAID FOR CONSTRUCTION INSPECTION AND RECORD PLANS TO THE DEPARTMENT OF PUBLIC WORKS AT THE PERMIT COUNTER, 90 SOUTH FLEMING AVENUE, 8TH FLOOR, ALHAMBRA, AT LEAST 72 HOURS PRIOR TO STARTING WORK UNDER THIS CONTRACT. COPIES OF ALL OTHER REQUIRED PERMITS, SUCH AS ROAD EXCAVATION, CAL TRANS, ETC. MUST BE FILED WITH THE PERMIT APPLICATION.
 - PRIOR TO ISSUANCE OF ANY PERMIT, THE CONTRACTOR SHALL FILE A PERMIT FOR EXCAVATIONS AND TRENCHES FROM THE STATE OF CALIFORNIA DIVISION OF INDUSTRIAL SAFETY AND A CERTIFICATE OF WORKER COMPENSATION INSURANCE WITH THE DEPARTMENT OF PUBLIC WORKS NAMED AS THE CERTIFICATE HOLDER TO BE NOTIFIED 30 DAYS PRIOR TO CANCELLATION OF POLICY.
 - IF WORK IS TO BE DONE IN A STATE HIGHWAY, A PERMIT MUST BE OBTAINED FROM THE STATE OF CALIFORNIA DIVISION OF HIGHWAYS, 130 SOUTH SPRING STREET, LOS ANGELES, CALIFORNIA.
 - WHEN WORK IS WITHIN A CONTRACT CITY, THE CONTRACTOR MUST CONTACT THE DIRECTOR OF PUBLIC WORKS OF THAT CITY TO DETERMINE THE LOCATION TO PAY THE INSPECTION FEE.
 - THE CONTRACTOR SHALL CONTACT THE DISTRICT OFFICE LISTED ON THE APPLICATION FOR CONSTRUCTION PERMIT TO ARRANGE FOR AN ACCEPTABLE CONSTRUCTION START DATE, AND SHALL NOTIFY THE CONSTRUCTION DIVISION BY TELEPHONE (213) 229-7547 AT LEAST TWENTY-FOUR HOURS BEFORE STARTING ANY WORK UNDER THIS CONTRACT.
 - APPROVAL OF THIS PLAN BY THE COUNTY OF LOS ANGELES DOES NOT CONSTITUTE A REPRESENTATION AS TO ACCURACY OF THE LOCATION OF OR THE EXISTENCE OR NON-EXISTENCE OF ANY UNDERGROUND UTILITY PIPE OR STRUCTURE WITHIN THE LIMITS OF THIS PROJECT. THIS NOTE APPLIES TO ALL PAGES.
 - ALL WORK SHALL BE IN ACCORDANCE WITH THE STANDARD SPECIFICATIONS FOR PUBLIC WORKS CONSTRUCTION 1988 EDITION, INCLUDING SUPPLEMENTS AND THE SPECIAL PROVISIONS FOR THE CONSTRUCTION OF SANITARY SEWERS DATED JULY 31, 1991, AND SHALL BE PROSECUTED ONLY IN THE PRESENCE OF THE DEPARTMENT OF PUBLIC WORKS PERSONNEL.
 - THE CONTRACTOR'S ATTENTION IS DIRECTED TO SECTION 104.1 OF THE STANDARD SPECIFICATIONS FOR PUBLIC WORKS CONSTRUCTION IN REGARD TO SAFETY ORDERS AND SHALL CONFORM TO THE 'MINIMUM PUBLIC SAFETY REQUIREMENTS' AS SHOWN ON LOS ANGELES DEPARTMENT OF PUBLIC WORKS STANDARDS 5.2.
 - ELEVATIONS ARE IN FEET ABOVE U.S.C. & G.S. SEA LEVEL DATUM OF 1929.
 - NO DIVERSIONS SHALL BE MADE IN THESE PLANS WITHOUT THE APPROVAL OF THE DIRECTOR OF PUBLIC WORKS.
 - NO REPRESENTATIVE OF THE DEPARTMENT OF PUBLIC WORKS WILL SURVEY OR LAY OUT ANY PORTION OF THE WORK.
 - GRADES TO WHICH THIS IMPROVEMENT IS TO BE CONSTRUCTED ARE SHOWN ON PLANS AND PROFILES. GRADE POINTS FOR TOP OF CURBS, CENTERLINE OF STREET, OR CENTERLINE OF ALLEYS, ARE SHOWN BY CIRCLES ON PROFILES AT ALL POINTS BETWEEN CONNATED POINTS. THE GRADE SHALL BE ESTABLISHED SO AS TO CONFORM TO A STRAIGHT LINE DRAWN BETWEEN SAID DISJOINTED POINTS.
 - THE PRIVATE ENGINEER SHALL FURNISH THE DEPARTMENT OF PUBLIC WORKS WITH GRADE SHEETS AND STATIONING FOR ALL HOUSE LATERALS AND 12" OR 16" BRANCHES AND SHALL FURNISH STAKES FOR THE SAME FROM LOCATIONS WITH STATIONING PLAINLY MARKED. ALL HOUSE LATERALS SHALL BE CONSTRUCTED IN A STRAIGHT ALIGNMENT AT RIGHT ANGLES FROM THE MAIN LINE SEWER EXCEPT AS SHOWN ON THESE PLANS. HOUSE LATERALS FROM CHIMNEYS SHALL NOT HAVE AN ANGLE OF LESS THAN 45° WITH THE MAIN SEWER. ANY CHANGE IN ALIGNMENT SHALL BE REQUESTED IN WRITING BY THE PRIVATE ENGINEER.
 - THE PRIVATE ENGINEER SHALL FURNISH THE HOUSE LATERAL DEPTH AT THE PROPERTY LINE BELOW THE TOP CURB ELEVATION FOR EACH HOUSE LATERAL ON THE GRADE SHEET.

- CONSTRUCTION NOTES:**
- PROVIDE SURVEY STAKES ON THE PROPERTY LINE OR PROPERTY LINES PRODUCED AT RIGHT ANGLES TO THE SEWER LINE AT THE CENTERLINE OF EACH MANHOLE.
 - VITRIFIED CLAY PIPE JOINTS SHALL BE TYPE 'D' OR 'D' PER STANDARD SPECIFICATIONS SECTION 208.2.
 - IF A POWER POLE IS WITHIN THREE FEET OF THE SEWER, THE SEWER SHALL BE ENCASED PER STANDARD PLAN 5-3, CASE B, TWO FEET ON EACH SIDE FROM THE POINT OF INTERFERENCE.
 - ALL JOINTS BETWEEN CAST IRON PIPE AND VITRIFIED CLAY PIPE SHALL BE MADE WITH A RUBBER SLEEVE JOINT, TYPE 'D' (WITH BUSHING IF NECESSARY) PER STANDARD SPECIFICATIONS SECTION 208.2.
 - HOUSE LATERALS TO BE CONSTRUCTED WITH INVERTS AT THE PROPERTY LINE 4 FEET BELOW CURB GRADE EXCEPT AS NOTED.
 - WYE OR THE BRANCHES MAY BE USED FOR CONNECTIONS TO MAINLINE SEWERS EXCEPT AS NOTED.
 - IF DURING THE COURSE OF CONSTRUCTION, IT IS DETERMINED THAT THERE IS LESS THAN FOUR FEET OF COVER OVER THE TOP OF A MAINLINE OR HOUSE LATERAL V.C.F. SEWER WHICH IS NOT INDICATED ON THE PLANS, THE PIPE SHALL BE ENCASED PER STANDARD PLAN 5-3, CASE B, UNLESS OTHERWISE APPROVED BY THE DIRECTOR OF PUBLIC WORKS.
 - ALL STRUCTURES SHALL BE EITHER BRICK SEWER MANHOLES PER STANDARD PLAN 5-3 OR PRECAST CONCRETE SEWER MANHOLES PER STANDARD PLAN 5-3A, OR REINFORCED PRECAST CONCRETE MANHOLE PER STANDARD PLAN 5-4 EXCEPT AS NOTED.

RECORD PLANS DOUBLE SCALE

PROFILE, ALIGNMENT AND GRADE OF
SANITARY SEWERS
TO BE CONSTRUCTED IN
TRACT NO. 49329
PRIVATE CONTRACT NO. 1141
INDEX E 1306

5 SHEETS; 9 PAGES
SEPTEMBER 1990
SCALE: VERT. 1"=8'
HORIZ. 1"=40'

PREPARED IN THE OFFICES OF
Robert Kallalrauf
REGISTERED PROFESSIONAL ENGINEER
STATE OF CALIFORNIA

THE FOLLOWING LATEST REVISED STANDARD PLANS ON FILE IN THE OFFICE OF THE DEPARTMENT OF PUBLIC WORKS SHALL APPLY IN THE CONSTRUCTION OF THIS PROJECT:

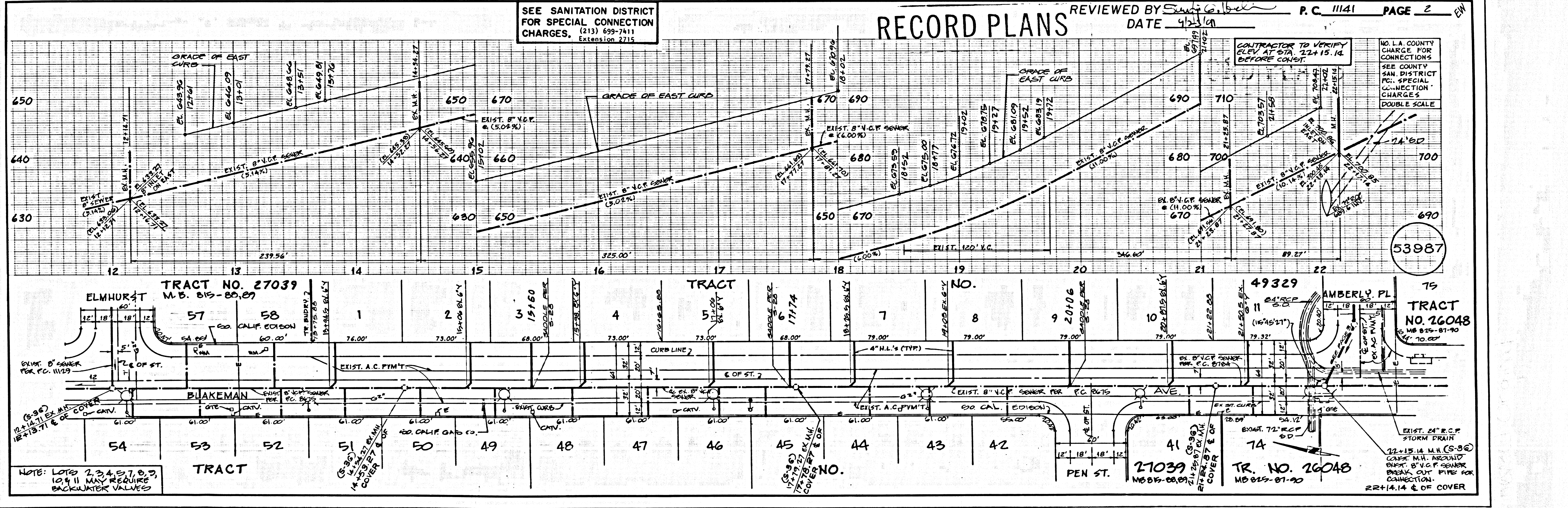
LEGEND	5-1
MINIMUM PUBLIC SAFETY REQUIREMENTS	5-2
BRICK SEWER MANHOLE	5-3
STANDARD MANHOLE STEP	5-17
BEDDING FOR SEWER PIPE	5-21
CRACKING AND ENCASEMENT	5-22
WYE OR TEE SUPPORT	5-23
ALLOWABLE TRENCH WIDTHS	5-23
LOADING MANHOLE FRAME AND COVER	5-28
NON-REINFORCED PRECAST CONCRETE SEWER MANHOLE	5-38
SPECIAL SEWER HOUSE LATERAL	5-75
BRICK SEWER HOUSE LATERAL	5-76
CHIMNEY PIPE & BRICK	6-21
TABLE OF COMPUTING NORMAL DROPS THROUGH M.H. & CS	6-25

COUNTY OF LOS ANGELES, CALIFORNIA
THOMAS A. TIDEMANSON
DIRECTOR OF PUBLIC WORKS
APPROVED: *Dean Spalding* 9/24/91
CHECKED: *Tom Heford* 9/24/91
REG. CE NO. 20273

CHARLES W. CARRY
CHIEF ENGINEER
CO. SAN DIST. NO. 24
APPROVED: *William Sear* 10/2/92
OFFICE ENGINEER

REVISION NO. 2 DATE 2/27/95
LOWERED SEWER TO MATCH REVISED STREET ELEVATIONS PAGES 5-3

LA PUENTE BLDG. DIST. 2



SEE SANITATION DISTRICT FOR SPECIAL CONNECTION CHARGES, (213) 699-7411 Extension 2715

REVIEWED BY *Scott G. Habel* P.C. 1141 PAGE 2

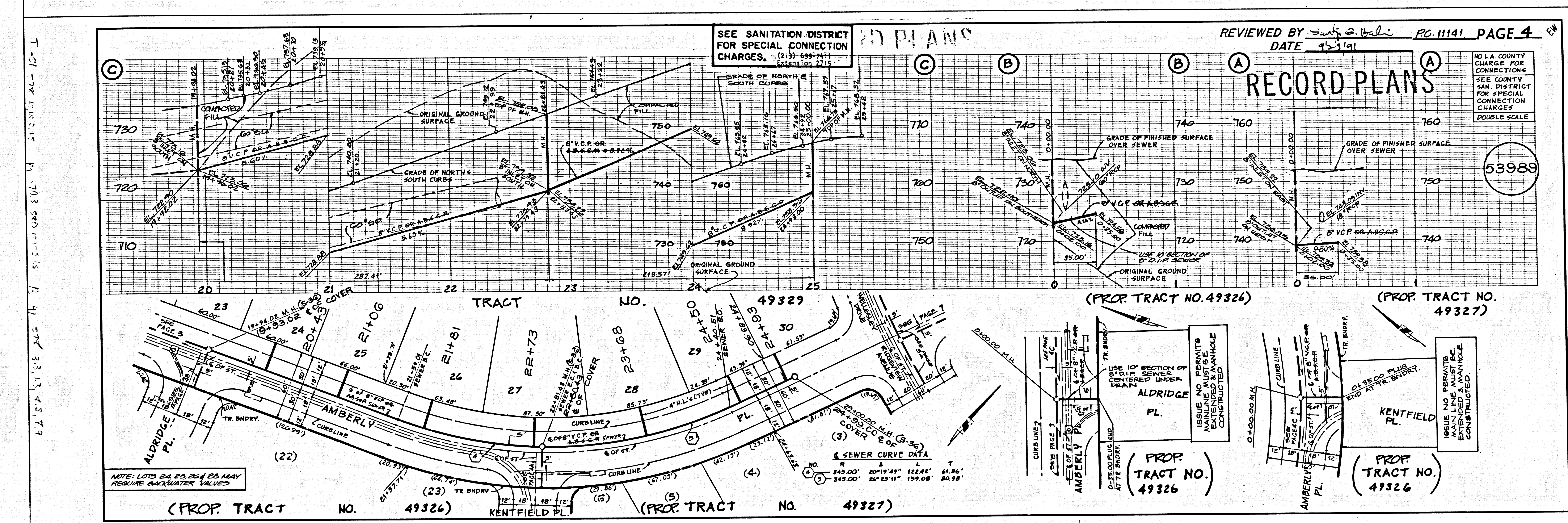
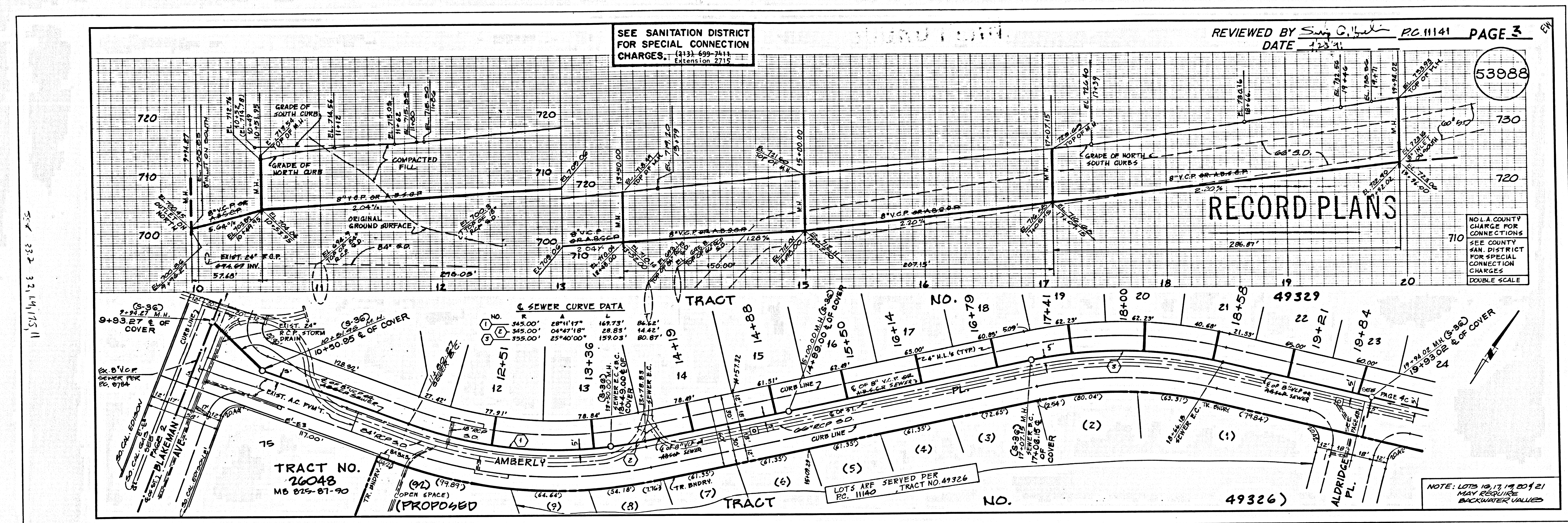
DATE 4/21/92

NO. LA COUNTY CHANGE FOR CONNECTIONS
SEE COUNTY SAN. DISTRICT PG. SPECIAL CONNECTION CHARGES
DOUBLE SCALE

CONTRACTOR TO VERIFY ELEV. AT STA. 22+15.14 BEFORE CONSTR.

NOTE: LOTS 7, 34, 57, 63, 10 & 11 MAY REQUIRE BACKWATER VALVES

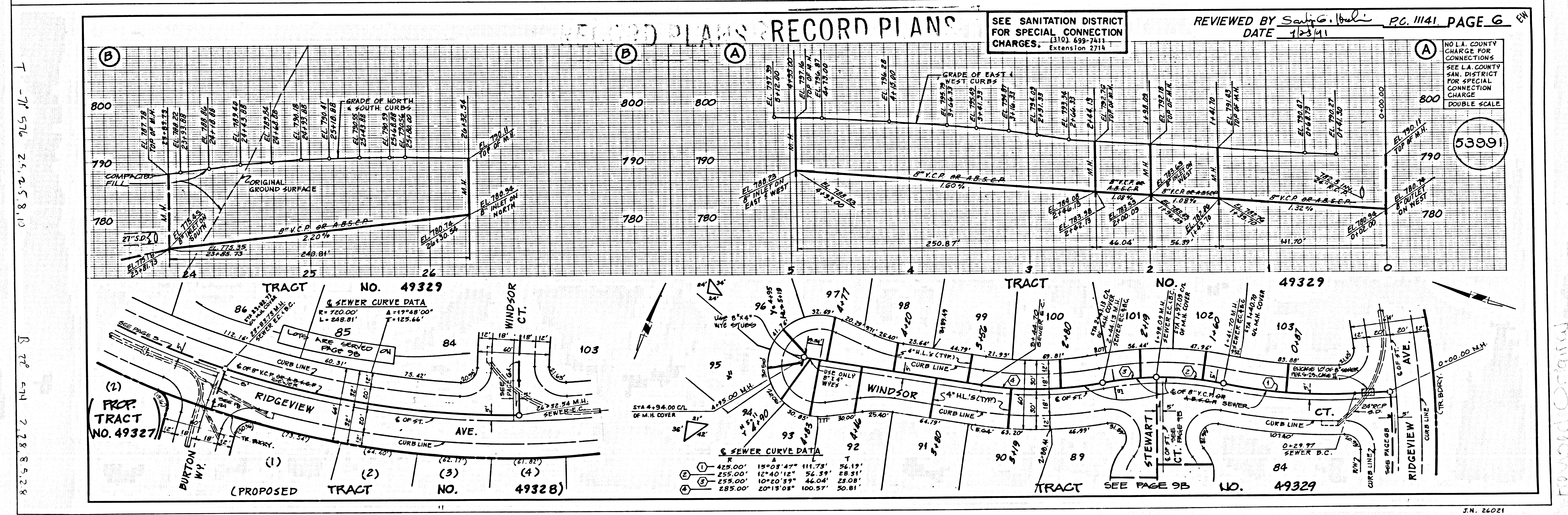
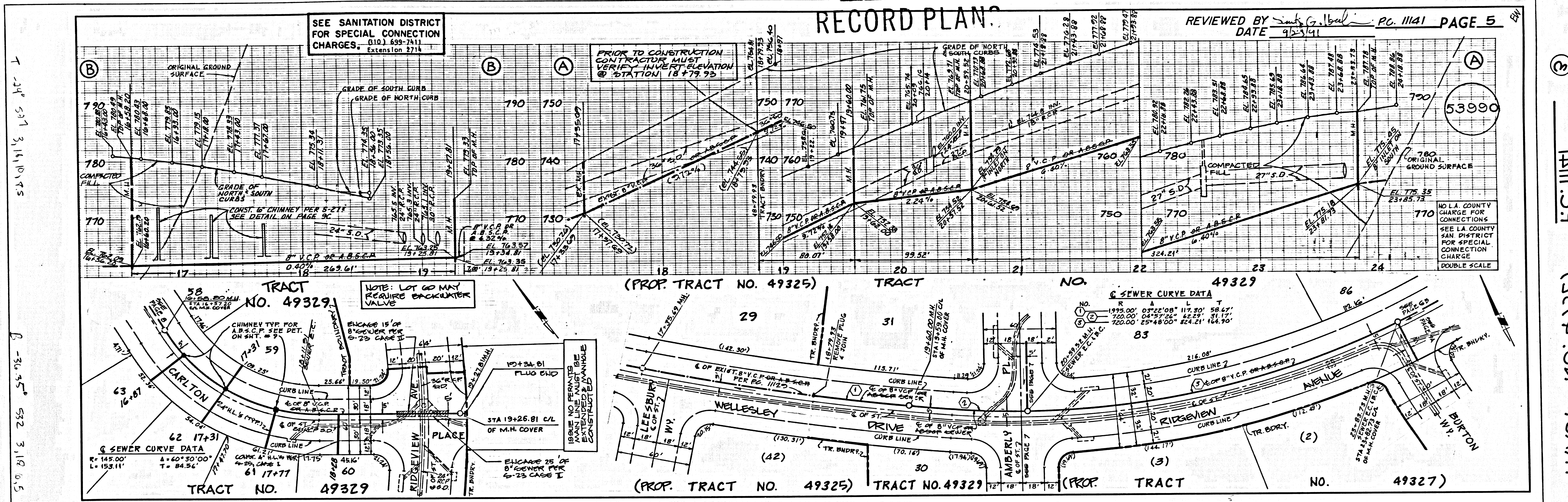
LA COUNTY SEWER DIST. NO. 1 C.M. N. (213) 699-9440 22-12 8/78 JN 26021



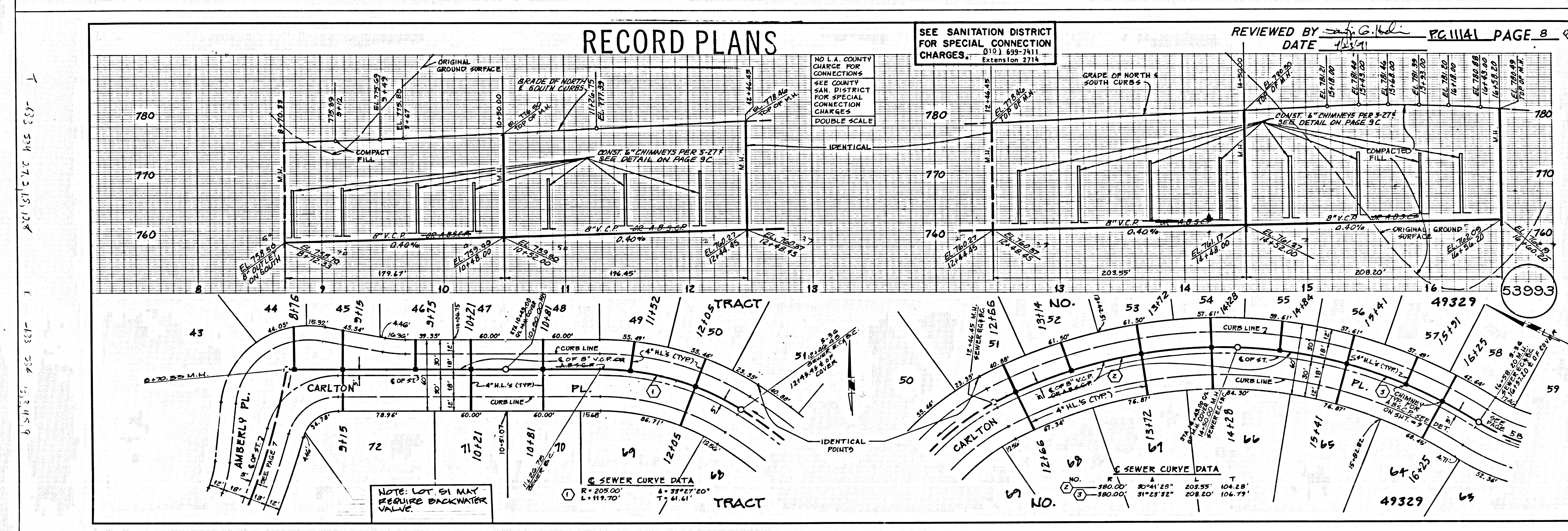
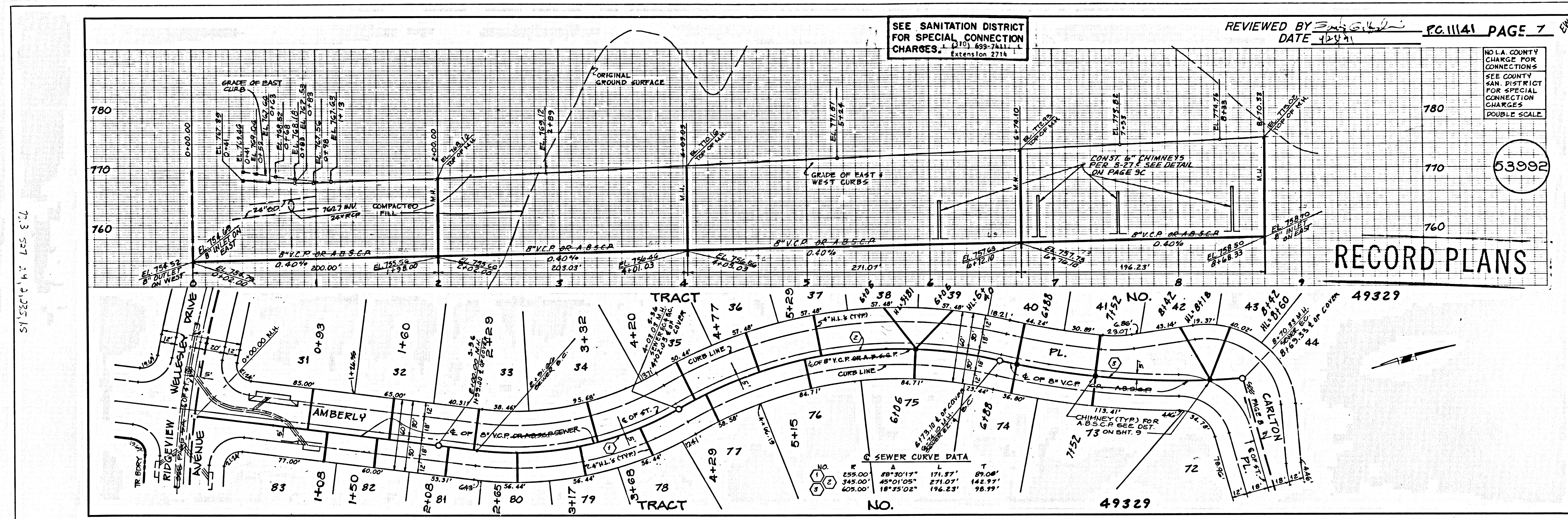
14111.09
ESERP. 01 TRACT

T - 24' 53" 3.16.1975
 B - 26' 35" 582 3.18.0.5

T - 71' 57" 25.2.5.8.1.0
 B - 72' 47" 2.78.8.5.2.8



③ 1411.09
 95884.01 TRACT



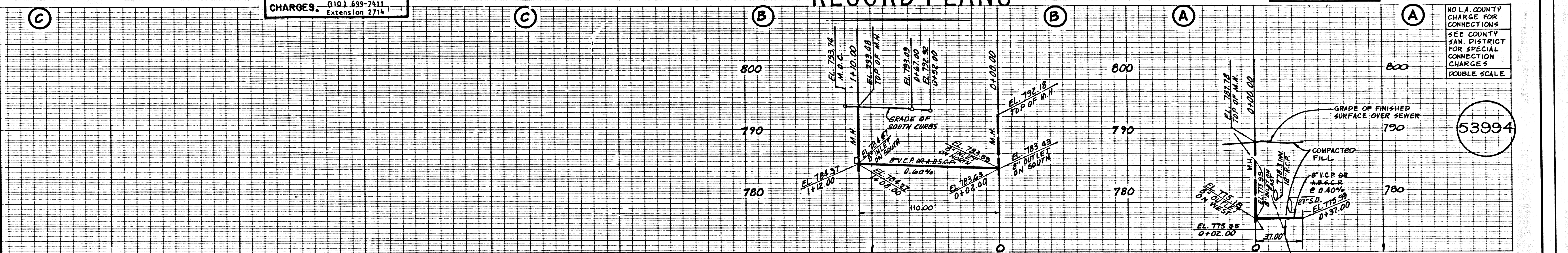
4 1A11.59 PSEPP. ON T3ART

T 873 574 262332 B 182° 577 2426412

SEE SANITATION DISTRICT FOR SPECIAL CONNECTION CHARGES. (310) 639-7411 Extension 2714

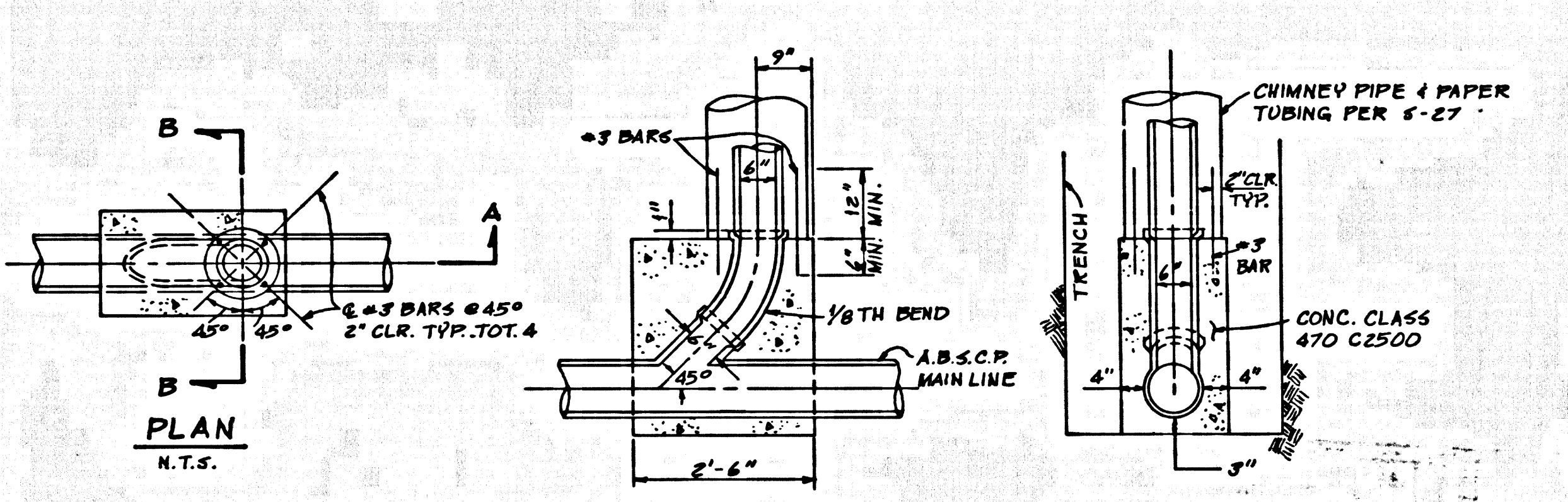
RECORD PLANS

REVIEWED BY W. C. H. H. PC 11141 PAGE 9
DATE 1/25/41



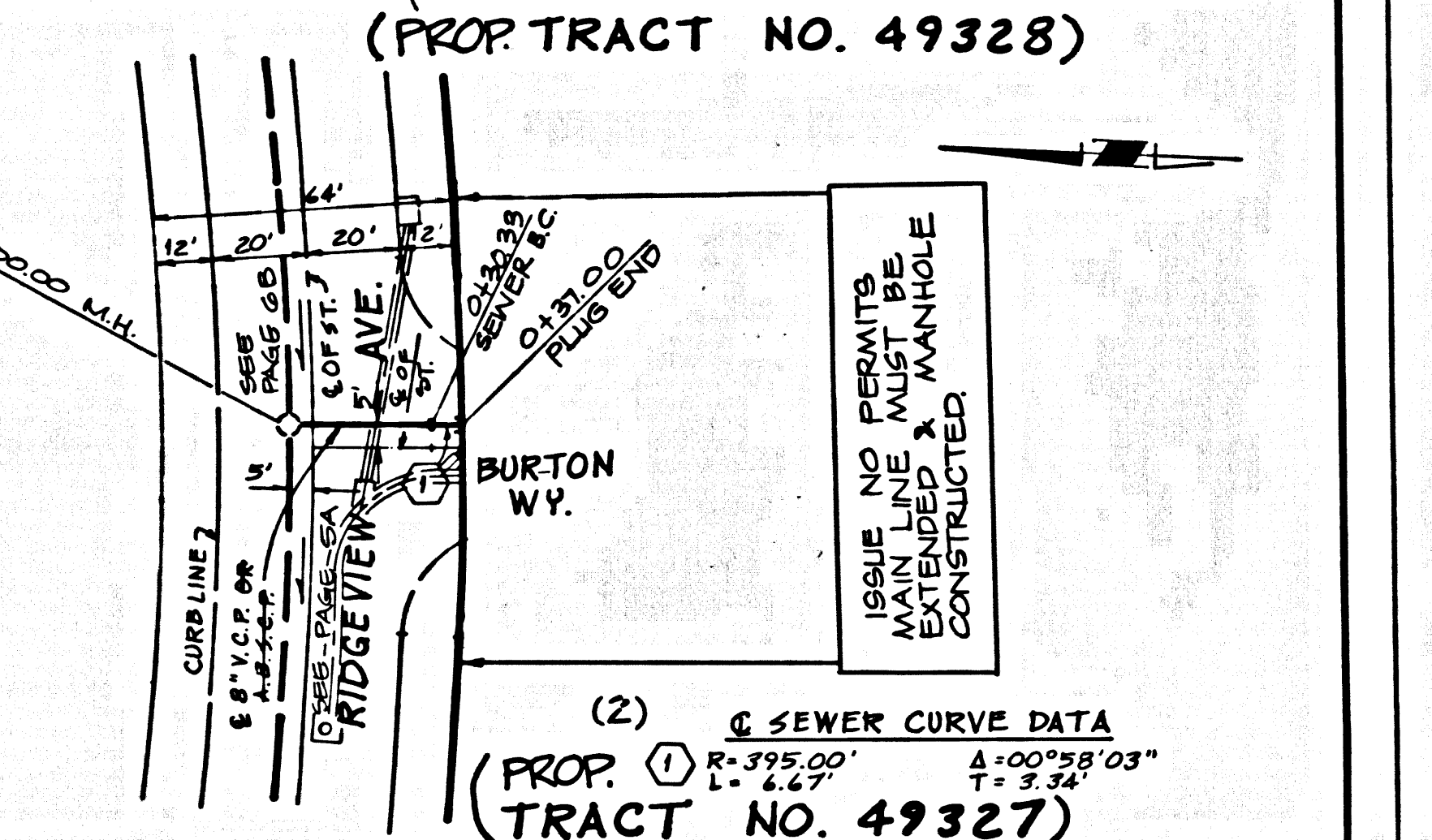
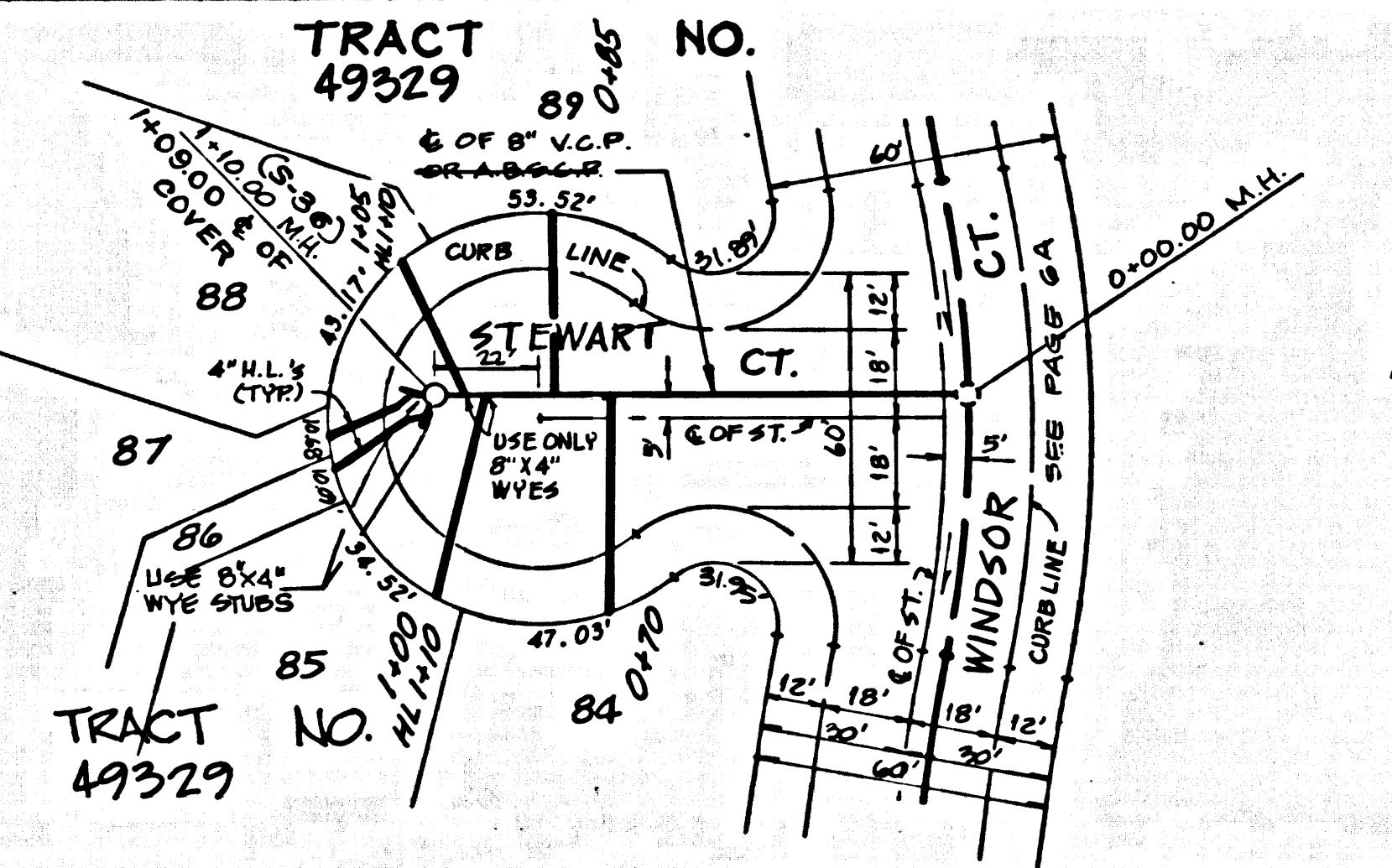
NO L.A. COUNTY CHARGE FOR CONNECTIONS SEE COUNTY SAN. DISTRICT FOR SPECIAL CONNECTION CHARGES DOUBLE SCALE

53994

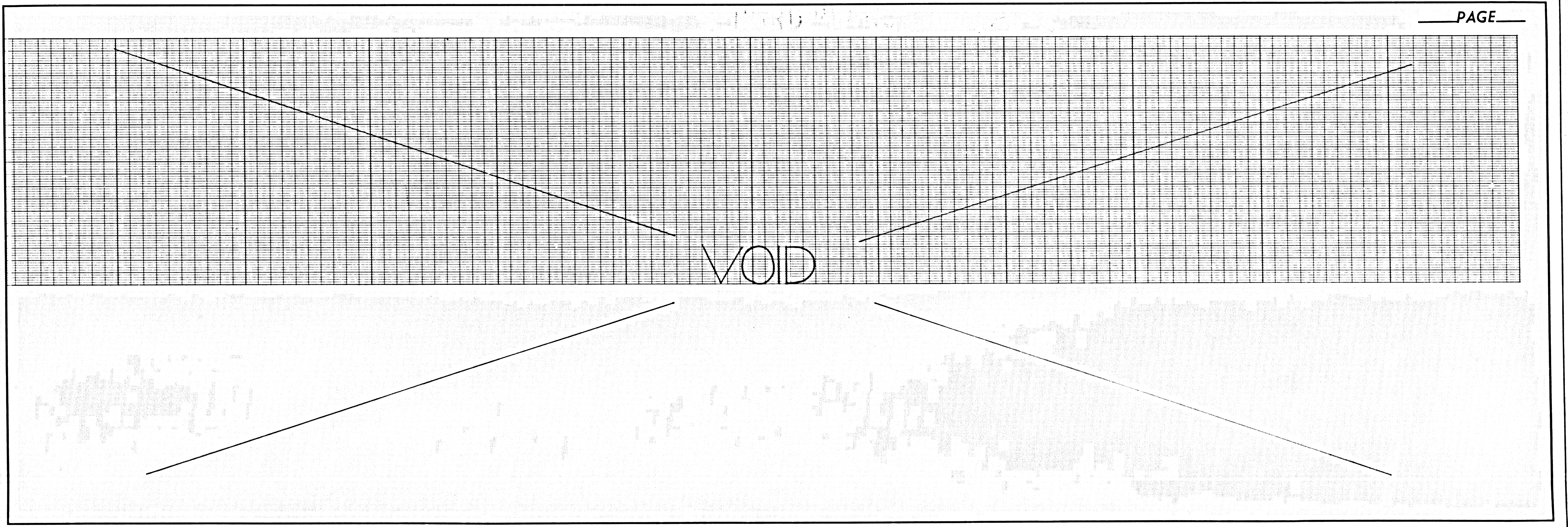


SECTION "A-A" SECTION "B-B" CHIMNEY BASE DETAILS FOR A.B.S.C.P. ALT.

28'	29'	5'	LOT 88:
			Y 1+05
			N 1+10
11'	23'		LOT 87:
			Y 1+13
			N 1+33
11'	23'		LOT 86:
			Y 1+10
			N 1+30
42'	43'		LOT 85:
			Y 1+00
			N 1+10



1111 BC 99 93384 ON TRACT



PAGE

Flashed Ground