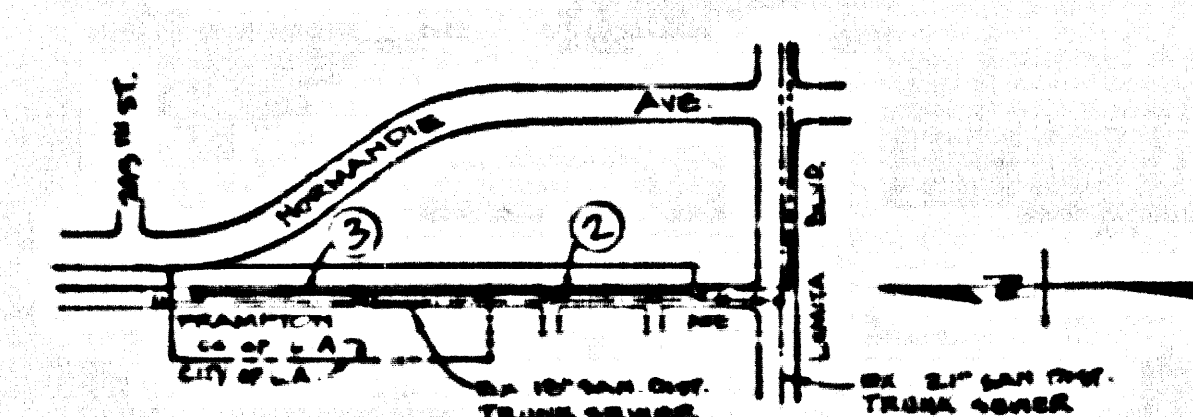


B.M. CY 3064 ELEV. 61.956
 LACE, MON. E NORMANDE AV.
 127 FT. 5/0 E 243 TH ST.
 GARDENA QUAD. 19 82

DOUBLE
 SCALE

NOTE: NUMBERS IN CIRCLES INDICATE
 PAGE NUMBERS



INDEX MAP
 TRACT NO. 49409
 SCALE: 1" = 200'
 P.C. NO. 11159
 T.G. 75 - P/2

- CONSTRUCTION NOTES CONTINUED:
17. ONLY VEE BRANCHES ARE TO BE USED FOR CONNECTION TO A.B.S. COMPOSITE MAINLINE SEWER PIPE.
 18. A.B.S. SOLID WALL PIPE IS NOT ACCEPTABLE FOR USE AS MAINLINE SEWER.
 19. FULL COMPLIANCE WITH PART IV OF THE SPECIAL PROVISIONS IS REQUIRED FOR THE INSTALLATION OF A.B.S. COMPOSITE PIPE.
 20. MANHOLE WATER STOP BANDS AND CLAMPS ARE REQUIRED FOR THE CONNECTION OF A.B.S. COMPOSITE MAIN LINE SEWER PIPE.
 21. A.B.S. SOLID WALL PIPE MUST BE USED FOR VEE AND HOUSE LATERAL CONNECTIONS TO A.B.S. COMPOSITE MAIN LINE SEWER PIPE.
 22. A.B.S. COMPOSITE PIPE SHALL BE BERDED IN COMPLIANCE WITH THE TABLE IN SECTION 8-13 OF PART IV OF THE SPECIAL PROVISIONS.
 23. CURB-OR-DECK DEFLECTION CURVES ARE REQUIRED FOR RADII OF CURVATURE LESS THAN 300 FEET WHEN USING 8" A.B.S. COMPOSITE PIPE.
 24. NO CONNECTIONS FOR DISPOSAL OF INDUSTRIAL WASTE IS ALLOWED IF A.B.S. COMPOSITE PIPE IS USED.
 25. SEWER LINE CURVATURE SHALL NOT BE ACHIEVED BY PULLING OF JOINTS OR BEVELING PIPE ENDS WHEN USING PLASTIC PIPE INCLUDING A.B.S. COMPOSITE PIPE.
 26. ALL VEE AND/OR HOUSE LATERALS ARE TO BE LOCATED AT LEAST FIVE FEET APART AND WHEN POSSIBLE NOT CLOSER THAN FIVE FEET TO ANY MANHOLE.

FLOW IS TO BE MAINTAINED AT ALL TIMES
 ISSUE NO H.L. PERMIT UNTIL OUTLET
 SEWER P.C. 11188 IS ACCEPTED FOR
 PUBLIC USE BY THE COUNTY OF L.A.

NO CONNECTION FOR THE DISPOSAL OF INDUSTRIAL WASTES
 SHALL BE MADE TO SEWERS SHOWN ON THESE DRAWINGS UNTIL
 A PERMIT FOR INDUSTRIAL WASTEWATER DISCHARGE HAS BEEN
 ISSUED BY THE SANITATION DISTRICTS FOR SAID CONNECTION.

BEFORE BREAKING INTO OR CONSTRUCTION ON A COUNTY
 SANITATION DISTRICT SEWER AND PRIOR TO FINAL
 ACCEPTANCE OF THE PROJECT, SANITATION DISTRICT
 INSPECTOR SHALL BE NOTIFIED BY PHONE (213) 638-1161
 SO THAT REQUIRED INSPECTION CAN BE MADE.

GENERAL NOTES:

1. ELEVATIONS ARE IN FEET ABOVE U.S.C. & G.S. MEAN SEA LEVEL, DATUM OF 1929.
2. NO REVISIONS SHALL BE MADE IN THESE PLANS WITHOUT THE APPROVAL OF THE DIRECTOR OF PUBLIC WORKS.
3. NO REPRESENTATIVE OF THE DEPARTMENT OF PUBLIC WORKS SHALL SURVEY OR LAY OUT ANY PORTION OF THE WORK.
4. GRADES TO WHICH THIS IMPROVEMENT IS TO BE CONSTRUCTED AND SHOWN ON PLANS AND PROFILES GRADE POINTS FOR TOP OF CURBS, CENTERLINE OF STREETS, CENTERLINE OF ALLEYS OR SIDEWALKS, MANHOLE TOPS, AND POINTS TO WHICH THE GRADES SHALL BE ESTABLISHED SHALL BE CONFORM TO A STRAIGHT LINE DRAWN BETWEEN SAID GRADE POINTS.
5. THE PRIVATE ENGINEER SHALL FURNISH THE DEPARTMENT OF PUBLIC WORKS WITH DETAILED SHEETS AND EXPLANATIONS FOR ALL HOUSE LATERALS, VEE OR VEE BRANCHES AND SMALL PROPOSED STAKES FOR THEM AT THEIR PROPER LOCATIONS WITH STATIONING TO BE FULLY MARKED. ALL HOUSE LATERALS SHALL BE CONSTRUCTED IN STRICT ALIGNMENT WITH THE MAINLINE SEWER. THE MAINLINE SEWER SHALL BE CONSTRUCTED IN THE PLANS AND HOUSE LATERALS AND BRANCHES SHALL NOT BE AN INCH OR LESS CHANGED FROM THE MAINLINE SEWER. ANY CHANGE IN ALIGNMENT SHALL BE INDICATED IN WRITING BY THE PRIVATE ENGINEER.
6. THE PRIVATE ENGINEER SHALL SUBMIT THE HOUSE LATERAL DEPTH AT THE PROPERTY LINE BELOW THE TOP OF CURB ELEVATION FOR EACH HOUSE LATERAL ON THE GRADE SHEET.
7. BEFORE WORK CAN BE STARTED THE CONTRACTOR MUST OBTAIN A PERMIT TO EXCAVE IN COUNTY STREETS FROM THE CONSTRUCTION DIVISION OF THE LOS ANGELES DEPARTMENT OF PUBLIC WORKS. PERMIT CHARGE FOUR DOLLARS AND FEE TO THE DIRECTOR OF PUBLIC WORKS, ROOM 3, PRECINCT AVE., ALHAMBRA, CALIFORNIA 91803 - 8TH FLOOR, TO COVER THE COST OF CONSTRUCTION INSPECTION AND RECORD PLANS.
8. IF WORK IS TO BE DONE IN A STATE HIGHWAY A PERMIT MUST BE OBTAINED FROM THE STATE OF CALIFORNIA, DIVISION OF HIGHWAYS, 120 SOUTH BRIDGE STREET, LOS ANGELES, CALIFORNIA.
9. APPROVAL OF THIS PLAN BY THE COUNTY OF LOS ANGELES DOES NOT CONSTITUTE A REPRESENTATION AS TO THE ACCURACY OF THE LOCATION OF OR THE EXISTENCE OR NON-EXISTENCE OF ANY UNDERGROUND UTILITIES OR STRUCTURE WITHIN THE LIMITS OF THIS PROJECT. THIS NOTE APPLIES TO ALL PAGES.
10. REFER TO SECTION 7-18.4 OF THE STANDARD SPECIFICATIONS REGARDING NO. 5 1/2" CURBS.
11. UNDER THE PROVISIONS OF THE REQUIRED SEWER CONSTRUCTION PERMIT THE CONTRACTOR SHALL OBTAIN AND FILE WITH THE DEPARTMENT OF PUBLIC WORKS COPIES OF A PERMIT TO EXCAVE IN COUNTY STREETS FROM THE CONSTRUCTION DIVISION OF THE DEPARTMENT OF PUBLIC WORKS. PERMIT CHARGE FOUR DOLLARS AND FEE TO THE DIRECTOR OF PUBLIC WORKS, ROOM 3, PRECINCT AVE., ALHAMBRA, CALIFORNIA 91803 - 8TH FLOOR, TO COVER THE COST OF CONSTRUCTION INSPECTION AND RECORD PLANS.

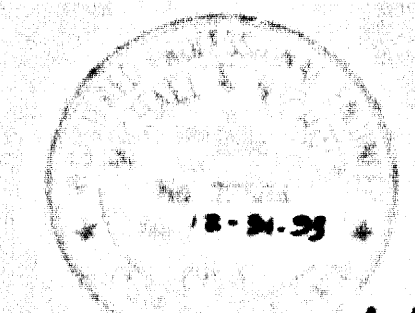
CONSTRUCTION NOTES:

1. WORK SHALL BE CONSTRUCTED ACCORDING TO THE STANDARD SPECIFICATIONS FOR P.L.C. WORKS CONSTRUCTION AND DEPARTMENT OF PUBLIC WORKS SPECIAL PROVISIONS FOR THE CONSTRUCTION OF SANITARY SEWERS DATED SEPTEMBER 21, 1958 AND SHALL BE PROTECTED UNDER THE PROVISIONS OF THE DEPARTMENT OF PUBLIC WORKS.
2. THE CONTRACTOR SHALL NOTIFY THE CONSTRUCTION DIVISION BY TELEPHONE (213) 638-1161 AT LEAST TWENTY-FOUR HOURS BEFORE STARTING ANY WORK UNDER THIS CONTRACT.
3. HOUSE LATERALS TO BE CONSTRUCTED WITH INVERTS AT PROPERTY LINE 8 FEET BELOW CURB GRADE EXCEPT AS NOTED.
4. VEE OR VEE BRANCHES MAY BE USED FOR CONNECTIONS TO MAINLINE SEWERS EXCEPT AS NOTED.
5. ALL STRUCTURES SHALL BE EITHER BRICK SEWER MANHOLES PER 8-8 OR PRECAST CONCRETE SEWER MANHOLES PER 8-8 EXCEPT AS NOTED.
6. PROTECT STAKES ON THE PROPERTY LINE OR PROPERTY LINES PRODUCED AT RIGHT ANGLES TO THE SEWER LINE AT THE CENTERLINE OF EACH MANHOLE.
7. MANHOLE TOPS IN UNIMPROVED AREAS TO BE 34 INCHES ABOVE FINISHED GRADE.
8. ALL RECESSED JOINTS SHALL BE THE TYPE OF JOINT AS SPECIFIED IN STANDARD SPECIFICATIONS SECTION 8-8.2.
9. IF A POWER POLE IS WITHIN THREE FEET OF THE SEWER THE SEWER SHALL BE ENCASED PER 8-8.2.2 CASE 1 TWO FEET FOR EACH SIDE FROM THE POINT OF INTERFERENCE.
10. IF DURING THE COURSE OF CONSTRUCTION IT IS DETERMINED THAT THERE IS LESS THAN FOUR FEET OF COVER OVER THE TOP OF A MAIN LINE OR HOUSE LATERAL 12 INCHES OR MORE IN DIAMETER ON THE PLANS, THE MAIN SHALL BE ENCASED PER 8-8.2.2 CASE 2 UNLESS OTHERWISE APPROVED BY THE DIRECTOR OF PUBLIC WORKS.
11. ALL JOINTS BE PRECAST CONCRETE PIPE AND STAFFED CLEAR PIPE SHALL BE MADE WITH A RUBBER SLEEVE JOINT TYPE "C" OR "D" 18 INCH DIAMETER IF NECESSARY PER STANDARD SPECIFICATIONS SECTION 8-8.2.
12. SEWERS TO BE TESTED FOR LEAKAGE PER SECTION 8-8.1 OF THE STANDARD SPECIFICATIONS AND SPECIAL PROVISIONS.
13. INSUFFICIENCY ALL TRENCHES WITHIN FIVE FEET OF THE SURFACE SHALL BE MET BY LOS ANGELES COUNTY PUBLIC WORKS OR CALIFORNIA STATE HIGHWAY DEPARTMENT IN ACCORDANCE WITH PERMITS.
14. FULL COMPLIANCE WITH SECTION 8-8.1 OF THE STANDARD SPECIFICATIONS WILL BE REQUIRED FOR BACKFILL IN STREETS. CERTIFICATION OF BACKFILL COMPACTION AND LAND EQUALIZATION BY A QUALIFIED INDIVIDUAL SHALL BE PROVIDED BY THE CONTRACTOR PRIOR TO THE DRAINAGE OF ANY TRENCH.
15. SPECIAL BACKFILL IN EXISTING CONSTRUCTION SHALL BE BACKFILLED WITH SAND AND PLACED OTHER THAN 30 INCHES TO ACHIEVE THE NATURAL OR BE BACKFILLED WITH OTHER MATERIAL APPROVED FOR THIS DEVELOPMENT BY THE CONSTRUCTION DIVISION OF PUBLIC WORKS. ALL BACKFILL AND OTHER MATERIAL SHALL BE COMPACTED TO A MINIMUM OF 90% OF MAXIMUM DENSITY PER A 1 1/2" STD. METHOD OF TESTING BY A QUALIFIED ACCEPTABLE CERTIFICATION OF SUCH COMPACTION SHALL BE SUBMITTED TO THE CONSTRUCTION DIVISION OF PUBLIC WORKS OF THE COUNTY.

PROFILE ALIGNMENT AND GRADE OF
 SANITARY SEWERS
 TO BE CONSTRUCTED IN

PAGE 1

TRACT NO. 49409
 PRIVATE CONTRACT NO. 11159
 1706
 2 SHEETS, 3 PAGES



SCALE: HORIZ. 1" = 80'
 VERT. 1" = 40'

PREPARED IN THE OFFICES OF
 LANCO ENGINEERING
 1010 S. CRENSHAW BLVD., SUITE 200, TORRANCE, CA
 BY: M. J. [Signature]
 REG. C.E. NO. 22904

THE FOLLOWING LATEST REVISED STANDARD PLANS OR FILE IN THE OFFICE OF THE DEPARTMENT OF PUBLIC WORKS SHALL APPLY IN THE CONSTRUCTION OF THIS PROJECT:

STANDARD	8-1
MINIMUM PUBLIC SAFETY REQUIREMENTS	8-2
BRICK MANHOLE	8-3
STANDARD MANHOLE TOP	8-4
REINFORCED CONCRETE PIPE	8-5
CRACKING AND MEASUREMENT	8-6
PIPE ON THE SURFACE	8-7
ALLOWABLE TRENCH WIDTHS	8-8
LOCKING MANHOLE FRAME AND COVER	8-9
NON-REINFORCED PRECAST CONCRETE MANHOLE	8-10

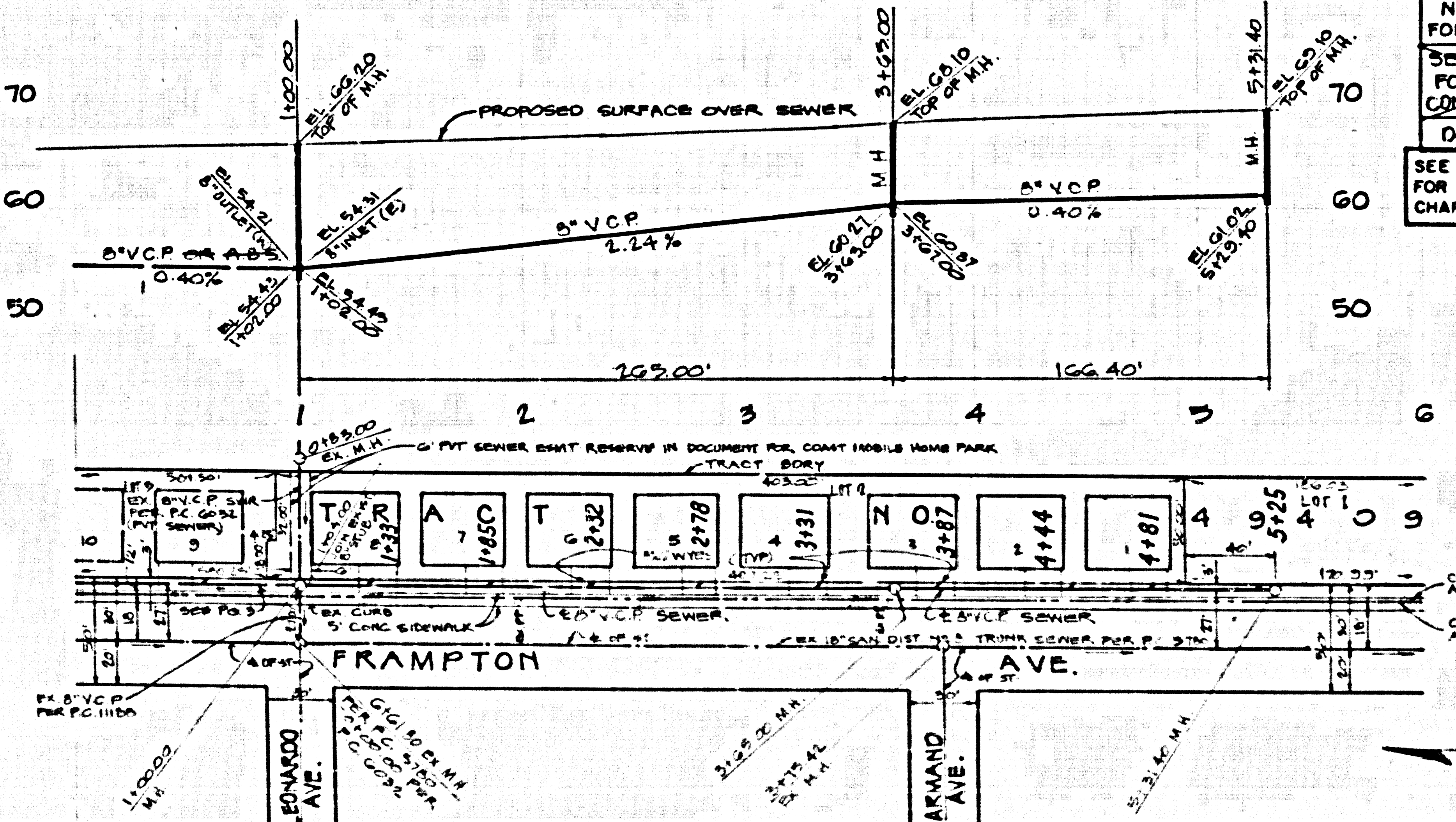
COUNTY OF LOS ANGELES, CALIFORNIA
 THOMAS A. TIDEMANSON, DIRECTOR OF PUBLIC WORKS
 CHARLES W. CARRY, CHIEF ENGINEER

APPROVED: [Signature] 9/17/79
 APPROVED: [Signature] 9/16/79

CHECKED: Tom Hayward 9/17/79
 REG. C.E. NO. 20373

LOMITA BLDG. DIST. 12

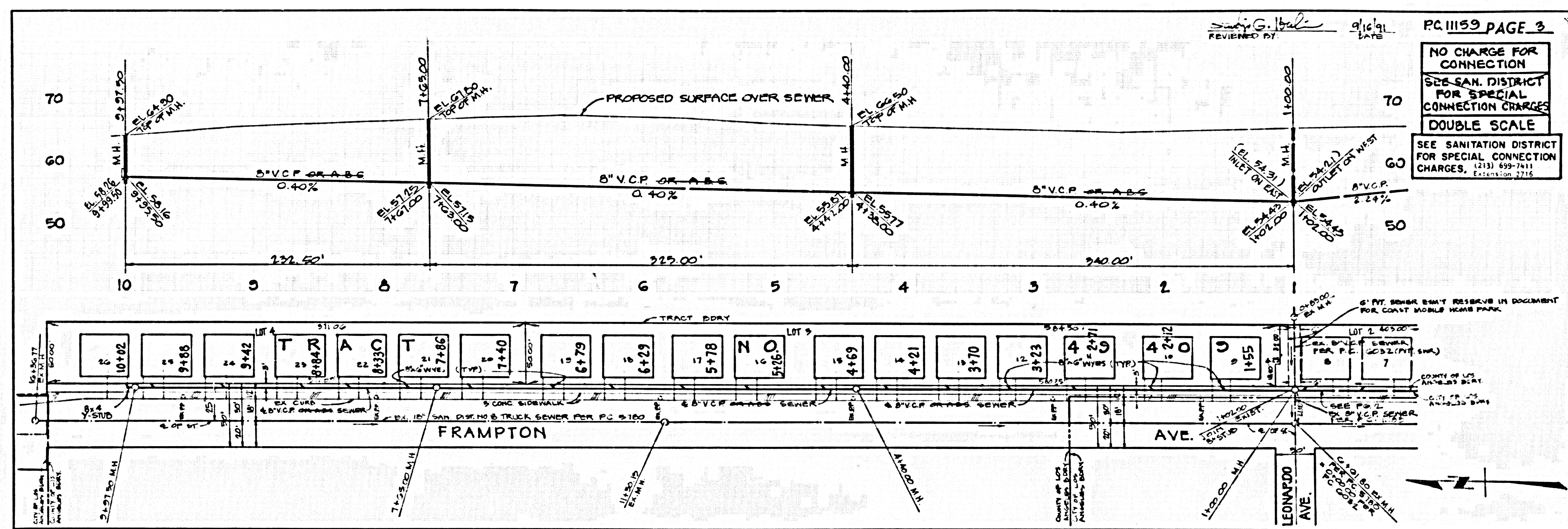
2111 29 0404 04 TRACT



FLOW IS TO BE MAINTAINED
 AT ALL TIMES

P.C. 11159 PAGE 2
 REVIEWED BY: [Signature] 9/16/79
 DATE: 9/16/79

NO CHARGE FOR CONNECTION
 SEE SAN. DIST. FOR SPECIAL CONNECTION CHARGES
 DOUBLE SCALE
 SEE SANITATION DISTRICT FOR SPECIAL CONNECTION CHARGES. (213) 638-1161



REVIEWED BY: *[Signature]* DATE: 9/16/91
 PC 11159 PAGE 3

NO CHARGE FOR CONNECTION
 SEE SAN. DISTRICT FOR SPECIAL CONNECTION CHARGES
 DOUBLE SCALE
 SEE SANITATION DISTRICT FOR SPECIAL CONNECTION CHARGES, (213) 899-7411 Extension 2715

PAGE