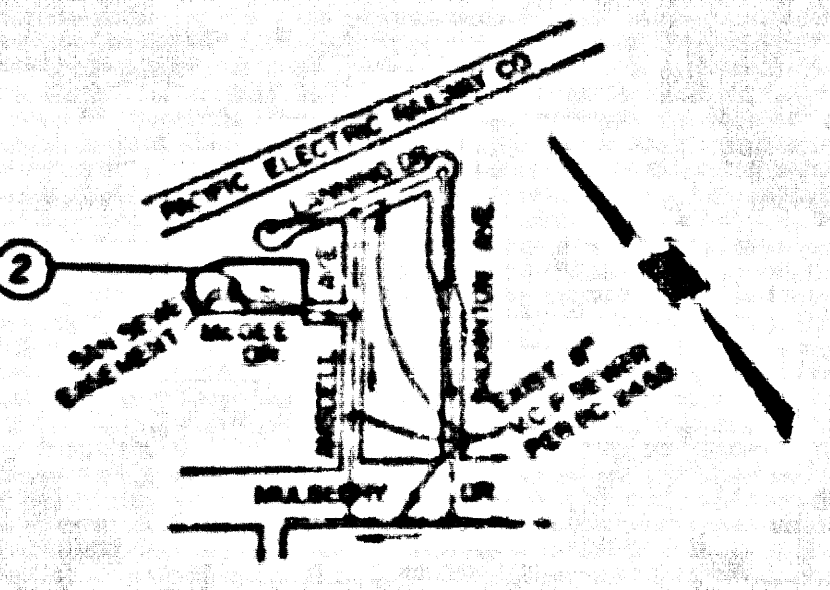


S.M. CY 2532 ELEV. 173.339
 CS MON IN WELL 12" DN ON OR NEAR
 C/L INT LAMBERT RD & PRINTER AVE
 MARKED (C) ENG MON RE 508318 ELY EDGE
 SANTA FE QUAD. 1982ADA



INDEX MAP
 P.C. 1164 TR. NO. 49785
 SCALE: 1"=600'
 THOMAS GUIDE PG 6 (E-2)
 NOTE: NUMBER IN CIRCLE INDICATES PAGE NUMBER

GENERAL NOTES:

- A SEWER CONTRACTOR SHALL BE RESPONSIBLE FOR OBTAINING ALL NECESSARY PERMITS AND RECORD PLANS TO THE DEPARTMENT OF PUBLIC WORKS AT THE PUBLIC WORKS COUNTY ENGINEERING OFFICE 575 ALHAMBRA AVENUE AT LEAST 72 HOURS BEFORE THE COMMENCEMENT OF WORK. THE CONTRACTOR SHALL BE RESPONSIBLE FOR OBTAINING ALL NECESSARY PERMITS AND RECORD PLANS TO THE DEPARTMENT OF PUBLIC WORKS AT THE PUBLIC WORKS COUNTY ENGINEERING OFFICE 575 ALHAMBRA AVENUE AT LEAST 72 HOURS BEFORE THE COMMENCEMENT OF WORK.
- BEFORE THE COMMENCEMENT OF WORK THE CONTRACTOR SHALL FILE A COPY OF THE STANDARD SPECIFICATIONS FOR PUBLIC WORKS CONSTRUCTION WITH THE DEPARTMENT OF PUBLIC WORKS AT THE PUBLIC WORKS COUNTY ENGINEERING OFFICE 575 ALHAMBRA AVENUE AT LEAST 72 HOURS BEFORE THE COMMENCEMENT OF WORK.
- APPROVAL OF THIS PLAN BY THE COUNTY ENGINEER DOES NOT CONSTITUTE AN ENDORSEMENT OR GUARANTEE OF THE ACCURACY OF THE INFORMATION OR THE QUALITY OF THE WORK OR THE SAFETY OF THE STRUCTURE OR THE LIFE OF THE PUBLIC.
- ALL WORK SHALL BE IN ACCORDANCE WITH THE STANDARD SPECIFICATIONS FOR PUBLIC WORKS CONSTRUCTION 1988 EDITION, AS AMENDED BY THE DEPARTMENT OF PUBLIC WORKS AT THE PUBLIC WORKS COUNTY ENGINEERING OFFICE 575 ALHAMBRA AVENUE AT LEAST 72 HOURS BEFORE THE COMMENCEMENT OF WORK.
- THE CONTRACTOR'S ATTENTION IS DIRECTED TO SECTION 104.01 OF THE STANDARD SPECIFICATIONS FOR PUBLIC WORKS CONSTRUCTION 1988 EDITION, WHICH RELATES TO THE SAFETY OF THE PUBLIC AND THE SAFETY OF THE CONTRACTOR'S PERSONNEL.
- ALL WORK SHALL BE IN ACCORDANCE WITH THE STANDARD SPECIFICATIONS FOR PUBLIC WORKS CONSTRUCTION 1988 EDITION, AS AMENDED BY THE DEPARTMENT OF PUBLIC WORKS AT THE PUBLIC WORKS COUNTY ENGINEERING OFFICE 575 ALHAMBRA AVENUE AT LEAST 72 HOURS BEFORE THE COMMENCEMENT OF WORK.
- ALL WORK SHALL BE IN ACCORDANCE WITH THE STANDARD SPECIFICATIONS FOR PUBLIC WORKS CONSTRUCTION 1988 EDITION, AS AMENDED BY THE DEPARTMENT OF PUBLIC WORKS AT THE PUBLIC WORKS COUNTY ENGINEERING OFFICE 575 ALHAMBRA AVENUE AT LEAST 72 HOURS BEFORE THE COMMENCEMENT OF WORK.
- ALL WORK SHALL BE IN ACCORDANCE WITH THE STANDARD SPECIFICATIONS FOR PUBLIC WORKS CONSTRUCTION 1988 EDITION, AS AMENDED BY THE DEPARTMENT OF PUBLIC WORKS AT THE PUBLIC WORKS COUNTY ENGINEERING OFFICE 575 ALHAMBRA AVENUE AT LEAST 72 HOURS BEFORE THE COMMENCEMENT OF WORK.
- ALL WORK SHALL BE IN ACCORDANCE WITH THE STANDARD SPECIFICATIONS FOR PUBLIC WORKS CONSTRUCTION 1988 EDITION, AS AMENDED BY THE DEPARTMENT OF PUBLIC WORKS AT THE PUBLIC WORKS COUNTY ENGINEERING OFFICE 575 ALHAMBRA AVENUE AT LEAST 72 HOURS BEFORE THE COMMENCEMENT OF WORK.
- ALL WORK SHALL BE IN ACCORDANCE WITH THE STANDARD SPECIFICATIONS FOR PUBLIC WORKS CONSTRUCTION 1988 EDITION, AS AMENDED BY THE DEPARTMENT OF PUBLIC WORKS AT THE PUBLIC WORKS COUNTY ENGINEERING OFFICE 575 ALHAMBRA AVENUE AT LEAST 72 HOURS BEFORE THE COMMENCEMENT OF WORK.
- ALL WORK SHALL BE IN ACCORDANCE WITH THE STANDARD SPECIFICATIONS FOR PUBLIC WORKS CONSTRUCTION 1988 EDITION, AS AMENDED BY THE DEPARTMENT OF PUBLIC WORKS AT THE PUBLIC WORKS COUNTY ENGINEERING OFFICE 575 ALHAMBRA AVENUE AT LEAST 72 HOURS BEFORE THE COMMENCEMENT OF WORK.
- ALL WORK SHALL BE IN ACCORDANCE WITH THE STANDARD SPECIFICATIONS FOR PUBLIC WORKS CONSTRUCTION 1988 EDITION, AS AMENDED BY THE DEPARTMENT OF PUBLIC WORKS AT THE PUBLIC WORKS COUNTY ENGINEERING OFFICE 575 ALHAMBRA AVENUE AT LEAST 72 HOURS BEFORE THE COMMENCEMENT OF WORK.
- ALL WORK SHALL BE IN ACCORDANCE WITH THE STANDARD SPECIFICATIONS FOR PUBLIC WORKS CONSTRUCTION 1988 EDITION, AS AMENDED BY THE DEPARTMENT OF PUBLIC WORKS AT THE PUBLIC WORKS COUNTY ENGINEERING OFFICE 575 ALHAMBRA AVENUE AT LEAST 72 HOURS BEFORE THE COMMENCEMENT OF WORK.
- ALL WORK SHALL BE IN ACCORDANCE WITH THE STANDARD SPECIFICATIONS FOR PUBLIC WORKS CONSTRUCTION 1988 EDITION, AS AMENDED BY THE DEPARTMENT OF PUBLIC WORKS AT THE PUBLIC WORKS COUNTY ENGINEERING OFFICE 575 ALHAMBRA AVENUE AT LEAST 72 HOURS BEFORE THE COMMENCEMENT OF WORK.
- ALL WORK SHALL BE IN ACCORDANCE WITH THE STANDARD SPECIFICATIONS FOR PUBLIC WORKS CONSTRUCTION 1988 EDITION, AS AMENDED BY THE DEPARTMENT OF PUBLIC WORKS AT THE PUBLIC WORKS COUNTY ENGINEERING OFFICE 575 ALHAMBRA AVENUE AT LEAST 72 HOURS BEFORE THE COMMENCEMENT OF WORK.

CONSTRUCTION NOTES:

- THE CONTRACTOR SHALL BE RESPONSIBLE FOR OBTAINING ALL NECESSARY PERMITS AND RECORD PLANS TO THE DEPARTMENT OF PUBLIC WORKS AT THE PUBLIC WORKS COUNTY ENGINEERING OFFICE 575 ALHAMBRA AVENUE AT LEAST 72 HOURS BEFORE THE COMMENCEMENT OF WORK.
- BEFORE THE COMMENCEMENT OF WORK THE CONTRACTOR SHALL FILE A COPY OF THE STANDARD SPECIFICATIONS FOR PUBLIC WORKS CONSTRUCTION WITH THE DEPARTMENT OF PUBLIC WORKS AT THE PUBLIC WORKS COUNTY ENGINEERING OFFICE 575 ALHAMBRA AVENUE AT LEAST 72 HOURS BEFORE THE COMMENCEMENT OF WORK.
- APPROVAL OF THIS PLAN BY THE COUNTY ENGINEER DOES NOT CONSTITUTE AN ENDORSEMENT OR GUARANTEE OF THE ACCURACY OF THE INFORMATION OR THE QUALITY OF THE WORK OR THE SAFETY OF THE STRUCTURE OR THE LIFE OF THE PUBLIC.
- ALL WORK SHALL BE IN ACCORDANCE WITH THE STANDARD SPECIFICATIONS FOR PUBLIC WORKS CONSTRUCTION 1988 EDITION, AS AMENDED BY THE DEPARTMENT OF PUBLIC WORKS AT THE PUBLIC WORKS COUNTY ENGINEERING OFFICE 575 ALHAMBRA AVENUE AT LEAST 72 HOURS BEFORE THE COMMENCEMENT OF WORK.
- THE CONTRACTOR'S ATTENTION IS DIRECTED TO SECTION 104.01 OF THE STANDARD SPECIFICATIONS FOR PUBLIC WORKS CONSTRUCTION 1988 EDITION, WHICH RELATES TO THE SAFETY OF THE PUBLIC AND THE SAFETY OF THE CONTRACTOR'S PERSONNEL.
- ALL WORK SHALL BE IN ACCORDANCE WITH THE STANDARD SPECIFICATIONS FOR PUBLIC WORKS CONSTRUCTION 1988 EDITION, AS AMENDED BY THE DEPARTMENT OF PUBLIC WORKS AT THE PUBLIC WORKS COUNTY ENGINEERING OFFICE 575 ALHAMBRA AVENUE AT LEAST 72 HOURS BEFORE THE COMMENCEMENT OF WORK.
- ALL WORK SHALL BE IN ACCORDANCE WITH THE STANDARD SPECIFICATIONS FOR PUBLIC WORKS CONSTRUCTION 1988 EDITION, AS AMENDED BY THE DEPARTMENT OF PUBLIC WORKS AT THE PUBLIC WORKS COUNTY ENGINEERING OFFICE 575 ALHAMBRA AVENUE AT LEAST 72 HOURS BEFORE THE COMMENCEMENT OF WORK.
- ALL WORK SHALL BE IN ACCORDANCE WITH THE STANDARD SPECIFICATIONS FOR PUBLIC WORKS CONSTRUCTION 1988 EDITION, AS AMENDED BY THE DEPARTMENT OF PUBLIC WORKS AT THE PUBLIC WORKS COUNTY ENGINEERING OFFICE 575 ALHAMBRA AVENUE AT LEAST 72 HOURS BEFORE THE COMMENCEMENT OF WORK.
- ALL WORK SHALL BE IN ACCORDANCE WITH THE STANDARD SPECIFICATIONS FOR PUBLIC WORKS CONSTRUCTION 1988 EDITION, AS AMENDED BY THE DEPARTMENT OF PUBLIC WORKS AT THE PUBLIC WORKS COUNTY ENGINEERING OFFICE 575 ALHAMBRA AVENUE AT LEAST 72 HOURS BEFORE THE COMMENCEMENT OF WORK.
- ALL WORK SHALL BE IN ACCORDANCE WITH THE STANDARD SPECIFICATIONS FOR PUBLIC WORKS CONSTRUCTION 1988 EDITION, AS AMENDED BY THE DEPARTMENT OF PUBLIC WORKS AT THE PUBLIC WORKS COUNTY ENGINEERING OFFICE 575 ALHAMBRA AVENUE AT LEAST 72 HOURS BEFORE THE COMMENCEMENT OF WORK.
- ALL WORK SHALL BE IN ACCORDANCE WITH THE STANDARD SPECIFICATIONS FOR PUBLIC WORKS CONSTRUCTION 1988 EDITION, AS AMENDED BY THE DEPARTMENT OF PUBLIC WORKS AT THE PUBLIC WORKS COUNTY ENGINEERING OFFICE 575 ALHAMBRA AVENUE AT LEAST 72 HOURS BEFORE THE COMMENCEMENT OF WORK.
- ALL WORK SHALL BE IN ACCORDANCE WITH THE STANDARD SPECIFICATIONS FOR PUBLIC WORKS CONSTRUCTION 1988 EDITION, AS AMENDED BY THE DEPARTMENT OF PUBLIC WORKS AT THE PUBLIC WORKS COUNTY ENGINEERING OFFICE 575 ALHAMBRA AVENUE AT LEAST 72 HOURS BEFORE THE COMMENCEMENT OF WORK.
- ALL WORK SHALL BE IN ACCORDANCE WITH THE STANDARD SPECIFICATIONS FOR PUBLIC WORKS CONSTRUCTION 1988 EDITION, AS AMENDED BY THE DEPARTMENT OF PUBLIC WORKS AT THE PUBLIC WORKS COUNTY ENGINEERING OFFICE 575 ALHAMBRA AVENUE AT LEAST 72 HOURS BEFORE THE COMMENCEMENT OF WORK.
- ALL WORK SHALL BE IN ACCORDANCE WITH THE STANDARD SPECIFICATIONS FOR PUBLIC WORKS CONSTRUCTION 1988 EDITION, AS AMENDED BY THE DEPARTMENT OF PUBLIC WORKS AT THE PUBLIC WORKS COUNTY ENGINEERING OFFICE 575 ALHAMBRA AVENUE AT LEAST 72 HOURS BEFORE THE COMMENCEMENT OF WORK.
- ALL WORK SHALL BE IN ACCORDANCE WITH THE STANDARD SPECIFICATIONS FOR PUBLIC WORKS CONSTRUCTION 1988 EDITION, AS AMENDED BY THE DEPARTMENT OF PUBLIC WORKS AT THE PUBLIC WORKS COUNTY ENGINEERING OFFICE 575 ALHAMBRA AVENUE AT LEAST 72 HOURS BEFORE THE COMMENCEMENT OF WORK.

PROFILE, ALIGNMENT AND GRADE OF
SANITARY SEWERS
 TO BE CONSTRUCTED IN
TRACT NO. 49785 53474
PRIVATE CONTRACT NO. 11164
 INDEX C-159
 1 SHEET 2 PAGES

SCALE: HORIZ. 1"=60' VERT. 1"=6'
 JANUARY, 1991

PREPARED IN THE OFFICES OF
CETECH ENGINEERING
 2301 PASEO DEL MAR, SUITE 100
 TORRANCE, CA 90503 TEL. NO. (213) 533-4850

BY: *Thomas A. Tidemanson*
 REG. C.E. NO. 33961 (EXP. 3-9-96)

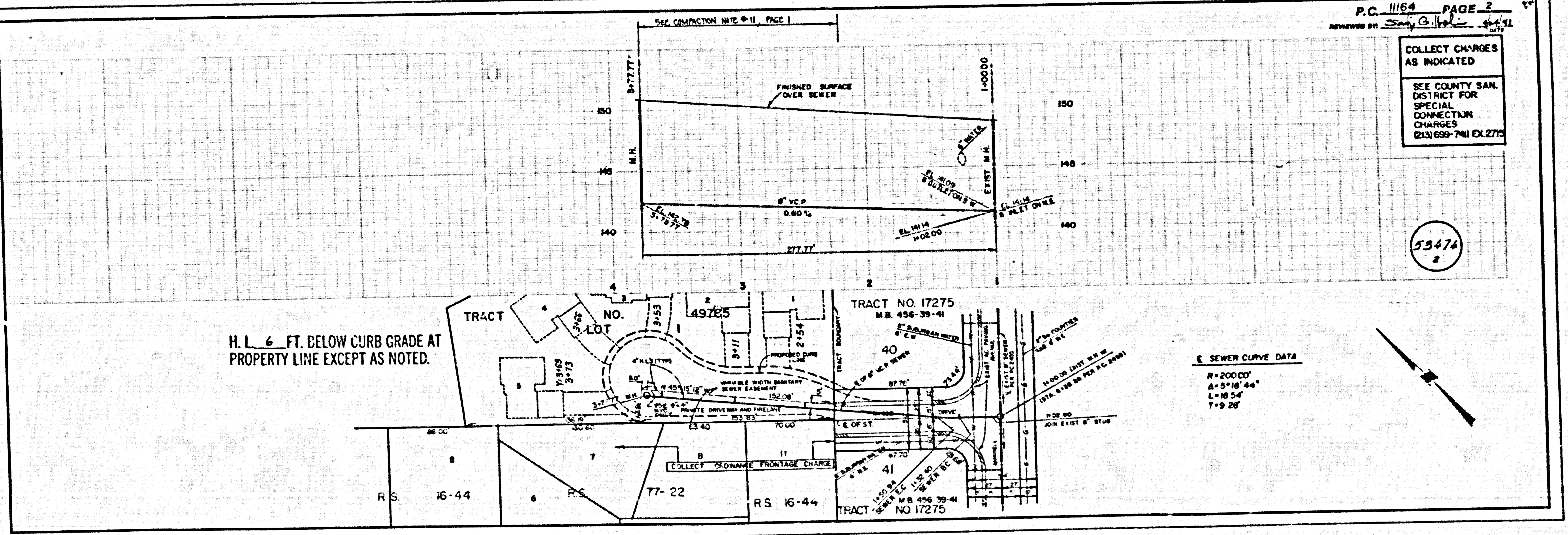
THE FOLLOWING LIST REVERSED STANDARD PLANS ON FILE IN THE OFFICE OF THE DEPARTMENT OF PUBLIC WORKS SHALL APPLY TO THE CONSTRUCTION OF THIS PROJECT:

STANDARD PUBLIC SAFETY REGULATIONS	0-1
STANDARD SPECIFICATIONS FOR CONCRETE	0-2
STANDARD SPECIFICATIONS FOR STEEL	0-3
STANDARD SPECIFICATIONS FOR WOOD	0-4
STANDARD SPECIFICATIONS FOR BRICK	0-5
STANDARD SPECIFICATIONS FOR PLASTER	0-6
STANDARD SPECIFICATIONS FOR PAINT	0-7
STANDARD SPECIFICATIONS FOR ROOFING	0-8
STANDARD SPECIFICATIONS FOR FLOORING	0-9
STANDARD SPECIFICATIONS FOR MECHANICAL	0-10
STANDARD SPECIFICATIONS FOR ELECTRICAL	0-11
STANDARD SPECIFICATIONS FOR PLUMBING	0-12
STANDARD SPECIFICATIONS FOR HEATING	0-13
STANDARD SPECIFICATIONS FOR AIR CONDITIONING	0-14
STANDARD SPECIFICATIONS FOR ELEVATORS	0-15
STANDARD SPECIFICATIONS FOR RAILROADS	0-16
STANDARD SPECIFICATIONS FOR AIRPORTS	0-17
STANDARD SPECIFICATIONS FOR MARINE	0-18
STANDARD SPECIFICATIONS FOR HIGHWAYS	0-19
STANDARD SPECIFICATIONS FOR BRIDGES	0-20
STANDARD SPECIFICATIONS FOR TUNNELS	0-21
STANDARD SPECIFICATIONS FOR CANALS	0-22
STANDARD SPECIFICATIONS FOR DAMS	0-23
STANDARD SPECIFICATIONS FOR POWER	0-24
STANDARD SPECIFICATIONS FOR TELECOMMUNICATIONS	0-25
STANDARD SPECIFICATIONS FOR TRANSPORTATION	0-26
STANDARD SPECIFICATIONS FOR UTILITIES	0-27
STANDARD SPECIFICATIONS FOR WATER SUPPLY	0-28
STANDARD SPECIFICATIONS FOR WASTE DISPOSAL	0-29
STANDARD SPECIFICATIONS FOR ENVIRONMENTAL	0-30
STANDARD SPECIFICATIONS FOR HISTORIC PRESERVATION	0-31
STANDARD SPECIFICATIONS FOR LAND USE	0-32
STANDARD SPECIFICATIONS FOR ZONING	0-33
STANDARD SPECIFICATIONS FOR PLANNING	0-34
STANDARD SPECIFICATIONS FOR DESIGN	0-35
STANDARD SPECIFICATIONS FOR CONSTRUCTION	0-36
STANDARD SPECIFICATIONS FOR MAINTENANCE	0-37
STANDARD SPECIFICATIONS FOR OPERATION	0-38
STANDARD SPECIFICATIONS FOR REPAIR	0-39
STANDARD SPECIFICATIONS FOR REPLACEMENT	0-40
STANDARD SPECIFICATIONS FOR RENOVATION	0-41
STANDARD SPECIFICATIONS FOR RESTORATION	0-42
STANDARD SPECIFICATIONS FOR RECONSTRUCTION	0-43
STANDARD SPECIFICATIONS FOR REDEMPTION	0-44
STANDARD SPECIFICATIONS FOR REDEVELOPMENT	0-45
STANDARD SPECIFICATIONS FOR REUSE	0-46
STANDARD SPECIFICATIONS FOR RECYCLING	0-47
STANDARD SPECIFICATIONS FOR REPAIR AND MAINTENANCE	0-48
STANDARD SPECIFICATIONS FOR REPLACEMENT AND RENOVATION	0-49
STANDARD SPECIFICATIONS FOR RESTORATION AND RECONSTRUCTION	0-50
STANDARD SPECIFICATIONS FOR REDEMPTION AND REDEVELOPMENT	0-51
STANDARD SPECIFICATIONS FOR REUSE AND RECYCLING	0-52

COUNTY OF LOS ANGELES, CALIFORNIA
 THOMAS A. TIDEMANSON, DIRECTOR OF PUBLIC WORKS
 CHARLES W. CARRY, CHIEF ENGINEER

APPROVED: *Thomas A. Tidemanson* 1/15/91
 CHECKED: *Thomas A. Tidemanson* 1/15/91
 REG. C.E. NO. 33961

LA PUENTE BLDG. DIST. 2



SEWER CURVE DATA

R=200.00'
A=5°16'44"
L=85.4'
T=9.28'

P.C. 11164 PAGE 2
 reviewed by *Sally C. Helle* 1/15/91

COLLECT CHARGES AS INDICATED
 SEE COUNTY SAN. DISTRICT FOR SPECIAL CONNECTION CHARGES
 (213) 699-7411 EX. 2715

53474

1
 PC 11164
 28749 ON TRACT