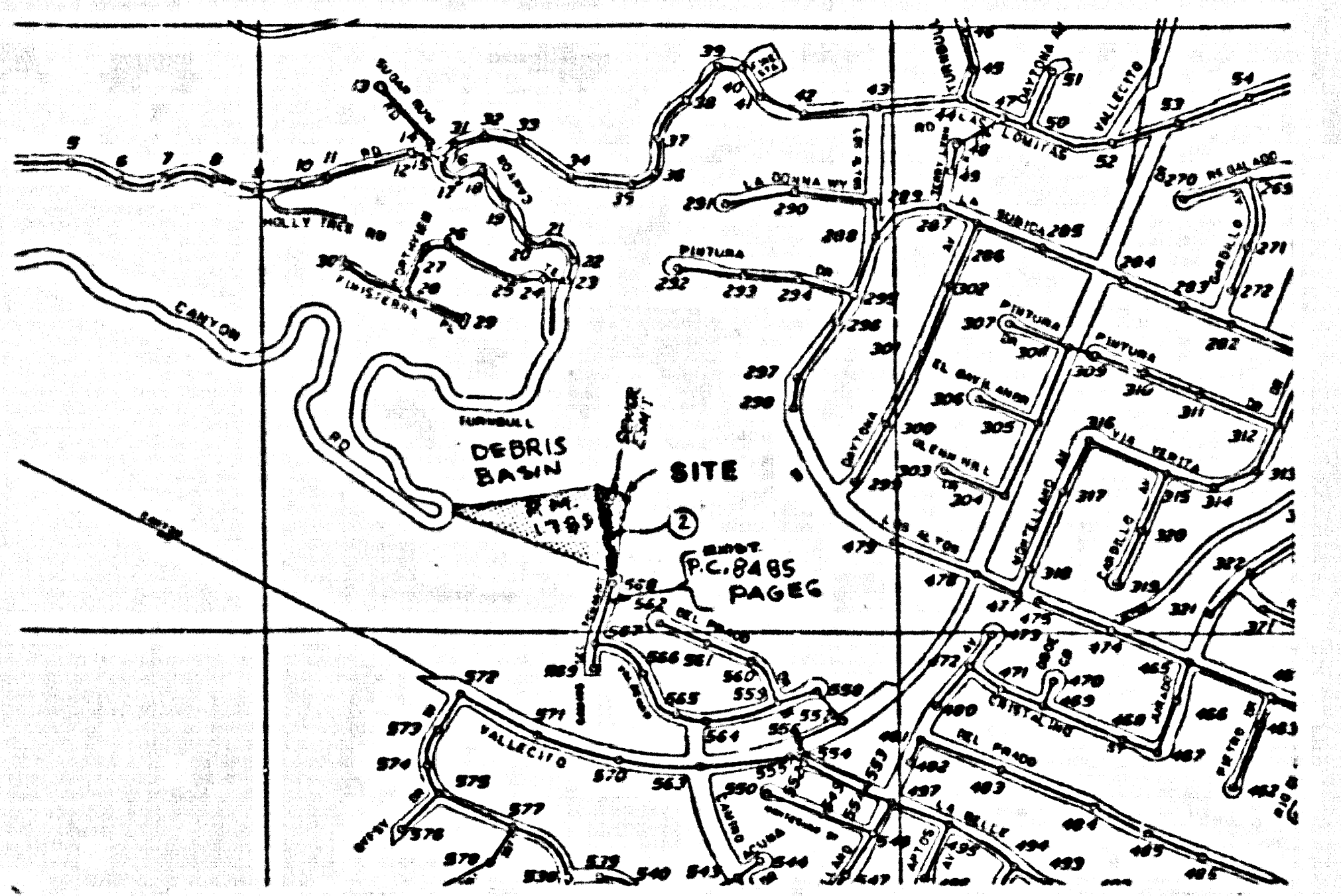


B.M. B.S. 1010 ELEV. 592.650  
 R.D.M. T.M. N. CURB 1 FT. E. B.C.R. D.  
 N.E. COR. LOS ALTOS DR. & VALLECITO DR.  
 30 FT. N. 466 FT. E. & INT.  
 WHITTIER QUAD. 19 00



INDEX MAP  
 PARCEL MAP 17898  
 P.C. 11173  
 T.G. PG. 85 C/3 SCALE: 1" = 600'

NO CONNECTION FOR THE DISPOSAL OF INDUSTRIAL WASTES SHALL BE MADE TO SEWERS SHOWN ON THESE DRAWINGS UNTIL A PERMIT FOR INDUSTRIAL WASTEWATER DISCHARGE HAS BEEN ISSUED BY THE SANITATION DISTRICTS FOR SAID CONNECTION.

BEFORE BREAKING INTO OR CONSTRUCTION ON A COUNTY SANITATION DISTRICT SEWER AND PRIOR TO FINAL ACCEPTANCE OF THE PROJECT, SANITATION DISTRICT INSPECTOR SHALL BE NOTIFIED BY PHONE (818) 962-8605 SO THAT REQUIRED INSPECTION CAN BE MADE.

**GENERAL NOTES:**

- ELEVATIONS ARE IN FEET UNLESS OTHERWISE SPECIFIED.
- NO CONNECTIONS SHALL BE MADE TO SEWERS UNLESS THE APPROVAL OF THE DIRECTOR OF PUBLIC WORKS HAS BEEN OBTAINED.
- CONNECTIONS TO SEWERS SHALL BE MADE AT THE SEWER MANHOLE OR AT THE POINT OF ENTRY TO THE SEWER MAIN.
- CONNECTIONS TO SEWERS SHALL BE MADE AT THE SEWER MANHOLE OR AT THE POINT OF ENTRY TO THE SEWER MAIN.
- CONNECTIONS TO SEWERS SHALL BE MADE AT THE SEWER MANHOLE OR AT THE POINT OF ENTRY TO THE SEWER MAIN.
- CONNECTIONS TO SEWERS SHALL BE MADE AT THE SEWER MANHOLE OR AT THE POINT OF ENTRY TO THE SEWER MAIN.
- CONNECTIONS TO SEWERS SHALL BE MADE AT THE SEWER MANHOLE OR AT THE POINT OF ENTRY TO THE SEWER MAIN.
- CONNECTIONS TO SEWERS SHALL BE MADE AT THE SEWER MANHOLE OR AT THE POINT OF ENTRY TO THE SEWER MAIN.
- CONNECTIONS TO SEWERS SHALL BE MADE AT THE SEWER MANHOLE OR AT THE POINT OF ENTRY TO THE SEWER MAIN.
- CONNECTIONS TO SEWERS SHALL BE MADE AT THE SEWER MANHOLE OR AT THE POINT OF ENTRY TO THE SEWER MAIN.
- CONNECTIONS TO SEWERS SHALL BE MADE AT THE SEWER MANHOLE OR AT THE POINT OF ENTRY TO THE SEWER MAIN.
- CONNECTIONS TO SEWERS SHALL BE MADE AT THE SEWER MANHOLE OR AT THE POINT OF ENTRY TO THE SEWER MAIN.
- CONNECTIONS TO SEWERS SHALL BE MADE AT THE SEWER MANHOLE OR AT THE POINT OF ENTRY TO THE SEWER MAIN.
- CONNECTIONS TO SEWERS SHALL BE MADE AT THE SEWER MANHOLE OR AT THE POINT OF ENTRY TO THE SEWER MAIN.
- CONNECTIONS TO SEWERS SHALL BE MADE AT THE SEWER MANHOLE OR AT THE POINT OF ENTRY TO THE SEWER MAIN.

**CONSTRUCTION NOTES:**

- CONTRACTOR SHALL BE RESPONSIBLE FOR OBTAINING ALL NECESSARY PERMITS AND APPROVALS.
- CONTRACTOR SHALL BE RESPONSIBLE FOR OBTAINING ALL NECESSARY PERMITS AND APPROVALS.
- CONTRACTOR SHALL BE RESPONSIBLE FOR OBTAINING ALL NECESSARY PERMITS AND APPROVALS.
- CONTRACTOR SHALL BE RESPONSIBLE FOR OBTAINING ALL NECESSARY PERMITS AND APPROVALS.
- CONTRACTOR SHALL BE RESPONSIBLE FOR OBTAINING ALL NECESSARY PERMITS AND APPROVALS.
- CONTRACTOR SHALL BE RESPONSIBLE FOR OBTAINING ALL NECESSARY PERMITS AND APPROVALS.
- CONTRACTOR SHALL BE RESPONSIBLE FOR OBTAINING ALL NECESSARY PERMITS AND APPROVALS.
- CONTRACTOR SHALL BE RESPONSIBLE FOR OBTAINING ALL NECESSARY PERMITS AND APPROVALS.
- CONTRACTOR SHALL BE RESPONSIBLE FOR OBTAINING ALL NECESSARY PERMITS AND APPROVALS.
- CONTRACTOR SHALL BE RESPONSIBLE FOR OBTAINING ALL NECESSARY PERMITS AND APPROVALS.
- CONTRACTOR SHALL BE RESPONSIBLE FOR OBTAINING ALL NECESSARY PERMITS AND APPROVALS.
- CONTRACTOR SHALL BE RESPONSIBLE FOR OBTAINING ALL NECESSARY PERMITS AND APPROVALS.
- CONTRACTOR SHALL BE RESPONSIBLE FOR OBTAINING ALL NECESSARY PERMITS AND APPROVALS.
- CONTRACTOR SHALL BE RESPONSIBLE FOR OBTAINING ALL NECESSARY PERMITS AND APPROVALS.
- CONTRACTOR SHALL BE RESPONSIBLE FOR OBTAINING ALL NECESSARY PERMITS AND APPROVALS.



PROFILE, ALIGNMENT AND GRADE OF  
**SANITARY SEWERS**  
 TO BE CONSTRUCTED IN  
 PARCEL MAP 17898

PRIVATE CONTRACT NO. 11173  
 INDEX: 2173  
 1 SHEET OF 2 PAGES

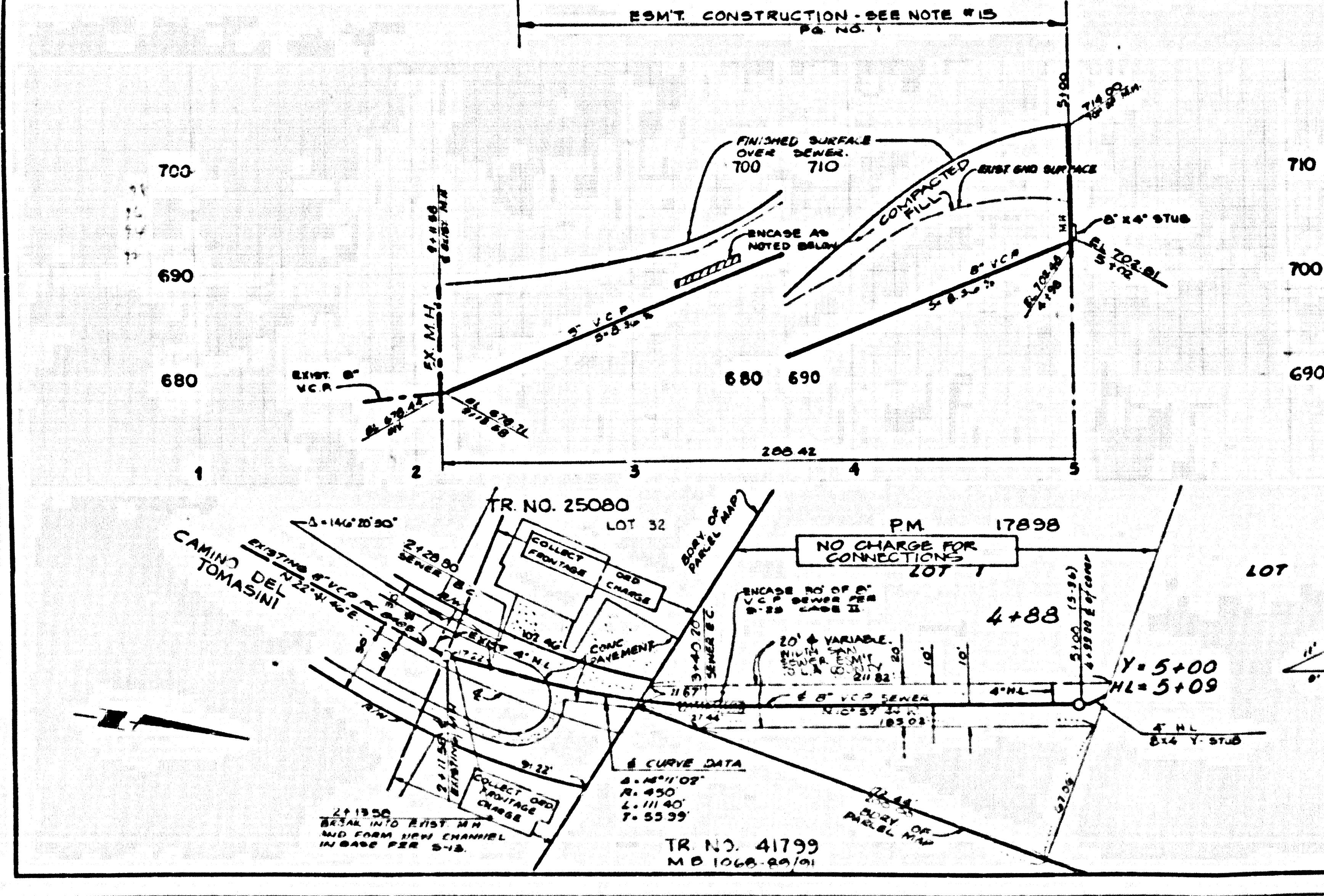
SCALE: 1" = 60'  
 FEBRUARY 24, 1991  
 PREPARED IN THE OFFICES OF  
**KEMMERER ENGINEERING CO., INC.**  
 8705 S. WINTER AVE., WHITTIER, CA. 90601  
 BY: *Rafael P. Pican*  
 REG. CE NO. 13319

THE FOLLOWING LIST IS THE STANDARD PLANS ON FILE IN THE OFFICE OF THE DEPARTMENT OF PUBLIC WORKS WHICH SHALL APPLY TO THE CONSTRUCTION OF THIS PROJECT:

1. SEWER MANHOLE	5-1
2. SEWER MANHOLE WITH PUBLIC SAFETY REQUIREMENTS	5-2
3. SEWER MANHOLE WITH PUBLIC SAFETY REQUIREMENTS AND 18" COVER	5-3
4. SEWER MANHOLE WITH PUBLIC SAFETY REQUIREMENTS AND 18" COVER AND 18" CURB	5-4
5. SEWER MANHOLE WITH PUBLIC SAFETY REQUIREMENTS AND 18" COVER AND 18" CURB AND 18" WALKWAY	5-5
6. SEWER MANHOLE WITH PUBLIC SAFETY REQUIREMENTS AND 18" COVER AND 18" CURB AND 18" WALKWAY AND 18" SIDEWALK	5-6
7. SEWER MANHOLE WITH PUBLIC SAFETY REQUIREMENTS AND 18" COVER AND 18" CURB AND 18" WALKWAY AND 18" SIDEWALK AND 18" DRIVEWAY	5-7
8. SEWER MANHOLE WITH PUBLIC SAFETY REQUIREMENTS AND 18" COVER AND 18" CURB AND 18" WALKWAY AND 18" SIDEWALK AND 18" DRIVEWAY AND 18" DRIVEWAY CURB	5-8
9. SEWER MANHOLE WITH PUBLIC SAFETY REQUIREMENTS AND 18" COVER AND 18" CURB AND 18" WALKWAY AND 18" SIDEWALK AND 18" DRIVEWAY AND 18" DRIVEWAY CURB AND 18" DRIVEWAY WALKWAY	5-9
10. SEWER MANHOLE WITH PUBLIC SAFETY REQUIREMENTS AND 18" COVER AND 18" CURB AND 18" WALKWAY AND 18" SIDEWALK AND 18" DRIVEWAY AND 18" DRIVEWAY CURB AND 18" DRIVEWAY WALKWAY AND 18" DRIVEWAY WALKWAY CURB	5-10

COUNTY OF LOS ANGELES, CALIFORNIA  
 THOMAS A. TIDEMANSON  
 DIRECTOR OF PUBLIC WORKS  
 APPROVED: *Dean J. [Signature]* 10/10/91  
 CHECKED: *Thomas [Signature]* 10/10/91  
 REG. CE NO. 20173  
 S.A. PVENTE BLDG. DIST. 2

BC 11173



NO CHARGE FOR CONNECTIONS

4+88  
 4+99  
 Y=5+00  
 NL=3+09

TR. NO. 25080  
 LOT 32  
 TR. NO. 41799  
 M.D. 1068 28/01

BC 11173 PAGE 2  
 10/10/91  
 REVIEWED BY: *Solo G. [Signature]*  
 DATE: 10/10/91  
 COLLECT CHARGES AS INDICATED  
 SEE COUNTY SAN. DIST. FOR SPECIAL CONNECTION CHARGES (S.D. 1717)  
 DOUBLE SCALE

53623