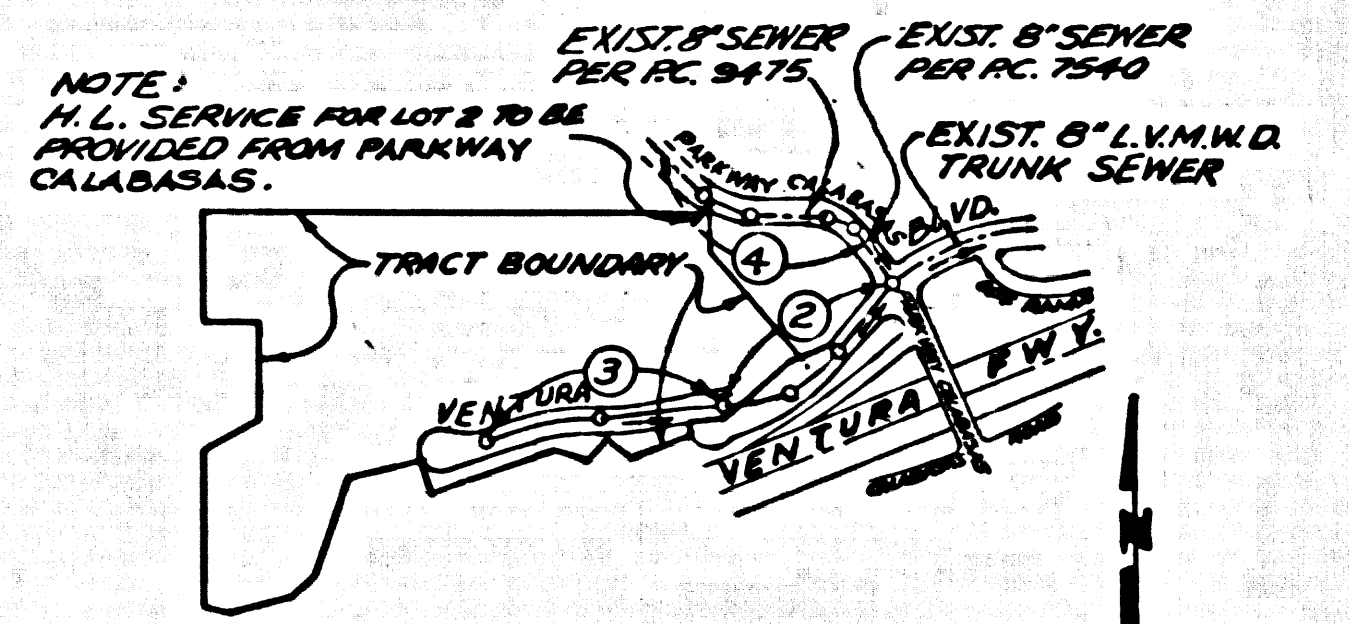


B.M. CY 9040 ELEV 1005.931
 R.D. B.M. TAG IN CURB, 3 FEET SOUTH OF B.C.R. -
 55 FEET SOUTH AND 44 FEET WEST OF CENTER-
 LINE INTERSECTION OF CALABASAS ROAD AND
 PARKWAY CALABASAS.
MALIBU QUAD. 19 82



INDEX MAP
TRACT NO. 35425
P.C. 11190
THOMAS GUIDE PG. 559-D-4
SCALE: 1" = 600'
S-1191

NOTE:
 1. NUMBERS IN CIRCLES INDICATE PAGE NUMBERS.

DOUBLE SCALE

PRIVATE ENGINEERS NOTICE TO CONTRACTORS

THE EXISTENCE AND LOCATION OF ANY UNDERGROUND UTILITY PIPES OR STRUCTURES SHOWN ON THESE PLANS ARE OBTAINED BY SEARCH OF THE AVAILABLE RECORDS, TO THE BEST OF OUR KNOWLEDGE THERE ARE NO EXISTING UTILITIES EXCEPT AS SHOWN ON THESE PLANS. THE CONTRACTOR IS REQUIRED TO TAKE DUE PRECAUTIONARY MEASURES TO PROTECT THE UTILITY LINES SHOWN AND ANY OTHER LINES NOT OF RECORD OR NOT SHOWN ON THESE PLANS. PRIOR TO EXCAVATION THE CONTRACTOR SHALL CALL TOLL FREE 1-800-422-4193 TO VERIFY THE UNDERGROUND LOCATION OF GAS AND TELEPHONE LINES.

42705 **2-23-00**
 R.C.E. NO. DATE

STORMWATER POLLUTION CONTROL REQUIREMENTS FOR SEWER CONSTRUCTION.

1. ERODED SEDIMENTS AND OTHER POLLUTANTS MUST BE RETAINED ON SITE AND MAY NOT BE TRANSPORTED FROM THE SITE VIA FUM, SWALE, FACE DRAIN, INTERIOR DRAINAGE OFFSET, OR POND.
2. STRUCTURE OF SHIELD AND OTHER OBSTRUCTION RELATED MATERIALS MUST BE PROTECTED FROM BEING TRANSPORTED FROM THE SITE BY FUMS OR WATER.
3. FUEL, OIL, SOLVENTS, AND OTHER TOXIC MATERIALS MUST BE STORED IN ACCORDANCE WITH THEIR LISTING AND ARE NOT TO UNPROTECTIVE THE SOIL AND WATER TABLES. ALL APPROVED STORAGE CONTAINERS MUST BE PROTECTED FROM THE WEATHER. SPILLS MUST BE CLEANED UP IMMEDIATELY AND DISPOSED OF IN A PROPER MANNER. SPILLS MAY NOT BE REUSED AND DISPOSED.
4. CHECKS ON WASTE CONCRETE MAY BE WASHED INTO THE PUBLIC MAIN OR ANY OTHER DRAINAGE SYSTEM. PROVISIONS SHALL BE MADE TO RETURN CONCRETE WASTES TO SITE OFFICE. THEY CAN BE DISPOSED OF AS SOLID WASTE.
5. TRUCKS AND CONSTRUCTION RELATED SOLID WASTES MUST BE WASHED INTO A COVERED RECEPTACLE TO PREVENT CONTAMINATION OF RAIN WATER AND DISPERSED BY WIND.
6. SEDIMENTS AND OTHER MATERIALS MAY NOT BE TRUCKED FROM THE SITE BY VEHICLE TRAFFIC. THE CONSTRUCTION DISTURBANCE REVISIONS MUST BE ESTABLISHED TO BE IN IMMEDIATE REMEDIATION AND NOT BE WASHED DOWN BY RAIN OR OTHER WASTE.
7. ANY SLIPS WITH DISTURBED SOILS ON DIVISION OF VEGETATION MUST BE STABILIZED SO AS TO INHIBIT EROSION BY WIND AND WATER.
8. CONSTRUCTION OPERATIONS:
 - ESC01 - SCHEDULING
 - ESC02 - PRESERVATION OF EXISTING VEGETATION
 - ESC03 - SEEDING AND PLANTING
 - ESC04 - MULCHING
 - ESC05 - EROSION CONTROL
 - ESC06 - BEST PRACTICES AND PRACTICES
 - ESC07 - BEST PRACTICES
 - ESC08 - TEMPORARY STREAM CROSSING
 - ESC09 - CONSTRUCTION SOIL STABILIZATION
 - ESC10 - STABILIZED CONSTRUCTION ENTRANCE

GENERAL NOTES:

1. A SEWER CONSTRUCTION PERMIT SHALL BE OBTAINED AND A FEE PAID FOR CONSTRUCTION INSPECTION AND RECORD PLANS TO THE DEPARTMENT OF PUBLIC WORKS AT THE PERMITS CENTER 800 SOUTH FREDERICK AVENUE, 8TH FLOOR, ALHAMBRA, AT LEAST 72 HOURS PRIOR TO STARTING WORK UNDER THIS CONTRACT. COPIES OF ALL OTHER REQUIRED PERMITS, SUCH AS ROAD OCCUPATION, CALTRANS, ETC. MUST BE FILED WITH THE PERMIT APPLICATION.
2. PRIOR TO ISSUANCE OF ANY PERMIT, THE CONTRACTOR SHALL FILE A PERMIT FOR INSPECTIONS AND TRENCHES FROM THE STATE OF CALIFORNIA DIVISION OF INDUSTRIAL SAFETY, AND A CERTIFICATE OF LIABILITY INSURANCE WITH THE DEPARTMENT OF PUBLIC WORKS. THESE PERMITS MUST BE OBTAINED 30 DAYS PRIOR TO CANCELLATION OF POLICY.
3. IF WORK IS TO BE DONE IN A STATE HIGHWAY PERMIT MUST BE OBTAINED FROM THE STATE OF CALIFORNIA DIVISION OF HIGHWAYS, 150 SOUTH SPRING STREET, LOS ANGELES, CALIFORNIA.
4. WHEN WORK IS WITHIN A CONTRACT CITY, THE CONTRACTOR MUST CONTACT THE DIRECTOR OF PUBLIC WORKS OF THAT CITY TO DETERMINE THE LOCATION TO SET THE INSPECTION PEG.
5. THE CONTRACTOR SHALL CONTACT THE DISTRICT OFFICE LISTED ON THE APPLICATION FOR CONSTRUCTION PERMIT TO ARRANGE FOR AN ACCEPTABLE CONSTRUCTION START DATE, AND SHALL NOTIFY THE CONSTRUCTION DIVISION BY TELEPHONE (818) 495-1111 AT LEAST TWENTY-FOUR HOURS BEFORE STARTING ANY WORK UNDER THIS CONTRACT.
6. APPROVAL OF THIS PLAN BY THE COUNTY OF LOS ANGELES DOES NOT CONSTITUTE A REPRESENTATION AS TO ACCURACY OF THE LOCATION OF THE EXISTENCE OR NON-EXISTENCE OF ANY UNDERGROUND UTILITY PIPE OR STRUCTURE WITHIN THE LIMITS OF THIS PROJECT. THIS NOTE APPLIES TO ALL PAGES.
7. ALL WORK SHALL BE IN ACCORDANCE WITH THE "STANDARD SPECIFICATIONS FOR PUBLIC WORKS CONSTRUCTION, 1988 EDITION" INCLUDING SUPPLEMENTS AND THE SPECIAL PROVISIONS FOR THE CONSTRUCTION OF SANITARY SEWERS, DATED JULY 31, 1988, AND SHALL BE PROCEEDED ONLY IN THE PRESENCE OF THE DEPARTMENT OF PUBLIC WORKS PERSONNEL.
8. THE CONTRACTORS ATTENTION IS DIRECTED TO SECTION 118.1 OF THE STANDARD SPECIFICATIONS FOR PUBLIC WORKS CONSTRUCTION IN REGARD TO SAFETY ORDERS AND SHALL CONFORM TO THE "MINIMUM PUBLIC SAFETY REQUIREMENTS" AS SHOWN ON LOS ANGELES DEPARTMENT OF PUBLIC WORKS STANDARD S-2.
9. ELEVATIONS ARE IN FEET ABOVE U.S.C. & G.S. SEA LEVEL DATUM OF 1985.
10. NO REVISIONS SHALL BE MADE IN THESE PLANS WITHOUT THE APPROVAL OF THE DIRECTOR OF PUBLIC WORKS.
11. NO REPRESENTATIVE OF THE DEPARTMENT OF PUBLIC WORKS WILL SURVEY OR LAY OUT ANY PORTION OF THE WORK.
12. CHANGES TO THIS PROJECT WILL BE MADE BY THE CONTRACTOR AND APPROVED BY THE COUNTY OF LOS ANGELES DEPARTMENT OF PUBLIC WORKS. CENTERLINE OF STREETS OR CENTERLINE OF ALLEYS ARE SHOWN BY CIRCLES ON PROFILES AT ALL POINTS BETWEEN DESIGNATED POINTS. THE GRADE SHALL BE ESTABLISHED SO AS TO CONFORM TO A STRAIGHT LINE GRADE BETWEEN DESIGNATED POINTS.
13. THE PRIVATE ENGINEER SHALL FURNISH THE DEPARTMENT OF PUBLIC WORKS WITH GRADE SHEETS AND STATIONING FOR ALL HOUSE LATERALS AND "ON" OR "OFF" BRANCHES AND SHALL PROVIDE STAKES FOR THEM AT THEIR PROPER LOCATIONS WITH STATIONING PLAINLY MARKED. ALL HOUSE LATERALS SHALL BE CONSTRUCTED IN A STRAIGHT ALIGNMENT AT RIGHT ANGLES FROM THE MAIN LINE SEWER EXCEPT AS SHOWN ON THE PLANS. HOUSE LATERALS FROM CHIMNEYS SHALL NOT HAVE AN ANGLE OF LESS THAN 45° WITH THE MAIN SEWER. ANY CHANGE IN ALIGNMENT SHALL BE INDICATED BY THE PRIVATE ENGINEER.
14. THE PRIVATE ENGINEER SHALL FURNISH THE HOUSE LATERAL DEPTH AT THE PROPERTY LINE BELOW THE TOP CURB ELEVATION FOR EACH HOUSE LATERAL ON THE GRADE SHEET.

CONSTRUCTION NOTES:

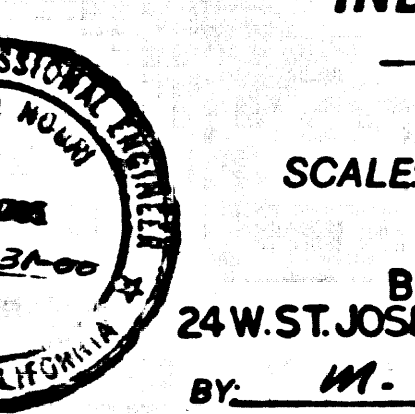
1. PROVIDE SURVEY STAKES ON THE PROPERTY LINE OR PROPERTY LINES PRODUCED AT RIGHT ANGLES TO THE SEWER LINE AT THE CENTERLINE OF MAINLINE.
2. WITHIN CLAY PIPE JOINTS SHALL BE TYPE "O" OR "P" PER STANDARD SPECIFICATIONS SECTION 308-2.
3. IF A POWER POLE IS WITHIN THREE FEET OF THE SEWER, THE SEWER SHALL BE ENCASED PER STANDARD PLAN S-2, CASE II, TWO FEET ON EACH SIDE FROM THE POINT OF INTERFERENCE.
4. ALL JOINTS BETWEEN CLAY PIPE AND WITHIN CLAY PIPE SHALL BE MADE WITH A RUBBER BLEVE JOINT, TYPE "D" (WITH BUSHING) NECESSARY PER STANDARD SPECIFICATIONS SECTION 308-2.
5. HOUSE LATERALS TO BE CONSTRUCTED WITH INVERTS AT THE PROPERTY LINE 2 FEET BELOW CURB GRADE EXCEPT AS NOTED.
6. WYE OR TEE BRANCHES MAY BE USED FOR CONNECTIONS TO MAINLINE SEWERS EXCEPT AS NOTED.
7. IF DURING THE COURSE OF CONSTRUCTION, IT IS DETERMINED THAT THERE IS LESS THAN FOUR FEET OF COVER OVER THE TOP OF A MAINLINE OR HOUSE LATERAL SEWER WHICH IS NOT INDICATED ON THE PLANS, THE PIPE SHALL BE ENCASED PER STANDARD PLAN S-2, CASE II, UNLESS OTHERWISE APPROVED BY THE DIRECTOR OF PUBLIC WORKS.
8. ALL STRUCTURES SHALL BE EITHER BRICK SEWER MANHOLES PER STANDARD PLAN S-2 OR PRECAST CONCRETE SEWER MANHOLES PER STANDARD PLAN S-2, OR PRECAST CONCRETE MANHOLE PER STANDARD PLAN S-4, EXCEPT AS NOTED.
9. RESURFACE ALL TRENCHES WITHIN PAVED AREAS TO MEET LOS ANGELES COUNTY PUBLIC WORKS OR CALIFORNIA STATE HIGHWAY REQUIREMENTS IN ACCORDANCE WITH THE PERMITS.
10. REEL DOWN LAMPED WITH SECTION 118.1 OF THE STANDARD SPECIFICATIONS WILL BE PROVIDED FOR BACKLASH AT STREET CLOSURES. CERTIFICATION OF BACKLASH COMPACTNESS AND SAID EQUIVALENTS BY A QUALIFIED CIVIL ENGINEER SHALL BE PROVIDED BY THE PERMITTEE PRIOR TO THE RESURFACE OF A CERTAIN AREA.
11. ALL BACKFILL AND FILLS OUTSIDE OF STREET RIGHT OF WAY SHALL BE COMPACTED TO 90% OF MAXIMUM DENSITY AS DETERMINED BY ASTM D1557 METHOD "D" UNLESS OTHERWISE SPECIFIED. THIS SHALL BE CERTIFIED BY A QUALIFIED CIVIL ENGINEER. THIS CERTIFICATION SHALL BE SUBMITTED TO THE CONSTRUCTION DIVISION OF THE DEPARTMENT OF PUBLIC WORKS PRIOR TO THE START OF THE WORK BY THE COUNTY.
12. MANHOLE TOPS IN UNIMPROVED RIGHTS OF WAY TO BE 60 INCHES ABOVE FINISHED GRADE.
13. SEWERS TO BE TESTED FOR LEAKAGE PER SECTION 308-1.4 OF THE STANDARD SPECIFICATIONS AND SPECIAL PROVISIONS.

PROFILE ALIGNMENT AND GRADE OF **PAGE 1**

SANITARY SEWERS:
 TO BE CONSTRUCTED IN **55315**
TRACT NO. 35425

PRIVATE CONTRACT NO. 11190
INDEX 1191
2 SHEETS, 4 PAGES

SCALE: VERT. 1" = 8' **MARCH 28, 2000**
 PREPARED IN THE OFFICES OF
B & E ENGINEERS
 24 W. ST. JOSEPH ST. ARCADIA CA. 91007
 BY: **M. J. JAMES** TEL. NO. (626) 446-4449
 REG. C.E. NO. **42705**

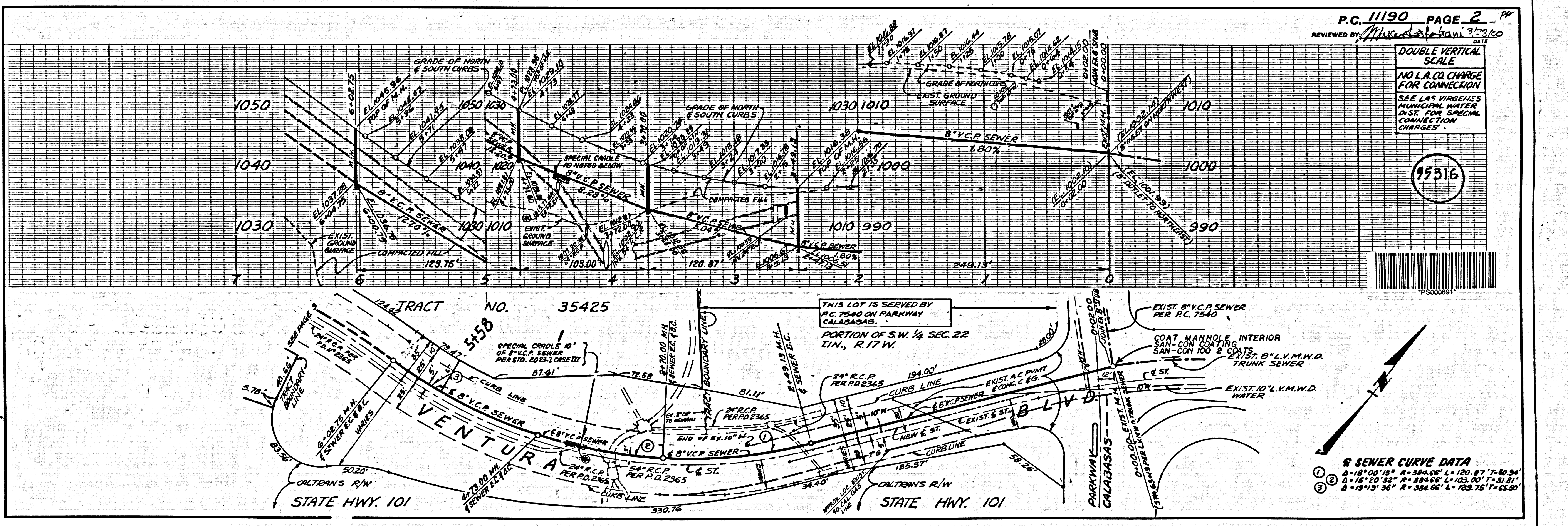


THE FOLLOWING LATEST REVISED STANDARD PLANS ON FILE IN THE OFFICE OF THE DEPARTMENT OF PUBLIC WORKS SHALL APPLY IN THE CONSTRUCTION OF THIS PROJECT:

LEADPIPE	8000-0
MINIMUM PUBLIC SAFETY REQUIREMENTS	8008-0
HOUSE CONNECTION SEWER	8009-0
BRICKLINE WITH CURBLINE MANHOLES	8010-0
STANDARD MANHOLE SET	8011-0
BRICKLINE FOR SEWER PIPE	8012-0
CHANGING AND PREPARATION	8013-0
WYE OR TEE SUPPORT	8014-0
ALLOWABLE TRENCH WIDTH	8015-0
LOCKING MANHOLE FRAME AND COVER	8016-0
NON-REINFORCED PRECAST CONCRETE MANHOLE	8017-0
SHOULDER FROM HOUSE LATERALS	8018-1

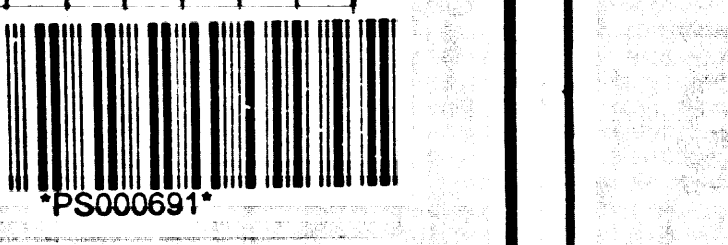
COUNTY OF LOS ANGELES, CALIFORNIA

HARRY M. STONE
 DIRECTOR OF PUBLIC WORKS
 APPROVED: **Ronald J. ...** **APPROVED: ...**
 CHECKED: **...** **...**
 REG. C.E. NO. **45621** **...**
CALABASAS BLDG. DIST. **31**



P.C. 11190 PAGE 2
 REVIEWED BY: **...** DATE: **3/22/00**

DOUBLE VERTICAL SCALE
NO L.A. CO. CHARGE FOR CONNECTION
 SEE L.A.S. VIRGENES' STANDARD WATER DIST. FOR SPECIAL CHARGES.
55316



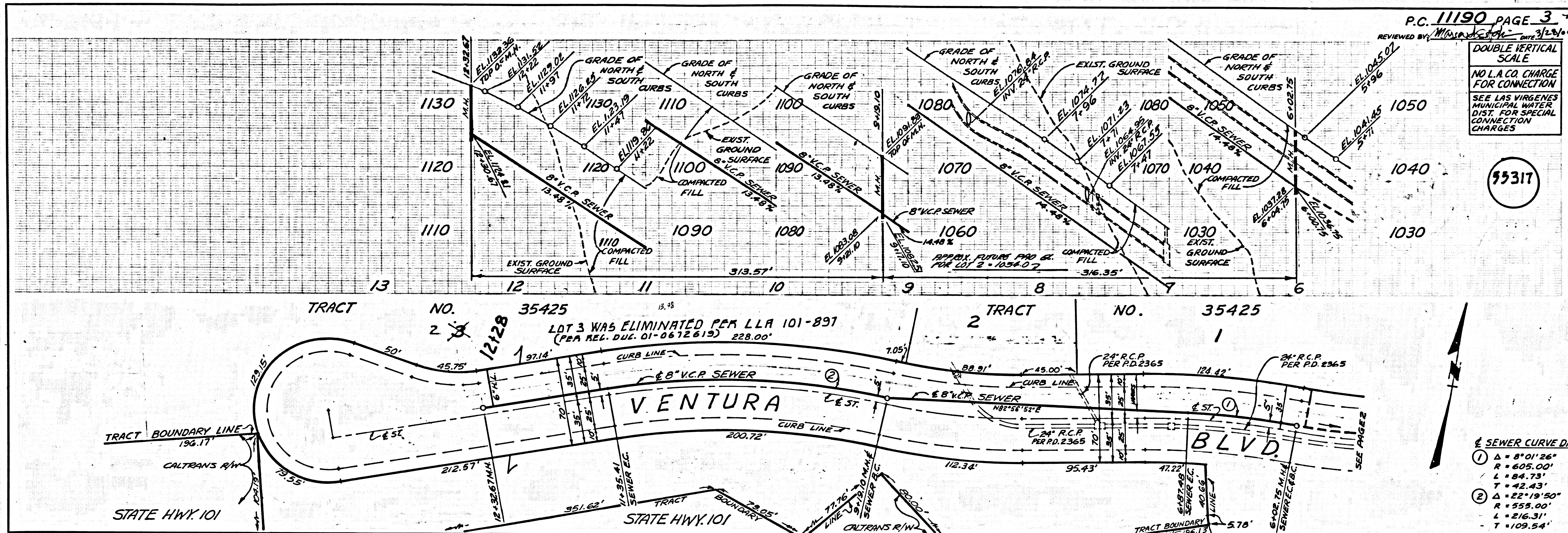
SEWER CURVE DATA
 1. $R=103.00'$ $\Delta=150.00'$ $L=103.00'$ $T=51.81'$
 2. $R=15.20'$ $\Delta=88.46'$ $L=103.00'$ $T=51.81'$
 3. $R=19.13'$ $\Delta=384.66'$ $L=123.75'$ $T=65.80'$

1

BC 11190

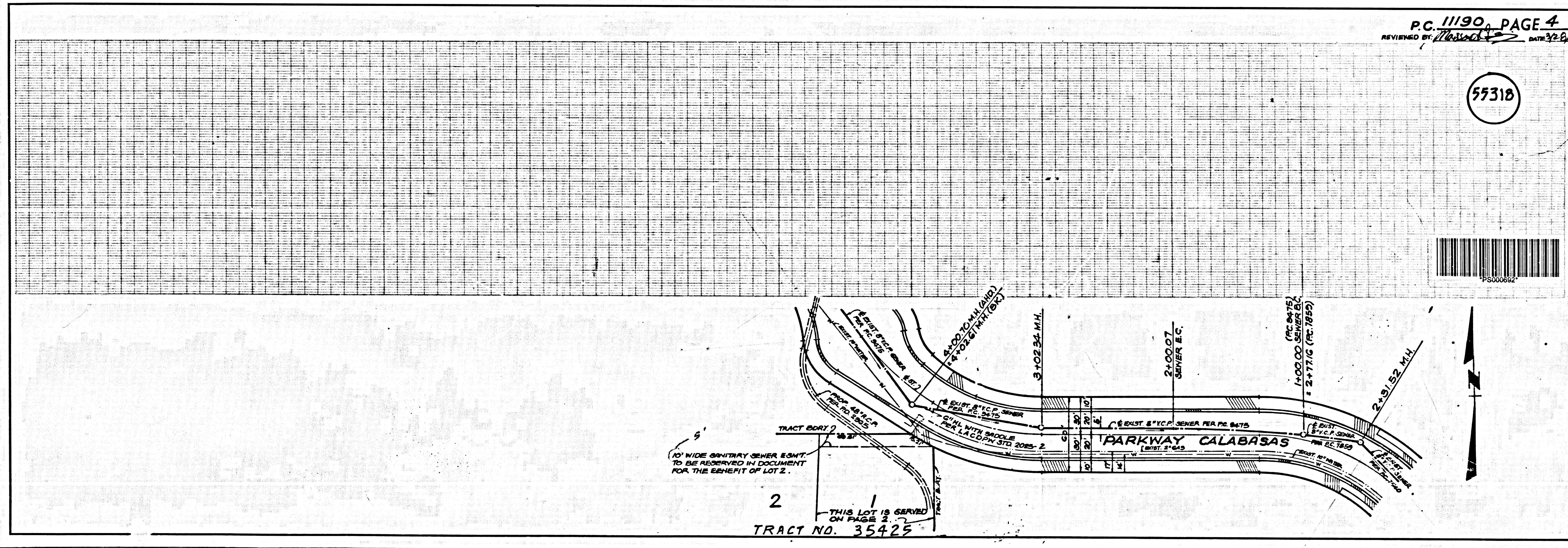
SPACE ON TRACT

SCALE



P.C. 11190 PAGE 3
 REVIEWED BY: [Signature] DATE: 3/15/00
 DOUBLE VERTICAL SCALE
 NO L.A.C. CHARGE FOR CONNECTION
 SEE LAS VEGAS MUNICIPAL DIST. FOR SPECIAL CONNECTION CHARGES

SEWER CURVE DATA
 ① Δ = 8°01'26"
 R = 605.00'
 L = 94.73'
 T = 42.43'
 ② Δ = 22°18'50"
 R = 555.00'
 L = 216.31'
 T = 109.54'



P.C. 11190 PAGE 4
 REVIEWED BY: [Signature] DATE: 3/22/00
 55318

5

PC 11190

SPACE ON TRACT