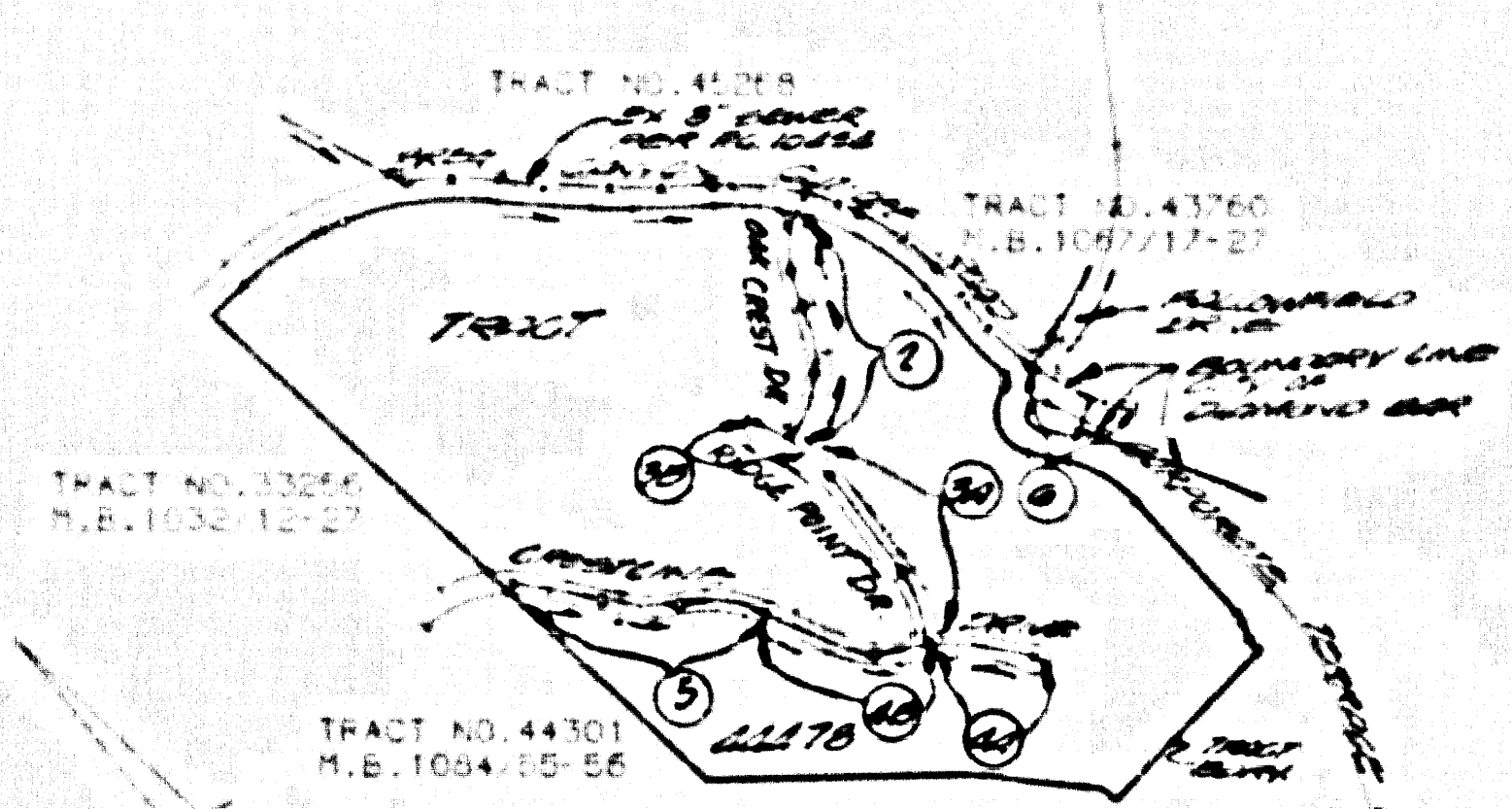


S.M. 100' 48" ELEV. 100' 42" QUAD. 19\_20

DOUBLE SCALE



INDEX MAP  
TR. NO. 4478  
SCALE: 1"=400'  
TENTATIVE PARCEL MAP NO. 19997

| REV. NO. | DATE     | REVISIONS   |
|----------|----------|---|
| 1        | 10/17/40 | REVISED SURFACE PROFILE FROM STA 0+00 TO STA 3+00.38 ON PAGE 2A |

APPROVED: *Samuel G. Hobbs*  
DEPT. OF PUBLIC WORKS

CONTRACTOR SHALL MAINTAIN FLOW OF ALL TRACED CURVING RECONSTRUCTION OF M.C. EXHIBIT ON PAGE 2

NO CONNECTION FOR THE DISPOSAL OF INDUSTRIAL WASTES SHALL BE MADE TO SEWERS SHOWN ON THESE DRAWINGS UNTIL A PERMIT FOR INDUSTRIAL WASTEWATER DISCHARGE HAS BEEN ISSUED BY THE SANITATION DISTRICTS FOR SAID CONNECTION.

BEFORE BREAKING INTO OR CONSTRUCTION ON A COUNTY SANITATION DISTRICT SEWER AND PRIOR TO FINAL ACCEPTANCE OF THE PROJECT, SANITATION DISTRICT INSPECTOR SHALL BE NOTIFIED BY PHONE (818) 962-8605 SO THAT REQUIRED INSPECTION CAN BE MADE.

LOBS 74 TO 79 ARE OPEN SPACED LOTS AND ARE RECOMMENDED TO NO CONSTRUCTION. THEY WILL NOT BE SERVED BY THIS SEWER.

NOTES: APPROVED IN CALIFORNIA REGISTERED PROFESSIONAL ENGINEER

GENERAL NOTES:

1. ALL SEWER CONSTRUCTION SHALL BE IN ACCORDANCE WITH THE STANDARD SPECIFICATIONS FOR PUBLIC WORKS CONSTRUCTION, 1938 EDITION, AS AMENDED BY THE BOARD OF SUPERVISORS OF THE COUNTY OF LOS ANGELES, CALIFORNIA, AND THE STANDARD SPECIFICATIONS FOR PUBLIC WORKS CONSTRUCTION, 1938 EDITION, AS AMENDED BY THE BOARD OF SUPERVISORS OF THE COUNTY OF LOS ANGELES, CALIFORNIA, AND THE STANDARD SPECIFICATIONS FOR PUBLIC WORKS CONSTRUCTION, 1938 EDITION, AS AMENDED BY THE BOARD OF SUPERVISORS OF THE COUNTY OF LOS ANGELES, CALIFORNIA, AND THE STANDARD SPECIFICATIONS FOR PUBLIC WORKS CONSTRUCTION, 1938 EDITION, AS AMENDED BY THE BOARD OF SUPERVISORS OF THE COUNTY OF LOS ANGELES, CALIFORNIA.
2. PRIOR TO ISSUANCE OF ANY PERMIT, THE CONTRACTOR SHALL FILE A PERMIT FOR EXCAVATION AND TRACING FROM THE STATE OF CALIFORNIA DEPARTMENT OF PUBLIC WORKS AND SHALL OBTAIN THE NECESSARY PERMITS FROM THE COUNTY OF LOS ANGELES DEPARTMENT OF PUBLIC WORKS AND THE CITY OF LOS ANGELES DEPARTMENT OF PUBLIC WORKS.
3. APPROVAL OF THIS PLAN BY THE COUNTY OF LOS ANGELES DOES NOT CONSTITUTE A REPRESENTATION AS TO ACCURACY OF THE LOCATION OF THE SEWER OR AS TO THE DEPTH OF ANY UNDERGROUND UTILITIES OR STRUCTURES WITHIN THE LIMITS OF THIS PROJECT. THE CONTRACTOR SHALL VERIFY THE LOCATION AND DEPTH OF ALL UTILITIES AND STRUCTURES PRIOR TO CONSTRUCTION.
4. APPROVAL OF THIS PLAN BY THE COUNTY OF LOS ANGELES DOES NOT CONSTITUTE A REPRESENTATION AS TO ACCURACY OF THE LOCATION OF THE SEWER OR AS TO THE DEPTH OF ANY UNDERGROUND UTILITIES OR STRUCTURES WITHIN THE LIMITS OF THIS PROJECT. THE CONTRACTOR SHALL VERIFY THE LOCATION AND DEPTH OF ALL UTILITIES AND STRUCTURES PRIOR TO CONSTRUCTION.
5. APPROVAL OF THIS PLAN BY THE COUNTY OF LOS ANGELES DOES NOT CONSTITUTE A REPRESENTATION AS TO ACCURACY OF THE LOCATION OF THE SEWER OR AS TO THE DEPTH OF ANY UNDERGROUND UTILITIES OR STRUCTURES WITHIN THE LIMITS OF THIS PROJECT. THE CONTRACTOR SHALL VERIFY THE LOCATION AND DEPTH OF ALL UTILITIES AND STRUCTURES PRIOR TO CONSTRUCTION.
6. APPROVAL OF THIS PLAN BY THE COUNTY OF LOS ANGELES DOES NOT CONSTITUTE A REPRESENTATION AS TO ACCURACY OF THE LOCATION OF THE SEWER OR AS TO THE DEPTH OF ANY UNDERGROUND UTILITIES OR STRUCTURES WITHIN THE LIMITS OF THIS PROJECT. THE CONTRACTOR SHALL VERIFY THE LOCATION AND DEPTH OF ALL UTILITIES AND STRUCTURES PRIOR TO CONSTRUCTION.
7. APPROVAL OF THIS PLAN BY THE COUNTY OF LOS ANGELES DOES NOT CONSTITUTE A REPRESENTATION AS TO ACCURACY OF THE LOCATION OF THE SEWER OR AS TO THE DEPTH OF ANY UNDERGROUND UTILITIES OR STRUCTURES WITHIN THE LIMITS OF THIS PROJECT. THE CONTRACTOR SHALL VERIFY THE LOCATION AND DEPTH OF ALL UTILITIES AND STRUCTURES PRIOR TO CONSTRUCTION.
8. APPROVAL OF THIS PLAN BY THE COUNTY OF LOS ANGELES DOES NOT CONSTITUTE A REPRESENTATION AS TO ACCURACY OF THE LOCATION OF THE SEWER OR AS TO THE DEPTH OF ANY UNDERGROUND UTILITIES OR STRUCTURES WITHIN THE LIMITS OF THIS PROJECT. THE CONTRACTOR SHALL VERIFY THE LOCATION AND DEPTH OF ALL UTILITIES AND STRUCTURES PRIOR TO CONSTRUCTION.
9. APPROVAL OF THIS PLAN BY THE COUNTY OF LOS ANGELES DOES NOT CONSTITUTE A REPRESENTATION AS TO ACCURACY OF THE LOCATION OF THE SEWER OR AS TO THE DEPTH OF ANY UNDERGROUND UTILITIES OR STRUCTURES WITHIN THE LIMITS OF THIS PROJECT. THE CONTRACTOR SHALL VERIFY THE LOCATION AND DEPTH OF ALL UTILITIES AND STRUCTURES PRIOR TO CONSTRUCTION.
10. APPROVAL OF THIS PLAN BY THE COUNTY OF LOS ANGELES DOES NOT CONSTITUTE A REPRESENTATION AS TO ACCURACY OF THE LOCATION OF THE SEWER OR AS TO THE DEPTH OF ANY UNDERGROUND UTILITIES OR STRUCTURES WITHIN THE LIMITS OF THIS PROJECT. THE CONTRACTOR SHALL VERIFY THE LOCATION AND DEPTH OF ALL UTILITIES AND STRUCTURES PRIOR TO CONSTRUCTION.
11. APPROVAL OF THIS PLAN BY THE COUNTY OF LOS ANGELES DOES NOT CONSTITUTE A REPRESENTATION AS TO ACCURACY OF THE LOCATION OF THE SEWER OR AS TO THE DEPTH OF ANY UNDERGROUND UTILITIES OR STRUCTURES WITHIN THE LIMITS OF THIS PROJECT. THE CONTRACTOR SHALL VERIFY THE LOCATION AND DEPTH OF ALL UTILITIES AND STRUCTURES PRIOR TO CONSTRUCTION.
12. APPROVAL OF THIS PLAN BY THE COUNTY OF LOS ANGELES DOES NOT CONSTITUTE A REPRESENTATION AS TO ACCURACY OF THE LOCATION OF THE SEWER OR AS TO THE DEPTH OF ANY UNDERGROUND UTILITIES OR STRUCTURES WITHIN THE LIMITS OF THIS PROJECT. THE CONTRACTOR SHALL VERIFY THE LOCATION AND DEPTH OF ALL UTILITIES AND STRUCTURES PRIOR TO CONSTRUCTION.

CONSTRUCTION NOTES:

1. EXPOSED SURFACE STAYS ON THE PROPERTY LINE OR PROPERTY LINES PRODUCED AT RIGHT ANGLES TO THE SEWER LINE AT THE CENTER OF EACH MANHOLE.
2. EXPOSED CLAY PIPE JOINTS SHALL BE FIVE (5) OR 10' PER STANDARD SPECIFICATIONS SECTION 202.
3. A POWER POLE IS LOCATED THREE FEET OF THE SEWER. THE SEWER SHALL BE ENCASED PER STANDARD PLAN 514 CASE 1 TWO FEET ON EACH SIDE ABOVE THE POINT OF INTERFERENCE.
4. ALL JOINTS BETWEEN CAST-IRON PIPE AND STRENGTHENED CLAY PIPE SHALL BE MADE WITH RUBBER GLEVES ON THE JOINTS. IF NECESSARY PER STANDARD SPECIFICATIONS SECTION 202.
5. MANHOLES SHALL BE CONSTRUCTED TO THE DEPTH OF THE PROPERTY LINE 18" BELOW CURB GRADE EXCEPT AS NOTED.
6. PIPE OR THE MANHOLES MAY BE USED FOR CONNECTIONS TO SEWER LINES EXCEPT AS NOTED.
7. IF DURING THE COURSE OF CONSTRUCTION IT IS DETERMINED THAT THERE IS LESS THAN FOUR FEET OF COVER OVER THE TOP OF A MANHOLE OR OVER A LATERAL V.C. SEWER WHICH IS NOT LOCATED ON THE PLAN, THE PIPE SHALL BE ENCASED PER STANDARD PLAN 514 CASE 1 UNLESS OTHERWISE APPROVED BY THE CHIEF ENGINEER OF PUBLIC WORKS.
8. ALL STRUCTURES SHALL BE CONSTRUCTED TO THE DEPTH OF THE PROPERTY LINE 18" BELOW CURB GRADE EXCEPT AS NOTED.
9. REUSE ALL FRANCHISES WITHIN AVEID AREAS TO SERVE LOS ANGELES COUNTY PUBLIC WORKS OR CALIFORNIA STATE HIGHWAY REQUIREMENTS IN ACCORDANCE WITH THE PERMITS.
10. THE CONTRACTOR SHALL BE RESPONSIBLE FOR THE PROTECTION OF ALL UTILITIES AND STRUCTURES WHICH ARE NOT TO BE REMOVED OR CHANGED BY THIS PROJECT. THE CONTRACTOR SHALL BE RESPONSIBLE FOR THE PROTECTION OF ALL UTILITIES AND STRUCTURES WHICH ARE NOT TO BE REMOVED OR CHANGED BY THIS PROJECT.
11. ALL STRUCTURES AND PIPES OUTSIDE OF STREET RIGHT-OF-WAY SHALL BE CONNECTED TO THE SEWER BY THE DEPTH AS DETERMINED BY THE STANDARD SPECIFICATIONS FOR PUBLIC WORKS CONSTRUCTION, 1938 EDITION, AS AMENDED BY THE BOARD OF SUPERVISORS OF THE COUNTY OF LOS ANGELES, CALIFORNIA, AND THE STANDARD SPECIFICATIONS FOR PUBLIC WORKS CONSTRUCTION, 1938 EDITION, AS AMENDED BY THE BOARD OF SUPERVISORS OF THE COUNTY OF LOS ANGELES, CALIFORNIA.
12. SEWERS TO BE 18" FOR LARGER PIPE SECTION 202-1 OF THE STANDARD SPECIFICATIONS AND SPECIAL PROVISIONS.

PROFILE, ALIGNMENT AND GRADE OF  
SANITARY SEWERS

TO BE CONSTRUCTED IN

TRACT NO. 4478

PRIVATE CONTRACT NO. 11202

INDEX 2242  
3 SHEETS, 0 PAGES

SCALE: 1"=40' 1926 53858

PREPARED IN THE OFFICES OF  
THOMAS A. TIDEMANSON  
DIRECTOR OF PUBLIC WORKS  
BY: *Samuel G. Hobbs*  
REG. CE NO. 41102 7/14/40

THE FOLLOWING LATEST REVISED STANDARD PLANS ON FILE IN THE OFFICE OF THE DEPARTMENT OF PUBLIC WORKS SHALL APPLY TO THE CONSTRUCTION OF THIS PROJECT:

| STANDARD PLAN NO. | DESCRIPTION                         |
|-------------------|-------------------------------------|
| 514               | MINIMUM PUBLIC SAFETY REQUIREMENTS  |
| 515               | SEWER MANHOLES                      |
| 516               | REINFORCED PRECAST CONCRETE MANHOLE |
| 517               | STANDARD MANHOLE 2' DEEP            |
| 518               | REINFORCED PRECAST CONCRETE MANHOLE |
| 519               | ALLOWABLE TRENCH WIDTHS             |
| 520               | PIPE ON THE MANHOLE                 |
| 521               | ALLOWABLE TRENCH WIDTHS             |
| 522               | ALLOWABLE TRENCH WIDTHS             |
| 523               | ALLOWABLE TRENCH WIDTHS             |
| 524               | ALLOWABLE TRENCH WIDTHS             |
| 525               | ALLOWABLE TRENCH WIDTHS             |
| 526               | ALLOWABLE TRENCH WIDTHS             |
| 527               | ALLOWABLE TRENCH WIDTHS             |
| 528               | ALLOWABLE TRENCH WIDTHS             |
| 529               | ALLOWABLE TRENCH WIDTHS             |
| 530               | ALLOWABLE TRENCH WIDTHS             |
| 531               | ALLOWABLE TRENCH WIDTHS             |
| 532               | ALLOWABLE TRENCH WIDTHS             |
| 533               | ALLOWABLE TRENCH WIDTHS             |
| 534               | ALLOWABLE TRENCH WIDTHS             |
| 535               | ALLOWABLE TRENCH WIDTHS             |
| 536               | ALLOWABLE TRENCH WIDTHS             |
| 537               | ALLOWABLE TRENCH WIDTHS             |
| 538               | ALLOWABLE TRENCH WIDTHS             |
| 539               | ALLOWABLE TRENCH WIDTHS             |
| 540               | ALLOWABLE TRENCH WIDTHS             |
| 541               | ALLOWABLE TRENCH WIDTHS             |
| 542               | ALLOWABLE TRENCH WIDTHS             |
| 543               | ALLOWABLE TRENCH WIDTHS             |
| 544               | ALLOWABLE TRENCH WIDTHS             |
| 545               | ALLOWABLE TRENCH WIDTHS             |
| 546               | ALLOWABLE TRENCH WIDTHS             |
| 547               | ALLOWABLE TRENCH WIDTHS             |
| 548               | ALLOWABLE TRENCH WIDTHS             |
| 549               | ALLOWABLE TRENCH WIDTHS             |
| 550               | ALLOWABLE TRENCH WIDTHS             |

COUNTY OF LOS ANGELES, CALIFORNIA

THOMAS A. TIDEMANSON  
DIRECTOR OF PUBLIC WORKS

APPROVED: *Samuel G. Hobbs* 8/10/40  
DATE

CHECKED: *Thomas A. Tidemanson* 8/10/40  
DATE

REG. CE NO. 41102 7/14/40

CHARLES W. CARRY  
CHIEF ENGINEER

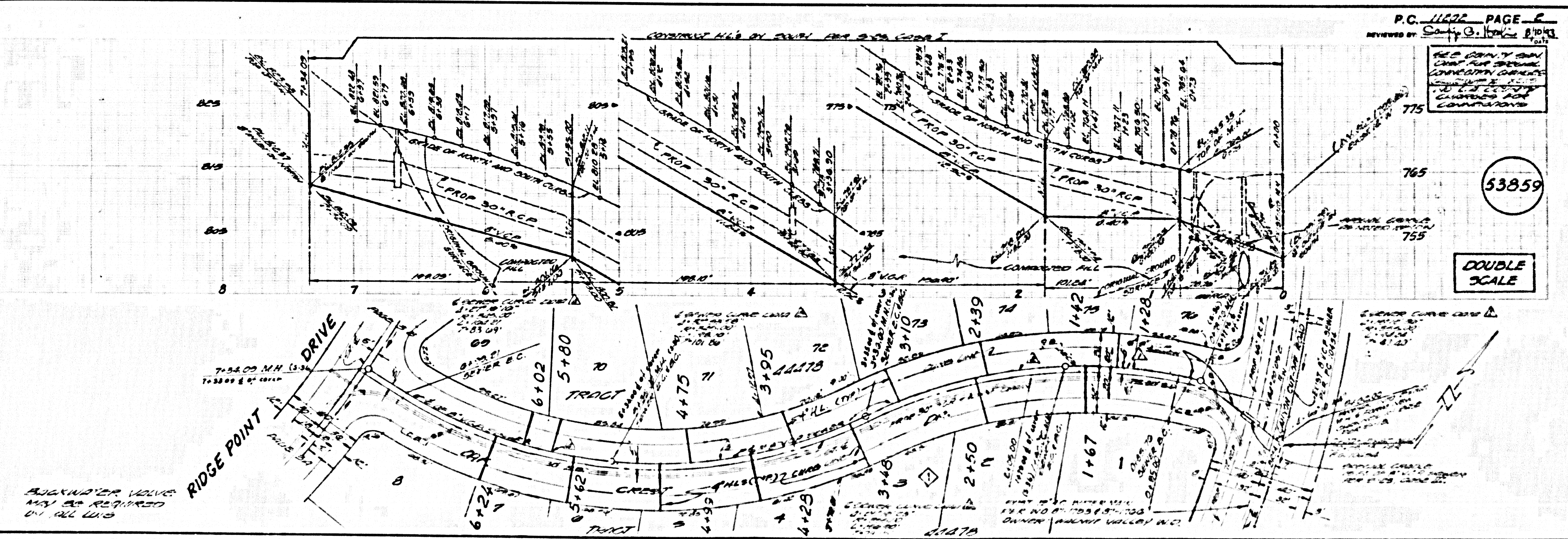
APPROVED: *Charles W. Carry* 8/10/40  
DATE

CHECKED: *Charles W. Carry* 8/10/40  
DATE

REG. CE NO. 41102 7/14/40

FOR ACCEPTING THE SEWER IN THE CITY OF DIAMOND BAR CONNECTING TO EXIST. M.C. CITY OF DIAMOND BAR

APPROVED: *Charles W. Carry* 7/14/40  
DATE



P.C. 11622 PAGE 2  
REVISED BY: *Samuel G. Hobbs* 8/10/40

REVISIONS:  
1. SEE CITY OF DIAMOND BAR CONSTRUCTION CONTRACT FOR ALL CONDITIONS AND SPECIFICATIONS TO BE OBSERVED IN CONSTRUCTION.

53859

DOUBLE SCALE

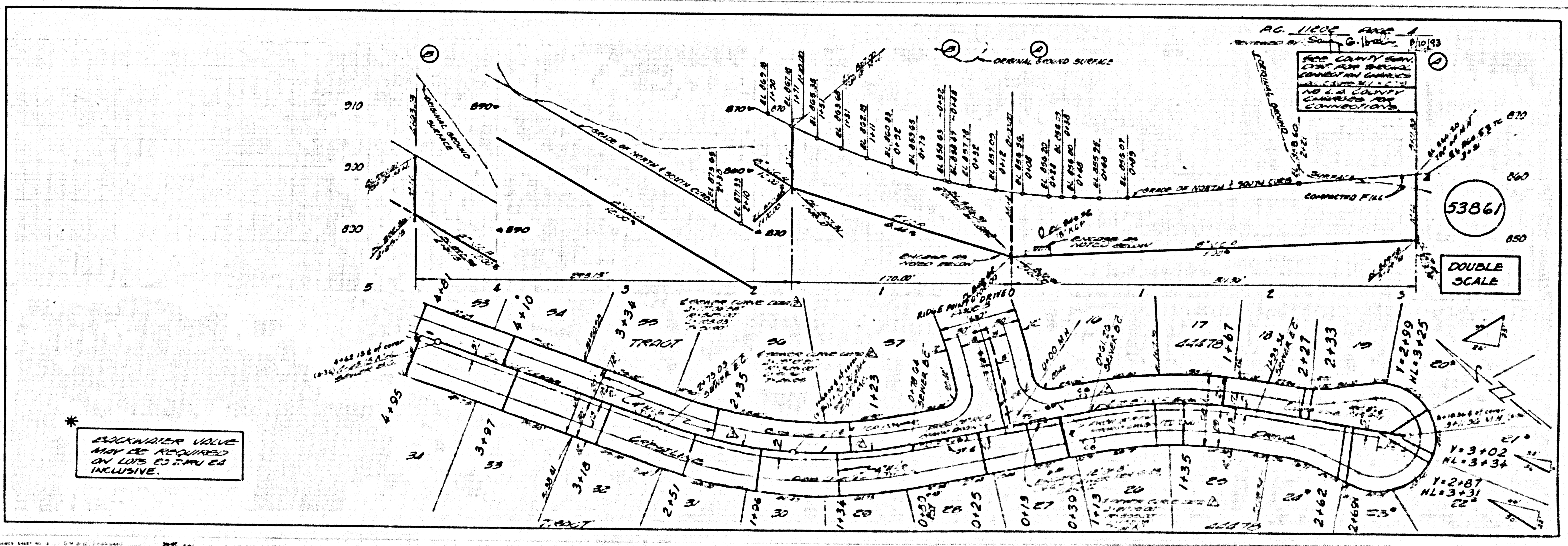
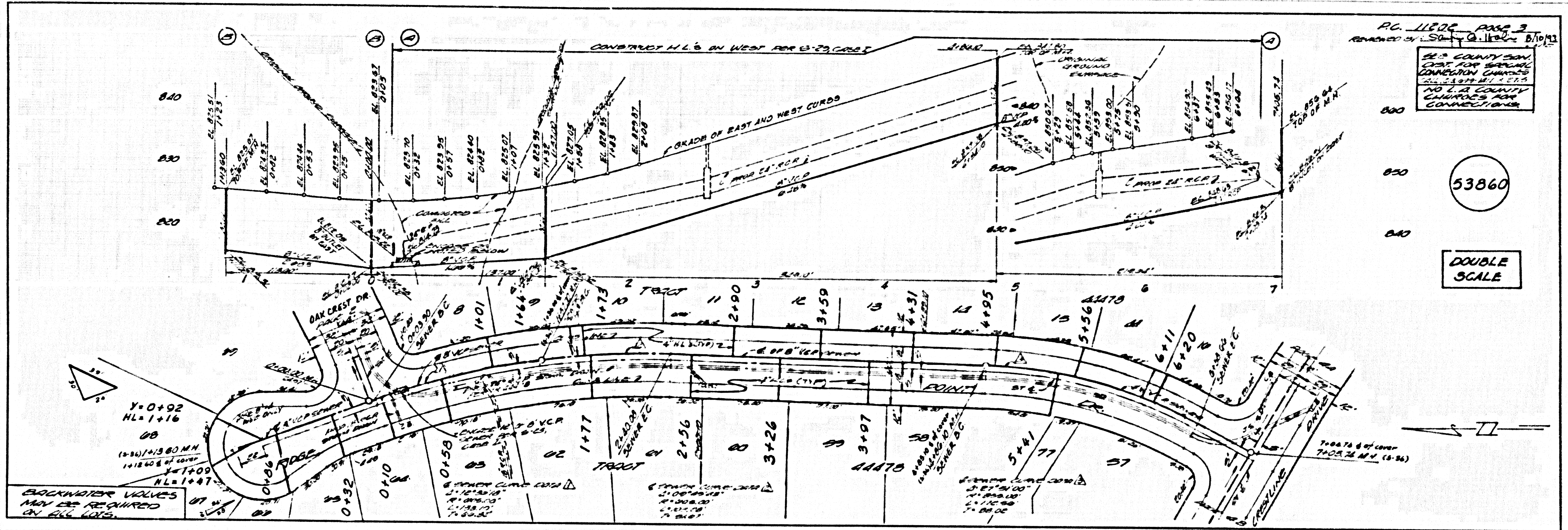
REVISIONS: MAY BE REQUIRED ON ALL LOTS

1

BC 11505

STAYS ON TRACT



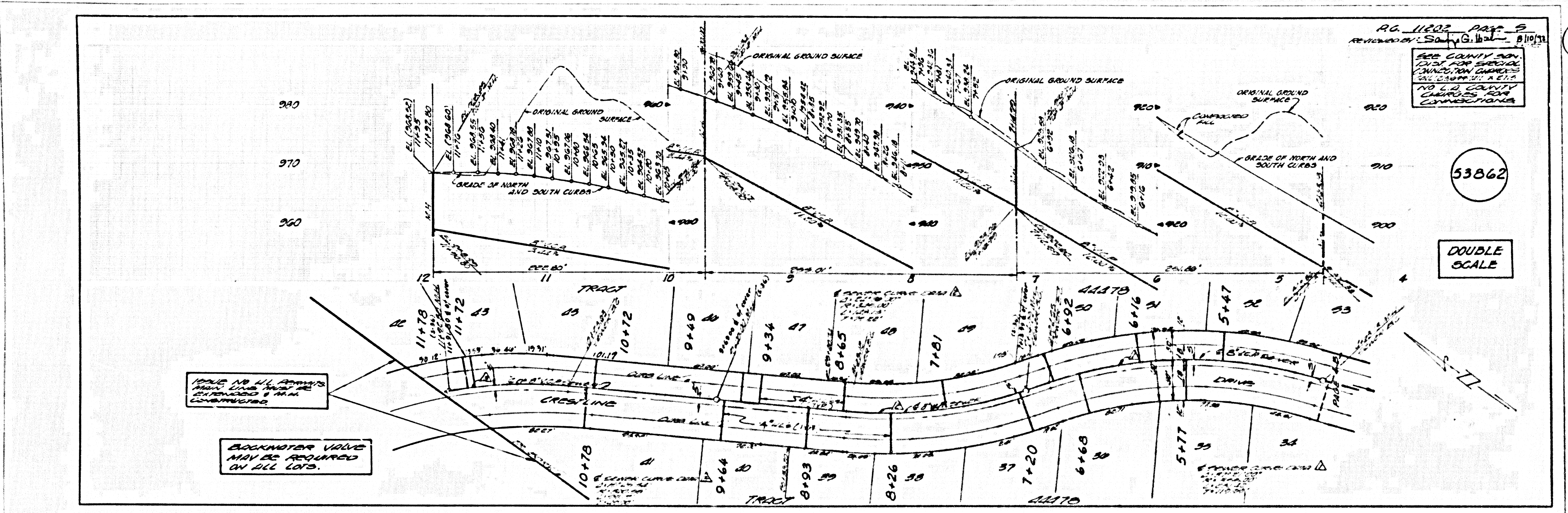


2

53860

53861





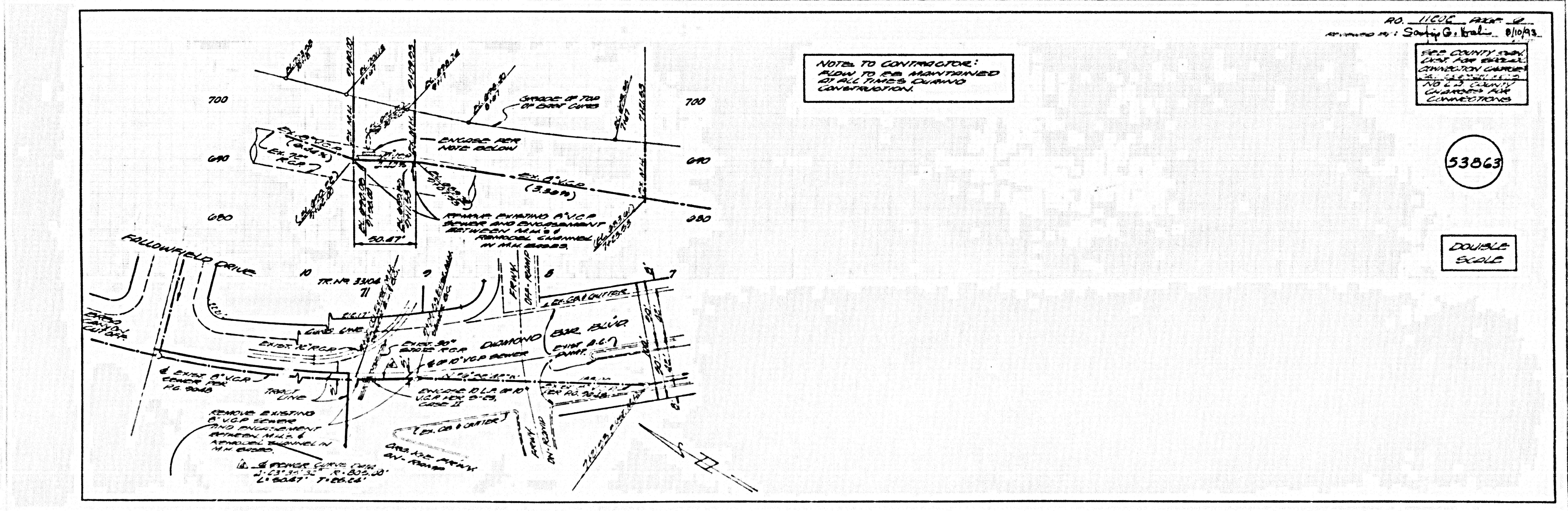
NO LAD COUNTY CHANGES FOR CONNECTIONS

LOCKING VALVE MAY BE REQUIRED ON ALL LOTS.

5

SDS11 09

STAIN ON TISSUE



NOTES TO CONTRACTOR:  
 ALLOW TO BE MAINTAINED AT ALL TIMES DURING CONSTRUCTION.

LAD COUNTY PLAN FOR SPECIAL CONNECTION CHANGES TO LOTS 1-42  
 NO LAD COUNTY CHANGES FOR CONNECTIONS

53863

DOUBLE SCALE